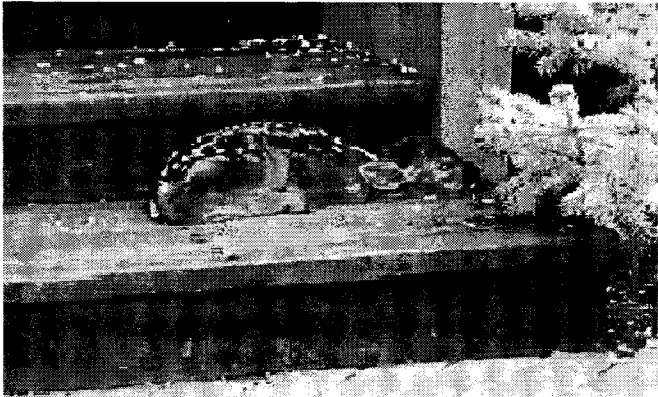


Yellowstone News

Volume 1, Issue 3

July 2004



Find the Fawn! Nature sure can protect its babies.

Farewell to Friends

Thanks for all the great memories and support from the staff at Yellowstone! It is a perfect cap to a great career in the Park Service. My party was fantastic and the wonderful gifts will be well used. I had really coveted the Moose dishes. John and I will settle in Jackson and are listed in the phone book. Let us hear from you.

Edna Good

Check us out at: www.nps.gov/yell/newsletter.pdf

INSIDE THIS ISSUE

- 1 Farewell from Edna & Fly Fishing With Buffalo
- 2 Yellowstone Association Position & Classes
- 3 Classifieds, Life Insurance Open Season
- 4 Did You Know? & Welcome to Yellowstone
- 5 VIP's, Music Festival & YFEA Field Trip
- 6 A Word from Employees & Alumni Assoc. of the NPS
- 7 Road Construction Schedule

Who Says You Can't Fly Fish in a Buffalo Herd?

Dear Angler,

The Yellowstone National Park Fly-fishing Volunteer Program is up and running for its third year. My name is Bill Voigt and I am coordinating the activities this summer while Tim Bywater is on leave. You can reach me by phone at (307) 242-7547, by voice mail at the Fisheries office at Lake at (307)242-2441 or by email at wfv100@psu.edu. This summer promises to be another exciting season with projects throughout the Park. The Grayling tagging and monitoring on the Gibbon River are well under way. Other projects will involve fishing streams on the west side of the Park, such as Grayling Creek and Specimen Creek. Participating in several studies on small lakes may also be among our objectives.

For those of you who haven't participated before, consider volunteering some fishing time with the Program. The Yellowstone Fly-fishing Volunteer Program provides anglers with opportunities to contribute valuable information to the Yellowstone CR Aquatics database, while enjoying one of America's unique ecosystems.

I look forward to fishing with you, Bill Voigt



Yellowstone Association Seeks Interpretive Wildlife Biologist

Summary Description:

The Yellowstone Association Institute seeks an Interpretive Wildlife Biologist to teach a variety of programs on the ecology, history, conservation, and management of Yellowstone wildlife. The immediate opening is for part-time employment in August and full-time employment in September. Additional employment is available throughout the year, including full winter and summer seasons.

The Interpretive Wildlife Biologist will lead day trips and teach short courses focused on wildlife ecology. The day trips are road-based and relatively informal. The short courses are more structured and include a mix of classroom instruction, interpretive walks, and wildlife watching. Most of these programs are conducted in Yellowstone's Northern Range, which has been described as the best place in North America for wildlife watching.

The Yellowstone Association Institute is a nonprofit field school operated in partnership with the National Park Service. We offer a variety of educational programs on the natural and cultural history of Yellowstone. This year we will provide nearly 100,000 contact hours of education to more than 3,500 park visitors (adults and families). Courses are based at our Lamar Buffalo Ranch field campus, at historic park hotels, and in the backcountry. For a complete description of the Institute program, please visit us at www.YellowstoneAssociation.org.

Qualifications:

Required: Bachelors degree in wildlife biology or a related discipline, strong communication skills, outdoor leadership experience, strong commitment to the Institute's educational mission, and extensive knowledge of wildlife ecology and management.

Desired: Wilderness First Responder certification, advanced degree in biology or a related discipline, and close knowledge of Yellowstone wildlife.

Compensation:

The Interpretive Wildlife Biologist will be paid \$11.00/hour for 30-50 hours per week, plus overtime and tips. Affordable housing may be available. The benefits of working in Yellowstone are many, including the opportunity to be part of a superb and dedicated teaching team in one of the world's most spectacular wilderness areas.

To apply:

To apply for this position, please send a resume and cover letter to:

Jenny Golding, Institute Program Manager

Yellowstone Association

Post Office Box 117

Yellowstone National Park, WY 82190

Institute Courses at Half Price for NPS Employees

The Yellowstone Association Institute offers a 50% discount to all park employees and their immediate families (spouse and children) for field seminar and backpacking courses that have openings within 30 days of the start date. This is a great way to broaden your knowledge of anything park-related, from wolves to wildflowers, raptors to thermophiles, or bears to waterfalls. Courses are taught by college professors, research scientists, park staff, and other experts. There may still be a few spaces in the upcoming courses listed below if you move quickly! Please call our Registrar at 307-344-2294 to register or request a complete course catalog. For more information about the Institute, visit our website at: www.yellowstoneassociation.org and click on "The Institute".

Start Date	Course Name
7/1/04	Ripple Effect: The Ecology of Wolf Restoration
7/3/04	Wildflowers for Beginners - Lake
7/4/04	Forest Ecology: Lessons from a Wildland Ecosystem
7/4/04	Introduction to Yellowstone Backpacking - Lower Geyser Basin
7/5/04	Pelican Valley Grizzly Bear Basecamp
7/6/04	Family Wonder Week
7/9/04	Artistic Field Journals
7/10/04	Lichens & Mosses in Yellowstone National Park
7/10/04	Glaciation & the Geology of Northern Yellowstone
7/12/04	Wildflowers & Wildfire
7/14/04	Plants of the Lewis & Clark Expedition
7/15/04	"Thirty-Seven Days of Peril": The Truman Everts Story
7/16/04	Lesser Known Carnivores of the Greater Yellowstone Ecosystem
7/19/04	Gray Wolves, Gray Matter: A Wolf Ecology Wrkshp for Educators
7/23/04	Geysers, Mudpots, & Hot Springs
7/25/04	Hoodoo Basin History Backpack
7/26/04	Backpacking in Grizzly Country - Lower Geyser Basin
7/27/04	Exploring Yellowstone's Microbes
7/30/04	Fly-Fishing the Catch & Release Way - Less Experienced
7/30/04	Day Hiking the Yellowstone Lake Area
7/31/04	Old Times at Old Faithful
7/31/04	The Bison of Yellowstone
7/31/04	Fly-Fishing For Women II
8/1/04	Map, Compass, GPS & Stars Across Yellowstone
8/3/04	The Fur Trade in Yellowstone
8/4/04	Ripple Effect: The Ecology of Wolf Restoration
8/6/04	Shaping the Northern Yellowstone Landscape
8/6/04	Day Hiking the Old Faithful Area
8/7/04	Yellowstone's Home Town: Mammoth Hot Springs
8/8/04	Introduction to Mammal Tracking
8/8/04	Heart Lake Women's Backpack
8/8/04	Deep Discoveries in Yellowstone Lake
8/9/04	Introduction to Yellowstone Backpacking - Canyon
8/13/04	Day Hiking the Cascade Corner

Classifieds

FOR SALE: Comfy recliner chair, \$25; braided rug, 8 1/2' x 11', \$75. 406-848-9987.

FOR SALE: 1992 Turbo Saab loaded Sunroof, runs great \$4000.00 OBO, 344-9068 or 406-581-9029.

The Community Library in the Canteen has two books by Dan Brown: *Angels & Demons* and the *DaVinci Code*. We are open Wednesdays from 7-9pm or by appointment. Contact Ann Johnson.

WANTED: Looking to buy a used pair of Wildland Fire Boots Men's 10 1/2. If you have a pair to sell call Dagan 406-838-2188.

FOR SALE: Fleetwood Mac ticket for sale for Friday, July 9, 8:00p.m. concert in Bozeman. Section 112 (Elevated section closest to stage. Just above floor seats.), Row N. Originally \$94.00. Will sell for best offer before showtime! Mary, 848-7192.

FOR SALE: Round glass-top rattan table with 3 fan chairs - \$175; Oval glass-top rattan table with two side chairs - \$150. Call 848-7933 after 6:00.

GCC's Youth Satellite Project has received a grant to help with programming and purchasing equipment – now we need the people to make this happen. Some of the programs we are looking at are: more dance classes, a possible evening dance w/ other area teens (Livingston, Bozeman, etc.), a pool tournament, and other possibilities. We would like to open the Center one night a week – Wednesdays, starting June 30th from 7:00-10:30 to allow local teens to have a safe place to hang out, play games, listen to music or just be with their buddies. If you are a parent of a teen that has used the Center in the past, or enjoy being w/ teens, we need your help. If we get 14 people to volunteer their time, they would only be committed to one Wednesday evening for the summer. If you can not commit an evening, but would like to be on the YSP's advisory board to help in planning upcoming programs/events call any of the members: Mary Heller (406) 848-7192, Bennett Rees (406) 848-7566, Heather Britton (406) 848-9470, or Janet Lewis (307) 344-7712.

Calling ALL Gardiner Teens (7th grade – 12th grade)
The Gardiner Community Center will be open Wednesdays evenings from 7:00-10:30, starting June 30th so you can have a place to hang out. We will be purchasing a ping-pong table, dartboard, and other games. Tell your friends. If you are interested in sitting on the Advisory Board to plan future events, such as a dance (possibly in August), call Aubrey Durfey (406) 848-7179, or any of the following board members: Mary Heller (406) 848-7192, Bennett Rees (406) 848-7566, Heather Britton (406) 848-9470, or Janet Lewis (307) 344-7712.

LIFE INSURANCE ***OPEN SEASON***

There will be an open season for the Federal Employees' Group Life Insurance (FEGLI) from September 1 through September 30, 2004. This is the first open season since 1999 and celebrates the 50th anniversary of the program.

During the open season, Federal employees in eligible positions will be able to enroll in the FEGLI program or increase or change current coverage without having a physical or answering any questions about their health. The earliest that newly elected coverage will be effective is September 1, 2005.

OPM will have a special FEGLI 2004 open season website set up prior to the start of the open season which will contain an election form and more information about the program.

This is *Your* Newsletter

Now Available On-Line!

This is our third edition of the Yellowstone News. It can only be a success with input from you and your fellow employees. Please email me at: kris_peters@nps.gov with articles and information you would like in the newsletter. This newsletter is now available on-line at: www.nps.gov/yell/newsletter.pdf

We are trying to save paper and printing costs so if you still want to receive a hard copy, please email me at the above address or call me at 307-344-2039. It is also available on the P:\drive in the file labeled "Newsletters" for those of you that have access to our parkwide drive.

The Body Shop® Is Bringing Its Store To Your Door

The Body Shop® has been around for 26 years and this new division is 2 years old as of April 1, 2004!

We bring the products to your home where you and your friends can pamper yourselves and sample the products. **We offer:**

Foot Spa*Body Spa***Faces are Forever***Make it Up**

As a host you earn free gifts and product at 50% off!

If you are running low on your favorite products or just want to sample new ones give me a call @ **406-223-4824 or 848-2209**. You may also be interested in pampering yourself and your friends by hosting one of our Girl's Night Out parties! We have some fantastic host specials for June as well as a new line of hair care and summer skin care products☺

Thank you for your business! – Becky Wyman

DID YOU KNOW?

Between fiscal years (FY) 1994 and 2002, after adjusting for inflation, the average annual cost of salary and benefits for one FTE at Yellowstone National Park increased by approximately \$9,000 (the non-inflation-adjusted figure is closer to \$16,000). Cumulatively, labor expenditures at Yellowstone National Park increased by \$8.1M over this nine-year period. Here's what happened:

The NPS measures staff hours in terms of Full Time Equivalents (FTE), or 2,080 hours of work annually. The total contribution of all YNP personnel in FY94 (whether full time, part time, etc.) equaled 483 FTE. In FY94, the average cost of salary and benefits for one FTE was \$44,149 in 2002 dollars. This average increased to \$53,126 by FY02. That's an inflation-adjusted 20% bump. The increased cost per FTE resulted in a labor cost increase of \$4.3M beyond inflation over the nine-year period. This can be attributed in part to automatic annual salary increases, which result in higher costs as terms lengthen. National initiatives to professionalize many positions, such as Ranger and Resource Careers, increased the base pay of an average FTE, and several factors increased the park's cost to provide personnel benefits. Finally, the addition of 72 FTE between FY94 and FY02 resulted in increased costs of \$3.8M.

Fortunately for Yellowstone, the management team at YNP recognized that maintaining a permanent staff at the 2002 level was beyond what the park could afford, given current fiscal challenges. Many other national parks did not have the same foresight, and are struggling to recover. The formation of the Position Management Review Board (PMRB) at YNP has allowed the management team to make permanent staffing decisions from a park-wide, not just division-wide, perspective. It has provided a forum for discussion of parkwide staffing needs, and has helped the management team to make informed financial decisions.

If you're curious about any related topics, feel free to call 344-2070 or email steve_bruner@nps.gov with questions.



Photo by Jim Peaco

This Great Horned Owl was putting on a show for park employees outside the Administration building in Mammoth on June 15th, 2004.

Welcome to Yellowstone!

Barbara Fowler, Administrative Support Asst. for Telecom in Mammoth, 6/13/04.

Christopher Geremia, Biological Science Technician (Wildlife), 6/13/04.

Doug Blanton, Biological Science Technician (Wildlife), 6/13/04.

Michael Reynolds, Supervisory Telecommunications Specialist, 8/8/04.



Photo by Jim Peaco

Great Horned Owl on June 15, 2004

United Blood Services

Is having a Mammoth/Gardiner Community

Blood Drive on Thursday July 1st from

1:00pm - 5:00pm. United Blood Services

Blood Mobile will be at the Mammoth

School Parking Lot.

This is a YFEA Sponsored Event

NORRIS RANGER MUSEUM VOLUNTEER STAFF

Name	Work Dates	Move In	Move Out
Dallas Koehn	6/22 – 7/2	6/21	7/2
Terry Lang	7/2 – 7/13	7/1	7/14
Jim and Bev Holcomb	7/5 – 7/16	7/4	7/17
Don and Joyce Thompson	7/16 – 7/27	7/15	7/28
Al Mebane	7/19 – 7/30	7/18	7/31
Frank Weingart	7/30 – 8/10	7/29	8/11
Don and Linda McGee	8/2 – 8/13	8/1	8/14
Ben and Jane Zerby	8/13 – 8/24	8/12	8/25
Bob and Anita Peterson	8/16 – 8/27	8/15	8/28
Glenn Clark	8/27 – 9/7	8/26	9/8
Bruce and June Freet	8/30 – 9/10	8/29	9/11
Judith and Joseph Winklemann	9/10 – 9/21	9/9	9/22
Clark Dixon	9/13 – 9/30	9/12	10/1

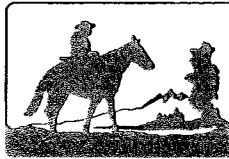


We are happy to officially announce the **Yellowstone Music Festival!** A common desire to provide visual and performing arts for all ages in the local community has culminated in a first-ever grassroots music festival in our very own Gardiner, MT, co-sponsored by the Gardiner Chamber of Commerce and the Electric Peak Arts Council. September 5, 2004 at the Arch Park will be filled with acoustic and roots-based music featuring local, regional, and national acts **Catie Curtis, Steppin in It, The Sibley's, Erik Koskinen, Sol Congress**, and local acts TBA. Put the date on your calendar, and plan to spend a fun, family-oriented day listening to outstanding music! If you are interested in becoming a festival volunteer or sponsor, please contact Jenny Golding at 848-9982.

YFEA FIELD TRIP

YFEA proudly presents the 3rd Employee Orientation (field trip) to the Grand Teton Indian Arts Museum on Thursday, July 22nd. Tour the museum, then have lunch or do a short hike along Colter Bay. We will be leaving Mammoth no later than 7:30a.m. and returning around 5:00p.m. Please bring a sack lunch and any snacks you want or money for lunch there - it should be a fun day. The cost is \$5.00 per person to cover fuel for the bus. Seating is limited to the first 40 people that sign up and pay by July 9th. Hurry and reserve your spot by contacting Colleen Athas in the Supply Center or call 344-2077.

This trip is sponsored by YFEA, but could only be accomplished through the outstanding support of the Superintendent's office. Please get your supervisor's approval before you sign up. This will be considered a regular work day, but no credit will be given for hours outside your regular tour of duty. No one will be in travel status, so per diem will not be paid. No alcoholic beverages will be allowed on the bus. Dress casually and please leave your uniform at home. Interior employees can meet the bus at Norris, Madison, Old Faithful and South Entrance.



Employees & Alumni Association
of the National Park Service

RECEIVED
JUN 02 2004
SUPERINTENDENT'S OFFICE

June 1, 2004

Janice Laye
PO Box 168
Yellowstone Park, WY 82190

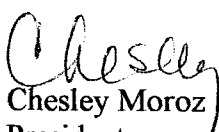
Dear Jan:

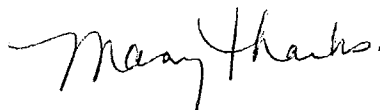
The Employees & Alumni Association of the National Park Service greatly acknowledges the contribution to the George B Hartzog, Jr. Educational Loan program in memory of Jerry O'Neal. The George B Hartzog, Jr. Educational Loan Program provides interest free loans for the children and grandchildren of members of the Employees and Alumni Association of the National Park Service. Tribute gifts are essential to the future of this program. Truly, the impact of this generosity will touch the lives of many people

Sylvia O'Neal has been notified of this tribute to Jerry. Please thank all those honoring Jerry with this contribution.

Again, thanks for your donation! The current and future employees of the National Park Service will be the beneficiaries of your thoughtfulness.

Sincerely,


Chesley Moroz
President



2004 FEDERAL HIGHWAY ADMINISTRATION ROAD CONSTRUCTION SCHEDULE FOR YNP & the AREA

Chittenden Road to Canyon Junction - This road segment will continue to be closed to visitor traffic for the entire 2004 season, including holidays. Reconstructed road width will be 24'. Visitors can access the Chittenden Road from the Tower side. This project started late summer 2003. Completion is expected in 2005.

Canyon Junction to Fishing Bridge Junction - Expect half-hour delays May 1st through November 4th. (Until November 4th, the contractor can have a 1-hour delay between midnight and 5 AM.) Holiday weekends, open without delays. This is primarily an overlay project. Construction started late summer 2003. Completion is expected in 2005.

Sylvan Pass to East Entrance - Construction starts on the east side of Sylvan Pass and continues to the East Entrance Station. Completion is expected in 2006.

June 21 st - July 20 th	OPEN with possible half-hour delays.
July 20 (8 PM) - September 3 rd	CLOSED 8 PM - 8 AM with half-hour delays during the open period.
September 7 th - October 3 rd	CLOSED 10 AM - 6 PM and 10 PM - 6 AM, no delays during open periods.
October 3 rd	CLOSED, 8 PM to all travel. (Contractor can work until Nov. 7 th , weather permitting.)

Holiday Weekends for Sylvan to East Entrance - Exceptions to the above

July 2 nd (6 PM) - July 5 th (6 PM)	4 th Of July Weekend, OPEN, no delays
Sept. 3 rd (6 PM) - Sept. 7 th (6 AM)	Labor Day weekend, OPEN, no delays

Notes

- - On September 3rd, 2004, the road will open at 8 AM and close at 6 PM (not 8 PM)
- - The 2005 Sylvan to East schedule will be similar to 2004 EXCEPT it will not have a full closure in Oct. '05. The windows of 10 AM - 6 PM/10 PM - 6 AM will be in effect Sept. 6th, 2005 - Nov. 6th, 2005.

Beartooth Highway (US HWY 212) - This road segment starts in Cooke City and extends easterly to the Wyoming state line. Expected completion, late summer 2006.

June 1 st - September 14 th	OPEN with half-hour delays Monday 6 a.m. through Friday 6 p.m. OPEN weekends without delays.
Sept. 14 th - October 14 th	CLOSED 10 PM - 6 AM, Monday through Thursday, with half-hour delays during the open period. OPEN weekends without delays.

Holiday Weekends for Beartooth Highway

Sept. 3 rd (6 PM) - Sept. 7 th (6 AM)	Labor Day weekend, OPEN, no delays.
---	-------------------------------------

JDR Memorial Parkway and Grand Teton National Park (US HWY 90/191/287)

Yellowstone's South Entrance to Leek's Marina in Grand Teton

All summer	OPEN with half-hour delays Monday-Friday
------------	--

Cunningham Cabin to Jackson Airport Junction

August 9 th - 27 th	OPEN with 15 minute delays
---	----------------------------

Rev. 06/25/04 LG

