

December 2004  
Volume 1, Issue 8

## Inside this Issue

- 1** Law Enforcement Stats & A Glance of Yellowstone
- 2** Classifieds, Peer Awards, Benefits Update & Use or Lose Reminder
- 3** YA Memberships & Christmas Bird Count
- 4** YA Institute Classes & Federal Campaign
- 5-8** Cookie Exchange, Gallery Open House, Tree Lighting
- 9-10** Jean (Nuetzel) Guza Going Away Party & YA, Xanterra Sale
- 11-12** YFEA Party & Welcome to Yellowstone

## Check us out at:

[www.nps.gov/yell/newsletter.pdf](http://www.nps.gov/yell/newsletter.pdf)

National Park Service  
PO Box 168  
Yellowstone National Park, WY  
82190

# Yellowstone News

## YELLOWSTONE NATIONAL PARK NEWS RELEASE:

The National Park Service Branch of Law Enforcement Services/ Criminal Investigations Unit at Yellowstone National Park has added a new "Park Tip Line". The phone number is 307-344-2132. Persons wishing to report a crime or criminal activity can call this number 24 hours a day.

They can leave their name and a call back number, or they can remain anonymous. The phone line is checked daily by an NPS Special Agent or Ranger. Tips are followed up on promptly.

Yellowstone National Park had over 4,000 criminal incidents in 2003. The public provided significant information in some important cases, including wildlife poaching and drug investigations.

This tip line offers another way for persons who want to make a difference to get involved. In some specific cases, cash rewards are offered for information leading to the arrest and prosecution of offenders. On every case, investigations need to know the following:

WHO, WHAT, WHERE, WHEN, WHY, WHICH, and HOW, and whether the reporting party wants to be contacted by an agent or ranger. Any questions about the Park Tip Line can be referred to Supervisory Special Agent Brian Smith at 307-344-2120.

Also, some preliminary law enforcement statistics for 2004 year to date:

2004	2003	2002
Citations (tickets)		
3763	3820	4264
Physical Arrests		
203	229	172
Motor Vehicle Accidents		
584	563	600
Deaths		
5	7	9

### *A Little Glance of Yellowstone*

*By: Brittany Clemens (age 9)*

A little glance of Yellowstone and you will surely see, that this place is different from what you expected from me. Its beauty and its natural shape, does not hide nor escape; the rugged mountains, fields of green, this wonderful place would never seem so keen. Because in the heart of this Yellowstone, lies a world wide wonder of all, if anyone would stop and notice, this place would stand so tall. Over the evergreens, mountains and peaks, over the hot pools, springs, and it speaks, as of its waterfalls, overlook views, canyons and animals are the clues. For this natural gift that everyone can share, of this Yellowstone with great pride and care. Where everyone is joined as one great big pack, where animals and people can never be held back. By the nature and minds that support this great place, the colors and beauty to be seen by the human race. A little glance of Yellowstone, it's a whole new world, of all the things and creatures curled, in this magical place of earth and sky, you never, ever, would want to say - good bye.

***Thank You Yellowstone!***

## The newest peer award recipients are:

**Jim Anderson** - Mammoth Motor Vehicle Operator  
**Joe Karnes** - Mammoth Motor Vehicle Operator  
**Tom Barr** - West Entrance VUA  
**Vicki McCoy** - Mammoth Laborer  
**Harlan Kredit** - Fishing Bridge Interpreter  
**Karen Rast** - Bridge Bay VUA  
**Martha Downing** - Mammoth Dispatcher  
**Nancy Tyson** - Mammoth Computer Assistant  
**Sean Murphy** - Mammoth Electronics Mechanic

## Electric Peak Arts Council Proudly Presents

Men Of Worth – January 24  
 Paul Taylor – February 11

	Individual show	Season Pass
Adult	\$8.00	\$20.00
Student (K-12)	\$5.00	\$10.00
Family	\$25.00	\$60.00
Children under 5 and Seniors over 70 admitted Free		

## Employee Reminder

Annual Leave, Use or Lose must be used by Saturday, January 8, 2005. If you can't use it always remember the Leave Share Program.



## BENEFITS UPDATE

**TSP Open Season** ends December 31, 2004. (15% for FERS; 10% for CSRS)

**Health Insurance Open Season** ends December 13, 2004.

**Flexible Spending Accounts Open Season** ends December 13, 2004.

Contributions can be made for medical expenses up to \$4,000; child care contributions can be made up to \$5,000.

**Catch-Up Contributions** for the next tax year begins December 11, 2004. Eligible employees over age 50 can contribute up to \$4,000 next year.

## Classifieds

**FOR SALE:** Two oil-burning stoves (one for \$50, one for \$25). Good for heating garages or outbuildings. Electric water heater, \$25. Call Christie at 848-7085.

**House-sitter needed** to watch our pets (dog, cat & fish) over the Christmas holidays (Dec 22-30<sup>th</sup>). If interested call Dan or Janet at 344-7712.

**FOR SALE:** 2002 Honda CR-V EX, 5-speed manual transmission, 40,000 highway miles, always garaged, white color, over \$1400 in extras including seat covers, trailer hitch, roof rack, ski rack, extra wheels and winter tires. NADA "Average Retail" book value of \$19,525 (without extras); sell for \$18,750. Call 344-7754 or 406-586-3744 for more information.

**FOR SALE:** 1992 Ford Taurus GL Wagon 4D 148K miles, very reliable, well taken care of, good condition, clean title, lots of extras, a few cosmetic blemes. Kelly Blue Book private party value of \$1,840. Dealer price near \$3,000. Asking \$1,590 or best offer. Will include a Saris roof rack system (\$400 value) for \$200. Call Steve at (307)344-7334.

**DOCTOR MURRAY** will be at the Exxon December 10th and every other Friday after that. Stop by with your pet if you need a vet.

2003 YFEA Christmas Party goes.



## The YFEA Holiday

**Party** will be held on Thursday, December 9 from 3:00 to 5:30 p.m. at the Mammoth Rec Hall. Everyone is welcome! (You don't have to be a YFEA member.) Look for flyers this week. Volunteers needed to help set up and clean up on the day of the party! Please contact Colleen Athas at x2077 or Leigh Anne Dunworth at x2018.



## Special Offer for Yellowstone Association Memberships at the Annual Holiday Sale Tuesday, December 7

Give a gift they'll love all year long—membership in the Yellowstone Association. Purchase a \$30 gift membership before December 31, 2004 and receive a \$10 Association gift card. \*

Join the Association or renew your membership on December 7, 2004 and receive a \$10 Association gift card\* and your choice of a 2005 Yellowstone Association calendar or the DVD, *Fire and Water*.

\*Gift card is not redeemable for cash but can be used toward purchases the day of the sale. Gift cards must be used within 12 months at Association stores or by calling toll free 1-877-967-0090.

# Yellowstone Christmas Bird Count Dec. 19, 2004

The **Yellowstone Christmas Bird Count** will be conducted **Sunday Dec. 19, 2004**, in the Mammoth /Gardiner area. For people not familiar with the Christmas Bird Count, it is an international method of counting birds, learning something about birds from other people, and having fun with fellow birders during the Christmas holiday season.

Whether you are a beginning birdwatcher, a moderately experienced birder, or an advanced observer, the Christmas Bird Count is still a lot of fun. If you have never participated you should give it a try! For those that have participated before we hope to see you again!

Meet at the: **Best Western  
Gardiner, Montana  
Dec. 19, 2004  
7:15 am**

**\$5 charge per person is mandatory (proceeds go the National Audubon Society to defray CBC publication costs)**

Bring personal warm clothes, snacks, and drinks for the day. All participants will be invited to McEneaney's for lunch.

**Please RSVP if you are planning on attending.**

Thanks,

**Terry McEneaney** H (406)848-7942  
O (307)344-2222  
[terry\\_mceneaney@nps.gov](mailto:terry_mceneaney@nps.gov)

**Hope to see you there on Dec. 19th!**



---



---

## Institute Courses at Half Price for Park Employees

The Yellowstone Association Institute offers a 50% discount to all park employees and their immediate families (spouse and children) for field seminars that have openings within 30 days of the start date. This is a great way to broaden your knowledge of anything park-related. Courses are taught by college professors, research scientists, park staff, and other experts. There are still openings in most of our winter courses! Please call our Registrar at 307-344-2294 to register or request a complete course catalog. For more information about the Institute, visit our website at [www.yellowstoneassociation.org](http://www.yellowstoneassociation.org) and click on "The Institute".

Start Date	Course Name
January 6-9, 2005	Level I Avalanche Safety
January 12-14, 2005	Legendary Yellowstone Wolves
January 15-16, 2005	Wilderness First Aid
January 17-19, 2005	Yellowstone's Wolves
January 19-21, 2005	Basic Snow Tracking
January 21-23, 2005	Winter on a Sliver
January 24-27, 2005	Ripple Effect: The Ecology of Wolf Restoration
January 28-30, 2005	Winter Tales & Trails
February 1-3, 2005	Coyote & Raven: Fact & Folklore
February 4-6, 2005	Winter Nature Journaling in Wonderland
February 7-9, 2005	Complete Wildlife Photography: Art, Ecology & Stewardship
February 11-13, 2005	Red Fox: Yellowstone's Secretive Little Dog
February 16-17, 2005	Cougars: Ghosts of the Rockies
February 20-23, 2005	Wolf Watching in Yellowstone
February 24-27, 2005	Snow Tracking: A Window on Winter Wildlife Ecology
February 26-27, 2005	The Birds of Winter
March 4-6, 2005	Wolf Conservation & Management
March 11-13, 2005	Beyond Delisting: The Future of Wolf Conservation
March 14-16, 2005	The Y2Y Initiative: Yellowstone the Island?
March 18-21, 2005	Fang & Flesh: Hunter & Hunted in Yellowstone
March 21-23, 2005	Winter Tales & Trails
March 24-26, 2005	Lesser Known Carnivores

---



---

## Support Important Projects in Your YNP Division through the Combined Federal Campaign!

The Yellowstone Park Foundation is proud to have been accepted again this year as an approved charity for the Combined Federal Campaign (CFC). As you may know, the CFC is the workplace charity fund drive for all National Park Service staff, as well as members of the Armed Forces and other federal employees. Fewer than one in one ten charities meet the standards to qualify for this fund drive, and it is an honor to be included.

The Yellowstone Park Foundation's mission is to fund projects and programs that protect, preserve, and enhance Yellowstone. Please consider making a contribution to the Foundation through this fall's CFC. It's easy -- just write in their official CFC # 2379 on your payroll deduction form. Even a small payroll deduction each month adds up to a significant gift for Yellowstone at the end of the year. To learn more about making a contribution through the Combined Federal Campaign, contact Bette Cates, Human Resources/Payroll Coordinator, at (307)344-2051. For more information about the Yellowstone Park Foundation and the projects they support, visit them online at [www.ypf.org](http://www.ypf.org).

# Yellowstone Park and Gardiner Community

## *Holiday Cookie Exchange and Craft Activity for Children*

Sunday

December 12th

6:30 PM to 8:00 PM

at the Yellowstone Park School  
Gymnasium in Mammoth

- *Come and share cider and holiday treats*
- *Bring homemade goodies for exchange (at least two dozen suggested), plus a plate of treats to share for the evening*
- *Exchange will be one for one*
- *Children can decorate graham cracker houses (decorations provided)*
- *Remember a container for your new treats*

Sponsored by the Yellowstone Park PTO  
Everyone welcome



# Yellowstone Gallery Holiday Open House

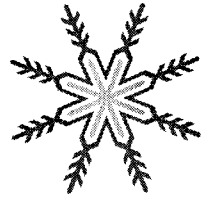
**Fri. Eve Dec. 3, 6 - 9PM**  
**Sat. Dec. 4, 10AM - 6PM**

**Everyone is Invited to  
join in the festivities.**

**Live Music on Friday  
Evening Featuring Local  
Talent Jenny Golding!**

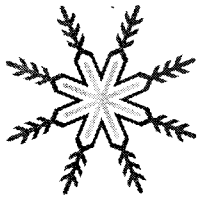
**Hot Cider, Baked Goodies  
from our Tulikivi Oven and  
other refreshments served**

**Come Join the Fun!**  
**Mingle with your friends &  
neighbors**



*Please join National Park  
staff in celebrating the season with*

***THE ANNUAL  
CHRISTMAS TREE  
LIGHTING &  
COMMUNITY OPEN HOUSE***

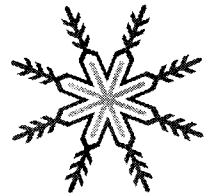


*Wednesday, December 8, 2004  
5:00 p.m.*

*Mammoth Recreation Hall*



*Entertainment will be provided  
by Little People's Learning Center.*



*Santa will be visiting and  
available for photos with the kids.*

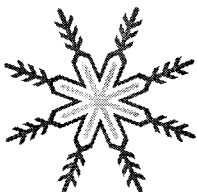


*Light refreshments, cake and punch  
will be provided.*

*Please bring hors d'oeuvres to share.*



*For more information  
please call the Public Affairs Office  
at (307) 344-2012.*



# Have your child's photo taken with Santa at the Annual Christmas Tree Lighting & Community Open House

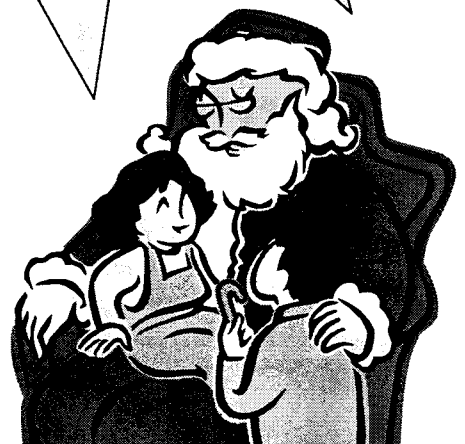
The ceremony will begin at 5:00 p.m.  
on Wednesday, December 8, 2004

**Photos will be taken  
after the ceremony.**

**Please allow 5 days  
for delivery.**

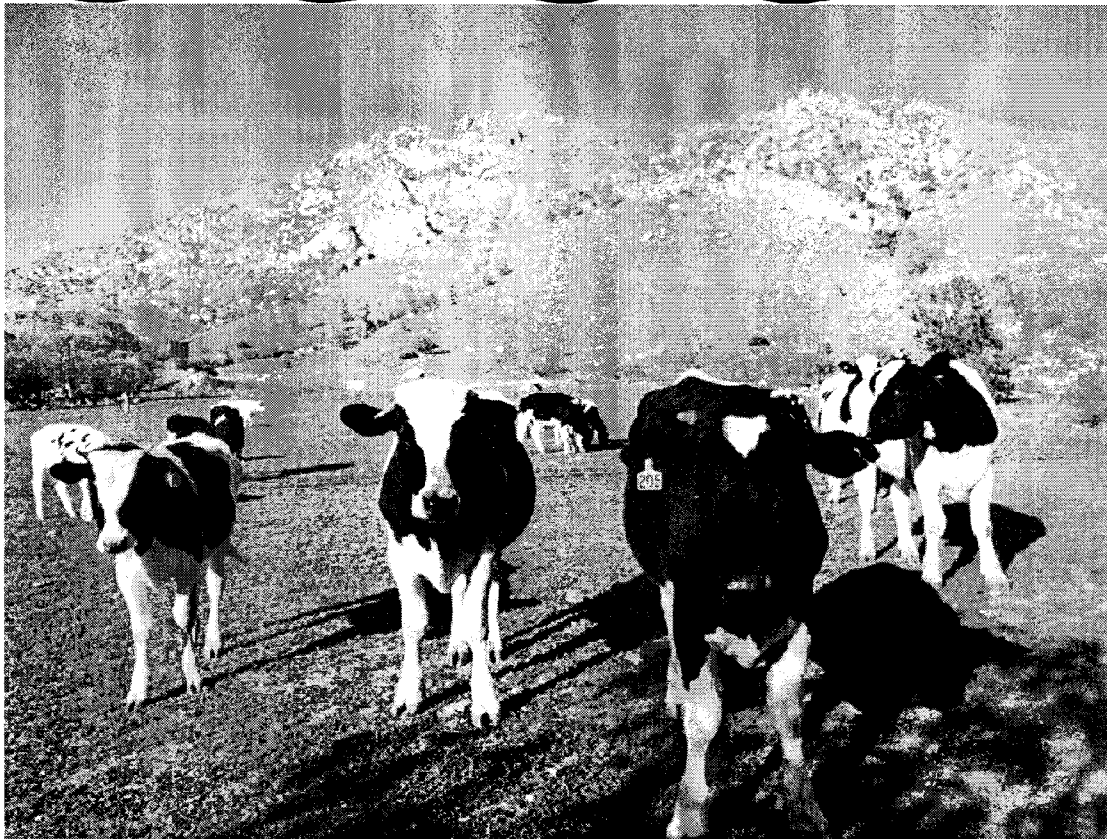
2 photos for \$12.00  
or 4 for \$20.00!  
Includes greeting card  
frame and envelope.

Sponsored by  
**Little People's  
Learning Center.**





# JEAN, WE HATE TO SEE YOU MOOOOVE!

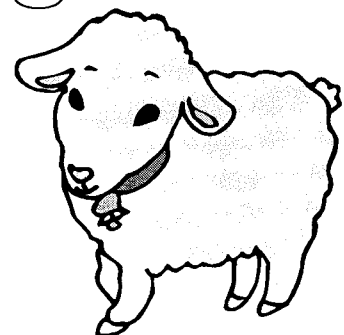


COME JOIN US IN WISHING JEAN (NUETZEL) GUZA  
WELL ON HER NEW ADVENTURE WITH THE FARM  
SERVICE AGENCY IN BOZEMAN.

WHERE: HUMAN RESOURCES  
OFFICE (FORMALLY KNOWN  
AS THE CANTEEN GYM)

WHEN: DEC 8<sup>TH</sup> , 3 P.M.

Baaad news -  
Jean's leaving





**ANNUAL HOLIDAY  
SALE WITH THE  
YELLOWSTONE  
ASSOCIATION  
& XANTERRA**



**Tuesday, December 7, 2004**

**9:00 a.m. - 2:00 p.m.**

**Mammoth Hotel Map**

**Room and Lobby**

*Special event this year!*

*Book signing from 11:00 am to 1:00 pm  
with author/photographer Tom Murphy  
and author Ruth Quinn*

Great bargains on books, clothing and other merchandise. Everything must go! Also, get a 20% discount on all regular priced items at the Albright Visitor Center and the Mammoth Hotel Gift Shop.



*See you there!*

# YFEA HOLIDAY PARTY

GRAND PRIZE IS A  
"FROSTY FUN"  
PACKAGE THAT  
INCLUDES 2 NIGHTS  
AT OLD FAITHFUL  
SNOWLODGE, ROUND  
TRIP SNOWCOACH  
RIDE, 2 BREAK-  
FASTS, A WELCOME  
GIFT, AND A DIS-  
COUNT CARD FOR  
THE GIFT SHOPS.

OTHER GREAT  
PRIZES FROM  
CONCESSIONERS  
AND  
LOCAL MERCHANTS



RAFFLE TICKETS ARE  
AVAILABLE FROM:

JIM SYKES  
TINA HOLLAND  
COLLEEN ATHAS  
AND AT THE DOOR

RAFFLE TICKETS ARE \$1 EACH,  
OR 6 FOR \$5, AND 15 FOR \$10.

**Mammoth Rec Hall.**  
**Thursday, December 9. 3:00 to 5:30**

**Music - Food and drink provided - Raffle Prizes**



**New Faces & New Places**

**Welcome to Yellowstone!**



Judy Jennings, Supervisory Concessions Management Specialist, December 12, 2004

Colleen Watson, Budget Analyst in Interpretation, November 28, 2004

Raymond Counts, Maintenance Mechanic at Lake, November 14, 2004

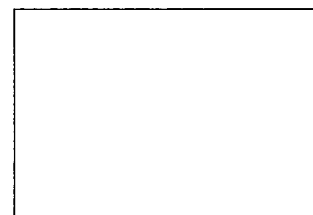
Andrew Bilton, Information Technology Specialist (CSS), November 14, 2004

Kathy Cunningham, Financial Support Technician, October 24, 2004

Danel Nickerson, Financial Support Technician, October 24, 2004

---

National Park Service  
PO Box 168  
Yellowstone National Park, WY 82190  
United States



ADDRESS CORRECTION REQUESTED