



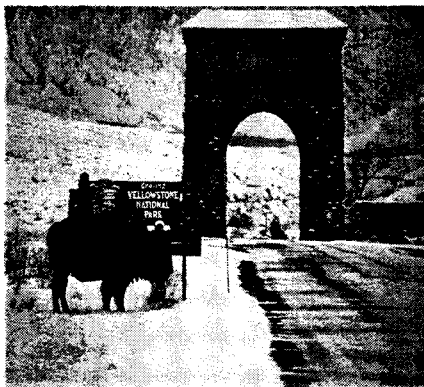
# THE YELLOWSTONE NEWS

March 20, 2003

Next Deadline: April 7, 2003

## BISON CAPTURE OPERATIONS-UPDATE

As many of you already know, during the week of March 3, 2003, 231 bison were captured at Stephens Creek and taken to slaughter facilities. The bison had been moving toward the northern park boundary at Reese Creek; and in fact, 37 bison had moved onto Royal Teton Ranch property – outside the park boundary. Before the decision was made to send these animals to slaughter, numerous attempts were made to haze the bison either back into the park or farther inside the park boundary and away from danger. The decision to capture these animals was made in accordance with the Inter-agency Bison Management Plan and current operating procedures agreed to by all parties involved (National Park Service, United States Forest Service, Montana Department of Livestock,



Montana Department of Fish, Wildlife and Parks, and Animal and Plant Health Inspection Service). These documents indicate that when the bison population in late winter, early spring is over 3,000 animals and they are moving onto lands where cattle are being grazed, the bison will be captured in the Stephens Creek facility and sent to slaugh-

ter facilities. Although park staff were unable to do a flight survey because of weather conditions, other recent flights indicated that bison population numbers were around 3,800 animals. Park staff will continue to monitor bison activity on the north side of the park and hazing and/or capture could continue. Reports from the Montana Department of Livestock indicate that all meat, heads and hides of the bison taken to slaughter have been distributed to Native American or other social service organizations.

## Spring Bear Emergence

Spring is just around the corner and that means grizzly and black bears are emerging from their long winter sleep. Some bears have been spotted in Yellowstone and reports of active bears are trickling in to the Montana Department of Fish, Wildlife and Parks. Other recent sightings have been in Pinedale, Wyoming, and Buffalo Valley near

Moran, Wyoming.

Bears wander over the big game winter ranges in early spring searching for winter-killed deer and elk. This year's mild winter will make it difficult for early emerging bears to find food, and this could bring bears into conflict with people.

**BE ALERT & AWARE!!**



**The Yellowstone News** is a monthly National Park Service employee newsletter that is published by the Public Affairs Office. Submit articles, notices of events, announcements, and classified ads, by calling 344-2013, faxing to 344-2014, emailing to [Yell\\_Public\\_Affairs@nps.gov](mailto:Yell_Public_Affairs@nps.gov), sending via interdepartmental mail or mailing to P.O. Box 168, Yellowstone National Park, Wyoming 82190.

## Yellowstone Road Update – Construction (changes may occur)



**Madison Junction to Norris Junction:** Third year of a three-year project. Should be completed by mid-September.

April 15 – mid September      **OPEN 24 hours/day with 1/2 hour DELAYS**  
 May 23 (noon) - May 27 ( 6 a.m.)      **Memorial Day weekend – OPEN WITHOUT DELAYS**  
 July 3 (9 a.m.) - July 6 (6 a.m.)      **Fourth of July weekend – OPEN WITHOUT DELAYS**  
 August 29 (noon) - Sept. 2 (6 a.m.)      **Labor Day weekend – OPEN WITHOUT DELAYS**

### **Canyon to Tower, (Dunraven Pass) - Road reconstruction.**

Canyon Junction to Chittenden Road closed all season. The barricade will be located on the south side of the Chittenden Road entrance. The Tower to Chittenden Road and Chittenden Road to the Chittenden Road Trailhead parking area will remain open.

### **Canyon to Fishing Bridge, (Hayden Valley) - Surface overlay.**

Possibly starting in early spring (exact date not yet known). From 5 a.m. to Midnight the road will be OPEN with 1/2 hour delays. From Midnight to 5 a.m., the road is OPEN with one possible, one-hour delay.

**Spring Road Schedule:** Yellowstone National Park has closed to over-snow vehicles and spring plowing has begun. Roads will open to the public at 8 a.m. on the day listed (subject to road and weather conditions) as follows:

**April 18** Mammoth to Norris Junction to Madison Junction to Old Faithful; Madison Junction to West Entrance.

**April 25** Norris to Canyon

**May 2** Canyon to Lake, Lake to East Entrance

**May 9** Tower to Tower Fall, Lake to West Thumb, West Thumb to Old Faithful, and South to Old Faithful.

*These roads could open as early as May 2 if snow and plow conditions allow.*

Cooke City via Colter Pass to the Chief Joseph Scenic Highway intersection to the Long Lake gate shall open as soon thereafter as possible.

**May 23** Long Lake Gate over the Beartooth, and Tower Falls to Chittenden Road and Chittenden Road to the Chittenden Road trailhead.



## Mammoth Clinic

### Park Medical Services Now Provided by Medcor

On March 1, Medcor, Inc. assumed responsibility for providing medical services at Yellowstone. Medcor is a company that specializes in operating clinics for other organizations. The company was founded in 1984, and now operates 111 clinics nationwide. Medcor's closest operations to the park include clinics at the Stillwater mine in Nye and in Big Timber, Montana, where the company has provided 24 hour service for many years. They also run a clinic at the FMC Corp. in Green River, Wyoming and at Potlatch in Lewiston, Idaho. Other sites further away include clinics at Universal, Paramount, Fox, and other movie studios in Hollywood, factories in Illinois, distribution centers in Texas, and even a clinic on Midway Island in the middle of the Pacific.

This is the company's first operation in a National Park. "We are thrilled to have this opportunity to work with the NPS and other concessionaires," says Medcor's founder and president, Philip Seeger. "We are confident in our medical and operating capabilities, but we know we have much to learn about this unique environment." Seeger adds that keeping the Mammoth Clinic staff in place has helped the transition get off to a smooth start. "Everyone we have met has been very open and helpful in getting Medcor oriented to the park logistics and needs."

Medcor's first service to go on-line at midnight on March 1, was 24-hour emergency medical control for NPS emergency medical services. In partnership with Eastern Idaho Regional Medical Center, Medcor provided combination cell-phone / satellite phones for installation in NPS ambulances. These state of the art communication tools, combined with the park's existing radio patch system, should ensure that rangers can

reach an emergency room physician any time from just about anywhere in the park.

On Monday, March 3, the Mammoth Clinic reopened after a weekend of painting, reorganizing and moving new equipment and supplies to replace old equipment that had been moved out. Medcor retained the Mammoth staff and is keeping the clinic's schedule the same.

Patients should note a few important changes, however. First, all of the clinic's medical records were retained by the prior concessionaire, West Park Hospital in Cody; therefore, Medcor does not have medical records in the clinic for most patients. Even though many patients have already signed releases and requests for copies of their records, most copies have not been delivered to Medcor yet. Patients who have not already requested copies from West Park should do so if they want their records available at Mammoth. Forms for the request are available at the clinic.

Second, patients will have to register with Medcor the first time they visit the clinic, so please allow extra time to complete the paperwork before scheduled appointments.

Medcor will open the Old Faithful Clinic on May 5 and the Lake Clinic on May 12.

## Rhythmic Ski

Coal-black raven overhead,  
Searching wide for something dead,  
So that he can be well-fed,  
Coal-black raven overhead.

Bushy coyote comes a-walking,  
Gopher, vole, or mouse he's stalking,  
With his howls and yips he's talking,  
Bushy coyote comes a-walking.

Grizzly bear is deeply slumbering,  
Hunger, now, is unencumbering...  
Soon will force him outward lumbering,  
Grizzly bear is deeply slumbering.

Alpha wolf is lying still,  
She and others by their kill,  
Resting, now they've had their fill,  
Alpha wolf is lying still.

Bison pushing snow aside,  
Layered fur protecting hide -  
On these traits survival rides,  
Bison pushing snow aside.

Geysers, steam vents, mudpots, springs,  
Vapor clouds and plumes and rings,  
Settling rime on everything,  
Geysers, steam vents, mudpots, springs.

Fir and lodgepole standing tall,  
Snow and frost have flocked them all -  
They, too, answer winter's call,  
Fir and lodgepole standing tall.

River, waterfall and lake,  
Quieter times 'til winter's wake,  
Summer's flow is now at stake,  
River, waterfall and lake.

Stars and planets shining bright,  
With their dancing, shivering light,  
In the dark and frozen night,  
Stars and planets shining bright.

Yellowstone, your finest hour,  
May be when the weather's dour -  
Winter's hand holds total power,  
Yellowstone, your finest hour.

Yellowstone is winter's gift,  
Silent beauty, crystal drift,  
Wind blows cold, yet spirits lift.  
Yellowstone is winter's gift.

*Written by: Neysa Dickey, Canyon*

# Employment Opportunities

PAGE 5

**Don't just see it  
Experience it!**  
Spectacular scenery  
Great hiking  
Adventurous coworkers  
**YELLOWSTONE!**  
Hotel & restaurant jobs  
Room & board plan  
Apply online at  
**Yellowstonejobs.com** or  
Call (307) 344-5324. YNP  
Lodges. Beauty awaits  
AA/EOE/M/F/D/V.

The non-profit **Yellowstone Association** seeks an experienced individual to assist the Registrar and Operations Manager at the Yellowstone Association Institute office in Mammoth Hot Springs. The assistant registrar will help with student registrations, correspondence, and daily office operations for this educational program. The season for this position will run from April 18, 2003, to August 15, 2003. The work-day schedule will be Friday, Saturday and Sunday, 10 hours a day for a 30 hour week. The pay is \$8.00/hour. For a more detailed Position Announcement see our website at <http://www.yellowstoneassociation.org/aboutus/jobs.htm>. To apply, please send a resume, cover letter, and three professional references to: Pam Cahill, Institute Operations Manager, Yellowstone Association, P.O. Box 117, Yellowstone National Park, WY 82190. Applications must be received no later than March 23, 2003.

## **Weight Lifting Classes** *Taught by Mary Stringfield, RN* *Certified American College of Exercise* *Personal Trainer*

**Tuesdays**  
5:30 p.m. – 6:30 p.m.  
*Or*  
6:30 p.m. – 7:30 p.m.

March 18 – April 8	Amazing Abs and Back
April 15 – May 5	Toning the Lower Body
May 8 – May 29	Fun with Stability Balls
	(large rubber balls used for strengthening and stretching)

Held at the Therapeutic Associates PT office located at the  
Yellowstone Village Inn  
For questions or to sign up, call 344-7713

**\$30 each  
4-week  
session**



## 24th Annual Park to Paradise Race – May 10, 2003



It's not too soon to start training! Registration is at the Carbella Fishing Access from 9:00 a.m. to 10:00 a.m. Race begins at 10:30 a.m.

Volunteers are needed to help organize and coordinate the race. Call Ann Rodman at 848-7033 or 344-2216, if you are interested.



### Retirement – John Whitman, Principal

After 38 years of teaching (1965-2003) in Yellowstone National Park, John Whitman is retiring. He has taught hundreds of students and has helped in the lives of many families who reside or once resided in Yellowstone. His retirement celebration offers the opportunity to celebrate the legacy and the legend of a caring teacher who spent his life helping others.

**May 24, 2003**

**Mammoth Recreation Hall**

**COST: \$17/Adults \$10/Children**  
(\* Cost includes a donation for a gift for the Whitman's and cost of the band.)



#### Schedule:

4:00 p.m.	Social Hour
5:00 p.m.	Dinner Begins*
7:00 p.m.	Program
8:00 p.m.	Dance (Country Band)

\*Xanterra will provide the main course for dinner and local residents will bring potluck side dishes and appetizers.

**Lodging** – Rooms have been block-booked. Make reservations with Xanterra Lodges by calling Tami Whittlesey, 307-344-5518. Please mention John Whitman's Retirement Celebration.

**Volunteer Help Needed** – Local residents please call Mary McCaleb (344-7772) or Joan Marty (344-6595). Help make this an exciting tribute for John and Bev Whitman.

**Questions, contact, mailing address and more information:** c/o David Stringfield, P.O. Box 568, Yellowstone Park, WY 82190, (307) 344-7713, email: johnwhitmanretires@hotmail.com

## Please Register Early!!!

## FIRST NOTICE

### MAMMOTH SCHOOL BOARD NOMINATIONS AND ELECTION - 2003

From: "RULES and PROCEDURES" developed and adopted on May 12, 1959, and later amended/accepted by the school board committee on January 13, 1987, and on September 30, 1997, procedures to be followed in the Election of Yellowstone National Park School Board:

The School Board will consist of three members as follows: Chairperson and two Members. Terms of office will be for three years and staggered in such a manner that one new member is elected each year.

One position on the Mammoth School Board will be open each year; the incumbent will serve a three-year term. A second position, Representative on the Gardiner School Board, will also be open every other year; the incumbent will serve a two-year term.

<u>Member*</u>	<u>Position</u>	<u>Term Expires</u>
Rick Hoeninghausen	Member	06/30/05
Lori Gruber	Member	06/30/04
Andrew Mitchell	Member	06/30/03
Scott Cote	Representative	06/30/03

#### ELECTORS:

1. Voters must be 18 years of age or over.
2. All permanent employees of Yellowstone National Park, parents with a child in the Yellowstone National Park School, Park Concessionaires, and Cooperating Agencies, who live in Mammoth Hot Springs, are eligible to vote. The spouses of employees listed in the above group are eligible to vote.

#### REGISTRATION of Voters:

1. All eligible voters are required to register at the National Park Service Administration Office, weekdays from 8:00 a.m. to 4:30 p.m.
2. Those who voted in last years' School Board Election need not register again this year.
3. New members of the Mammoth Community or qualified voters who did not vote in the previous school board election must register at the Administration Office to qualify for participation in this year's election.
4. Register at the Administration Office. Registration closes at 4:30 p.m., Friday, May 2, 2003.

**5. Current registered voters are:**

Joe Bueter	Karen Hoeninghausen
Juanita Bueter	Rick Hoeninghausen
Allan Bush	Dan Kirschner
Barbara Bush	Duane Martinz
Sue Consolo-Murphy	Joan Marty
Peter Galindo	Ellen Petrick-Underwood
John Gruber	Eric Robinson
Lori Gruber	Shannon Robinson
Brad Harbach	Dave Stringfield
Carmen Harbach	Bev Whitman
Mary Hektner	John Whitman

**NOMINATIONS for School Board Members:**

1. Any eligible voter, as defined under "Electors," is eligible for nomination as a candidate for membership on the School Board.
2. Nominations shall be filed with the Chairperson of the Election Board on a form provided for that purpose; a copy of which will be retained by the School Board voter who makes the nomination. The nominee must consent to having his or her name placed in nomination. A nomination form may be obtained from the Administration Office.
3. Nominations are now open and will close at 4:30 p.m., Friday, May 2, 2003.

**SCHOOL BOARD ELECTION:**

Tuesday, May 13, 2003 - Polls will be open from 7:30 a.m. to 5:30 p.m.

The polling place will be the Administration Office at Park Headquarters in upper Mammoth.

**Absentee Ballots:**

Voters who will be away from Mammoth on Election Day may vote by absentee ballot. Absentee ballots will be available upon application to the Park Service Administration Office and must be submitted by Monday, May 12, 2002.

**Reminder:**

Voters may obtain a copy of the Rules and Procedures (recently amended) to be followed in the election of the Yellowstone National Park School Board. Copies are available at the Administration Office.

**Election Board:**

Chairperson: Joanne Timmins, Chief of Administration  
 Members: Jean Nuetzel and Kris Peters



## New License Plate Benefits Yellowstone

The Yellowstone License Plate is now available! This new specialty plate, which was introduced in February, was created by the Yellowstone Park Foundation as an exciting new way to raise money for the park. The plate features a grizzly bear set against a colorful green, orange and blue background, and was designed by Kalispell-based Fossil Advertising & Design Company.

Cost of the plate is \$20, 100 percent of which goes directly to the Foundation, plus a one-time fee of \$10 collected by the Motor Vehicle Office. Proceeds from the sale and renewal of the plates help the Foundation fund important projects and programs for Yellowstone that are beyond the financial capacity of the National Park Service.

The Montana Legislature passed a law several years ago allowing for specialty license plates to be sold to motorists to benefit Montana-based, non-profit organizations. Many other states have had similar programs for years – California's Yosemite plate, for example, has raised millions of dollars to help protect Yosemite National Park.

To apply for a Yellowstone License Plate online, log on to [www.yellowstoneplate.com](http://www.yellowstoneplate.com). You can either purchase your plate with a credit card online or send the completed, downloaded application and a check for \$20 to the Yellowstone Park Foundation; 222 E. Main, Suite 301; Bozeman, MT 59715. After the approved application has been sent back to you, take it to your county motor vehicle office, along with your registration renewal form, and pick up your plates.

Yellowstone enthusiasts who do not live in Montana may purchase a collector's-edition Yellowstone plate from the Foundation for \$30. This real State of Montana license plate is printed with the characters AAA.000 and makes a great souvenir or gift for friends and family members. A color photo of the Yellowstone License Plate is available on the Foundation's website at [www.ypf.org](http://www.ypf.org). For more information, or to request that an application be sent to you by mail, call the Foundation at 406-586-6303.



*Yellowstone Park Foundation staff*

## Yellowstone Federal Employee Association

If you or someone you know would like to become a YFEA officer please fill out the following form and return it to Kris Peters in Administration or Jim Sykes in the Carpenter Shop. *Please only* list people who have *agreed* to become officers, if elected.



Name:	Vice President	
	Secretary	
	Events Coordinator	



The YFEA is also planning a sloppy joe luncheon on Thursday, April 10th from 11:30 a.m. – 12:30 p.m. Be there to share great ideas for upcoming events. Watch for flyers.

## Ducks Unlimited Raffle Tickets

- 1<sup>st</sup> prize - M70 Winchester Classic LT .300 ultramag
- 2<sup>nd</sup> prize - Fly rod & reel w/ assorted flies
- 3<sup>rd</sup> prize - half day guided fishing trip on Yellowstone Lake
- 4<sup>th</sup> prize - half day horse back ride for 2 people.

Tickets will be sold at the Food Farm for the next couple of weeks, and if you miss that, please call Phil Davidson at 848-7667 or Dan Mahony at 344-7712. Tickets are \$5.00/each or \$10.00/3 tickets. The drawing is May 3, 2003.

## Classifieds

**For Sale:** 2001 Ski-Doo Touring 500F 2-up snowmobile. 6300 meticulously maintained miles, in perfect condition, \$2500, OBO. 1980 Arctic Cat Jag 431cc snowmobile, less than 1500 miles! Runs fine, \$175 OBO. Cargo tow sled, decent condition, \$75. Snowmobile jack stand, practically new \$30. Call Richard at 242-2619.

**Wanted:** Used couch or loveseat. Will haul if necessary! Call (406) 570-8337.

**FREE:** 1987 Honda Prelude to a good mechanic, needs work. (307) 344-9272.

**Wanted:** Looking for a person or family to share a range fed bison. \$3.20/lb. (307) 344-9272.

**Veterinarian Visit:** Dr. James Murray, DVM of Livingston will be at the Gardiner Exxon on Friday, March 28th and every other Friday thereafter. Call (406) 222-3700 if you would like to schedule an appointment for a home visit.

April 2003  
Yellowstone National Park School

Sun	Mon	Tue	Wed	Thu	Fri	Sat
		1	2	3	4	5
		No School				
		Spring Break				
6	7 No School Swimming grades 1, 5, 6	8 School Board Mtg. 4:15 p.m. Swimming grades 2, 3, 4	9 Swimming grades 1, 5, 6	10 Swimming grades 2, 3, 4	11	12
13	14 Swimming grades 1, 5, 6	15 Swimming grades 2, 3, 4	16 Swimming grades 1, 5, 6	17 Swimming grades 2, 3, 4	18	19
20	21 Swimming grades 1, 5, 6	22 Swimming grades 2, 3, 4	23 Swimming grades 1, 5, 6	24 Swimming grades 2, 3, 4	25 Science Fair Day	26
27	28 Swimming grades 1, 5, 6	29 Swimming grades 2, 3, 4	30 Swimming grades 1, 5, 6	May 1 Swimming grades 2, 3, 4		
Achievement Tests this week						