



THE YELLOWSTONE NEWS

FEBRUARY 15, 2002

NEXT DEADLINE: MARCH 9

THE INTERNET IS BACK UP AND A NEW INTRANET IS HERE!

Yellowstone National Park employees are heaving a huge sigh of relief. After an absence of more than two months, Web sites and non-government email addresses are back up and running. With the National Park Service back on, John Wright, a spokesman for the Interior Department, says they are about 40 percent connected.

Just in time too, as the Supplemental Environmental Impact Statement for winter use in Yellowstone and Grand Teton national parks and the John D. Rockefeller Memorial Parkway is scheduled to be released next week. In addition to the park's government-run Web site, a private site – www.winteruseplanning.net will have a link available.

In addition to the internet access, NPS personnel have also been introduced to the initial version of InsideNPS, the new NPS Intranet site. It's still a work in progress but it will help all of us in the Service do our jobs better.

This site "is intended as a first step in demonstrating new Intranet capabilities for the efficient management, sharing and delivery of internal information", according to a recent memorandum from Deputy Director Donald Murphy.

InsideNPS will improve communications among all employees. Features include the "daily news" which incorporates the Morning Report, web-pages for all Service-wide programs, as well as many other features.

NPS employees can access this new site at <http://inside.nps.gov>

Courier Run Schedule

Friday, February 15 – Mattrack

Wednesday, February 20 – Mattrack

Friday, February 22 – Mattrack

Tuesday, February 26 – Mattrack

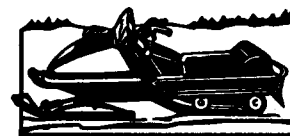
Friday, March 1 – TBA

**Tuesday, March 5 – Road Plowing underway
status of Courier as yet undetermined**

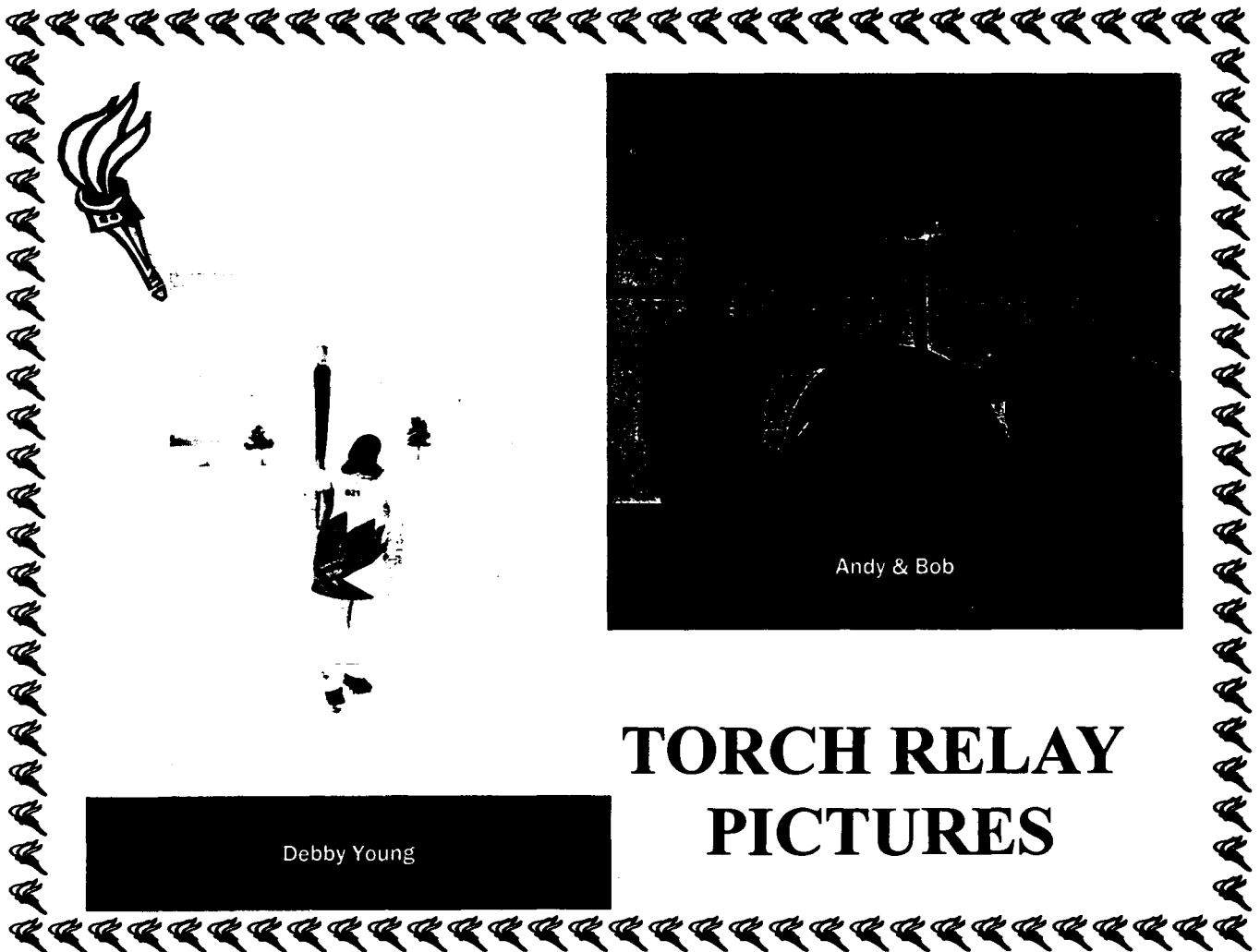
**Friday, March 8 – Road Plowing underway
status of Courier as yet undetermined**

Once the road plowing starts we could probably continue the courier routine if we have continued access to the Mattrack. Any of the above that are listed as Mattrack runs are dependent on, 1) the Mattrack van being operational, and 2) not being preempted by other park use of the Mattrack.

If you have questions regarding courier operations, please contact Russ Miller or Keith Young at the Mammoth Ranger Station. Russ does the scheduling, but Keith will be coordinating Courier operations.



The Yellowstone News is a Yellowstone employee newsletter, published monthly by the Public Affairs Office. To submit articles, notices of events, classified ads or announcements please email Yell_public_affairs@nps.gov, call 344-2013, or send via interdepartmental mail to 344-2014. Please include your name and phone number with all submissions.



TORCH RELAY PICTURES

WINTER ROAD REMINDERS

Wheeled Vehicles

The only park road that remains open to wheeled vehicles through the winter is the road from Gardiner, Montana, at the North Entrance to Silver Gate & Cooke City, Montana, near the Northeast Entrance.

Groomed Roads Open to the Public

The park is now open to oversnow vehicles

Spring Snow Removal Operations and Road Closures

Groomed roads close at 8:00 a.m. on the day listed:

Mammoth to Norris Junction

March 4, 2002

Norris Junction to Madison Junction, and Norris Junction to Canyon

March 6, 2002

All groomed roads close

March 11, 2002

Roads open to the Public

Roads will be opening to the public April 19, 2002– May 10, 2002. Watch this site for details.

YELLOWSTONE RECOGNIZES HAMILTON STORES' LONG TENURE IN THE PARK

As most of you have heard by now, the new contract for general merchandise and food service, formerly held by Hamilton Stores has been awarded to Delaware North Parks Services. Delaware North also operates in Yosemite, Sequoia, Grand Canyon, and Oregon Caves. The new contract will not take effect prior to January, 2003; therefore, Hamilton Stores will continue their operations this summer.

It is truly the end of an era for Yellowstone, the Povah family and their employees, as they have been an integral part of Yellowstone's history. Charles Hamilton began operating in the park in 1915 and his daughter, Eleanor (Ellie) Povah, her late husband Trevor Povah, and their family have continued the Hamilton Stores' tradition for many decades. Just think about it....they have served Yellowstone visitors since 1915.....even before the establishment of the National Park Service in 1916!

Many of you have asked how this change came about. The National Parks Omnibus Management Act of 1998, a bipartisan bill sponsored by Senator Craig Thomas, mandated concessions reform. The Act repealed the Concessions Policies Act of 1965, which provided a preference to existing satisfactory concessioners when a contract was due for renewal. Under the old law, competition was extremely limited. Under the new law, proposals are evaluated and the contract is awarded to the company making the "best offer". In addition to Hamilton Stores and Delaware North, Amfac Parks and Resorts also submitted an offer.

Regulatory selection factors are:

1. The responsiveness of the proposal to the objectives, described in the prospectus, of protecting, conserving, and preserving resources of the park;
2. The responsiveness of the proposal to the objectives, described in the prospectus, of providing necessary and appropriate visitor services at reasonable rates;
3. The experience and related background of the offeror, including the past performance and expertise of the offeror in providing the same or similar visitor services as those to be provided under the concession contract;
4. The financial capability of the offeror to carry out its proposal; and
5. The amount of the proposed minimum franchise fee, and/or other forms of financial consideration to the Director.

The secondary selection factor:

1. The quality of the offeror's proposal to conduct its operations in a manner that furthers the protection, conservation and preservation of the park area and other resources through environmental management programs and activities.

An evaluation panel of accountants, solicitors, and subject-matter experts evaluated proposals and submitted recommendations to the Director. Regional and Park staff were not among the panel members.

Delaware North offered substantially more investment than the prospectus required and developed a very strong environmental management program.

This will be a busy year, preparing for a smooth transition. If you have specific questions about the contracting process, feel free to call the Business Management Office and talk with Edna or Judy (2270 or 2275).

As you are about the park this summer, keep in mind Hamiltons' many years of quality visitor services and their valuable contributions to this community.

Leave Share Program

Julia Sheriden, Computer Specialist for Administrative Division, has had a reoccurrence, due to previous medical condition, that may take several months for recovery.

Susan Kraft, Museum Curator for Center for Resources, underwent two surgeries for cancer and is being treated with chemotherapy. Her recovery after the treatments may take several months.

Holly Long, Budget Analyst for Fleet Maintenance, has had complications with twin pregnancy; may need several months off.

NPS PERSONNEL NEWS

Welcome to Yellowstone:

Janet Ambrose Environmental Education Program Spec.
from Shiloh Nat'l Military Park

Rosemary Zugel Supervisory Visitor Use Assistant
from Harpers Ferry, West Virginia

Permanent Appointments:

Susan Ross Office Assistant
South District Office

Bon Voyage

Jack McDonald Retired from Maintenance
February 9

Welcome back to Yellowstone:

Tom Cawley Visual Information Specialist
from Cuyahoga Valley NRA

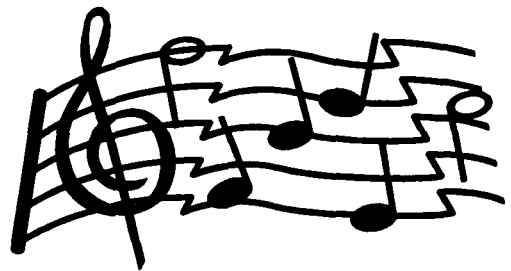
PEER AWARDS

1. Denise Herman
2. Casey Jones
3. Craig VanDePolder
4. John Stewart
5. Mark Foster

Montana Mandolin Society

March 1, 2002

Mammoth Hotel Map Room, 7:00 p.m.



Spend an evening with Bozeman's own – Montana Mandolin Society. Their music evokes images of horse drawn carriages, lamplit parlors, and Sunday picnics. This eight to ten piece mandolin orchestra has performed at the Kennedy Center in Washington, D.C., the Charlotte Martin Theatre in Seattle, Washington, and various historic venues such as Virginia City.

Tickets \$10.00 adults, \$5.00 for students
Brought to you by the Electric Peak Arts Council

SAFETY CORNER

BY WILLIE BURKHARDT

Slips, Trips, and Falls

Speaking in broad terms, there are three ways you can have a fall on your job- and possibly suffer from the fall. You can lose your balance; you can trip over a floor defect or something improperly left or dropped in a walkway; or you can fall from a position in which you are being supported above the floor or ground.

Avoiding Slips

To avoid slips and resulting falls, be on the lookout for foreign substances on the floor. Watch for deposits of water, food, grease, oil, sawdust, soap, or debris. Even small quantities of these substances, sometimes almost too small to see, can be dangerous.

When you come into a room from the outdoors in rainy or snowy weather, wipe your shoes thoroughly on a doormat- not just to keep the floor clean but to prevent wetness off your shoes from making you slip, and perhaps, fall. Another point about walking safely: Don't turn too sharply when changing your direction.

Preventing Trips

Now, let's give our attention to tripping hazards. Some that are all too common are trash or unused material left in aisles or other areas intended for pedestrian traffic, extension cords across paths of travel, tools not put away, and holes or unevenness in the floor.

It will help keep passageways clean if you make sure trash or waste goes in the trash barrel. There are enough waste receptacles here that taking this safety precaution shouldn't take more than a few steps.

Walk where you're supposed to walk. Don't take shortcuts; especially don't take shortcuts through machinery areas. Hold onto the handrails when walking on stairs or traveling on steeper-than-ordinary ramps. If material or equipment is stored on stairways or ramps, move it or report it promptly.

Horseplay-just plain goofing off- can be fraught with danger. It can cause a trip, stumble, or fall by distracting a worker's attention from moving safely.

Foiling the Long Fall

To avoid those long falls that can cripple for a lifetime or even prove fatal, you should pay close attention to the rules of ladder and scaffolding safety. We have videos devoted especially to this equipment.

When you need to climb, use a ladder- the proper length ladder. Don't climb on machinery, stock, crates, chairs, or boxes. Be sure that the ladder is in good condition. When using a straight ladder, keep the distance from the ladder's base to the wall at one-fourth the

SAFETY CORNER (ON'T

distance from the base to its point of support. Make sure the ladder is at least three feet above it's top support. Don't reach too far from a ladder. Keep the center of your body between the ladder rungs. Use a fall protection harness and clip off to some building support member if available and you will be using both hands in your work. Never stand above the third step from the top.

When using scaffolds, check carefully for defects and proper installation. When scaffolding is assembled, the maker's instructions should be accurately followed. The standing and work surfaces should be kept level and clean. Toe boards help prevent tools from falling and lessen the danger of slipping. If possible, work with someone well versed in scaffolding safety.

If your working surface is six feet or more above the ground either a guardrail, or fall protection equipment and a suitable anchor point are required.

Falls are one of the major causes of occupational injuries-including fatal ones. We do our best to prevent situations that can lead to falls-and to provide equipment that will protect you in case of a fall. But you must do your part too, by being aware and careful.

*Reprinted from Business and Legal Reports, Inc.

VIDEO RENTALS

The Yellowstone Employee Winter Recreation Program, in partnership with Your Town Video, is offering a Video Rental Program at Mammoth and Old Faithful to all park employees.

As of December 13, an excellent selection of videos is available for you to rent from either location. TV's and VCR's will also be available to rent.

Mammoth AMFAC Personnel Office located in the Juniper Dorm. Regular Hours are 8:00-5:00, 7 days a week. Call 307-344-5396 for extended hours.

Old Faithful AMFAC Personnel Office located in the Larkspur Dorm. Regular Hours are 8:00-5:00, 7 days a week. Call 307-545-4677 for extended hours.

We look forward to this Video Rental Program being a great service to all park employees. If you have any questions or want information on other services provided by Your Town Video, contact Ross Richardson at 406-848-7223. For information on other Winter Recreation programs, contact Zach Park at 307-344-5224.

FOR SALE

Brand new ladies 13" Schnees Hunter insulated boots, size 8, \$150. Call 848-7962 after 6PM

Ford pickup F-150 1995 XLT 302 V-8 extended cab, short bed 4-wheel drive, manual hubs, color Tucson Bronze/Cream. 89,000 miles excellent condition, excellent running. Tow package, off road package, 5 speed standard, rear window slider, power locks/windows/mirrors, block heater. With Glasstite topper (cream color) with window sliders. Both well cared for. Truck - with topper \$9500; without topper \$9000; topper alone \$500. Call Bundy at 307-344-2602 or 406-838-2300 or email Bundy_Phillips@nps.gov

1991 Mitsubishi Montero. 4 door SUV, blue, 4WD, PW, PDL, AC, Thule roof rack, CD, 150K mostly highway miles (completely rebuilt engine@125K) asking \$4500. Garaged at West. Call Richard at 307-242-2619.

Cross country skis. Karhu XCD-GTs (now called Serpens), used only one season, 195, double camber, full metal edge, waxless, with SNS binding. Great backcountry skis! \$135. Women's boots to fit bindings available in size 8-8 1/2. Call 848-7085 evenings.

Black, combination fluorescent/incandescent extendable artist lamp with table clamp anchor. Provides daylight color compensation. New \$ 65. Sony digital camera, cybershot DSC-S30, 1.4 megapixels with a 6x zoom potential, very compact and lightweight. Software included for Mac or PC photo downloading. \$370 or best offer. Epsom color photo printer, compact model, new \$90. Call 307-344-7931 evenings.

FREE

Stove/oven gold colored. It is old but still works. You haul. Call Jennifer Conrad at 406- 848-2498 if you are interested.

Kenmore full-size washer and dryer. They are old but still work, just not like new. They are yours on February 21st (providing my new ones come in as planned!). Call Ginny at 307-344-2052 or 307-344-9246.

FOR RENT 3 bedroom, 2 bath house on 4 acres on river. House has washer/dryer and detached shop/garage. Located approximately 11 miles north of Gardiner. Rent is \$625 plus utilities. Contact Marcie at 800-676-8189 or 406-222-0304.

HOME FOR SALE We're building soon and need to sell our home. It is located 4.5 miles north of Gardiner on Papesch Road. One acre of land with a 1995 modular home (approximately 1600-sq.ft.) on foundation with vaulted ceiling, 3-bedrooms, 2 baths and, a shed for additional storage. It has trees and a nice lawn with live water in the summer. A great view of Electric Peak! Come check it out, but please call first. 406-848-7016.

ROOMMATE NEEDED

Looking for mature, non-smoking, female roommate to share 2-bedroom, 1-bath house in Gardiner. Huge fenced-in yard so pets may be an option. Either way, you must like animals! Available first part of December. 1/2 rent is \$200/month (includes water) plus 1/2 utilities. Call Diane at 406-848-7054 evenings & weekends, and 406-223-1833, leave a message if no answer.

ANNOUNCEMENTS

YELLOWSTONE HERITAGE AND RESEARCH CENTER

The environmental assessment (EA) for the *Yellowstone Heritage and Research Center* is currently on public review. Comments are due on February 25, 2002. If you would like a copy of the EA, please call Leigh Anne Dunworth at 307-344-2018 or stop by the Planning Office.

REGULAR WORSHIP SERVICE SCHEDULE

Regular Gardiner/Mammoth worship services will be as follows: Sunday worship in the Mammoth School will be held at 9:00 a.m. Gardiner Community Church will have Sunday School at 10:15 a.m. followed by worship service at 11:15 a.m.

MAMMOTH CLINIC WINTER HOURS

The Mammoth Clinic is open 5 days a week. The clinic hours are 8:30 a.m. to 1:00 p.m. and 2:00 p.m. to 5:00 p.m. Monday, Tuesday, Thursday, and Friday and 8:30 a.m. to 1:00 p.m. on Wednesday. To make an appointment, please call the clinic at 307-344-7965.

YELLOWSTONE FEDERAL CREDIT UNION

Yellowstone Federal Credit Union hours are:

9:30 a.m. to 3:00 p.m. Monday, Tuesday, Thursday, and Friday

9:30 a.m. to 5:30 p.m. on Wednesday.

YFCU offers free checking with no minimum balance requirement.

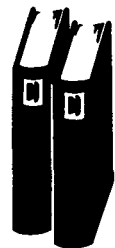
Have your income tax refund deposited directly into your account. The Credit Union routing number is 302387023. Your refund could be deposited within two weeks when you electronically file your taxes. Copies of Federal Tax Forms are also available at the Credit Union.

VETERINARIAN VISIT

Dr. James Murray, DVM, of Livingston, will be in Gardiner on the following Fridays: February 15 & March 1 & 15. Call 406-222-3700 if you would like to schedule a home visit appointment. Thank you!

Discovering the Classics

Ladies, please join us **Wednesday, February 27, 2002 at 7:00 p.m.** at the **Comfort Inn** for coffee, cinnamon rolls, and an evening of relaxation and fun. Debra Telsing from Silvertips Bookstore shares how to rediscover the classics. Our speaker from Darby, Montana, shares her story, and Tara Cross will share her violin melodies. Call 406-848-7526 for questions or to reserve your spot. Hope to see you there!



Evening sponsored by Gardiner/Mammoth Women's After 5

Please Join Us!
6:00-9:00 PM
Thursday, February 21, 2002



Featuring folk tunes by Glenn & Neva Plumb

At the Yellowstone B & B Coffee House, 312 East Main Street, Gardiner



For more information call, 406-848-7000

Come and enjoy music, drinks & sweets.

Hope to see you there! Kerri & Tiff

Yellowstone Association Seeks Director of Member Development

To fill the position left vacant with staff member Craig Elliott's move to Las Vegas, the Yellowstone Association is seeking a Director of Member Development to be responsible for all aspects of the Association's growth-oriented membership program including member recruitment, cultivation, communications, and development. Prior professional experience and training in member/donor development is a key requirement for the job; the starting salary is \$52,500 with benefits. We are looking for someone with the professional skills and knowledge to help us continue to expand our successful membership program as an educational outreach tool and a source of funding for Yellowstone. For a complete job description including application procedures, please see:
www.YellowstoneAssociation.org/aboutus/dirmem/htm

Resumes will be accepted through February 28.

For those wishing to catch up with Craig's career, visit the website for *Earth and Beyond*. *Earth and Beyond* is a new interactive web game under development by Westwood, a division of EA Games. Craig is one of the game's developers and will also serve as a community coordinator following the launch of the game.

YFEA NEWS

Please join us for an **All Employee Taco Lunch** following the All Employee Meeting on February 27th.

There will be an all-you-employees-can-eat taco bar, with beverage and an all employees dessert.

All it will cost you employees is \$3 for members, \$4 for non-members.

All employees can pre-buy tickets the week of the lunch/meeting through Nancy in CSS, Judy in Office Services, Montana in Finance, or Colleen Athas in Supply.



YFEA Membership and Officer Drive



YFEA NEEDS YOU!

It is the time of year again for everyone to renew their membership in YFEA. Current members can expect a renewal notice in the mail. There will also be a membership table at the All Employee Meeting. Otherwise, contact Montana Lindstrom in Finance. Please support your Association!

Also March is Election Month for YFEA. Due to circumstances we tried to avoid but couldn't, all four elected positions will be vacated this year. If you are interested in becoming President, Vice-President, Secretary, or Treasurer of this valuable organization please contact any of the current officers. Listen for more information about this at the February 27th meeting.

The Christmas raffle organized by YFEA members from the Division of Interpretation earned \$500 for the victims of the September 11 tragedy. Below is a copy of the letter we received in thanks for our donations.

The September 11th Fund

A project of The New York Community Trust and United Way



The New York Community Trust



UNITED WAY

December 28, 2001

Ms. Kathy Hoak
P O Box 501
Yelowstn NI Pk, WY 82190-0501

Dear Ms. Kathy Hoak,

Thank you for your gift of \$500.00 to The September 11th Fund. The Fund was established by United Way of New York City and The New York Community Trust to respond to the immediate and longer-term needs of victims, their families, and communities affected by the tragic events of September 11, 2001.

Within 11 days of the attacks, checks were being written to victims and their families by experienced relief agencies using cash grants from The September 11th Fund. Right now, your contribution is helping to provide emergency cash assistance, legal counseling, grief therapy, job training and placement, and other vital services for victims, families and others directly affected. Your gift is helping people and communities rebuild their lives.

On behalf of Joshua Gotbaum, executive director and chief executive officer of The September 11th Fund, we invite you to visit www.september11fund.org for up-to-date information and to sign up for e-mail updates on how your contribution to The September 11th Fund is helping to fund recovery efforts.

Thank you for your continued support of The September 11th Fund and of community foundations and United Ways across the country.

If your employer has a matching gift program for The September 11th Fund and requires verification of your gift, this letter will serve as that verification. Please contact your company's human resources or community affairs department if you have any questions.

Sincerely,

Ralph Dickerson, Jr.

Ralph Dickerson, Jr.
President
United Way of New York City

Federal income tax law requires us to inform you that no goods or services were provided to you in return for your gift. Therefore, your contribution is fully tax-deductible. Please keep this document for tax purposes. Our tax-exempt number is 13-261-7681.

Position Announcement

Summer Naturalist Yellowstone Association Institute Yellowstone National Park, Wyoming

Summary Description:

The Yellowstone Association Institute seeks one or two Naturalists for a summer interpretive hiking program to be offered each week from May 6 through October 1, 2002. The program, entitled *Trails through Yellowstone*, is designed to provide an introduction to the natural and cultural history of Yellowstone and features daily interpretive hikes. The Naturalists will work 40-50 hours per week.

Qualifications:

Required: Extensive interpretive experience, outdoor leadership skills, and a close knowledge of the Yellowstone ecosystem.

Desirable: Wilderness First Responder or Wilderness EMT certification and previous backcountry experience in Yellowstone.

Compensation:

Hourly wage of \$10.50/hour, with overtime paid for hours in excess of 40 per week. Meals provided on workdays. Lodging may be available.

To Apply:

Please send resume, cover letter, and three professional references to:

Jim Williams, Institute Program Manager
Yellowstone Association Institute
Post Office Box 117
Yellowstone National Park, WY 82190

Applications must be received not later than 4:30 p.m. MST on March 4, 2002. A limited number of applicants will be interviewed and the hiring process will be completed by March 15.

Yellowstone Association Membership A Great Value for Local Residents –

20% - 40% discounts on park hotel room rates available to members!

The Yellowstone Association is very appreciative of Amfac's help in our efforts to encourage membership through this special hotel discount program. To check on dates and locations covered by the discount for this winter, spring and fall, visit:

*www.YellowstoneAssociation.org/Membership/index.htm
and click on the link to "Discounts on lodging in Yellowstone."*

To make a reservation, call Amfac at 307-344-7311 and be sure to tell them you're a member.

If you're a local resident but not a member of the Yellowstone Association, you may be missing out on some of the best deals available in Yellowstone.

Treat yourself and your family to a relaxed visit to a hotel in Yellowstone during selected dates and locations during the spring, fall, or winter, and you'll receive a sizeable discount on your hotel room rate if you identify yourself as a member of the Yellowstone Association when you make your reservation and present a valid membership card upon check-in. For example, from May 10 – 31, a room without bath in the Old Faithful Inn (regularly priced at \$69) is offered to Association members for only \$39. If you prefer, stay at the Snow Lodge from May 3 – 31 and enjoy a hi-range room for only \$99 which is normally priced at \$134. Similar discounts are offered to Association members in fall and winter and at locations throughout the park. As family memberships in the Association are available for only \$30, your room discount can easily pay for your Association membership!

In addition to receiving hotel discounts and a quarterly newsletter, members also receive a 15% discount on purchases of educational materials in Association sales areas in all park visitor centers or through *The Park Store* (the Association's online shopping center for Yellowstone books, maps, videos, and games at www.YellowstoneAssociation.org), discounts on Yellowstone Association Institute field school programs, and invitations to special "members' only" classes at the Institute. (If you're a park employee, you may be entitled to a 50% discount on Institute classes if the class isn't full thirty days in advance; call Andy Strattman, our Registrar, at 307-344-2294 for details!)

Want to join?

**Join online at: www.YellowstoneAssociation.org/membership/memorder.htm
or at a park visitor center, or call us at 307-344-2289!**

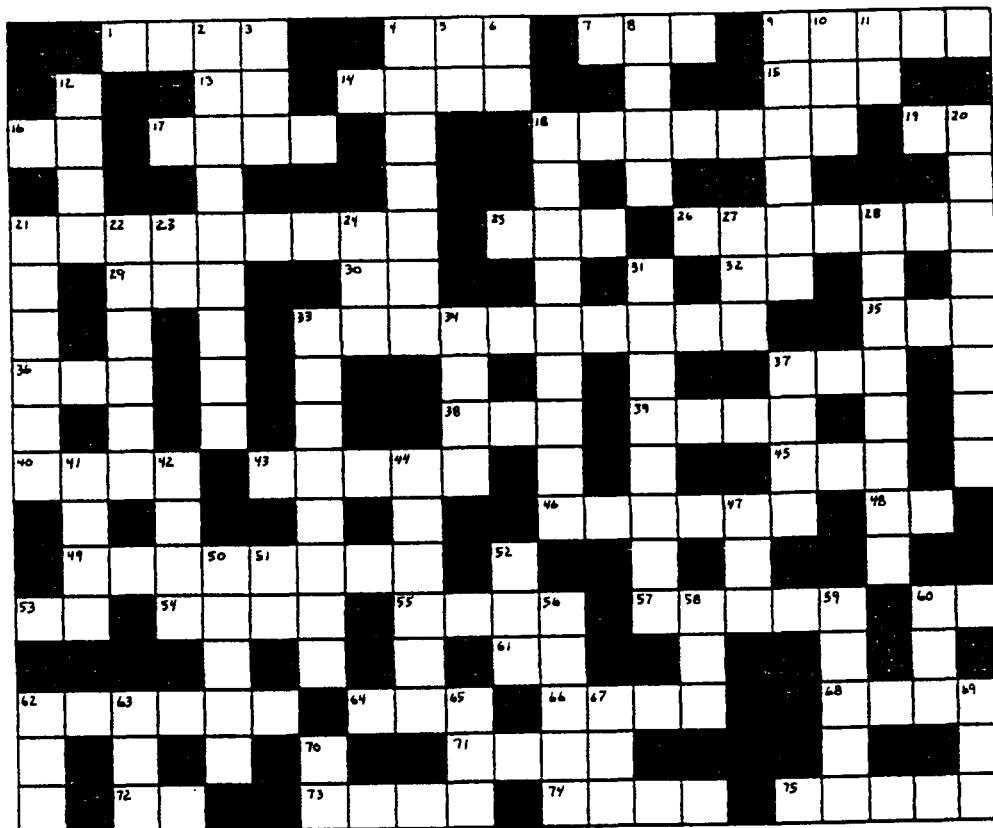
Can't find your membership card? Call Association staff member Anne Mitchell at 307-344-2289; she'll be happy to issue you a new one.

ACROSS

- 1: Early influential Senator
- 4: Cooke of NPRR
- 7: Yellowstone's country
- 9: 1st main entrance to the Park
- 13: Park area that added lands after 1900
- 14: 'Sagebrushers' would do this at nite
- 15: It would have been needed for the Anna
- 16: Chem. used to extract gold from ore
- 17: Was mined on McMinn bench
- 18: Set up small resort at Hot Pots 1870's
- 19: Calfee, early photog. from Boze.
- 21: Current stores that began with Klamers
- 25: Small canyon on road to Cooke City
- 26: Early explorer, trapper & "liar"
- 29: 1st dude ranch in country-No. of Park
- 30: State S.E. of Wy.
- 32: Topping (init)
- 33: Early sobriquet for Yellowstone
- 35: Colter once did this "...for his life"
- 36: Co. NPRR subsid. financed hotels
- 37: Explorers camped near this "Volcano"
- 38: Men from this count'y trap. in Rocky Mts
- 39: Hotel in Cody opened in 1902
- 40: Had camping company w/Powell
- 43: Nickname for hotel at O.F. 1885-94
- 45: Miners in area would do this for gold
- 46: Hotel in Pleasant Valley
- 48: Howell-famous poacher in 1890's
- 49: Explorer of Park in 1870
- 53: Silver Gate's entrance
- 54: Partner of McCartney at MHS in 1870's
- 55: Earliest Park hotel co.
- 57: Protective Act passed in 1894
- 60: State E. of Wy.
- 61: West young man"
- 62: Official Park Photographer"
- 64: Hotel built in 1903-04
- 66: Union Pacific RR at this entrance 1907
- 68: Uncle Trail
- 71: Written inspiration made about Park
- 72: Mined at Jardine & Cooke City
- 73: Norwegian Snowshoes
- 74: Early finan. backer of hotels
- 75: Famed Yellowstone artist

DOWN

- 2: Opened for winter season 1971-72
- 3: Comp. that took over from Y.P. Co.
- 4: Photographer with Hayden in 1871
- 5: Good time to see wildlife
- 6: Co.
- 8: Plant found in Northern area of Park
- 9: Early Supt. and road builder
- 10: This hardwood 'not' found in YNP
- 11: Arrived in Cinnabar in 1883
- 12: 1st boat on Yellow. Lake-Hayden Exped.
- 18: Opened 1st crude hotel in Park in 1871
- 20: Built 1st bridge over Yellowstone R.
- 21: Wrote 2-Vol. history of Park
- 22: & Yellowstone Stage Co.
- 23: Preposition
- 24: Type of Cavalry officer



- 27: Swisher had saloon nr Pebble Cr.
- 28: 1st Park entrance town
- 31: Original name of MHS hotel
- 33: Mtn peak named after this explorer
- 34: "Beaver" Leigh
- 37: Early explorers needed them to find way
- 41: Gen. Alfred Terry, Custer's commander
- 42: Done by early visitors in hot springs
- 44: Hotel whose perimeter was one mile
- 47: Hotel co. formed in 1936
- 50: "Uncle Billy"
- 51: Had control of NW Fur Co. (country)
- 52: Miners did this to find gold
- 56: George - wounded by Nez Perce
- 58: Jackson's work considered this
- 59: Early transp. co.
- 60: Toy laundry
- 62: Was grown in fields near Arch
- 63: Hotel company in late 1800's
- 65: Replaced U.S. Army control in 1918
- 67: "Savages" were these (abbr)
- 69: The Honorable Vest
- 70: Wildlife pens were kept on this "Dot"

RGOSS
2/99

Open House For Superintendents Suzanne Lewis & Steve Martin



You are cordially invited to attend an open house to welcome Suzanne Lewis, Yellowstone National Park's new superintendent, and Steve Martin, new superintendent for Grand Teton National Park on Wednesday, February 27, 2002, at the Mammoth Hotel Map Room in Yellowstone National Park.

2:00 - 4:00 p.m. Open House with refreshments

This is an opportunity for you to meet and welcome Superintendent Lewis and her husband, Michael Hurrell and Superintendent Martin and his wife, Dr. Cyd Martin to the local and regional community.

For more information, please call (307) 344-2003.

YELLOWSTONE FEDERAL CREDIT UNION CELEBRATES 65 YEARS OF FINANCIAL SERVICE

On December 7, 1937, Yellowstone Federal Credit Union was granted a charter to operate under the Federal Credit Union Act of 1934, "to make more available to people of small means credit for provident purposes through a national system of cooperative credit."

Nine people subscribed to a \$5.00 share to form the nucleus of the credit union, and signed up 61 additional members on the credit union's charter. The first Board of Directors included T. Paul Wilcox, Claude H. Moore, Fred G. Bussey, John W. Jay and Edmund B. Rogers. The original field of membership was limited to permanent federal employees, their families and organizations permanently located in Yellowstone and Grand Teton National Parks, including the "National Park Service, Weather Bureau, Department of Justice, and Post Office Department." The credit union was open two days per month, with its office located in the Canteen Building, just down the hall from the present office.

For the next 35 years, the credit union remained fairly small, with fewer than 100 members and assets of \$50,000 to \$100,000.00. In 1972, the field of membership was expanded to its current area, including all residents of Yellowstone National Park, Gardiner, Jardine and Paradise Valley north to Point of Rocks. Since that time, the credit union has grown steadily, serving over 1400 members and for the first time, reaching \$3 million in assets in 2001.

Originally, services were limited to basic savings accounts and small personal loans of \$500 or less. Thanks to regulatory changes over the years, we can now offer a wide variety of financial services, from savings accounts, IRA's, free checking accounts, and VISA Checkcards in 2001 to consumer loans, mortgage loans, and guaranteed student loans, a new service in 2002. Advances in technology, particularly the personal computer and the Internet, have made even more striking changes in our operations. A routine operation such as paying dividends, which can now be done in 5 minutes, was only done once a year until 1973, necessitating closing the office for a week while the Treasurer manually calculated and hand posted dividends to each member's account.

We would like to take this opportunity to thank all our members for helping us reach this important milestone, particularly those members who have served as volunteers on the Board of Directors, Credit and Supervisory Committees. We look forward to welcoming new residents and businesses as members of the credit union, and to providing a wide variety of financial services to our community for many years to come.

16th Annual Jardine Ski Run!

Feb 24th

**Sponsored by
BEAR CREEK COUNCIL**

Date: Feb 24, 2002

Time: 1:00 PM

Register from 12 to 12:50

Adult & Kids Races

• \$6.00 Adult Donation

• \$1.00 for Kids (12 & Under)

- Watch for the signs from Jardine
- Car Pool - Park at the Pine Creek area
- Prepared track (~ 5 Miles)
- Creative Dress Encouraged for the
P. Russell Brown STYLE AWARD

Prizes

Raffle prizes
donated by
area
merchants

FOOD

Chili
Hot Dogs
Baked Goods

Fun!

A GREAT way
to spend a
Sunday
afternoon

**an official Bear Creek Council
FUNraiser!**

For more information call 848-2380



HEMINGWAY FAMILY THANK YOU

To our Yellowstone family,

As many of you know, Mark Hemingway from Grant Village was diagnosed with cancer on July 11, 2001. It has been an interesting six months, but I am happy to report that Mark appears to be doing very well.

Mark completed his chemotherapy in November and his oncologist in Salt Lake City and the radiologist in San Antonio felt that Mark responded well to the treatments. Of course he will be closely monitored for any recurrence. Every doctor we talked to says Mark did remarkably well, staying on schedule and experiencing minimal side effects. We know this was an answer to many prayers said on our behalf. Mark is rejoicing that treatments are over and now he will have the opportunity to focus on recuperation.

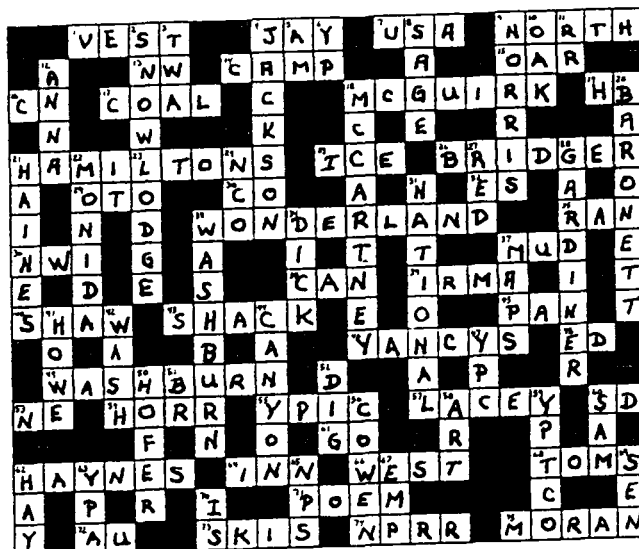
Thanks again for all of your support.

The Hemingway Family

**Yellowstone Crossword Puzzle
compliments of Amfac's
Assistant Maintenance Manager
Bob Goss.**

Thanks Bob!

No Peaking Puzzlers!



February 2002

Gardiner Public School Calendar

SUNDAY

MONDAY

TUESDAY

WEDNESDAY

THURSDAY

FRIDAY

SATURDAY

					1 SKIP 3RD HOUR 5:00pm H.S. Girls VB w/WSS (B & A) - HOME 5:00pm 6:00 & 7:30 H.S. BBB @ Big Timber, Lv:2:00, Rt:12:3	2 9:00am Jr.Hi VB @ Big Timber, Lv:6:30am, Rt:4:00pm 2:00pm H.S. Girls VB w/Lima - HOME 3:30pm, 4:30 & 6:00 H.S. BBB w/ Sheridan - HOME
3	4	5	6	7 4:00pm H.S. Girls VB @ Shields (C, B,A) in Wilsall	8 4:00pm H.S. Girls VB @ West 4:30pm 6:00 & 7:30 H.S. BBB w/ White Sulpher Springs-HOME	9 Jr.Hi VB @ Bozeman 2:00pm & 3:30 Jr.Hi BBB @ Harrison 4:00pm H.S. Girls VB w/Sheridan (C,B,A) - HOME 4:30pm 6:00 & 7:30 H.S. BBB @ Harrison
10	11 Jr.Hi & H.S. Ski & Swim/Bowl Day	12 <i>Lincoln's Birthday</i>	13 7:00pm School Board Meeting	14 <i>Valentine's Day</i> 4:15pm H.S. Girls VB @ Three Forks (C,B,A)	15 MID 3RD QUARTER 4:00pm H.S. Girls VB w/MCHS (C, B,A) - HOME 5:00pm 6:00 & 7:30 H.S. BBB @ West	16 Jr.Hi VB @ Livingston 11:00am H.S. Girls VB w/Ennis (C,B,A) - HOME 6:00pm & 7:30 H.S. BBB w/Bridger - HOME
17	18 PRESIDENT'S DAY (NO SCHOOL) <i>President's Day</i>	19	20	21	22 <i>Washington's Birthday</i>	23 Jr.Hi VB - HOME
24	25	26	27	28 H.S. BBB Divisionals @ Hamilton - TBA H.S. Girls VB District @ MCHS - TBA		

S	M	T	W	T	F	S
		1	2	3	4	5
6	7	8	9	10	11	12
13	14	15	16	17	18	19
20	21	22	23	24	25	26
27	28	29	30	31		

S	M	T	W	T	F	S
					1	2
3	4	5	6	7	8	9
10	11	12	13	14	15	16
17	18	19	20	21	22	23
24	25	26	27	28	29	30
31						

February News

February 1, 2002

School News

Ski/Skate Program: Thanks to all of the parents who helped make this a successful program. Tying on ice skates and skiing with the kids really makes these days fun and successful. Appreciation also goes to Mary Hudson (skating) and to Wendy Brown and Sue Consolo-Murphy (skiing) for the well-done efforts of organizing all of these activities. (Thanks, Nancy, for the help.) Thank you to all of you!

The ice-skating committee has done a great job of maintaining our ice-rink. Many hours of hard work have kept it in great condition. **Thanks!**

Lost & Found Grows Exponentially ! If you or your child are missing any items of clothing, there is a good chance we have it here. At the rate we are accumulating lost articles, we will need an additional room for storage by May of this year! Please take a moment over the next few days to stop by the school and peruse this treasure

box of lost articles, located to the left of the front doors.

Starlab Planetarium: The week of Feb 4th, our school will host the Starlab Planetarium. This inflatable planetarium will accommodate an entire class and help us learn about our magnificent night skies during daylight hours. Everyone is welcome to join us for a family night of stargazing on Wednesday, Feb 6th, at 7 PM. Local astronomers will set up their telescopes and guide us in viewing some amazing stellar sights! If you enjoy gazing at our night skies, this is an evening you and your family won't want to miss. If the night sky is cloudy, we will move family night to the next day, Feb 7th.

Hundreds Day will be celebrated on Feb. 4th as the One Hundredth Day of school.. Primary students will be enjoying activities centered around the concept of 100.

Classroom Notes

Ms. Marty's Class: The month of February is brought to you by the letters Ff, Rr, Pp, and Ll! Kindergartners will be working with those letters over the next few weeks. *Penguins, penguins! You think you'll be seeing them if you look in on the first graders on "Black and White" day. This celebration will be the culmination of our penguin unit. Look for more information to come your way.

Mr. Stringfield's Class: In addition to constellations and planets, first and second graders will continue studying snow & ice. Thank you for saving disposable containers to serve as molds for our ice castle. *Also, we will begin storytelling during our show 'n' tell times. Second and third graders will spend the next few weeks immersed in reading and writing fairy tales! This is a perfect time to tell or read your favorite fairy tales with your child.

Mrs. Kisthart: In Math, the fourth graders are finishing up the chapter on multiplying by 2-digit numbers. Before moving on to measurement in the next chapter, we're going to take some extra time to practice multiplication facts

through 12 and multiplying 2-digit factors. *Third graders are finishing up the chapter on telling time, collecting data, and reading graphs. They'll be starting the Understanding Multiplication chapter next week, so begin drilling them at home on their times tables. *In Social Studies, the third graders have been learning about different Native American tribes and the different cultural areas of the Native Americans in North America. Stop by to see the totem poles they made depicting life as a 3rd grader in Mrs. K's class. *The fourth graders have finished touring the New England and Middle Atlantic Regions, and now find themselves in the South East Region. *In Science, we're continuing to uncover some of the most amazing science secrets on earth!

Mrs. Young's Music: Feb. 8th is the fourth grade annual trip to the Symphony! This year the theme is "American Heroes," and it promises to be an exciting day! *During band today we held the Band Olympics. Ask your fifth or sixth grader about these activities. *First and second graders have been writing their own music using a staff, notes, and do, mi, and so steps of the scale.

February 2002

Sun	Mon	Tue	Wed	Thu	Fri	Sat
					1 last day of ice skating lessons	2
3	4	5 library 1-6	6 Evening stargazing 7:00 p.m.	7 library K	8 Fourth grade Symphony field trip	9
Starlab Planetarium						
10	11	12 library 1,2,5,6 Canyon Trip 3,4 School Board Mtg. 4:15 p.m.	13	14 library K Valentine's Day	15 No school President's Day Celebration	16
17	18 No school President's Day Celebration	19 library 1-6	20	21 library K	22	23
24	25	26 library 1-6	27	28 library K		

Schedule of Events

- **February 4-8**— Starlab Planetarium will be here at the school. Students will be able to use the planetarium daily with their teachers to learn about astronomy, hear stories about the constellations, and practice finding stars.
- **February 6**— The community is invited to spend some time in the planetarium with David Stringfield, experiencing the same programs that the students have enjoyed through the week. The evening will begin at 7:00. Also, 4 local astronomers will be outside with their telescopes to show us the planets, stars, nebulae, and other features up-close and personal! In case of cloudy skies, this activity will be moved to February 7.
- **February 8**— Fourth graders will travel to Bozeman for a special performance of the Bozeman Symphony. We will leave at 8:15 a.m.. The outing will also include a presentation of guitars and drums at the *Music Villa*, a pipe organ demonstration with Mr. Tim Bell at Holy Rosary Catholic Church, and a tour of the *Pioneer Museum* on Main St.
- **February 12**— Third and fourth graders will be traveling in an AmFac over-the-snow van to the Canyon area for a chance to experience the Park interior in the winter.
- **February 14**— Valentine's Day
- **February 15, 19**— School will not be in session these two days for the Presidents' Day holiday.