



THE YELLOWSTONE NEWS

OCTOBER 15, 2001

NEXT DEADLINE: NOVEMBER 9



Deny Galvin, NPS Deputy Director, Tim Hudson, & P. Lynn Scarlett, Assistant Secretary for Policy Management & Budget

Environmental Achievement Award Presented to Yellowstone National Park!

Our own Tim Hudson recently traveled to Washington, DC, to accept, on behalf of all Yellowstone employees, the Department of the Interior Environmental Achievement Award for 2001.

This Departmental award recognizes DOI bureaus, offices, employees, and contractors for their exceptional achievements or contributions in a broad range of environmental discipline areas, including: pollution prevention, recycling, sustainable design, environmentally preferable purchasing, facility environmental excellence, environmental stewardship, auditing and environmental management, and education and outreach.

The employees of Yellowstone National Park were selected because of their many, diverse, and outstanding efforts to integrate environmentally sustainable approaches into the conduct of mission-related activities. Particularly noteworthy is the manner in which they have engaged the local community to participate as equal partners in these efforts, which have in-

cluded the establishment of a regional recycling program and composting facility, the use of alternative fueled vehicles (including a rigorous pilot test of bio-based fuel for trucks and snowmobiles), the use of renewable solar energy systems, and conversion to the use of environmentally preferable cleaning products.

Halloween Safety Tips

From the Los Angeles Fire Department

- Plan bright reflective costumes or add reflective tape to costumes.
- Use makeup and hats instead of masks and make sure all parts of costume are flame resistant.
- Make sure flashlights have fresh batteries; also it's a good time to buy fresh batteries for your smoke alarms.
- Teach children how to dial 911, review with children the Stop, Drop and Roll principle and learn or review CPR.
- Make an extra effort to remove tripping hazards on your porch and walkway.
- Consider purchasing individually packaged healthy food alternatives for those who visit your home.

ROAD CLOSURE REMINDERS

Madison Junction to Norris Junction

August 27 - November 5 - closed 24 hours/day.

Winter Closures

The only park road that remains open to wheeled vehicles through the winter is the road from Gardiner, Montana, at the North Entrance to Silver Gate & Cooke City, Montana, near the Northeast Entrance.

Other roads close at 8:00 a.m. on the following schedule:

October 9, 2001

Tower to Canyon via Dunraven Pass and Beartooth Pass (Highway 212 - outside the Northeast Entrance to the park)

November 5, 2001

All park roads close except the North Entrance road to Silver Gate & Cooke City, Montana. Snow tires and/or chains may be required. Please note that in winter US Highway 212 is **CLOSED** just east of Cooke City, Montana. It is open to east and west travel in spring, summer and fall.

Open Season for Federal Employees Health Benefit Plan

The open season for FEHBP will be November 12 through December 10, 2001. Please be aware that there will be substantial increases in premiums with many plans this year. All NPS employees are encouraged to use the FEHBP website at

www.opm.gov/insure/health to review open season information and to select the health plan that best meets your needs. Health benefit plans will be available on this website in November, 2001. Changes to your health benefit plans will be effective January 1, 2001.

Research Presentation by Amanda Hardy

If you have an interest in wildlife research in YNP, you'll want to join us as Amanda Hardy presents a summary of her thesis: *Elk and Bison Response to Recreation in Yellowstone National Park*. Her research took place between Norris, Old Faithful, and West Yellowstone, and includes information on distribution, behavior, and stress hormone levels, among other things.

Mark you calendars for Wednesday, October 17, from 9-10 a.m. in the Garage Conference Room in Mammoth

Thank You!

I'd like to thank all of my Yellowstone friends for your thoughtfulness and caring on the recent death of my mother from breast cancer. Your cards, phone calls, and flowers meant more than you know to both me and my family. Mom died 4 hours after turning 88; all of us kids and dad had the opportunity to say "Happy Birthday" and "Good-bye." She died at home. She was lovely.

Jean Nuetzel

Obituaries

Inez Warwood died peacefully after a short illness on June 28, 2001. She was married to Lester Warwood for 56 years. They lived and worked at Lake the summers of 1973-1992. Inez worked for several summers selling books at the Fishing Bridge VC and Lester was the maintenance boat operator. The new maintenance boat acquired just before Lester retired was christened the "Warwood".

Lester welcomes visitors. His address and telephone number are: 14326 Rocky Mountain Road; Belgrade, MT 59714, (406) 388-6317.

To Friends of Dorothy Bishop: **Lucille Sims**, mother of Dorothy Bishop, passed away quietly in the night on 10/9/01. She was 92 years old and was living at Meadowbrook Nursing Home in Atlanta, Georgia. Cards and remembrances can be sent to Dorothy at 4898 Itana Circle, Bozeman, MT 59715.

The Yellowstone News is a National Park Service employee newsletter, published monthly by the Public Affairs Office. To submit articles, notices of events, classified ads, or announcements please email Yell_public_affairs@nps.gov, call 344-2013, or send via interdepartmental mail or fax to 344-2014. Please include your name and phone number with all submissions.

Consumer Protection Warning!
Direct Marketing Donation Request Scams for Fake Charities

Montana Consumer Protection Office would like to warn citizens about two malevolent schemes that have arisen in the wake of the attacks on the World Trade Center and the Pentagon.

Con artists, posing as bank and credit union employees, are calling individuals and attempting to gain banking information. The con artists claim that the destruction of the World Trade Center destroyed the customer's account information. They then request the customer's bank account number and password. You should not give out this information. If anyone attempts this scam on you, call the Montana Consumer Protection office in the Department of Administration at (406) 444-4500.

Many con artists are taking advantage of people's willingness to give. They are calling, faxing, and writing people asking them to donate to nonexistent charities. Some of these con artists use the good name of legitimate charities to further their own ends.

The Direct Marketing Association has asked its members that engage in charitable fundraising to people and businesses with whom they do not have a previously existing customer relationship to cease outbound telemarketing fundraising through the end of September. Some charities are not members of the Direct Marketing Association. Please take extra care when giving.

President Bush has established a website, www.libertyunites.org, listing contact information for many of the legitimate charities. Those who wish to donate money should contact a charity of their choosing. They should be leery of anyone contacting them by phone, letter, fax, or email and asking them to donate. Anyone with questions about charitable solicitation may contact the Office of Consumer Protection at (406) 444-4500.

WHO ARE THOSE GUYS????

Two new faces are being seen around the park. Last week, Richard (Ross) and Connie Fitzgerald just picked up and moved from Kirkwood, Missouri, to Jardine. Now that the last child has reached college age, Ross and Connie were free to follow their dream of living and working in the Yellowstone area. Neither has a job yet, but they are looking hard!

As a teenager, Ross worked summers for the old YP Company. He owned his own business for years and reared three daughters. He then completed a degree in Business Administration while still working full time. Connie developed her love of the west living in Colorado for a number of years. She, too, raised a daughter, while working as the Administrative Assistant for the head of the Psychology department with St. Louis University. Connie attended night school and also earned scholastic honors while completing her degree in psychology.

When you see these two dedicated folks around, welcome them to the park and the valley. By the way, if you know where they can buy firewood, give them a call at 848-9146.

ANNOUNCEMENTS

AMERICAN RED CROSS BLOOD DRAW

The American Red Cross Blood Mobile will be at the Gardiner Public School Multi-Use room on Friday, October 19, 2001, from 2:00 p.m. to 6:00 p.m. Blood is desperately needed to help out those in New York and Washington D.C. If you wish to help in any way, contact Millie Thornton at (406) 848-2419 or Kelly Vroman at (406) 848-7271. If you can not donate blood, baked goods are always welcome.

GSA CONCESSION SALE – SPONSORED BY YFEA

It's déjà vu all over again! We are still in need of help for the GSA Concession Sale that will now take place on November 1. We will be working IN the Canteen Gym, so don't let the weather hold you back. If you could help with either some of your time or baked goods or both, it would be much appreciated. And you'll have fun too!

Please let us know what you'd be willing to do and when you can do it. Call Judy Jensen at 2031 or Nancy Tyson at 2064, or email one of us. Thanks!

PARK WORSHIP SERVICES

Gardiner/Mammoth worship services have begun their winter schedule. Sunday worship in the Mammoth Chapel will be held at 9:00 a.m. Gardiner Community Church will have Sunday School at 10:15 a.m. followed by worship service at 11:15 a.m.

BALLET LESSONS AT MAMMOTH

Ballet lessons for ages 6-18 will be held Fridays at the Recreation Hall at Mammoth Hot Springs, and most children will be eligible for *The Nutcracker* held at the Livingston Civic Center December 15 and 16. The fall schedule is as follows: Ballet I, ages 6-8, at 3:15 p.m.; Ballet II, ages 8-10, at 4:10 p.m.; Ballet III, ages 11-18, at 5:05 p.m. A kinder dance class may be added at 2:45 p.m. for 3-5 year olds if there is enough interest. Phone Yellowstone Ballet at 222-0430 for more information

MAMMOTH CLINIC WINTER HOURS

The Mammoth Clinic is now open 5 days a week. The clinic hours are 8:30 a.m. to 1:00 p.m. and 2:00 p.m. to 5:00 p.m. Monday, Tuesday, Thursday, and Friday and 8:30 a.m. to 1:00 p.m. on Wednesday. To make an appointment, please call the clinic at 344-7965.

YELLOWSTONE FEDERAL CREDIT UNION

Effective October 1, 2001, Yellowstone Federal Credit Union hours will be:

9:30 a.m. to 3:00 p.m. Monday, Tuesday, Thursday, and Friday

9:30 a.m. to 5:30 p.m. on Wednesday.

YFCU offers free checking with no minimum balance requirement.

Members should watch their September statement for information on YFCU's new VISA ATM/Check card.

YELLOWSTONE FEDERAL CREDIT UNION also has a special checks program that will aid victims in the aftermath of the tragic terrorist attacks in New York, Washington DC, and Pennsylvania. When members order either the FLAG or FIREFIGHTERS check series from the credit union, the purchase will trigger a \$5.00 donation to support programs designed to help affected areas recover from

the September attacks. This program will remain in effect for the remainder of 2001. For more information, contact Martha Powell at (307) 344-7974 or stop by the Credit Union office.

YELLOWSTONE GALLERY RAFFLE

We are all patriots. You can do many positive things to demonstrate your love for this country. Fly our flag. Pray for the safety of ALL of our citizens and the men and women in service to this nation and our allies. You can also buy a raffle ticket at the Yellowstone Gallery for a framed print by Morten Solberg entitled "Winged Victory". This artwork portrays a Great American Bald Eagle, our symbol for strength and courage. **All proceeds from this raffle will be sent to the Twin Towers Fund.** Mayor Rudolph W. Giuliani has established this fund to ensure that the generous outpouring of support for the families of our uniformed service heroes affected by the disaster is well-coordinated, responsible and accounted for. The purpose of the Twin Towers Fund is to assist the families of the members of the uniformed services such as the NYC Fire Department, the NYC Police Department, and other emergency workers who gave their lives in the rescue effort at the World Trade Center. These brave, unselfish men and women left behind husbands, wives, and children who deserve our support. Give generously by supporting this raffle or if you would like to contribute directly to the Fund, an account has been set up at the First Interstate Bank in Gardiner.

VETERINARIAN VISIT

Dr. James Murray, DVM, of Livingston, will be in Gardiner on the following Fridays: October 19, November 2 & 16. Thank you!



THE TWINS ARE ABOUT TO ARRIVE!!

Please come to a baby shower for Holly Long. The event will take place on November 1 at 7:00 p.m. at 7 Solar Mountain Road, in Gardiner (Perius house). Dessert will be served. Holly has started setting up the nurseries, but has a ways to go yet. If you would like to go in on a group gift or if you need gift ideas, please call Joy at x2209 or at home at 848-7281. See you there!

STATUS OF CONCESSION CONTRACTS

Hamilton Stores, Inc.

A prospectus for this contract was published last October. Because of delays as a result of litigation, proposals were not accepted until mid July. Proposals were received from Hamilton Stores, Amfac Parks and Resorts, and Delaware North.

An evaluation panel, largely comprised of lawyers and accountants, reviewed the proposals in late August. Regulations require that evaluation panels prepare a written analysis and comparison of each proposal to determine which was the best proposal. It is then their job to recommend, to the Regional Director and Director of the NPS, who should have the new contract.

As of this date, management has made no selection. Regardless of the outcome, Hamilton Stores will be operating in Yellowstone, under the terms of the expiring contract, through 2002. That will give time for arbitration of value of possessory (compensable) interest in the buildings. This value is important for two reasons: 1) a new concessionaire would be required to compensate Hamilton Stores for the buildings; and 2) if Hamilton Stores is awarded the new contract, the value of possessory interest becomes the starting point for calculating and tracking leasehold surrender interest under the provisions of the new concessions reform law. Leasehold surrender interest fluctuates according to work done on the facilities and also appreciates annually with CPI.

Yellowstone Park Service Stations

YPSS is managed by a joint venture agreement, not a concession contract. Hamilton Stores owns 50% of the real property and the government owns the other 50%. This was a result of the buyout of the YP Company in the late 1970's. YPSS can hardly be separated from the Hamilton Stores contract because of this ownership of facilities. Therefore, as the future of Hamilton Stores becomes clear, it is our intent to acquire their possessory interest and issue a prospectus for a separate contract for auto services. This should be accomplished prior to the end of 2002.

AmFac Parks and Resorts

The Amfac contract expires October 31, 2001. We have requested a 3-year extension of this contract to give us more time to develop the asset management and work management systems that will be essential to that contract. We have Congressional support for the extension and the Regional Director is also fully supportive. We expect the extension to be approved any day now.

Yellowstone Park Medical Services

The YPMS contract expires October 31, 2002. We plan to issue a prospectus for this contract early next summer. Four medical groups have already expressed interest in this contract.

Winter Operations

Existing snowmobile and snowcoach contracts have been extended for another year. These will most likely remain on extensions until the supplement environmental impact statement is complete.

We have, however, invited proposals for additional snowcoach operations. If sufficient interest exists, we will issue commercial use authorizations (CUA) for this service. A CUA is for a term not to exceed 2-years; cannot be sold or transferred; has no rights to renewal; and all business activities must take place outside the park. Operating requirements and fees would be the same as other snowcoach contract requirements.

Horse and Pack Operations

A prospectus for new contracts for this service has been drafted and will be published sometime this winter. We want these to come out after outfitters have completed their busy seasons.

Other

If you have questions about any contract or concessions management in general, feel free to call or drop by the Business Management Office.

Catch our Spirit on International Credit Union Day!

For 53 years, credit unions have set aside the third Thursday in October to celebrate International Credit Union Day. Each year, it gives us an opportunity to remember our proud history as we promote understanding and support for the credit union difference.

The idea for credit unions was based on the simple principle that ordinary people could pool their money and make loans to each other. Credit unions are financial cooperatives, owned by the people who save and borrow there. Once you deposit money in a credit union, you become a member. Credit unions serve groups that share something in common, such as where they work or live.

Every member is an owner with an equal vote in the election of the credit union's volunteer board of directors. Credit unions return earnings to their members in the form of lower rates on loans, higher dividends on savings, and fewer and lower service fees. Our credit union has expanded its services to include checking accounts, debit cards, IRA's, mortgages, and student loans.

As with other financial institutions, credit unions are regulated by state and federal agencies. The funds credit union members deposit are insured by the National Credit Union Administration to \$100,000.00.

In honor of International Credit Union Day on Thursday, October 18th, YELLOWSTONE FEDERAL CREDIT UNION will hold an open house from 12:00-3:00 PM. Join us for refreshments and find out more about our newest service, the VISA Check Card. We look forward to seeing you!

PEER AWARD RECIPIENTS

Time-Off Awards

Christine Smith
Jen Shoemaker

Peer Awards.

Bill Neumeister
Steve Cleland
George Sechrist

Monetary Award

Ivan Kowski for his excellent work in completing two special projects.

PERSONNEL NEWS

TERM APPOINTMENTS

Chad Jacobson Cartographic Technician
EOD 9/23 YCR

Patrick Flaherty Cartographic Technician
EOD 9/23 YCR

PERMANENT APPOINTMENTS

Scott Hancock Utility Systems Operator
EOD 10/21 Old Faithful

Eric Miller Supervisory Fire Effects Specialist
EOD October

WELCOME TO YELLOWSTONE

Cynthia Casalina Industrial Hygienist
EOD changed to 10/31 From Italy

Brian Smith Supervisory Criminal Investigator
EOD 9/23

TEMPORARY APPOINTMENT

Linda Miller Planning Office

RESIGNATIONS

Ellen Petrick-Underwood Resignation 9/30

GOODBYES

Chris Hansen ALASKA!

Cody Waggener Bents Old Fort

FOR SALE

VW Bus, 1971 - Selling for parts, mileage 76,450. \$300.00 OBO. Four rims & tires. Rims fit 1985 Nissan 4x4 truck, six-bolt pattern. Tires in good shape: Uniroyal Laredo S/R31x10.50 R15LT. \$200.00 OBO. Call Matthew at (307) 344-8532.

Four 14" mounted studded snow tires on 5 holes and Ford minivan wheels plus two mud and snow tires. \$150. Call Rick at (307) 543-9116.

Metal pet barricade/divider designed for minivans. New condition. \$65. Call Rick or Julie at (307) 543-9116.

Snowmobile, 1990 Polaris 400 SKS liquid cooled, red color. Runs well, 5900 miles. Jetted/clutched for high elevation. \$800. Call Bundy at (406) 838-2300 or (307) 344-2602.

1986, F150 4x4 truck, has topper, 250,000 miles and runs great, many items replaced, very clean, \$2000. Call Craig at (406) 646-7696 (West Yellowstone).

Campbell tire chains. Fits tire sizes: P165-175/70R13 or P155-175/70R14 or P145-155/70R15. Brand new-never been used. With case. \$50. Pickup truck bed mat. Rubber. Fits 8 foot bed. Can be cut to fit 6 foot bed. \$40. Space Saver spare tire 13 inch, \$10. Scissor jack for small car, \$5. Call Curt at (307) 545-9110.

Fresh local honey. Get it while supplies last. Call Jeff Gerth at (406) 848-7851 in the evenings.

Lost & Found

Found: Orange and white tom cat, just north of Corwin Springs, about 2 weeks ago. It's a very friendly cat that meows a lot. Leave a message for Chris at (406) 848-7585 if he's yours or if you would like a nice cat.

HOUSESITTER WANTED!

Seeking a housesitter from Saturday, Oct 27 through Sunday Nov 4, to care for 1 cat. House is 4 miles from Gardiner on Stephens Creek Rd (Old Yellowstone Trail). It has satellite TV, a washer/dryer, and great views of Electric Peak! If you are interested in even part of the available dates, please contact Pam Novitzky in the Planning Office, (307) 344-2024 or home (406) 848-2599.

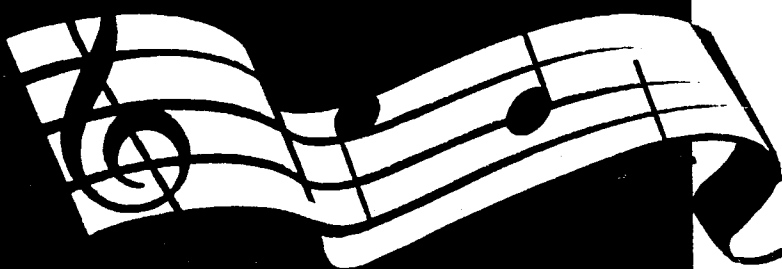
Fire Prevention Poster Contest Winners

Congratulations to the winners of the Fire Prevention Week Poster Contest. Each year the judges for the contest say that it gets harder and harder to judge the posters. There are a lot of talented artists in our schools and judging the posters is a challenge. Thanks to all of the students who participated.



The winners are:

<u>Gardiner Elementary School</u>	<u>Mammoth Elementary School</u>	<u>West Yellowstone School</u>
Kindergarten None	Jay Bueter	Grayson Bell Kyla Binfet
First Grade Forrest Reinhart	Leyla Kirschner	Mariah White Alicia Kirkpatrick
Second Grade Andy Coy	Tess Whittlesey Justin Koel	Maisie Gospodarek
Third Grade Paige Blomquist	Laura Bueter	Emma Wimberley
Fourth Grade Mariah Meyer	Forrest Madsen	Kendra Johnson
Fifth Grade Melissa Rees Courtney Blomquist	John David Sacklin	Michael Hoskins
Sixth Grade Darren Blomquist	Mary Cote	Shanea Farmer



Community Dance

Friday, October 26th

7:00 PM

Mammoth School

If you can walk, you can
Contra Dance!

Observers are also welcome.

NO CHARGE! Donations will be
accepted to help cover costs.

Bring snacks or refreshments
to share.

Everyone is
invited to join us
for a fun evening of
contra dance with the
Mammoth Hot Strings Band.
All dances will be taught and
are easy to learn. This is a
great family activity. Contras
have been around for hundreds
of years, and were once a
primary social activity in this
country enjoyed by all age
groups. There is a caller
similar to square dancing. You
don't need a partner.



A great evening for everyone!



“Winged Victory”

A framed, limited edition print by Morten Solberg, is on display at the Yellowstone Gallery in Gardiner, Montana.

*** Purchase a Raffle Ticket @ \$1.00***

All proceeds from this raffle will be sent to the Twin Towers Fund. This fund will assist the families of the NYC Fire & Police Departments and other emergency workers who gave their lives in the rescue effort at the World Trade Center.

The raffle will conclude on October 19th with a public drawing at the Yellowstone Gallery.

OR See Dayna McClure (2304) for raffle tickets



Yellowstone Association Institute Winter Field Courses

We still have many winter courses with spaces available.

Check out some of our new Winter courses!

Remember, employees and their immediate family members are eligible for a 50% discount on Institute tuition on a space available basis.

Wilderness First Aid

December 1-2, 2001 (#1201)

Location: Lamar Buffalo Ranch

Instructor: Wilderness Medicine

Institute Staff *Limit: 24*
\$130 (Member's fee \$120)

Do you spend a lot of time in the outdoors? Have you ever wondered how you would respond to a backcountry emergency? This 16-hour certification course is ideal for hikers, skiers, and outdoor professionals who want to learn the basics of emergency care in remote settings. Some of the topics to be addressed are patient assessment, shock, wilderness wounds, fractures and dislocations, hypothermia, heat illness, altitude illness, and bites and stings. Emphasis is placed on learning the principles of medical care rather than memorizing information. May be used to re-certify as a Wilderness First Responder. No previous certification is required.

We will meet in the Lamar Ranch area at 8:00 am on the first day and end at 5:00 pm on the last day.

Family Winter Adventure at the Buffalo Ranch

Limit: 20

December 27-29, 2001 (#1202)

Instructor: Bobbi Geise &

Lidie Whittier Robbins

Adult-\$180 (Member's fee \$170)

Child-\$100 (Member's fee \$90)

Strap on your skis or snowshoes and come explore Yellowstone's winter wilderness with your family. We'll search for signs of wildlife, study the science of snow, and discover how plants and animals survive Yellowstone winters. A variety of adventures will encourage hands-on exploration and discovery. All abilities are welcome, but be prepared to

spend several hours at a time on the trail.

We will meet at the Lamar Buffalo Ranch at 10:00 am on the first day and end at 1:00 pm on the last day. Children must be at least 8 years of age. *Participants must provide their own skis (preferred) or snowshoes and poles.*

Snowshoeing In Yellowstone

January 11-14, 2002 (#101)

Limit: 13

Location: Lamar Buffalo Ranch

Instructor: Scott Wood

\$185 (Member's fee \$175)

Discover Yellowstone's winter backcountry via snowshoes, which provide a simple yet efficient means of traveling on snow. We will see elk and wolves on our treks, and hear them bugle and howl. Bring cameras, warm breathable clothing and a lot of desire, determination, and energy for a memorable experience.

We will discuss the value of wilderness and of adventure pursuits, group/team work, communications, and safety issues. We will cover the topic of avalanches in a lecture with video focusing on how to recognize avalanche terrain, what to do if caught, and avalanche rescue. The hikes are not difficult, beginning with a flat day trip and ending with a longer uphill trip. Elevation gain is about 700 feet. Participants should be in good physical condition and have appropriate winter clothing.

We will meet in the Lamar Ranch area at 7:00 pm on the first day and end at 3:00 pm on the last day. *Participants must provide their own snowshoe equipment.*

Snow Tracking Ecology

January 18-20, 2002 (#102)

Limit: 10

January 18-22, 2002 (#103)

Limit: 10

Location: Lamar Buffalo Ranch

Credit pending: U, 1 semester hour, U of MT, MSU

Instructor: James Halfpenny, Ph.D.

(#102) \$190 (Member's fee \$180)

(#103) \$290 (Member's fee \$280)

Experience a learning-and-research, hands-on practicum and study the ecology of animals by following their trails in snow. This three-day course can be extended to include an optional two-day research project. Lectures cover gait patterns, snow properties, snow tracking, melted-out footprints, snow load, snow pillars, snow casting, snow tracking index, measuring, trail interpretation, and ethograms. Participants must be able to ski or snowshoe for afternoon field trips. Evenings will be spent analyzing the day's fieldwork. During the optional two-day research opportunity, participants will complete individual projects and report at a group symposium the final afternoon.

Participants may take either the three-day or five-day program. We will meet at Lamar at 8:30 am the first morning and finish by 5:00 on days 3 and 5. *Participants must provide their own ski or snowshoe equipment. Fee includes \$20 for course materials.*



The Wolf: A Global History

January 23-25, 2002 (#106)

Limit: 19

Location: Lamar Buffalo Ranch

Instructor: Brett Walker, Ph.D.

\$135 (Member's fee \$125)

Focusing on the United States and Japan, the course will explore the diverse, and oftentimes contradictory, world attitudes toward this elusive carnivore. Whereas farmers in the United States hired "wolfers" to rid the western landscape of wolves, in early Japan farmers actually worshiped wolves as "the large-mouthed true god," a divine predator that protected their crops from the ravenous appetites and sharp hooves of deer and wild boar. Two powerful industrial countries with two very different attitudes about the wolf. Classroom activities and field trips will examine the wolf from the perspective of a historian using scientific works, historical diaries, and visual art from Yellowstone, Japan, and around the world.

We will meet at the Lamar Ranch at 7:00 pm on the first day and end at 4:00 pm on the last day.

Level I Avalanche Course

January 28-30, 2002 (#107)

Limit: 24

Location: Lamar Buffalo Ranch

Instructors: American Avalanche Institute Staff: Rod Newcomb, Doug Chabot, and Ron Johnson

\$230 (Member's fee \$220)

This course presents basic information about weather, snowpack, and terrain factors which contribute to avalanche hazard. Students dig snowpits, identify weak and strong layers, and practice routefinding. Search and rescue will also be covered including search patterns and strategies, use of transceivers and probe poles, and victim extraction.

We will meet at the Lamar Ranch at 7:00 pm on the first day and end at 4:00 pm on the last day.

A Look Through Winter's Window (#105)

Limit: 13

January 31-February 3, 2002

Location: Lamar Buffalo Ranch

Instructor: Leslie Stoltz

\$235 (Member's fee \$225)

Expand your experience of Yellowstone by embracing the winter months and the magic of a landscape blanketed with snow. We will explore backcountry trails in the Lamar area and take a snowcoach shuttle to the park's interior. Discussions will

cover winter ecology, tracks, natural history and understanding snow. Two indoor sessions will expand on these ideas and address winter equipment, safety and comfort.

Morning starts will vary depending on weather. We'll be out on the trail 4 to 5 hours each day, with stops, skiing at 7,000 feet with an elevation gain or loss of 800 to 1,000 feet. Previous cross-country ski experience is helpful. Bring a daypack, trail lunches, water bottle, sun and weather protection, and appropriate ski equipment for on- and off-trail activity.

We will meet in the Lamar Ranch area at 9:00 am on the first day and end early afternoon on the last day. *Participants must provide their own ski and/or snowshoe equipment. Fee includes \$15 for a snowcoach shuttle into the interior.*

Yellowstone's Northern Range: Ecology, History, and Management of a Complex Grazing System

Limit: 13

February 9-10, 2002 (#204)

Location: Lamar Buffalo Ranch

Instructor: Doug Houston, Ph.D.

\$140 (Member's fee \$130)

Winter is "crunch time" for the seven species of grazing mammals and their predators on Yellowstone's famed "Northern Range." Explore this remarkable grazing system with former Park Service research scientist Doug Houston. We will observe the foraging behavior of animals that allows them to survive under harsh winter conditions. We will also discuss the dynamics of populations and grazing systems, vegetation changes that have occurred on the area, and current management issues.

Day 1 will include a morning lecture introducing the Northern Range and its inhabitants. An afternoon field trip in the Lamar Valley will allow us to observe bison, elk, and (perhaps) bighorn sheep. Evening lecture will describe the grazing system and vegetation changes on the area. Day 2 will begin with discussions of management issues. In the afternoon we will travel back down through the range to the Gardiner, Montana, area. This tour will provide the opportunity to observe bighorn sheep, pronghorn and mule deer and to discuss elk management outside the park. Be prepared for extremely cold weather; subzero temperatures are common during February. Full appreciation of Yellowstone's Northern Range ecosystem requires a winter visit.

We will meet in the Lamar ranch area

at 9:00 am on the first day and end late in the afternoon on the last day near Gardiner, Montana. Fee includes a copy of *Yellowstone's Northern Range: Complexity and Change in a Wildland Ecosystem*.

Exploring Yellowstone on Snowshoes

Limit: 13

February 12-14, 2002 (#201)

Location: Lamar Buffalo Ranch

Instructor: Dale Sexton

\$170 (Member's fee \$160)

For those who do not ski, snowshoeing provides an excellent, low-impact, yet rigorous mode of travel for exploring the snow-covered landscape of Yellowstone. Course discussion will include winter ecology, preparation for winter excursions, avalanche awareness, map reading, and route finding. Enjoy winter in Yellowstone! Be prepared to travel 2 to 8 miles a day on snowshoes, depending on conditions. Short morning presentations will precede each day's excursion.

We will meet in the Lamar Ranch area at 9:00 am on the first day and end at 3:00 pm on the last day. *Participants must provide their own snowshoe equipment.*

Exploring Yellowstone's Winter World on Skis

Limit: 13

February 15-17, 2002 (#202)

Location: Lamar Buffalo Ranch

Instructors: Wayne Phillips & Leslie Stoltz

\$180 (Member's fee \$170)

Enjoy the rhythmic movement of cross-country skiing and explore the magical winter world of Yellowstone National Park. Practice and improve your skiing skills while observing clues to the geologic past and insights to the ecology of the present.

Days will start with indoor sessions introducing the basics of the winter environment and its effect on plants and animals, map and compass practice, and snow and avalanche dynamics. The later part of the morning through the remainder of the day we will be outside skiing and exploring. Be prepared for 3 to 5 hours of skiing daily with moderate elevation gain.

We will meet in the Lamar Ranch area at 9:00 am on the first day and end at 3:00 pm on the last day. *Participants must provide their own daypack, field lunches/snacks, outdoor clothing and ski equipment.*

Wolf Biology and Interactions With Prey

February 20-21, 2002 (#205)

Limit: 19

Location: Lamar Buffalo Ranch

Instructor: L. David Mech, Ph.D.

\$150 (Member's fee \$140)

The return of wolves to Yellowstone has allowed unprecedented direct observation of the animals and their interactions with prey. Through both field observation and videos, this course will present the latest information about wolf biology and wolf-prey relationships. Pack structure and function, hunting techniques, prey culling, and wolf-prey population dynamics will be the main topics covered.

Wolf Watching In Yellowstone

February 22-24, 2002 (#203)

Limit: 19

Location: Lamar Buffalo Ranch

Instructor: Norman A. Bishop

\$170 (Member's fee \$160)

Yellowstone National Park may be the best place in the world to watch wolves. Bring your binoculars, scope and tripod, warm clothing for subzero mornings, and join the crowd. We will consider the scientific and social reasons why some Americans have alternately reviled and revered wolves, and examine the process of justifying wolf restoration as an experimental population under the Endangered Species Act. Find out what the wolves eat, how they kill their prey, which does the killing, and what effect the wolves have on other animals, including livestock outside the park. We will watch for wolves at dawn and dusk from the roadside, and discuss them while watching videos and slides in the classroom at mid-day. Depending upon conditions and the wishes of participants, we may ski in wolf country and look for tracks. Cross-country skis and basic outdoor clothing required. Gaiters are a big help.

We will meet in the Lamar Ranch area at 9:00 am on the first day and end at 3:00 pm on the last day.

Wolf Social Behavior

March 6-8, 2002 (#304)

Limit: 19

Location: Lamar Buffalo Ranch

Instructors: Linda Thurston, M.S., Pat Goodman, M.S.

\$145 (Member's fee \$135)

Each day, the wolves of the Druid Pack enact a complex social drama expressed in a language of body postures, vocaliza-

tions, and scent marks. Using science to examine wolf social behavior, this course will teach you how to translate these communications as they play out in the field and on video. Classroom sessions will focus on the use of ethograms, the "keys" researchers use to identify and interpret wolf social behavior. At dawn and dusk, we will head into the field to apply our new skills. The breeding season will have just ended and we will attempt to observe and interpret the behavior of breeding age females as they compete for social rank and access to resources.

We will meet at the Lamar Ranch at 4:00 pm on the first day and end at 4:00 pm on the last day.

Scavenger Hunt:

Wolf-Scavenger Relationships

March 11-13, 2002 (#305)

Limit: 13

Location: Lamar Buffalo Ranch

Instructor: Dan Stahler, M.S.

\$170 (Member's fee \$160)

Wolves regularly kill large prey to feed themselves, and spend many hours of their lives near carcasses – but they are not alone. A diverse and abundant scavenger community is intimately connected to the ecology and behavior of wolves. Join us on a real scavenger hunt to explore the diverse relationships between wolves and scavengers, through slide presentations, film, and field observations. We'll discuss feeding strategies and behaviors of wolves, ravens, magpies, coyotes, eagles, grizzlies, and other species, and how they each interact with one another. Each day, we'll attempt to observe wolves and scavengers interacting at carcasses.

Plan on being in the field for sunrise and sunset each day, with mid-day breaks and time for classroom activities. Attire (clothing AND footwear) for extremely cold weather conditions is necessary. Plan for moderate to strenuous hikes for better field observations.

We will meet at the Lamar Ranch at 9:00 am on the first day and end at 4:00 pm on the last day.

Winter Tales

March 13-15, 2002 (#301) Limit: 13

Location: Lamar Buffalo Ranch

Instructor: Jim Garry, M.S.

\$170 (Member's fee \$160)

Winter has laid long on the Lamar and its tales are waiting for us. During the day we will search, on snowshoes, for obvious tales observed in animal behavior as the park's year-round inhabitants struggle

toward spring. At night we'll share winter stories; tales of Old Coyote, of Raven, of Bear, and others.

March is still winter in Yellowstone. Be prepared for cold weather. Our field time will involve both sitting and watching animals and hikes on snowshoes.

We will meet in the Lamar Ranch area at 9:00 am on the first day and end mid-afternoon on the last day. *Participants must provide their own snowshoe equipment.*

Wildlife Observation—Winter

March 22-25, 2002 (#303) Limit: 13

Location: Lamar Buffalo Ranch

Instructor: Gene Ball

\$170 (Member's fee \$160)

Winter offers its own unique wildlife viewing opportunities. The major goal and activity of this introductory course is field observation. Methods of unobtrusive observation and the ethics of interaction with wildlife will be the central themes. The opening session will cover use of binoculars, spotting scopes, and tripods for quality wildlife observation. Discussion will focus on various wildlife topics, issues, and controversies. Our schedule will be flexible to conform to the movements of wildlife. Be prepared for morning and evening field trips, optional hiking, snowshoe, or ski outings.

We will meet in the Lamar Ranch area at 3:00 pm on the first day and end at 1:00 pm on the last day.

Winter Photography

March 24-26, 2002 (#306)

Limit: 11

Location: Lamar Buffalo Ranch

Instructor: Tom Murphy

\$170 (Member's fee \$160)

This course is for beginning to intermediate photographers who are interested in the unique technical and exposure challenges that are presented by Winter. Landscape composition, wildlife ethics, understanding wildlife behavior, and photographing in Yellowstone's winter environment are the main topics in this class. Individual instruction, classroom critiques, and slide presentations will be used to present information.

**To register
visit our website at
YellowstoneAssociation.org
or call us at
(307)344-2294**

Fall Health Screen

Gardiner School Cafeteria
Wednesday, October 17th
6am - 9am

Lab Blood Profile Testing \$35.00

- Diabetes, Thyroid & Kidney function screening,
- Cholesterol - Total, HDL, LDL, ● Triglycerides,
- Uric Acid, ● TSH, ● Hematocrit, ● Glucose,
- Potassium, ● ALT

Prostatic Specific Antigen

(PSA) \$17.50

(Optional Blood Screening for Males)

ColoCare Kits \$3.00

**This is a fasting blood test.
Nothing but water after 8:00 pm the night before!**

*This Health Fair Blood Screen is brought to you through the
cooperation of The Mammoth Clinic and Livingston Memorial
Hospital*

*Please call The LivingSteps Wellness Center at 222-8282, or
The Mammoth Clinic at 344-7965 for more information*



MAMMOTH CLINIC
Box 607
Yellowstone, Wyoming 82190

October 2001

Gardiner Public School Calendar

SUNDAY	MONDAY	TUESDAY	WEDNESDAY	THURSDAY	FRIDAY	SATURDAY
	1 2:00pm & 3:30 Jr. Hi & JV FB w/ Shields Valley - HOME 3:30pm H.S. FB w/ Shields Valley - HOME (J.V. @ 2:00 p.m.)	2 4:00pm 5th & 6th Grade GBB @ St. Mary's, Lv:2: 15pm, Rt:8: 5:30pm Jr.Hi GBB @ St. Mary's, Lv:2:15pm, Rt:8: 45pm	3	4 3rd & 4th Grade Field Trip to Yellowstone Park 6:00pm C-squad GBB @ Bozeman, Lv:3:45pm, Rt: 10:00pm	5 SKIP 3RD HOUR 4:00pm 5th & 6th Grade GBB w/ Monforton - HOME 5:00pm H.S. FB w/ Blue Sky @ Harlowton, Lv:1: 00pm, Rt:TBA 5:15pm Jr. Hi GBB w/ Monforton - HOME	6 9:00am 5th & 6th Grade GBB Round Robin @ Clyde Park 11:00am & 12:30 Jr. Hi GBB w/Shields Valley - HOME 5:30pm & 7:30 H.S. GBB @ MCHS, Lv: 2:15pm, Rt:12:45am
7	8 Columbus Day (Observed) 2:00pm & 3:30 Jr. Hi & J.V. FB @ WSS 3:30pm H.S. FB @ WSS (J.V. @ 2: 00 p.m.)	9 4:00pm & 5:30 Jr. Hi GBB @ Livingston #2	10 7:00pm School Board Meeting	11	12 3:00pm & 4:30 Jr. Hi GBB w/West - HOME 6:00pm & 7:30 H. S. GBB w/West - HOME	13 1:00pm H.S. FB w/ Harlowton, HOME (non- conference) 3:00pm & 4:30 H. S. GBB @ Sheridan
FIRE PREVENTION WEEK						
14	15 2:00pm & 3:30 Jr. Hi & J.V. FB w/ WSS - HOME 3:30pm J.V. FB w/ WSS - HOME	16	17 1:00pm H.S. FB w/ Shields Valley - HOME 6:00pm & 7:30 H. S. GBB w/Bridger - HOME	18	19	20
FORMER TWO SCHOOLS						
21	22 "WARNING WEEK" ELIGIBILITY DUE BY NOON	23	24	25 6:00pm & 7:30 H. S. GBB w/Shields - HOME	26 6:00pm & 7:30 H. S. GBB @ Big Timber	27 FB - 1st Round Playoff- TBA
Jr. Hi GBB Livingston Tournament TBA						
28 Daylight Savings (Set clocks back 1 hour)	29	30	31 END OF 1ST QUARTER Halloween			

September						
S	M	T	W	T	F	S
						1
2	3	4	5	6	7	8
9	10	11	12	13	14	15
16	17	18	19	20	21	22
23	24	25	26	27	28	29
30						