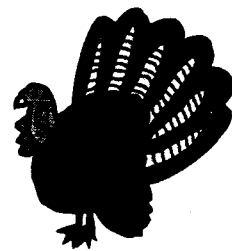


The Yellowstone News

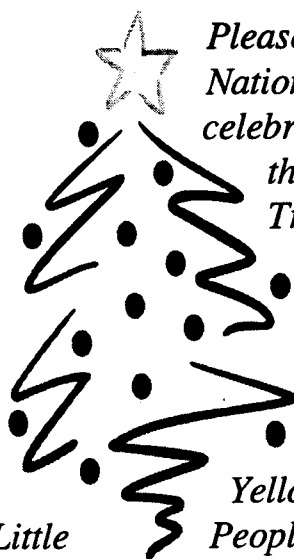


November 22, 1999

Next Deadline: January 12, 2000

Annual Tree Lighting Ceremony Scheduled

Former Yellowstone Researchers Honored for New Book



Please join the Yellowstone National Park staff in celebrating the season with the annual Christmas Tree Lighting Ceremony on December 8, 1999, in the Mammoth Recreation Hall beginning at 6 p.m. The Yellowstone Park School, Little People's Learning Center and the Gardiner High School choirs will provide entertainment along with a special visit from Santa and his elf. Your contribution of hors d'oeuvres will be appreciated. The 'official' lighting will be held in the Mammoth Recreation Hall. See you there for an evening of fun and holiday cheer!

Two former Yellowstone scientists, Dr. Mary Meagher and Dr. Douglas B. Houston, have won the prestigious Joan Paterson Kerr Award for their book, *Yellowstone and the Biology of Time*. The award was announced at the Western History Association's annual meeting in early October. *Yellowstone and the Biology of Time* was chosen as the best illustrated book on the history of the American West for 1999.

By analyzing 100 sets of comparative photographs, *Yellowstone and the Biology of Time* reveals the dynamic nature of Yellowstone's changing landscape. The photographic sets are followed by an extended narrative describing the geology, soils, and vegetation of the park, as well as a discussion of "agents of change" that shape today's wild Yellowstone: climate, fire, wildlife, humans, and other forces still active in the park.

The Joan Paterson Kerr Award was established in 1992 by Chester Kerr in honor of his wife, Joan Paterson Kerr. The biennial award was originally established to recognize the best illustrated book for a university press; last year that changed to include all presses. *Yellowstone and the Biology of Time* was printed by the University of Oklahoma Press.

The Yellowstone News is a National Park Service employee newsletter, published monthly by the Public Affairs Office. To submit articles, notices of events, classified ads, or announcements please email yell_public_affairs@nps.gov, call 344-2013, or send via interdepartmental mail or fax to 344-2014. Please include your name and phone number with all submissions.



1999 Open Season for Federal Employees' Health Benefits

This year's open enrollment period for the Federal Employees' Health Benefits (FEHB) Program will be from November 8 through December 13, 1999.

During the enrollment period, permanent employees may register to enroll, change from one option or plan to another, change from self-only to self-and-family; or any combination of these changes. If you are happy with your current health provider, you do not need to do anything at this time.

Plan brochures, comparison charts, and forms are currently available on the Internet at <http://www.opm.gov/insure> or in the Personnel Office.

Enrollment forms must be submitted prior to the close of business on December 13, 1999. Changes to your health insurance coverage can also be made using the Employee Express system during the designated open season. For NPS, the telephone numbers for Employee Express are (912) 757-3080 or (800) 827-6254. Hearing impaired NPS employees can call the TDD number at (912) 757-3030 or (888) 880-0412.

All changes in enrollment will be effective January 2, 2000.

Personnel News...

Welcome to Yellowstone:

Christine Smith	Park Ranger, Interpretation, Mammoth
Patricia Burns	Park Ranger, Interpretation, Old Faithful
Terry Lennox	Utility Systems Operator, Canyon
Nancy Hinman	Geologist

New Permanent:

Aric Werner	Utility Systems Operator, Old Faithful
David Schasteen	Utility Systems Operator, Lake
Lessie Sites	Visitor Use Assistant
Ivan Kowski	Visitor Use Assistant

Promotions:

Dawn Webster	Park Ranger, Interpretation, Old Faithful
Gary Youngblood	Supv. Park Ranger (LE) Canyon

Student Career Experience Program:

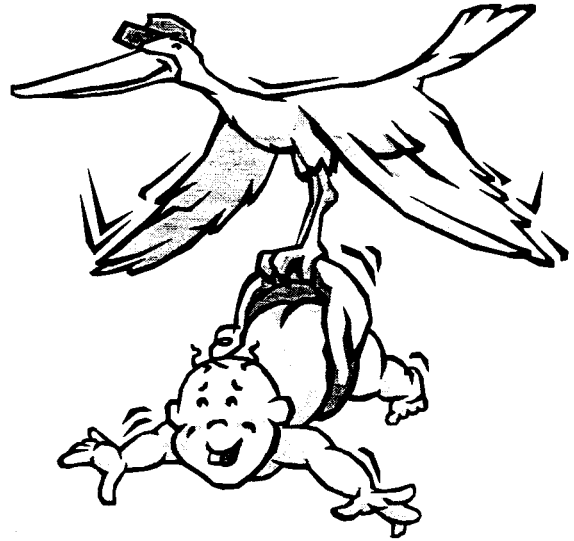
Robert Whitson	Utility Systems Operator, Old Faithful
----------------	--

Peer Awards...

The following have received Peer Awards for the month of November:

Colleen Athas	Programs Office
Tom Barr	Planning Office
Kevin Richen	North District Maintenance

Jim & Karen Kitchen welcome
new daughter - Corrina Lynn!
Corrina arrived on November
9, 1999, at 12:24 p.m. She
weighed 7 lb. 6 oz and was
19 1/2 inch long.
Congratulations Jim & Karen!



Many thanks...

☺ *Thank you from Snoopy School, to all offices that participated in the 4-year-olds' Trick-or-Treating. We had a blast - hope you did too! We loved the adult costumes!*

☺ *Words could never express the gratitude we feel for the incredible support given to us from the Gardiner/Mammoth/Valley community. Every day is a reminder of how fortunate we are to live in such a special place. The gestures of love and kindness have come to us in the form of prayers, cards, flowers, soups and casseroles, labors of love, a bake sale and a raffle where so much was given by artists, craftsmen, business and individuals. Special thanks to Don, Joni, Cathy, Kelly, Carol, Marge, Pat, Schalene, the Cleavelands, McClures, and Paulsens, and to the extraordinary family of survivors who give us strength and hope every day - you know who you are! With sincere love and appreciation, we thank you all. Christina & Jerry Kahrs*



Classified Ads:

For Sale - 1984 Chevy Suburban, two-wheel drive, towing package, low mileage, an extra set of studded snow tires. Call 344-2029 (Office) or 848-7575 (Home after 6 p.m.) - ask for Edith.

For Sale - 1994 GMC 1/2 ton, extended cab, 2WD pick up. 350 engine, 5 speed, 80,000 miles - excellent condition. Call 848-7616.

For Sale - 98 Polaris, Indy Trail Touring, 2-up seat, approximately 4,200 miles. \$2850 OBO - call Rick or Patty at 848-2139.

For Sale - Kids x-country skis, boots, poles and bindings. Two sets. Call 848-7933 or x2272.

For Sale - 1991 Mitsubishi Montero RS 4x4 SUV. Power windows/locks, cruise, CD. Blue, 113K, asking \$7300. Call Richard Moore at 344-7362.

Wanted to buy - used tow sled. Call 545-2716 or 545-2754 and leave a message with information.

Wanted to buy- Child's sleigh to pull behind a snowmobile. Prefer the covered version. Call Mark or Monica at 242-4295, Grant Village.

Free for the taking - small glass aquarium (10 gal?); has a crack but would be great for a turtle, hamster, rat, etc. Call 344-7788.



Dance classes coming in December!

Country Swing, Two Step, Three Step, Waltz, Jitterbug,

50's Swing. December 13, 14, & 15, from 7 p.m. to 8:30 p.m. at the Gardiner School Multi-Purpose Room.

\$5.00 per person/per night. Couples or singles - all experience levels welcome. Please wear smooth soled shoes. If questions, please call Dave Price at 848-2275 in the evening.

Tis the season...so mark your calendars:

- ❖ 12/8 - Christmas Tree Lighting Ceremony 6 p.m.
- ❖ 12/9 - Yellowstone Association Holiday Book Sale 10 a.m. to 5 p.m.
- ❖ 12/9 - YFEA Holiday Party 4 p.m.
- ❖ 12/9 - Gardiner High School Choir Madrigal Dinner 6:30 p.m.
- ❖ 12/16 - Mammoth Clinic Christmas Open House 3 p.m. to 5 p.m.
- ❖ 12/16 - Post Office Open House 1:30 p.m. to 5:00 p.m.
- ❖ 12/16 - Chief Rangers Office 3:00 p.m. to ?
- ❖ 12/17 - Hamilton General Store Open House 3 p.m. to 5 p.m.
- ❖ 12/20 - Third Floor East (Fiscal, Interp., Bear Mgmt.) 3 p.m. to 5 p.m.
- ❖ 12/21 - Yellowstone Center for Resources 3 p.m.



HOLIDAY TOY AND BOOK COLLECTION FOR OGLALA INDIAN CHILDREN

In June, tornadoes struck the remote village of Oglala on the Pine Ridge Indian Reservation in South Dakota. As winter approaches, many Oglala families are still struggling to recover from the loss of homes or property. The Oglala Lakota/Sioux are one of the American Indian tribes culturally affiliated to Yellowstone and other parks in the region. The reservation is part of Shannon County, which is consistently listed in census statistics as the poorest county in the US. The unemployment rate on the reservation fluctuates seasonally between 70 and 85 percent.

Please join us in a collection of new or gently used toys and children's books to help the Oglala families. Your donations (unwrapped) can be placed in boxes in the following locations by December 9th:

- * YCR building
- * Administration Building hallway
- * Amfac's Human Resource Office (Gardiner) * Old Faithful Snowlodge EDR
- * Mammoth Hotel General Offices - Operations * YFEA Christmas Party

Volunteers will drive the donations to the Loneman School at Oglala for delivery on December 11th. Other parks and organizations who are participating follow. Please contact Laura Joss at 344-2154 or Mia Blackie at 344-5301 if you have questions.

Amfac Parks and Resorts, Gardiner, MT residents and businesses Hamilton Stores, Yellowstone Federal Employees Association
Agate Fossil Beds National Monument
Badlands National Park
Devils Tower National Monument
Fort Laramie National Historic Site
Scotts Bluff National Monument
Wind Cave National Park
Yellowstone National Park

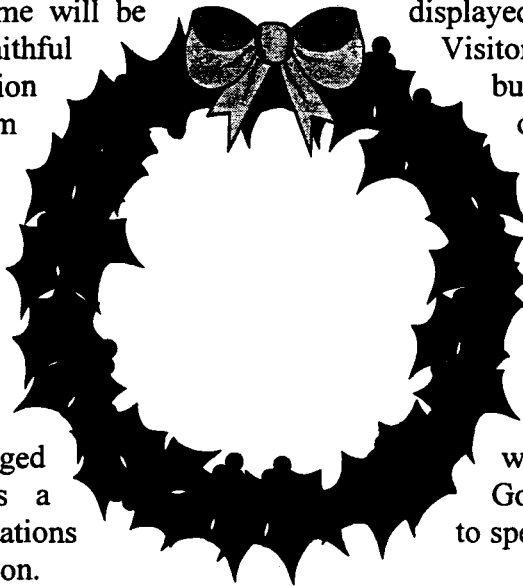
News from the Yellowstone Park Foundation...

Give a Gift to the Park This Christmas

Celebrate the holiday season a little differently this year. Give the gift of Yellowstone National Park to friends and family members by making a tax-deductible donation to the Yellowstone Park Foundation. It is a great way to show people you care. Plus, it benefits a place and a cause that we all care about – Yellowstone.

If you send a donation of \$25 or more to the Yellowstone Park Foundation in someone's name, that person will automatically become a member of the Foundation and will be designated a "Friend of Yellowstone." The person named in your gift will receive a letter saying that a donation has been made to the Foundation in their honor and that their name will be displayed for one year in the Yellowstone Honor Book at the Old Faithful Visitor Center. They will also receive a bumper sticker. You, as the donor, will receive a thank-you letter from our Executive Director, Lisa Diekmann.

If your gift in someone else's name is more than \$499, the recipient will receive a postcard book of historic Yellowstone photographs. Their name will be listed in the Honor Book, as are all donors of gifts between \$25 and \$999. For gifts of \$500 to \$999 the premium is a Tom Murphy video of the wildlife and wonders of Yellowstone. Gifts of \$1,000 or more are acknowledged with a bronze plaque on the Honor Wall at Old Faithful, plus a Golden Eagle pass for one year, the Tom Murphy video, and invitations to special events put on by the park and by the Yellowstone Park Foundation.



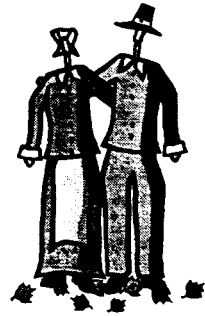
Though you may not be interested in making a contribution to the Foundation in your name or someone else's, perhaps you know someone personally or professionally through your work in Yellowstone who loves the park and would like to know what they can do to help. Your mention of the Foundation to such people could be invaluable in spreading the word about the Foundation and its mission to protect, preserve and enhance Yellowstone National Park.

Donations to the Yellowstone Park Foundation can be made over the phone and can be charged to Visa or MasterCard. Our phone number in Bozeman is 406.586.6303. If you or someone you know would like to know more about the Foundation, our brochures are available in all park visitor centers. More detailed information, such as descriptions of the more than 30 Yellowstone projects already funded by the Foundation, is available at the Public Affairs Office, as well as on our website at www.ypf.org. Our e-mail address is yellowstn@aol.com.

To all of you in the park from all of us at the Foundation, have a joyous holiday season. Let us be the first to wish you a Happy New Millennium!

– The Yellowstone Park Foundation Staff

Health News...



- Influenza type A or type B can cause a febrile, acute viral infection of the nose, throat, bronchial tubes, upper and lower lungs and middle ears. It is highly contagious and usually enters the airways through the mouth, nose or eyes.

Recognizing flu:

- Sudden onset
- Fever, greater than 101 for 3 - 4 days
- Cough, dry, non-productive, severe
- Body aches, severe
- Headache
- Fatigue, up to 3 - 4 weeks
- Chest discomfort, common

Recognizing cold:

- Gradual onset
- Rare
- Hacking
- Slight
- Rare
- Very mild
- Mild to moderate

Treatment: Antibiotics are not effective. There are other medications. They should be started as soon as possible after getting the flu. See your physician.

Vaccination: recommended for prevention or less severe cases of Flu.

Vaccine is still available at the Mammoth Clinic. Please call for an appointment at 344-7965.

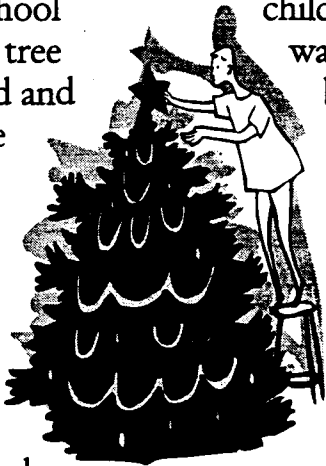
- Smoking is the No. 1 cause of preventable death in the U.S. Being obese is No. 2.
- One out of three Americans who have high blood pressure don't know they have it. High blood pressure usually has no symptoms.



Thoughts of Old from the Livingston Post 1900....

Christmas 1899 - A Pleasant Occasion

The ladies of Fort Yellowstone united in making Christmas a joyful occasion for the Sunday school children. The Christmas tree was brilliantly illuminated and bore an abundance of that kind of fruit which children most desire. Captain Brown made one of the jolliest Saints that ever distributed babes to the outstretched arms of the baby-mothers, so eager to kiss and embrace them. The boys were in raptures over their horns, tin horses, soldiers and locomotives. All were sweetened up to the highest degree ever indicated by any saccharimeometers, boys and girls being most accurate ones. When the tree was cleared of its fruit the jolly Saint informed his patrons that there were millions more expecting to see him that night and that he must bid them farewell. "Have you far to go!" inquired a sweet little girl in a voice that indicated both affection and pity for the good, hard-working Saint. This Mother Eve curiosity and sympathy brought the house down with laughter and applause alike from citizen and soldier. The hoary-headed Saint vanished, surrounded with a halo of glory in the minds of the children, and that he was no mere illusion was evident from the fact that arms and pockets were full of dolls, candies and many other good things. Mrs. W.E. Wilder, although suffering from a sprained ankle, was present and furnished the music to which the school children



marched and sang in joyful concert. Mrs. Wilder is superintendent of the Sunday school and is very much loved and respected by the children. That night she looked radiant, having had a telegram from Col. Wilder that he was alive and well in Manila.



Madrigal Dinner December 9th

The Gardiner High School Choir Madrigal Dinner will be Thursday, December 9th, at 6:30 p.m. Tickets are \$15 each and available at Gardiner School. The Choir is also raffling a Mary Hudson Quilted Christmas Wall Hanging to support the Choir at the Moscow Idaho Jazz Festival. Tickets are available from Choir members, Food Farm, or GHS office. Thanks for all the wonderful community support!



Eating Healthy....



Leftover turkey? Try this....

Couscous-Turkey Salad

- 1 cup water
- 3/4 cup uncooked couscous
- 2 cups chopped cooked turkey
- 3/4 cup thinly sliced celery
- 3/4 cup frozen green peas, thawed
- 1/4 cup sliced green onions
- 1/4 cup light mayonnaise
- 1/4 cup fat-free, less-sodium chicken broth
- 1 tsp Dijon mustard
- 1/4 tsp salt
- 1/4 tsp coarsely ground black pepper

1. Bring the water to a boil in a medium saucepan, and gradually stir in the couscous. Remove from heat; cover and let stand 5 minutes. Fluff with a fork. Combine couscous, turkey, celery, peas, and onions in a large bowl. Combine mayonnaise and remaining ingredients; stir well with a whisk. Add to couscous mixture; toss well. Cover and chill at least 2 hours. Yield: 6 servings (serving size: 1 cup).

Classic Pecan Pie

Crust:

- 1 cup all-purpose flour
- 2 Tbls granulated sugar
- 1/2 Tsp baking powder
- 1/4 Tsp salt
- 1/4 cup fat-free milk
- 1 Tbls butter or stick margarine, melted
- Cooking spray

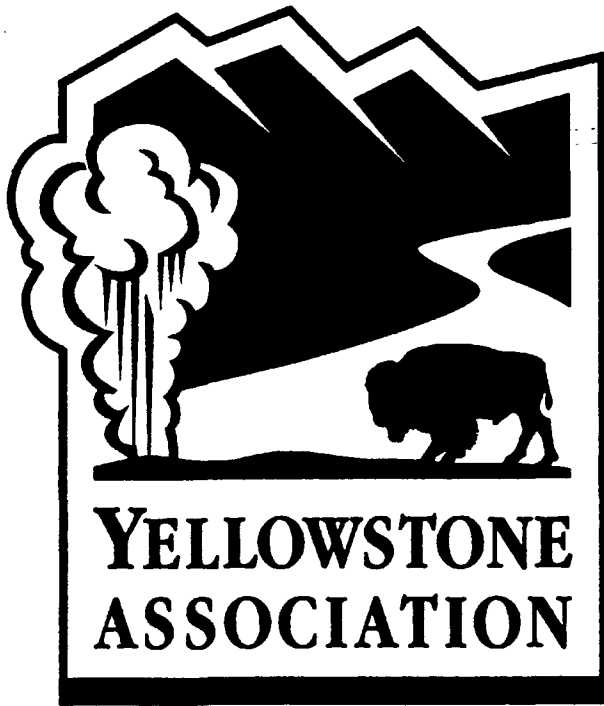
1. To prepare crust, lightly spoon flour into a dry measuring cup; level with a knife. Combine flour, granulated sugar, baking powder, and 1/4 tsp salt in a bowl. Add milk and butter; toss with a fork until moist.
2. Press mixture gently into a 4-inch circle on heavy-duty plastic wrap; cover with additional plastic wrap. Roll dough, still covered, to an 11-inch circle. Freeze 10 minutes or until plastic wrap can be easily removed.
3. Remove 1 sheet of plastic wrap; fit dough into a 9-inch pie plate coated with

cooking spray. Remove top sheet of plastic wrap. Fold edges under; flute.

Filling:

- 1 large egg
- 4 large egg whites
- 1 cup light or dark-colored corn syrup
- 2/3 cup packed dark brown sugar
- 1/4 Tsp salt
- 1 cup pecan halves
- 1 Tsp vanilla extract

4. Preheat oven to 350°.
5. To prepare the filling, beat the egg and the next 4 ingredients (egg through 1/4 tsp salt) at medium speed of a mixer until well-blended. Stir in the pecan halves and the vanilla extract. Pour the mixture into the prepared crust. Bake the pie at 350° for 20 minutes, then cover with foil. Bake the pie an additional 20 minutes, or until a knife inserted 1 inch from the edge comes out clean. Do not overbake. Cool pie on wire rack. Yield: 10 servings.



Yellowstone Association Approves over \$520,000 in Park Funding for Fiscal 2000

Each fall, the National Park Service prepares a prioritized list of funding requests which is reviewed at the Yellowstone Association's fall board meeting. All funding requests must be for educational, scientific, or historic projects to fulfill the organization's mission. At the organization's recent board meeting, the Yellowstone Association Board of Trustees approved funding of over \$520,000 for fiscal 2000 to support educational, scientific, and historic projects in Yellowstone.

A portion of the funding (approximately \$25,000) represents a continuation of projects begun in previous fiscal years including completion of grizzly bear DNA research, printing for the 5th Biennial Conference, and an outreach program by the Interpretive Division to area gateway communities.

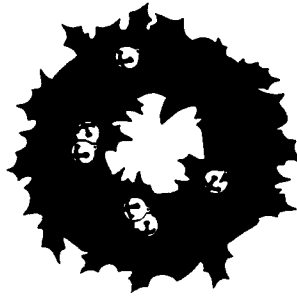
Also included in fiscal 2000 funding is a total of \$279,580 for the new educational film on the park's geothermal processes and features. The film is progressing on schedule to be completed and shown in the Old Faithful Visitor Center beginning in the spring of 2001. Northern Light Productions of Boston has been selected to produce the film.

Other items funded by the Association for the upcoming year include approximately \$44,000 to support research library operations, process new library materials, catalog and preserve archival materials, provide professional conservation of several historic paintings, and protect the park's historic map collection.

The Association will also continue to support a number of park publications during fiscal 2000. An important new book which includes previously unpublished research on the park's ungulates will be produced and printed, partially through a \$7,800 Association grant. A commitment of \$86,000 to print the trail leaflets used in geothermal areas throughout the park and along the Canyon rim trails has been made; the organization will also provide up to a \$20,000 contribution toward printing costs of *Yellowstone Today*, the park newspaper visitors receive at park entrance stations. And, the Association will again fund the printing costs (\$14,000) of four issues of *Yellowstone Science* which provides information on park research and cultural history topics.

The remainder of funding has been obligated to provide supplies and equipment for interpretive operations, to provide educational materials for new law enforcement personnel, and to provide educational materials and activities for those visiting Yellowstone in an official capacity.

ANNUAL HOLIDAY BOOK SALE WITH THE YELLOWSTONE ASSOCIATION



THURSDAY, DECEMBER 9TH, 1999

10:00 a.m. - 5:00 p.m.

This year our sale is being held in the Mammoth Hotel Map Room. Lots of shopping space and great bargains. Join us for cookies and cider! Also, get a 15% discount on all regular priced items in the Albright Visitor Center.



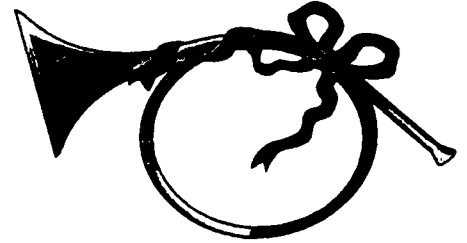
All proceeds benefit
Yellowstone National Park.

YFEA NEWS



1999 HOLIDAY PARTY

THURSDAY, DECEMBER 9TH, 4 PM
at the AMFAC RECREATIONAL HALL



This year's party is bound to be the best! There will be wreaths for sale, door prizes, entertainment and lots of good food. If you are in need of babysitting for the party, please call Nancy Tyson at 344-2064, we'd like to get an idea of how many kids will be there. Also, for you interior park people, if you need accommodations for that night please contact Judy Jensen at 344-2031.

Want to help? Call Judy 344-2031 or Sonya 344-2471.

Here are easy ways you can help:

Want to bring a dessert to share?

Too many turkeys? If any of you super shoppers find yourself with more turkeys than you need, give one to us!

Get on one of the committees: Food, Setup, Clean Up, Decorations, Entertainment



If you believe you are a member of YFEA but have not received your 1999 membership card, please contact Montana Lindstrom in the Finance office at 344-2057. She will provide you with a card that's good for the remainder of the year.



MAMMOTH CLINIC CHRISTMAS OPEN
HOUSE

DECEMBER 16, 1999, THURSDAY

3:00 TO 5:00pm

COME HELP US CELEBRATE!

and to 7th night!



Oh, come all ye faithful . . .

**To the CRO Christmas Party – December 16 from 3:00 - ?
Chief Ranger's Office**

Come join us for Christmas Cheer & Goodies Galore!

Mammoth General Store

Lunch Menu

Served Daily 11 a.m. - 1 p.m.

Available Every Day*

Bar-B-Que Sandwich	\$ 3.75
Large Hot Dog	2.75
Large Chili Dog	3.50
Bowl of Chili	2.00
Bowl of Soup	2.00
Frito Pie	2.00

*Only Soup & Chili are available
on Saturday & Sunday

Weekday Specials

Monday	
Gyros Sandwich	\$ 3.50

Tuesday	
Taco (Soft or Hard Shell)	1.75

Wednesday	
B.L.T. Sandwich	3.50

Thursday	
Burrito Plate	3.50

Friday	
Fiesta Salad	3.25

Hot Drinks

Coffee	- Reg.	\$.80
	- Large	1.10

Coffee in your Thermos		
	- Pint	1.39
	- Quart	1.69
	- 2 Qt.	1.99

Hot Tea		.75
---------	--	-----

Hot Apple Cider		.85
-----------------	--	-----

Hot Chocolate		
	- Small	.85
	- Large	1.25

Hot Cappuccino		
	- Small	.85
	- Large	1.25

Soup of the Day

Monday	Tomato Florentine
---------------	-------------------

Tuesday	Cream of Broccoli
----------------	-------------------

Wednesday	Cream of Potato
------------------	-----------------

Thursday	Corn Chowder
-----------------	--------------

Friday	Beef Stew
---------------	-----------

PHONE ORDERS ACCEPTED - 344-7702

Our store will be Closed Sundays ONLY from 11/14 through 12/26
We will be open 9 a.m.-6 p.m. the other 6 days of the week

Revised 11/4/99

Electric Peak Arts Council

presents its

2000 Concert Series

Brain Waves, January 13 – Comedy Improv

Vigilante Theater, March 4 – “Wuf”

Drum Brothers, May 17 – Percussion Instrumental

Performances will be in Mammoth or Gardiner, times will be announced

Series Ticket Prices

Family - \$60, Couple - \$40, Single - \$20

Tickets at the door - \$10/individual

To order tickets, call Christie Cote (344-7339), Dayna McClure (848-7291),
Liz Cleveland (848-7052) or Sue Vissage (848-2320)

Wilderness Medicine Institute

- WFR certification is the current standard for outdoor leaders and guides.
- WMI's certification is universally recognized by programs including NOLS and Outward Bound.
- 80-hour curriculum.



Wilderness First Responder

a medical education course

**Yellowstone Association
Institute**

Yellowstone National Park

January 2-11, 2000

307-344-2294

- This hands-on program emphasizes principles of treatment and decision-making guidelines, not the memorization of lists.
- National recertification program.
- www.wildernessmed.com