



# The "New Deal" at Tumacácori National Monument



**Tumacácori National Historical Park**

Text by Nicholas J. Bleser

Anita Badertscher

Monthly report data compiled by

Donald T. Garate

Cover photo: “CCC boys” planting trees in the Tumacácori  
visitor center courtyard garden 1939

Edited and formatted by Anita Badertscher July 2012

*Revised 8/8/12*

## Table of Contents

Introduction .....	2
Mission, Ruin, Monument, Park .....	3
National Park Service .....	4
The Great Depression .....	5
New Deal Agencies .....	6
CCC .....	6
CWA .....	10
ECW .....	12
EEP .....	12
FERA .....	12
HABS .....	13
NYA.....	14
PWA.....	15
SERA.....	18
WPA.....	18
The Berkeley Museum Laboratories.....	19
The Tumacácori Museum Exhibits.....	21



*CCC (Civilian Conservation Corps) Camp in Rocky Mountain National Park, Colorado 1933*

## **Introduction**

The impact of the 1930s “New Deal” era on our public lands was, and continues to be, immense. It seems that everywhere you look there are trails, roads, buildings, signs, walls, furniture, museum exhibits, and campgrounds created by the CCC, WPA, and other depression-era relief agencies still in use today. Hundreds of National Park Service sites benefit from this legacy, including Tumacácori National Historical Park.

## Mission ♦ Ruin ♦ Monument ♦ Park

The ruin of the San José de Tumacácori mission church was first established as a National Monument on September 15, 1908 by executive order of President Theodore Roosevelt. On August 6, 1990 the monument was re-designated Tumacácori National Historical Park by an act of Congress which also added the ruins of missions Los Santos Ángeles de Guevavi and San Cayetano de Calabazas to the park.



*Tumacácori mission church 1919*

During its early years, the monument was nominally taken care of by the nearest federal agency, the Department of Agriculture's United States Forest Service, since the Department of Interior's National Park Service (NPS) didn't exist until 1916. Two years after the establishment of the NPS, Frank Pinkley was named the first custodian for Tumacácori, in addition to his duties as custodian of Casa Grande National Monument in Coolidge, Arizona. Pinkley

immediately began cleanup and stabilization work, soliciting enough funds from local organizations to about double the amount allocated by the government. Major work was done in 1920-1921 but it was not until the 1930s that the park began to take on its present appearance.



*Tumacácori mission church 1928*

## **National Park Service**

Until the mid-1940s the person in charge of a park service area had the title of “custodian,” now it’s “superintendent.” During the New Deal period of Tumacácori National Monument’s history, four custodians were involved.

**Frank Pinkley** (1881-1940) was a farm boy from Missouri whose doctor ordered him to go to Arizona for six months in 1900 to recuperate from a mild case of tuberculosis. If he had a round-trip ticket he never used it and a year later he accepted a government job as caretaker of Casa Grande ruin, where he lived in a tent and dug his own well. At the time of his death in 1940 he was the general manager of twenty-seven national monuments in four states, and was affectionately known as “The Boss.” Each custodian of the

areas he administered submitted a monthly report and it is from these reports that the sequence of programs of the New Deal at Tumacácori is drawn.

**Johnwill Faris** (1903-1993) served briefly as custodian from April 1 to September 30, 1929, before any of the New Deal projects were born. He transferred to Aztec Ruins National Monument in New Mexico where he was the custodian until December 1, 1936.

**George L. Boundey** (1882-1969) arrived the next day, October 1, 1929, and served as custodian until April 30, 1936. He and Johnwill Faris traded places; Boundey had been at Aztec Ruins since April 1, 1927. While at Tumacácori he supervised the construction of pre-New Deal support facilities such as the public restrooms, two employee residences, and a building for park maintenance. These buildings are still in use.

**Louis R. Caywood** (1906-1997) was in charge of Tumacácori from May 1, 1936 until June 27, 1944. An archaeologist with a master's degree from the University of Arizona, during his lifetime Caywood worked on projects ranging from Arizona, Washington and Virginia to Alaska, Hawaii and Canada. He began in 1933 at Tuzigoot (which became a National Monument in 1940) using FERA and CWA funds and laborers for stabilization of the 13<sup>th</sup> century ruin. In 1934, he began his thirty-five year career with the National Park Service.

## **The Great Depression**

In 1929, the United States and soon the entire world entered a bleak period of history known as The Great

Depression. Stunned and bewildered by events beyond their control but armed with the world's most powerful weapon, the ballot, citizens fought back and elected Franklin D. Roosevelt ("FDR") as president to lead them on a return to normalcy.

Following his inauguration on March 4, 1933 and aided by his wife Eleanor and a cooperative Congress, FDR began the creation of an "alphabet soup" of agencies under the Federal Emergency Relief Administration (FERA), designed to put people back to work. With 25% of workers unable to find a job and even more forced to accept lower wages or part-time work, Roosevelt believed a paycheck to be superior to a handout.

Many areas in the National Park Service benefited from Roosevelt's "New Deal" programs, including Tumacácori National Monument. The employment programs came at an opportune time, providing funds and workers to create visitor facilities following Pinkley's stabilization of the ruins.

During Roosevelt's administration around one hundred offices were created, some by Congress and others by executive order of the President. We will focus on those which were in some way directly involved with Tumacácori National Monument.

## **New Deal agencies**

### **◆ CCC - Civilian Conservation Corps**

The CCC is one of the most well-remembered and highly regarded programs of the New Deal. Responding to the President's pleas, Congress passed and FDR signed the Emergency Conservation Work Act, from which came the

CCC. Only 34 days after FDR'S inauguration the first enrollees were inducted, on April 7, 1933.

The CCC employed young, unmarried men, ages 17 to 23, in manual labor work on projects related to conservation and development of natural resources in federal, state, and local government-owned lands. The "CCC boys" were housed in camps. They were paid \$30 a month, \$25 of which was sent directly home to their parents.

Much has been written about the Civilian Conservation Corps; here's a summary of what they accomplished during the less than ten years of their existence:

- ◆ 3,470 fire towers and 97,000 miles of fire roads were constructed.
- ◆ 4,235,000 man-days were spent fighting fires and over three billion trees were planted.
- ◆ Five hundred camps under the direction of the Soil Conservation Service did erosion control on more than twenty million acres.
- ◆ 83 camps in 15 western states worked 7,153,000 man-days on 45 other conservation projects including range protection for grazing, wildlife habitat protection, fish restocking, stream improvement, and building small dams for water conservation.
- ◆ Millions of man-days were spent on emergency flood and other storm relief.
- ◆ Drainage systems were constructed on 84,400,000 acres of agricultural land by 46 camps under the direction of the U.S. Bureau of Agricultural Engineering, much of the work being done by Native American crews.

- ◆ Recreational facilities were developed in federal, state, county and municipal parks.

### The CCC at Tumacácori:

Camp NM-1-N, located at Bandelier National Monument in New Mexico, made important contributions to Tumacácori's visitor center. In 1936, they carved signs for the restrooms, and in 1937 made and carved the visitor



*Tumacácori museum front door  
at Bandelier National Monument,  
1937*

center front doors. The doors, still in use, were designed based on the doors of the San Ignacio mission church in Sonora, Mexico. The camp later made furniture for the lobby – a cabinet and a wooden bench with a leather seat pad. The bench is still in use today in the visitor center lobby.

The work of Camp SP-11-A, based at Saguaro National Monument (now Saguaro National Park) is still enjoyed every day by visitors to Tumacácori. It was the young men of this

camp who, in 1939 and 1940, installed the visitor center courtyard garden – planting trees, laying out and installing the brick paths, creating the fountain and the adobe benches still in use today. Custodian Louis Caywood recorded in his March, 1939 monthly report:

“On March 13 Landscape Architect Charles Carter arrived with 16 CCC boys to begin work on the patio garden. Several shrubs and trees were first removed for the patio area. Part of the wall was removed to facilitate movement of trucks into the area. To date about one third of the filling and grading has been done. Holes were dug for four olive trees, and one olive tree has been brought from Phoenix and planted. It is doing well, thanks.”



*CCC worker installing visitor center courtyard garden walkway, 1940*

In 1940, the Saguaro crew finished work in the garden and went on to install the flagpole on the west side of the parking area and lay the brick paths and curbs leading to the visitor center door. (The brick retaining walls at the doorway were a 1950 addition.)

**CCC camps assisting in Tumacácori projects included:**

- ◆ Camp NM-1-N, Bandelier National Monument, New Mexico, November 6, 1933 to 1940

- ◆ Camp SP-11-A, Saguaro National Monument at Tanque Verde, Tucson, Arizona, 1935
- ◆ Camp NM-2-A Bonita Canyon, Chiricahua National Monument, Arizona, 1934
- ◆ Camp SP-1-A, later called MA-1, Randolph Metropolitan Park, Tucson, Arizona, 1939
- ◆ Camp F-64-A, Peña Blanca Lake, near Nogales, Arizona, 1933-1942 (Enrollees were mainly from Arizona, New Mexico, Texas and Oklahoma.)
- ◆ Camp F-30-A, Madera Canyon in the Santa Rita Mountains east of Tumacácori, 1935-1938

California CCC workers were involved in the creation of the Tumacácori museum exhibits at the NPS Western Museum shops in Berkeley, California.

(See also Berkeley Museum Laboratories, page 19.)

### ◆ **CWA - Civil Works Administration**

Unveiled on November 8, 1933 as part of the Federal Emergency Relief Administration, the intent was to provide temporary winter construction work. It ended on March 31 of the next year after employing four million people at a cost of \$200 million dollars a month for five months.

#### **The CWA at Tumacácori:**

Before the construction of the adobe wall along the north, west, and south sides of the original monument property, cars could drive right up to the ruins. The highway connecting Tucson to Nogales, replaced in 1979 by

Interstate 19, ran directly beside the church along the route of the present Frontage Road.

In 1934, construction of the boundary wall was begun by local men hired under the CWA, causing visitors to enter the park through the visitor center. With the discontinuation of the CWA at the end of March, work continued under the FERA (Federal Emergency Relief Administration).

Custodian George Boundey recorded in the February monthly report, “Men of the CWA program are working 15 hours a week. The front adobe wall is nearly completed and extensive repairs have been made to the mission building.”

In June, with work continuing under FERA, Boundey wrote:

“We are working about 100 men here in shifts of 20 each. Each shift works 3 days in the first half of the month and 3 days in the latter half. They are paid \$21.00 for their 6 days labor, which is more money than most of them have earned in years. They are making adobe blocks and hope to finish the wall



entirely around the monument. We have to furnish everything but the labor.”

### ◆ **ECW - Emergency Conservation Work**

Established as an independent agency by executive order on April 5, 1933 under an authority of the Emergency Conservation Work Act passed on March 31, the ECW was among the many agencies employed at the NPS Western Museum shops in Berkeley, California, creators of Tumacácori's original museum exhibits.

(**The ECW at Tumacácori:** see Berkeley Museum Laboratories, page 19.)

### ◆ **EEP - Emergency Education Program**

The EEP allocated funds to the states for forty teacher training centers, held on college campuses in twenty-seven states beginning in the summer of 1934.

(**The EEP at Tumacácori:** see Berkeley Museum Laboratories, page 19.)

### ◆ **FERA - Federal Emergency Relief Administration**

Initially established as the Emergency Relief Administration by President Hoover in 1932 to loan money to states for relief programs, Roosevelt asked Congress to authorize the FERA for the same purpose. This was done under the Federal Emergency Relief Act passed during FDR's first hundred days. Direct aid given to the states was distributed through local agencies to those most hurt by the Depression, and within two hours of its birth the agency gave out five million dollars. During its roughly two and a

half years of existence it provided work for over twenty million people at a cost of \$3.1 billion. It was replaced in 1935 by the Social Security Administration (SSA) and the Works Progress Administration (WPA).

### **The FERA at Tumacácori:**

Local men hired under the FERA continued to work on the boundary wall after the dissolution of the CWA. Work stopped temporarily in October, 1934, when funds ran out. Boundey recorded in his monthly report:

“The Nogales office is very anxious to have us go on with the work as they say this is the only project where there has never been a complaint from any worker in regard to time and money earned or quality of work furnished.”

With renewed funding, FERA workers completed the boundary wall in 1934 then went on to make additional adobes for repair and construction, and to assist with the 1934 - 1935 excavation of the *convento* ruins, the area to the east of the church, under the direction of archaeologist Paul Beaubien. Beaubien supervised excavations designed to locate subsurface walls of structures associated with the visible remains. More than seventy features were identified before funding was exhausted, and every one had been damaged by treasure hunters.

(See also Berkeley Museum Laboratories, page 19.)

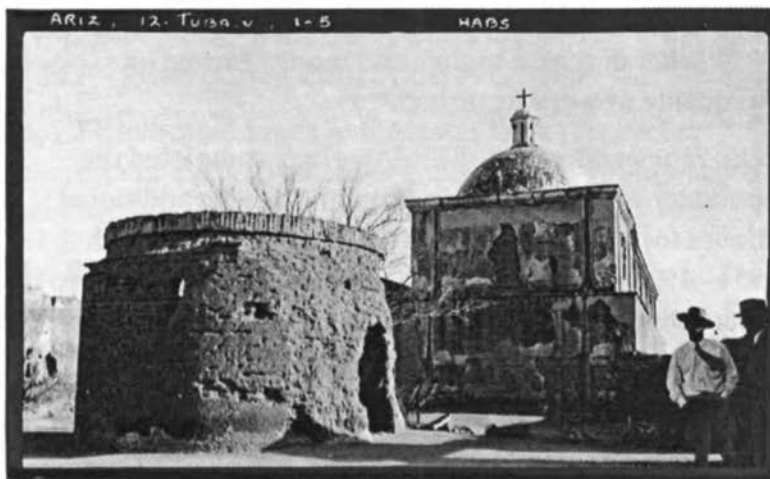
### **◆ HABS - Historic American Buildings Survey**

With funding from FERA the National Park Service launched HABS on December 12, 1933. Together with the

Historic American Engineering Record (HAER, established 1969) and the Historic American Landscape Survey (HALS, established 2000) they continue to document significant architectural and engineering features throughout the United States, with the permanent image and document collection housed at the Library of Congress.

### **HABS at Tumacácori:**

A HABS team visited Tumacácori National Monument in 1937. Most of the photographs during their visit were taken by Frederick D. Nichols who did extensive photography for HABS.



### **◆ NYA - National Youth Administration**

Eleanor Roosevelt was directly responsible for the establishment of the NYA, which operated from 1935 to 1943 as part of the WPA and offered work training to youths 16 to 25. It also provided courses in reading, writing, and arithmetic, and helped students stay in school with

work-study programs. It helped over 4.5 million young people get work, vocational training or a better education. Unlike other federal agencies and programs, NYA was inclusive, promoting equality and fairness for women and men and specifically rejecting racial discrimination. Everyone was paid the same wages and received the same benefits. The head of the Texas division at one time was a fellow named Lyndon B. Johnson.

### **The NYA at Tumacácori:**

Local youths were hired in 1938 to help complete the installation of the new visitor center courtyard garden. In 1940, NYA workers cleaned and prepared for conservation the many pot shards found during the creation of the garden. NYA workers also typed up information on cards for the park's "fact files."

### **◆ PWA - Public Works Administration**

Created on June 16, 1933, several billion dollars were budgeted for public works in an effort to provide work and revive industry. Sometimes confused with the WPA (Works Progress Administration), workers did not have to be on relief. Before being abolished in 1941, the PWA completed 34,000 projects including seventy percent of the new schools built and one third of the hospitals. They also built electricity-generating dams, roads, airports, city halls, police stations, aircraft carriers, submarines, the San Francisco Bay bridge, Grand Coulee Dam, Washington National Airport and the highway linking the Florida keys to the mainland, among other projects. Public Works funds were also allocated by the Secretary of the Interior for construction of

the visitor center and museum building at Tumacácori National Monument.

### **The PWA at Tumacácori:**

The design for Tumacácori's visitor center evolved from a 1935 expedition to thirteen Spanish colonial mission sites in Sonora and two in Arizona, at a time of political and social unrest in Mexico. During this period of anticlerical activity all the churches had been closed and their furnishings removed, hidden by local parishioners or destroyed. The trip was funded and authorized by the National Emergency Council, a branch of the PWA which coordinated work among federal agencies.

Six intrepid NPS professionals made the trip: Arthur Woodward, archaeologist and journalist; Scofield DeLong and Leffler B. Miller, architects; George A. Grant, photographer; Robert H. Rose, naturalist; and J.H. Tovrea, engineer. The report was republished by Buford Pickens in 1993 as *The Missions of Northern Sonora, a 1935 Field Documentation* (University of Arizona Press).

Various architectural features of the churches are visible in the construction of the



visitor center building. The front doors are copied from those at San Ignacio and the shell design from Cocospera (the shell motif is found in all Franciscan colonial churches for it symbolizes the patron saint of Spain, Santiago de Compostela). The ceiling in the lobby of the visitor center is patterned after the one in the church at Oquitoa, the arcade after that at Caborca. While construction of the visitor center and museum was going on the exhibits for the museum were being designed and built in Berkeley, California at the Western Museum Laboratories by artists, craftsmen and designers employed under many New Deal programs.

Louis Caywood states in his June 1937 year-end report:

“The Secretary of the Interior approved an allotment of Public Works funds for the new Tumacácori museum in August, 1936; the contract for construction was let to the M. M. Sundt Construction Company (of Tucson) in June. It is expected that the building will be finished early in 1938. Western Museum Laboratories of the National Park Service in Berkeley, California, had prepared 60 percent of museum exhibits at the end of the fiscal year. Plans had been drawn up by the Museum Division with some help by the Southwestern Monuments office. Exhibits will be ready for installation when the building is finished, it is hoped.”

Work on the museum began in 1937 while exhibit preparation was underway at the Western Museum labs. Lorenzo Moffett and Paul Rockwood, PWA exhibit

builders from the Berkeley labs, spent four days at the monument in February 1937 making paintings, drawings, photographs, and color notes for details in the dioramas being prepared in California.

Several plans for the building had been proposed and one set approved by General Superintendent “Boss” Pinkley. Construction by the M. M. Sundt Company began in August, 1937 despite a heavy rainstorm that ruined the first batch of adobe bricks. At the same time a contract was let with Citizens Utility Company of Nogales and electricity finally reached the park. Work on the visitor center building was completed in December, 1937 at a total cost of \$28,992.91. Exhibit installation followed in 1938. With all installation complete, the museum was dedicated in April 1939.

(See also Berkeley Museum Laboratories, page 19.)

### ◆ **SERA - State Emergency Relief Administration**

This California agency was established in 1933 and renamed the State Relief Administration (SRA) two years later. It distributed state and federal funds and administered unemployment relief in California.

(**The SERA at Tumacácori:** see Berkeley Museum Laboratories, page 19.)

### ◆ **WPA - Works Progress Administration**

One of the largest, best remembered, most praised and often reviled organizations of the New Deal, the WPA was established by executive order under the Emergency Relief Appropriation Act of 1935, and subsequently restructured

when it was assigned to the Federal Works Agency in 1939. During its short life it employed over eight and a half million people at the low average wage of \$41.57 a month. It was designed to not compete with private industry, but to stimulate local economies with the construction of roads, bridges, public buildings, public parks, airports and such things as bookbinding, caring for the elderly, school lunch programs, recreation and nursery school work. One part of the WPA supported art, theater, music and writers' projects, bringing more art to more Americans than ever before or since. The National Foundation for the Arts and the National Endowment for the Humanities are products of this branch of the WPA.

(**The WPA at Tumacácori:** see Berkeley Museum Laboratories)

## **The Berkeley museum laboratories - 1935**

The Western Museum shops in Berkeley, California employed artists and craftsmen under many New Deal programs to design and create museum exhibits. The laboratories were operated as a joint project between the National Park Service and the University of California. A report by Dale S. King, staff member of Southwestern National Monuments headquarters managed by Frank Pinkley gives us an idea of the complexity of the operation:

“Workers at the Laboratories fall under six classifications: CCC, ECW, PWA, SERA, FERA, and EEP. The CCC boys and the ECW supervisors (although perforce too scanty) provide the backbone of the organization because they are more or less permanent and can be depended upon

to finish a project once started. A small group of PWA artists and sculptors do remarkable work, but PWA money is very scarce, and this group is necessarily very small. Some good results can be obtained from State ERA and Federal ERA workers, but each one usually is assigned for only three to six or seven days each month, which means that they must be used on 'hack' projects, which can be started and stopped with impunity, else the work will suffer. The EEP (Emergency Education Program) workers number only six, and have to be used in a teaching capacity - instructing workers in painting, casting, modeling, etc.

Altogether there are about 200 persons working at the laboratories. You can imagine the problems arising - payrolls, supervision, trying to select workers according to their special abilities, if any; purchasing the widely varied list of materials needed; keeping paper work up, particularly when half of the workers change every few days."



Work was done in three different buildings on and near the Berkeley campus: Hilgard Hall on the campus, the ECW Laboratory on College Avenue, and the rented Federal Land Bank Building just off campus. Located on Fulton Street next to Edwards Field in Berkeley, it was sometimes referred to as the Fulton Laboratory. Carpentry work and casting were done at the ECW Laboratory where the labor force consisted of Civilian Conservation Corps (CCC) workers. Public Works Administration (PWA), and Works Progress Administration (WPA) workers also provided labor for the exhibit projects.

## **The Tumacácori Museum Exhibits**

All of Tumacácori National Monument's original museum exhibits were made at the Western Museum Laboratories. The museum has had two major revisions, in 1972 and 2009, since its official dedication in April 1939. Some of the original exhibits were sent elsewhere, such as the mining exhibit which was sent to the Bisbee Mining and Historical Museum, while others were simply replaced. Three that have survived include the outstanding dioramas of Father Kino, Tubutama during the Pima revolt, and mass at Tumacácori. The small bronze equestrian statue of Father Kino has also remained in its niche in the passageway between the patio garden and the model room overlooking the church.

From *Museum Curatorship in the National Park Service 1904-1982*, by Ralph H. Lewis, 1993:

“In the 1937 fiscal year Public Works allotted \$50,000 to the Park Service for an



*Mass diorama showing the church interior in the 1820s*

administration/museum building at Tumacácori National Monument. After a brief altercation between Burns and Hall, [directors of the eastern and western branches of NPS museum laboratories] the exhibit planning and preparation responsibility came to rest at Berkeley. PWA curator Russell Hastings and Captain D.W. Page prepared the exhibit plan, approved by the director in January but considerably modified as research and preparation continued.

The exhibits included three dioramas that engaged the skillful hands of Bartlett Frost as sculptor. One group, depicting a service in the mission church, was enhanced by appropriate recorded music and a touch of animation that made the altar candles appear lighted. The combined effect moved some

devout visitors to join the miniature worshipers in kneeling before the altar.

Collaboration between the architects and museum planners led to an arched window in the museum framing a striking view of the mission.

The introductory display, an electric map tracing Spanish missionary journeys, was less successful. After a WPA craftsman struggled with it for about three years, it finally went to the park with a thick maintenance and operation manual. As Burns doubtless feared, it failed to work satisfactorily.”

Exhibits and cases for the new museum were built at the labs in 1936 and 1937. In January 1938, two and a half tons of museum cases arrived by train in Nogales and were driven to Tumacácori in two trucks. Exhibits arrived on May 28 and were installed by Berkeley museum technicians Bert Floyd and Lorenzo Moffett. Custodian Louis Caywood commented:

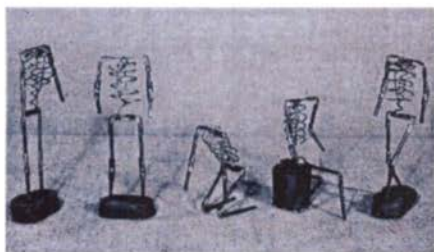
“Moffett and Floyd remained here until June 8 on installation. Hours seeming meant nothing to them, as they were often working from 7:00 a.m. until 7:00 p.m., including Sundays.”

Much of the artwork and painting at the Laboratory was done by May Blos, Mary Healy, Paul Rockwood, and Herbert Collins of the PWA. Rockwood painted the intricately realistic background in the Kino Diorama. Most of the sculpting and painting of the figures in the dioramas were done by Bart Frost, Natasha Smith, and Lorenzo Moffet (PWA), and Leonard Rhodes and Harold Carter (CCC).

Eugene Morahan (1869-1949) in 1936 sculpted the bronze equestrian Kino statue that stands in the museum breezeway. Born in Brooklyn, Morahan studied with Augustus Saint-Gaudens and lived in Santa Monica, California from 1930 until his death. Included in his many works are the Soldiers and Sailors World War I monument in Brooklyn dedicated in 1921, bronze bas-reliefs on two faces of an 18-foot tall pink granite stele. He also sculpted the 18-foot statue of St. Monica in Santa Monica in 1934, a project funded by the PWA.



The dioramas of Father Kino visiting the Santa Cruz valley, the Pima Rebellion of 1751 in Tubutama, and the interior of the Tumacácori church as it might have appeared during Mass in the 1820s contain incredibly detailed figures. The figures were constructed on a metal skeleton framework. Bodies and features were then





sculpted in wax and painted, and the figures were given fabric clothing.

Arthur Woodward, NPS historian and archeologist and member of the 1935 PWA architectural expedition, visited the park in 1977 to attend the fortieth birthday celebration for the museum. He stood and

examined the Kino diorama for quite a while. Finally he turned and said, "I researched the clothing he's wearing and it's authentic, right down to his underwear."





Bartlett Frost used himself as the model for the most prominent figure in the mass diorama, the soldier kneeling in the foreground.

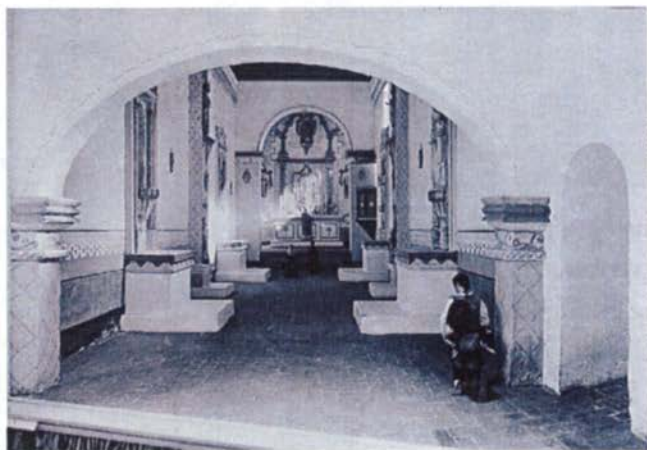
The appearance of lighted candles was achieved by small light bulbs beneath the altars. Balanced on a pinpoint just above the bulbs were flat, circular metal pieces cut like the

vanes on a windmill so that the heat from the bulb caused them to turn. This made the candles flicker realistically but over time they gradually wore out and were not replaced.

The Rev. Celestine Chinn, O.F.M., served for many years at San Xavier del Bac, arriving there in 1949. He was a noted expert on religious iconography and on one of his visits to

Tumacácori in the late 1970s was asked his opinion of the religious art portrayed in the mass diorama. “It’s all accurate,” he said, “except for that painting in the baptistery. It wasn’t done until 1875.”

One other error is the portrayal of the floor as being made of brick. Historically, it had a smooth, red plaster surface.





Originally, the figures in the diorama showing the attack on Tubutama during the Pima Revolt of 1751 were crowned with real hair, which was black except for two of them. In real life Father Sedelmayr was a red-headed Austrian and so he was given red hair, as was the young Pima boy he's shielding. When the deteriorating hair was replaced in 1972, everyone was given black, museum artists' humor and bureaucratic supervision apparently having changed during the interim.

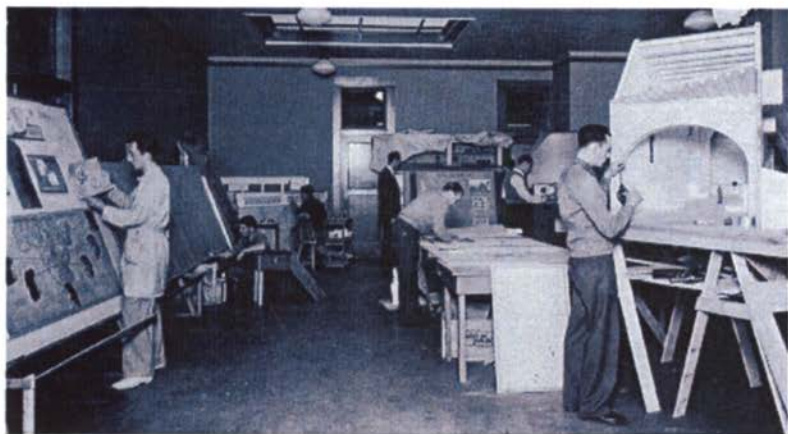


Most of the work done at Tumacácori National Historical Park with various New Deal project funding is still visible and in daily use. The boundary walls, visitor center and museum building, patio garden with its walks and fountain, some of the plantings, and the dioramas in the museum are all still seen and used daily by visitors from all over the world.



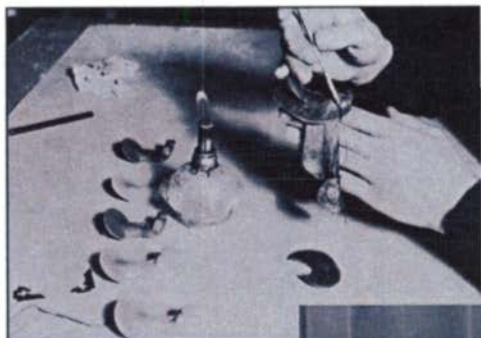
*Natasha Smith (PWA) sculpting Kino's horse*

◆ Additional Images: Tumacácori Diorama Creation



Kino Diorama





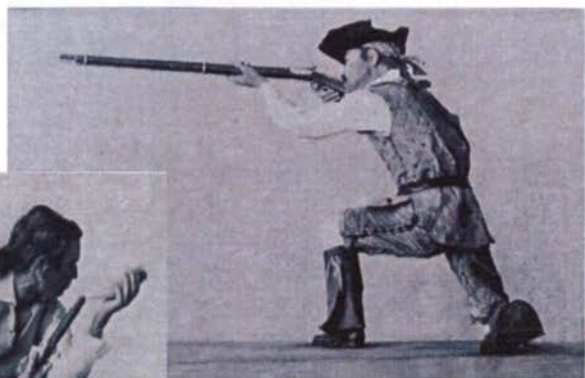
*Making Kino's saddle*

*Lorenzo Moffett (PWA)  
painting Kino's horse*



*Paul Rockwood (PWA)  
painting backdrop for  
Kino diorama*

## Tubutama Pima Rebellion Diorama





**Tumacácori  
Mass Diorama**









