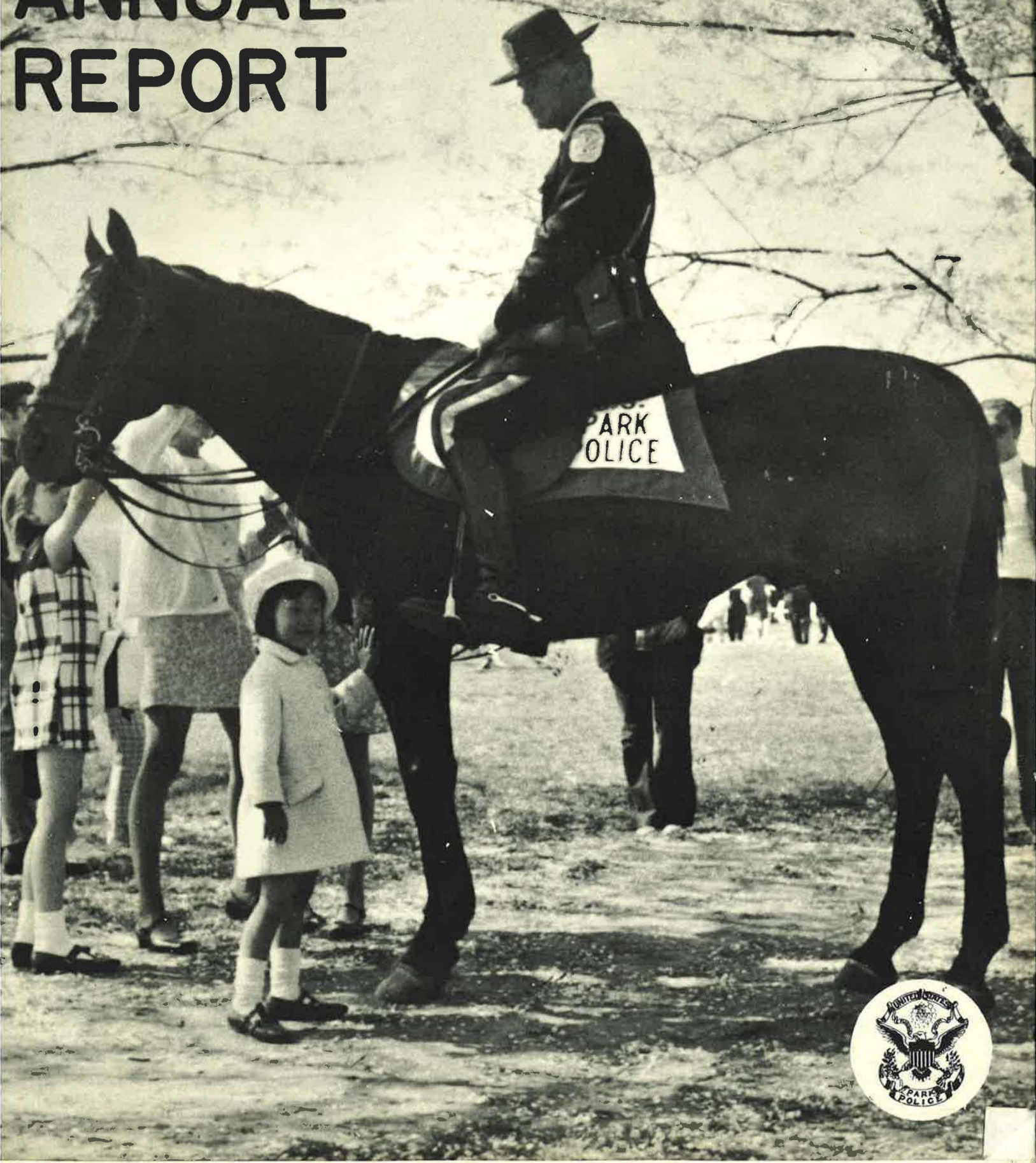


1969 ANNUAL REPORT



PHOTOGRAPHS FURNISHED FROM THE FILES OF:
NATIONAL CAPITAL PARKS & U. S. PARK POLICE



HIGHLIGHTS

	<u>1968</u>	<u>1969</u>	<u>INCREASE</u>	<u>DECREASE</u>
TOTAL ALL ARRESTS -----	40,902	60,165	19,263	
Adults Arrested -----	40,206	59,402	19,196	
Juveniles Apprehended -----	696	763	67	
TOTAL ARRESTS FOR PART I CLASSES --	277	394	117	
Adults Arrested -----	165	231	66	
Juveniles Apprehended -----	112	163	51	
TOTAL ARRESTS FOR PART II CLASSES -	2,603	1,821		782
Adults Arrested -----	2,084	1,290		794
Juveniles Apprehended -----	519	531	12	
TOTAL TRAFFIC ARRESTS -----	38,022	57,950	19,928	
Adults Arrested -----	37,957	57,881	19,924	
Juveniles Apprehended -----	65	69	4	
TOTAL MAJOR OFFENSES REPORTED -----	1,336	1,408	72	
Deduct Offenses Unfounded -----	62	40		22
ACTUAL MAJOR OFFENSES-----	1,274	1,368	94	
TOTAL MAJOR OFFENSES SOLVED -----	223	269	46	
AUTOMOBILES STOLEN -----	63	54		9
AUTOMOBILES RECOVERED -----	45	47	2	
AUTOMOBILES RECOVERED FOR OTHER JURISDICTIONS -----	223	224	1	
TOTAL TRAFFIC ACCIDENTS -----	3,053	3,357	304	
Fatal Accidents -----	27	26		1
Injury Accidents -----	657	685	28	
Property Damage Only Accidents -	2,369	2,646	277	
TOTAL TRAFFIC DEATHS -----	32	31		1
Non Pedestrian -----	30	30		
Pedestrian -----	2	1		1
TOTAL TRAFFIC INJURIES -----	1,020	1,114	94	
Non Pedestrian -----	995	1,090	95	
Pedestrian -----	25	24		1
*PROPERTY STOLEN -----	\$ 79,308	\$ 141,605	\$ 62,297	
PROPERTY RECOVERED -----	5,892	4,412		\$ 1,480
Percent Recovered -----	7%	3%		
TOTAL FINES AND FORFEITURES -----	\$ 228,676	\$ 289,403	\$ 60,727	
District of Columbia -----	55,627	83,196	27,569	
Maryland -----	115,371	165,307	49,936	
Virginia -----	57,678	40,900		\$16,778

*AMOUNT OF PROPERTY STOLEN DOES NOT INCLUDE AUTOMOBILES.



United States Department of the Interior

NATIONAL PARK SERVICE
OFFICE OF NATIONAL CAPITAL PARKS
HEADQUARTERS, UNITED STATES PARK POLICE
1100 OHIO DRIVE, S. W.
WASHINGTON, D. C. 20242

IN REPLY REFER TO:

March 20, 1970

Memorandum

To: General Superintendent, Office of National Capital Parks
From: Chief, U. S. Park Police
Subject: Annual Report for calendar year 1969

In our modern society, an effective police force is tremendously more important than it was in former times. Today, police officers occupy the front line in society's day-to-day effort to protect its citizens from the fear, suffering and property loss produced by crime and traffic accidents. The freedom of our citizens to seek wholesome enjoyment in our park areas and safe travel on our parkways - depends to a great extent on the effectiveness of the varied activities of the police. This report is a compendium of the activities of the Park Police during the 1969 calendar year.

The magnitude of our mission is reflected in the number of citizens we serve. It is estimated that more than 23 million persons visited the park areas within the National Capital Parks during 1969. This visitation represents an increase of over 3 million when compared to 1968. Attendance at special events reached an all time high with 2,962,056 citizens attending more than 1,183 such events.

In spite of the unpleasantness of many of these special events, some of which were protest affairs, the members of the Force displayed calm and professional demeanor. Many commendatory expressions from the grateful public reflect a favorable compliment to our training efforts.

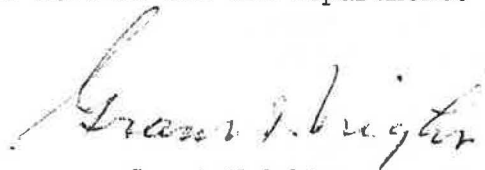
The U. S. Park Police handled more than 27,000 service calls, traffic incidents, and criminal incidents within the National Capital Parks during 1969. These activities represent a 25% increase over 1968 and surpass all previous records in the 175 year history of this Force.

We are pleased to report that the major portion of this increase was related to minor crimes and service incidents. The rise in major offenses over 1968 was just slightly over 7 per cent. The rise in major crimes rose 17% nationally. Of the 1,368 major offenses reported only 29% were acts of violence against persons. Robbery decreased 17% with 191 offenses reported this year as opposed to 230 in 1968. Though we experienced three cases of criminal homicide, assaults decreased 6% with 156 assault cases recorded compared to 165 in 1968. Rape increased 18% with 46 cases recorded versus 39 in 1968.

Part II offenses increased 19% over 1968 with a total of 4,798 offenses. Declines in sex offenses (-56%) and weapon offenses (-23%) were the only decreases noted in the Part II offense category. Disorderly conduct and drunkenness were the two leading Part II offenses increasing 19% and 71% respectively. Vandalism showed only a slight increase of 4%.

The overall number of motor vehicle accidents occurring within the Park System in 1969 increased 10% over 1968 with a correlative increase in vehicular traffic. Of the 3,357 motor vehicle accidents investigated by the U. S. Park Police in 1969, 685 involved personal injury and 26 involved one or more fatalities. A total of 1,114 persons sustained injuries and 31 were killed.

Again, we acknowledge with sincere appreciation the exceptional direction and support we have received from your office, and all of the officials in the National Capital Parks, the Service and the Department.



Grant Wright

COMMENDABLE SERVICE AWARDS

Private Frank B. Coggins

Upon retirement after more than 12 years of service with the Federal Government, joined the U. S. Park Police on May 13, 1962. He served in various assignments and held the position of Motorcycle Officer when he retired on January 31, 1969.

Private Robert G. Glenn

Upon retirement after more than 26 years of service with the Federal Government, joined the U. S. Park Police on March 3, 1943. He served in various assignments and held the position of Motorcycle Officer when he retired on July 31, 1969.

Private Harold L. Hayden

Upon retirement after more than 23 years of service with the Federal Government, joined the U. S. Park Police on September 1, 1949. He served in various assignments and held the position of Motorcycle Officer when he retired on May 31, 1969.

Private James W. Hutchinson

Upon retirement after more than 10 years of service with the Federal Government, joined the U. S. Park Police on July 28, 1963. He served in various assignments and held the position of Assistant Desk Sergeant when he retired on January 31, 1969.

Private Homer L. Sudduth, Jr.

Upon retirement after more than 20 years of service with the Federal Government, joined the U. S. Park Police on February 8, 1956. He served in various assignments and held the position of Horse Mounted Officer when he retired on January 31, 1969.

Private Cornelious G. Vermillion

Upon retirement after more than 23 years of service with the Federal Government, joined the U. S. Park Police on November 16, 1950. He served in various assignments and held the position of Horse Mounted Officer when he retired on February 28, 1969.

Detective Charles E. Welsh

Upon retirement after more than 21 years of service with the Federal Government, joined the U. S. Park Police on November 16, 1950. He served in various assignments and held the position of Detective when he retired on January 31, 1969.

Private David J. Wolz

Upon retirement after more than 26 years of service with the Federal Government, joined the U. S. Park Police on January 16, 1950. He served in various assignments and held the position of Motorcycle Officer when he retired on January 31, 1969.



UNIT AWARD PRESENTATION

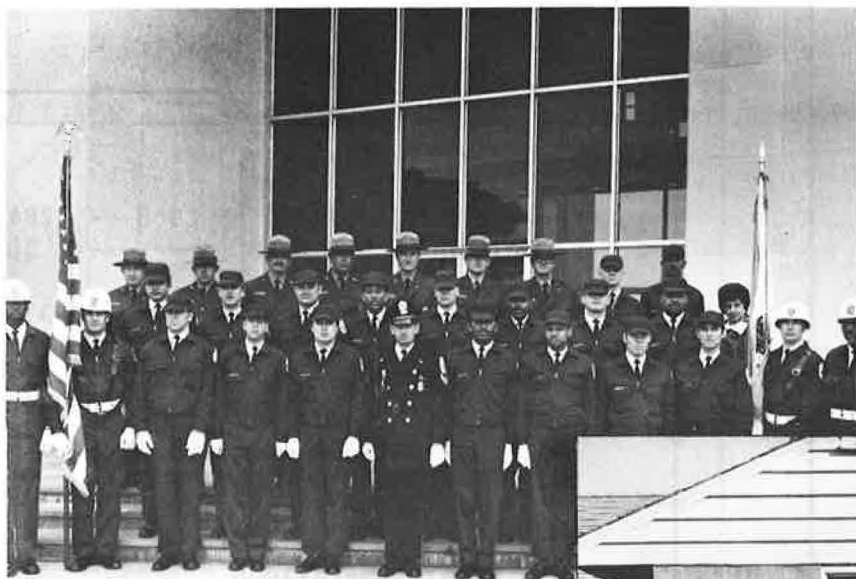


JOHN S. CROCKETT, JR
TRAFFIC OFFICER OF THE YEAR

UNITED STATES PARK POLICE TRAINING PROGRAM

TRAINING RECEIVED THROUGH:	NUMBER OF COURSES	TOTAL PARTICIPATION*	HOURS ATTENDED
courses given by U. S. Park Police--	21	1,094	61,992
other agencies (at no cost)-----	16	69	3,352
use of Force Funds-----	41	86	3,771
partial Force Funds and partial employee expense-----	21	125	5,000
use of personal funds only (employee attends on his own time)--	12	16	640
use of Law Enforcement Assistance Act, and/or G. I. Bill (employee attends on his own time) -	37	416	8,000
TOTAL-----	148	1,806	82,755

*Includes several participants who
attended more than one course.



Recruit Class of 1969
(Platoon "B")



Recruit Class of 1969
(Platoon "A")

ASSIGNMENT OF PERSONNEL, BY DIVISION

TOTAL PERSONNEL

DECEMBER 31, 1969

311 POLICEMEN - 18 GUARDS - 18 CIVILIANS

OFFICE OF THE CHIEF

8 POLICEMEN - 5 CIVILIANS

- 1 - Chief
- 1 - Deputy Chief
- 1 - Captain (Watch Commander)
- 3 - Sergeants (Liaison)
- 1 - Technician II
- 3 - Civilians
 - 2 - Secretaries
 - 1 - Safety Officer

PISTOL RANGE

- 1 - Range Officer
- 2 - Civilians
(Small Arms Repairmen)

CRIME PREVENTION DIVISION

21 POLICEMEN - 1 CIVILIAN

- 1 - Inspector (Commander)
- 1 - Captain (Assistant Commander)
- 2 - Detective Lieutenants
- 3 - Detective Sergeants
- 14 - Detectives & Plainclothesmen
- 1 - Civilian (Clerk-Typist)

SERVICES DIVISION

39 POLICEMEN - 9 CIVILIANS

- 1 - Inspector (Commander)
- 1 - Captain (Assistant Commander)
- 3 - Lieutenants
- 7 - Sergeants
- 27 - Privates
 - 10 - Technician II's
- 9 - Civilians
 - 1 - Statistical Assistant
 - 8 - Clerk-Typists

OPERATIONS DIVISION

243 POLICEMEN - 18 GUARDS - 3 CIVILIANS

- 1 - Inspector (Commander)
- 2 - Captains
- 10 - Lieutenants
- 26 - Sergeants
 - 1 - Horse Mounted
 - 4 - Motorcycle Mounted

204 - Privates

- 19 - Horse Mounted
- 23 - Motorcycle Mounted
- 5 - Technician II's
 - (3 - Dog Handlers)
 - (1 - Radar Specialist)
 - (1 - Desk Sergeant)

18 - Guards

- 3 - Civilians
 - 2 - Clerk-Typists
 - 1 - Stable Hand

CHANGES IN PERSONNEL

- 1. Present for duty end of 1968 -- 284
- 2. Recruited during 1968 ----- 50

Total to account for ----- 334

3. Separations from the force:

- (a) Voluntary resignation - 1
- (b) Retirement on pension - 21
- (c) Deaths ----- 1

Total separations ----- 23

- 4. Present for duty end of 1969 --- 311

STAFF ASSIGNMENTS

CHIEF OF POLICE

Grant Wright

DEPUTY CHIEF OF POLICE

Alfred D. Beye

DIVISION COMMANDERS

Inspector Charles C. Adams (Operations)
Inspector Roland A. Fallin (Services)
Inspector Walter R. McEwen (C. P. D.)

ASSISTANT DIVISION COMMANDERS

Captain Carroll W. Shoemaker
Captain Jerry L. Wells

OFFICER IN CHARGE PATROL BRANCH

Captain Franklin A. Arthur

OFFICER IN CHARGE TRAFFIC BRANCH

Captain Robert F. Dougherty

WATCH COMMANDER

Captain Willis L. Headlee

ASSISTANT OFFICER IN CHARGE PATROL BRANCH

Lieutenant A. Verner Conover

ASSISTANT OFFICER IN CHARGE TRAFFIC BRANCH

Lieutenant Edward A. Haralson

OFFICER IN CHARGE, GREENBELT PARK SUB-STATION

Lieutenant Nick L. Prencipe

FIELD COMMANDERS

Lieutenant Paul F. Burgus
Lieutenant Archie L. Finagin
Lieutenant Wilbert J. Grishkot
Lieutenant Ronald R. Kerzaya
Lieutenant Milton R. Lomax
Lieutenant Joseph B. Moskaitis
Lieutenant Albert P. Qualls

OFFICER IN CHARGE, RESEARCH AND PLANNING BRANCH

Lieutenant Jesse N. Pickeral

OFFICER IN CHARGE, TECHNICAL SERVICES BRANCH

Lieutenant Ralph D. Howell

OFFICER IN CHARGE, TRAINING BRANCH

Lieutenant Edward H. Henley

SUPERVISION OF DETECTIVES

Lieutenant Joseph V. Fitzpatrick
Lieutenant Charles R. Stebbins

FORCE ACTIVITIES



PRESIDENT RICHARD M. NIXON AT LINCOLN'S
BIRTHDAY COMMEMORATION CEREMONIES



DOG HANDLER'S EXHIBIT



"SUMMER IN THE PARKS" PROGRAM



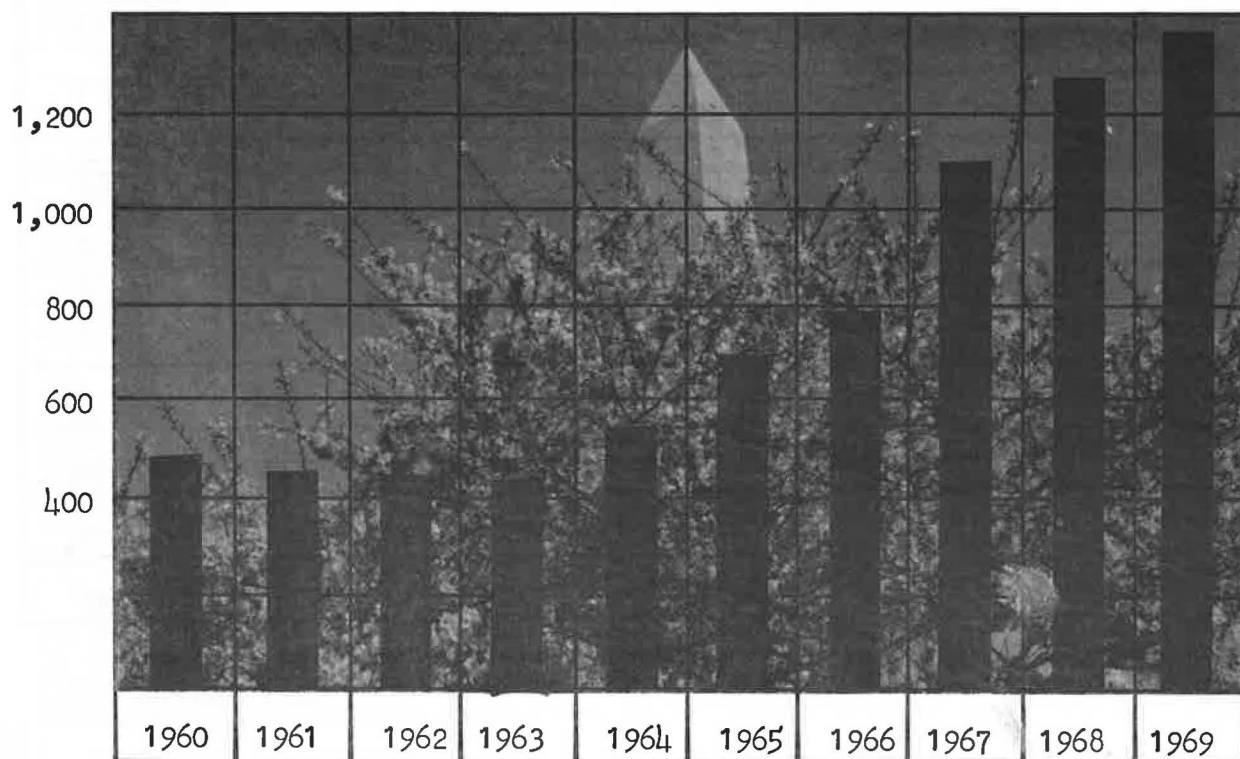
CHERRY BLOSSOM PARADE



PRESIDENT'S CUP REGATTA

COMPARISON OF ACTUAL MAJOR OFFENSES

OFFENSES	1965	1966	1967	1968	1969
Murder -----	0	0	1	0	1
Negligent Manslaughter -----	9	3	0	0	2
Rape -----	13	16	30	39	46
Robbery -----	67	91	154	230	191
Assault -----	82	74	420	165	156
Burglary, Breaking & Entering ---	56	41	101	102	112
Larceny, Grand -----	42	55	90	78	176
Larceny, Petty -----	406	456	539	597	630
Auto Theft -----	20	58	57	63	54
TOTAL	695	794	1,092	1,274	1,368



PART I OFFENSES REPORTED,
BY CLASSIFICATION

1 CLASSIFICATION OF OFFENSES (PART I CLASSES)	2 OFFENSES REPORTED OR KNOWN TO POLICE (INCLUDE "UNFOUNDED" AND ATTEMPTS)	3 UNFOUNDED, I.E., FALSE OR BASELESS COMPLAINTS	4 NUMBER OF ACTUAL OFFENSES (COLUMN 2 MINUS COLUMN 3) (INCLUDE ATTEMPTS)	5 NUMBER OF OFFENSES CLEARED BY ARREST THIS MONTH	
				a TOTAL OFFENSES CLEARED	b BY ARREST OF PERSONS UNDER 18 (INCLUDED IN 5a)
1. CRIMINAL HOMICIDE					
a. MURDER AND NONNEGLIGENT MANSLAUGHTER	1		1	1	
b. MANSLAUGHTER BY NEGLIGENCE	2		2	2	
2. FORCIBLE RAPE TOTAL	50	4	46	19	2
a. RAPE BY FORCE	38	3	35	16	1
b. ASSAULT TO RAPE - ATTEMPTS	12	1	11	3	1
3. ROBBERY TOTAL	199	8	191	45	22
a. ARMED - ANY WEAPON	80		80	23	7
b. STRONG-ARM - NO WEAPON	119	8	111	22	15
4. ASSAULT TOTAL	164	8	156	75	22
a. GUN	15	2	13	3	
b. KNIFE OR CUTTING INSTRUMENT	22		22	8	3
c. OTHER DANGEROUS WEAPON	36	2	34	19	3
d. HANDS, FISTS, FEET, ETC. - AGGRAVATED	44	1	43	21	4
e. OTHER ASSAULTS - NOT AGGRAVATED	47	3	44	24	12
5. BURGLARY TOTAL	116	4	112	10	7
a. FORCIBLE ENTRY	94	3	91	8	5
b. UNLAWFUL ENTRY - NO FORCE	18	1	17	2	2
c. ATTEMPTED FORCIBLE ENTRY	4		4		
6. LARCENY - THEFT (EXCEPT AUTO THEFT)					
a. \$50 AND OVER IN VALUE	179	3	176	17	4
b. UNDER \$50 IN VALUE	639	9	630	94	22
7. AUTO THEFT	58	4	54	6	3
GRAND TOTAL	1,408	40	1,368	269	82

PART I OFFENSES REPORTED,
BY MONTH & LOCATION

LOCATION	JAN	FEB	MAR	APR	MAY	JUN	JUL	AUG	SEPT	OCT	NOV	DEC	TOTAL
ANACOSTIA PARK	1	2	5	7	11	5	9	6	6	2	5	1	60
BALTIMORE-WASH. PRKWY.	1		2	2		4	2	4	1	2	1	3	22
AGRIC. RESEARCH CNTR.	3	4	5	1		2	4	5		3	3	2	32
C & O CANAL	1	1	6	1	7	6	5	4	4	2	5		42
CITY STREETS	1	3		1	2	1		1			2	1	12
COLUMBIA ISLAND		2	1	1	3	1	4	10	7	1	4	1	35
CONSTITUTION AVENUE				1						1			2
DUPONT CIRCLE		1		6	4	3	5	4	1	1	1		26
EAST POTOMAC PARK	1	2	4	3	5	7	15	5	6	3	2	2	55
ELLIPSE	3		2	9	7	2	5	8	2	2		8	48
FORT DUPONT	2	3		4	4	4	2	4	6	1	4	2	36
GREAT FALLS, MD.			6	1	1				1	5			14
FORT FOOTE, MD.	1					1							2
FORT HUNT, VA.					1			2	2	2			7
FORT WASHINGTON, MD.	1			5	1	1	1	2		1	1		13
JONES POINT												1	1
FRANKLIN PARK		1		2	1	3	5	4	7	2	4	3	32
GARFIELD, MAR. & FOL.							1						1
GREAT FALLS, VA.				1			1	1			1		4
G.W.M.P., VA.	11	15	6	12	22	10	22	15	27	17	9	6	172
GREENBELT PARK						2	3		1			1	7
JUDICIARY SQUARE													
LAFAYETTE PARK	2	1	1					1	1				6
LINCOLN PARK			1		1	1	1		1	1			6
G.W.M.P., D.C.					1							1	2
G.W.M.P., MD.					2	1	2	1			2	1	9
MALL	18	5	5	14	17	10	33	27	29	9	7	12	186
MERIDIAN HILL	3	2	2		6	5	1	7	3		2	1	32
MONTROSE PARK			3	2		1		1	2				9
MT. VERNON SQUARE							3						3
PALISADES		1	1	1			1	2				1	7
RESERVATIONS EAST	2	3	8	10	8	13	13	13	4	3	4	2	83
RESERVATIONS WEST	3	4	5	6	9	7	5	5	6	6	1	2	59
ROCK CREEK PARK	2	4	5	8	21	18	14	11	6	6	10	3	108
ROCK CREEK PARKWAY	1	1	2	4	4	6	3	2	2	2	1	2	30
ROOSEVELT ISLAND			1						1				2
STANTON PARK													
SUITLAND PARKWAY			1		1	4	1	3	2	1		3	16
MONUMENT GROUNDS	6	3	1	12	12	23	30	33	2	5	7	1	135
WEST POTOMAC PARK	1	6	8	1	17	4	17	15	9	4	8	2	92
TOTAL	64	64	81	115	168	145	208	196	139	82	84	62	1,408
UNFOUNDED	2	5		5	5	1	5	6	7		3	1	40
GRAND TOTAL	62	59	81	110	163	144	203	190	132	82	81	61	1,368

PART II OFFENSES REPORTED,
BY CLASSIFICATION

CLASSIFICATION	D.C.	MD.	VA.	TOTAL
OFFENSES AGAINST FAMILY	1			1
ARSON	3			3
VANDALISM	437	120	60	617
STOLEN PROPERTY	8	2	1	11
WEAPONS	63	50	19	132
SEX OFFENSES (Other than Rape)	27	6	4	37
NARCOTIC AND DRUG LAWS	20	7	4	31
LIQUOR LAWS	13		4	17
DRUNKENNESS	283	39	17	339
DISORDERLY	774	120	78	972
VAGRANCY	10			10
GAMBLING	9	1	1	11
DRIVING WHILE DRUNK	32	95	27	154
TRAFFIC (All Except Parking)	338	280	89	707
PARKING VIOLATIONS	584	42	29	655
SUSPICIOUS PERSONS	388	129	108	625
ALL OTHER OFFENSES	352	72	52	476
TOTAL	3,342	963	493	4,798

SERVICE INCIDENTS REPORTED,
BY CLASSIFICATION

CLASSIFICATION	D.C.	MD.	VA.	TOTAL
ABANDONED AND IMPOUNDED AUTOS	895	406	39	1,340
ANIMALS AND WILDLIFE	152	80	36	268
ASSISTANCE TO CITIZENS	1,994	2,859	982	5,835
ASSISTANCE TO OTHER DEPARTMENTS	1,570	414	199	2,183
BOMB THREATS	3			3
DEATHS	18	4	4	26
UNSECURED INSTALLATIONS	241	16	34	291
DAMAGE GOV'T PROPERTY (NON MALICIOUS ONLY)	15	13	2	30
FIRES	137	115	43	295
HAZARDOUS CONDITIONS	174	79	67	320
ATHLETIC	75	26	5	106
PARK MAINTENANCE NEEDED	1,567	316	284	2,167
PERMITS	10			10
PERSONNEL	34			34
PERSONS MISSING AND FOUND	150	24	19	193
POLICE SERVICES (OCCASIONS, ETC)	2,177	438	278	2,893
PROPERTY LOST AND FOUND	628	83	112	823
SICK AND INJURED	484	95	63	642
SUICIDES	14	5	1	20
TOTAL	10,338	4,973	2,168	17,479

PART II OFFENSES REPORTED,
BY MONTH & LOCATION

LOCATION	JAN	FEB	MAR	APR	MAY	JUN	JUL	AUG	SEPT	OCT	NOV	DEC	TOTAL
ANACOSTIA PARK	4	2	7	11	12	13	11	17	7	5	8	8	105
BALTIMORE-WASH. PRKWY.	32	32	49	27	41	48	42	59	47	32	42	41	492
AGRIC. RESEARCH CNTR.	1	4	3	10	9	13	10		4	10	3		67
C & O CANAL	3	4	7	24	20	25	13	13	15	10	7	5	146
CITY STREETS	3	8	15	6	9	6	7	20	13	7	12	10	116
COLUMBIA ISLAND		3	2	4	5	5	4	4	4	3	7	1	42
CONSTITUTION AVENUE	2	3	2	4	7	4	6	2	5	4	6	5	50
DUPONT CIRCLE	1	4	9	27	31	45	37	28	21	14	6	8	231
EAST POTOMAC PARK	1	9	10	14	13	11	14	8	9	4	7		100
ELLIPSE	21	14	17	11	19	51	27	28	27	21	11	26	273
FORT DUPONT	4	2	2	8	13	5	3	9	6	8	6	4	70
GREAT FALLS, MD.		2	8	10	2	6	2		1	1		2	34
FORT FOOTE, MD.	3	2		4	3	1	2	1	1	3	2		22
FORT HUNT, VA.	1	1	2	6	8	7	4	5	1	3	1		39
FORT WASHINGTON, MD.	2	1	3	6	4	1	10	4	1	10	10		52
FRANKLIN PARK	3	3	7	5	9	10	16	7	8	8	6	5	87
GARFIELD, MAR. & FOL.						1	2		2	2	1		8
GREAT FALLS, VA.	2	3	16	17	5		4	1	7	3	2		60
G.W.M.P., VA.	27	34	33	37	40	33	42	44	25	22	30	22	389
GREENBELT PARK	1	1	5	4	5	4	1	7	9	4	2	1	44
JUDICIARY SQUARE	2	1	1	1	1		1	1			2	1	11
LAFAYETTE PARK	8	2	3	3	2	4		1	1	3		1	28
LINCOLN PARK			1		2	2	6	4	10	1			26
G.W.M.P., MD.	2	4	6	4	9	9	3	1	4	7	5		54
MALL	20	9	17	21	29	24	37	21	10	15	14	20	237
MERIDIAN HILL	3	1	4	7	14	13	9	4	3	5	5	2	70
MONTROSE PARK	2	2	8	11	16	4	5		1	1	2	1	53
MT. VERNON SQUARE		1	1	1	3	2	2	1		1			12
PALISADES	3	1	1	2	4	2	10	3	1	3	1	1	32
RESERVATIONS EAST	11	10	12	26	30	45	31	24	19	17	13	5	243
RESERVATIONS WEST	9	12	19	21	65	52	54	51	52	16	14	4	369
ROCK CREEK PARK	18	12	35	32	50	32	39	61	25	14	8	8	334
ROCK CREEK PARKWAY	9	11	10	15	19	16	25	51	12	9	7	7	191
ROOSEVELT ISLAND				1	1	1	1						4
STANTON PARK					1								1
SUITLAND PARKWAY	19	7	17	17	12	20	13	17	21	17	20	11	191
MONUMENT GROUNDS	7	6	6	15	16	13	10	20	12	13	14	7	139
WEST POTOMAC PARK	28	28	36	42	39	25	42	33	20	28	28	19	368
JONES POINT					2		1		1				4
G.W.M.P., D. C.					1	1			1		1		4
TOTAL	252	239	374	454	571	554	546	550	406	324	303	225	4,798

SERVICE INCIDENTS REPORTED,
BY MONTH & LOCATION

LOCATION	JAN	FEB	MAR	APR	MAY	JUN	JUL	AUG	SEPT	OCT	NOV	DEC	TOTAL
ANACOSTIA PARK	6	18	25	36	37	42	51	29	37	31	25	15	352
BALTIMORE-WASH. PRKWY.	251	254	333	319	339	347	323	372	341	286	329	328	3,822
AGRIC. RESEARCH CNTR.	6	13	12	9	19	8	7	12	5	10	9	3	113
C & O CANAL	36	10	16	31	32	43	23	20	15	15	13	11	265
CITY STREETS	98	94	125	128	135	108	106	118	153	102	113	82	1,362
COLUMBIA ISLAND	15	6	19	18	16	13	13	12	12	13	17	12	166
CONSTITUTION AVENUE	71	45	54	57	53	99	122	124	62	57	56	42	842
DUPONT CIRCLE	10	4	20	34	39	57	47	54	52	26	19	15	377
EAST POTOMAC PARK	18	17	21	37	50	51	42	27	39	25	42	25	394
ELLIPSE	57	58	94	83	102	99	84	72	77	72	93	141	1,032
FORT DUPONT	15	19	13	9	12	8	16	8	12	10	14	6	142
GREAT FALLS, MD.	2	3	14	7	15	9	7	4	1	4	1	2	69
FORT FOOTE, MD.	3	3	3	7	7	9	2	1	2	6	1		44
FORT HUNT, VA.	5	5	3	9	17	8	3	14	5	5	4		78
FORT WASHINGTON, MD.	3	1	3	12	14	9	16	7	8	2	3	2	80
FRANKLIN PARK	10	11	6	10	17	24	16	6	12	10	10	7	139
GARFIELD, MAR. & FOL.		1			1	2			1				5
GREAT FALLS, VA.	18	7	14	20	18	24	12	24	19	5	3	2	166
G.W.M.P., VA.	154	151	163	154	162	190	170	133	122	111	125	173	1,808
GREENBELT PARK	2	1	4	17	10	17	7	22	20	11	9	6	126
JUDICIARY SQUARE	2		1	1	3		3	3	1		1	1	16
LAFAYETTE PARK	12	10	10	5	6	13	2	3	6	2	16	24	109
LINCOLN PARK	1			8	6	7	4	2	18	3			49
G.W.M.P., MD.	5	16	11	7	17	14	22	14	19	8	5	9	147
MALL	34	23	35	41	54	42	66	65	27	23	25	15	450
MERIDIAN HILL	11	4	9	12	25	26	21	23	21	10	12	7	181
MONTROSE PARK	3	3	4	9	16	14	10	7	10	5		1	82
MT. VERNON SQUARE					1	4			2				7
PALISADES	7	4	2	5	4	3	7	2	5	1	2	5	47
RESERVATIONS EAST	31	19	41	23	30	28	30	29	31	27	24	12	325
RESERVATIONS WEST	44	75	80	71	73	49	51	64	48	66	52	51	724
ROCK CREEK PARK	76	80	72	79	104	98	148	153	68	45	66	55	1,044
ROCK CREEK PARKWAY	42	44	54	33	31	60	45	61	37	50	35	45	537
ROOSEVELT ISLAND	2		2		1		2	2	1	3	2		15
STANTON PARK					1	3					1	1	6
SUITLAND PARKWAY	50	57	74	60	69	59	76	44	38	66	37	58	688
MONUMENT GROUNDS	36	28	50	86	51	90	83	82	49	59	60	41	715
WEST POTOMAC PARK	46	44	70	115	85	99	104	94	60	67	75	55	914
G.W.M.P., D. C.	3			3	3	4	1	5	2	2	2		25
JONES POINT		2				1	4	3	2	3		1	16
TOTAL	1185	1130	1457	1555	1675	1781	1746	1715	1440	1241	1301	1253	17479

PERSONS CHARGED

PART I OFFENSES	ADULT	JUVENILE	TOTAL
Murder & Non-negligent Manslaughter	1	0	1
Manslaughter by Negligence	5	0	5
Rape	5	2	7
Robbery	44	39	83
Aggravated Assault	76	10	86
Burglary		17	17
Larceny (Except Auto Theft)			
a. Grand	3	5	8
b. Petty	37	44	81
Auto Theft	60	46	106
TOTAL PART I	231	163	394
<u>PART II OFFENSES</u>			
Other Assaults	6	0	6
Stolen Property - Buy, Rec. & Possess.	20	1	21
Weapons	70	21	91
Sex Offenses	17	6	23
Narcotic Laws	20	7	27
Liquor Laws	83	16	99
Drunkenness	116	2	118
Disorderly Conduct	343	54	397
Driving Under Influence	178	0	178
Road & Driving Laws	16,433	51	16,484
Parking Violations	39,067		39,067
Traffic & Motor Veh. Laws	2,381	18	2,399
Wildlife, Hunting, etc.	21		21
Vandalism	34	43	77
Vending W/O License, Gambling, Tampering W/autos, etc.	382	381	763
TOTAL PART II	59,171	600	59,771
GRAND TOTAL	59,402	763	60,165

ANALYSIS OF ADULTS ARRESTED

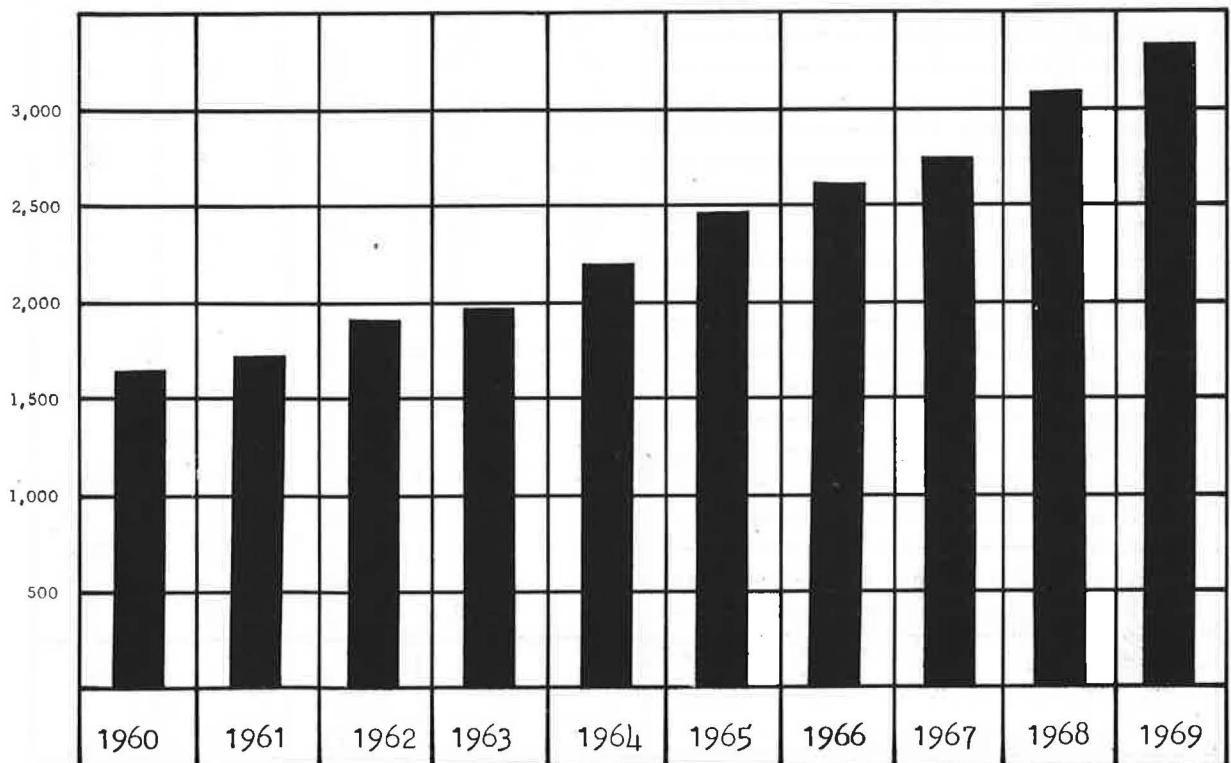
UNIFORM CLASSIFICATION OF OFFENSES	Courtesy Tags Issued	PERSONS CHARGED THIS MONTH			FOUND GUILTY THIS MONTH		PERCENT FOUND GUILTY	
		Arrested	Summoned or notified	Total	Of offense charged	Of lesser offense	1969	1968
PART I CLASSES								
1. Criminal homicide:								
(a) Murder and nonnegli- gent manslaughter		1		1	1		100%	
(b) Manslaughter by negligence		5		5	1		20%	
2. Forcible rape		5		5	1		20%	17%
3. Robbery		44		44	3		7%	6%
4. Aggravated assault		76		76	7		9%	17%
5. Burglary—breaking and/or entering								
6. Larceny— theft (except auto theft):								
(a) \$50 and over in value		3		3				20%
(b) Under \$50 in value		37		37	12		32%	40%
7. Auto theft		60		60	15		25%	28%
Total, Part I Classes		231		231	40		17%	25%
PART II CLASSES								
8. Other assaults		6		6	1		17%	20%
9. Forgery and counterfeiting								
10. Vandalism		34		34	16		47%	79%
11. Stolen property—buying, receiving, possessing		20		20	1		5%	15%
12. Weapons—carrying, pos- sessing, etc.		70		70	29		41%	56%
13. Prostitution and commer- cialized vice								
14. Sex offenses (except 2 and 13)		17		17	6		35%	97%
15. Offenses against the family and children								
16. Narcotic drug laws		20		20	2		10%	6%
17. Liquor laws		83		83	64		77%	67%
18. Drunkenness		116		116	88		76%	18%
19. Disorderly conduct		343		343	262		76%	85%
20. Vagrancy								67%
21. Gambling		2		2	2		100%	100%
22. Driving while intoxicated		178		178	99		56%	57%
23. Violation of road and driv- ing laws	5,537	340	16,093	16,433	14,181		86%	87%
24. Parking violations	3,638	90	38,977	39,067	38,911		100%	99%
25. Traffic and motor vehicle laws (except 22-24)	425	292	2,089	2,381	1,697		71%	78%
26. All other offenses	184	267	134	401	293		73%	53%
27. Suspicion or held for inves- tigation								
Total, Part II Classes	9,784	1,878	57,293	59,171	55,652		94%	92%
GRAND TOTAL	9,784	2,109	57,293	59,402	55,692		94%	91%

JUVENILES APPREHENDED

TYPE OF OFFENSE	10 and under	11-12	13-14	15	16	17	TOTAL
Rape -----					2		2
Robbery -----		5	9	8	8	9	39
Assault -----			4	3	2	1	10
Burglary -----	3	3	2	5	1	3	17
Larceny -----	3	8	18	4	7	9	49
Auto Theft -----		1	14	16	10	5	46
Stolen Property -----		1					1
Vandalism -----	6	9	14	7	2	5	43
Weapons -----		1	9	3	4	4	21
Sex Offenses -----			1		2	3	6
Narcotic Drug -----		1	3			3	7
Gambling -----							
Driving Under the Influence --							
Liquor Laws -----				3	5	8	16
Drunkenness -----					1	1	2
Disorderly -----	5	8	12	9	10	10	54
Vagrancy -----							
All Other (Except Traffic) ---	16	20	52	28	26	21	163
Curfew & Loitering Laws -----	1	4	27	30	36	44	142
Run-Aways -----	7	3	17	13	19	17	76
Total	41	64	182	129	135	143	694
Traffic Violations			4	4	24	37	69
GRAND TOTAL	41	64	186	133	159	180	763

TYPE OF OFFENSE	1965	1966	1967	1968	1969
Rape -----	0	0	2	0	2
Robbery -----	9	22	20	15	39
Assault -----	9	12	16	11	10
Burglary -----	7	12	7	8	17
Larceny -----	37	70	38	42	49
Auto Theft -----	12	13	37	36	46
Stolen Property -----	6	6	3	5	1
Arson -----	0	0	0	0	0
Vandalism -----	20	72	101	32	43
Weapons -----	13	26	28	11	21
Sex Offenses -----	0	1	2	1	6
Narcotic Drug -----	0	0	1	3	7
Liquor Laws -----	5	19	3	3	16
Gambling -----	0	0	0	6	
Disorderly -----	70	80	114	114	54
Vagrancy -----	0	0	0	1	
Drunkenness -----	7	4	7	3	2
Curfew & Loitering Laws -----	0	27	26	100	142
Run Aways -----	19	37	56	38	76
Truancy -----	83	45	45	111	109
Driving While Drunk -----	0	1	0	1	0
All Other (Except Traffic) -----	74	74	12	90	54
Total	371	521	518	631	694
Traffic Violations	96	150	133	65	69
GRAND TOTAL	467	671	651	696	763

TRAFFIC ACCIDENTS



TRAFFIC ACCIDENT SURVEY

CLASSIFICATION	District of Columbia	State of Md.	State of Va.	TOTAL
MOTOR VEHICLE ACCIDENTS				
Property Damage -----	1,248	877	521	2,646
Injury -----	263	283	139	685
Fatal -----	8	10	8	26
Total -----	1,519	1,170	668	3,357
TYPE OF ACCIDENT				
Motor Vehicle - Motor Vehicle -----	1,202	875	533	2,610
Motor Vehicle - Pedestrian -----	14	5	4	23
Motor Vehicle - Fixed Object -----	272	206	101	579
Other (Non Collision) -----	31	84	30	145
Total -----	1,519	1,170	668	3,357
PERSONS KILLED & INJURED				
Persons Killed (Non Pedestrian) -----	9	12	9	30
Pedestrians Killed -----			1	1
Persons Injured (Non Pedestrian) -----	385	483	222	1,090
Pedestrians Injured -----	14	5	5	24
Total Killed -----	9	12	10	31
Total Injured -----	399	488	227	1,114

AGES OF OPERATORS INVOLVED

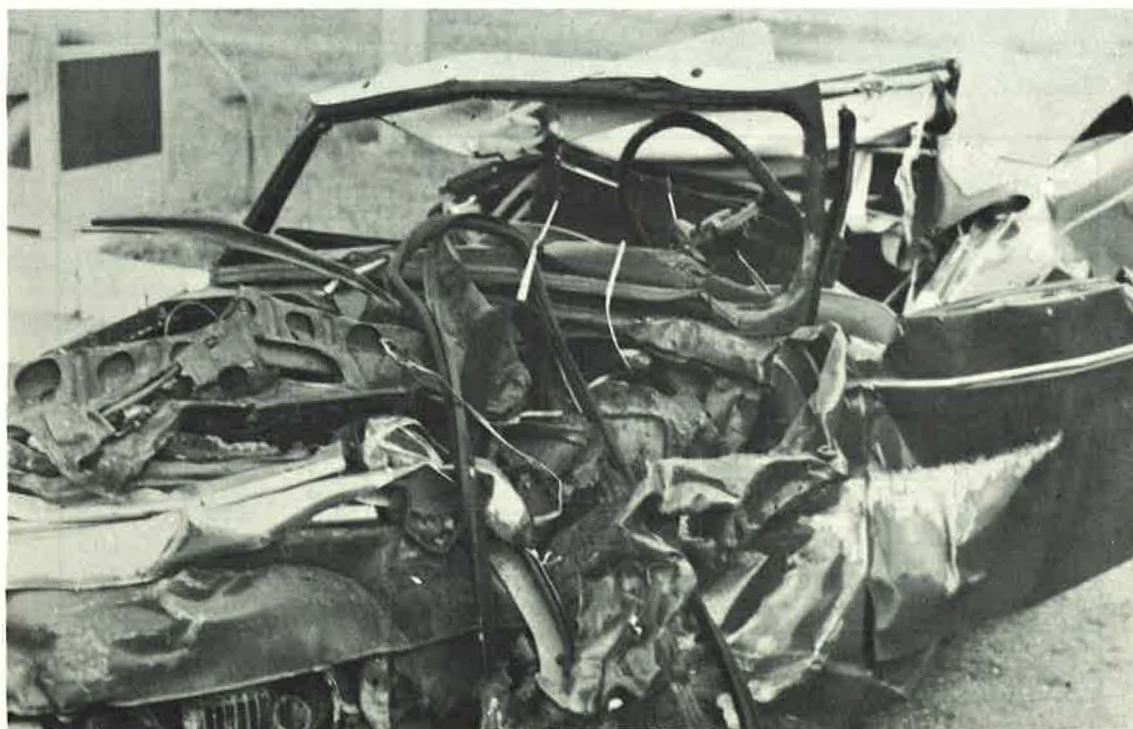
AREA	18-20	21-24	25-29	30-34	35-39	40-44	45-49	50-54	55-59	60 & Over	Unk.	TOTAL
D.C.												
Male --	191	332	417	269	206	202	176	128	101	118	9	2,149
Female--	60	104	97	65	48	37	44	38	29	25		547
MD.												
Male --	208	312	326	195	137	134	106	77	55	74	1	1,625
Female--	82	81	94	39	39	40	35	30	16	15		471
VA.												
Male --	109	150	126	117	106	104	88	67	40	43		950
Female--	46	36	43	22	30	21	23	14	6	15		256
TOTAL												
Male --	508	794	869	581	449	440	370	272	196	235	10	4,724
Female--	188	221	234	126	117	98	102	82	51	55		1,274
TOTAL --	696	1,015	1,103	707	566	538	472	354	247	290	10	5,998

TRAFFIC ACCIDENTS BY LOCATION

LOCATION	Property Damage Accidents	Personal Injury Accidents	Fatal Accidents	Total
DISTRICT OF COLUMBIA				
Anacostia -----	18	3	1	22
Baltimore-Washington Parkway ----	9	5		14
C & O Canal -----	1			1
City Streets -----	12	8		20
Columbia Island -----	131	17		148
Constitution Avenue -----	196	33		229
East Potomac Park -----	21	5	1	27
Ellipse -----	42	2		44
Fort Dupont Park-----	11	2		13
Dupont Circle -----		1		1
G.W.M.P., D.C., (Adj. to C & O) --	1			1
Mall -----	35	6		41
Franklin Park -----	1			1
Palisades -----	2			2
Reservations East -----	5			5
Reservations West -----	5	1		6
Rock Creek Park -----	142	56	1	199
Rock Creek Parkway -----	133	39	2	174
Judiciary Square -----	1			1
Suitland Parkway -----	82	31	3	116
Washington Monument Grounds -----	100	20		120
West Potomac Park -----	300	34		334
Total	1,248	263	8	1,519
STATE OF MARYLAND				
Baltimore-Washington Parkway ----	745	221	7	973
C & O Canal -----	1			1
Fort Foote, Md. -----	2			2
Fort Washington -----		1		1
George Washington Mem. Parkway --	15	8	1	24
Suitland Parkway -----	82	44	2	128
Agriculture Research Center -----	24	5		29
Greenbelt Park -----	6	2		8
Great Falls -----		1		1
City Streets -----	2	1		3
Total	877	283	10	1,170
STATE OF VIRGINIA				
G.W.M.P. -----	517	138	8	663
Fort Hunt -----	1			1
City Streets -----	2	1		3
Jones Point -----	1			1
Total	521	139	8	668
GRAND TOTAL	2,646	685	26	3,357

FIVE YEAR COMPARISON OF TRAFFIC ACCIDENTS

CLASSIFICATION	1965	1966	1967	1968	1969
MOTOR VEHICLE ACCIDENTS					
Property Damage -----	1,872	1,989	2,135	2,369	2,646
Injury (Non-Fatal) -----	590	573	610	657	685
Fatal -----	23	19	11	27	26
TOTAL	2,485	2,581	2,756	3,053	3,357
TYPE OF ACCIDENT					
Motor Vehicle - Motor Vehicle -	2,009	1,958	2,110	2,393	2,610
Motor Vehicle - Pedestrian ----	23	23	29	26	23
Motor Vehicle - Fixed Object --	353	492	492	529	579
Other (Non-Collision) -----	100	108	125	105	145
TOTAL	2,485	2,581	2,756	3,053	3,357
Persons Killed (Non-Pedestrian) -	19	21	10	30	30
Persons Injured (Non-Pedestrian)-	880	889	922	995	1,090
Pedestrians Killed -----	6	2	1	2	1
Pedestrians Injured -----	24	22	27	25	24
TOTAL KILLED	25	23	11	32	31
TOTAL INJURED	904	911	949	1,020	1,114



TRAFFIC ACCIDENTS
by
MONTH, DAY OF WEEK & HOUR

CLASSIFICATION	JAN	FEB	MAR	APR	MAY	JUNE	JULY	AUG	SEPT	OCT	NOV	DEC	TOTAL
Property Damage Accidents -----	191	170	215	225	213	206	224	256	181	251	277	237	2,646
Personal Injury Accidents -----	66	51	56	63	66	52	70	55	47	37	80	42	685
Fatal Accidents -----	3	4	4		1	2	2		2	3	3	2	26
TOTAL	260	225	275	288	280	260	296	311	230	291	360	281	3,357

Day of Week	District of Columbia	Percent	State of Virginia	Percent	State of Maryland	Percent	Total	Percent
Monday -----	212	14%	144	12%	88	13%	444	13%
Tuesday ---	213	14%	135	12%	74	11%	422	13%
Wednesday -	220	14%	139	12%	111	17%	470	14%
Thursday --	245	16%	131	11%	105	16%	481	14%
Friday -----	237	16%	217	19%	116	17%	570	17%
Saturday --	212	14%	199	17%	101	15%	512	15%
Sunday -----	180	12%	205	17%	73	11%	458	14%
TOTAL	1,519	100%	1,170	100%	668	100%	3,357	100%

HOUR OF DAY	Total	A.M. Hours	P.M. Hours
12 To 1 -----	235	121	114
1 To 2 -----	260	123	137
2 To 3 -----	293	112	181
3 To 4 -----	278	73	205
4 To 5 -----	350	41	309
5 To 6 -----	310	35	275
6 To 7 -----	257	60	197
7 To 8 -----	329	179	150
8 To 9 -----	354	215	139
9 To 10 -----	214	109	105
10 To 11 -----	233	122	111
11 To 12 -----	244	123	121
TOTAL	3,357	1,313	2,044



WINTER TIME FUN

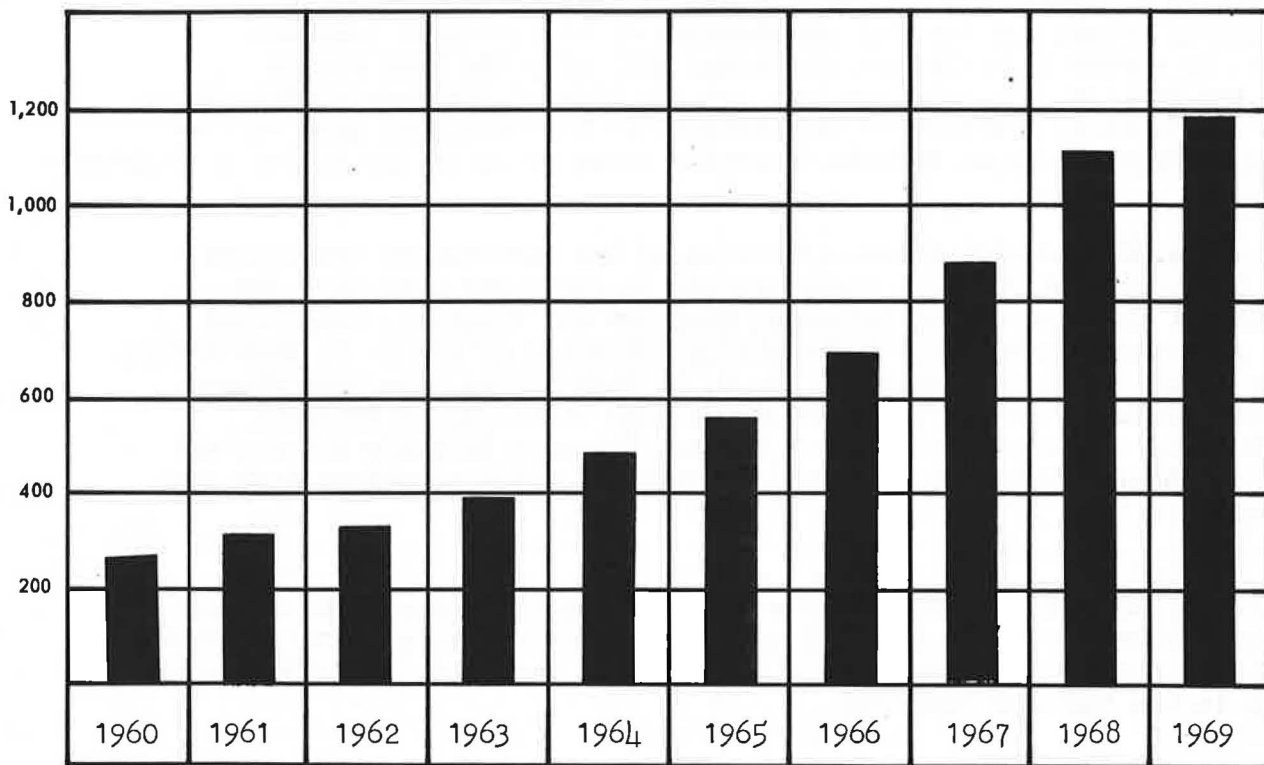
VISITATION

National Capital Parks - Central -----	5,172,775
National Capital Parks - North -----	1,035,321
National Capital Parks - East -----	832,446
Greenbelt Park -----	817,419
C & O Canal, to Seneca, Maryland -----	1,540,258
George Washington Memorial Pkwy. -----	4,361,926
Lincoln Memorial -----	3,874,533
Washington Monument -----	1,658,547
Jefferson Memorial -----	1,261,144
Custis-Lee Mansion -----	407,825
White House -----	1,521,382
Ford's Theatre -----	423,733
House Where Lincoln Died -----	293,950
 Total Visitation -----	 23,201,259



SPECIAL OCCASIONS AND EVENTS

The United States Park Police handled 1,183 Special Events during 1969. This was an all time high of recorded events. Visitation at these events was on an upward trend with a total attendance of 2,962,056. These events necessitated 5,759 individual man assignments, and accounted for 33,505 man hours of which 21,462 hours were overtime.



AREAS PATROLLED BY THE UNITED STATES PARK POLICE

	ACRES	RESERVATIONS	MILES OF ROAD	MILES OF TRAIL
DISTRICT OF COLUMBIA -----	7,710	739	98	139
MARYLAND -----	20,138	9	227	25
VIRGINIA -----	4,080	7	65	17
TOTAL -----	*31,928	755	390	181

The United States Park Police are charged with the usual responsibilities for the preservation of peace, the protection of life and property, the prevention and detection of crime, and for the apprehension of violators of laws and regulations. By virtue of their jurisdictional authority the Park Police administer and enforce, not only the laws and statutes of the Federal Government within the geographical confines of the District of Columbia, but also enforce the applicable regulations on certain federally owned areas in the states of Maryland and Virginia.

The United States Park Police is one of the major law enforcement operations within the National Park Service. There are six parkways and more than 700 parks throughout the District of Columbia, Maryland and Virginia, comprising an area of more than 18,000 acres under the jurisdiction of the U. S. Park Police. In addition to the parks and parkways, the U. S. Park Police have been placed with the responsibility of providing police service to Arlington National Cemetery, National Agricultural Research Center, Patuxent Wildlife Refuge, and Food and Drug Administration in Beltsville, Maryland, which comprises more than 13,000 acres.

*These figures do not include areas in the National Capital Parks which are not patrolled by the United States Park Police, such as: Catoctin, and that portion of the C. & O. Canal north of Seneca, in the State of Maryland, or Prince William Forest Park in the State of Virginia.

FORCE ACTIVITY REPORT

ACTIVITIES	OFFICE OF THE CHIEF		OPERATIONS DIVISION			SERVICES DIVISION		C. P. D.		FORCE TOTAL		
	POLICE	CIV.	POLICE	GUARD	CIVIL.	POLICE	CIVIL.	POLICE	CIV.	POLICE	GUARD	CIVIL.
ARREST MADE	1		1,556			8		102		1,667		
MOVING TVN'S	2		20,012			19		2		20,035		
NON MOVING			52,981			69				53,050		
CASES ASSGN.	1		23,344			28		1,636		25,009		
COURTESY TAGS			10,877			25		10		10,912		
<u>HOURS WORKED</u>												
SPECIAL DUTY	1,294	72	41,586	67	78	4,287		2,476		49,643	67	150
COURT	2		6,580			289		1,022		7,893		
WRITING REPT.	21		13,347	14		1,165	56	3,398	8	17,931	14	64
OFFICE DUTY	7,948	4,467	39,978	1,506	3,323	61,813	11,578	6,256	1724	115,995	1,506	21,092
OTHER DUTY	3,184	3,478	12,121	40	1,774	2,883	21	582	8	18,770	40	5,281
PATROL	1,605		247,853	36,194		1,217		13,092		263,767	36,194	
TRAFFIC CONT.	11		15,240	4,778		50		20		15,321	4,778	
ACCID. INVES.	6		3,652			3		521		4,182		
CRIM. INVES.	1		1,621			34		5,615		7,271		
OTHER INVES.	26	6	2,667			620		513		3,826		6
TRAINING	1,118	739	64,051	1,096		4,284	84	2,363	40	71,816	1,096	863
VEHIC. MAINT.	10	5	4,300			3,301		40		7,651		5
TOTAL HOURS	15,226	8,767	452,996	43,695	5,175	79,946	11,739	35,898	1780	584,066	43,695	27,461
<u>HOURS OFF DUTY</u>												
DAY OFF	6,816	4,000	191,517	17,143	2,328	33,459	5,464	16,672	832	248,464	17,143	12,624
ANNUAL LEAVE	1,678	580	32,934	3,722	220	6,892	687	3,492	222	44,996	3,722	1,709
SICK LEAVE	694	218	34,813	1,391	239	4,752	989	4,865	16	45,124	1,391	1,462
COMP. LEAVE	166	16	6,175	23	15	376	23	1,006		7,723	23	54
OTHER LEAVE	704	368	10,330	1,153	200	2,013	726	944	88	13,991	1,153	1,382
TOTAL LEAVE	10,058	5,182	275,769	23,432	3,002	47,492	7,889	26,979	1158	360,298	23,432	17,231
<u>HRS. OVERTIME PERFORMED</u>												
COMPENSATORY	144	1	6,995	1	6	446	93	998		8,583	1	100
MONETARY	1,260		50,703	3,056	130	8,126	247	3,470	10	63,559	3,056	387



HAROLD F. STEWART
1954 - 1962



NASH CASTRO
1962

UNITED STATES PARK POLICE
CHIEFS



GRANT WRIGHT
1968 - PRESENT



NELSON MURDOCK
1962 - 1966



WALTER W. LANGE
1966 - 1968

1960



OPENING OF THE "STONE HOUSE"



MOTORCYCLE CONTINGENT AT
THE I.D.R.A. PICNIC



AMERICAN NAZI PARTY RALLY

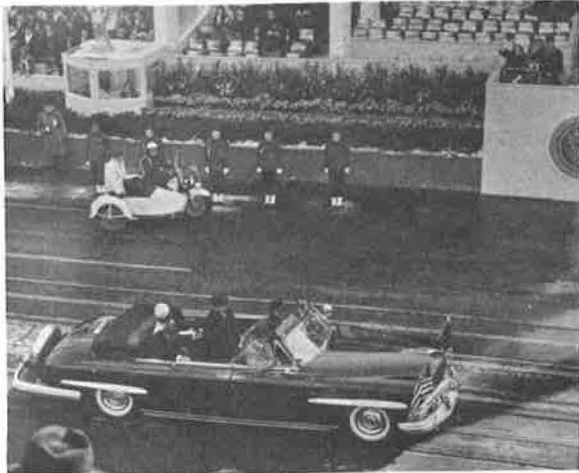


U. S. PARK POLICE PISTOL MATCH



RADAR OPERATION, BALTIMORE-
WASHINGTON PARKWAY

1961



JOHN F. KENNEDY'S INAUGURATION



U. S. PARK POLICE INSPECTION



MOTORCYCLE CONTINGENT IN
THE INAUGURAL PARADE



WASHINGTON'S BIRTHDAY
COMMEMORATION CEREMONIES



HORSE MOUNTED CONTINGENT
IN THE INAUGURAL PARADE

1962



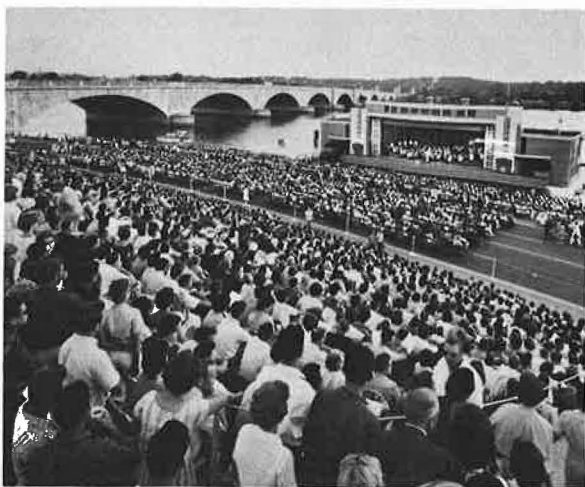
DEDICATION OF DULLES
INTERNATIONAL AIRPORT



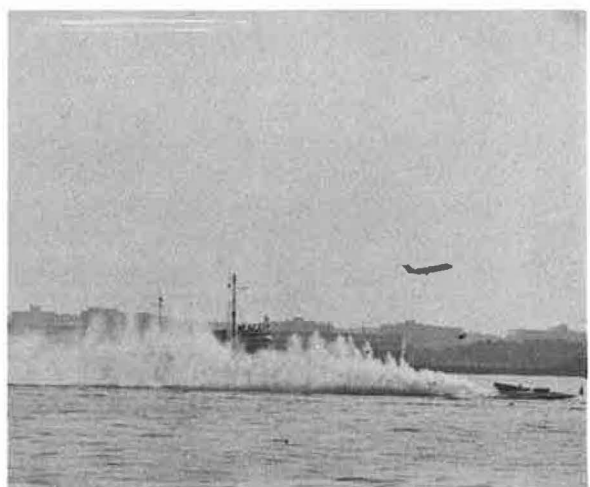
ASTRONAUT JOHN GLENN'S PARADE



CHERRY BLOSSOM PARADE



WATERGATE CONCERT



PRESIDENT'S CUP REGATTA

1963



JOHN F. KENNEDY'S FUNERAL



MARTIN LUTHER KING'S
MARCH ON WASHINGTON



JEFFERSON'S BIRTHDAY
COMMEMORATION CEREMONIES



HORSE MOUNTED PATROL



CHERRY BLOSSOM PARADE

1964



GEORGE HARTZOG BEING SWORN
IN AS DIRECTOR, N.P.S.



POLICE FIELD DAY AND FIELD
HEADQUARTERS INSPECTION



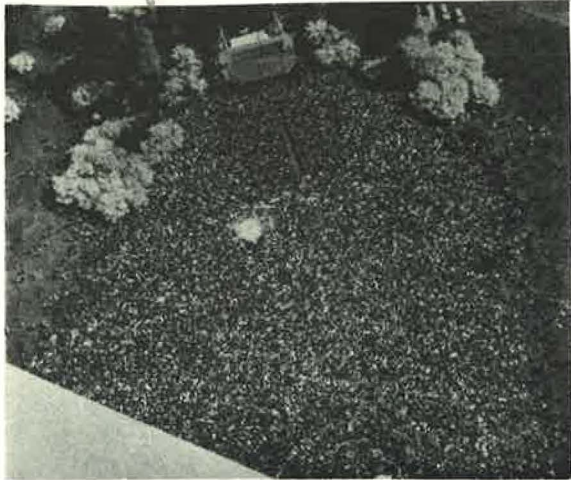
DEDICATION OF NEW HEADQUARTERS



DEDICATION OF FREDERICK
DOUGLASS HOME



U. S. PARK POLICE HEADQUARTERS
OCCUPANCY NOVEMBER, 1964



VIETNAM PROTEST



RALLY AT WATT'S BRANCH PARK



DEDICATION OF BRYCE PARK
BY: PRINCESS MARGARET

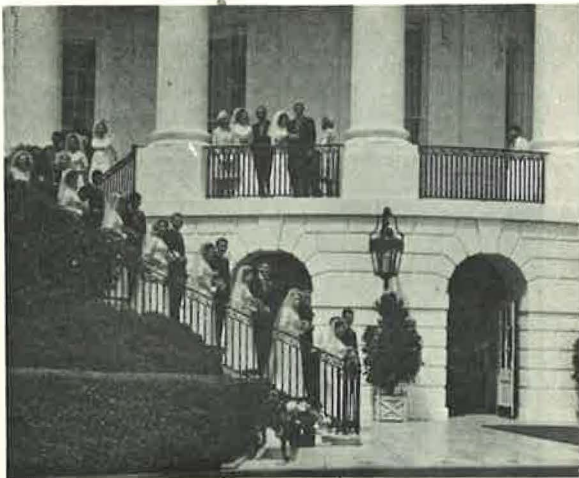


DEMONSTRATION FOR SOVIET JEWS



TORCHLIGHT TATTOO

1966



WHITE HOUSE WEDDING
LUCI JOHNSON & PAT NUGENT



HORSE MOUNTED PATROL
IN ROCK CREEK PARK



START OF SHUTTLE BUS SERVICE



HOME RULE RALLY



RETREAT PARADE

1967



MARCH ON PENTAGON



DEDICATION OF FORD'S THEATRE



PRESIDENT LYNDON B. JOHNSON AT
LINCOLN'S BIRTHDAY COMMEMORATION CEREMONIES

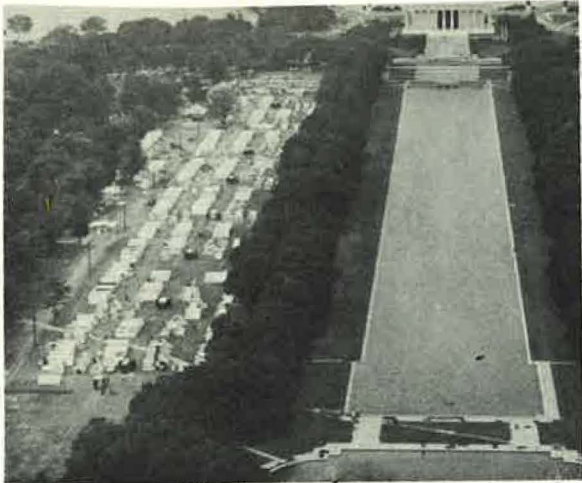


THEODORE ROOSEVELT MEMORIAL
DEDICATED OCTOBER, 1967



SIT-IN AT THE WHITE HOUSE

1968



RESURRECTION CITY



CONSTRUCTION OF THE JOHN F. KENNEDY
CULTURAL CENTER



ROBERT F. KENNEDY'S FUNERAL



DEDICATION OF WOLF TRAP FARM

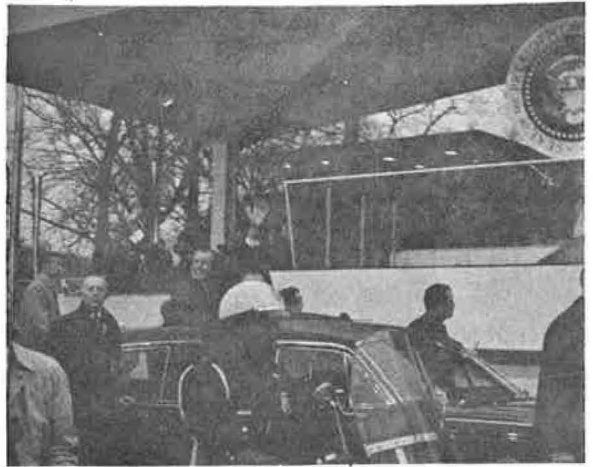


SOLIDARITY DAY

1969



POLICE CONTINGENT IN
NIXON'S INAUGURAL PARADE



RICHARD M. NIXON'S INAUGURATION



DWIGHT D. EISENHOWER'S FUNERAL



CROWNING OF THE "CHERRY BLOSSOM QUEEN"



"LOVE-IN" AT THE P STREET BEACH