

United States Park Police

Horse Mounted Manual

PREPARED BY

LIEUTENANT LARRY L. FINKS

UNITED STATES PARK POLICE  
1100 Ohio Drive, S.W.  
Washington, D.C. 20242

HORSE MOUNTED PATROL UNIT

AUGUST 1973

Revised May 1974



## PREFACE

Since the early 1930's the United States Park Police have used horses as a means of police patrol. Our first use of horses followed the general trial and error methods that prevailed throughout much of police work in those days. Rock Creek Park, a 1900 acre tract of heavily wooded terrain lying in the heart of a metropolitan area was interspersed with equestrian trails that required special policing methods. The horse was ideally suited to this purpose. Other park areas with open spaces, picnic areas, ball and play fields and other kindred activities were soon found to be places where horses could patrol more effectively than footmen or motorized patrols and stables were erected and new horse mounted beats were established.

The Nation's Capital hosts many civic functions each year, some of them local affairs and others that have a National and International flavor to them such as; the National Cherry Blossom Festival, the President's Cup Regatta, the Christmas Pageant of Peace and the Presidential Inaugural Activities. During the 1940's and 1950's the horses, in addition to being an attractive unit for display in parades, were found to be highly effective in crowd and traffic control at these functions. The horses had to be properly trained and conditioned to maneuver in crowds of people and through heavily traveled roadways so as not to be a danger to the public, themselves, and the men who rode them. Complete confidence and trust had to be established between horse and rider.



In the 1960's an era of demonstrations emerged in Washington, D.C. People have traditionally petitioned their government for grievances, either real or imagined, and the institutions of government became the target for political activists who had a cause to foster. The National Shrines such as the White House, the Washington Monument, Lincoln and Jefferson Memorials, the Capitol, Department of Justice and other Federal offices lie on or adjacent to park land. While most of the demonstrations were of a peaceful nature, the movement of crowds numbering upwards to a quarter-million people placed new demands on both horse and man. A new dimension of police concern arose out of the demonstrations when violence on a large scale grew out of those persons who openly destroyed property and attacked other persons with opposing view points. The men and their horses were put to new tests. After each demonstration, critiques were held, new methods of training were developed, new equipment was tried, and new ways of dispersing crowds were born.

By being actively engaged in virtually all of the major demonstrations in the Washington Metropolitan Area the U.S. Park Police Horse Mounted Unit has gained valuable knowledge and expertise in controlling crowds and quelling disturbances with little or no serious injuries to the horse, rider or demonstrator.



A valuable asset to  
Public Relations

## UNITED STATES PARK POLICE

### HORSE MOUNTED UNIT

This manual consist of the following numbered sections:

- I. Purpose
- II. Evaluation of Horse Mounted Needs
- III. Selection of the Horse
- IV. Training of the Horse
- V. Selection of the Horse Mounted Patrol (HMP) Personnel
- VI. Training of the HMP Personnel
- VII. Horse Mounted Patrol
- VIII. Demonstrations and Civil Disturbances
- IX. Equipment
- X. Stables Management
- XI. Transportation of Horses
- XII. Emergency Evacuation

#### I. PURPOSE

The manual has been prepared to provide information concerning the use of horses for police patrols and for crowd and traffic control at special events and demonstrations.

#### II. EVALUATION OF HORSE MOUNTED NEEDS

The first order of business in establishing a horse mounted patrol or unit is to determine the need for it. Things requiring consideration are the type of areas to be patrolled, the location of the area and its primary use, the activities it serves, the location of facilities and available equipment. Terrain, accessibility, trails, wooded areas, isolated areas, urban environments, including heavy vehicular and pedestrian traffic, street alleys, stadiums, armories, large civic and public events and demonstrations, extremes in temperatures and other exposure to the elements are important considerations.

If stables are not available, or can not be constructed close to the area of patrol, trailers or vans may have to be used to transport the horse from the stable to the patrol area. Paddocks and corrals, training areas, tack, stable equipment, hay, grain and other feed, veterinary services and shoeing are things that have to be reckoned with.

### III. SELECTION OF THE HORSE

When selecting a horse for police purposes, the following must be considered:

1. Size - The patrol horse must be a minimum of 15' 3" hands, preferably 16' hands or taller, and weigh from 1,000 to 1,250 pounds. This height is important because a big man presents a poor appearance on a small horse and a mount of this size enables the officer to better observe a large parking lot or large crowds. He can also be seen more easily. This serves as a deterrent to the would be violators.
2. Conformation - This is the most critical consideration in selecting a police mount. Soundness in the horse is extremely important since the efficiency of performance is dependent upon his ability to move. Any abnormal deviation in the structure or function of a horse constitutes an unsoundness. Horses with faulty conformation are always subject to be unsound and should not be selected. (See illustration) Blemishes should be looked for, but usually do not interfere with the serviceability of the horse. Examples of blemishes are unsightly scars, rope burns, brands, etc.
3. Bone structure - type of breed - The type of horse to be used is dependent upon the nature of the area where it will be used. A horse should be well balanced (one that is light and smooth in his gaits and agile in his changes of direction), muscular, long legged, have good stamina, have good carriage and a straight well-muscled back and good feet. This all provides for a well rounded police mount.
4. Age - The average life span of a horse is about 20 to 25 years. The average service for police work should be 10 to 15 years depending on the horses conditioning at early age. Horses should be selected between the ages of three to seven years. This provides for maximum use of the horse during his prime years. Exceptions may be made on this age range provided the horse is above average in conformation and conditioning. The age can be estimated by the appearance of the front teeth by a veterinarian or an experienced horseman.
5. Color - This varies with the individual unit and has no effect on the use. It is best to determine a single color to provide uniformity in the appearance of the unit. The U.S. Park Police select horses that are black or near black for uniformity in parades, shows and public events. However, when quality is concerned, color should be a secondary factor.

6. Disposition - Police horses must be gentle, free of vicious habits such as biting, kicking, or striking with front feet. They must not object to harnessing, saddling or grooming nor should they balk, rear, shy, or be hard to catch when turned out. They must be quiet and not object to being rubbed or petted by children or adults. The police mount with a good disposition will be a great asset to any unit in the field of public relations. Horses with stable vices such as cribbing, halter pulling, tail rubbing, weaving, bolting, etc., must be carefully evaluated because these habits may lead to more serious problems. The way a horse hauls in a van or trailer should also be considered when selecting a horse.

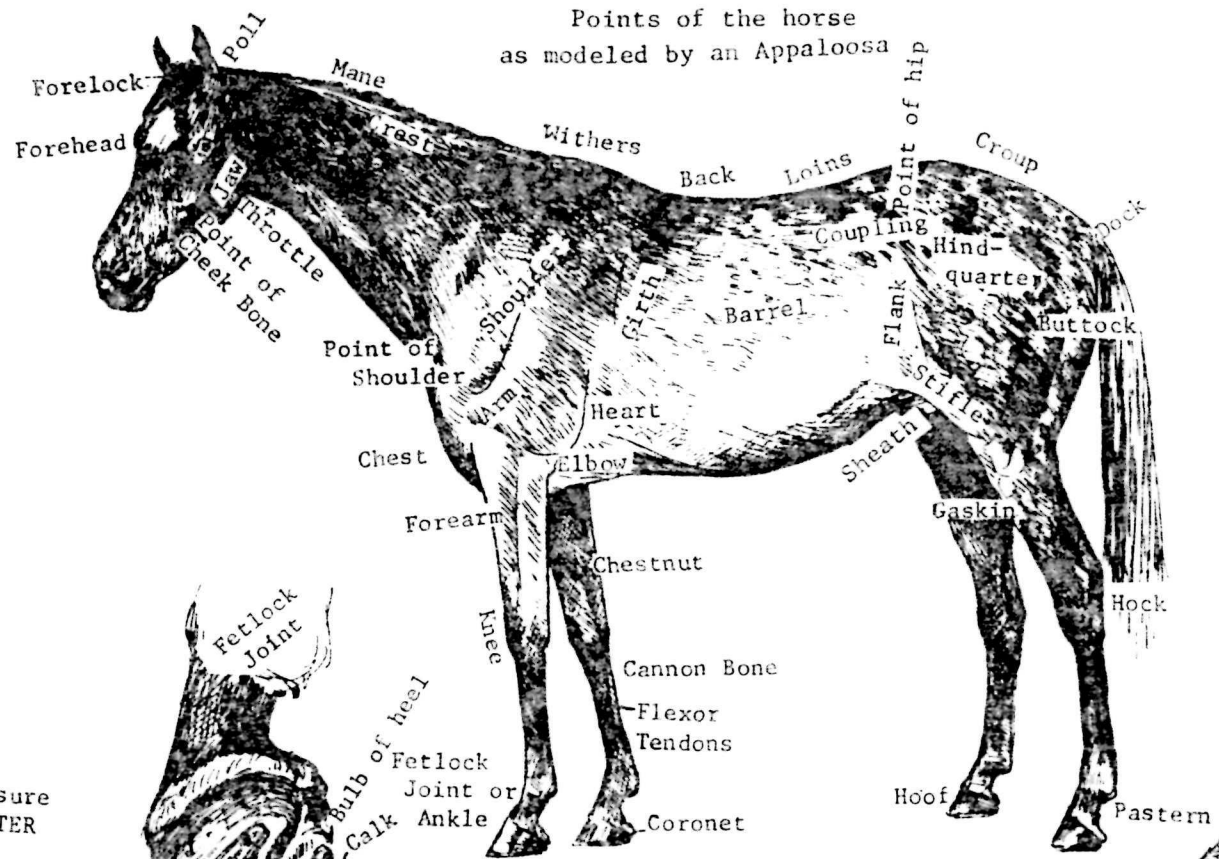
7. Gender - Through many years of experience, it has been found that the gender of the police mount reflects upon its performance. Gelded horses are used primarily because of their use around other horses and the frequency of special details where horses are side by side for long periods of time. Mares are not used because of the seasonal problems encountered. Stallions are rarely selected.

8. Broke - Horses should be at least green broke under saddle and bridle. This affords a better opportunity to evaluate the horse when the initial contact is made. Advanced schooling is desirable provided this schooling was not for the show ring where extreme gaits are evident. This causes problems when training for police maneuvers or crowd control in that many times it is necessary to de-train before retraining.

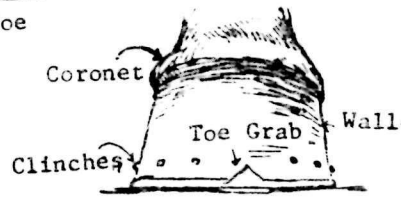
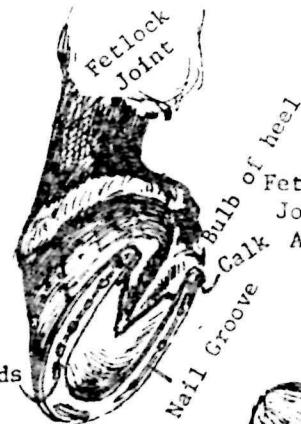
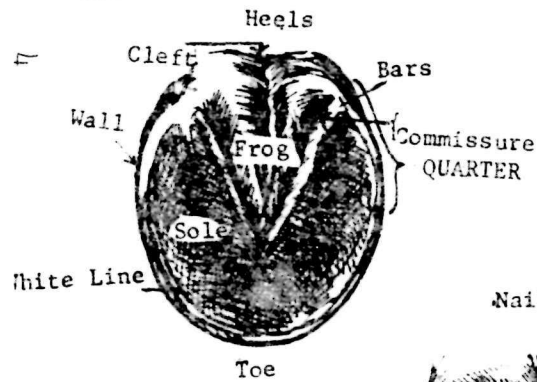
9. Trial Period - It is important that a trial period be given before the final purchase is consummated. A contract stipulating a 30-day trial period should be required. This trial period enables the unit to evaluate the nature and potential of the horse and expose him to the various elements that are likely to effect him as a police mount. All horses should be certified as sound by a veterinarian before being accepted.

Points of the horse  
as modeled by an Appaloosa

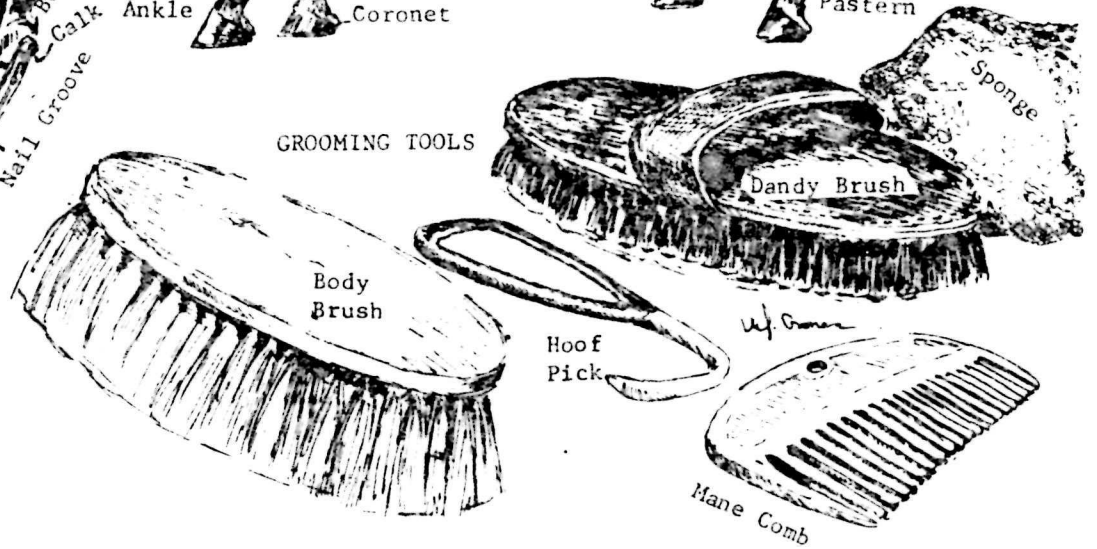
# POINTS of the HORSE



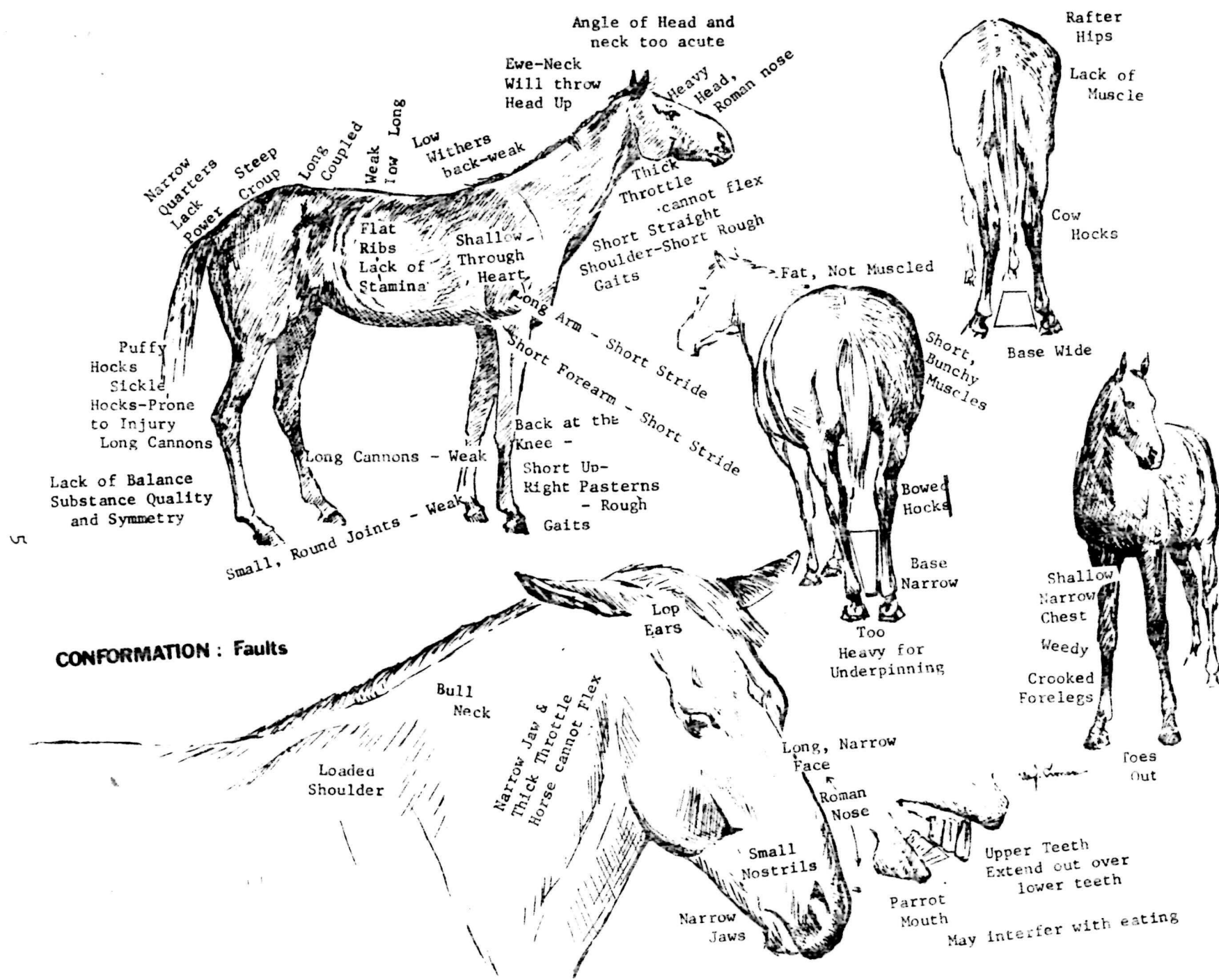
## PARTS OF Foot and Shoe



## GROOMING TOOLS

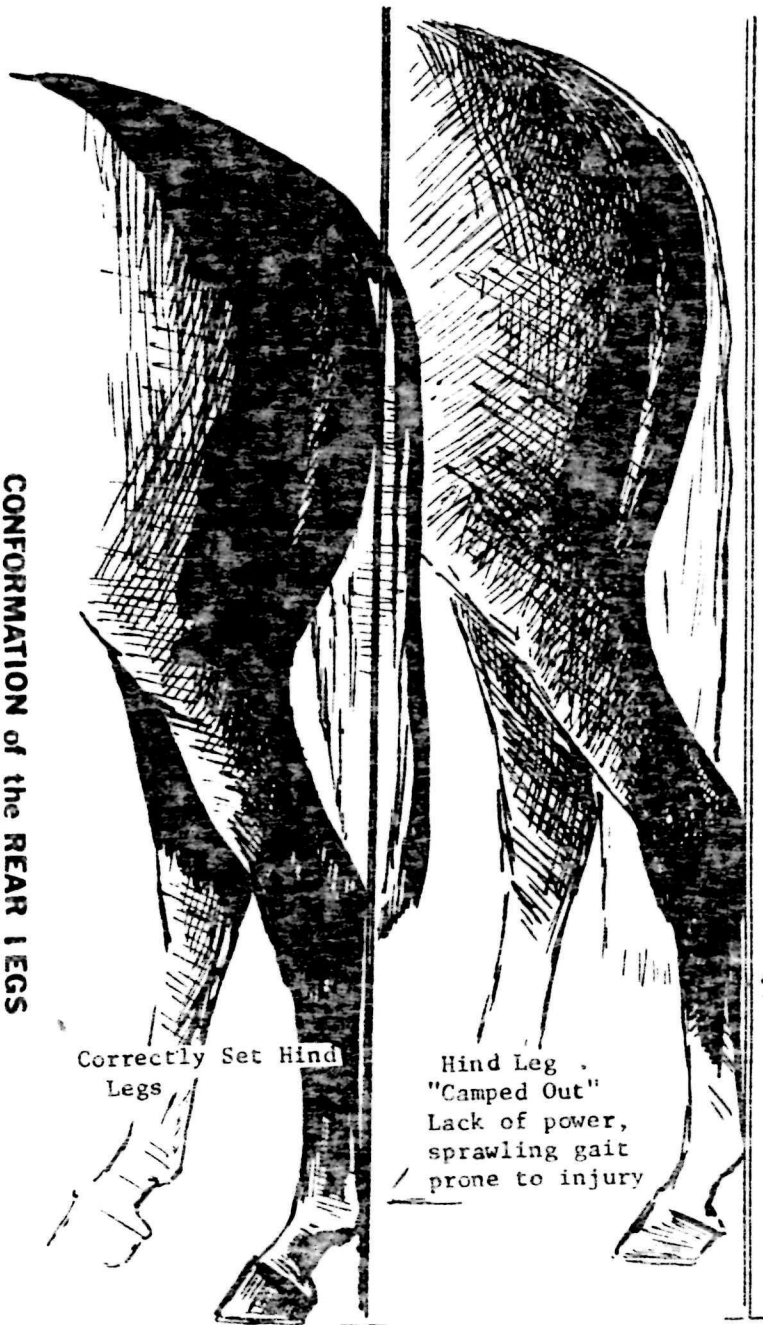






# CONFORMATION of the REAR LEGS

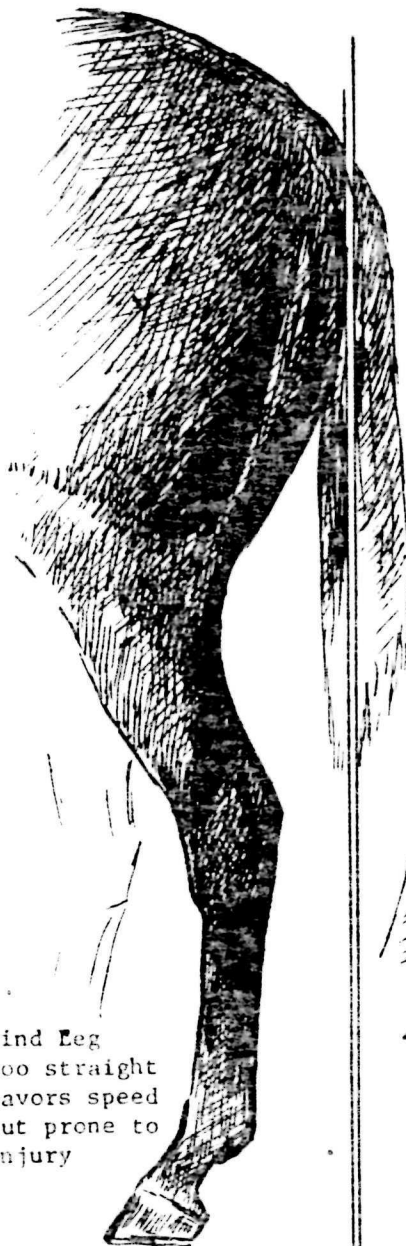
Correctly Set Hind  
Legs



Hind Leg .  
"Camped Out"  
Lack of power,  
sprawling gait  
prone to injury



Hind Leg  
too straight  
favors speed  
but prone to  
injury



Sickle  
Hock-  
cannot  
be fully  
extended  
prone to  
injury



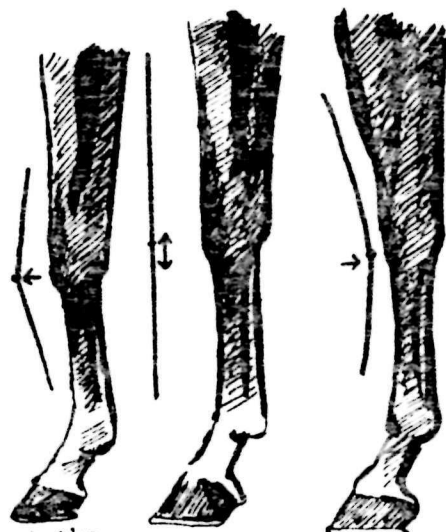
H.C. Gray



Short  
Upright-  
Rough Gaits  
Subject to  
Injury



correctly Set



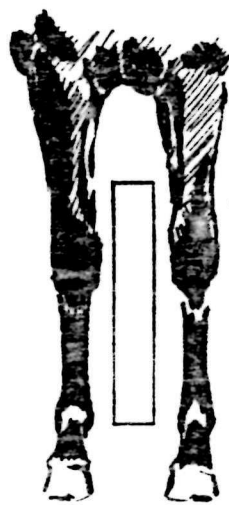
Over at the  
Knee - Likely  
to Stumble

correct

Back at the knee  
- prone to injury



Base  
Wide



Correctly Set  
Forelegs



Base  
Narrow

## CONFORMATION of the FORELEGS

Toe Out - Horse will  
Wing-In and may inter-  
fer while moving



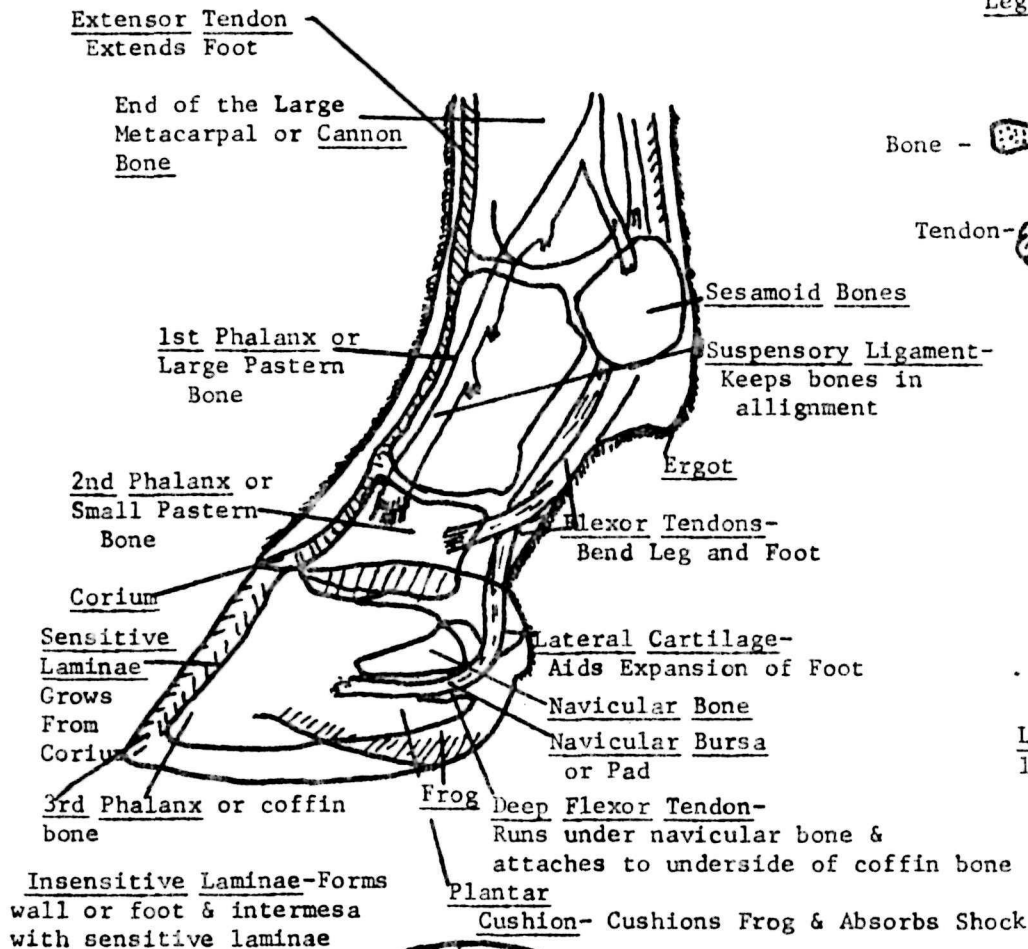
CORRECT ALIGNMENT




Toe In-  
Horse will  
Paddle or  
Wing Out when  
Moving

## BASIC ANATOMY OF THE FOOT


### Parts of the Foot and Leg and Their Function



Bone -  Part of Skeleton

Tendon -  Connects muscle to bone  
Ligament -  Connects bones to bones



Cartilage -  Flexible, cushions bones smooth joint surface

Laminae -


1. Sensitive - Grows from corium, covers coffin bone & contains blood & nerve supply

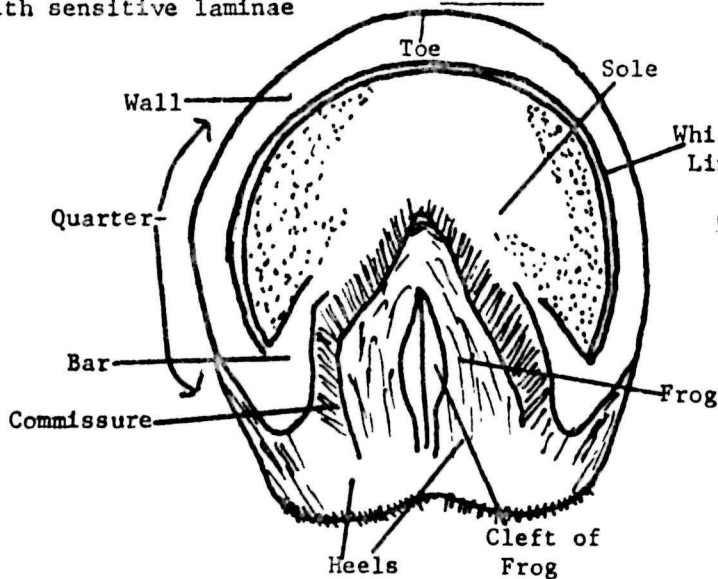


2. Insensitive - Grows from corium, forms wall of foot, intermeshed with sensitive laminae



Periople - Shiny outer covering of foot - keeps moisture in

Bursa -  Pad or Sac which cushions and protects a bone or joint

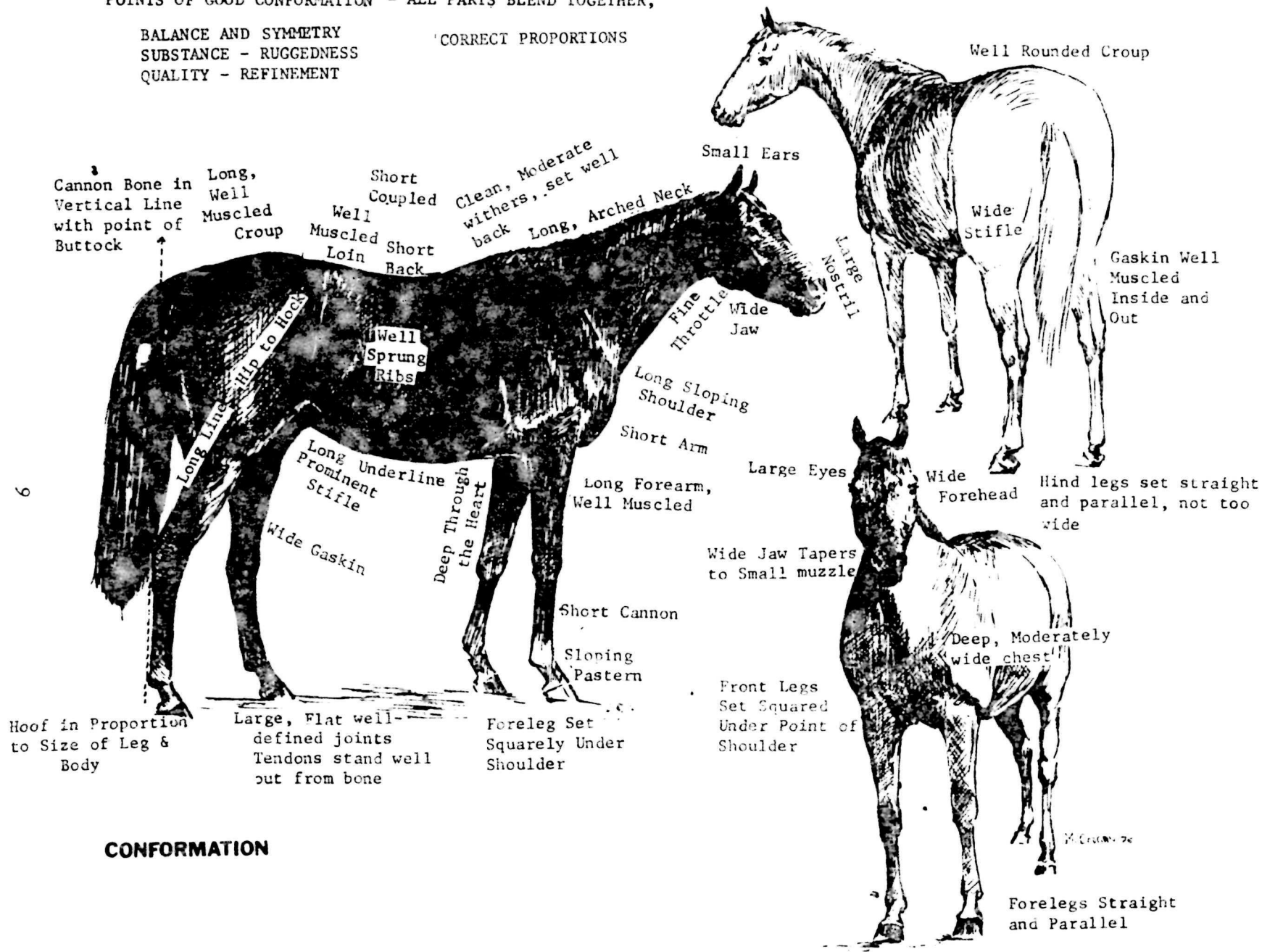


Ground Surface of  
the Foot

POINTS OF GOOD CONFORMATION - ALL PARTS BLEND TOGETHER,

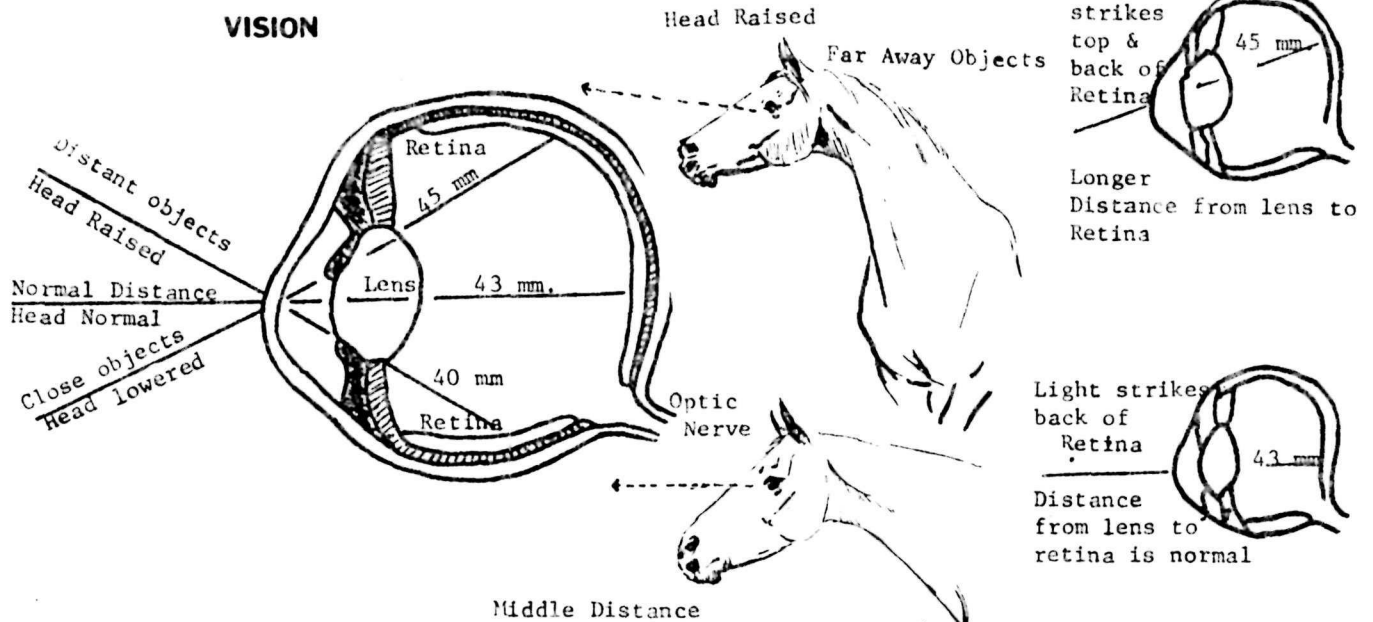
BALANCE AND SYMMETRY  
SUBSTANCE - RUGGEDNESS  
QUALITY - REFINEMENT

CORRECT PROPORTIONS

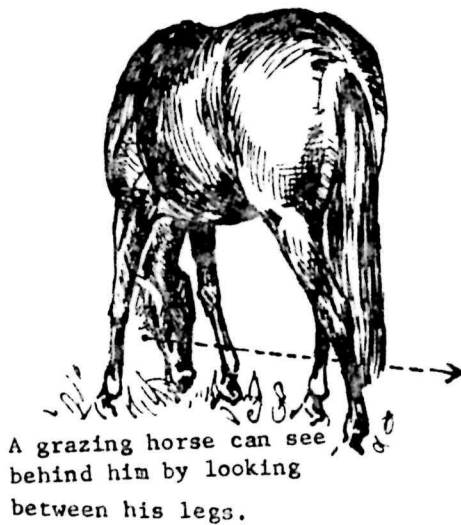


CONFORMATION

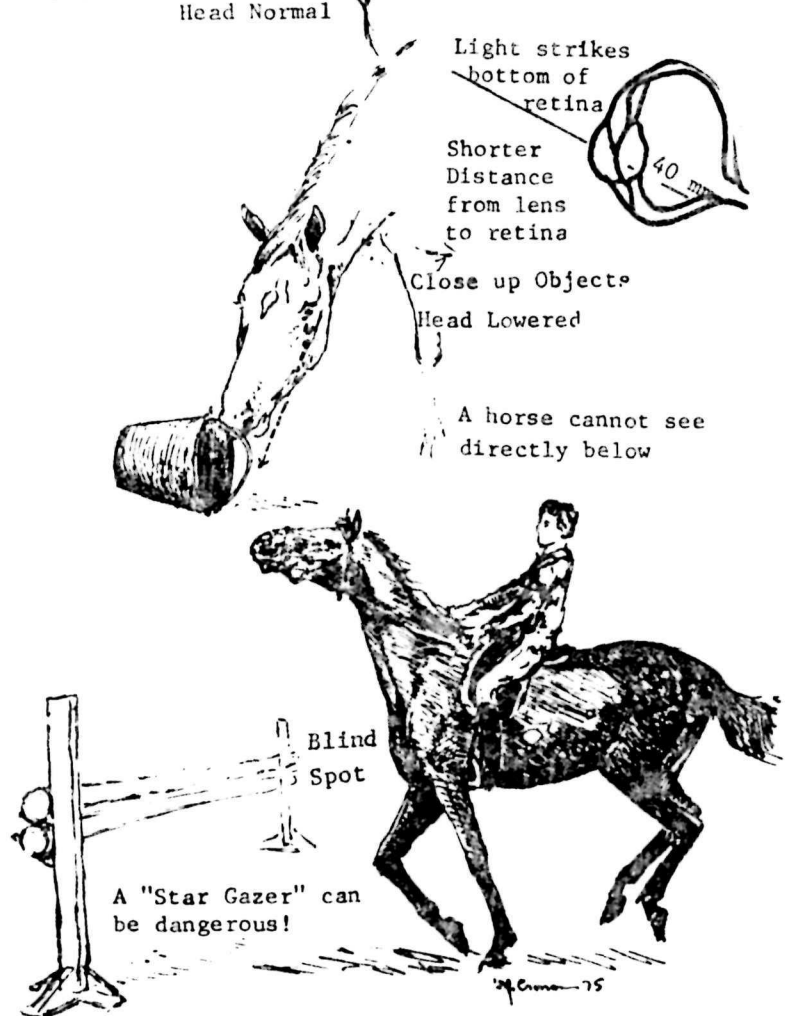
## VISION



The horse has a specialized retina which is "Banked," or not perfectly round. In order to focus his vision, he must change the angle of his head thus changing the angle of the light rays on the retina. The retina is nearer the lens in some points.



A grazing horse can see behind him by looking between his legs.





Training a horse  
to drive with long lines

#### IV. TRAINING OF THE HORSE

The trained horse is one that understands the rider's intentions from the slightest indications and immediately responds to them with lightness and exactness. He must be sensitive to the rider's leg and the lightness of the hand.

In order to master the horse, his mental as well as physical aptitudes must be taken into account. His memory is the controlling factor in his aptitude for training. He remembers or recognizes the indications given him by the reward or punishment given to a particular response. The trainer must develop confidence and lack of fear in the horse throughout the training period.

There are several fundamental principles in training that concern themselves with the development of a calm, forward moving, light and manageable horse. These principles must be considered when training a new police mount.

1. The ability of the Trainer - He must possess a profound knowledge of horses and of the theoretical and practical science of equitation. He must have a thorough understanding of the methods of training and must be able to demonstrate, in a skillful manner, that he can surface those qualities which have to be brought out in a horse.

2. The environment - The trainer must maintain the proper proportion between the training ring and the beat. Training the horse in the ring distills discipline, obedience, balance, control, temperament and proper gaits without distraction, while training on the beat conditions the mount and exposes him to conditions and situations of patrol areas.

Indoor Ring - Once the horse is taught to obey the commands of his rider, he then must be advanced to trust the rider in any situation. He will gradually be exposed to noise, objects, vehicles, other animals and crowds. The use of a tape recorder can provide such noises as sirens, horns, drums, gunshots, firecrackers, applause and other various sounds. This should be amplified over the entire ring and used suddenly as the horse approaches a speaker. Once he has entrusted the rider, he will approach these sounds without fear. As the horse advances, he should be exposed to the actual sounds of gunfire, firecrackers, motorcycles, etc. Once he has gained that confidence, he will then be exposed to objects that most horses have a natural fear of, such as paper, flags, objects





Exposing a horse  
to tear gas and smoke

around their feet, head, sides and back, plastic sheets along the ring and other articles in the ring. They must be advanced to the point where they will permit soft objects to strike them and still stand quietly. These objects may be rags, sponges, balloons, hats, etc.

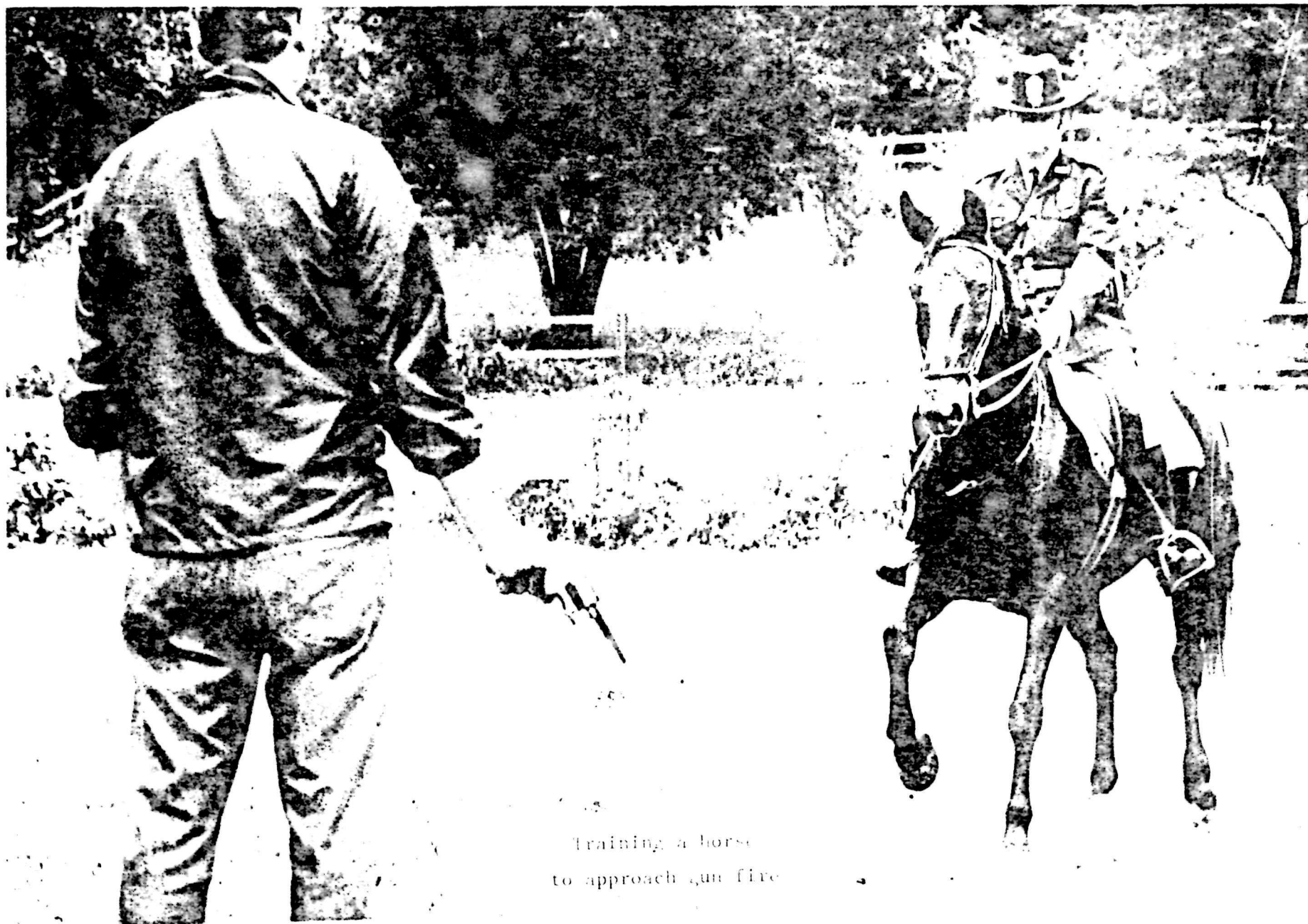
Trails - On the trail, the horse should be exposed to every day situations which a patrol horse must eventually encounter. Here a horse will be exposed to traffic beginning with lightly traveled streets and later taken along heavily traveled streets. This gradually accustoms them to the noise of buses, trucks, and other vehicles. On the trail, he should be exposed to creeks, streams, downed timber and various other obstacles. He must be trained in elementary jumping to enable him to successfully patrol partially blocked areas.

Once the mount has been thoroughly exposed to the environmental elements, he must be advanced to the schooling of unnatural movements. He should be taught to neck rein, side step (crossing both front and hind legs while moving either to the left or right), pass (moving forward and at the same time moving to the left or right), and backing.

The trainer must know and study each individual horse to decide the means of training which best suits each particular horse and regulate the training accordingly. It is not possible to bring all horses to the same degree of perfection but each should be developed to his full capabilities without demanding more than the animal has the ability to give. No scheme of training can hasten the natural growth and development of the horse. Patience and gradual increase of effort are the most effective means of training. To go slowly, in this case, is to advance efficiently.

A retraining program must be established in order to periodically evaluate the horse's needs and refresh his schooling. This enables the trainer to compare the effectiveness of the prior training and govern any future training accordingly. All horses are in need of training several minutes each day to keep them agile and to ensure the officer that his horse will respond properly if he has to be used in potential tense crowd control maneuvers.





Training a horse  
to approach gun fire

## V. SELECTION OF THE HORSE MOUNTED PATROL (HMP) PERSONNEL

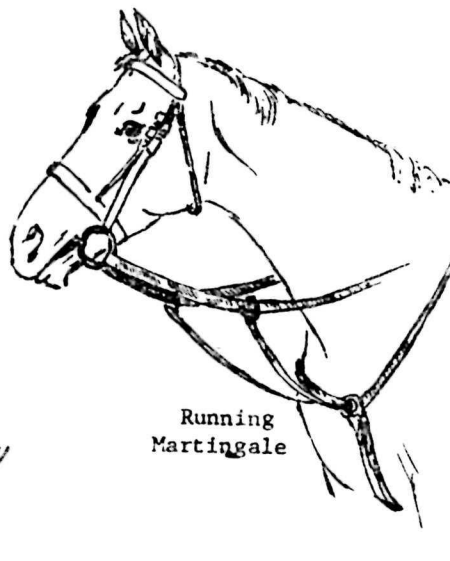
Announcements should be made to all Force members whenever horse mounted positions are to be filled. A minimum of 2-years of patrol experience is recommended so that the policeman will have a basic law enforcement experience prior to being horse mounted. It is preferred that applicants have prior experience of working with horses, however, this is not a pre-requisite. Applicants should be selected on their past performance, experience, health, attitude and basic knowledge of horses. This will include bone structure, parts of horse and the parts of the bridle and saddle.

By requiring this basic knowledge, it illustrates the interest an applicant has in the assignment. A review board should be established, comprised of at least three members of higher rank than the applicant, to evaluate the applicant's potential for training in horsemanship. An understanding should be made that although an applicant is selected for training, he cannot fill a position on the unit until he successfully completes a training period. It is advantageous to train additional men because changes in assignments and retirements create vacancies periodically. This provides trained personnel to fill vacancies as they occur.

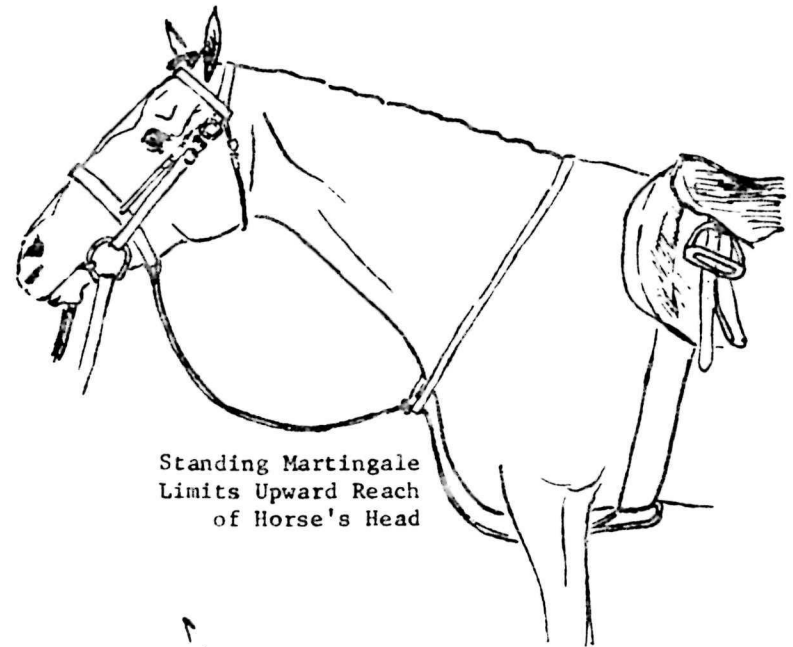
GERMAN  
MARTINGALE  
Encourages Flexion at  
the poll



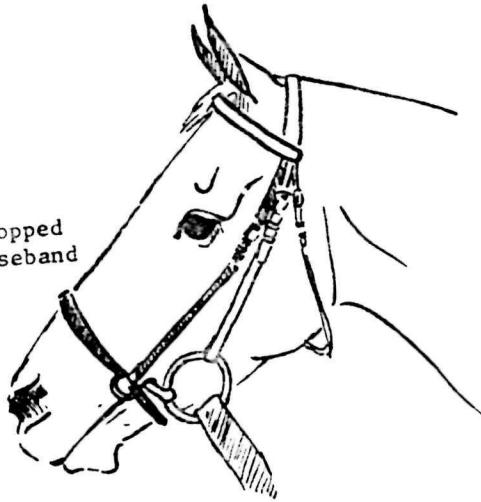
Running  
Martingale



Standing Martingale  
Limits Upward Reach  
of Horse's Head

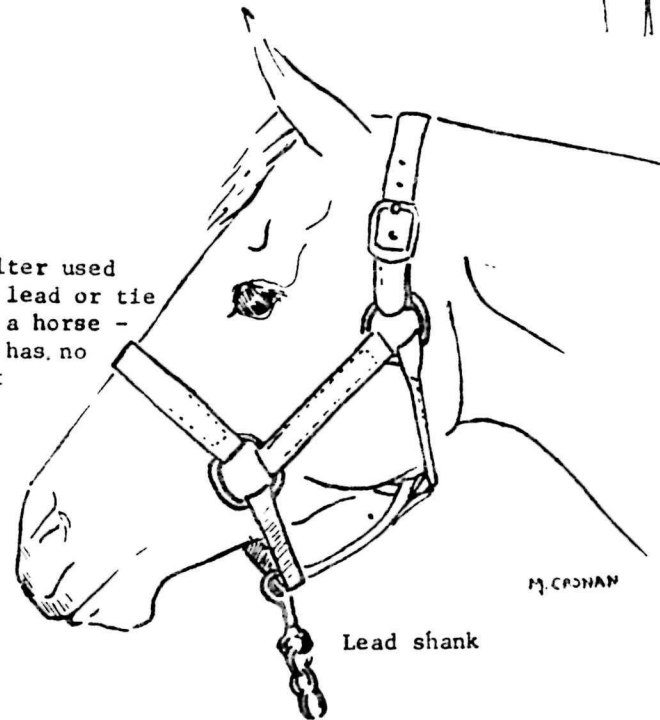


Dropped  
Noseband



## TACK

Halter used  
to lead or tie  
up a horse -  
it has no  
bit



Lead shank

M. CRONAN

## VI. TRAINING OF THE HMP PERSONNEL

Instructor - As the ability of the trainer determines the success or failure of a properly trained horse, the ability of the instructor also determines the ultimate success of all riding instructions. He must possess a profound knowledge of the theoretical and practical science of equitation and impart that knowledge to others by explanation and demonstration. He must be alert to recognize and correct any faults in his students. He must lead his students to the proper understanding of, and the ability to apply, the correct principles of equitation.

The instructor should establish a logical progression of instructions and ensure a regular sequence of steps in the training course. His main concern is to:

1. Give confidence to the rider
2. Give the rider the proper mounted position
3. Lead the rider to acquire independence in the use of his aids

Program - The student should be trained to such a proficiency that he will possess the ability to properly and professionally handle his mount in any given situation. He must possess equestrian knowledge greater than that of the average rider.

This training should consist of such principles of riding as:

1. The seat - that quality which permits the rider to remain master, whatever may be the actions of his horse.
2. The position - the body must be positioned so that the center of gravity is balanced to compensate for the movement of the horse. This balance is maintained through suppleness and muscular control.
3. The hands - lightness on the reins is required to eliminate constant pressure but complete control of the horse still must be maintained.

The student should be trained in stable management, grooming, first aid, ability to recognize illnesses, feed rationing and other duties associated with the horses. He should be familiar with the need to contact a veterinarian when the horse becomes sick or injured.

The student should be trained to ride at a walk, trot, canter, side-step, pass, and back with a saddle and on bareback. Aside from the basic gaits, the student should be able to take his horse over jumps and obstacles.

Once the training period is completed, the student should be an accomplished horseman before being assigned to permanent horse mounted duties.

## REINS

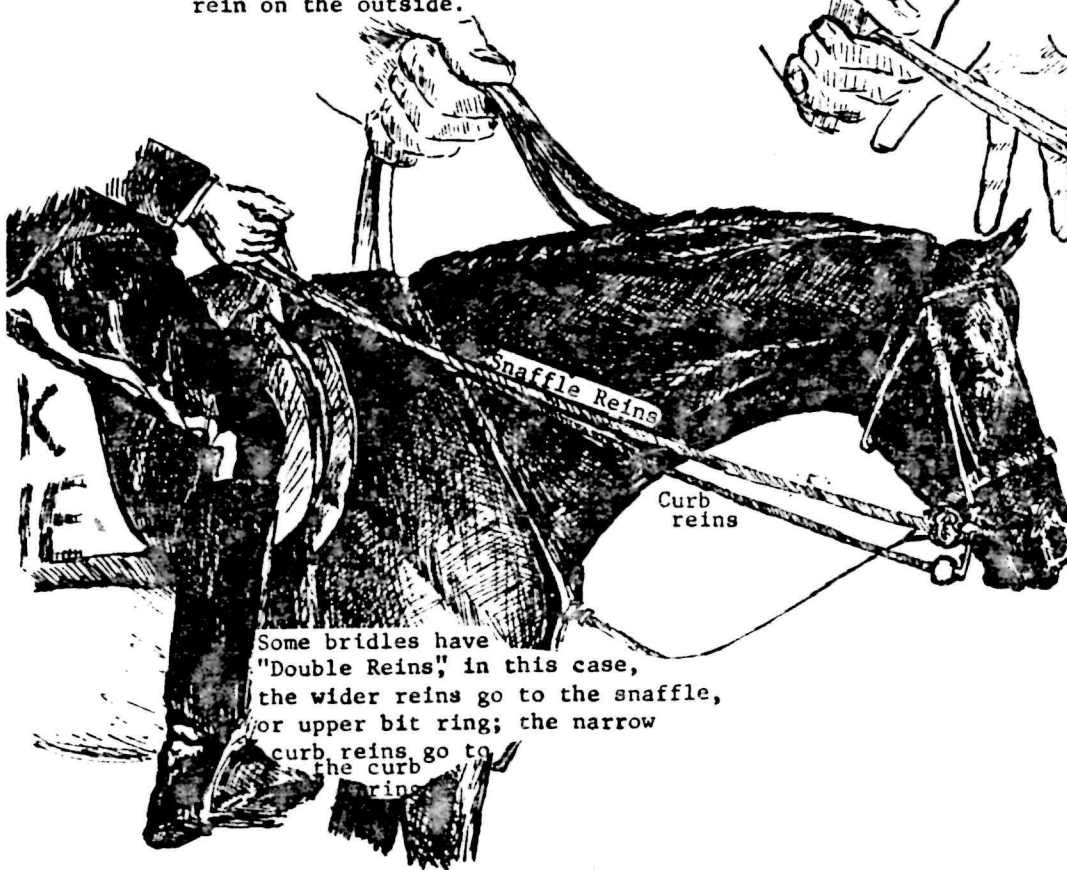
### HOW TO HOLD THE REINS

1 Pick up both reins in the left hand - snaffle rein on the outside.

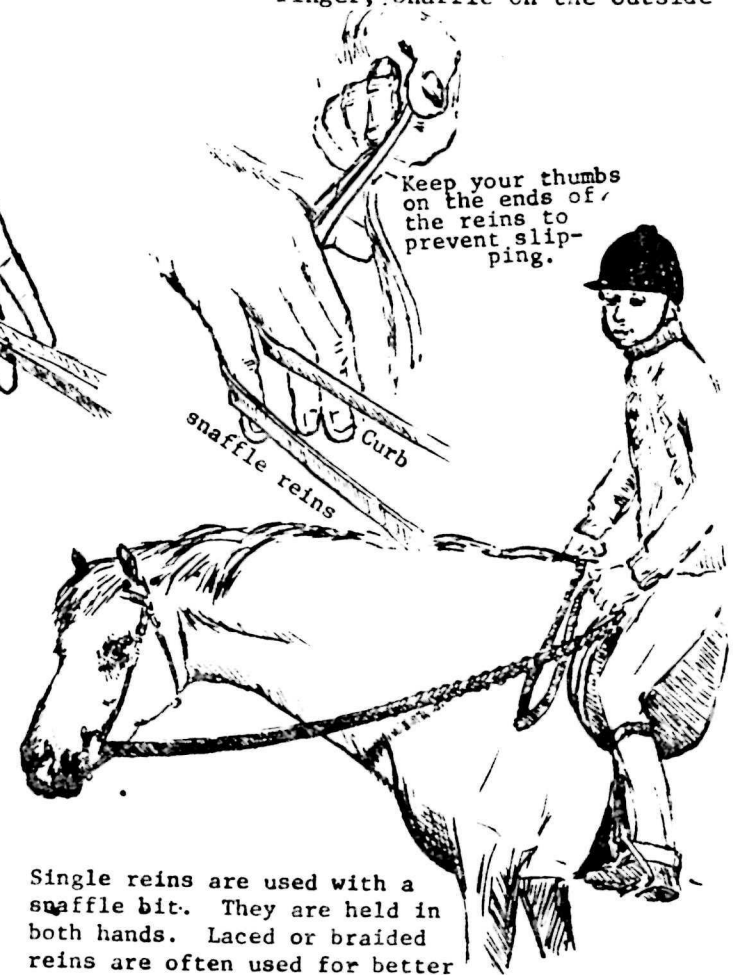
2. Put the right hand inside the reins, palm out.

Separate the curb and Snaffle with the little finger; Snaffle on the outside

Keep your thumbs on the ends of the reins to prevent slipping.



Some bridles have "Double Reins," in this case, the wider reins go to the snaffle, or upper bit ring; the narrow curb reins go to the curb bit ring.

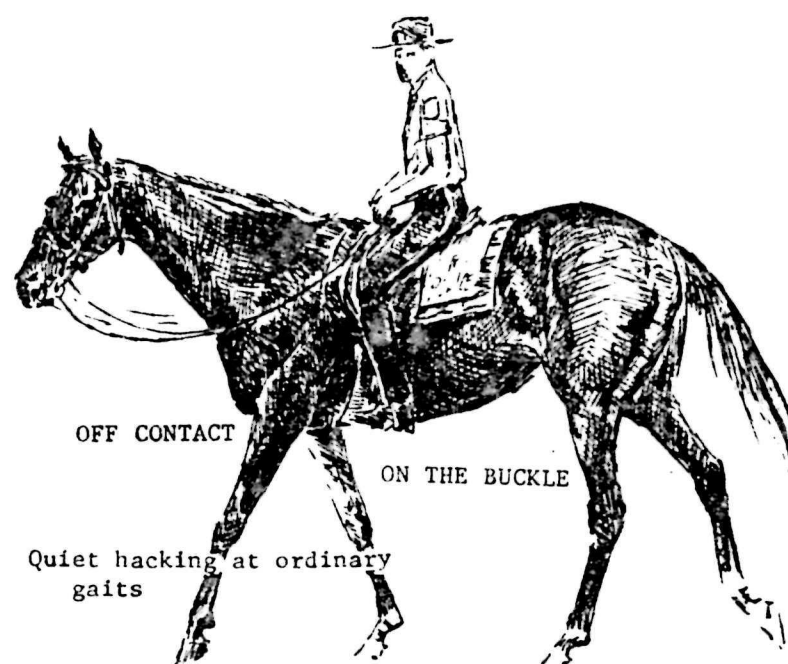


Single reins are used with a snaffle bit. They are held in both hands. Laced or braided reins are often used for better grip



CONTACT

The rider maintains a light 'feel' on the bit at all times



OFF CONTACT

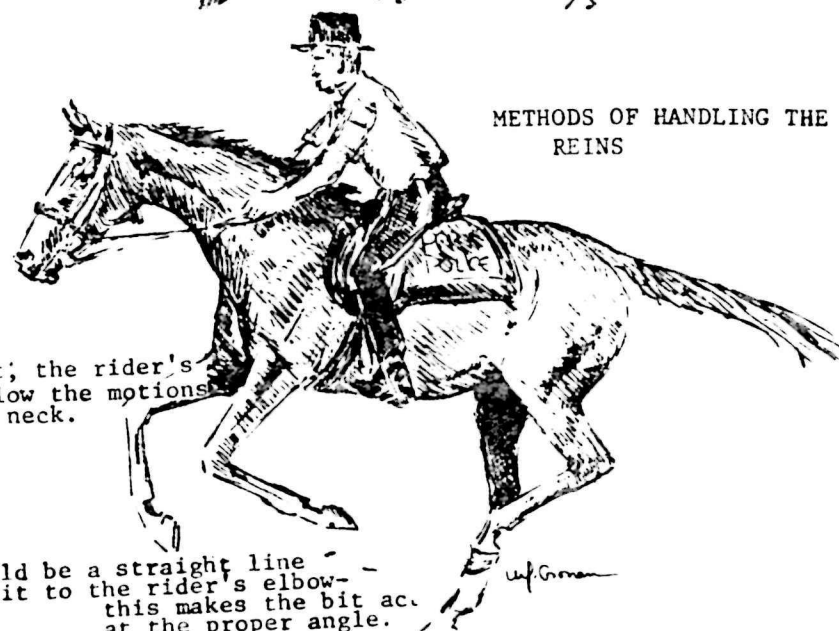
ON THE BUCKLE

Quiet hacking at ordinary gaits



REINS

In order to keep contact; the rider's hands and arms must follow the motions on the horse's head and neck.



METHODS OF HANDLING THE REINS

there should be a straight line from the bit to the rider's elbow - this makes the bit act at the proper angle.

W. J. Green



### 3 Degrees of A.

Leg Aids Passive Leg Maintains

B. Active Leg  
Squeezes or Kicks - Actively Signals Horse

C. Driving Leg Strongly  
Squeezes or Kicks, Demanding Immediate Effort From Horse

Thighs Roll in  
So That They Lie  
Flat Against Saddle

### 3 Leg Aid Positions

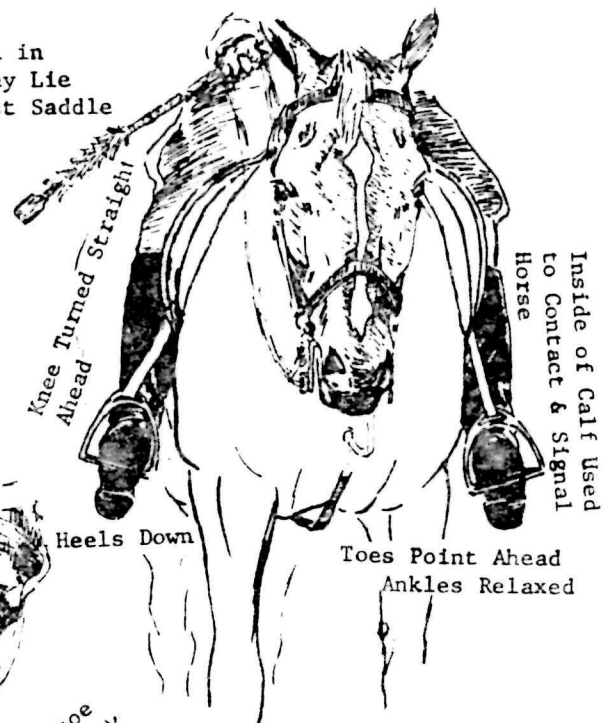
1. Normal position on Girth
2. Slightly Behind Girth
3. Several Inches Behind Girth

### SPECIFIC LEG

1. Both legs Active at Girth: Horse moves Forward

2. Right Leg Active at Girth; left leg passive behind Girth; horse bends to right.

3. Left leg active behind girth; Right Leg Passive: Hindquarters swing To Right



Heels Down

Don't Dig in Heel  
or turn toe out to apply a leg aid

### LEG AIDS

Legs Can Be Reinforced by  
Spurs or Whips



Street work for police horses requires certain departures from the classical movements of a schooled horse.

# MOVEMENT

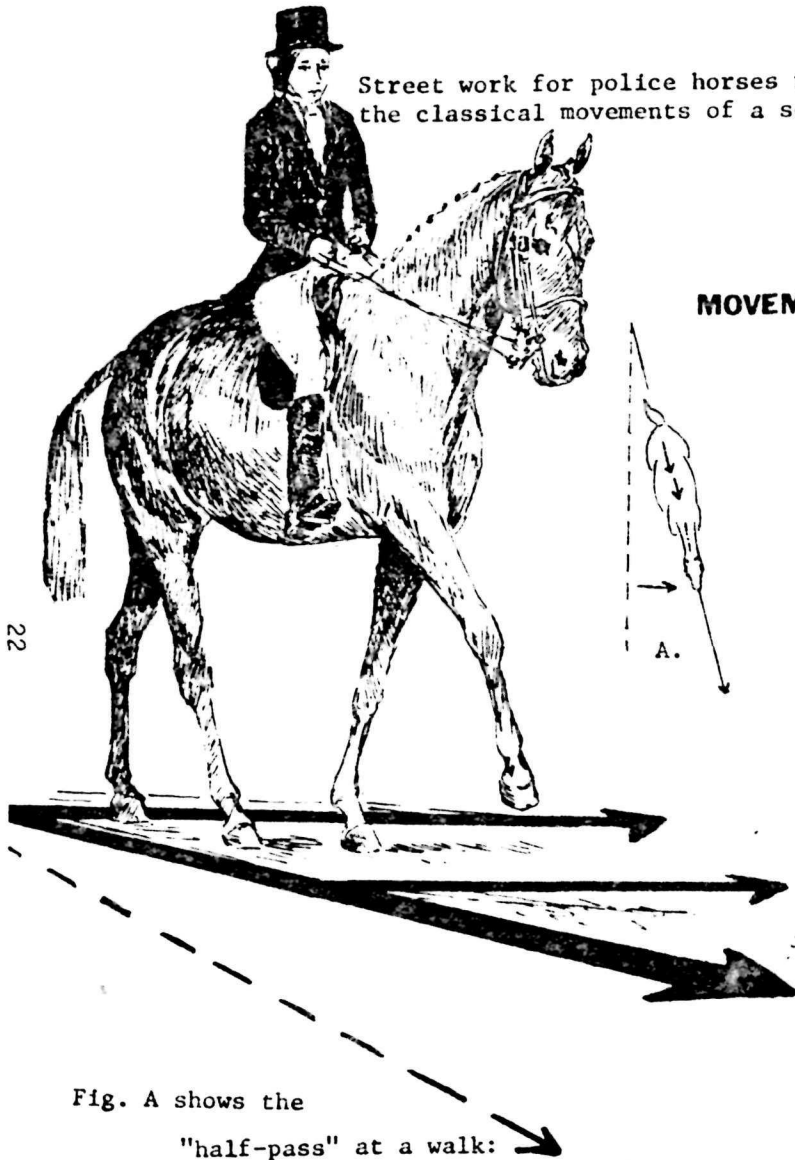
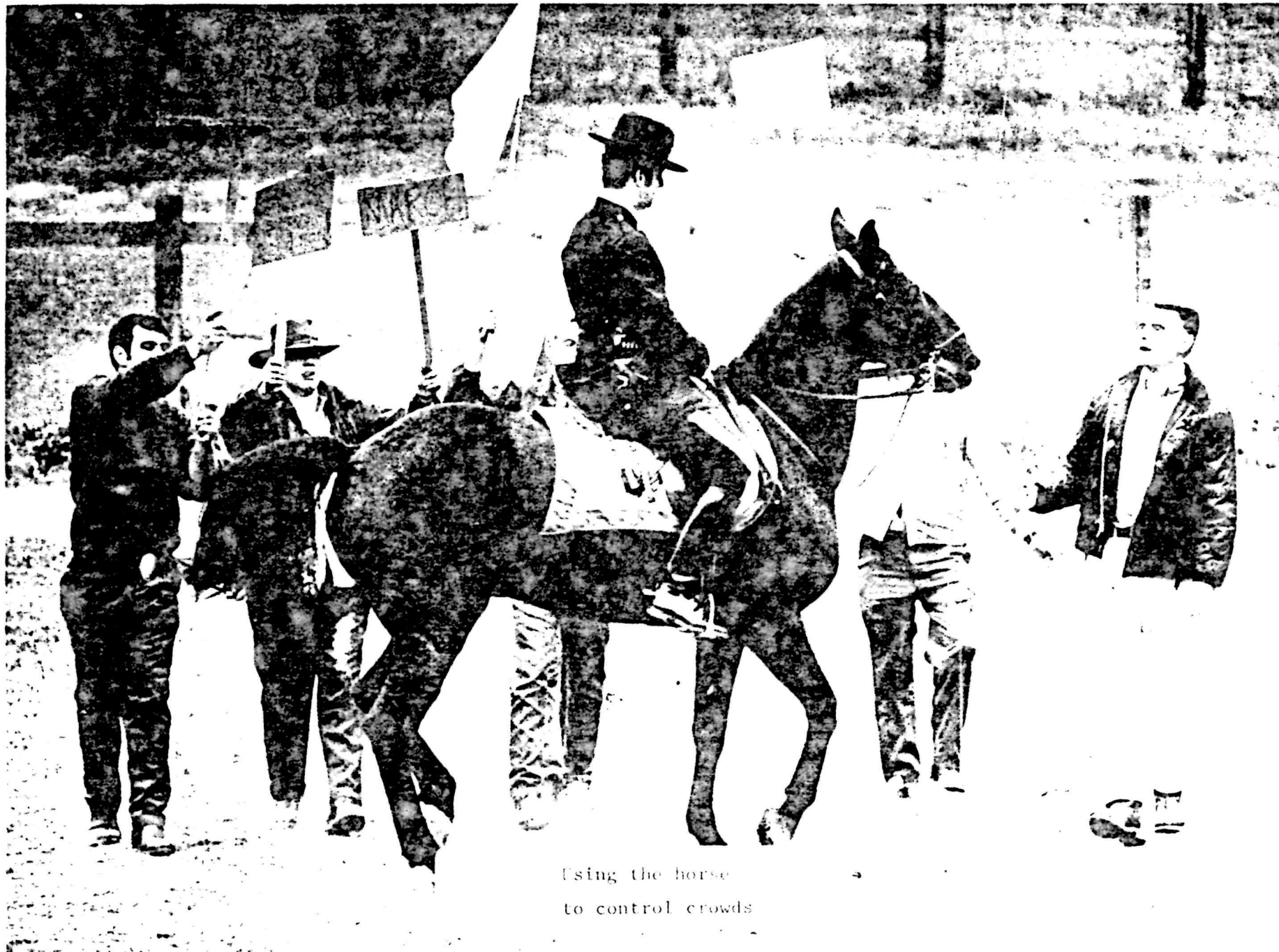


Fig. A shows the "half-pass" at a walk: the horse moves forward at an angle, body straight from head to tail, front and hind legs crossing.



Fig. B. shows the same type of movement without the benefit of moving forward: the horse must move directly sideways and be clever enough to learn not to step on himself.



## VII. HORSE MOUNTED PATROL

### DO'S

- Know your horse and his actions.
- Talk to him in a quiet voice before entering his stall or coming up behind him.
- Look your horse over carefully for cuts or sores before and after riding.
- Tie with the halter and not the bridle.
- Cross tie when cleaning.
- Check horse's stall for loose boards, nails, or other dangers.
- Allow sufficient room between horses when working around them.
- Clean horse's back, legs, feet, and head before tacking up.
- Make sure saddle pad is evenly placed under the saddle.
- Check tack for proper adjustment.
- Walk horse first ten minutes out and last ten minutes coming back.
- Make sure your horse knows what you want him to do.
- Water your horse frequently.
- Make sure his droppings are normal.
- Give your horse a little clean sod occasionally.
- Walk him back to the stable.
- Dismount before entering the stable or a building.
- Dry a wet horse before putting him in the stall.
- Rub his back to ensure proper circulation after taking saddle off.
- Check his feet for cuts and stones.
- Bed him down adequately.

Take Care of the Horse's Needs First, Your's Afterwards

### DON'TS

- Place an ice cold bit in horse's mouth.
- Punish a horse in anger.
- Punish a horse except at time he does not respond properly.
- Trot or canter on ice, snow, concrete or cobblestones.
- Irritate a horse by constant spurring or constant pulling on the bit.
- Expose him to extreme heat or cold after being ridden.
- Allow a hot horse to drink water or eat grain.
- Put a wet horse up without thoroughly drying.
- Enter the stable area while smoking.
- Allow a horse to receive tid-bits from strangers.
- Permit a horse to graze other than in a pasture, because of insecticides or other harmful chemicals.

#### DON'TS CONT.

- Grain if over-heated and not completely cooled down.
- Leave horse unattended while on a beat.
- Tie to loose objects or vehicles.

#### VIII. DEMONSTRATIONS AND CIVIL DISTURBANCES

Whenever the occasion arises where the Horse Mounted Unit is called to assist in crowd control, this unit should work under the direction of the horse mounted supervisor. All men should be equipped with helmets and riot sticks. The horses should be used in formation when moving a crowd and at no time should the horses be cantered into the crowd. The movement of the crowd should be at a walk to allow for the movement of the aged, children and physically handicapped. If the need arises to move the crowd more hurriedly, then those not physically able to move should be permitted to fall behind the lines and be escorted by the footmen following the unit. The riot stick and mace should not be used to disperse the crowd. The riot stick and mace should only be used to effect an arrest or for self protection. When the riot stick or mace is used, the officer should submit a report, as required, concerning the use of defensive equipment. Whenever possible, physical contact will be avoided when moving a crowd.

#### IX. EQUIPMENT

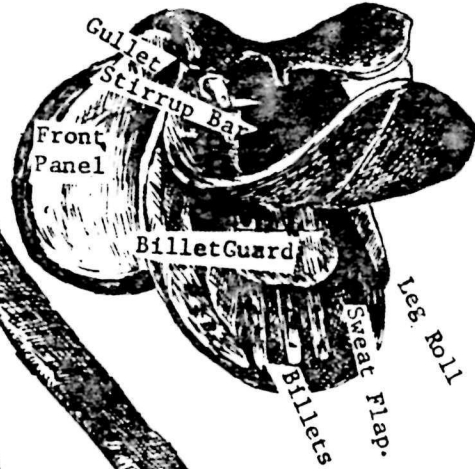
Saddle - The forward seat or the English saddle is used by the U.S. Park Police. It provides for the maximum freedom of the horse and takes the weight from directly over the back to a forward position just behind the withers. This saddle is lightweight and provides comfort to the horse and rider. It is adapted to all kinds of riding, requiring only an appropriate adjustment of the stirrups.

Bridle - The English bridle with a cavesson is used by the U.S. Park Police. It is used with a pelham bit. This bit serves a dual purpose in that it combines the snaffle bit and the curb bit into a single bit. Not only does this eliminate the use of two bits, but it provides for double reins which permits greater control. With double reins, one can be used as an emergency brake in case the other breaks or fails. When used in controlling disorderly crowds, one rein can be substituted with a light chain to prevent demonstrators from cutting the reins.

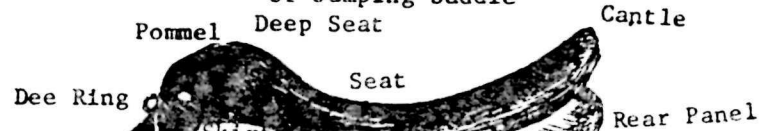
IX. EQUIPMENT CONT'T

Martingale - The martingale is used to prevent a horse from raising his head beyond the angle of control. This develops a more desirable head carriage. All members of the Horse Mounted Unit should use the martingale for uniformity.

# PARTS OF A SADDLE



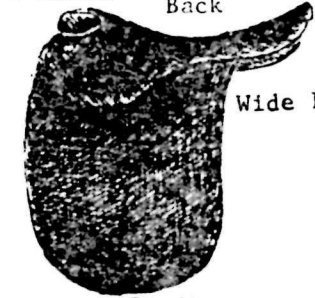
Forward Seat  
or Jumping Saddle  
Pommel Deep Seat



Knee Roll  
Suede Covered  
Keeper



Cutback  
Flat Seat  
Set Far  
Back  
Wide Flap

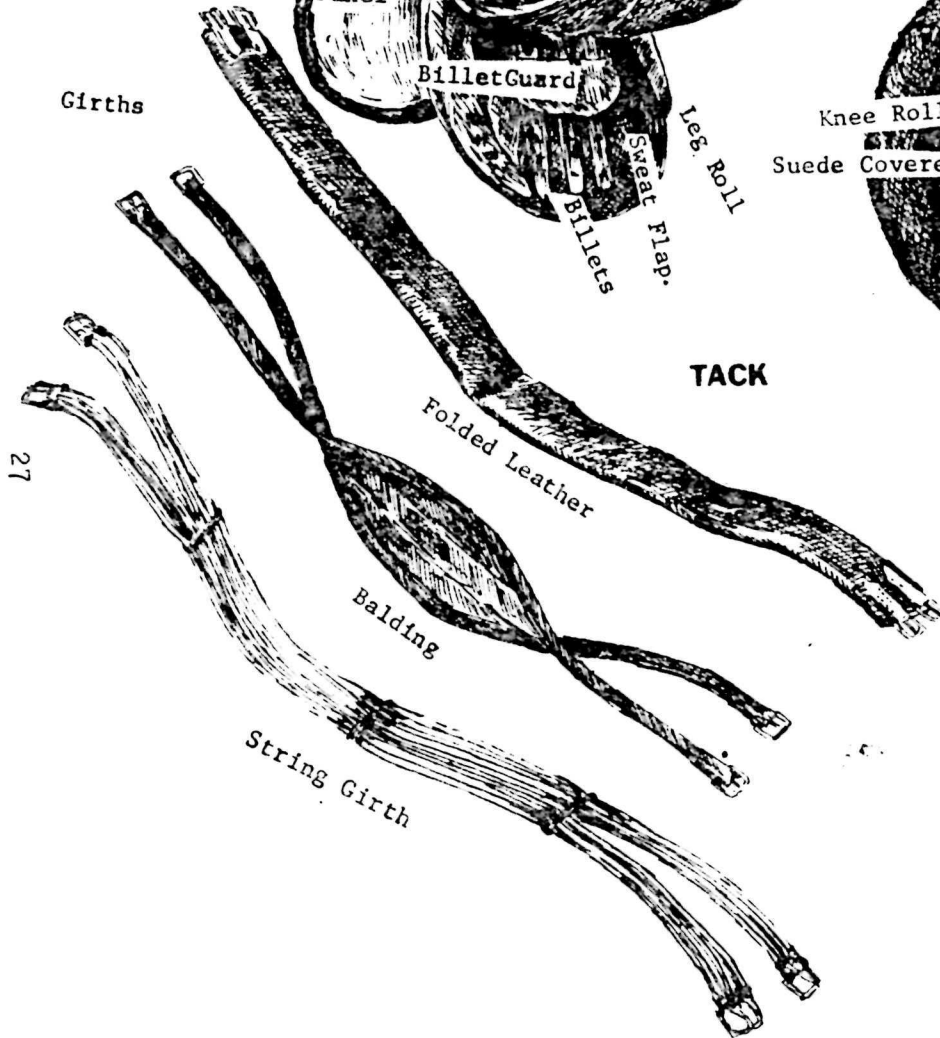


Saddle Seat  
Riding and Showing  
Cut-Back



Park or Flat Saddle  
Flat Seat

## TACK



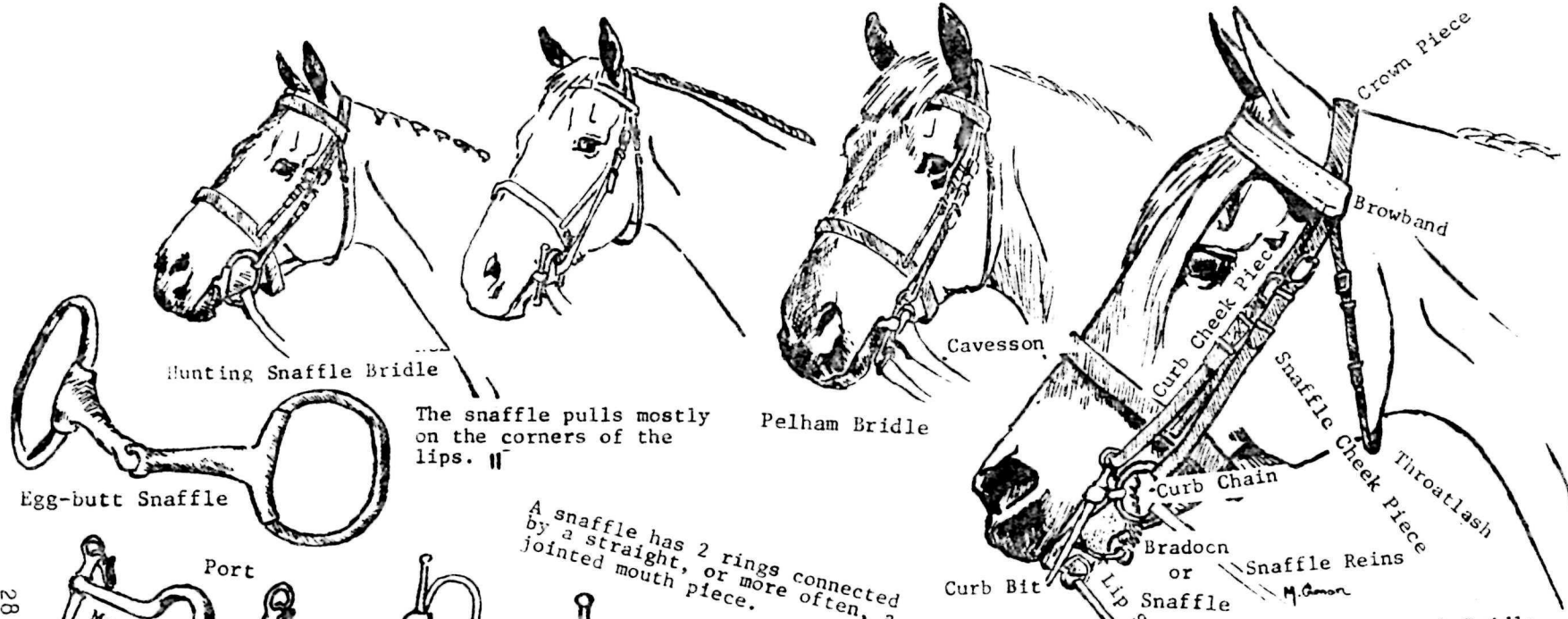
Stirrup Leather



Elastic  
No Knee Roll  
Safety Strirrup



W. C. Allen

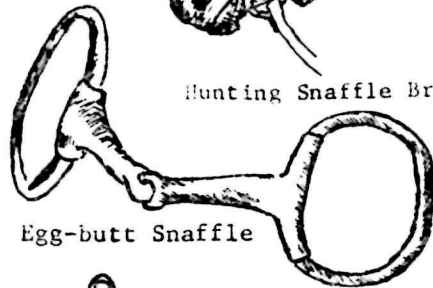


Hunting Snaffle Bridle

Pelham Bridle

Cavesson

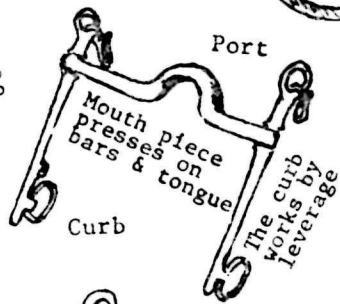
Full, Double or Weymouth Bridle



Egg-butt Snaffle

The snaffle pulls mostly on the corners of the lips. "

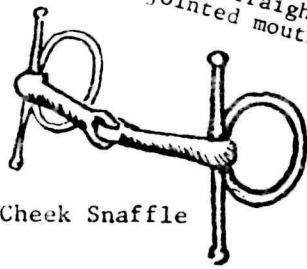
A snaffle has 2 rings connected by a straight, or more often, a jointed mouth piece.



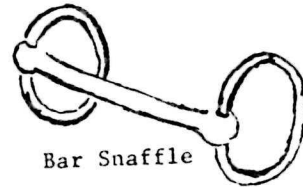
Curb

Port

Mouth piece presses on bars & tongue  
The curb works by leverage



Full Cheek Snaffle



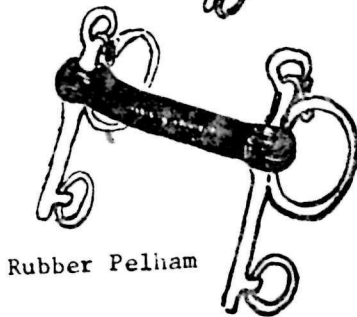
Bar Snaffle

Curb Rein pulls on lower jaw and bars

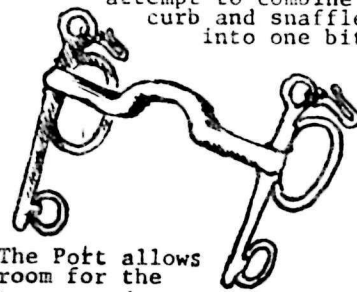
Snaffle and curb bits are used together in a full bridle.

Snaffle Rein pulls back on lips

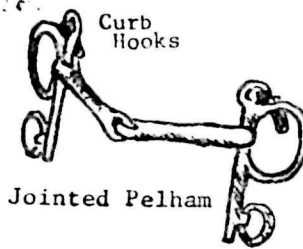
A pelham bit is an attempt to combine curb and snaffle into one bit.



Rubber Pelham



The Port allows room for the tongue and concentrates pressure on the bars.



Jointed Pelham

Curb Hooks



Curb chain

**TACK**

**TACK**

*M. Cronan*



## X. STABLE MANAGEMENT

Each individual officer should be responsible for the welfare of his assigned mount. He must care for the horse's feet and back to ensure the well being of the horse. Any injuries or illnesses to the horse should be treated immediately by the officer first observing if the assigned officer is not present. The need for shoeing, inoculations, or other vet attention should be brought to the attention of the OIC, Horse Mounted Unit.

Horses are creatures of habit and thrive best if cared for accordingly, to a fairly strict daily routine. It will be necessary to vary from this routine from time to time. The following steps should be taken when an officer is assigned to stable duties:

1. Water - The horses should be provided with a sufficient amount of fresh clean water before feeding.
2. Hay - Feed from 8 to 10 pounds of hay morning and evening. Allow the horse to eat most of his hay before graining.
3. Grain - Feed from 4 to 5 pounds of oats or other grain morning and evening.
4. Salt - Make sure that all horses have free access to salt in their stalls.
5. Muck Out Stalls - Remove the droppings and soiled portions of bedding. Stalls should be allowed to dry out before bedding down. The floor of the stall must be thoroughly swept when cleaning stall.
6. Aisles - Must be swept daily to prevent accumulation of hay, straw and other material.
7. Office and Tack Room - Must be kept in a clean and orderly manner free of any fire or safety hazards.
8. Grooming - The skin of a horse is a vital organ and grooming is as essential to his good health as it is to his appearance. This serves a multiple purpose in that not only does it clean the horse, it promotes good health, maintains condition of skin, prevents disease, and improves the appearance of the horse.



## Stable Construction

When planning for stable construction, the following should be considered when deciding on a site:

1. dry foundation - a well aerated soil, which dries out readily after a rain
2. free drainage
3. pure air
4. good light
5. good water supply

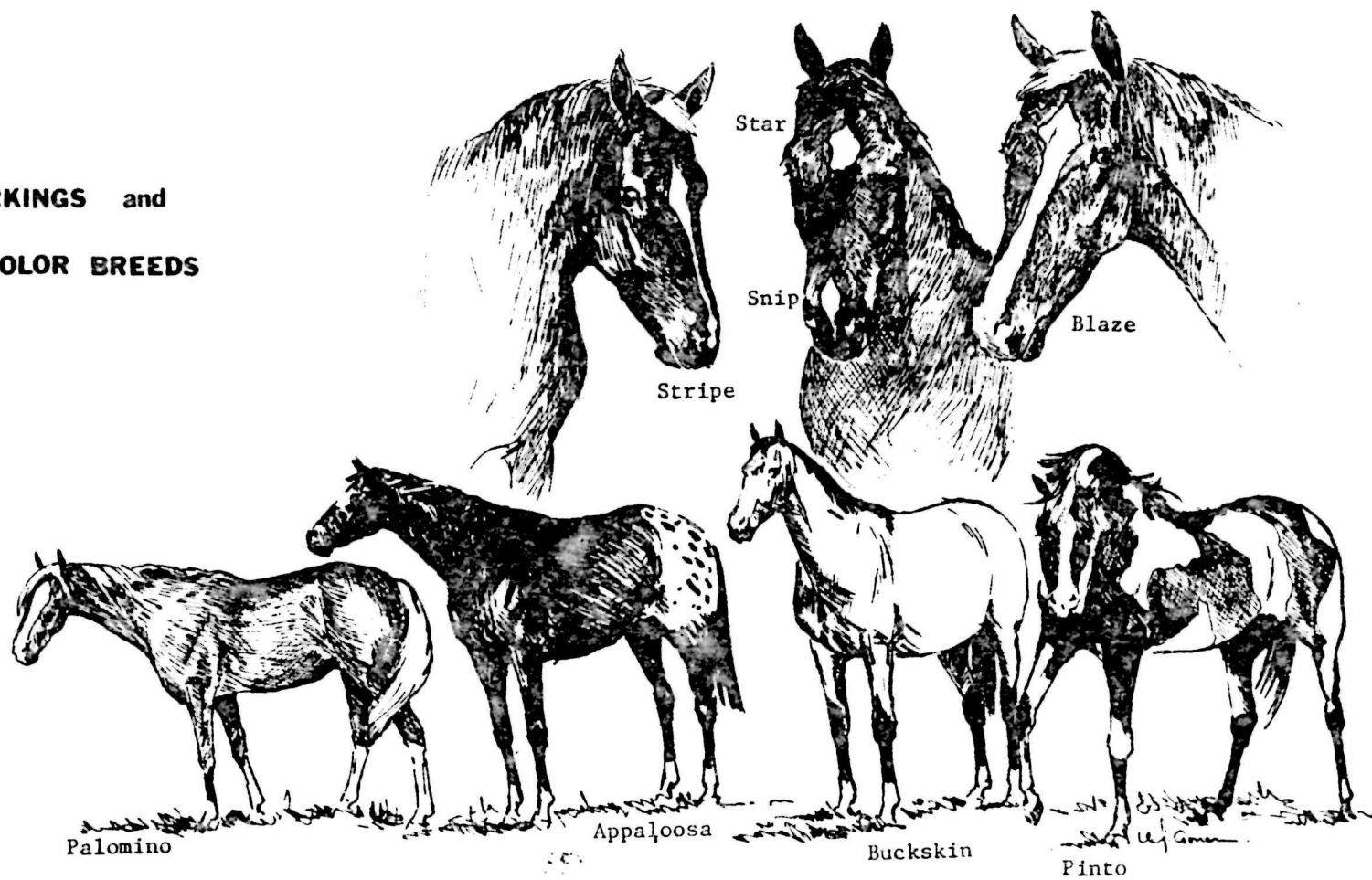
The building should be at least 12 feet high to the spring of the roof with damp proof walls. The roof should be sloped at an angle of not more than  $45^{\circ}$  and constructed of a material which maintains equable temperature in both hot and cold weather. It should be durable, noiseless and non-flammable. The floors should be on a solid foundation and raised above the outside ground level. They should slope from front to rear of stall to allow for sufficient drainage. Ventilation of the building is of great importance. Air should be changed often enough to keep it pure without allowing a draught over the horses. Windows should be hinged along the lower border so they open with an inward slant. The lower edge should be 8 feet from the floor and protected by iron bars on the inside. Sash windows are not suitable for a stable.

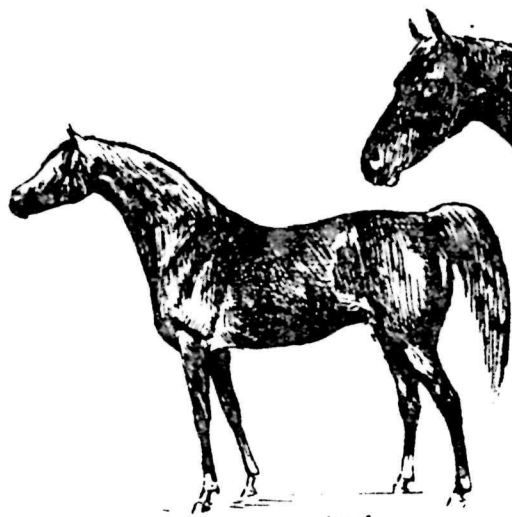
The box stall is preferred because it permits the horse freedom to move about. It helps prevent a horse from stocking-up when left in the stall and not being used. Box stalls should be at least 12 by 12 feet.

All fittings, e. g., latches, window fastenings, etc., in a stable must be flush with the walls or woodwork, or at least, must not offer any projections on which a horse could injure himself.

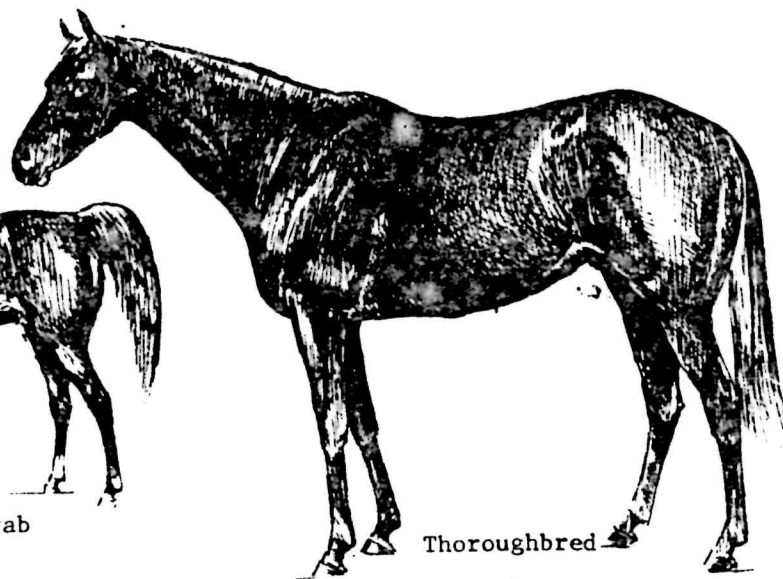
Electric light switches should be placed outside the stalls in a position where the horse could not interfere with them. All electric switches should be of a special "stable" type, designed to prevent electrocution should a shod horse seize them with his teeth.

**MARKINGS and  
COLOR BREEDS**





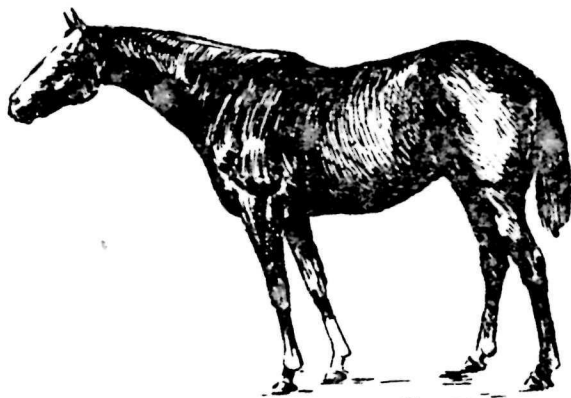
Arab



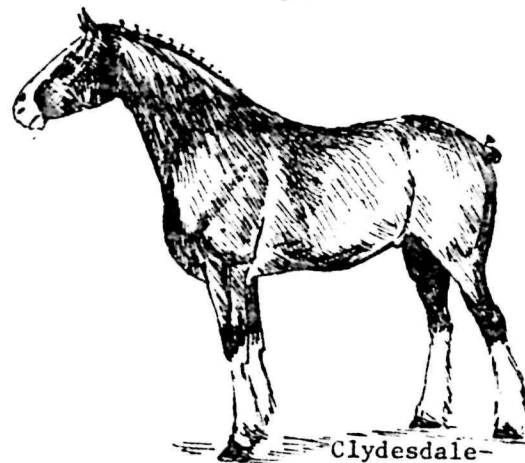
Thoroughbred



Morgan



Quarter Horse



Clydesdale-

*W. J. ...*

## XI. TRANSPORTATION OF HORSES

Preparation - Horses should be properly prepared for hauling depending on the individual horse. Shipping boots, blankets and tail wrappings should be used for long trips or on short trips if the horse is a bad hauler. All wrappings must be clean and in good repair. If the horse is a bad hauler, he should not be tacked before loading or while transporting.

Loading - Before loading, make certain the aisles and stalls of the van are clear. Know where you are going to place the horse in the van. Horses should be lead quietly up the ramp with a lead line of sufficient length to allow free movement of the horse's head. Whenever possible, have another officer assist in loading by following the horse up the ramp.

Hauling - Before moving the van or trailer, make certain that all equipment is operating safely and properly. Check the safety chains and electrical hook-up on the trailer. Check behind before backing. Adjust mirrors for your use. Know the route you will take. Drive so as to eliminate any swaying or sudden stops which would tend to excite the horse.

Shipping - Whenever horses are to be shipped, they should be prepared and loaded as outlined above. Prearranged plans must be made regarding feeding, watering, exercising and stabling when horses are shipped long distances. Horses should be exercised for at least ten minutes every four hours on a lounge line when hauled. During long shipping, horses have a tendency to become van sour and refuse to load. By lounging them before feeding, they become hungry and load easier. The feeding schedule should remain as regular as before shipping. It is advisable to feed horses while on the van after exercising them. This will assist in loading if the horses knows there is feed on the van.

It is important to know the various state regulations when transporting horses across state lines. Most veterinarians can furnish this information. Avoid stabling horses in stables that have not been disinfected or are not certified free of disease.

## XII. EMERGENCY EVACUATION OF STABLES

In the event that it becomes necessary to evacuate a stable due to fire, flooding, or other disaster, an evacuation plan should be prepared for each stable.

When the first indication of an emergency exists, the appropriate authority should be notified of the type of emergency such as the fire department. Before entering the stable, it is important to analyze the hazard involved. Do not enter the stable if your own safety will be jeopardized. Do not panic or become over excited because the horses will sense this and add to the existing problems.

Use extreme caution around the horses when entering the stalls. Never release the horses from the stables and attempt to drive them out of the barn. The horse's natural instinct to return to the stable. Horses should be led quietly away from the stable in an expeditious manner.

Once away from the danger, the horses should be tied at least twenty feet apart to prevent kicking and injury. After the situation is under control, the horses should be transported to another stable where they can be quieted down and handled more safely.

Always remember, the key to a safe and expeditious evacuation is CALMNESS.