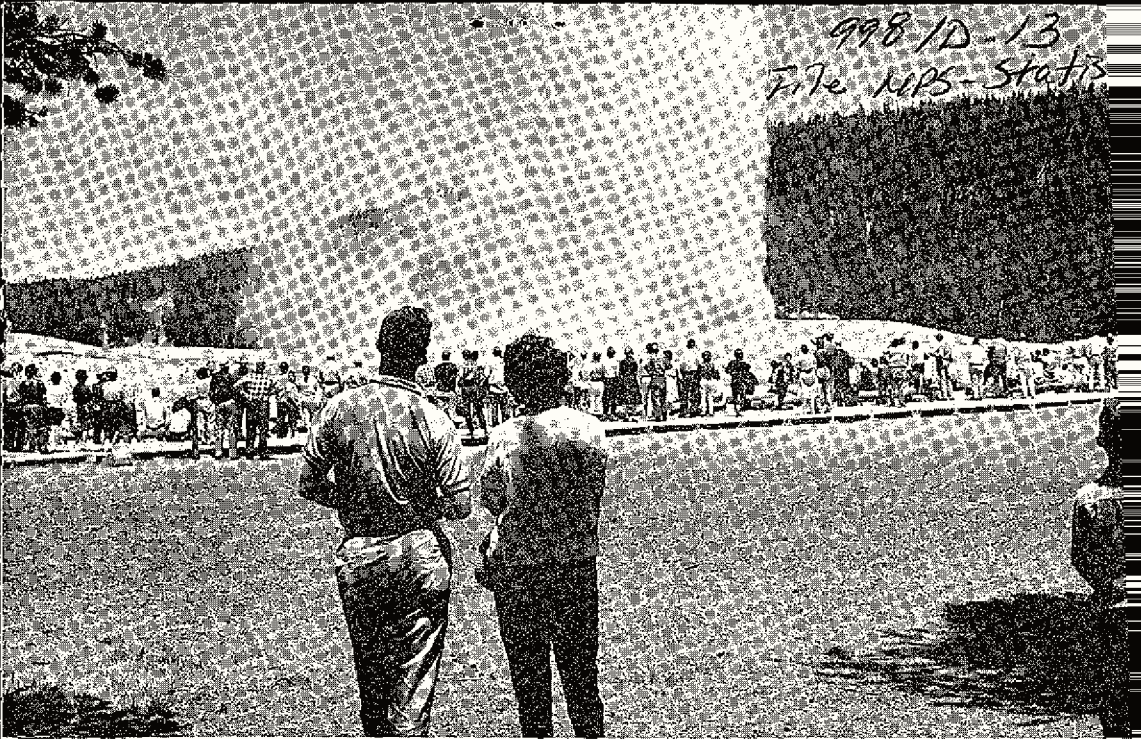


998 ID-13  
File NPS-Stats



## public use of the national parks; a statistical report

August 1963

PLEASE RETURN TO:

TECHNICAL INFORMATION CENTER  
DENVER SERVICE CENTER  
NATIONAL PARK SERVICE

SCANNED

11/2/01

U.S. DEPARTMENT OF THE INTERIOR • NATIONAL PARK SERVICE

# FOREWORD

The National Park Service, a bureau of the Department of the Interior, administers Federally owned scenic, scientific, historic, and recreational areas established by statutory authority for the benefit and enjoyment of the people, and the National Capital Parks, a metropolitan park system comprising over 750 urban and rural parks located in and around Washington, D. C. exclusive of the National Memorials located therein.

This monthly report contains data reflecting total use by the public of the national parks. Data are in thousands of visits. Statistically, a "Visit" is the entry of any person into a national park such that he makes some use of the services or facilities provided by the National Park Service. "Overnight stays" include park visitors in campgrounds and in commercial accommodations within the parks. A few parks are excluded from the reporting system for reasons of impracticality in producing consistent or meaningful data.

TABLE 1 - CLASSES OF AREAS ADMINISTERED BY THE NATIONAL PARK SERVICE

CODE	CLASS OF AREA	NUMBER OF AREAS	
		ADMINISTERED	REPORTING VISITS
NP	National Parks	31	31
NB	National Battlefields	5	5
NBP	National Battlefield Parks	3	3
NBS	National Battlefield Sites	3	3
NC	National Cemeteries	10	10
NHS	National Historic Sites	21	15
NHP	National Historical Parks	10	9
NMem	National Memorials	15	14
NMemP	National Memorial Park	1	1
NMP	National Military Parks	11	11
NM	National Monuments	78	75
NRA	National Recreation Areas	4	3
NS	National Seashore	4	1
	National Parkways	3	2
	National Capital Park System	1	1
	White House	1	0
	TOTAL	201	184

TABLE 2a - SUMMARY OF PUBLIC USE, BY REGIONS, CURRENT MONTH

REGION	VISITS (THOUSANDS)			OVERNIGHT STAYS (THOUSANDS)		
	AUGUST 1963	AUGUST 1962	% Change From 1962	AUGUST 1963	AUGUST 1962	% Change From 1962
ALL CLASSES OF PARKS - TOTAL 1/	17,272.5	16,610.3	+ 4.0	3,379.3	3,021.9	+11.8
Southeast Region	6,125.5	5,954.2	+ 2.9	436.6	426.7	+ 2.3
Midwest Region	3,594.1	3,429.8	+ 4.8	1,003.2	875.9	+14.5
Southwest Region	1,981.1	1,751.5	+13.1	371.2	324.5	+14.4
Western Region	2,383.2	2,703.8	-11.9	1,249.0	1,116.3	+11.9
Northeast Region	1,915.6	1,757.1	+ 9.0	319.3	278.4	+14.7
National Capital Region	2,833.8	2,289.7	+23.8	26.6	60.8	-88.0
TOTAL, ALL REGIONS	18,833.3	17,886.1	+ 5.3	3,405.8	3,082.7	+10.5

TABLE 2b - SUMMARY OF PUBLIC USE, BY REGIONS, CUMULATIVE, YEAR TO DATE

REGION	VISITS (THOUSANDS)			OVERNIGHT STAYS (THOUSANDS)		
	JAN-AUG 1963	JAN-AUG 1962	% Change From 1962	JAN-AUG 1963	JAN-AUG 1962	% Change From 1962
ALL CLASSES OF PARKS - TOTAL 1/	70,715.8	67,153.4	+ 5.3	9,497.6	8,741.0	+ 8.7
Southeast Region	28,610.0	27,168.0	+ 5.3	1,336.4	1,223.3	+ 9.2
Midwest Region	10,635.5	10,123.1	+ 5.1	2,581.9	2,399.0	+ 7.6
Southwest Region	9,214.0	7,874.7	+17.0	1,669.3	1,365.7	+22.2
Western Region	8,588.8	9,330.5	- 8.0	3,109.6	3,016.7	+ 3.1
Northeast Region	7,663.2	7,232.5	+ 6.0	800.4	736.4	+ 8.7
National Capital Region	12,778.0	12,667.4	+ 0.9	105.3	517.2	-79.6
TOTAL, ALL REGIONS	77,489.4	74,396.3	+ 4.2	9,602.9	8,962.7	+ 7.1

1/ Includes all classes of parks listed in Table 1 except National Capital Parks, for which see Table 3. This total is comparable with "ALL CLASSES - TOTAL" as published prior to 1963.

TABLE 3 - NUMBER OF VISITS AND OVERNIGHT STAYS, INDIVIDUAL AREAS

AREA	VISITS (THOUSANDS)				OVERNIGHT STAYS (THOUSANDS)			
	AUGUST 1963	JAN-AUG 1962	AUGUST 1963	JAN-AUG 1962	AUGUST 1963	JAN-AUG 1962	AUGUST 1963	JAN-AUG 1962
Abraham Lincoln Birthplace NHS, Kentucky	71.9	74.2	248.0	258.3				
Acadia NP, Maine	396.2	319.1	1,328.1	1,135.1	304.5	269.0	756.1	709.0
Adams NHS, Massachusetts	3.0	2.9	9.4	9.0				
Andrew Johnson NM, Tennessee	6.0	6.6	33.6	34.9				
Antietam NBS & NC, Maryland	16.7	27.8	78.1	114.3				
Appomattox Court House NHP, Virginia	28.3	32.7	106.5	124.6				
Arches NM, Utah	20.0	16.8	87.3	77.1	2.0	1.7	7.7	6.5
Aztec Ruins NM, New Mexico	10.8	9.7	35.3	33.6				
Badlands NM, South Dakota	284.7	272.8	865.8	856.0	17.5	20.0	40.8	54.2
Bandelier NM, New Mexico	24.9	21.8	91.1	80.4	8.2	6.0	22.1	18.6
Battleground NC, District of Columbia	0.3	0.3	2.0	2.0				
Big Bend NP, Texas	13.2	10.5	80.1	63.7	9.9	7.9	51.2	37.9
Big Hole Battlefield NM, Montana	4.5	4.2	11.5	10.8	0.1	0	0.1	0
Black Canyon of the Gunnison NM, Colorado	42.5	37.8	117.2	99.8	5.8	3.0	13.9	8.6
Blue Ridge Parkway, Virginia-North Carolina	1,246.8	1,268.4	5,038.1	4,700.9	57.0	51.5	149.5	134.0
Booker T. Washington NM, Virginia	1.8	1.5	11.8	8.1				
Brices Cross Roads NBS, Mississippi	0.2	0.2	2.2	1.7				
Bryce Canyon NP, Utah	70.0	61.9	238.5	207.5	30.8	26.9	93.8	77.5
Buck Island Reef NM, Virgin Islands	0.7	0.6	6.6	5.4	0	0	*	0
Cabrillo NM, California	79.8	71.8	772.1	616.7				
Canyon de Chelly NM, Arizona	6.5	4.7	20.5	19.2	2.5	3.1	11.0	10.3
Cape Hatteras NS, North Carolina	215.6	149.5	690.7	521.2	86.7	95.3	239.9	226.8
Capitol Reef NM, Utah	16.7	28.9	71.6	120.7	1.9	1.9	7.1	5.8
Capulin Mountain NM, New Mexico	11.1	9.9	34.5	32.4				
Carlsbad Caverns NP, New Mexico	125.6	118.2	488.3	458.4				
Casa Grande Ruins NM, Arizona	9.2	6.1	73.5	65.4				
Castillo de San Marcos NM, Florida	78.4	74.8	368.0	342.6				
Cedar Breaks NM, Utah	37.0	23.0	106.0	62.9	1.6	1.8	4.9	3.9

Chaco Canyon NM, New Mexico	5.1	2.5	28.4	14.9	0.5	0.3	1.6	1.0
Chalmette NHP, Louisiana	45.5	39.6	402.4	294.5				
Channel Islands NM, California 2/	0.2		0.9		0.1		0.3	
Chickamauga & Chattanooga NMP, Ga.-Tenn.	194.3	189.7	828.6	820.8				
Chiricahua NM, Arizona	6.7	6.6	39.8	37.6	1.7	1.6	7.9	7.3
Christiansted NHS, Virgin Islands	0.5	0.4	3.6	3.0				
City of Refuge NHP, Hawaii	9.0	7.1	37.2	27.1	0.2	0.3	0.6	1.1
Colonial NHP & Yorktown NC, Virginia	771.0	750.1	4,293.4	4,185.1				
Colorado NM, Colorado	51.3	42.8	211.8	197.3	4.9	4.1	12.1	10.9
Coronado NMem, Arizona	2.0	1.8	18.3	13.5				
Coulee Dam NRA, Washington	215.8	227.2	553.2	594.6	28.0	24.4	63.5	62.9
Cowpens NBS, South Carolina	2.5	1.4	12.0	6.1				
Crater Lake NP, Oregon	158.1	187.9	376.7	490.0	31.7	36.8	60.7	78.8
Craters of the Moon NM, Idaho	35.4	41.8	116.0	136.7	4.5	4.5	13.1	13.5
Cumberland Gap NHP, Ky.-Tenn.-Va.	33.5	31.8	121.3	116.9	3.2	1.9	7.2	2.1
Custer Battlefield NM, Montana	44.3	46.2	141.7	150.4				
Custis-Lee Mansion NMem, Virginia	68.3	68.4	365.1	369.6				
Death Valley NM, California-Nevada	16.0	16.1	266.5	223.7	1.0	1.0	113.6	107.9
De Soto NMem, Florida	4.1	4.0	57.1	55.0				
Devils Postpile NM, California	28.4	21.8	52.9	49.9	4.6	5.4	7.9	8.5
Devils Tower NM, Wyoming	33.4	33.0	102.9	104.3	5.3	5.5	15.3	14.9
Dinosaur NM, Utah-Colorado	52.8	65.4	183.8	220.4	5.8	10.2	17.3	35.8
Edison NHS, New Jersey	2.4	3.2	26.3	26.3	0	0	0	*
Effigy Mounds NM, Iowa	16.1	14.3	44.5	35.2				
El Morro NM, New Mexico	3.1	3.8	12.7	15.8	0.3	0.1	1.0	0.7
Everglades NP, Florida	49.0	46.7	480.5	471.0	7.0	7.1	90.9	73.0
Federal Hall NMem, New York	7.0	7.2	45.8	48.8				
Fort Caroline NMem, Florida	4.8	4.1	36.0	33.2				

TABLE 3 - continued

AREA	VISITS (THOUSANDS)				OVERNIGHT STAYS (THOUSANDS)			
	AUGUST 1963	JAN-AUG 1962	AUGUST 1963	JAN-AUG 1962	AUGUST 1963	JAN-AUG 1962	AUGUST 1963	JAN-AUG 1962
Fort Clatsop NMem, Oregon	18.2	15.0	56.3	58.2				
Fort Donelson NMP & NC, Tennessee	60.7	64.8	403.3	393.4				
Fort Frederica NM, Georgia	21.0	20.5	107.1	106.1				
Fort Jefferson NM, Florida	1.1	0.3	20.4	6.8	0.7	0.3	14.0	6.0
Fort Laramie NHS, Wyoming	16.3	14.8	52.7	52.2				
Fort Matanzas NM, Florida	9.1	9.8	60.2	56.8				
Fort Mchenry NM, Maryland	89.7	50.2	386.2	364.9				
Fort Necessity NB, Pennsylvania	45.0	46.0	144.5	127.4	0.6	0	2.0	0
Fort Pulaski NM, Georgia	26.0	26.9	129.6	126.7				
Fort Raleigh NHS, North Carolina	52.6	42.9	122.7	99.5				
Fort Sumter NM, South Carolina	27.1	10.5	115.8	50.0				
Fort Union NM, New Mexico	2.5	2.3	9.3	9.5				
Fort Vancouver NHS, Washington	2.8	7.6	48.4	39.4				
Fredericksburg & Spotsylvania NMP & NC, Va.	54.6	50.8	324.1	367.9				
General Grant NMem, New York	36.3	38.9	214.1	198.9				
George Washington Birthplace NM, Virginia	9.9	17.2	68.8	97.8				
George Washington Carver NM, Missouri	5.9	4.3	34.2	23.3				
Gettysburg NMP & NC, Pennsylvania	342.1	345.1	1,568.9	1,509.8	1.0	1.4	14.5	8.3
Gila Cliff Dwellings NM, New Mexico	2.2	0.6	7.2	2.2				
Glacier NP, Montana	281.5	319.0	730.8	880.7	127.8	117.9	304.0	305.9
Glacier Bay NM, Alaska	0.2	0.1	0.7	0.9	0.3	0.1	1.2	0.5
Gran Quivira NM, New Mexico	1.5	1.4	7.2	7.3	*	*	0.2	0.1
Grand Canyon NM, Arizona	0.2	0.1	0.6	0.6	0.1	*	0.2	0.2
Grand Canyon NP, Arizona	324.7	300.0	1,199.3	1,139.5	135.4	124.4	525.1	456.2
Grand Portage NM, Minnesota	12.4	12.3	32.4	24.3				
Grand Teton NP, Wyoming	599.1	538.2	1,817.2	1,541.9	179.8	165.3	456.5	400.9
Great Sand Dunes NM, Colorado	29.2	23.6	83.9	75.7	6.1	4.3	13.7	10.8
Great Smoky Mountains NP, N. C.-Tenn.	1,245.8	1,221.8	4,083.8	4,043.0	169.0	163.9	472.4	450.9

Guilford Courthouse NMP, North Carolina	52.2	55.1	351.3	341.8				
Haleakala NP, Hawaii	10.2	8.3	50.9	50.2	0.5	0.6	1.5	1.7
Hampton NHS, Maryland	1.4	1.6	9.5	8.9				
Harpers Ferry NHP, West Virginia	103.3	92.7	480.0	466.6				
Hawaii Volcanoes NP, Hawaii	69.6	44.8	336.7	301.0	7.0	8.0	37.2	36.3
Home of Franklin D. Roosevelt NHS, New York	56.3	49.4	198.0	170.5				
Homestead NM, Nebraska	3.9	4.9	20.4	31.0				
Hopewell Village NHS, Pennsylvania	24.3	21.2	88.2	86.4				
Horseshoe Bend NMP, Alabama	4.0	1.6	19.2	8.6				
Hot Springs NP, Arkansas	237.8	256.5	1,342.2	1,368.9	6.3	3.3	24.4	17.3
House Where Lincoln Died NMem, D. C.	20.2	30.9	112.0	137.9				
Hovenweep NM, Utah-Colorado	0.8	0.7	4.1	3.0	0.1	0.2	0.4	0.4
Independence NHP, Pennsylvania	412.6	398.9	1,681.8	1,614.1				
Isle Royale NP, Michigan	3.5	2.6	7.4	5.1	13.2	8.1	27.8	19.1
Jefferson Nat'l Expansion Memorial NHS, Mo.	29.6	10.8	184.1	54.7				
Jewel Cave NM, South Dakota	16.0	15.7	42.3	40.3	0.4	0.5	0.9	1.1
Joshua Tree NM, California	16.6	15.2	239.8	221.4	0.8	0.6	36.3	28.5
Katmai NM, Alaska	0.2	0.1	0.6	0.3	0.4	0.2	1.3	0.9
Kennesaw Mountain NBP, Georgia	12.8	19.2	118.0	121.9				
Kings Canyon NP, California	188.8	181.4	577.5	640.9	144.4	88.1	241.6	183.9
Kings Mountain NMP, South Carolina	52.6	40.1	270.3	214.4				
Lake Mead NRA, Arizona-Nevada	335.6	312.2	2,504.1	1,862.8	52.8	50.5	541.1	417.8
Lassen Volcanic NP, California	108.5	112.9	292.7	323.8	62.0	54.3	118.7	115.5
Lava Beds NM, California	15.8	13.9	54.3	48.8	1.4	1.5	3.7	3.8
Lehman Caves NM, Nevada	7.6	5.8	26.8	20.6				
Lincoln Memorial NMem, District of Columbia	686.2	381.3	2,704.2	2,172.1				
Lincoln Museum NMem, District of Columbia	32.9	44.4	195.7	217.5				
Mammoth Cave NP, Kentucky	152.9	118.6	448.9	449.8	28.0	30.0	94.9	89.4



TABLE 3 - continued

AREA	VISITS (THOUSANDS)				OVERNIGHT STAYS (THOUSANDS)			
Manassas NBP, Virginia	35.9	32.8	176.0	151.1				
Mesa Verde NP, Colorado	89.3	71.5	264.8	213.0	38.5	34.2	114.9	99.0
Montezuma Castle NM, Arizona	29.5	29.1	167.9	165.0				
Moore's Creek NMP, North Carolina	3.2	3.3	19.8	18.9				
Morristown NHP, New Jersey 3/	52.9	50.0	322.1	309.0				
Mound City Group NM, Ohio	7.2	5.4	30.5	22.1				
Mount McKinley NP, Alaska	6.3	6.0	17.4	15.7	9.3	7.9	24.1	21.3
Mount Rainier NP, Washington	338.2	448.0	1,128.4	1,402.4	36.6	46.1	79.0	100.9
Mount Rushmore NMem, South Dakota	376.8	361.3	1,103.6	1,048.4				
Muir Woods NM, California	85.6	88.8	416.4	395.7				
Natchez Trace Parkway, Ala.-Miss.-Tenn.	503.1	585.5	3,576.4	3,331.0	0.3	0.1	1.0	0.6
National Capital Parks, D.C.-Md.-Va.	1,560.9	1,275.9	6,773.6	7,242.9	26.6	60.8	105.3	221.7
Natural Bridges NM, Utah	2.1	1.6	8.5	6.9	0.3	0.3	0.9	0.9
Navajo NM, Arizona	1.2	0.8	5.7	3.2	0.7	0.5	2.4	1.7
Ocmulgee NM, Georgia	7.9	7.2	51.1	50.5				
Olympic NP, Washington	392.4	608.1	1,210.2	1,666.2	104.0	92.0	218.1	214.4
Oregon Caves NM, Oregon	45.8	44.5	106.1	111.2	2.7	2.8	5.5	6.4
Organ Pipe Cactus NM, Arizona	21.9	19.2	229.8	202.1	0.6	0.3	29.7	25.6
Pea Ridge NMP, Arkansas	6.5	4.5	34.5	29.5				
Perry's Victory NM, Ohio	29.1	26.9	65.2	62.8				
Petersburg NB & Poplar Grove NC, Virginia	88.5	71.0	607.7	558.6				
Petrified Forest NP, Arizona	156.5	141.8	634.3	576.1				
Pinnacles NM, California	7.7	7.2	71.1	60.2	2.1	1.6	19.8	14.6
Pipe Spring NM, Arizona	4.4	3.0	20.0	13.7	0.3	0.2	1.1	1.4
Pipestone NM, Minnesota	52.2	46.8	157.2	137.6				
Platt NP, Oklahoma	287.4	231.7	1,196.0	1,016.6	34.2	29.3	99.6	85.0
Richmond NBP, Virginia	39.9	32.8	226.8	173.7				
Rocky Mountain NP, Colorado	566.2	562.1	1,546.0	1,505.9	94.8	92.2	238.4	201.8



Russell Cave NM, Alabama	3.9	0.7	28.2	3.3				
Saguaro NM, Arizona	13.9	9.7	122.7	104.4				
Salem Maritime NHS, Massachusetts	49.3	35.4	108.6	81.9				
San Juan NHS, Puerto Rico	12.4	14.1	150.6	142.1				
Saratoga NHP, New York	22.9	19.2	73.3	58.1				
Scotts Bluff NM, Nebraska	18.8	15.8	75.9	71.8				
Sequoia NP, California	147.5	156.6	492.7	533.5	115.7	115.5	273.7	272.8
Shadow Mountain NRA, Colorado	226.3	179.3	603.7	527.3	24.4	19.6	64.2	47.7
Shenandoah NP, Virginia	375.3	385.6	1,458.6	1,369.7	71.4	68.2	193.1	171.7
Shiloh NMP & NC, Tennessee	78.5	77.7	569.6	543.2				
Sitka NM, Alaska	3.8	1.9	13.7	10.7				
Statue of Liberty NM, New York	179.7	181.1	677.2	695.5				
Stones River NB & NC, Tennessee	5.7	7.9	26.3	37.7				
Sunset Crater NM, Arizona	24.1	20.2	105.1	85.1				
Theodore Roosevelt NMemP, North Dakota	62.3	54.7	193.0	193.3	7.3	7.0	18.9	18.8
Thomas Jefferson NMem, District of Columbia	203.8	217.9	1,182.9	1,039.7				
Timpanogos Cave NM, Utah	38.7	31.3	127.9	101.9	2.8	2.2	8.4	6.8
Tonto NM, Arizona	4.5	3.2	50.6	39.6				
Tumacacori NM, Arizona	4.6	4.7	38.9	39.8				
Tupelo NB, Mississippi	0.1	0.1	0.6	0.7				
Tuzigoot NM, Arizona	5.9	5.4	28.9	25.0				
Vanderbilt Mansion NHS, New York	34.6	32.3	120.0	116.9				
Vicksburg NMP & NC, Mississippi	110.8	117.0	684.0	691.4				
Virgin Islands NP, Virgin Islands	7.8	7.0	64.0	36.8	6.8	5.1	49.2	51.3
Walnut Canyon NM, Arizona	13.9	15.8	62.6	59.7				
Washington Monument NMem, D. C.	261.3	270.6	1,442.5	1,485.8				
White Sands NM, New Mexico	65.6	58.9	311.7	287.0				
Whitman Mission NHS, Washington	9.0	6.9	54.0	42.1				

TABLE 3 - continued

AREA	VISITS (THOUSANDS)				OVERNIGHT STAYS (THOUSANDS)			
	AUGUST 1963	JAN-AUG 1962	AUGUST 1963	JAN-AUG 1962	AUGUST 1963	JAN-AUG 1962	AUGUST 1963	JAN-AUG 1962
Wind Cave NP, South Dakota	203.5	180.6	712.9	610.6	6.9	2.4	14.3	5.8
Wright Brothers NMem, North Carolina	70.8	64.3	211.8	192.8				
Wupatki NM, Arizona	11.0	11.3	59.2	52.1				
Yellowstone NP, Idaho-Montana-Wyoming	593.9	592.6	1,849.8	1,705.8	522.5	428.9	1,385.0	1,292.5
Yosemite NP, California	365.8	356.9	1,218.5	1,248.5	691.8	624.6	1,788.0	1,742.7
Yucca House NM, Colorado	*	*	0.1	*				
Zion NP, Utah	148.3	124.7	537.8	479.7	39.8	26.9	123.5	90.2

\* Less than 50 visits or overnight stays.

1/ See note on page 2.

2/ Channel Islands NM data were first published beginning January 1963.

3/ A correction just received from Morristown NHP indicates that visits for March 1963 were understated by 1.5 thousand persons. This amount should be added to the figures shown in the March report for that month's totals for both the park and the Northeast Region, as well as for the cumulative totals for year-to-date for the months of March through July. The monthly and cumulative totals shown in tables 2a and 2b for TOTAL, ALL REGIONS and for ALL CLASSES OF PARKS - TOTAL should also be increased accordingly.

# NATIONAL PARK SERVICE REGIONS



Visitors gather to see Old Faithful erupt--  
Upper Geyser Basin, Yellowstone National Park.



UNITED STATES  
DEPARTMENT OF THE INTERIOR  
NATIONAL PARK SERVICE

