

SINGER & CO. *Real Estate • Investments*

926 SOUTH ROBERTSON BOULEVARD • LOS ANGELES 35, CALIF. • OLYMPIA 7-0970

April 26, 1962

L58/11A

MAY - 1 1962

Assistant Secretary

Brown
(15)Department of the Interior
Washington, D. C.

Attention: Assistant Secretary, Public Land Management

Gentlemen:

We are enclosing herewith a brochure on a 5500 acre resort located in Northern California. This property is known as Richardson Mineral Springs.

As you will note, there are existing accommodations for approximately 500 people and there is tremendous potential for further development.

This property has a great deal of merit and we feel it will be of interest to you. We might also add that the owners may consider a trade and if you have some offering that you might suggest, we will be pleased to consider same.

Also, if you have any properties that you wish to sell, we would appreciate receiving information on same.

Your early reply will be appreciated.

Very truly yours,

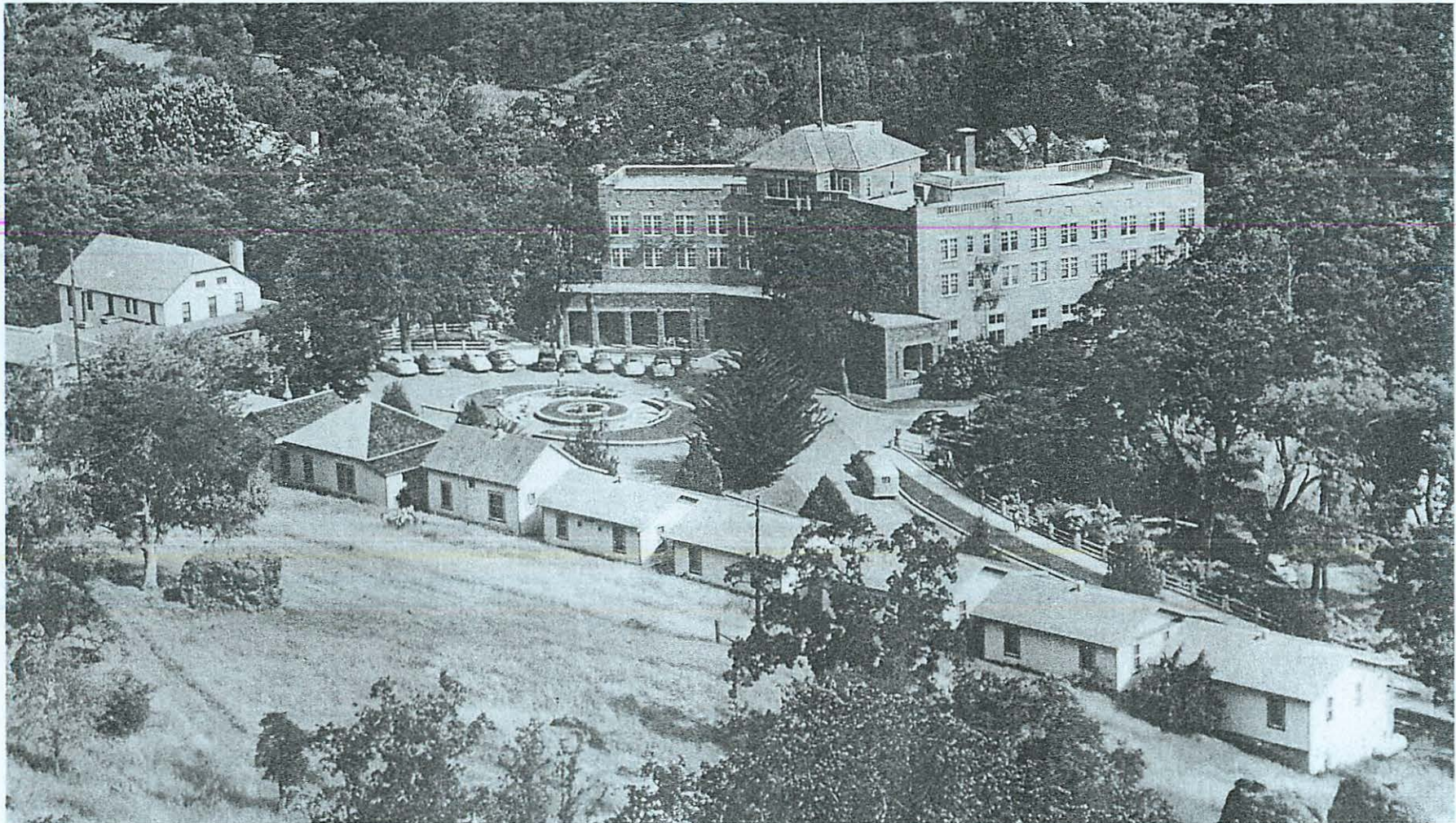
Samuel T. Singer
Samuel T. SingerSTS:me
encl.

AIR MAIL

5500 ACRE RESORT

Only 9 miles away from Chico, California, home of Chico State College;
about 1 1/2 hours from Sacramento

**AN OUTSTANDING INVESTMENT WITH
TREMENDOUS POTENTIAL FOR
FURTHER DEVELOPMENT**



A NEW OFFERING BY SINGER & CO., Realtors

926 South Robertson Blvd.

Los Angeles 35, California

OLympia 7-0970

"INCOME AND COMMERCIAL SPECIALISTS ON THE WEST COAST"

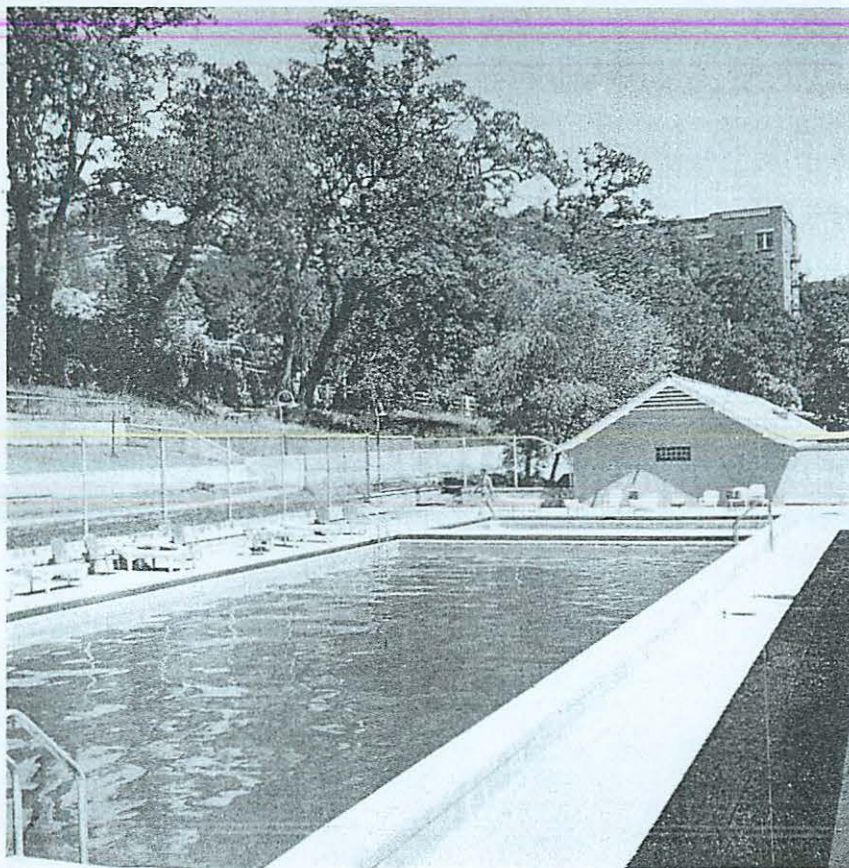
A United States Post Office, Service Station, Dairy and private two-story residence are situated on the property.

Four principal mineral springs are all in the vicinity of the main hotel. A modern new bath house with all facilities for private steam baths and mineral water baths is available.

There is plenty of recreation. Tennis, golfing, hunting, fishing and skiing are popular sports in the area.

An outdoor theatre under giant trees is also a unique feature in the summer.

All utilities are available.

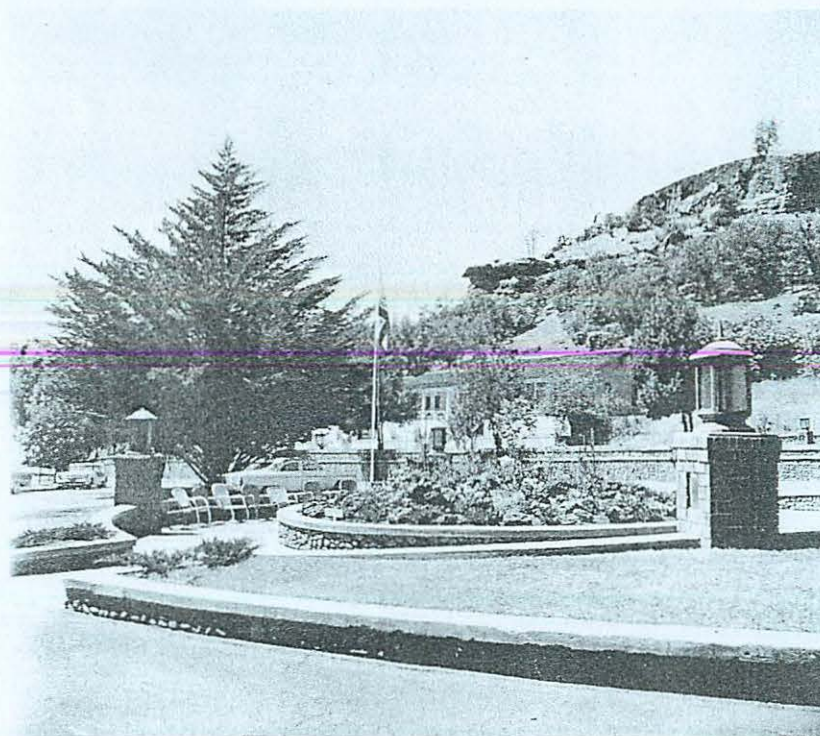


Beautiful heated swimming pool

Located in the center of a great cattle range and game preserve. Beautiful picturesque surroundings in the midst of breathtaking mountain and foothills.

Ideal Climatic conditions. No fog or smog.

Approximately 4 miles of roads. An airport about 2 miles away.



In our opinion, the value of the improvements exceeds the price of the entire property.

Price \$1,500,000.00

A Terrific Tax Shelter

Excellent Terms

MAY CONSIDER TRADE

For further details call or write

Mr. Sam Singer

Singer & Co., 926 South Robertson Blvd., Los Angeles 35, Calif.

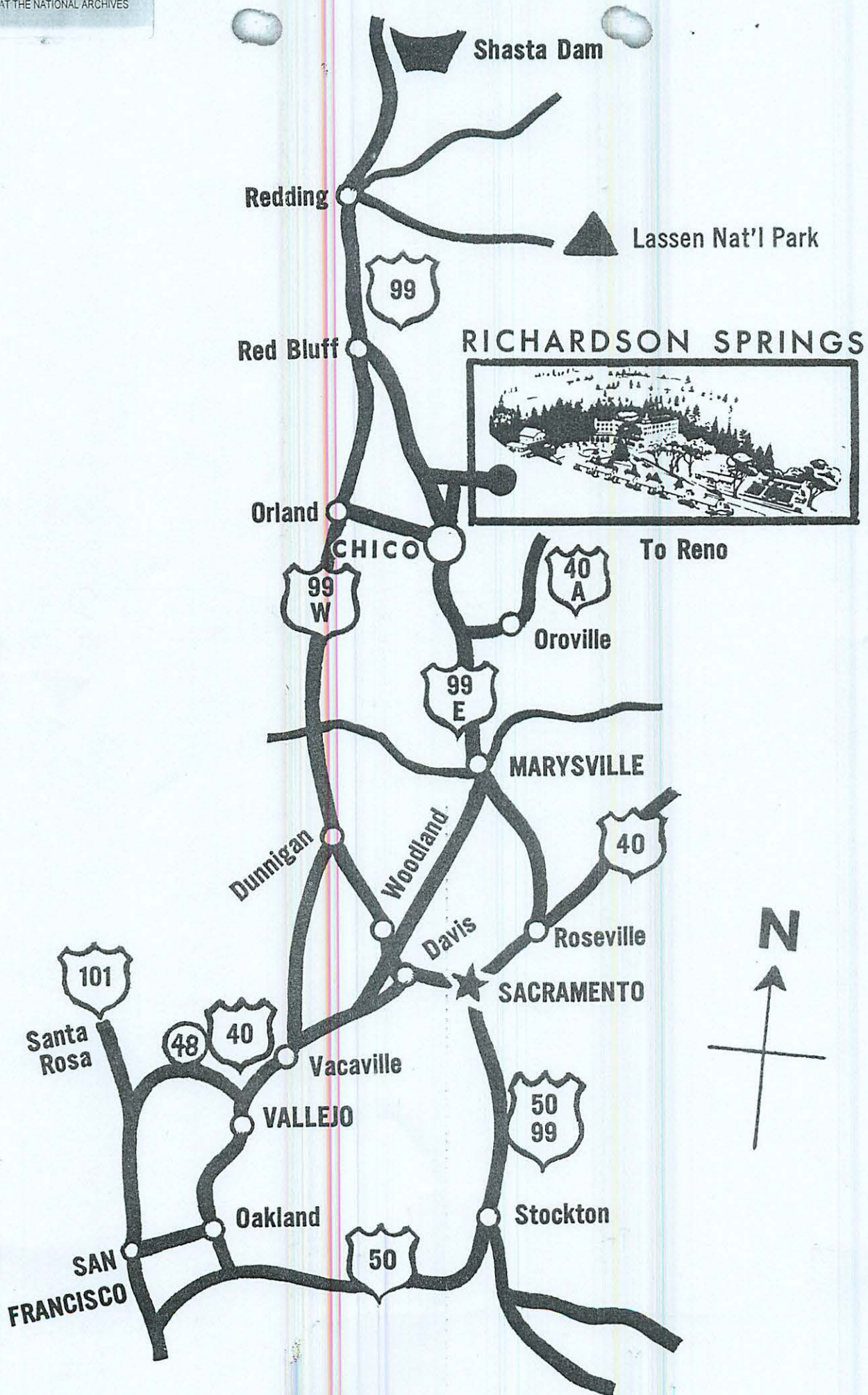
Olympia 7-0970

The data on the acreage indicated has been compiled from information shown on public records. The information contained herein has been furnished by sources we deem reliable. However, these are not representations or warranties. We invite personal inspection of the property by prospective buyers. This offering is subject to change of price, prior sale or withdrawal from the market without further notice.

he property is being operated as a Vacation and Health Resort. A magnificent three story brick hotel exceptionally well constructed, a lodge, additional cottages and employees' quarters. The facilities are deluxe and well maintained. It is estimated that 500 people can be accommodated.



One of several glamorous dining rooms in the hotel.



MAY 14 1962

T
Howell 5/10
BowenLSB-RNP

Mr. Samuel T. Singer
Singer and Company
926 South Robertson Boulevard
Los Angeles 35, California

Dear Mr. Singer:

Your letter of April 26 to Assistant Secretary Carver enclosing a brochure on the Richardson Mineral Springs in northern California has been referred to us for consideration.

We appreciate learning of the availability of the 5500-acre development, however, there are no programs in this Department that could utilize the resort property offered. The National Park System, for example, is comprised basically of areas of scenic, scientific or historic value of national significance. From the description given in the brochure, the Richardson Mineral Springs property does not appear to possess such values on a scale and of a quality to entitle it to this position of first rank in the Nation.

Properties to be sold to the public by the Federal Government are disposed of by the Bureau of Land Management and the General Services Administration, in accordance with specific laws. Information on such property disposition could best be obtained from the local office of the Bureau of Land Management in Los Angeles, and the General Services Administration's Regional Office located in San Francisco.

Sincerely yours,

SIGNED

Ben H. Thompson
Assistant Director

Copy to: Regional Director, Region Four, ⁽²⁾w/c of incoming letter
National Park and Recreation Area Planning w/c of incoming letter

JHowell:res 5/10/62