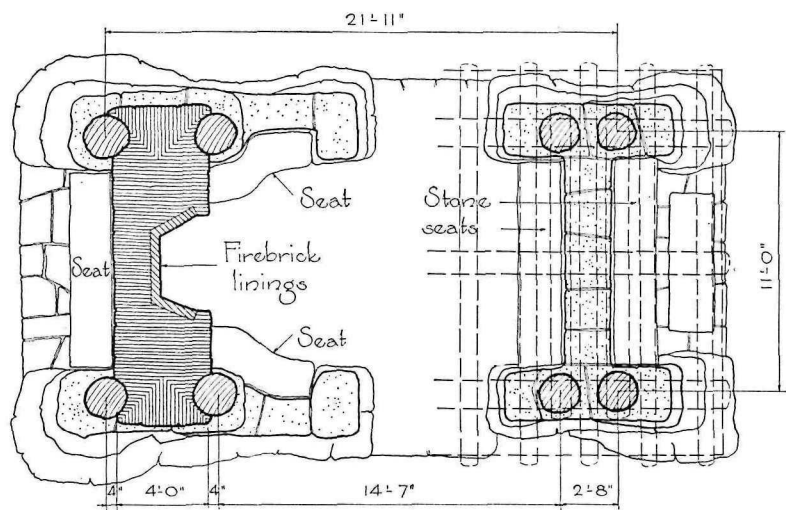


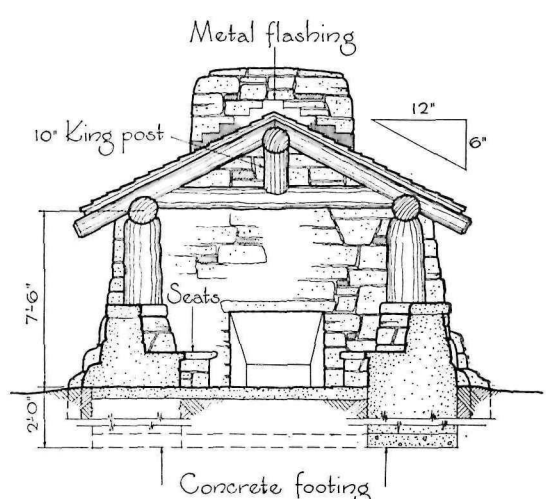
Picnic Shelter

Mohawk Metropolitan Park - - Tulsa, Oklahoma

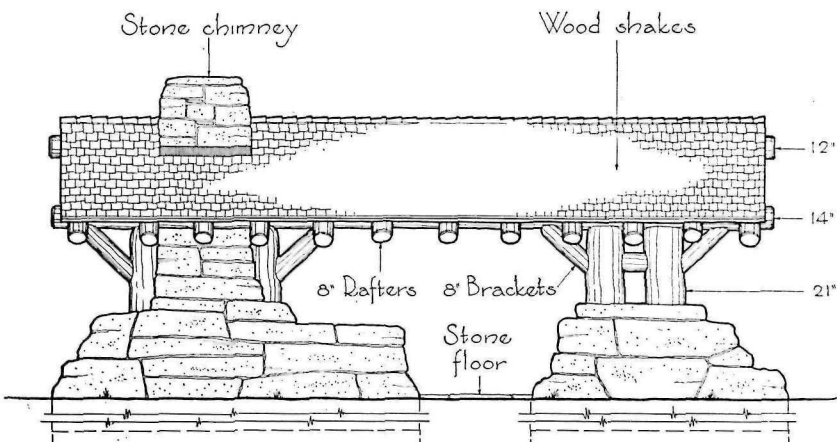
The reader should find some interest in tracing "family traits" through the several structures of this metropolitan park which are illustrated in other sections of this compilation. A boat-house, a refectory and an octagonal shelter have similar characteristics of materials, scale and details to stamp them as of one family, and a rather distinguished one, we should say. Overscale and a certain intimacy in plan are the predominant qualities of the member here shown.



PLAN

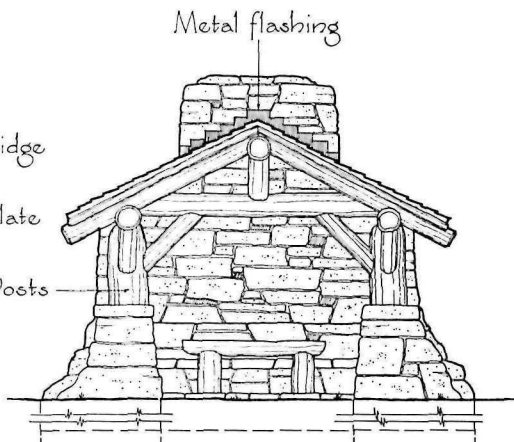


SECTION



SIDE ELEVATION

Scale 1/8" = 1'-0"

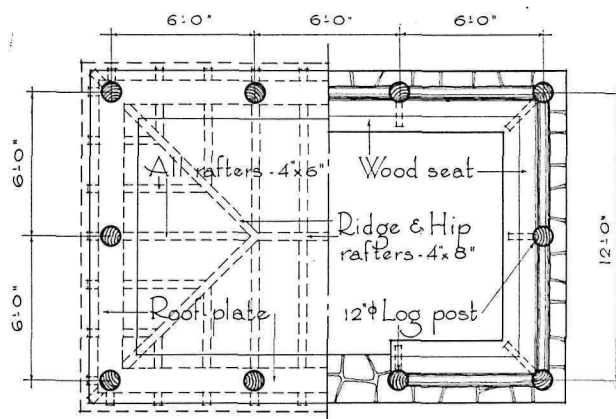


FRONT ELEVATION

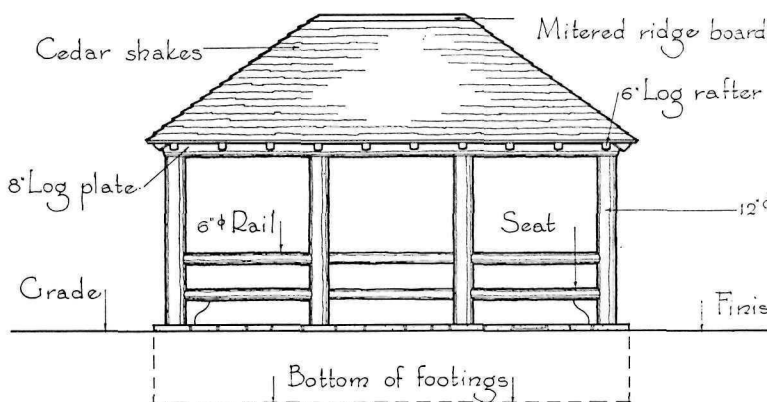


Picnic Shelter - Parvin State Park - New Jersey

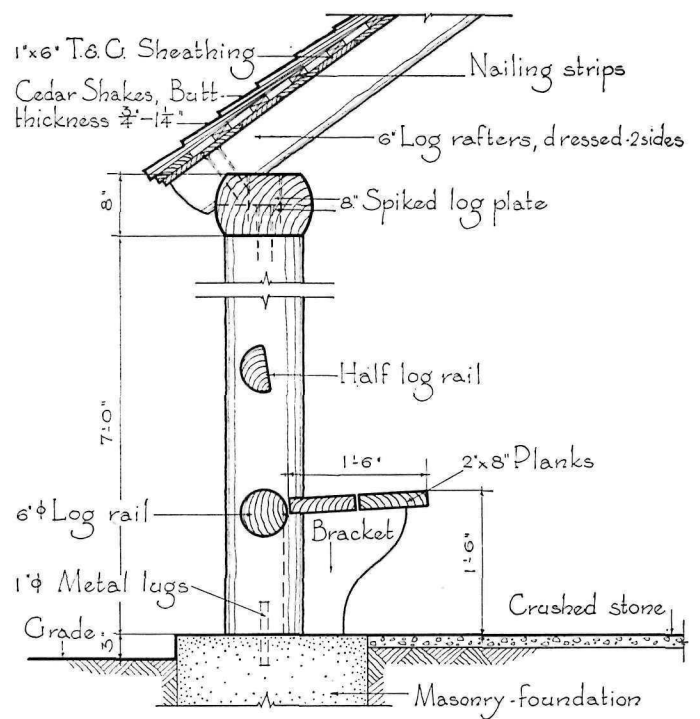
Examining an appealing simplicity of structure with a nice scale maintained in every detail. Of interest are the half log used as upper rail member serving as back for the seat that carries around the shelter and the trim cornice with close cropped rafter ends.



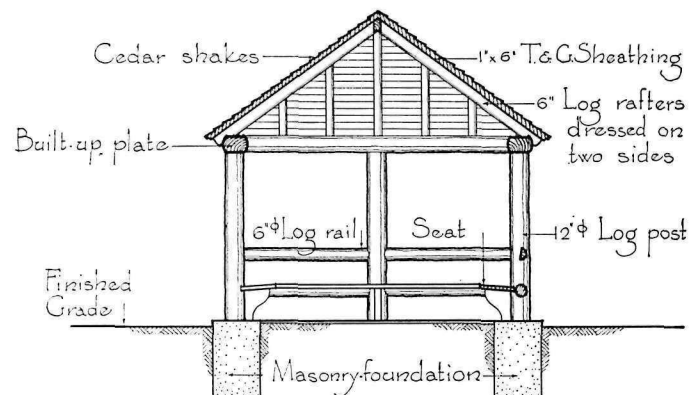
HALF ROOF & FLOOR PLAN



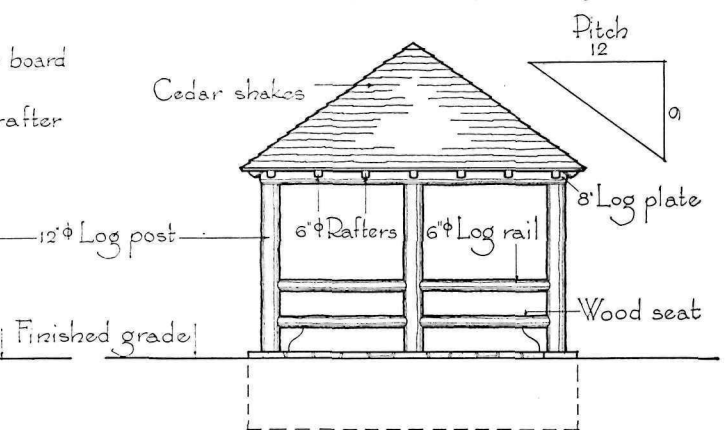
FRONT ELEVATION



CONSTRUCTION DETAIL



SECTION



SIDE ELEVATION

Scale 5/8"=1'-0"



Mount Penn Metropolitan Reservation, Reading, Pennsylvania



Mississippi Palisades State Park, Illinois

SMALL SHELTERS EAST OF THE MISSISSIPPI

The two shelters above-pictured reproduce with squared timbers the elements of the shelter detailed opposite, replacing hip roof with ridge roof. The shelter to the right of this caption and the basic shelter detailed are located in the same park, and the former is in every way an expanded version of the latter. Below are two shelters which, in spite of greater size and use of squared timbers, still seem closely related to the shelter detailed.



Parvin State Park, New Jersey



Stackhouse Metropolitan Park, Johnstown, Pennsylvania

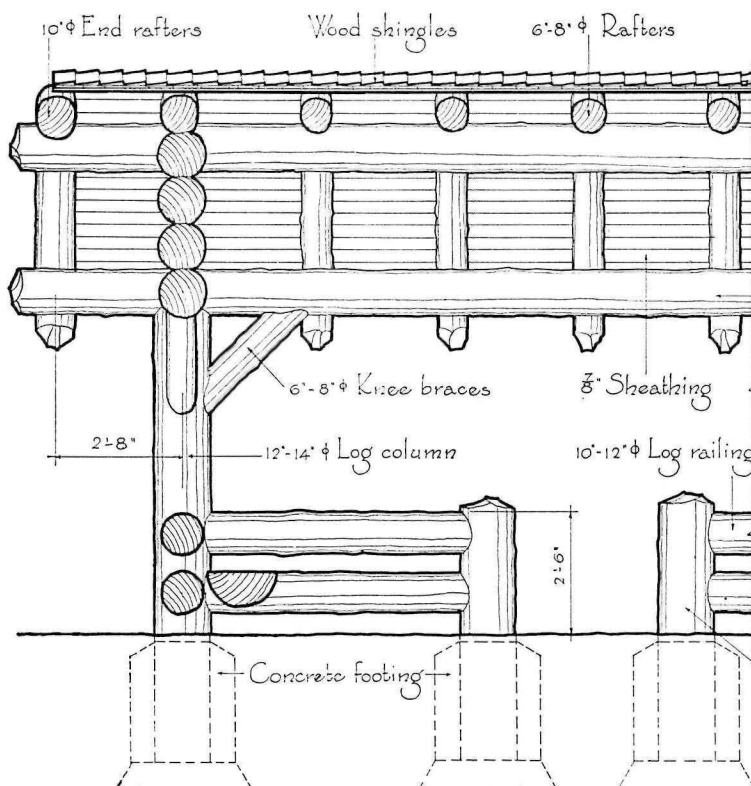
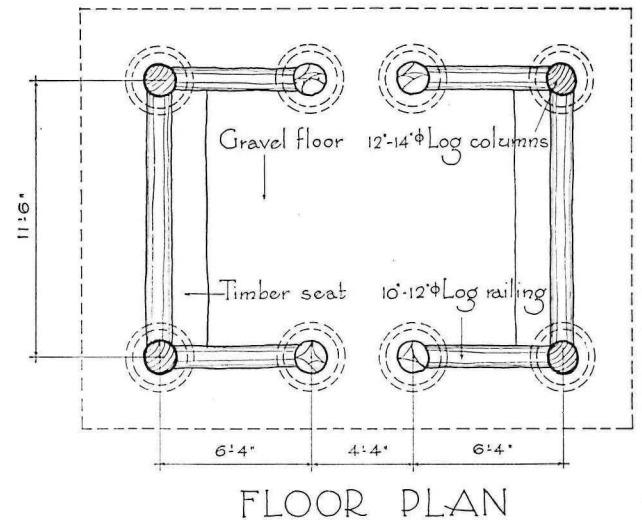


Giant City State Park, Illinois

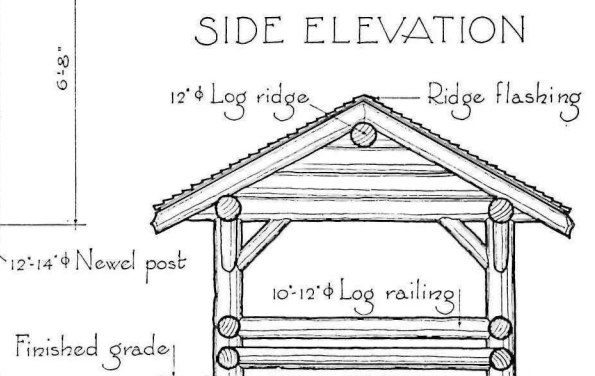
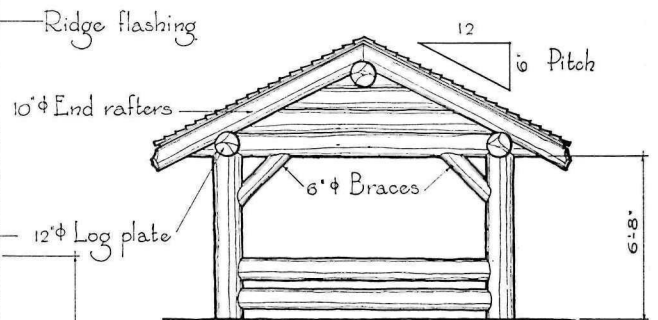


Small Shelter - Fargo Metropolitan Park - North Dakota

The best points of the so-called 'rustic' style are here well exemplified. The vigorous proportions of the timbers in the round, the free-hand eave and shingle course lines, the blunted rafter ends - all make for a well-proportioned and attractive small shelter in excellent scale, that would be appropriate far beyond the boundaries of the state in which it has been built.



Scale $\frac{1}{4}$ " = 1'-0"



Scale $\frac{1}{8}$ " = 1'-0"



Itasca State Park, Minnesota



Crowley's Ridge State Park, Arkansas

SMALL SHELTERS WEST OF THE MISSISSIPPI

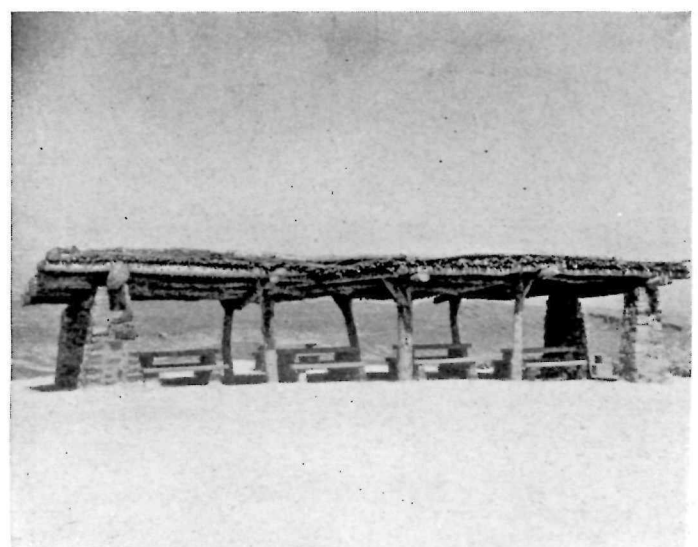
The general character of the shelter of the facing page is closely held to in the expanded developments pictured above and to the right. Freehand lines, scale of logs, snubbed rafter ends, and other points of regional character are unmistakably western and of the forested parts thereof. The counters of the Itasca building are removable, so that it may function normally as a shelter, and as a concession on "pageant" days. Below are illustrated two shelters in unforested parts of the Southwest. Scanty, twisted wood members and the use of masonry terminal piers in the Nevada example reflect natural environment.



Crowley's Ridge State Park, Arkansas



Colossal Caves County Park, Arizona

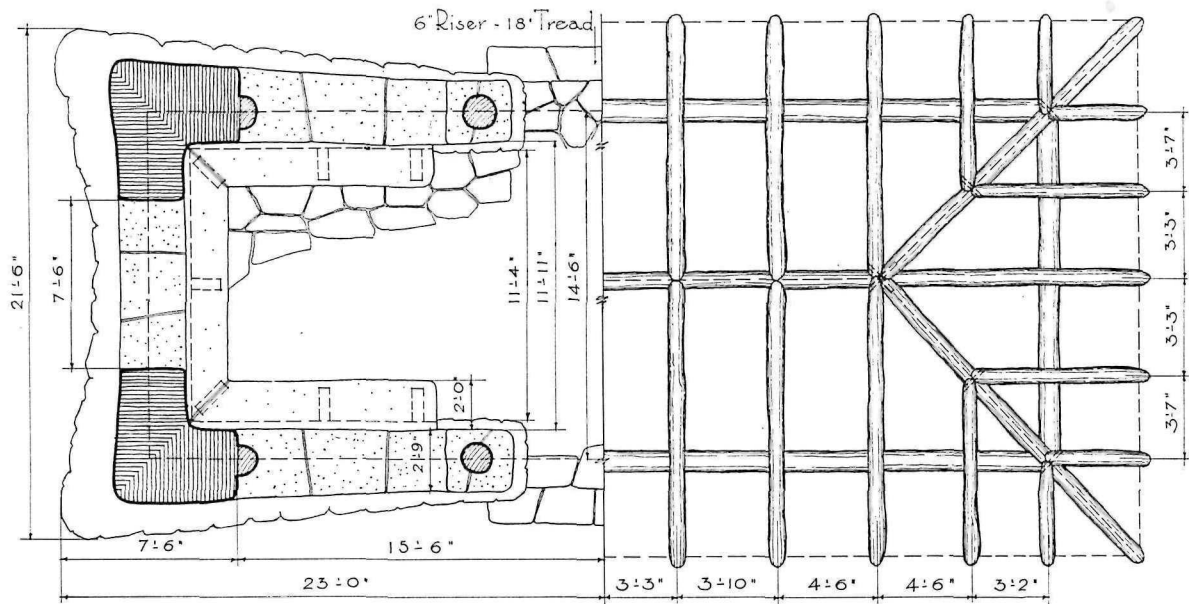


Valley of Fire State Park, Nevada



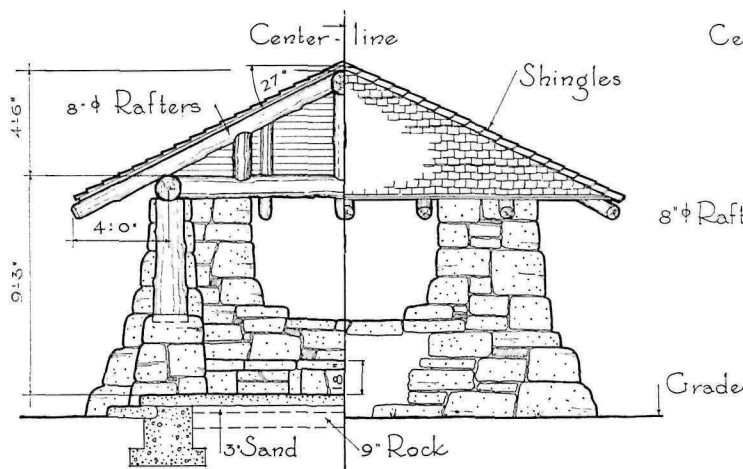
Shelter - Turner Falls State Park - Oklahoma

The carping critic may well skip this subject unless he would merely pause for breath. The free-hand lines of the shingle courses doubled every fourth or fifth course for scale and accent, the well-sealed pole rafter ends, the rugged informality and textural quality of the stone work, the batter of the wall - all combine to the success of this structure.

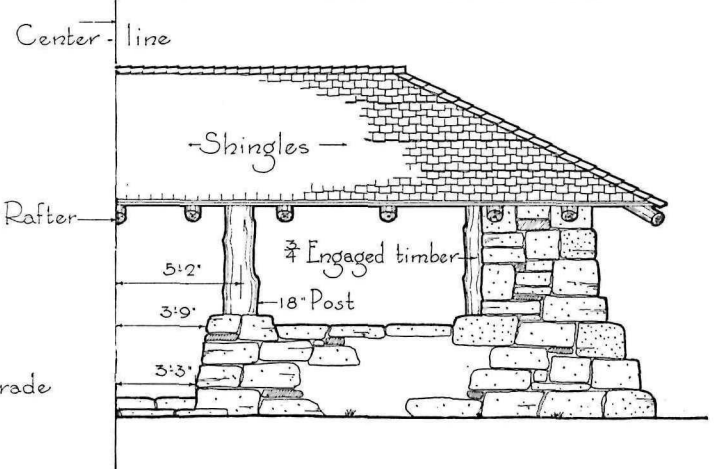


HALF PLAN

HALF ROOF FRAMING



HALF SECTION & SIDE ELEVATION



FRONT ELEVATION

Scale 3/8"=1'-0"



Whitewater State Park, Minnesota



Mount Penn Metropolitan Reservation, Reading, Pennsylvania

SMALL SHELTERS OF STONE AND TIMBER

Here are shown shelters which retain elements of the shelter detailed opposite, varied by regional and personal influences. Two, even without captions, could be quickly tagged as not of the Far West. The Mount Penn example is the earlier illustrated all-wood shelter in this same area, with stone piers introduced. The Fort Worth subject might fittingly be approximated in many environments. Not so the Phoenix South Mountain ramada. Definitely of the desert country are its piers of thin stone slabs, roof of vigas and bearded thatch of old Spanish custom. The scale, mass, and blending to site of the Osage Hills shelter are admirable.



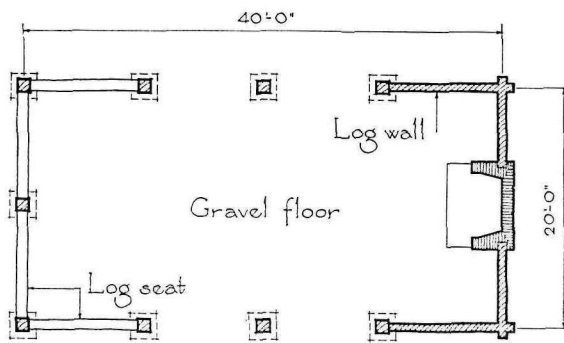
Lake Worth Metropolitan Park, Fort Worth, Texas



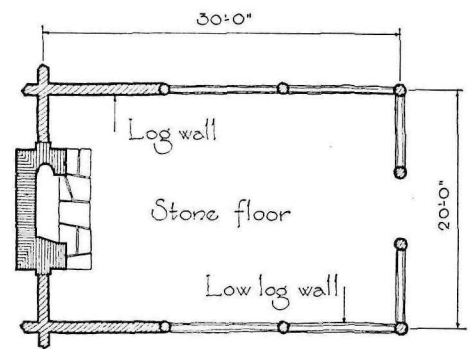
Phoenix South Mountain Metropolitan Park, Phoenix, Arizona



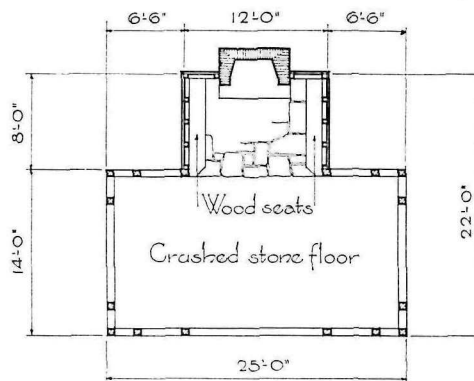
Osage Hills State Park, Oklahoma



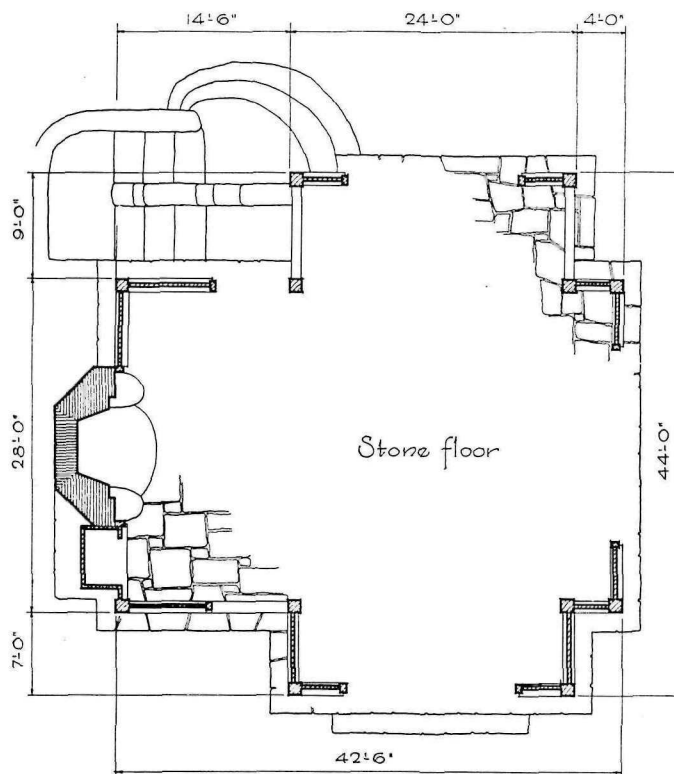
Fort Mountain State Park - Georgia



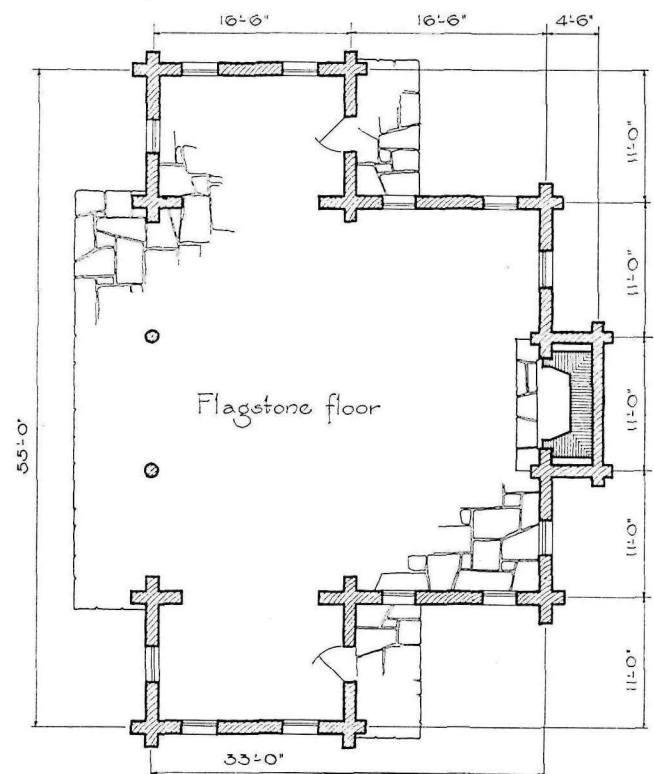
Darling State Forest Park - Vermont



Westmoreland State Park - Virginia

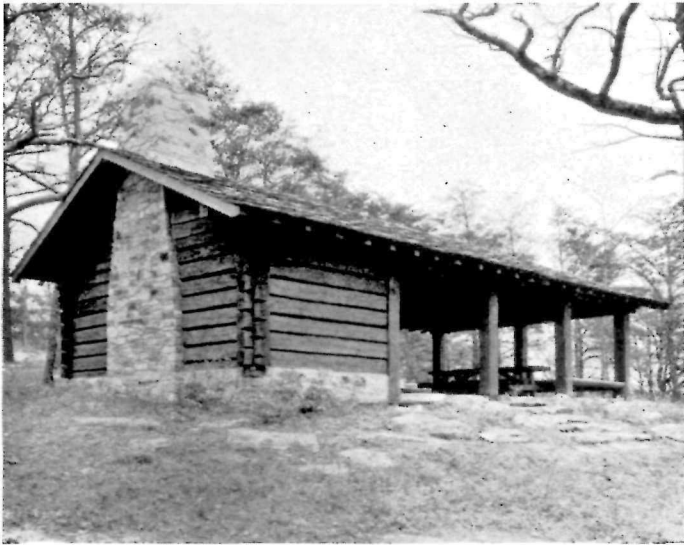


Stony Brook State Park - New York



Fillmore Glen State Park - New York

Scale $\frac{1}{16}'' = 1'-0''$



Fort Mountain State Park, Georgia



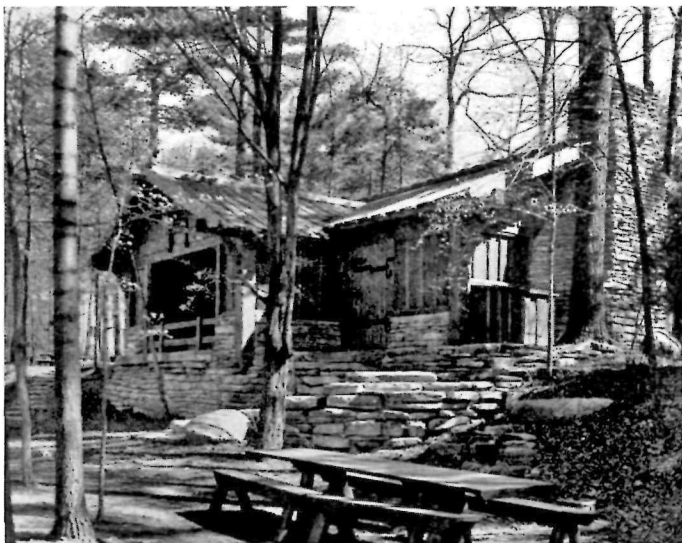
Darling State Forest Park, Vermont

PICNIC SHELTERS WITH SINGLE CHIMNEY

In the development from minor to more complicated picnic shelter, a first step is the addition of a fireplace. A shelter enclosed at one end and open at the other generally follows. Typical are the two examples above. Next step is a T-plan in which the open end expands to both sides with fireplace in an alcove. There is enlarging elaboration in the three shelters of this plan pictured. Wide ranges of material and method are on view, with novel construction details observable in the shelter at lower left.



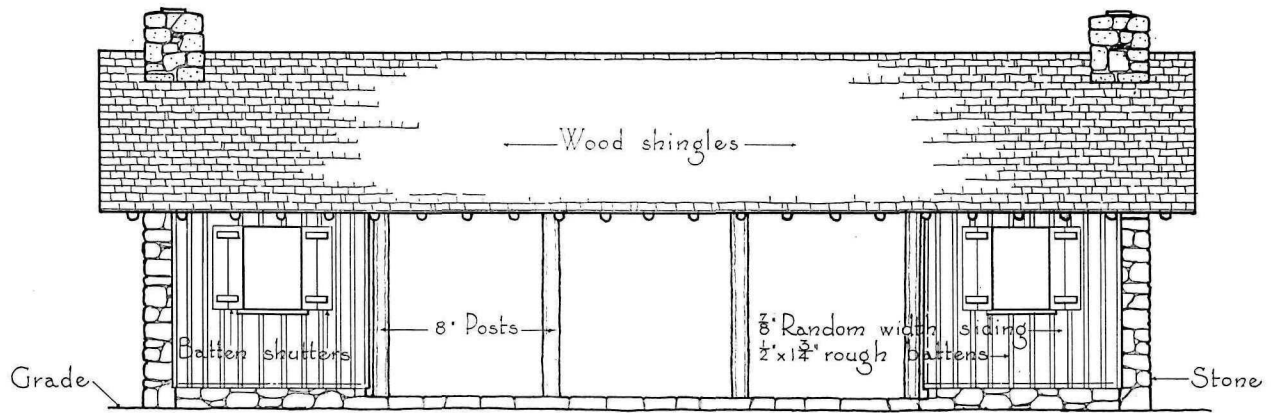
Westmoreland State Park, Virginia



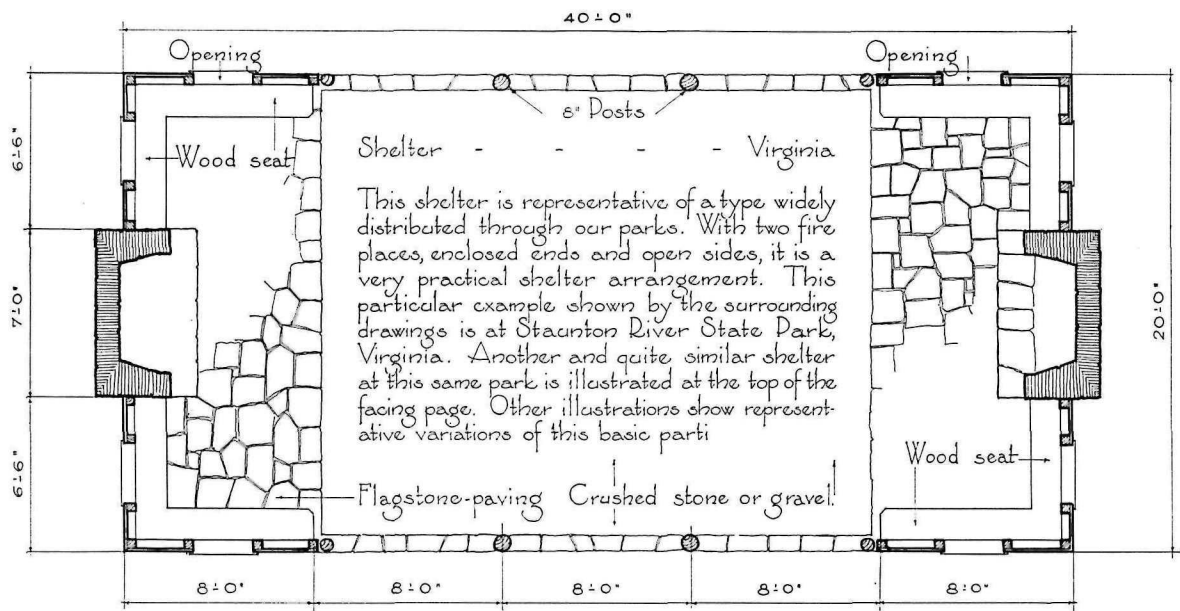
Stony Brook State Park, New York



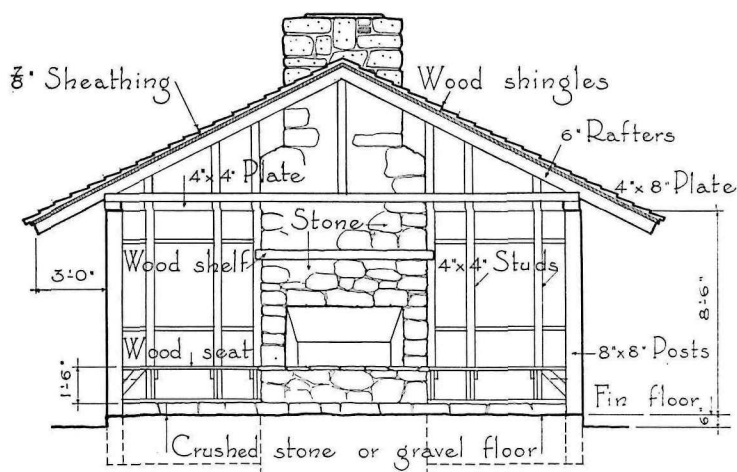
Fillmore Glen State Park, New York



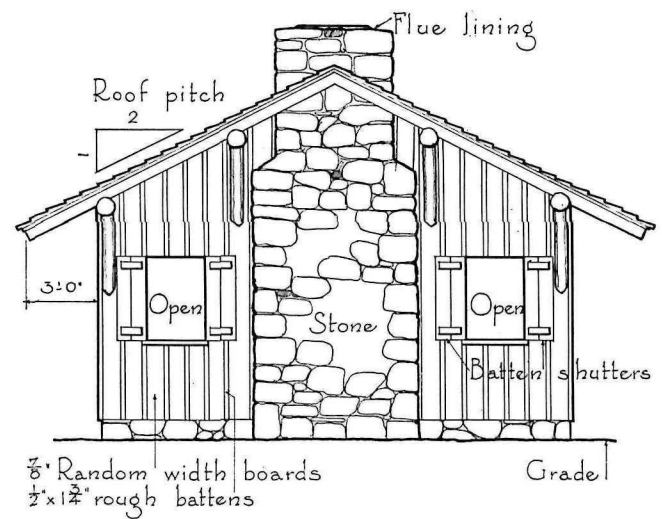
FRONT ELEVATION



FLOOR PLAN



SECTION



SIDE ELEVATION

Scale $\frac{1}{8}" = 1'-0"$



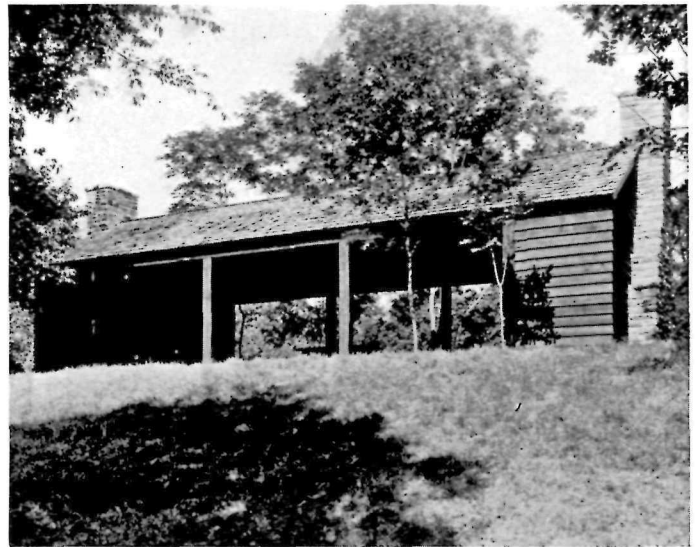
Staunton River State Park, Virginia



Douthat State Park, Virginia

PICNIC SHELTERS WITH TWO CHIMNEYS

The shelter pictured above and the one detailed on the facing page are not one and the same shelter but illustrate variations within a narrow range on one park area. The other subjects exhibit interpretation of this basic and popular two-chimney type in a variety of materials including vertical logs, rough-sawn siding, and masonry in differing techniques. These serve to demonstrate the wide range of exterior treatments it is possible to obtain from an almost identical floor plan.



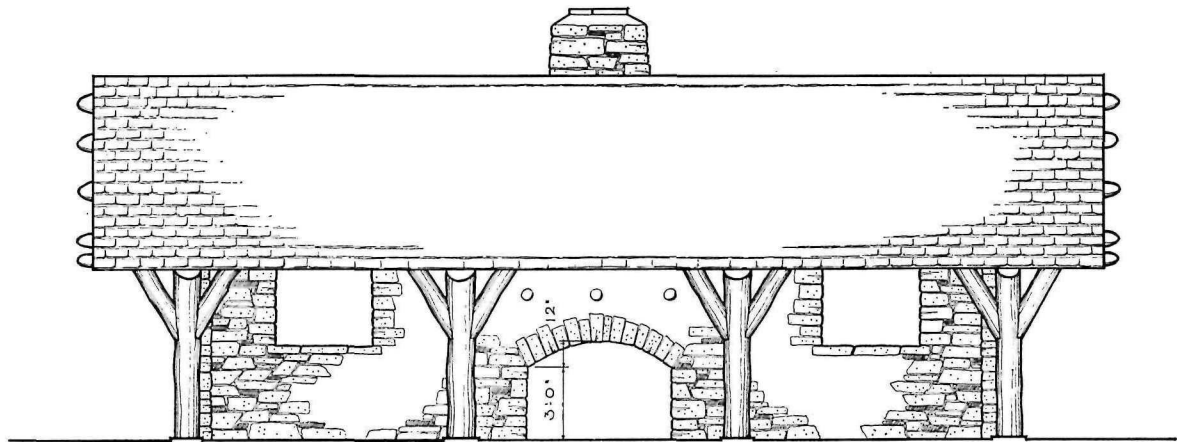
Wheeler Dam Reservation, Tennessee Valley Authority



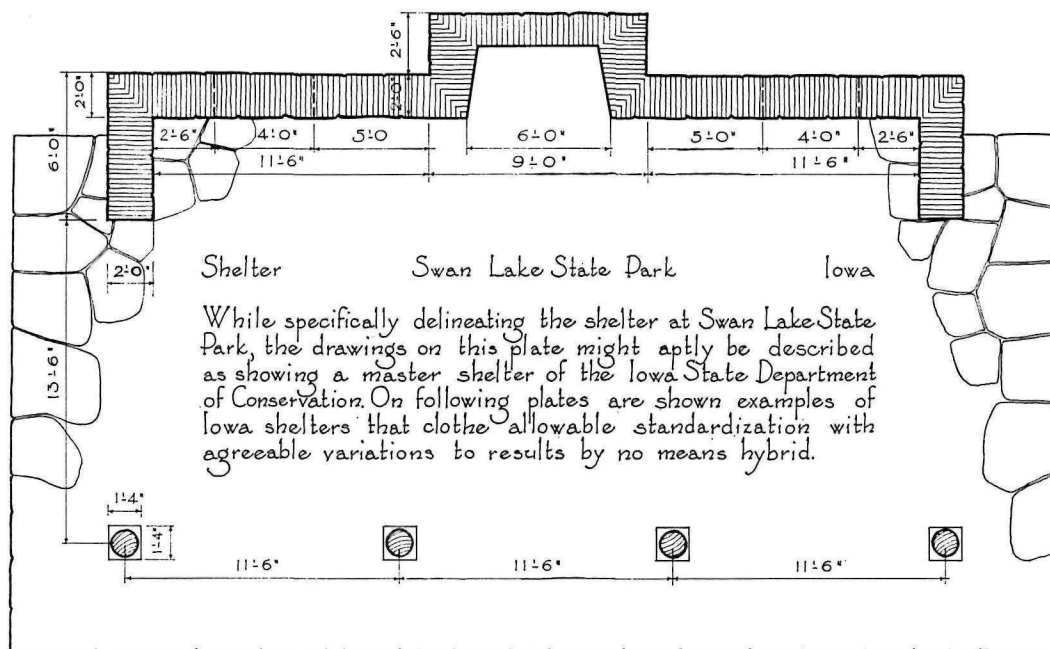
Clarence Fahnestock Memorial State Park, New York



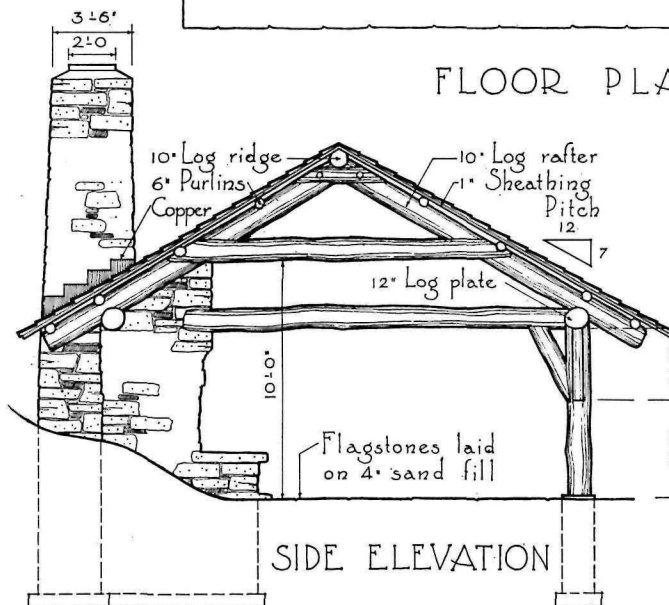
Giant City State Park, Illinois



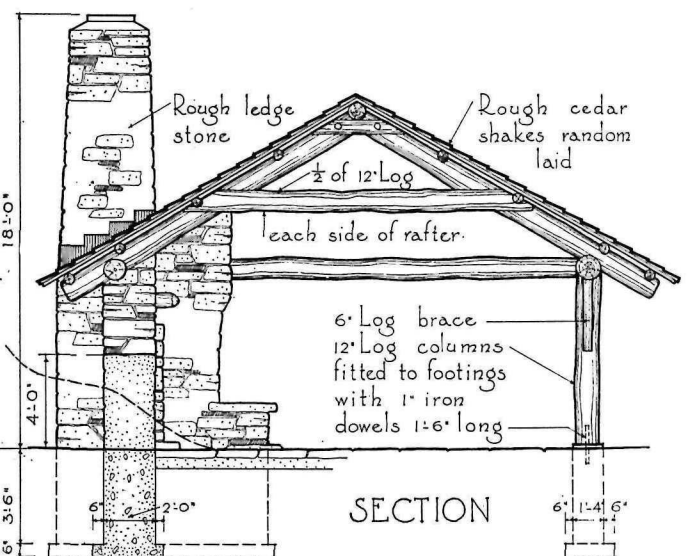
FRONT ELEVATION



FLOOR PLAN



SIDE ELEVATION



SECTION

Scale 1/8" = 1'-0"



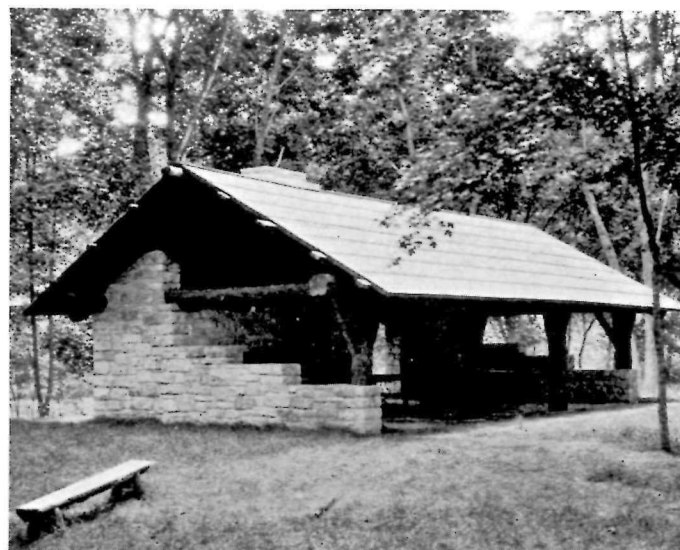
Backbone State Park, Iowa



Forest City State Park, Iowa

IOWA SHELTERS

The surrounding illustrations prove that variations in design within comparatively narrow limits produce a considerable individuality. All bear the stamp of Iowa through kinship with the shelter detailed on the opposing page, yet none evidences slavish duplication. Rather is there indicated a regional structural expression that is agreeable and vigorous. The plan is one appropriate and useful in many settings. The stages from very open shelter to much enclosed one and other points of variation are interesting.



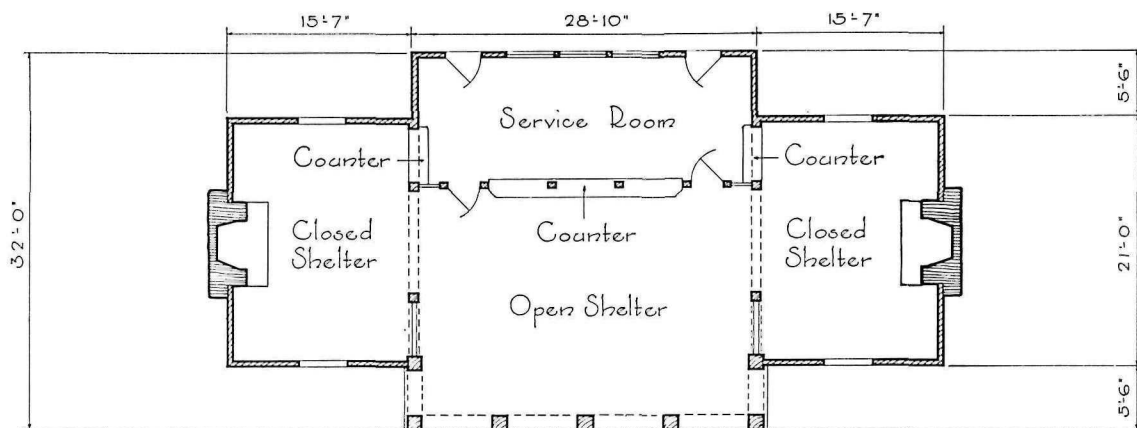
Backbone State Park, Iowa



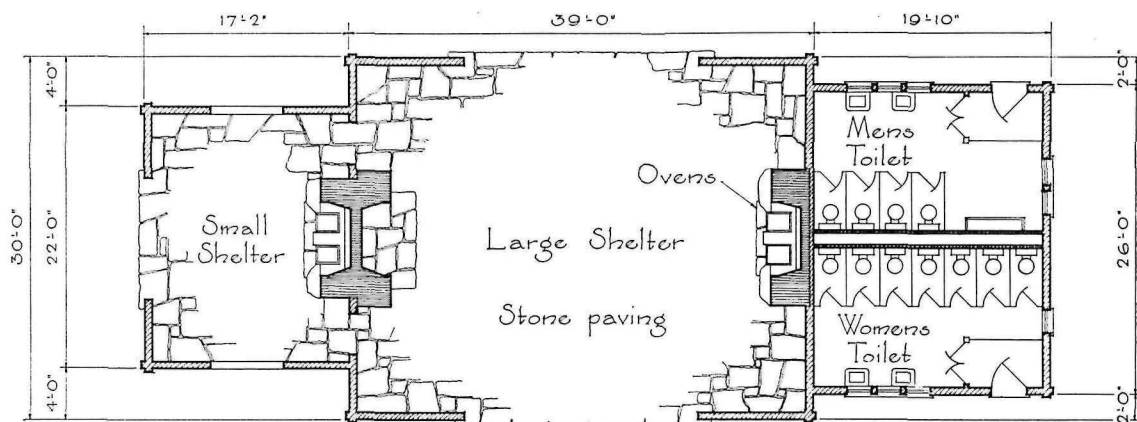
Gitchie Manitou State Park, Iowa



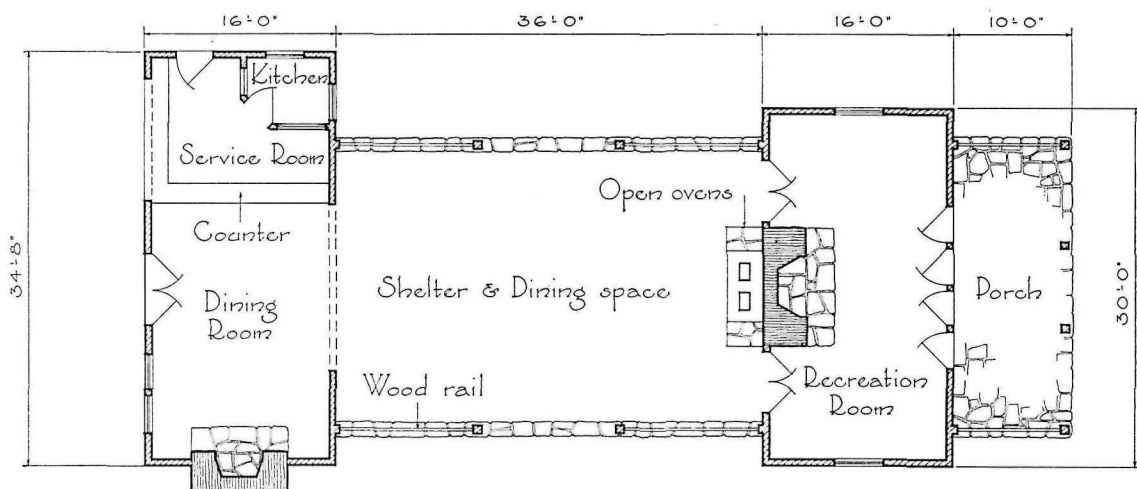
Springbrook State Park, Iowa



Spring Mill State Park - Indiana



Turkey Run State Park - Indiana

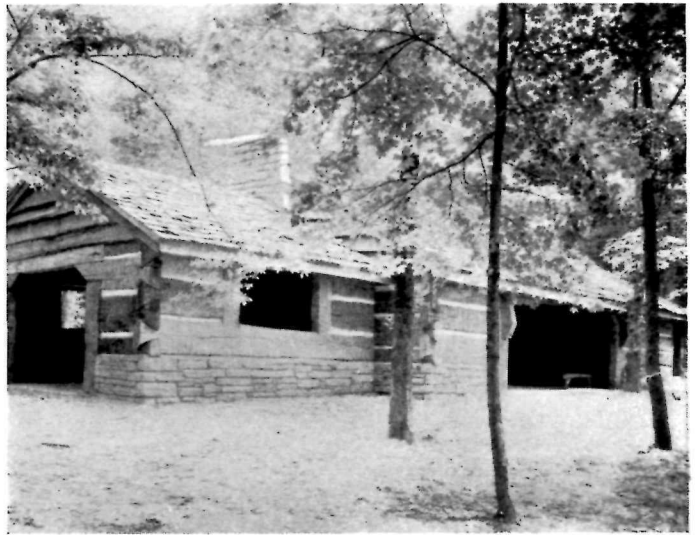


Clifty Falls State Park - Indiana

Scale $\frac{1}{16}" = 1'-0"$



Spring Mill State Park, Indiana



Turkey Run State Park, Indiana

LARGE PICNIC SHELTERS IN INDIANA

In their log construction and many minor characteristics, the large shelters or combination buildings shown in plan on the facing page, and here illustrated, are unmistakably of Indiana. The Spring Mill State Park shelter is constructed within a park that centers around an early grist mill, restored to operating condition in a delightful setting. The new shelter gestures deferentially to the venerable mill. The wood posts are chamfered in the manner of the expert joinery of the mill framing.

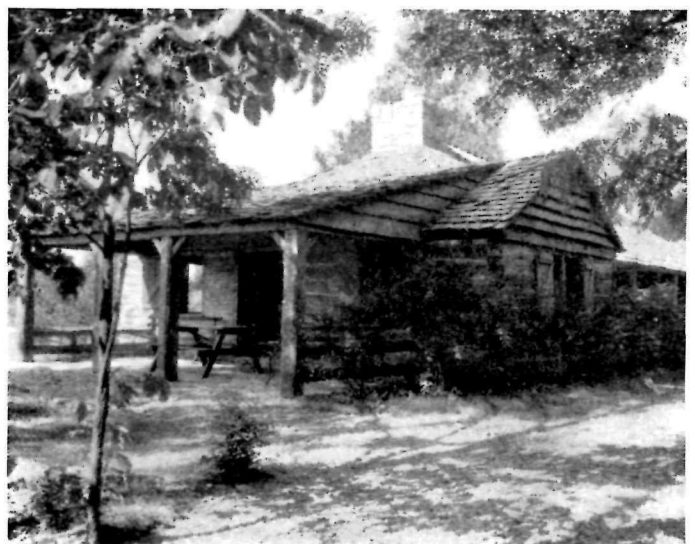
The Turkey Run subject is in a State park whose chief glory is a last stand of virgin hardwood forest. The squared logs, of astonishing size for the region

generally, thus fittingly relate structure to setting and to park "theme."

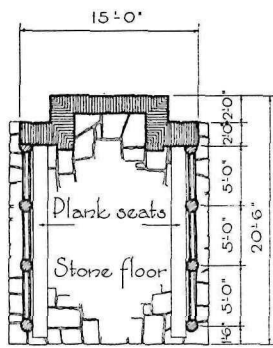
The low, informal, and picturesque Clifty Falls State Park shelter succeeds in retaining the feeling of the typical primitive log cabin of southern Indiana that must have inspired it. The combination of textures, the denticulation of roof comb by the local practice of alternating the lap of the topping-off shingle courses, the squared logs, and robust chimneys are important details. This is exhibit A in disproof of any contention that a simple structure of character cannot be expanded without sacrifice of its savor.



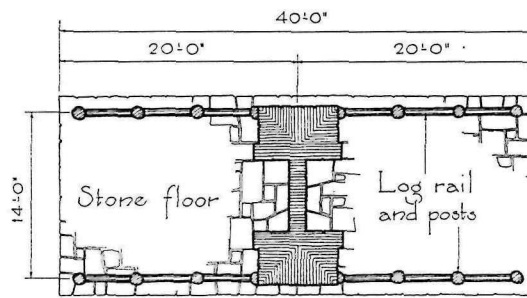
Clifty Falls State Park, Indiana



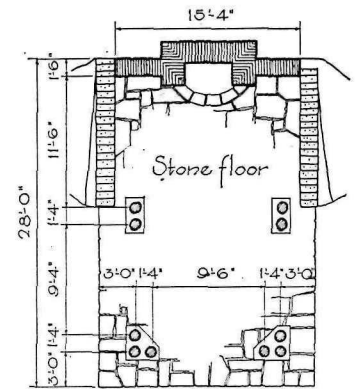
Clifty Falls State Park, Indiana



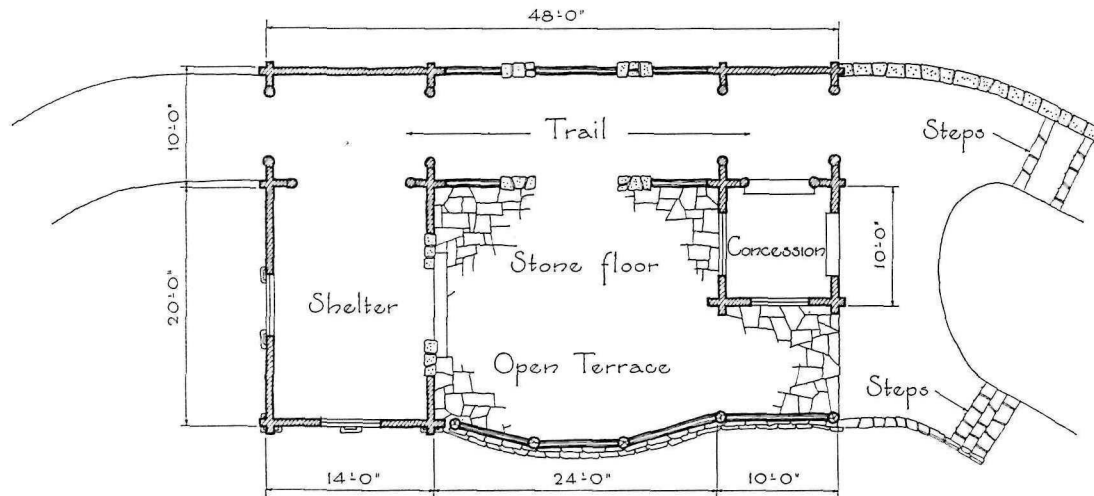
Starved Rock State Park - Illinois



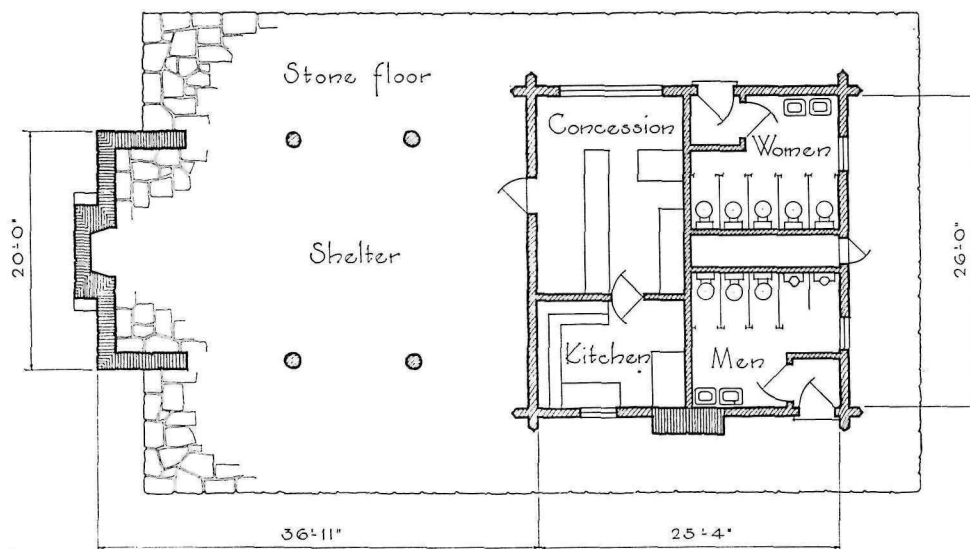
White Pine Forest State Park - Illinois



White Pine Forest State Park - Illinois



Pere Marquette State Park - - Illinois



Buffalo Rock State Park - - Illinois

Scale $\frac{1}{8}" = 1'-0"$



Starved Rock State Park, Illinois



White Pine Forest State Park, Illinois

PICNIC SHELTERS IN ILLINOIS

Here are Illinois picnic shelters in graduated sizes, ranging from one so minor that it would shelter but a single picnic group to an example which includes refreshment concession and comfort stations. In the little shelter at Starved Rock State Park and the Siamese adaptation of it at White Pine Forest there is faint recall of European farm buildings that appears accidental rather than deliberate. The routing of the trail through the Pere Marquette shelter is a unique feature.



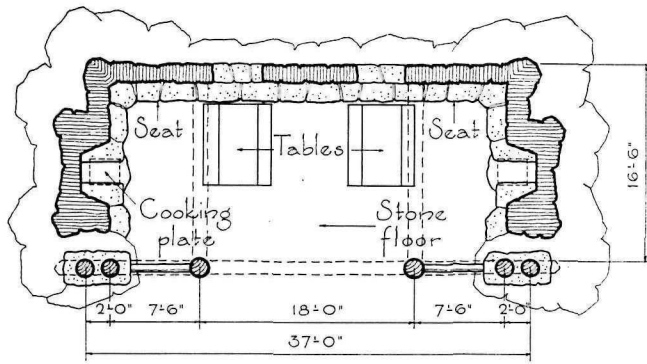
White Pine Forest State Park, Illinois



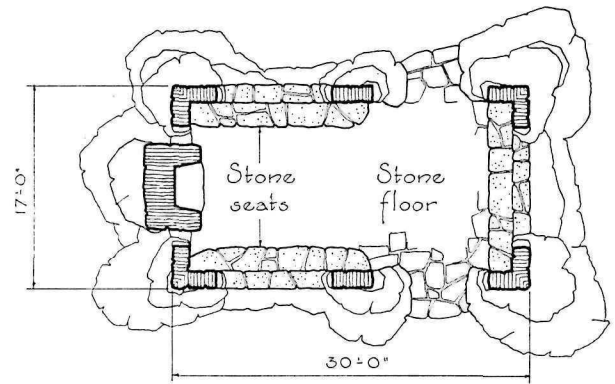
Pere Marquette State Park, Illinois



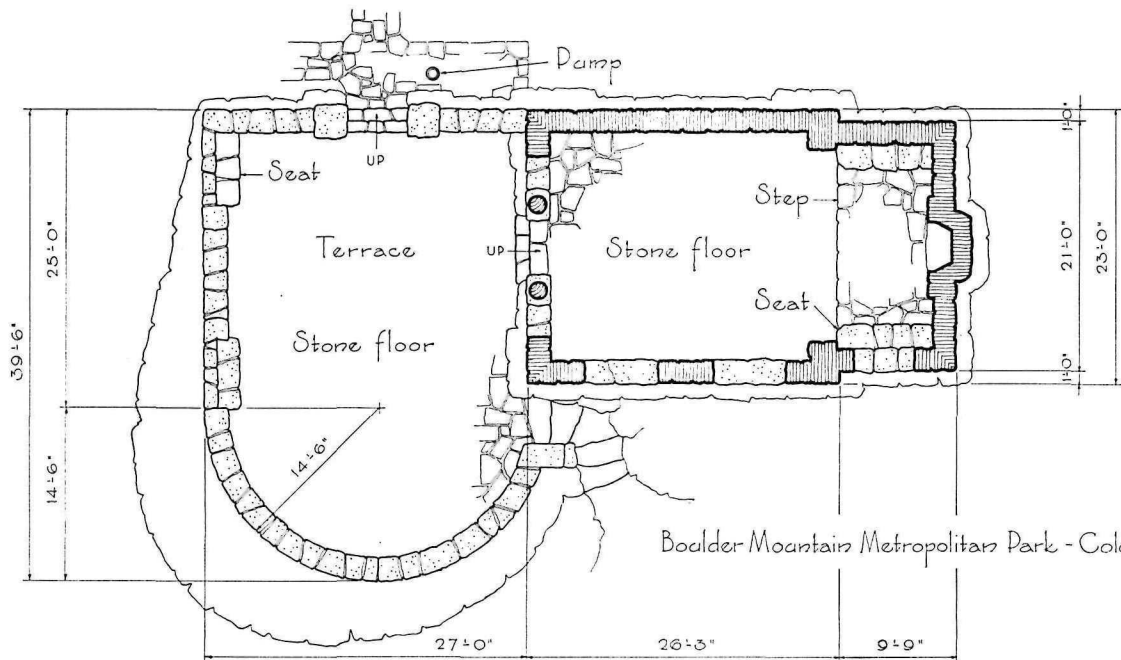
Buffalo Rock State Park, Illinois



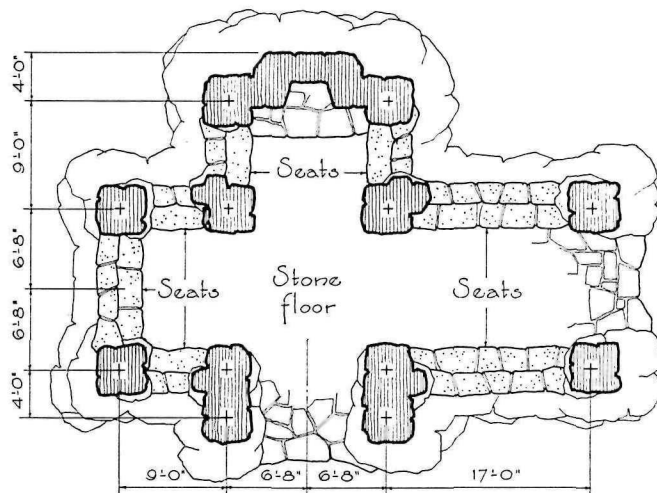
Saratoga Hot Springs State Park - Wyoming



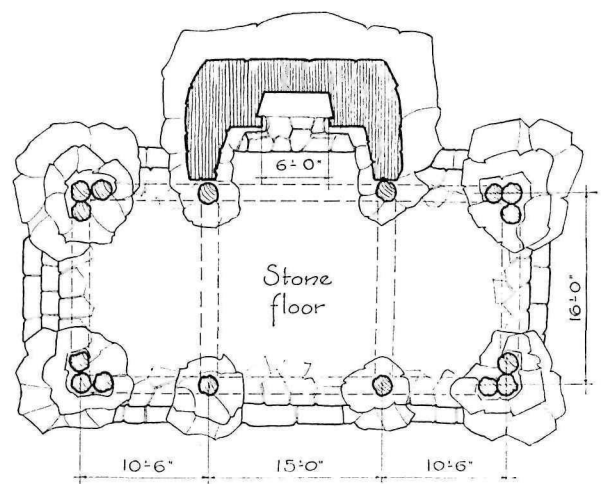
Lake Guernsey State Park - Wyoming



Boulder Mountain Metropolitan Park - Colorado



Lake Okmulgee Metropolitan Park - Oklahoma



Custer State Park - South Dakota

Scale $\frac{1}{16}'' = 1'-0''$



Saratoga Hot Springs State Park, Wyoming



Lake Guernsey State Park, Wyoming

PICNIC SHELTERS IN THE WEST

A scale in structural elements suitable to the rugged country of the plains and mountain states was the challenge encountered and well met in the surrounding shelters. Plans of them are shown on the facing page. In the Lake Guernsey example the transition from formless rock outcrop to a topping-off of chimney with well-formed masonry is skillful indeed. There are excellences of detail in all these shelters to merit careful study and to inspire equally vigorous structures wherever harmony with rugged terrain is the goal.



Boulder Mountain Metropolitan Parks, Colorado



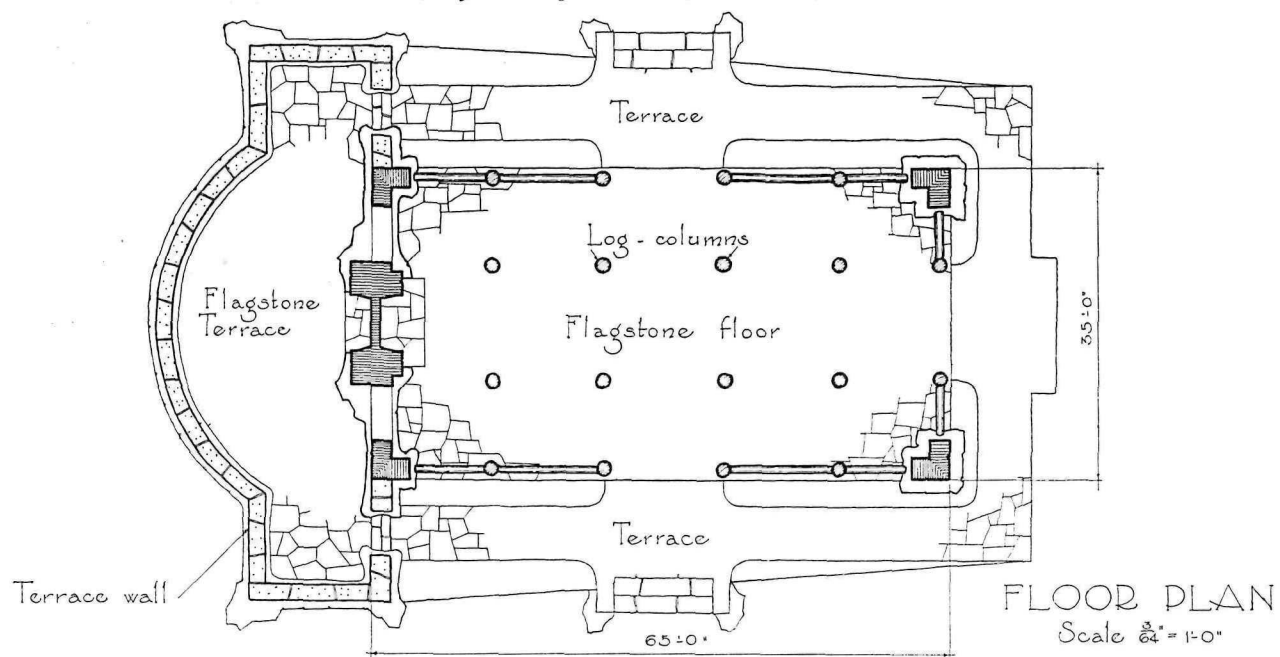
Lake Okmulgee Metropolitan Park, Oklahoma



Custer State Park, South Dakota



Shelter, Boyle Metropolitan Park, Little Rock, Arkansas



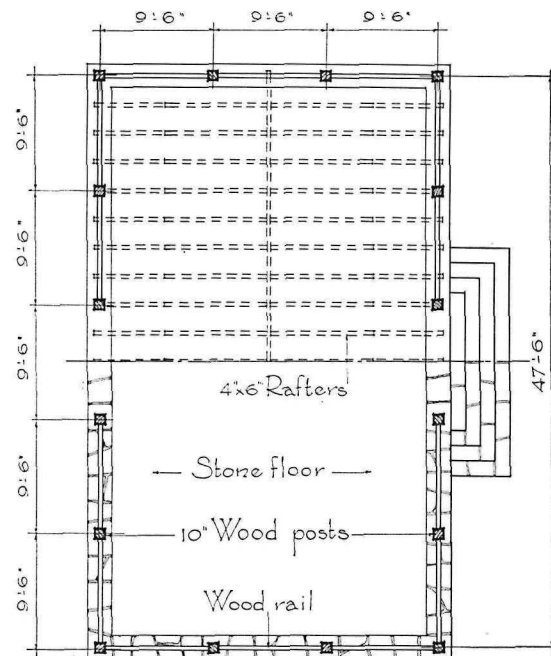
Vigorous in design and sympathetically executed, this shelter ranks near the top by current standards for park architecture. The broad, unbroken roof

surface, rough-textured by thick shakes doubled every fourth course, and the informality of masonry and log work are admirable.



Picnic Shelter, Voorhees State Park, New Jersey

The supporting posts and brackets of this shelter seem perfectly scaled to the mass, and recall something of the sturdy and workmanlike joinery of the early American barn, a fitting source of precedent and inspiration for a building in our natural parks. The horizontality produced by the three-member railing offsets the considerable pitch of a roof that otherwise might cause the structure to appear too high. The simple gable treatment and the broad approach steps are important contributions to the satisfying effect here created.

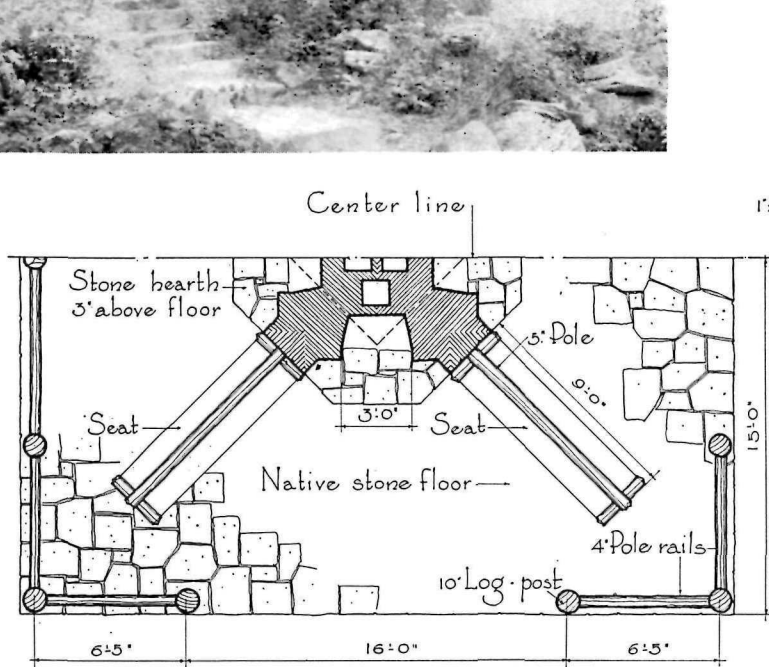


FLOOR PLAN
Scale 1/8" = 1'-0"

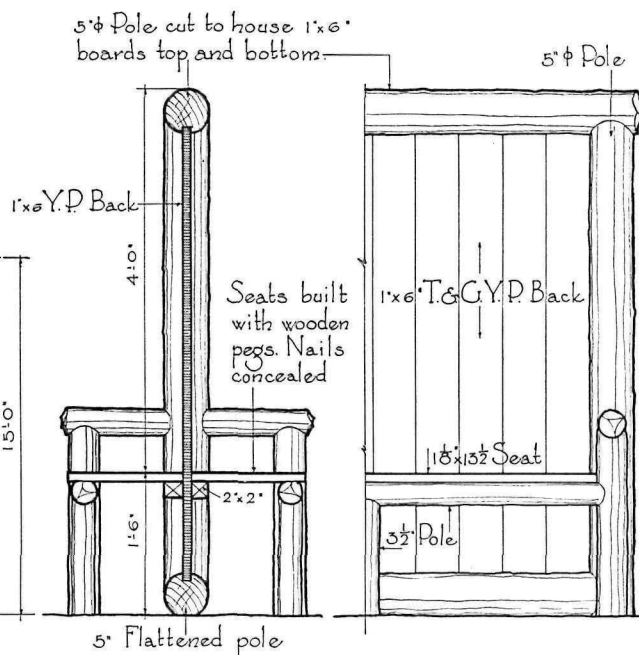


Shelter - Cumberland Falls State Park - Kentucky

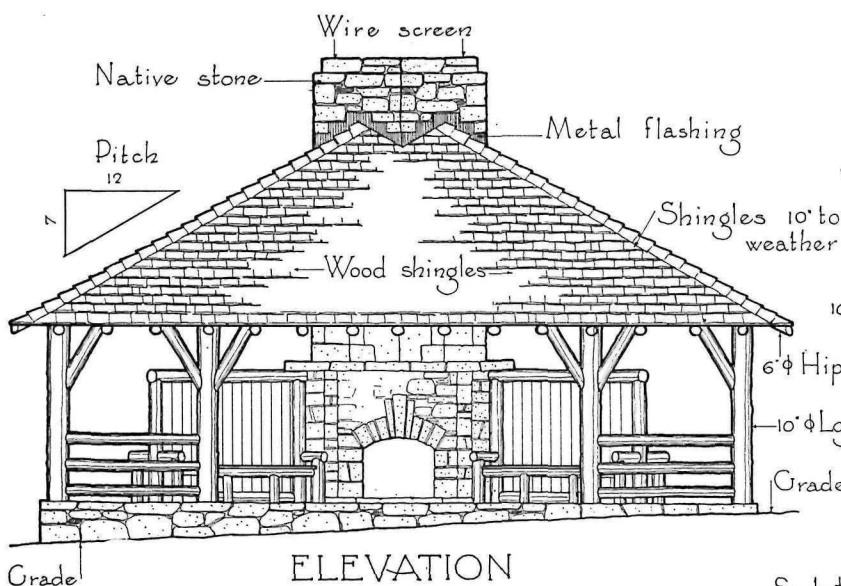
A single roof shelters four picnic groups and barricades each against the incursions of the others by means of partition walls that converge on the four-way fireplace. A splendid safeguard against the entire structure being monopolized by one particularly aggressive group.



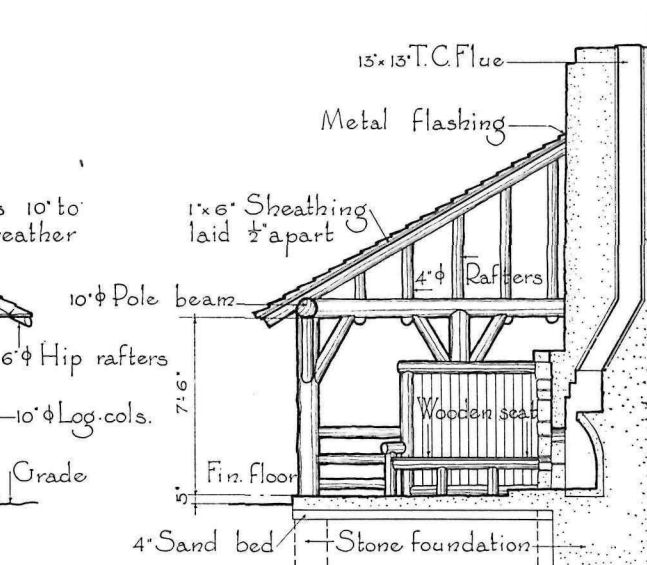
FLOOR PLAN
One half only



DETAIL OF SEAT
Scale 1/2" = 1' 0"



ELEVATION



SECTION

Scale 3/8" = 1' 0"



McCormicks Creek State Park, Indiana

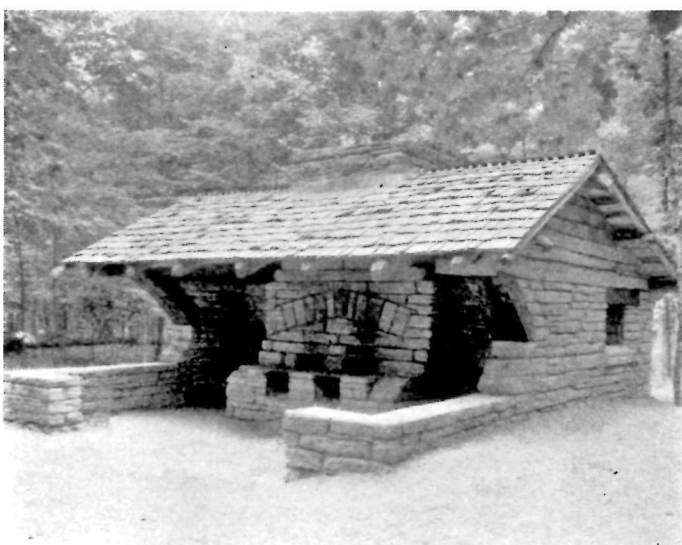


Clifty Falls State Park, Indiana

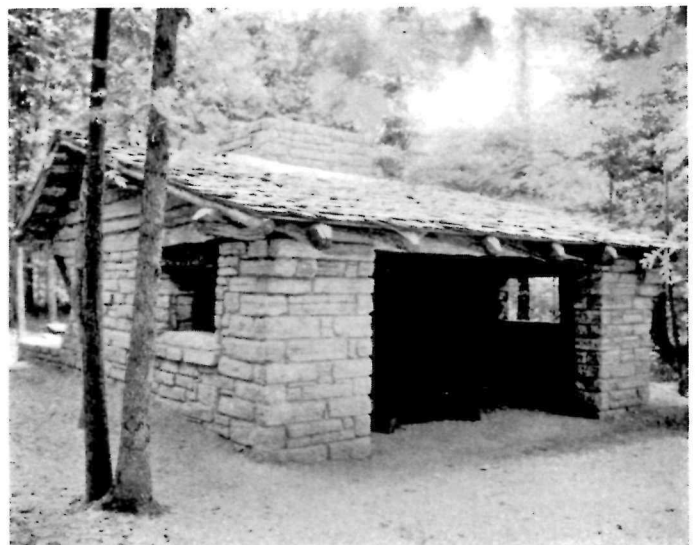
KITCHEN SHELTERS IN INDIANA

Above are illustrated two Indiana versions of the kitchen shelter or community kitchen so generally associated with picnicking in the Northwest. In form these are related to the Kentucky shelter detailed on the facing page. Apparently the Hoosiers do not feel the need for barricades between picnicking groups favored in neighboring Kentucky. They must also regard the enameled sink—standard equipment in the Northwest—as intolerably new-fangled for association with the ancient rites of picnicking.

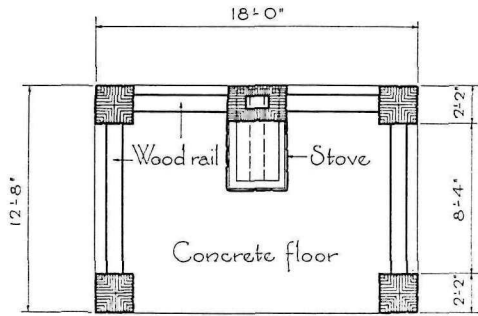
Below are two views of another Indiana kitchen shelter rendering—this one largely of stone, and in a two-way or back-to-back plan arrangement. There was error in that statement about barricades between picnicking Indiana groups being unnecessary. Here is provided not just a separation, but it is of stone, and of a substantial thickness. The building has a pleasing general informality, and there is great interest attaching to the roof rakes, stone and shake textures, and the dovetailed ridge coursing so typical of Indiana.



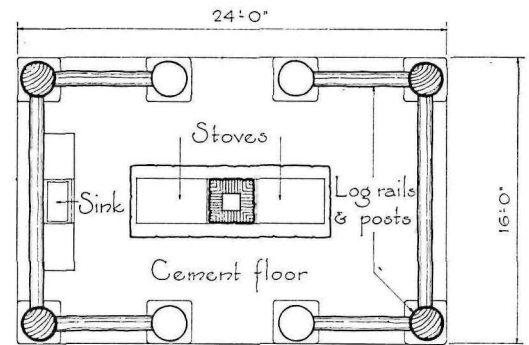
Turkey Run State Park, Indiana



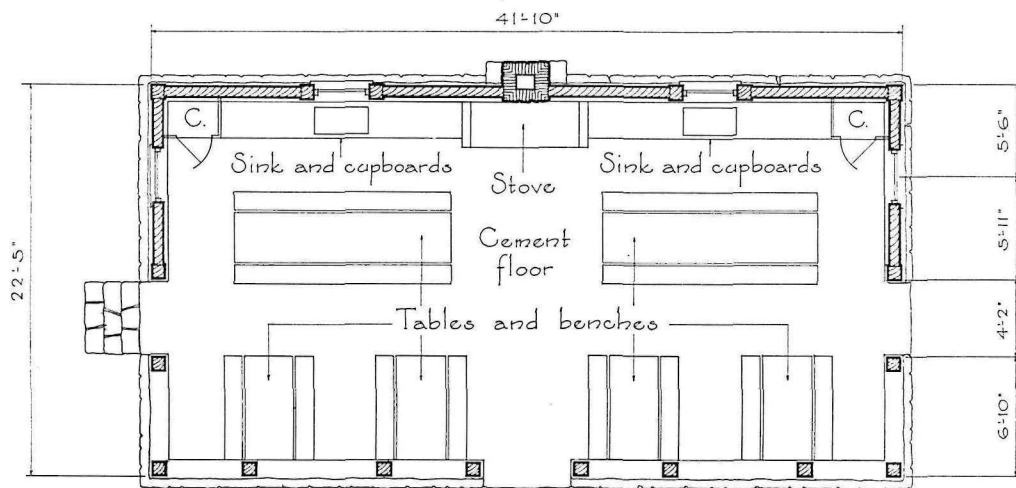
Turkey Run State Park, Indiana



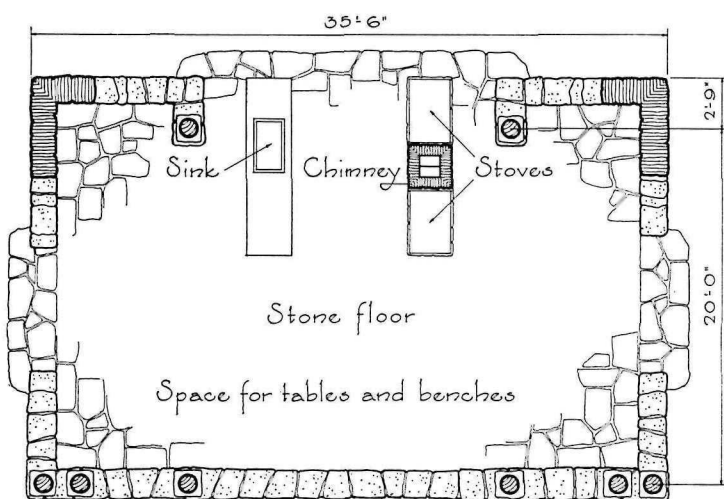
Deception Pass State Park - Washington



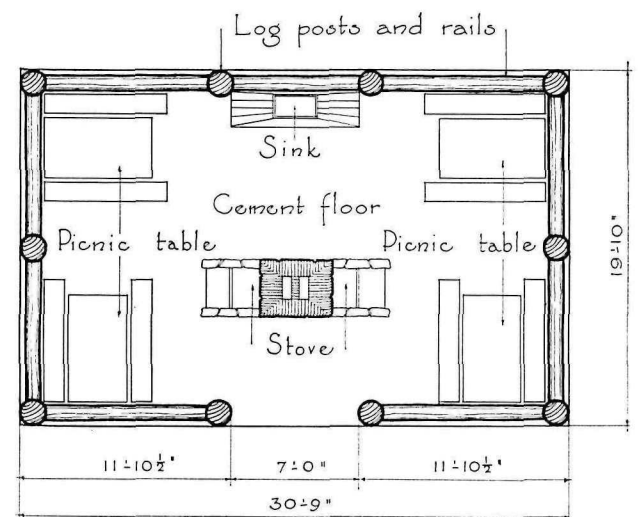
Moran State Park - Washington



Benson Metropolitan Park - Oregon



Riverside State Park - Washington

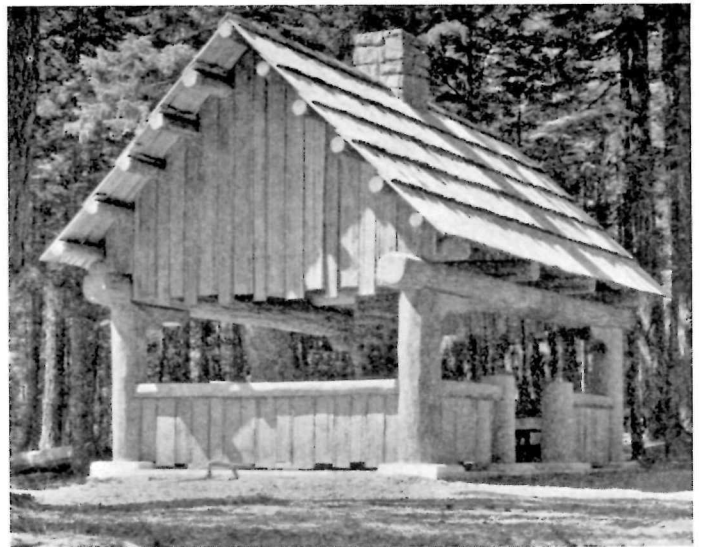


Rainbow Falls State Park - Washington

Scale $\frac{3}{32}$ " = 1'-0"



Deception Pass State Park, Washington



Moran State Park, Washington

COMMUNITY KITCHENS IN THE NORTHWEST

Here are pictured the various shelter kitchens shown in plan on the facing page. All are in the Pacific Northwest, where the mortality rate of picnics relates directly to the heavy rainfall. Facilitating equipment usually consists of one or more picnic ovens, sinks, and a supply of table and bench combinations, the last sometimes in an intimate proximity that only a torrential downpour would render inviting. Realization that the superlative timber resources of this area have not been conducive to the development of a sound masonry technique tempers somewhat a critical sputtering at the unorthodox masonry here pictured.



Benson Metropolitan Park, Oregon



Riverside State Park, Washington

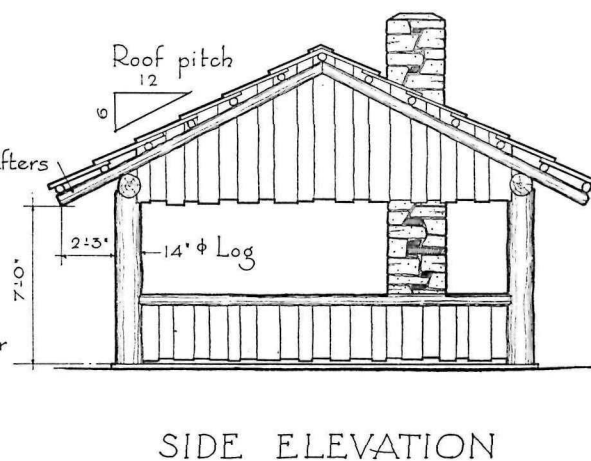
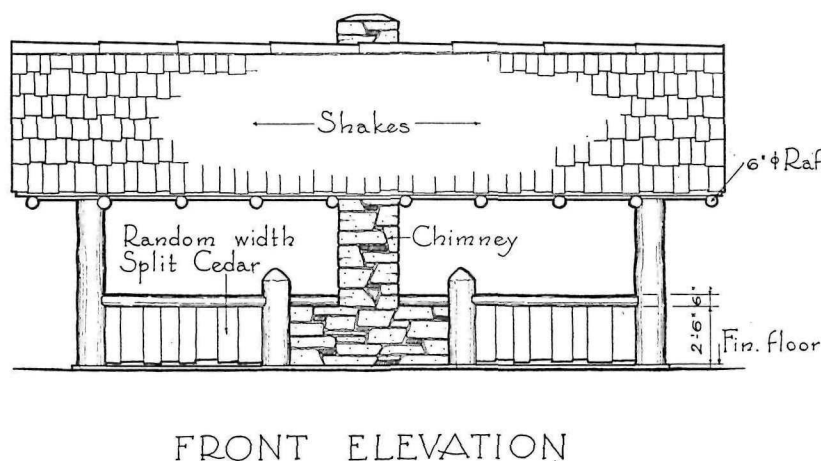
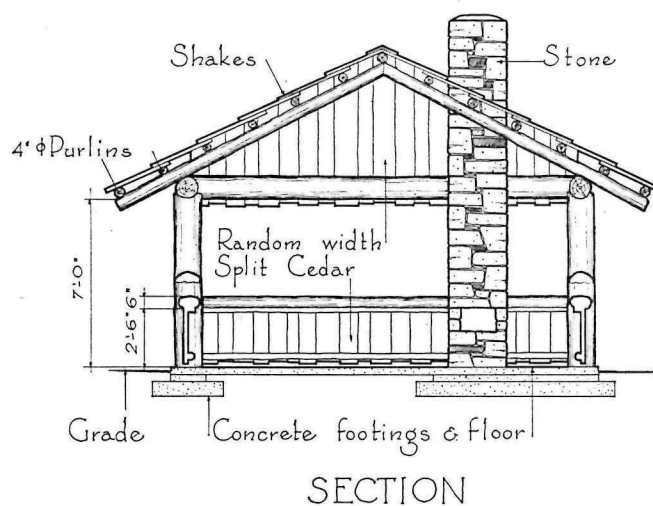
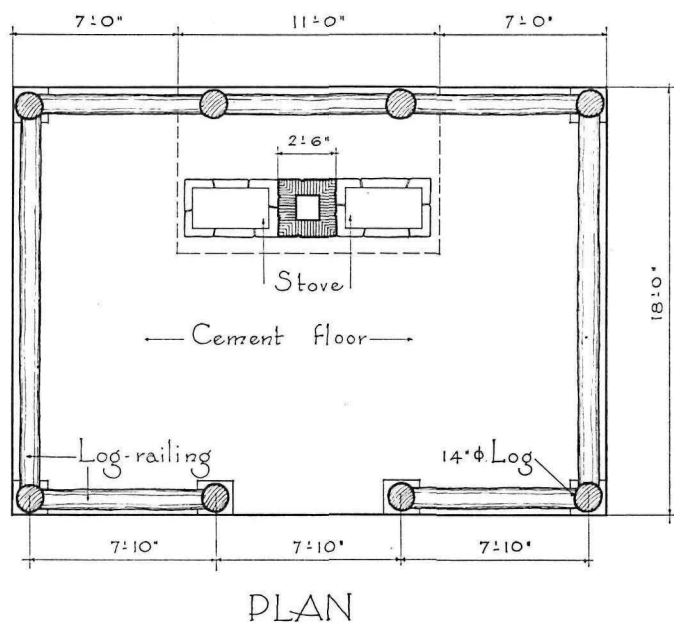


Rainbow Falls State Park, Washington



Shelter Kitchen - Deception Pass State Park - Washington

Typical of a structural facility provided in parks of the Pacific Northwest where heavy rainfall makes sheltered picnic tables and stoves a practical necessity. The hand-riven shakes and their rough-textured collective effect, as here laid, bring to this structure a manifest quality of handcraftedness. There is an agreeable sturdiness about the structure generally



Scale $\frac{1}{8}" = 1'0"$