



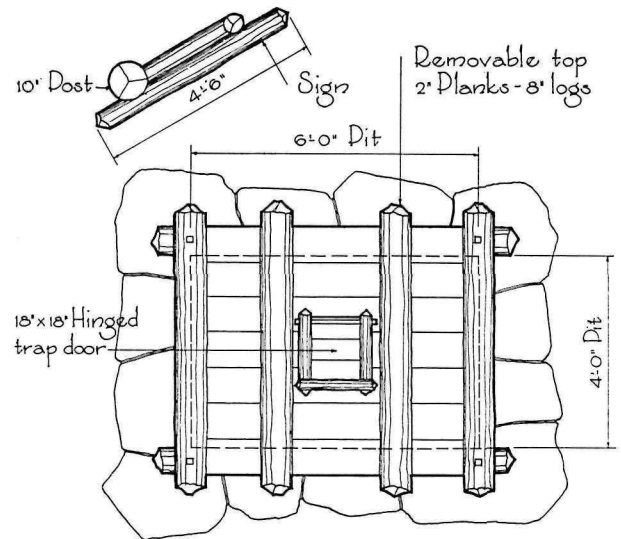
Refuse Pit, Mount Nebo State Park, Arkansas

A disposal pit of fixed location, the exposed parts more parklike, though less flytight, than the very utilitarian steel cover used in the Colorado parks and detailed opposite. The feature of small receiving door framed within the large removal door is common to both. The properly low, informative sign is in good character with the pit cover and the wooded surroundings.

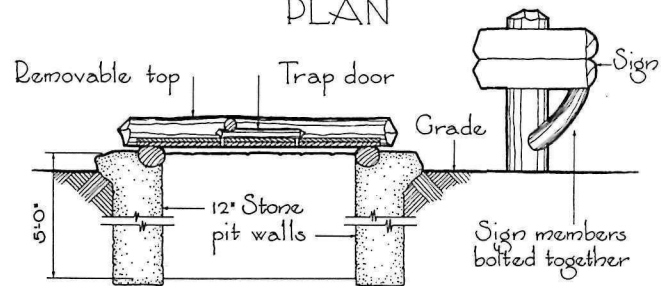


Refuse Pit, Crowley's Ridge State Park, Arkansas

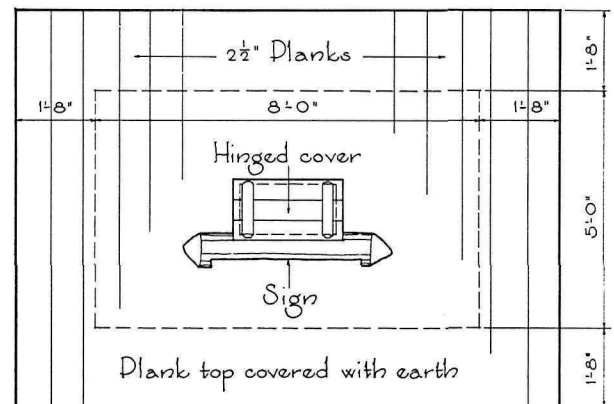
Where an excavation does not require shoring, a refuse pit as here detailed is possible. It is important with this type that the decking be covered with tamped clay and made flytight at all joints. When the pit is filled almost to grade, the decking can be removed to a new pit. The old pit is then covered to grade with tamped earth and sodded.



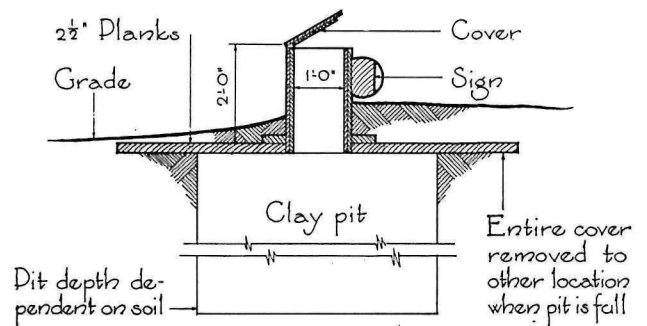
PLAN



SECTION

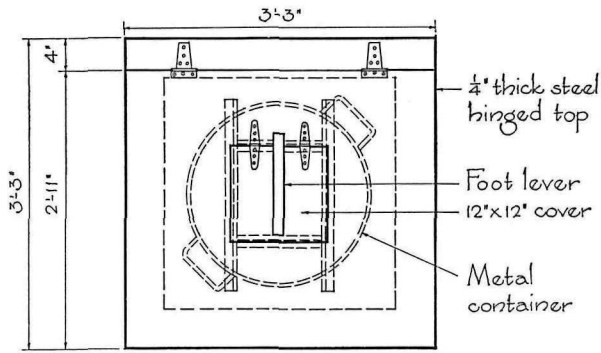


PLAN

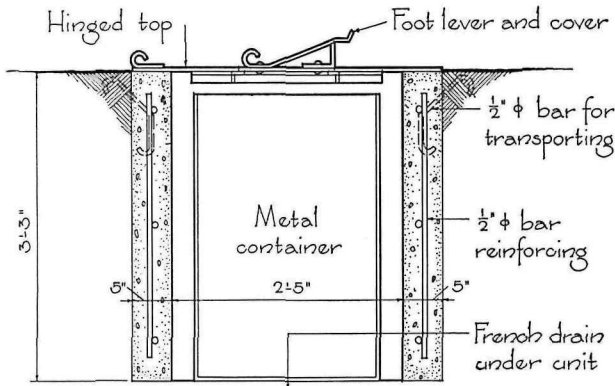


SECTION

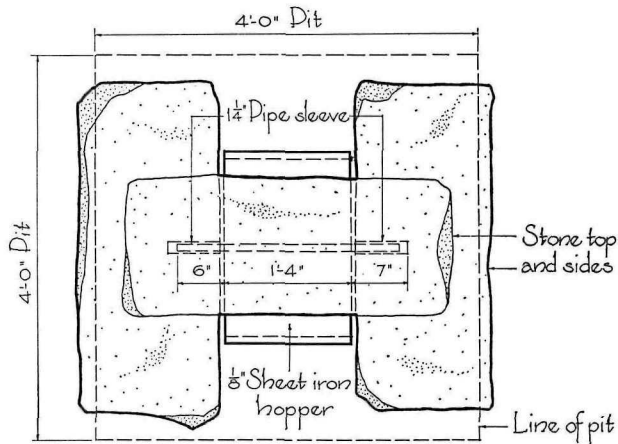
Scale $\frac{1}{4}'' = 1'-0''$



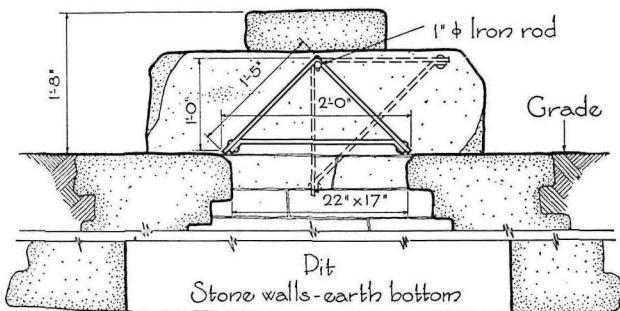
PLAN



SECTION



PLAN



SECTION

Scale 1/2" = 1'-0"



Refuse Pit, Colorado Parks

This contrivance combines a practical grade line steel cover of trap-door-within-trap-door type and a precast concrete underground pit in fixed location. The foot-operated inner door provides for the picnicker's disposal of garbage, and the large outer door permits removal of the receptacle—converted oil drum or some equivalent container—when filled.



Refuse Pit, Devil's Den State Park, Arkansas

The receiving-door device of city trash receptacles borrowed and naturalized in a setting of rocks. Because of the work of providing another rock-walled pit, when one is filled up, and of reerecting the flap door and housing, the type is best suited to parks not heavily used. Unless the opening is kept small, it is a hazard to very small children.



Robbers Cave State Park, Oklahoma



Will Rogers Park, Oklahoma City, Oklahoma



Hualpai Mountain Park, Kingman, Arizona

REFUSE PITS

Above are shown two refuse receptacles of commercial manufacture, in themselves inconspicuous. There is character harmonious with environment in the signs which accompany both and in the rocks massed around the one. Foot operation of the feeding door will be observed in these examples, also in the one to the left.

The doors of both units illustrated below are the less satisfactory hand-operated type, but the designative signs are of interest. Convenient proximity of the example at lower right to the fireplace should be noted.



Boyle Metropolitan Park, Little Rock, Arkansas



Garden of the Gods Park, Colorado Springs, Colorado