



UNITED STATES
DEPARTMENT OF THE INTERIOR
NATIONAL PARK SERVICE
WASHINGTON, D.C. 20240

IN REPLY REFER TO:

JUL 2 1969

Memorandum

To: All National Park Service Employees

From: Director

Subject: National Park Service Uniform Standards

My special informational memorandum number 36--Management, of February 27 outlined steps we have taken to improve the quality of our management. It also solicited recommendations from a committee appointed at that time for a uniform which could be used by all employees without distinction as to his employment status or capacity.

A progress report was furnished on May 15 wherein I approved one color for all vehicles and reinstated the Arrowhead as the official emblem of the National Park Service along with the retention of the Arrowhead shoulder patch.

Attached are the new National Park Service Uniform Standards as recommended by the special management committee chaired by Midwest Regional Director Fagergren and approved by me.

You will note that some basic changes have been made as a result of the recommendations from the committee.

1. Purpose of these recommendations is to unify and bring about uniformity that shall apply to all National Park Service employees except U.S. Park Police of National Capital Parks.
2. There will be only one dress uniform, one field uniform, one work uniform; the type, quality, kind and items of uniform required shall be based upon the duties performed and the climate conditions encountered.
3. Minimized options and changing of uniform to updating as new and better material become available or to conservatively modernize style when outmoded.
4. Basic color shall be white, cordovan, green, gray and gold.

Fale

5. All badges will be gold and will consist of the present shield and the Department of the Interior seal. It will be worn only by personnel involved directly in law enforcement, trained in law enforcement or as might be designated. The name tag will also be gold.

6. The womens' uniform has been materially changed.

These standards will become fully effective on January 1, 1971. The standing uniform committee will start immediately on the task of preparing specifications of the various items of uniforms as listed in the standards.

A large, stylized handwritten signature in black ink, appearing to read "George B. Harbo". The signature is written in a cursive style with a large, sweeping initial "G" and a long, horizontal stroke at the end.

Enclosure



IN REPLY REFER TO:

UNITED STATES
DEPARTMENT OF THE INTERIOR
NATIONAL PARK SERVICE
WASHINGTON, D.C. 20240

June 26, 1969

Memorandum

To: Director

From: Chairman, Special Management Committee

Subject: Report and Recommendations on National Park Service
Uniform Standards

Mr. James M. Kittleman, Management Consultant, in his report to you of July 28, 1967, stated:

"Field organization units of maintenance, interpretation, natural science, research and personnel do not have the stature and prestige of the traditional ranger but are equally as important to the success of the total operation."

Knowing of your great concern and the substantial steps you have already taken to bring about a oneness, a unity of purpose and an improved esprit de corps, we respectfully submit for your approval the enclosed National Park Service Uniform Standards as another step towards the goal.

Paul C. Fagerman

Enclosure

NATIONAL PARK SERVICE UNIFORM STANDARDS

Recommended by:

Hazel Oliff 6/26/69
Mrs. Hazel Oliff Date

Robert Gibbs 6/26/69
Mr. Robert Gibbs Date

Robert Moore 6/26/69
Mr. Robert Moore Date

Approved:

[Signature]
Director, National Park Service

Date: 7/2/69

Fred C. Fagergren 6/26/69
Mr. Fred C. Fagergren, Date
Chairman, Uniform Committee

National Park Service Uniform Standards

History

The first uniform worn by National Park Service employees was prescribed for summer use in 1911 by Major W. R. Logan, Superintendent of Glacier National Park. Approved by the Secretary of the Interior, it consisted of a jacket, army wool shirt, riding trousers, leggings and a felt "campaign" hat.

In 1914 Mark Daniels, who was General Superintendent for National Parks, designed and required all National Park people to wear what was probably the first regular uniform. They continued to wear these clothes until 1919 when Superintendent W. B. Lewis of Yosemite as chairman of a committee appointed by Director Mather prescribed the uniform which was worn until 1946. It consisted of the stiff brim "campaign" hat, blouse, riding breeches and riding boots with a variety of kinds and colors of shirts. This was changed to slacks and shoes in 1947 and has been essentially the same since. Prior to 1935, everyone including Washington Office officials wore the uniform.

A few summer women guides in National Capital Parks experimentally started wearing a white blouse with a green skirt sometime in early 1940. Later the present womens' uniform was prescribed and approved. Patterned after the airline stewardesses of the date, it has continued virtually unchanged.

Why a Uniform

A distinctive uniform worn with pride, dignity, and demeanor promotes the ideals of the organization it represents.

The National Park Uniform immediately identifies the wearer as a representative of a Service whose employees have dedicated themselves to preserving the superlative natural, cultural and recreational areas of the United States and presenting them in a manner which brings enjoyment through understanding.

The performance of the people who have worn this uniform for more than a half a century has earned the service an enviable reputation nationally and internationally.

The roles of the Service are now projected into many large cities and the public image there should reflect the many fine traditions which

have been established and are associated with the present uniform. Thus, the image should be the same whether it be in Alaska, Wyoming or New York.

The reputation and the tradition symbolized by the uniform has created a cohesive organization with a high esprit de corps and the wearer will find a public recognition which will facilitate doing his job in an effective efficient manner.

Who Shall Wear a Uniform

Every employee designated to do so by a Superintendent, a Regional Director or Director.

When is a Uniform Worn

Whenever on duty within a park area or National Park Service Office and the employee is one designated to wear a uniform. All other occasions in or out of a park area where taste and judgment indicate it would be appropriate to do so, particularly when such appearance would further public knowledge, understanding and support of the National Park Service, its policies and programs.

How to Wear the Uniform (dress and appearance)

Each employee designated to wear the uniform must be well groomed and insure that his personal appearance at all times reflects credit upon himself and the National Park Service. Each will meet the following minimum requirements:

(a) Appearance of the uniform

They must be clean, neat, correct in design and specification, and in good condition. They should be kept buttoned, shoes, belts and other leather accessories shined and in good repair. Metallic insignias, badges and other devices maintained with proper luster.

(b) Personal Appearance - Men

Face kept clean shaven, but a short neatly trimmed mustache may be worn. Hair neatly trimmed. It may be clipped at edges of side and back but should present an evenly graduated appearance. Hair on back of neck is not to extend beyond nor curl over the collar. Sideburns, if worn, shall not extend lower than the middle of the ear and are not to be overly conspicuous.

(c) Personal Appearance - Women

(1) Hair shall be neatly arranged and shaped to present a modest feminine appearance.

(2) Cosmetics may be used but in good taste.

What is the Uniform

A. General Guidelines

1. Purpose of these recommendations is to unify and bring about uniformity. They shall apply to all National Park Service employees except Park Police of National Capital Parks.

2. Minimize changing uniforms and then only to update as new and better materials become available or to conservatively modernize styles when outmoded.

Avoid abrupt and wholesale change, stabilize and traditionalize the uniform.

3. Bring about one uniform with a minimum of options.

4. When changes are made give as long a period of phase out and phase in as possible. (Any proposed changes in existing uniform recommended in these standards to be carried out between now and January 1, 1971).

5. Uniformity which will not indicate any distinction as to grade or rank such as present in military uniform. This will require sufficient training of the lowest graded uniformed employee to the extent that he can at least direct visitors as to where he can obtain proper information and to handle an emergency situation to the extent

he at least knows how and where to summon assistance. Additionally, implanting the idea to each employee that every visitor is a V.I.P. and in the eyes of the visitor each employee is truly a representative of the National Park Service.

6. The type, quality, kind and items of a uniform an employee shall possess and wear shall be based upon:

- a. the duties he will perform
- b. the climatic conditions he will encounter in the work situation he will be assigned
- c. superintendents, regional directors and the director, in addition to stating who shall wear the uniform, shall specify the items which are to be worn, under what conditions, location and circumstances

7. Basic colors:

- a. white
- b. cordovan (for all leather articles)
- c. green, loden green (a gold or yellowish green vs. the blueish or "spruce green")
- d. gray (nickel)
- e. gold for all metal objects

8. Material weights not to exceed 16 oz. for cool climates and 10 oz. for warm climates; can be wool, dacron, polyester, rayon, nylon, cotton and combinations but as specified.

Whenever practical provide perma-press, drip-dry, easily cared for type clothing.

9. Uniform should be available at as many companies, stores and other sources as possible, provided they will furnish materials which are consistent with specification, quality, design and colors prescribed.

10. A standing Uniform Committee, appointed by the Director, shall periodically evaluate suggestions and recommendations concerning the uniform.

B. Insignias, badges, etc.

1. Badge

Shall be a gold shield with National Park Ranger across the top and the Department of the Interior seal within the circle.

(a) Since it indicates authority and responsibility, it shall be worn only by those directly involved in law enforcement; one who has had some law enforcement training; or by those designated by a Superintendent, Regional Director or Director who because of certain situations or circumstances should also wear such a badge (example a Superintendent in a small area and where no other law enforcement personnel are available or employed).

(b) Badge shall be worn at the middle of the left pocket of the dress blouse or jacket but above the left pocket on shirts.

2. National Park Service gold collar ornaments worn by men on dress blouse or jacket only.

3. Arrowhead shoulder patch

(a) The approved arrowhead shall be worn on the left shoulder of all clothing worn as an outer garment.

(b) Size as prescribed for either sex

4. Name tags

(a) To be worn by all employees

(b) Gold metal plate with cordovan colored block letters; corners rounded

(c) Removal type with two pins and keeper; to be worn above right pocket

- (d) Sew-on or iron-on type of white block-lettered names on matching green cloth base for work uniform
- (e) Length and width long enough only to provide for first or nickname, and last name.

5. Tie tacks

Gold and green parkscape symbol. (Parkscape symbol can also be used on literature, film, and exhibits to publicize programs of the National Park Service and can also be worn with civilian clothes).

6. I. D. Cards

A wallet-size I.D. card shall be provided giving name, title and identifies him as an employee of the National Park Service of the Department of the Interior. (Could also show special skills such as scuba diver, mountain climber, fire boss, etc.)

The Uniform

A. Regular - Mens

1. Dress

a. To be worn by all those designated to do so by Superintendent, Regional Director or Director

b. Shall consist of:

Dress coat (blouse)

Hat, felt or straw

belt

shirt

shoes

Raincoat, gray plastic

or green treated

Parka (insulated or non-insulated)

Trousers

hat band

neck tie

socks

short top coat (carcoat)

or knee-length top coat (either to be of London Fog or alligator type with zipper liner)

caps, ski or mouton fur trimmed

cap for winter, without insignia

- c. (1) Trousers and blouse - not to exceed 16 oz. for cold or cool climates and 10 oz. for warm or humid climates and in accordance with other specifications as previously described.

(2) White shirts can be worn for highly formal functions such as dedications, evening ceremonies, banquets, and other occasions where a blouse or jacket is customarily worn.

Shirts will be of nickel gray color with standing collar, epaulets, and pleated patch pockets. Shirt worn under coat can be a plain nickel gray.

2. Field

- a. To be worn where work situation is considered generally informal or as prescribed by the Superintendent, Regional Director or Director.

- b. Shall consist of same outfit as the dress uniform except:

(1) In place of blouse a jacket can be worn. It shall be the modified "Ike" type (not to exceed 16 oz. waist length standup dress collar, zippered front, plain sleeves with elastic gusset inserts on waist band. (See specifications)

(2) If long-sleeve shirt is worn, neck tie required. Short-sleeve shirt to have standup dress collar and can be worn with or without necktie.

3. Work

- a. To be worn by anyone who has daily contact with visitors but is engaged in physical work or an activity, or a situation which indicates the use of readily cleanable and less valuable clothing.

- b. Shall consist of:

nickel gray shirt - short or long-sleeve - neck tie optional
cuffless trousers

jacket

cap (baseball or ski type) or straw hat - similar in color to dress uniform straw hat

All-weather garment for winter or storm wear, liner optional and can be of perma-press type of cotton, denim or polyester - rayon or other mixtures.

B. Regular - Women (all to be of standard basic color)

1. Dress

To be worn by all those designated to do so by Superintendent, Regional Director or Director

Shall consist of:

- Dress - synthetic combination wool-jersey knit "yoke shift", standup collar with the arrowhead shoulder patch. (See illustration)
- Jacket - blazer type of synthetic combination wool-jersey knit, without collar, double breasted with gold colored NPS buttons, arrowhead shoulder patch. (See illustration)
- Vest - V-neck type synthetic combination wool jersey knit with gold colored NPS buttons down the front and on pocket worn with name plate. (See illustration)
- Blouse - white Bermuda or Peter Pan type collar, roll up sleeves for wear without blazer or vest or short sleeve for wear with blazer. Dacron-polyester cotton blend. (See illustration)
- Scarf - silk or nylon with small arrowhead insignia interweave or matched motif, in various sizes for wear as muffler, scarf, in hair or as handkerchief. (See illustration)
- Skirt - A-line with 1 inch or small waistband combination synthetic (wool material) (jacket, vest and skirt can all be of combination wool jersey or cotton just so pieces match in material weight and color--one is washable, other must be dry cleaned. (See illustration)

Length of skirt or dress up to maximum of 2 inches above mid-knee.

Hat - pillbox, made of material to match jacket, vest, skirt and dress; similar to United Airlines Stewardess style 1969

Straw-rough-braid with small brim, gross-grained and stitched cordovan colored plastic band insert.

Field

Any of the above articles, except dress, plus option and when prescribed by the Superintendent and depending on duty, of substituting cullottes or slacks for skirt. These should be of same material as jacket and vest.

Work

Proper green-colored dress or jumper as illustrated.

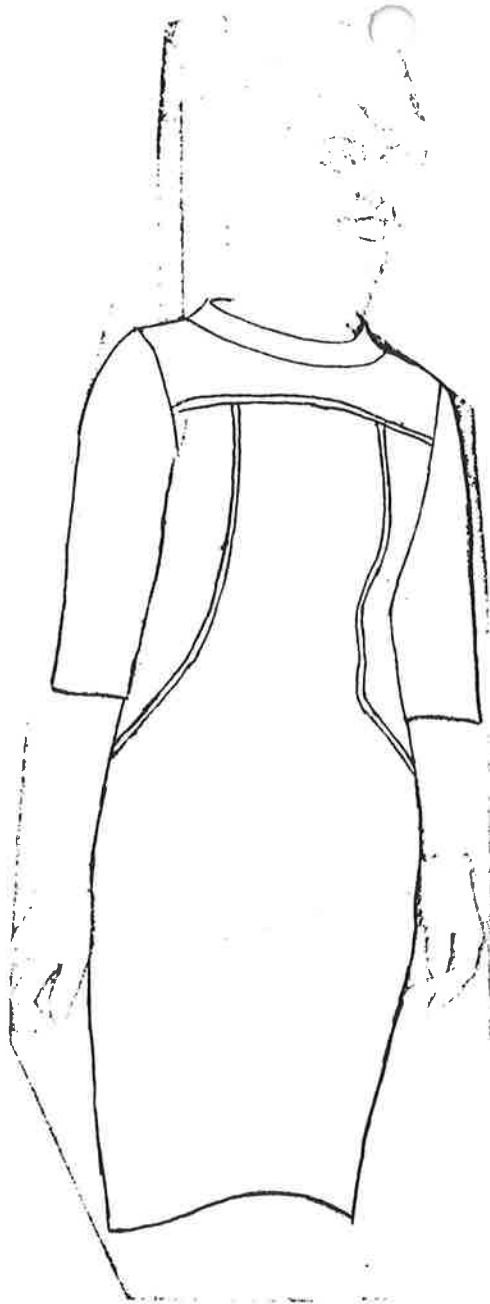
Optional

All-weather coat - (hat to match) Balmacca features Ze Pel treated for water with or without zipper acrylic pile liner. (See illustration)

Sweater - standard green-colored, long-sleeved cardigan style wool or nylon.

Gloves - white if cloth, cordovan if leather or plastic

Purse (or handbag) - white if cloth, cordovan if leather or plastic



Dress

Orlon, acrylic, wool jersey knit
yoked shift. Welt seams, standup
collar. Long back zipper.

(Cost \$18/25) Dry clean

Nameplate in gold and cordovan

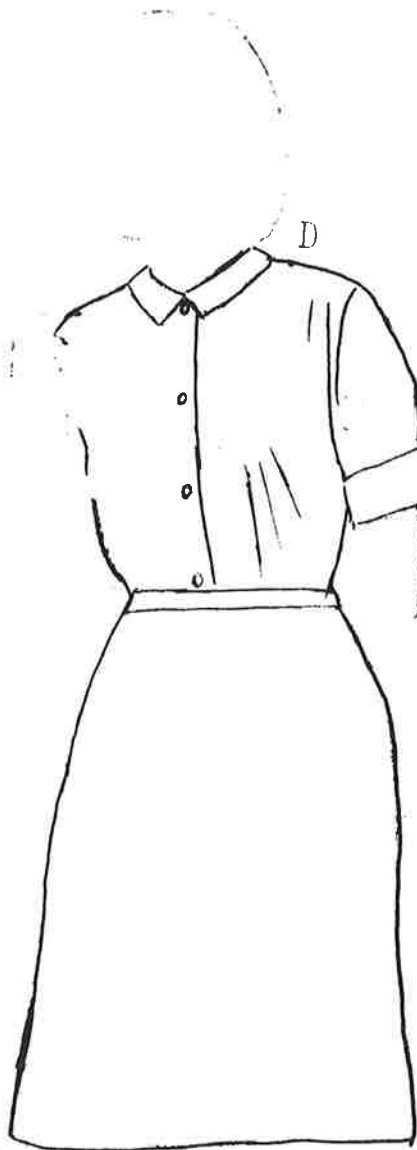


Hat

Pillbox in matching color of dress and
made of same material orlon-acrylic knit
with contrasting gross grained cordovan
colored ribbon trim. (Cost \$3.50/5.00)



DRAPED PILLBOX comes in wool jersey or
rayon satin. Lovely design has soft petal ef-
fect. Combs hold hat securely in place. Fits
all headsizes.



A
Also
Women's Sizes

Blouse

White bermuda or peter pan-type collar. Dacron-polyester and cotton broad cloth, roll-up or sleeveless.

Machine wash--tumble dry, perma-press no ironing.

(Cost \$3.50/5.00)

Skirt

A-line, small waistband, no pleats. perma-press, dacron-polyester and cotton blend

or

orlon acrylic wool jersey double knit

Machine washable, tumble dry, no ironing.

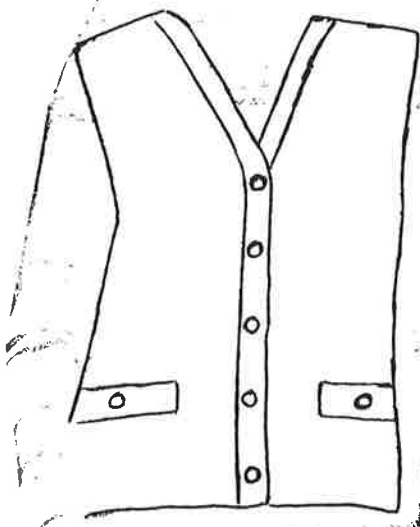


Jackets

Blazer-type of 100% orlon acrylic double knit V-neck jacket, double breasted with gold colored ladies size NPS buttons. Dry clean.

(Cost about \$25/30)

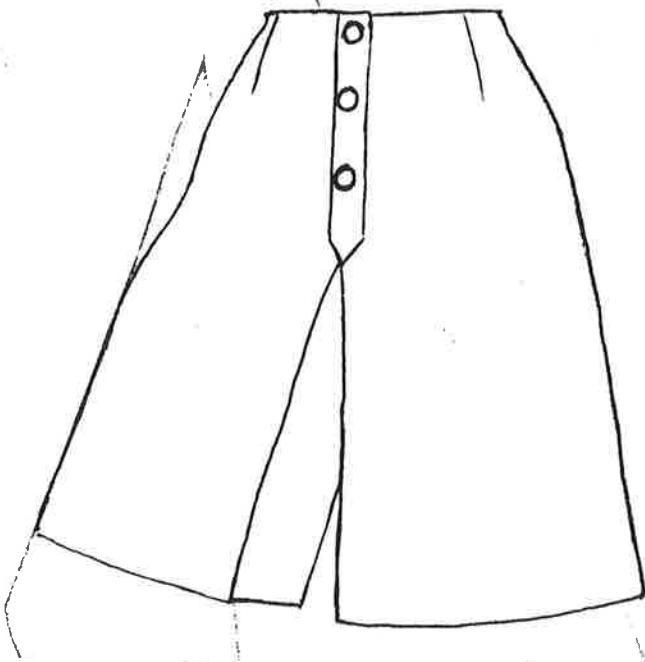
Ladies name pin and arrowhead insignia on left sleeve.



V-neck vest - same color as above, 100% orlon acrylic double knit to acetat tricot. Buttons gold NPS. Dry clean.

(Cost about \$15)

Ladies name pin.



Culottes

Perma-press, dacron-polyester
and cotton.

3-button placket closing or
plain.

Machine washable, tumble dry.

(List about \$6.00)



Slacks

Perma-press dacron-polyester and
cotton blend, french waistband,
side zipper.

Machine washable, tumble dry.

No ironing.

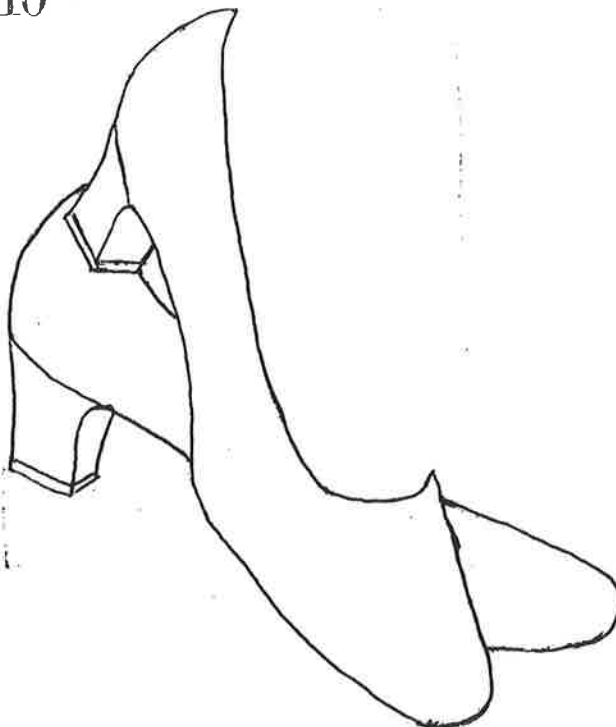
(Cost \$5.00)



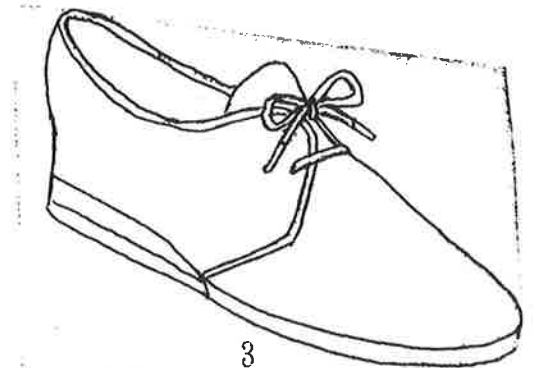
Sweater

Cardigan type - light wool or
nylon knitted, long sleeves.

3
1088



two types of shoes (should be cordovan
colored).



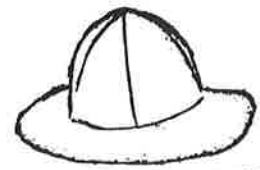
Soft, Grain-Leather Wedge 888

3 LEATHER-COVERED WEDGE-HEEL OXFORDS.
Good looking, extra-comfortable—perfect for
all-day wear on the job. Rich, grain-leather uppers.
Springy and long-wearing cushion-crope rubber
outsoles. Styled with the popular softly-rounded
square toe. Shpg. wt. 1 lb. 6 oz.

All-weather coat

Arrowhead insignia on left shoulder.

Hat to match color of coat.



The classics . . . ready for rain or shine!

All coats on this page are in polyester-and-cotton blend. Just machine wash and touch up with an iron. ZE PEL® treated for water- and stain-repellency.

[A] and [C] with or without acrylic pile (cotton-backed) liner.

A BALMACAN features classic styling for year 'round, rain- or shine wearability. With or without zip-out liner. Deep yoke lining of self fabric. Dry clean liner. Charge it—see p. 479.

Misses sizes: 8, 10, 12, 14, 16, 18, 20. State size.

Colors: 17 maize yellow; 33 ice blue; 37 navy blue; 15 oyster (an off-white, slightly gray-beige). State color number-and-name.

A 261-0324 D- With Zip-Out Liner. Wt. 3 lbs. 5 oz.21.90

A 261-0431 D- Without Zip-Out Liner. Wt. 2 lbs. 1 oz.15.90



Ladies summer straw hat.

Similar color to mens' straw hat.

Rough straw braid hat with small
brim, gross-grain and stitched
cordovan colored plastic band.



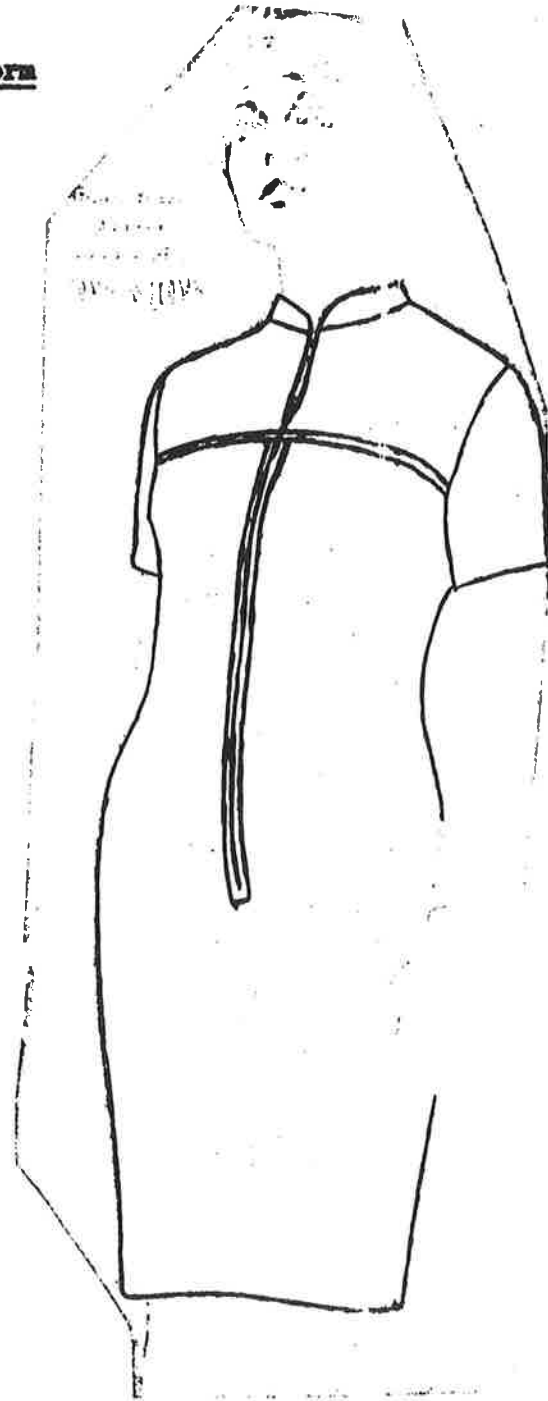
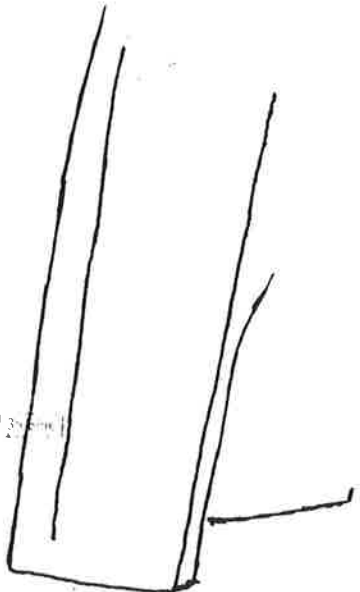
Silk scarf



White with very small arrowhead
insignia in cordovan colored
motif. Large, medium and small
size for wear with dress, hair or
as handkerchief.



Work Uniform



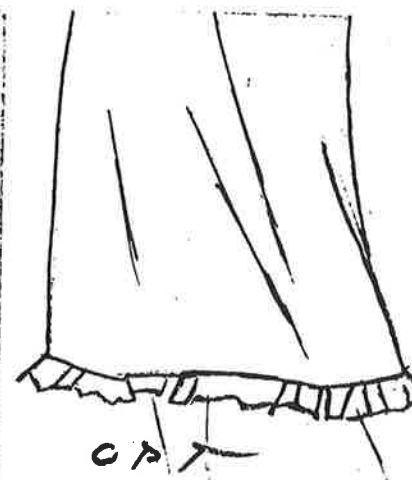
Hiers. Detachable self belt. Darts on chest. Split raglan short sleeves. No chest pocket. Size: 10, 12, 14, 16, 18. State size. Colors 35 blue; 25 green. State color number 10. Name: white. Ordering: A 527-2871 D. 14.97



Mini length
to show young knees
and slim legs—
" wonderful look for sports.



The regular short skirt
is for everyone!
Practical for busy
lives—so right-looking.



Midi length
is coming on strong for
after dark—perfect for
wearing at home or to parties.

Length of dresses or skirts

To maximum of two inches above the middle of the knee.