

UNITED STATES
DEPARTMENT OF THE INTERIOR
NATIONAL PARK SERVICE
WASHINGTON 25, D. C.

May 9, 1958

NATIONAL PARK SERVICE ADMINISTRATIVE MANUAL - REVISED

VOLUME 1 - ADMINISTRATION - AMENDMENT NO. 19

PART 160 - UNIFORMS - AMENDMENT NO. 5

Memorandum

The following amended pages are attached for insertion in your copy of the Manual:

<u>Part</u>	<u>Chapter</u>	<u>New Pages</u>	<u>Destroy the Superseded Pages</u>
160	2	1, 2, 3, & 4	1, 2, 3, & 4
	6	1, 2, 3, & 4	1, 1a, 2, 3, & 4

This amendment permits the use of a single layer of cloth over the shoulders and back of the field jacket. Service badges are now to be worn on the uniform shirt above the left pocket flap. Specifications for the uniform shirt have been revised to provide a means which will permit the badge to be more easily placed in its proper position and fastened more securely to the shirt. The Department length-of-service emblem is authorized to be worn in the buttonhole of the left lapel of the uniform coat.

It may be a month or more before the newly designed shirts will be available from uniform suppliers. It is suggested that anyone planning to purchase a supply of new shirts wait until they are available. Shirts of the old design may be worn until June 1, 1959. Service personnel may continue to wear the badge on the pocket flap until they have obtained shirts of the new design. As soon as new shirts replace old ones the badge should be moved to the approved location. There appears to be no reasonable way to avoid a period during which there will be a temporary lack of uniformity in the positioning of the badge.

When the amended pages have been properly inserted in the Manual, please file this cover memorandum.

Hilary A. Tolson
Assistant Director

Attachment

Interior - Duplicating Section - Washington, D. C.

UNITED STATES
DEPARTMENT OF THE INTERIOR
NATIONAL PARK SERVICE
WASHINGTON 25, D.C.

NATIONAL PARK SERVICE ADMINISTRATIVE MANUAL - REVISED

VOLUME 1 - ADMINISTRATION - AMENDMENT NO. 10

PART 160 - UNIFORMS - AMENDMENT NO. 4

Memorandum

The following amended pages are attached for insertion in your copy of the Manual: (For the convenience of those who are maintaining only Part 160, it will be noted that this is the fourth amendment to that Part only. It is the tenth amendment to Volume 1 as a whole).

<u>Part</u>	<u>Chapter</u>	<u>New Page</u>	<u>Destroy the Superseded Page</u>
160	1	1	1
	2	2	2
	3	1	1
	6	1 & 2a	1 & 2a

The uniform regulations have been amended to enable the Director to authorize other employees to wear the regulation uniform; to delete the specification of 12-ounce weight for summer uniforms; restoring the overseas type of cap with the standard uniform for women; clarifying the location of the badge to be worn on the left breast pocket of coats and field jackets, and the accountability of badges and collar insignia.

Make a pen and ink change in Chapter 2, page 3, last sentence of first paragraph, correcting word "work" to "vorn".

When the amended pages have been properly inserted in the Manual, please file this cover memorandum.

Henry A. Tolson
Assistant Director

Attachment

UNITED STATES
DEPARTMENT OF THE INTERIOR
NATIONAL PARK SERVICE
WASHINGTON 25, D.C.

March 20, 1957

NATIONAL PARK SERVICE ADMINISTRATIVE MANUAL - REVISED

VOLUME 1 - ADMINISTRATION - AMENDMENT NO. 7

PART 160 - UNIFORMS - AMENDMENT NO. 3

Memorandum

The following amended pages are attached for insertion in your copy of the Manual: (For the convenience of those who are maintaining only Part 160, it will be noted that this is the third amendment to that Part only. It is the seventh amendment to Volume 1 as a whole).

<u>Part</u>	<u>Chapter</u>	<u>New Page</u>	<u>Destroy the Superseded Page</u>
160	2	2	2
	5	1	1

This amendment permits the superintendent to authorize the use of Dacron-wool material for summer uniforms. Also, in parks where extremely cold winter weather prevails, a hat, similar to that bearing the trade name "North King", in beaver brown color and with embroidered NPS insignia, may be worn with the winter patrol uniform.

When the amended pages have been properly inserted in the Manual, please file this cover memorandum.

Harvey A. Tolson
Assistant Director

Attachment

UNITED STATES
DEPARTMENT OF THE INTERIOR
NATIONAL PARK SERVICE
WASHINGTON 25, D.C.

March 8, 1957

NATIONAL PARK SERVICE ADMINISTRATIVE MANUAL

VOLUME 1 - ADMINISTRATION - AMENDMENT NO. 6

PART 160 - UNIFORMS - AMENDMENT NO. 2

Memorandum

The following amended pages are attached for insertion in your copy of Volume 1, Part 160, of the Manual: (For the convenience of those who are maintaining only Part 160, it will be noted that this is the second amendment to that Part only. It is the sixth amendment to Volume 1 as a whole).

<u>Part</u>	<u>Chapter</u>	<u>New Page</u>	<u>Destroy the Superseded Page</u>
160	6	1	1

As the result of a survey conducted by this Office, it has been determined that there shall be no change made at this time in the design of the badges worn by Service uniformed personnel nor will there be any change in the designation of the position of the official or employee wearing the badges.

It will be noted, however, that the amendment specifically indicates those classes of employees who will wear the several badges. Superintendents will be required to insist that every uniformed employee, without exception, shall wear the badge designated for his particular occupational designation.

When the amended pages have been properly inserted in the Manual, please file this cover memorandum.

Henry A. Tolson
Assistant Director

Attachment

UNITED STATES
DEPARTMENT OF THE INTERIOR
NATIONAL PARK SERVICE
WASHINGTON 25, D.C.

October 5, 1956

NATIONAL PARK SERVICE ADMINISTRATIVE MANUAL

PART 160 - UNIFORMS - AMENDMENT NO. 2

Memorandum

The following amended pages are attached for insertion
in your copy of Volume 1, Part 160, of the Manual:

<u>Part</u>	<u>Chapter</u>	<u>New Pages</u>	<u>Superseded Pages</u>
160	6	3 and 4	3 and 4

The wording "Army or Navy" and "Army, Navy, Marine
Corps, or Coast Guard" pertaining to service ribbons is amended
to read "Armed Forces". Employees are authorized to wear Depart-
mental Awards lapel emblems as part of the official uniform.

When the amended pages have been properly inserted in
the Manual, please file this cover memorandum.

Hilroy A. Tolson
Assistant Director

Attachment

Interior - Duplicating Section - Washington, D.C.

UNITED STATES
DEPARTMENT OF THE INTERIOR
NATIONAL PARK SERVICE
WASHINGTON 25, D.C.

September 11, 1956

NATIONAL PARK SERVICE ADMINISTRATIVE MANUAL

VOLUME 1 - ADMINISTRATION - RELEASE NO. 8

Memorandum

Attached is Part 160, Uniforms, released in the revised format of the National Park Service Administrative Manual. This Part supersedes the original Volume 19 in its entirety.

<u>Part</u>	<u>Chapter</u>	<u>New Pages</u>
160	Contents	1
	Introduction	1
	1	1 - 2
	2	1 - 4
	3	1
	4	1
	5	1
	6	1 - 4
	Index	1 - 2

When the attached Part has been properly inserted in the Volume 1 binder, please file this transmittal memorandum for future reference.

Hervey A. Tolson
Assistant Director

Attachment

Interior - Duplicating Section - Washington, D.C.

NATIONAL PARK SERVICE ADMINISTRATIVE MANUAL

Volume 1

Part 160

Uniforms

CONTENTS

Introduction

Chapter 1 - Regulations

2 - Standard uniform

Coat

Field jacket

Trousers

Summer uniforms

Shirts and ties

Hats and caps

Shoes and socks

Overcoat and raincoat

3 - Standard uniform for women

4 - Boatman's uniform

5 - Special uniforms

Winter patrol uniform

Registered Nurse Employees' Uniform

6 - Badges, insignia, and accessories

Badges

Insignia

Illustrations

Leather accessories

Buttons

Alphabetical index

INTRODUCTION

This part of Volume 1 of the National Park Service Administrative Manual deals with the uniform worn by field personnel of the National Park Service.

The fundamental purposes of the uniform are to symbolize the National Park Service and to identify the wearer to park visitors. Accordingly, its use must be limited to the Service field personnel whose principal duties are to meet visitors and to protect the parks and monuments. The Director, however, may approve specific exemptions with respect to the wearing of the uniform.

Regulations governing the wearing of the uniform, the items of dress officially approved as constituting the regulation uniform, and the responsibility for the correctness of the articles and the appropriate use of the uniform are outlined in this part.

Complete descriptions of each item of clothing and insignia, together with illustrations, are included.

REGULATIONS

The uniform regulations identify and prescribe standard National Park Service uniforms for men and women. The standard uniform including badges, insignia, and accessories shall be adhered to by those designated to wear it.

However, the regulations also permit authorization of uniform dress other than the standard uniform to provide appropriate apparel for defined conditions or circumstances. These excepted or special uniforms, such as the boatman's, winter patrol, and registered nurses' uniforms should be worn only when conditions require their use and as specifically authorized.

The following officials and employees of the National Park Service, whether permanent or temporary, shall wear the regulation uniform as prescribed and authorized and when in a duty status in any of the areas administered by the National Park Service: Superintendents, assistant superintendents, park rangers, naturalists, historians, park guards, museum attendants, tour leaders, and other employees when authorized in writing to do so by the Director or the superintendent.

The uniform is not to be worn by an official or employee when he is not in a duty status. Superintendents may, however, wear the uniform outside of the park in their discretion. Other members of the field personnel may wear the uniform outside of the area when authorized to do so by the superintendent.

The standard uniform for men and women is as prescribed in Chapters 2 and 3. The coat shall be worn as part of the standard uniform on all normal occasions. It may be dispensed with only during hot weather when authorized by the superintendent. The overcoat, trench coat, and raincoat shall be considered an essential part of the standard uniform when weather conditions require such use. The field jacket may be prescribed for regulation uniform wear in off seasons.

The superintendent is personally responsible for the uniformity in the dress of all members in his organization required to be in uniform. It is his responsibility to see that the authorized uniform of every individual is correct in every detail in accordance with these regulations; that it is in compliance with pattern and material specifications; that it is neat, clean and pressed; that it is worn when required; and that it is worn

UNIFORMS
Regulations

Part 160
Chapter 1
Page 2

properly with the required articles and accessories and without additions or decorations, except for Armed Forces Service ribbons.

Where the regulations provide for a choice of materials, colors, or type of garment, it shall be the duty of the superintendent to prescribe which material or color shall be used in order to maintain complete uniformity of dress within a park or within a specified district in the park. Related articles of a uniform shall be of the same material and weight. The superintendent shall also prescribe conditions for the use of the excepted or special uniforms and for all seasonal changes in uniform. These instructions should be in writing.

The wearing of the National Park Service uniform is an official, not a personal, matter and uniform allowances have been provided to help bear the cost of uniform maintenance.

National Park Service uniformed personnel shall render the military salute during the hoisting, lowering, or passing of the flag of the United States. When not in uniform, men should remove the headdress with the right hand, holding it at the left shoulder, the hand being over the heart. Men without hats should salute in the same manner. Women not in uniform should salute by placing the right hand over the heart.

These regulations supersede all previously issued uniform regulations.

STANDARD UNIFORM

Coat

Style. Three button; bellows back; patch side pockets (without bellows); two pleated breast pockets; all outside pockets to have flaps fastened with small Service buttons; similar in style to the Naval aviators' working uniform; and subject to the following notes on tailoring:

1. The collar of the coat is to be cut so that it fits snugly to the shirt collar.

2. The shoulders of the coat should be cut directly to the point of the shoulder; that is, the seam of the shoulder between the coat and the arm should be exactly flush with the outside of the arm.

3. The body of the belted coat should be tailored snugly but not tight enough at the waist to pull on the buttonholes. The belt should be located exactly at the small of the back.

4. The length of the sleeve should come to the break between the hand and the wrist at the beginning of the thumb when the arm is held at a natural position at the side of the body.

5. The tail of the coat should be cut to cover the seat completely and should extend to the bottom of the cheeks of the buttocks. The vent in the back of the coat is to extend up to the bottom of the belt.

6. Regulation National Park Service buttons are prescribed.

7. Forestry green elastique cloth, 16 to 22-ounce weight, is prescribed for the coat.

Field Jacket

The National Park Service field jacket is slightly longer than the conventional cossack, but shorter than the cruiser type jacket. It has a waistband approximately two inches wide with two adjusting buckles at sides. The jacket fastens in the front with full-length talon fasteners, and has two large pleated breast pockets with flaps fastened with small regulation buttons. The back of the jacket may be tailored with either a single or double layer of material. If two layers are used the outer one should

extend from the top of the breast pocket covering the shoulders and the full length of the back. With this design the lower part of the back provides a large pocket closing with talon fasteners on each side under arms.

Trousers

Style. Of same material as coat; two side, two hip, and one watch pocket; standard "field cut" as used by officers of the armed forces; without cuffs; subject to the following notes on tailoring:

1. The trousers should be without pleats or other embellishment at the waist. The width of the trousers at the bottom should be not less than 18" nor more than 19". The front pockets should be cut slightly diagonal, approximately a quarter-angle from the top and should be without tabs. The hip pockets should be tailored with flap to button.

2. The uniform trousers should be cut to wear with a belt. The elastique material should be tailored snug in the seat as it will stretch somewhat from wear. The trousers should hang straight in the back and break slightly at the front. The length of the trousers should be exactly to the top of the heel of where the heel connects with the shoe. Between 2 and 2½ inches of material should be turned up on the inside at the bottom of the trousers so that they will hold their shape and so that they will break properly at the front.

Summer Uniforms

For use in the parks where climatic conditions require a lighter weight uniform for comfort, lightweight gabardine, tropical worsted cloth, or Dacron and wool material, of about 12-ounce weight may be authorized by the Superintendent for the various articles of the standard uniform. The coat shall be of the same style as the coat described above, except that it will be without padding and without lining in the sleeves.

Shirts and Ties

Shirts. Standard collar-attached type, with shoulder straps, in steel gray color, with two pleated patch pockets are authorized for all normal duties. A 1-3/8" wide reinforcing strip of the same material should be sewed on the inside of the shirt centering on the left pocket and extending from the top seam of the

UNIFORMS
Standard Uniform

Part 160
Chapter 2
* Page 3

pocket flap to the first seam on the shoulder. Two small buttonholes for badge should be provided centering on the reinforcing strip. The lower buttonhole should be located 1-inch above the top seam on the pocket flap and the second one should be placed higher on the shirt so that the outside measurement between the two buttonholes is 1-1/8". A white shirt is authorized for formal occasions only.

For summer wear, shirts with convertible collars may be worn open at the neck, without neckties, when so authorized by the Superintendent. Such authorization, when granted, shall apply to all uniformed personnel within a park or within a specified district in a park. Summer shirts shall have long sleeves which must be worn at full length.

When available, shirts may be purchased with plastic or celluloid stays in the collar points for neatness, or a small non-visible spring collar clip may be used with the regulation shirt as a means of improving the appearance of the collar.

Neckties. Four-in-hand in dark green color.

If a tie clasp is used, the National Park Service emblem tie clasp is required.

Hats and Caps

Hat. Stiff brim, 3 to 3-1/2 inches wide and 4 to 4-5/8 inch crown, Belly color, with three ventilator holes, arranged in the form of an equilateral triangle, bottom leg of triangle 1 1/2 inches above brim, legs of triangle 1 inch, on each side of the hat. Hat to be worn with the approved leather hatband and two silver sequoia cones. Width of brim and height of crown of hat may be varied, within these dimensions, to suit the size and conformation of the wearer's head.

Helmet. In areas where the standard summer uniform is worn and it may be desirable for comfort, a helmet, green in color, may be worn in lieu of the uniform hat in the discretion of the Superintendent and provided that all uniformed personnel shall wear the helmet.

Shoes and Socks

Style. Blucher type, dark brown color, lace shoes or oxfords, plain toe.

UNIFORMS
Standard Uniform

Part 160
Chapter 2
* Page 4

Material. First quality calfskin or horsehide leather.

Socks. Plain dark brown.

Overcoat and Raincoat

Overcoat. Double-breasted, four-button, mackinaw type with convertible collar, two side patch pockets and sewed-on half belt in back. Coat may be lined or unlined. Regulation National Park Service buttons are prescribed.

Forestry green all-wool beaver or melton cloth, 30-ounce weight, are prescribed for overcoat material. The choice of material shall be at the option of the employee.

Employees who now possess overcoats of elastique material may continue to wear them so long as they are serviceable and presentable, after which they should be replaced with overcoats of the prescribed material.

Raincoat. Double-breasted, full belt, set-in sleeves, calf length of lightweight-weatherproof material such as "Alligator" cloth, forestry or olive green color, is authorized.

Double-breasted, calf length, trench-type coat with raglan sleeves, full belt, and diagonal pockets, of forestry green weatherproof gabardine, may also be worn as a raincoat.

STANDARD UNIFORM FOR WOMEN

The standard uniform for all Service areas in which women are required to wear a uniform in the performance of their official duties while engaged in public contact, interpretive, or protective work, shall consist of the following:

Coat. The standard men's field jacket.

Skirt. Six-gore skirt of same material as jacket.

Cap. Overseas type, 16-ounce elastique.

Shirt. Convertible or standard Peter Pan collar type of steel gray color. Long sleeves buttoned at the wrist. Shirts may be worn open at the neck, without neckties, when so authorized by the superintendent. Such authorization, when granted, shall apply to all uniformed women personnel within an area.

Necktie. Draped bow of soft scarf material, or four-in-hand tie. Dark green in color.

Shoes. Oxford type, dark brown color, plain toe.

Stockings. Neutral color.

Belt. Not mandatory. (The standard National Park Service hatband may be adapted for this purpose, if desired, by the provision of buckles instead of the standard thong for lacing.)

Buttons. Regulation National Park Service buttons are prescribed.

Insignia. Same as for men employees. (See Chapter 6.)

Materials. Same as for men employees. (See Chapter 2.)

BOATMAN'S UNIFORM

For the national parks and other areas where park employees are assigned to boat operation the following articles of uniform are prescribed for wear by the boat captain, engineer, purser, or other employees of the boats:

Cap: Cap of the style worn by chief petty officers of the U. S. Navy, of blue material, black visor, black visor strap, black ribbon band and with cap ornament, gold anchors crossed, sewed on front.

Coat. Coat, dark blue, double breasted, four button, similar in style and cut to that of a chief petty officer of the U. S. Navy.

The regulation insignia "USNPS" shall be worn on the coat in the same manner prescribed for the standard uniform.

The coat shall be worn on all normal occasions; it may be dispensed with only during hot weather when the superintendent authorizes it.

Trousers. Of same material as coat, two side pockets, two hip pockets, and one watch pocket; similar in style and cut to that worn by the chief petty officer of the U. S. Navy.

Shoes and Socks. Black lace shoes or oxford type, with plain black socks.

Shirt. A white shirt and collar is prescribed for all occasions.

Neckties. Four-in-hand, black.

Buttons. Regulation National Park Service buttons are prescribed.

Summer Uniform. Same style as the winter uniforms, except they shall be white and of duck or other suitable material. Shoes and socks white; tie black; and shirt white. Cap, white.

SPECIAL UNIFORMSWinter Patrol Uniform

For the parks having established winter snow seasons, the following articles of uniform are prescribed for wear by rangers and other employees whose duties require their presence with visitors at snow activities and who are designated to wear them by the superintendent.

Cap. Ski cap of NPS design, having adjustable ear flaps and with embroidered NPS insignia on front. For wear in areas of extreme cold, a hat, similar to that bearing the trade name "North King" in beaver brown color, and with embroidered NPS insignia on front, may be worn.

Jacket. The NPS field jacket.

Trousers. Ski trousers of conventional (downhill) cut.

Boots. Ski boots of leather and of conventional design.

Socks. Heavy wool with dark green top, or steel gray ski leggings.

Parka. Lightweight-weatherproof green material.

Material. Forestry green elastique cloth, or gabardine, 12 to 22-ounce weight is prescribed for the jacket and trousers of the winter patrol uniform.

Registered Nurse Employees' Uniform

Dress. One piece, full skirt, short sleeves, buttons down front, built-in belt, turn back convertible collar. Color, white. Material, optional.

Cap. School cap (depending on the nursing school attended).

Stockings. White, nylon.

Shoes. Oxford, low heeled. Color, white.

Sweater. Cardigan type. Color, white or blue. Material, optional.

BADGES, INSIGNIA, AND ACCESSORIES

Badges

A National Park Service badge of appropriate design is considered to be an integral part of the Service uniform and will always be worn with the uniform.

Badges are prescribed for use as follows:

1. Superintendents--round badge--gold.
2. Assistant Superintendents--round badge--silver.
3. The Chief Park Ranger, Chief Park Naturalist, Chief Park Historian, and Chief Park Archeologist--shield badge "Park Ranger"--gold.
4. Permanent or seasonal Assistant Chief Park Rangers, Park Rangers, Park Naturalists, Park Historians, Park Archeologists, Tour Leaders, and other categories of employees for whom a specific badge is not provided--shield badge "Park Ranger"--silver.
5. Park Guards--shield badge "Park Guard"--silver.
6. Park Wardens--shield badge "Park Warden"--silver.
7. Fire Control Aids--shield badge "Fire Control Aid"--bronze.
8. Life Guards--cloth badge of approved design.

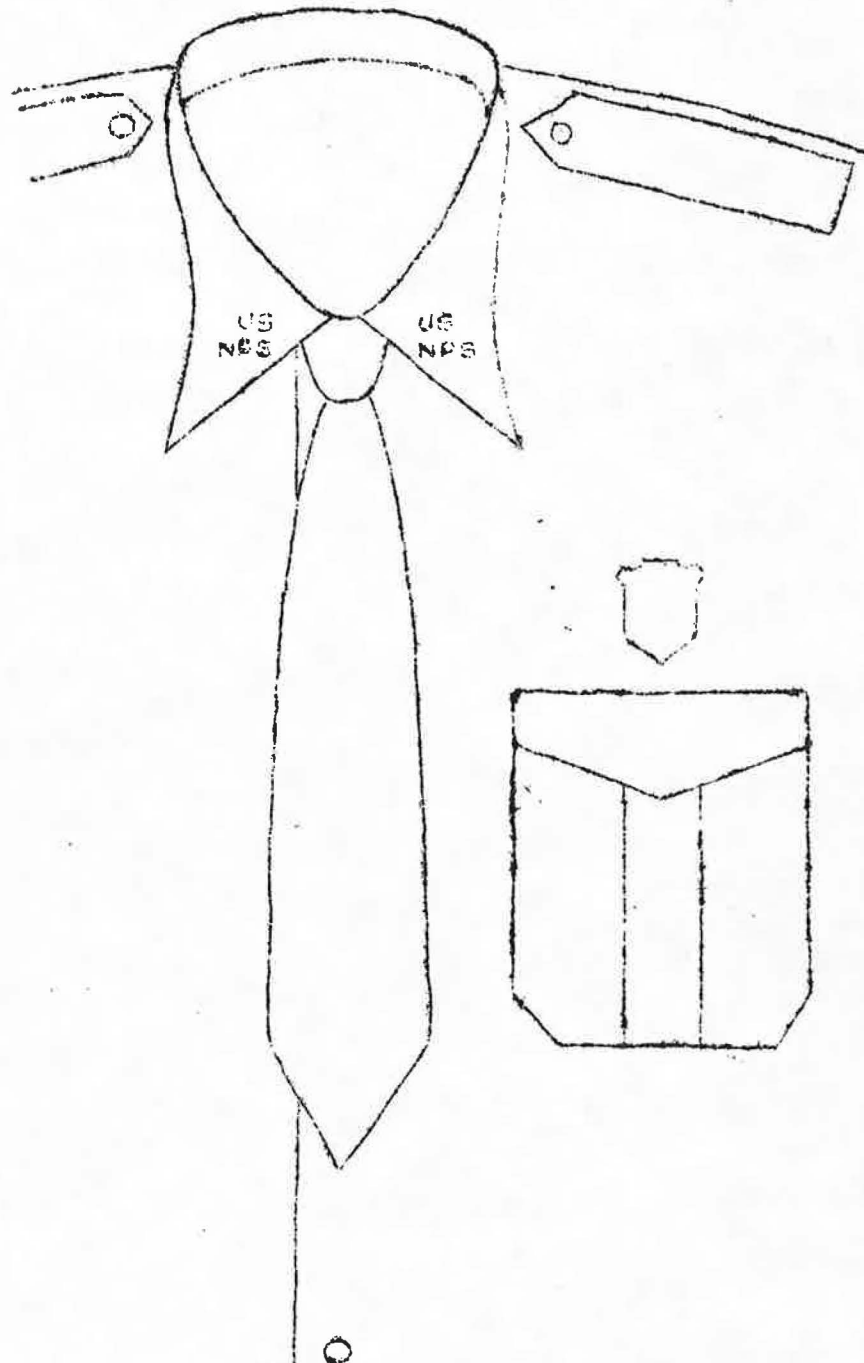
On uniform shirts the badge shall be worn threaded through the two buttonholes located immediately above the left pocket flap. On coats and field jackets it shall be worn properly centered below the button on the left breast pocket. (See illustrations, pages 2 and 2a.)

All badges shall remain the property of the Government.

A deposit will not be required for the safekeeping of badges and collar insignia. Each employee must be informed that, unless the badge and collar insignia are returned in good condition, a deduction of \$5.00 will be made for each badge which may be lost.

UNIFORMS
Badges, Insignia, and Accessories

Part 160
Chapter 6
* Page 2



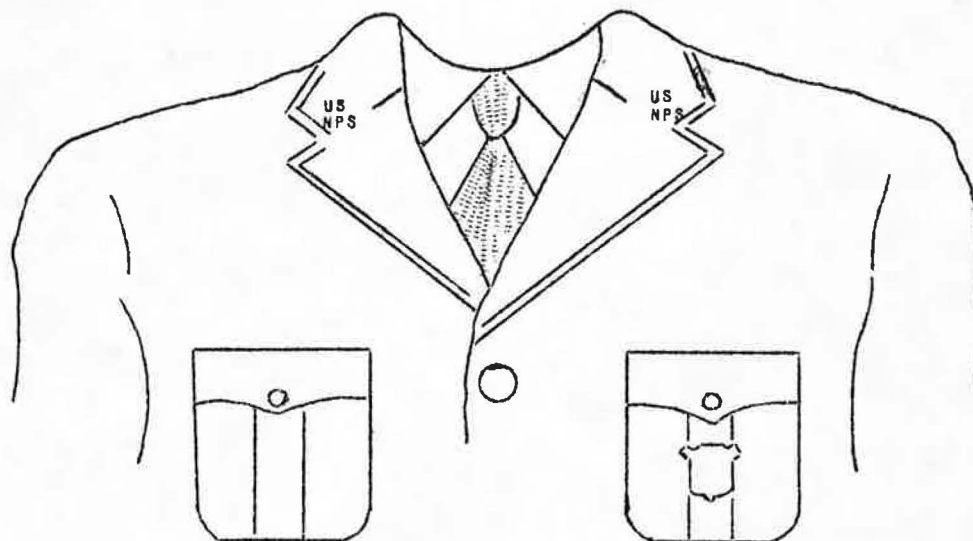
Correct Placement of Collar Insignia and Badge on Shirt

* Part 160, Amendment No. 5
* Volume 1, Amendment No. 19

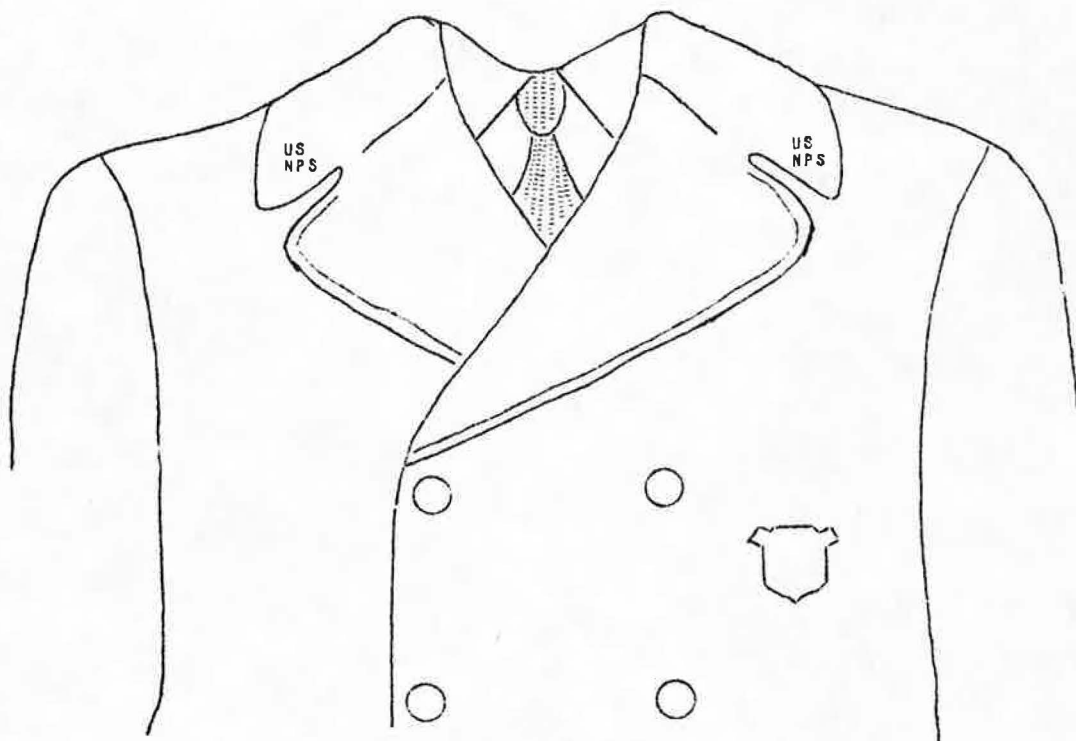
May 1958.

UNIFORMS
Badges, Insignia and Accessories

Part 160
Chapter 5
* Page 2a



Correct placement of collar insignia and badge on coat.



Correct placement of collar insignia and badge on overcoat.

* Part 160, Amendment No. 4
* Volume 1, Amendment No. 10

October 1957.

UNIFORMS
Badges, Insignia, and Accessories

Part 160
Chapter 6
* Page 3

Insignia

Collar Insignia. Of gold color, shall be worn on coats, field jackets, and shirts. One device shall be attached in a horizontal position to each side of the collar. (See illustrations, pages 2 and 2a.

Service Insignia. Indicating length of service as a member of the National Park Service is prescribed as follows:

For each year of completed service up to five years, a black braid, 1/8-inch wide and 2 inches long.

For each five-year period of completed service, a silver embroidered star. After the first star is earned, bars shall be discontinued to indicate service of less than five-year periods.

The Service insignia shall be worn on the cuff of the left sleeve of the coat and field jacket. The lower stripe or star shall be placed 2-1/2 inches above end of sleeve or one inch above the cuff on the field jacket.

Service stars are available in units of one to six. Units of one to four stars are arranged horizontally. Units of five and six stars are arranged in triangular pattern. When seven stars are to be worn, a unit of four stars and one of three may be used, and when eight stars are to be worn, a unit of three and one of five stars may be used. Field office memoranda requesting stars should indicate the number of each unit needed.

Armed Forces Service Ribbons and Departmental Awards Lapel Emblems. All uniformed employees of this Service may wear on the National Park Service uniform any ribbons to which they are entitled for service in the armed forces.

Those employees who have received Departmental Awards either for distinguished service or meritorious service, are authorized to wear the appropriate lapel emblem as part of the official uniform. The Departmental length-of-service emblem may also be worn.

Shoulder Patches. Prescribed for use by all uniformed personnel of the Service. The shoulder patch is made of washable thread embroidered on linen warp. The patches will be sent to all field areas, through the Washington Office, and they are to be sewn to the left sleeve of all uniform coats, jackets, and shirts, except raincoats. They are to be sewn in the center of

the sleeve, with the top of the insignia 2 inches below the shoulder seam, so that the arrowhead will appear perpendicular when the arm is held in a relaxed position at the side.

Leather Accessories

Hatbands. Of calfskin, cordovan color, 1-1/8-inch wide, embossed with evergreen twigs and cones and the letters "U.S.N.P.S.", and ornamented with two silver sequoia cones.

Embossed Belt. A belt of leather, 1/8-inch in thickness, and 1-1/2 inches wide, embossed with a design similar to the hatband, with a nickel-plated buckle.

Chin Strap. Of calfskin, and of same design as the hatband, cordovan color, embossed with evergreen twigs and cones, and the letters "U.S.N.P.S.", with silver sequoia cone fasteners.

Head Strap (Optional). Plain leather head straps, 1/2-inch wide, cordovan color. When the head strap is to be worn, the hat brim should be pierced by the employee as no provision is made in specifications for hats to be fitted with eyelets.

Materials. First quality calfskin or horsehide leather is required. All leather articles and accessories described in this section shall be of uniform cordovan color.

Buttons

Buttons of three sizes, large for overcoats, medium for coats, and small for pocket flaps, of bronze, are prescribed.

ALPHABETICAL INDEX TO PART 160

	<u>Ch.</u>	<u>Pg.</u>		<u>Ch.</u>	<u>Pg.</u>
Accessories - Badges, insignia, etc.	6	1	Introduction	-	-
Army or Navy Service ribbons	6	3	Jacket - Field	2	1
Badges	6	1	Jacket - Winter patrol ...	5	1
Belt - embossed	6	3	Leather accessories	6	3
Belt - Women's	3	1	Material - Head strap	6	4
Boatman's uniform	4	1	Material - Shoes & socks .	2	3
Boots - Winter patrol ..	5	1	Material - Winter patrol .	5	1
Buttons	6	4	Material - Women's	3	1
Buttons - Boatman's	4	1	Navy, or Army, Service ribbons	6	3
Buttons - Women's	3	1	Neckties - Boatman's	4	1
Cap - Boatman's	4	1	Neckties - Standard	2	3
Cap - Registered nurse employees'	5	1	Neckties - Women's	3	1
Cap - Winter patrol	5	1	Overcoat and raincoat	2	4
Caps - Hats and	2	3	Parka - Winter patrol	5	1
Chin strap	6	3	Patches - Shoulder	6	3
Coat - Boatman's	4	1	Raincoat - Overcoat and ..	2	4
Coat - Standard	2	1	Registered nurse employees' uniform	5	1
Coat - Women's	3	1	Regulations	1	1
Collar insignia	6	1	Ribbons - Army or Navy Service	6	3
Dress - Registered nurse employees'	5	1	Service insignia	6	1
Embossed belt	6	3	Service ribbons - Army or Navy	6	3
Field jacket	2	1	Shirt - Boatman's	4	1
Hat - Women's	3	1	Shirt - Women's	3	1
Hatbands	6	3	Shirts and ties - standard	2	2
Hats and caps - Standard	2	3	Shoes - Registered nurse employees'	5	1
Head strap (optional) ..	6	4	Shoes - Women's	3	1
Helmet - Standard	2	3	Shoes and socks - Boatman's	4	1
Illustrations	6	2	Standard	2	3
Insignia	6	1	Shoulder patches	6	3
Insignia - Collar	6	1			
Insignia - Service	6	1			
Insignia - Women's	3	1			

UNIFORMS
Alphabetical Index to Part 160

Part 160
Index
Page 2

	<u>Ch.</u>	<u>Pg.</u>
Skirt - Women's	3	1
Socks - Standard	2	3
Socks - Winter patrol ..	5	1
Special uniforms	5	1
Standard uniform	2	1
Standard uniform for women	3	1
Stockings - Registered nurse employees'	5	1
Stockings - Women's	3	1
Strap - Chin	6	3
Strap - Head (optional)	6	4
Style - Coat	2	1
Style - Shoes and socks	2	3
Style - Trousers	2	2
Summer uniforms - Boatman's	4	1
Standard	2	2
Sweater - Registered nurse employees'	5	1
Ties - Shirts and	2	2
Trousers - Boatman's ...	4	1
Trousers - Standard	2	2
Trousers - Winter patrol	5	1
Uniform - Boatman's	4	1
Registered nurse em- ployees'	5	1
Special	5	1
Standard	2	1
Summer - Boatman's ...	4	1
Summer - Standard	2	2
Winter patrol	5	1
Women's standard	3	1