

CONTENTS

Belts	2
Buttons	2
Face Masks	2
Dress Coats & Jackets	3
Gloves	4
Hat Sizing Rings	4
Headwear	4-5
Liners & Hoods	6
Maternity	6
Nameplates, Patches & Emblems	7
Outerwear/Coveralls	8-11
Shorts	12
Skirt	12
Socks	12
Sweaters	13
Ties	13
Trousers	14-15
Volunteer	16
Lifeguard	17-19
Law Enforcement L.E.	20
Search & Rescue (SAR)	20
Shirts	21-24
Shoes, Boots & Shoe Strings	25
Fit Charts	26-39
Made to Measure/ Returns & Exchanges/ Ordering Information	40



NATIONAL PARK SERVICE

UNIFORM PROGRAM



NATIONAL PARK SERVICE

BELTS



EMBOSSED LEATHER BELT

NP7007 Unisex
(Fit Chart NP7007)

100% leather

Brown • USNPS Sequoia cone pattern design • Solid brass buckle • 1-1/2 inches wide • 3/16 inch thick leather • Size Range: 24-60



HEAVY-DUTY EMBOSSED LEATHER BELT

NP7008 Unisex
(Fit Chart NP7008)

100% leather

Brown • USNPS Sequoia cone pattern design • Solid brass buckle • 1-1/2 inches wide • 5/16 inch thick leather • Size Range: 24-68



REPLACEMENT BUCKLE

NP7109 Unisex

100% metal

Gold • Fits both Embossed and Heavy Duty Embossed belts • Size Range: One Size

BUTTONS



32 LIGNE DRESS COAT REPLACEMENT BUTTONS

NP7203B Unisex
100% bronze

Bronze • This button will replace buttons on the Dress Coat and the Service Dress Jacket • Size Range: One Size



24 LIGNE DRESS COAT REPLACEMENT BUTTONS

NP7204B Unisex
100% bronze

Bronze • This button will replace buttons on the Dress Coat and the Service Dress Jacket • Size Range: One Size

FACE MASKS



CLOTH FACE MASK

NP7003 Unisex
75% cotton / 25% poly

Grey • Adjustable ear loops for one-size-fits-all • Nose wire along the top to help mold the mask over the bridge of wearer's nose • **PLEASE ORDER THIS ITEM ONLY IN QUANTITIES OF 50. EX: 50, 100, 150, ETC** • WHEN PLACING AN ORDER FOR MASKS, PLEASE ONLY ORDER MASKS. IF YOU REQUIRE OTHER GARMENTS A SEPARATE ORDER SHOULD BE PLACED • Size Range: One Size

DRESS COATS AND JACKETS



SUMMER DRESS COAT

NP4104B Women's
(Fit Chart LFC-14)

NP4100B Men's
(Fit Chart MFC-02)

55% polyester / 45% wool

Green • Single vent back • Fully Lined • NPS shoulder emblem, Metal badge tab eyelets on left upper front • Petite sizing: the sleeves and body are 1 inch shorter • Tall sizing: the sleeves and body are 1 inch longer • Xtra Long sizing: the sleeves and body are 2 inches longer • Jacket is a non-stock. Please allow 16 weeks for delivery • Women's Size Range: 2-24, Men's Size Range: 36-54



WINTER DRESS COAT

NP4103B Women's
(Fit Chart LFC-14)

NP4101B Men's
(Fit Chart MFC-02)

55% polyester / 45% wool

Green • Single vent back • Fully Lined • NPS shoulder emblem, Metal badge tab eyelets on left upper front • Petite sizing: the sleeves and body are 1 inch shorter • Tall sizing: the sleeves and body are 1 inch longer • Xtra Long sizing: the sleeves and body are 2 inches longer • Jacket is a non-stock. Please allow 16 weeks for delivery • Women's Size Range: 2-24, Men's Size Range: 34-56



SERVICE DRESS JACKET

NP4105 Women's
(Fit Chart LFC-13)

NP4102 Men's
(Fit Chart MFC-02)

55% polyester / 45% wool

Green • Fully lined • Pleated breast pockets with scalloped flaps • Knit inserts in sides at waistband • Peak lapel • Petite sizing: the sleeves and body are 1 inch shorter • Tall sizing: the sleeves and body are 1 inch longer • Short sizing: the sleeves and body are 1 inch shorter • Long sizing: the sleeves and body are 1 inch longer • Extra long sizing: the sleeves and body are 2 inches longer • NPS Shoulder emblem, badge tab eyelets on left upper front • Jacket is a non-stock. Please allow 16 weeks for delivery • Women's Size Range: 2-26; Men's Size Range: 34-54



GLOVES



INSULATED BROWN GLOVES

NP7012 Unisex
(Fit Chart NP7012)

Palm 100% Rubbertec / shell 100% ripstop nylon

- Brown • Waterproof Insulated Gloves •
- Insulation: 40-gram Thinsulate •
- RubberTec palm provides durable grip
- Size Range: XS-XXL



LEATHER DRESS GLOVES

NP7023 Unisex
(Fit Chart NP7012)

100% leather

- Brown • Size Range: XS-XXL



LEATHER GLOVES

NP7013 Unisex
(Fit Chart NP7013)

100% leather

- Brown • Thinsulate Insulation 40 gram •
- Size Range: XS-XXL

HAT SIZING RINGS



HAT SIZING RINGS

NP7690B Unisex

Size rings will help determine not just the size of a person's head, but also their head shape

HEADWEAR



WINTER FLAT FELT HAT

NP7103 Unisex
(Fit Chart NP7103)

100% felt

Tan • Montana Peak Crown • Side vent holes • Foam sweatbands • Stiff brim • Hat band and chin strap purchased separately • Sizing rings can be purchased separately through SPO to determine best size • Size Wide Oval is a nonstock size. Please contact Customer Service if this size is needed. • Please be aware non-stock sizes can take up to 10 weeks to ship. • Size Range: 6.34-7.58



SUMMER FLAT STRAW HAT

NP7104 Unisex
(Fit Chart NP7104)

100% straw

Tan • Montana Peak Crown • Side vent holes • Foam sweatband • Double brim • Hat band and chin strap are purchased separately • Sizing rings can be purchased separately through SPO to determine best size • Size Wide Oval is a nonstock size. Please contact Customer Service if this size is needed. • Please be aware non-stock sizes can take up to 10 weeks to ship. • Size Range: 6.34-7.50



FUR TROOPER HAT

NP7113 Unisex
(Fit Chart NP7113)

100% nylon

- Green • Gore-Tex w/mouton fur trim •
- Fold down ear flaps • Chin strap •
- Insulated lining • Size Range: S-4XL



CHIN STRAP

NP7107 Unisex

100% leather

- Brown • One piece head strap with buckle
- Worn with NP7104 Summer Straw Hat and NP7103 Winter Felt Hat • Size Range: One Size



EMBOSSED HAT BAND

NP7009 Unisex
(Fit Chart NP7009)

100% leather

Brown • Two leather billet tips holding 3/4 inch brass metal rings • Sequoia cone ornament on billets • USNPS Sequoia cone pattern design • Order same size hat band as hat size • Tying instructions can be found in the size chart link • Size Range: 6.34-8.00

HEADWEAR

**HAT TRAP**

NP7202 Unisex
(Fit Chart C07202)

100% plastic

Black • Heavy duty molded plastic •
Size Range: One Size

**WATERPROOF WORK CAP**

NP7020 Unisex
(Fit Chart NP7020)

100% nylon

Ranger Green • Gore-Tex • NPS emblem
embroidered on front center • Size Range:
RG-XXL

**FLEX FIT BALL CAP**

NP7019 Unisex
(Fit Chart NP7019)

98% nylon / 2% spandex

Ranger Green • Medium weight ez-stretch
closure and quick dry feature • NPS
emblem embroidered on front center •
Size Range: S-XL

**WINTER HAT**

NP7000 Unisex
(Fit Chart NP7000)

100% nylon

Green • Gore-Tex Fleece lining • Ear flaps
with hook and loop closure • Fold-down
ear flaps • NPS emblem embroidered on
front center • Size Range: S-XL

**BREEZER WORK HAT**

NP7002 Unisex
(Fit Chart NP7002)

100% cotton mesh

Green • 4 inch brim • Allows cool breeze
around your head, the solid top keeps
sun rays off the top of your head • Stain
resistant sweat bands • National Park
Service embroidery on front center • Size
Range: S-XXL

**SUMMER BALL CAP**

NP7102 Unisex
(Fit Chart NP7102)

65% polyester / 35% cotton

Green • Plastic adjustable backstrap •
NPS emblem embroidered on front center
• Size Range: RG-XXL

**FLEECE CAP**

NP7191 Unisex
(Fit Chart NP7191)

100% fleece

Green • Recycled plastic ecologically sound
Ecospun fleece • NPS emblem embroidered
on front center • Size Range: S-L

**BALACLAVA**

NP7194 Unisex

90% polyester / 10% spandex

Black • Heavy-weight tech face fleece
• Protected by Ag-47 anti-microbial •
Acclimate dry fabrics wick moisture • Size
Range: One Size

**COWBOY STYLE STRAW HAT**

FS7101 Unisex
(Fit Chart FS7101)

100% straw

White • Hat band included • 3 1/2 inch
brim • Stetson with rancher crease •
Circumferential vent • Size Range:
6.34-7.58



LINERS AND HOODS



FIELD JACKET ZIP OUT LINER

NP3100 Unisex
(Fit Chart MFC-40)

100% nylon

Black • Zip-out liner for the NP3144 and NP3103 Field Jackets
• Order same size as the NP3144 and NP3103 Field jackets •
Short sizing: the sleeves and body are 1 inch shorter • Long
sizing: the sleeves and body are 1 inch longer • Xtra Long sizing:
the sleeves and body are 2 inches longer • Size Range: XS-3XL



UNINSULATED GORE-TEX HOOD

NP3130 Unisex
(Fit Chart NP3130)

100% nylon

Green • Gore-Tex unlined Hood • Drawstring closure •
Order same size as Jacket • Attaches to the following jackets:
NP3001, NP3002, NP3003, NP3004, NP3007 and NP3008 • Size
Range: M, XL, 3XL

MATERNITY



MATERNITY SHIRT

Long Sleeve

NP1308 Women's
(Fit Chart LFC-02)
65% polyester / 35% cotton

Gray • Two front breast pockets with button closure • Button up
front • Banded collar • NPS emblem on shoulder, nameplate
and eyelets on right upper front, badge tab eyelets on left upper
front • Size Range: XS-3XL

Short Sleeve

NP1309 Women's
(Fit Chart LFC-02)



MATERNITY PANT

NP2245 Women's
(Fit Chart LFC-09)

55% polyester / 45% wool

Green • Full elastic waistband that adjusts for fit • PRE-
MATERNITY SIZE = The uniform pant size that you regularly wear
• Size Range: 2-28

NAMEPLATES, PATCHES AND EMBLEMS

**ENGRAVED NAME PLATE****Pin Back**

NP7026 Unisex

Magnetic

NP7189 Unisex

100% metal

Gold plated brass • National Park Service Insignia • Size Range: One Size

**UNIFORM ENGRAVED NAMEPLATE****Pin Back**

NP7134 Unisex

Magnetic

NP7024 Unisex

100% metal

Gold plated brass • Size Range: One Size

**TWO LANGUAGE NAMEPLATE****Pin Back**

NP7140 Unisex

Magnetic

NP7025 Unisex

100% metal

Gold plated brass • Size Range: One Size

**SIGN LANGUAGE NAMEPLATE****Pin Back**

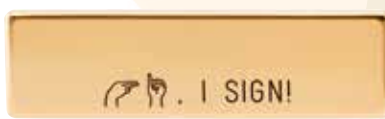
NP7137 Unisex

Magnetic

NP7028 Unisex

100% metal

Gold plated brass • Size Range: One Size

**I SIGN NAMEPLATE****Pin Back**

NP7205 Unisex

Magnetic

NP7206 Unisex

100% metal

Gold plated brass • Size Range: One Size

**RECOGNITION NAMEPLATE**

NP7138 Unisex

100% metal

Gold plated brass • Size Range: One Size

**VIP VOLUNTEER NAMEPLATE****Pin Back**

NP7135 Unisex

Magnetic

NP7027 Unisex

100% metal

Gold plated brass • Size Range: One Size

**FLAG PIN****Regular**

NP7030 Unisex

Veteran's

NP7029 Unisex

100% metal

Red, white, blue • Size Range: One Size

**NAME TAG**

EM3130 Unisex

100% cloth

Green • Not sewn on any item • Size Range: One Size

**NPS ARROWHEAD PATCH**

EM4723 Unisex

Sublimated / embroidered combination

Brown, green, white • Size Range: One Size

**VELCRO PARK RANGER BADGE EMBLEM**

EM4641 Unisex

Sublimated / embroidered combination

Gold, brown • Size Range: One Size

**LAW ENFORCEMENT BADGE EMBLEM**

EM3465 Unisex

Sublimated / embroidered combination

Gold • Hook and Loop back • Size Range: One Size



OUTERWEAR / COVERALLS



FLEECE JACKET

With Badge Tab

NP3006 Unisex
(Fit Chart MFC-12)

100% recycled plastic ecologically sound EcoSpun fleece

Green • Two front pockets • Part of the Outerwear System • Can be interchanged with NP3002, NP3001, NP3004, NP3003, NP3007, NP3008 • NPS shoulder emblem • Badge tab (NP3006) • Size Range: XS-4XL

Without Badge Tab

NP3005 Unisex
(Fit Chart MFC-12)



WAIST-LENGTH GORE-TEX OVERSHELL

With Badge Tab/Nameplate

NP3002 Unisex
(Fit Chart MFC-12)

100% nylon

Green • Two outside zippered hand warmer pockets • Two-way front zipper with snap closure • Fully lined and uninsulated, Gore-Tex • Inside zipper for attaching waist length liner • Designed to accept NP3130 Gore-Tex hood • Part of the Outerwear system • Can be interchanged with NP3005, NP3006, NP3004, NP3003, NP3007, NP3008 • NPS shoulder emblem • NP3002 has Nameplate eyelets on right upper front, Badgetab eyelets on left upper front • Size Range: XS-3XL

Without Badge Tab/Nameplate

NP3001 Unisex
(Fit Chart MFC-12)



HIP-LENGTH GORE-TEX SHELL

With Badge Tab/Nameplate

NP3004 Unisex
(Fit Chart MFC-12)

100% nylon

Green • Adjustable draw cord at waist • Two outside pockets and two inside pockets • Fully lined and uninsulated, Gore-Tex • Two way zipper and snap closure • Available with and without badge tabs and nameplate holder • Part of Outerwear system • Can be interchanged with NP3005, NP3006, NP3002, NP3001, NP3007, NP3008 • NPS shoulder emblem • NP3004 has Nameplate eyelets on right upper front, Badgetab eyelets on left upper front • Size Range: XS-3XL

Without Badge Tab/Nameplate

NP3003 Unisex
(Fit Chart MFC-12)



DOWN PARKA

With Badge Tab/Nameplate

NP3008 Unisex
(Fit Chart MFC-12)

100% nylon

Green • Zip close front pocket • Drawcord • Two-way front zipper with storm front • Part of the NEW Outerwear System • Can be interchanged with NP3005, NP3006, NP3002, NP3001, NP3003, NP3004 • NPS shoulder emblem • NP3008 has Nameplate eyelets on right upper front, Badgetab eyelets on left upper front • Size Range: XS-4XL

Without Badge Tab/Nameplate

NP3007 Unisex
(Fit Chart MFC-12)

OUTERWEAR / COVERALLS

**INSULATED VEST (FIELD)****With Badge Tab/Nameplate****NP3133** Unisex

(Fit Chart MFC-73)

100% nylon

Green • Two hand warmer pockets • EcoSpun fleece lined • Insulated with 60 gram 3-M • Stand up collar for added warmth and protection • NP3133 has Badge tab on left upper front, Nameplate holder on right upper front • Size Range: XS-2XL

Without Badge Tab/Nameplate**NP3129** Unisex

(Fit Chart MFC-73)

**RAIN COAT****NP3200** Unisex

(Fit Chart NP3200)

100% nylon

Green • Two front pockets • Waterproof • Stain resistant • Badgetab eyelets on left upper front • NPS shoulder emblem • Size Range: XS-4XL

**RAIN/WIND PANTS****NP3224** Unisex

(Fit Chart NP3118)

100% nylon

Green • All seams sealed with Gore-tex tape • Snap belt loops • Side hook and loop closure • Elasticized waistband • Snap closure at leg bottom • Short sizing: Inseam is 2 inches shorter • Long sizing: Inseam is 2 inches longer • Men's Size Range: S-2XL; Women's Size Range: S-XL



OUTERWEAR / COVERALLS



APEX WINDBREAKER

With Badge Tab/Nameplate

NP3010 Unisex
(Fit Chart MFC-17)

94% nylon / 6% elastane

Ranger Green • Lower front zip close pockets • Standing collar • Sport style collar • Napoleon pocket on left front • Adjustable draw cord at front hemline • NPS shoulder emblem • NP3010 has Badge tab on left upper front, Nameplate holder on right upper front • Size Range (with badge tab/np): S-4XL; Size Range (without badge tab/np): XS-4XL

Without Badge Tab/Nameplate

NP3009 Unisex
(Fit Chart MFC-17)



FIELD JACKET (FIELD/WORK)

With Badge Tab/Nameplate

NP3144 Unisex
(Fit Chart MFC-40)

65% polyester / 35% cotton

Green • Two button, adjustable cuff • Two outside pockets • Pen compartment • NP3100 Liner can be purchased separately to zip in • Size Long: The sleeves and body are 1 inch longer • NPS shoulder emblem • NP3144 has Badge tab on left upper front, Nameplate holder on right upper front • Size Range: XS-3XL

Without Badge Tab/Nameplate

NP3103 Unisex
(Fit Chart MFC-40)



TRENCH COAT

NP4007B Unisex
(Fit Chart MFC-36)

60% cotton / 40% polyester

Black • Back vent • 46 inch double breasted • Split raglan shoulder • Loose umbrella back yoke • Cut through pockets • This item is cut to order. An order will not be placed until an order is received • Size Range: 36-54



WORK JACKET

NP3154 Unisex
(Fit Chart MFC-12)

100% cotton

Green • Zipper front closure • Pencil pocket in left breast pocket • Interior left breast pocket • Two front slash pockets • Two front breast pockets with flaps • NPS shoulder emblem, Nametag on left upper front • Size Range: XS-3XL

OUTERWEAR / COVERALLS

**GAITER**

NP3128 Unisex
(Fit Chart MFC-69)

100% nylon

Green • Nylon instep strap • Inner zipper with outer snap • Size Range: RG & XL

**L/S UNLINED COVERALLS W/NAMETAG**

NP3152 Unisex
(Fit Chart NP3152)

100% cotton

Green • Full-length with zipper front closure • Two front breast pockets with zipper closures • Two quarter-top swing pockets with pass through • Two hip pockets and a pliers pocket • Short sizing: the sleeves and body are 2 inches shorter • Long sizing: the sleeves and body are 2 inches longer • NPS shoulder emblem, Nametag on right upper front • Size Range: S-3XL

**BIB COVERALLS**

NP3190 Unisex
(Fit Chart NP3190)

100% cotton

Green • Quilted nylon lining • Adjustable elastic shoulder straps • Two breast pockets • Two front pockets with side pass through for access to inside • Two hip pockets • Black nylon insulation with polyester batting • Sizes reflect chest sizing • Size Range: XS-3XL

**L/S INSULATED COVERALLS W/NAMETAG**

NP3156 Unisex
(Fit Chart MFC-26)

100% cotton

Green • Quilted nylon lining • Size Range: S-2XL

**ENDURANCE COVERALL**

NP3220 Unisex
(Fit Chart MFC-24)

65% cotton / 35% polyester

Gray • Two-way concealed Nomex taped brass break-away zipper, concealed snap at top of zipper & at neck • Napoleon chest pocket & a right front bag pocket with cell phone interior pocket • Elastic waist & deep-pleated back yoke for increased mobility. 11 total pockets for maximum storage • This flame-resistant garment meets the requirements of NFPA 2112 • Standard on Flame-Resistant Garments for Protection of Industrial Personnel Against Flash Fire • 2012 Edition; EN ISO 11612:2008, Protective clothing against heat and flame; EN 340:2003 • Protective clothing - general requirements; and IEC 61482-2:2009 • Protection: Arc Rating ATPV 9.0 calories/cm² • Size Range: 38-66



SHORTS



CARGO SHORTS

Men's

NP2143 Men's
(Fit Chart MFC-76)

65% polyester / 35% cotton

Green • Jean style waist band and belt loops • Button closure with zipper fly • Two front pockets • Two rear pocket with button through flaps • Two pleated cargo pockets with nonfunctional button • Men's Size Range: 28-60; Women's Size Range: 2-30



LIGHTWEIGHT SHORTS

NP2001 Unisex
(Fit Chart NP2001)

100% nylon

Green • Two side cargo pockets one with a pencil pocket • Two back pockets with zipper closures • Two additional front pockets • You may order these shorts in October and May ONLY! • Size Range: S-2XL



DUTY FLEX SHORTS

Men's

NP2251 Men's
(Fit Chart MFC-103)

Women's

NP2252 Women's
(Fit Chart LFC-02)

70% polyester / 28% cotton / 2% spandex

Ranger Green • Slider waistband • Zippered hidden cargo pocket • Reinforced knife notch at front pocket • Diamond crotch gusset • Men's Size Range: 28R - 60R; Women's Size Range: 04R - 30R

SKIRT



DUTY SKIRT

NP2107 Women's
(Fit Chart LFC-09)

55% polyester / 45% wool

Green • Two quarter pockets • Straight line fit • Two front darts • Fully lined • Waistband has elastic inserts for a more comfortable fit • Size Range: 4-26

SOCKS



SMARTWOOL OUTDOOR MEDIUM CREW SOCK

NP7018 Unisex
(Fit Chart NP7018)

63% wool / 35% nylon / 2% elastane

Brown • Extraordinary comfort • Exceptional fit • No-stink • Size Range: S-XL



DRESS CREW SOCK

NP7694 Unisex
(Fit Chart NP7167)

85% polypropylene / 10% nylon / 5% elastic

Brown • Mid-calf length • Size Range: S-XL



HIKING SOCK

NP7126 Unisex
(Fit Chart NP7126)

88% acrylic / 10% stretch / 2% spandex

Brown • High density pads under the ball and heel protects against shock, concussion, and abrasion • Low density pad in arch allows shoe to snug closer • Size Range: M-XL

SWEATERS

**PULLOVER SWEATER**

NP5002 Unisex
(Fit Chart MFC-89)

100% acrylic

Green • Badgetab eyelets on left upper front • Pullover design with V-neck opening • Twill elbow patches • Ribbed cuffs • Nameplate eyelets inside right upper front • NPS shoulder emblem • Size Range: XS-4XL

**PULLOVER WIND STOPPER SWEATER**

NP5003 Unisex
(Fit Chart MFC-89)

70% acrylic / 30% wool

Green • Badgetab eyelets on left upper front • Rib knit V-Neck Band • Elbow and shoulder patches • Nameplate eyelets inside right upper front • NPS shoulder emblem • Size Range: XS-2XL

**FULL ZIP CARDIGAN SWEATER**

NP5135 Unisex
(Fit Chart MFC-84)

100% acrylic

Ranger Green • Zip front with covered placket • Two front welt pockets • NPS emblem on left sleeve • Size Range: XS-2XL

TIES

**14 INCH CLIP ON TIE**

14 Inch Length
NP7132 Unisex

17 Inch Length
NP7130 Unisex

19 Inch Length
NP7131 Unisex

55% polyester / 45% wool

Green • Metal clip-on ready tied, breakaway • 3 inch width • Size Range: One Size

**FOUR-IN-HAND TIE**

Standard Length
NP7129 Unisex

Extra Long
NP7021 Unisex

55% polyester / 45% wool

Green • Size Range: One Size

**CROSS TIE**

NP7133 Women's

55% polyester / 45% wool

Green • Continental crossover tie with breakaway fastener • Size Range: One Size

**TIE TACK**

NP7136 Unisex

100% metal

Gold • NPS Arrowhead design with chain and bar backs • Size Range: One Size



TROUSERS



BDU CARGO PANTS

NP2002 Men's
(Fit Chart NP2101)

NP2003 Women's
(Fit Chart NP2003)

65% polyester / 35% cotton

Green • 6.76 oz. Flex-Tac ripstop fabric • Flex-Tac fabric with 4-way mechanical stretch • Front pockets sized for EDC items • Self-adjusting tunnel waistband • Articulated knees (kneepad ready - inside inseam) • Gusseted construction • 12 pockets, including double-deep cargo pockets • Men's Size Range: 28-54; Women's Size Range: 0-20



SERVICE TROUSERS

NP2006 Men's
(Fit Chart MFC-103)

NP2007 Women's
(Fit Chart LFC-09)

70% polyester / 28% cotton / 2% spandex

Ranger Green • Slider waistband (on Men's) • Zippered hidden cargo pocket • Reinforced knife notch at front pocket • Diamond crotch gusset • Men's Size Range: 28-52; Women's Size Range: 2-28



SUMMER DRESS TROUSERS

NP2101 Men's
(Fit Chart NP2101)

NP2105 Women's
NP2247 Women's
(Fit Chart LFC-09)

55% polyester / 45% wool

Green • Snug-Tex waistband (Men's) • Waistband has elastic inserts for more comfortable fit (Women's) • Reinforced front panel (Women's) • Two back pockets with flaps • Two quarter front pockets • Men's Size Range: 28-50; Women's Size Range: 2-28



WINTER DRESS TROUSERS

NP2100 Men's
(Fit Chart NP2100)

NP2104 Women's
NP2246 Women's
(Fit Chart LFC-09)

55% polyester / 45% wool

Green • Snug-Tex waistband (Men's) • Waistband has elastic inserts for more comfortable fit (Women's) • Reinforced front panel (Women's) • Two quarter front top pockets • Two back pockets with flaps • Men's Size Range: 28-48; Women's Size Range: 2-28



BRUSH PANTS

NP2005 Women's
(Fit Chart LFC-13)

NP2004 Men's
(Fit Chart NP2110)

100% cotton

Ranger Green • Double front panels for durability • Multiple utility pockets with hammer loop • Full seat and thigh • Straight leg • Pre-washed • Women's Size Range: 2-30; Men's Size Range: 28-48

TROUSERS

**FIELD MOBILITY PANT**

NP2249 Men's
(Fit Chart C02102)

NP2250 Women's
(Fit Chart LFC-09)

65% polyester / 35% cotton

Ranger Green • Regular fit • Cool Flex waistband with grippers, hook and eye closure • Flex panels with Mimix™ strategically placed to maximize mobility and improve comfort on the job • Men's Size Range: 28-54; Women's Size Range: 2-28

**JEANS**

NP2110 Men's
(Fit Chart NP2110)

NP2111 Women's
(Fit Chart NP2111)

50% polyester / 50% cotton

Green • Straight leg • Watch pocket • Relaxed fit • Conventional five pocket jeans • Men's Size Range: 28-54; Women's Size Range: 4-28

**UNISEX CONVERTIBLE TROUSERS**

NP2144 Unisex
(Fit Chart NP2144)

100% nylon

Green • Half fitted, half elastic waist • Zipper fly, snap closure and floating belt loops • Two side seam reservoir pockets • Two cargo pockets with gusset and hook and loop flap • Two back pockets with zipper closures • One pen pocket with two pen ports • Tapered down to the cuffs • Zip off legs convert pants into shorts • Size Range: S-2XL

**TACTICAL PANTS**

NP2253 Men's
(Fit Chart 1st-Tactical-Men's)

NP2254 Women's
(Fit Chart 1st-Tactical-Womens)

65% polyester / 35% cotton

OD Green • 6.4 oz. micro ripstop fabric • Proprietary ARMS fabric with 2-way mechanical stretch • Reinforced pocket flaps, gusset at the bottom of the pocket • Teflon Shield+ stain repellent finish • Men's Size Range: 28-54; Women's Size Range: 00-20



NATIONAL PARK SERVICE

VOLUNTEER



FLEECE JACKET

FS3016 Unisex

(Fit Chart FS3305)

100% nylon

Brown • Rib knit cuffs and waist • Zippered side hand pockets •
Size Range: XS-4XL



VOLUNTEER GORE-TEX OVERSHELL

FS3203 Unisex

(Fit Chart NP3206)

100% nylon

Brown • Hip length with inside adjustable draw cord • Inside knit collar for warmth and comfort • Two-way front zipper with snapped storm flap • Two outside zippered hand warmer pockets • Size Range: XS-4XL



NATIONAL
PARK
SERVICE

VOLUNTEER BROWN HOOD

NP7689 Unisex

(Fit Chart FS3116)

100% nylon

Brown • Hood is designed to snap on the under collar of the overshell • Size Range: M, XL, 3XL

LIFEGUARD

**LIFEGUARD WHISTLE AND LANYARD****NP7011** Unisex*100% plastic*

Red • Superior clear and loud blast carries over long distances • Reaches over 120 decibels in sound power • Size Range: One Size

**LIFEGUARD BROAD BRIM HAT****NP7014** Unisex

(Fit Chart NP7014)

100% polyester

Tan • Screen vents, snaps on both sides and chin cord • NPS logo on center front • Size Range: S-2XL

**LIFEGUARD BASEBALL CAP****NP7017** Unisex*98% nylon / 2% spandex*

Red • NPS logo on center front • Size Range: One Size

**SWIM SUIT****NP5130** Women's

(Fit Chart NP5130)

80% nylon / 20% lycra

Red • UVA and UVB 50+ protection • Durastitch for hundreds of durable hours • Long-lasting straps • NPS logo on center front • Size Range: 22-40

**SWIM TOP****NP5131** Women's

(Fit Chart NP5131)

100% polyester

Red • Soft and comfortable fit • Durable, resistant to shrinkage • Abrasion/pilling resistant • Quick drying • Chlorine resistant • UV Protection • NPS logo on center front • Size Range: XS-XL

**SWIM BOTTOMS****NP5132** Women's

(Fit Chart NP5132)

100% polyester

Red • Soft and comfortable fit • Durable, resistant to shrinkage • Abrasion/pilling resistant • Quick drying • Chlorine resistant • UV Protection • Size Range: XS-XL

**SWIM SUIT SPEEDO****NP5129** Men's

(Fit Chart NP5129)

80% nylon / 20% lycra

Red • Soft and comfortable fit • Durable, resistant to shrinkage • Abrasion/pilling resistant • Quick drying • Chlorine resistant • UV Protection • NPS logo • Size Range: 28-40

**BOARD SHORTS****NP5134** Women's

(Fit Chart NP5134)

100% nylon

Red • Soft and comfortable fit • Durable, resistant to shrinkage • Abrasion/pilling resistant • Quick drying • Chlorine resistant • UV Protection • NPS logo • Size Range: S-2XL

**BOARD SHORTS****NP5133** Men's

(Fit Chart NP5133)

80% nylon / 20% lycra

Red • 9 inseam length and easy elastic waist • Internal drawcord • Durable, resistant to shrinkage • Abrasion/pilling resistant • Quick drying • Chlorine resistant • UV Protection • NPS logo • Size Range: XS-4XL



NATIONAL PARK SERVICE

LIFEGUARD



S/S T-SHIRT

NP5121 Unisex
(Fit Chart NP5121)

100% cotton

Gray • 3/4 inch rib knit collar • Double-needle stitched sleeves and bottom hem • Taped neck and shoulders • NPS logo front and back • Size Range: S-3XL



L/S T-SHIRT

NP5123 Unisex
(Fit Chart NP5123)

50% polyester / 50% cotton

Gray • Advanced moisture management performance • Double-needle coverstitching on front neck • Rib knit cuffs • Double-needle hem • NPS logo front and back • Size Range: S-3XL



HOODED SWEATSHIRT

NP5125 Unisex
(Fit Chart NP5125)

90% cotton / 10% polyester

Gray • Contrast two-ply hood with matching drawstring • Contrast half-moon facing and woven tape at back of neck • Front pouch pocket • Ribbed spandex enhanced trim • NPS logo front and back • Size Range: S-3XL



LIFEGUARD SWEAT PANTS

NP5127 Unisex
(Fit Chart NP5127)

82% cotton / 18% polyester

Gray • Encased elastic cuffed leg hems • Low shrinkage • Side pockets • Self-fabric waistband with cotton draw cord • NPS logo • Size Range: S-3XL

LIFEGUARD

**LIFEGUARD RAINPANTS**

NP3221B Unisex
(Fit Chart NP3221B)

100% nylon

Black • Elastic waist in back • Take up snaps at waist • Slash side opening pockets • Self-fabric waistband with cotton draw cord • Take up tabs at cuffs • NPS emblem on left front • Size Range: S-6XL

**LIFEGUARD JACKET**

NP3223 Unisex
(Fit Chart NP3223)

100% nylon

Red • Wind resistant • Water resistant • Roll-away three-piece hood • Center front/lower zippered pockets • NPS logo left upper front • National Park Service Lifeguard on back • Size Range: S-4XL

**RAIN JACKET**

NP3216 Unisex
(Fit Chart NEESE)

100% nylon

Yellow • Leaf collar with detachable hood • Raglan sleeve design for ease of movement • Slash-thru opening with pockets on each side • Snap front closure with interlocking storm flap • Underarm vents • NPS logo front and back • Size Range: S-5XL



LAW ENFORCEMENT L.E.



BASE LAYER SHIRT

Long Sleeve

NP5007 Unisex
(Fit Chart MFC-83)

100% polyester

Ranger Gray • Moisture wicking fabric • Solarban technology provides UV protection • NPS arrowhead on left sleeve, LE Badge on left upper front • Size Range: XS-4XL

Short Sleeve

NP5008 Unisex
(Fit Chart MFC-83)



L/S LIGHTWEIGHT SHIRT

NP1024 Men's
(Fit Chart MFC-98)

Nylon Ripstop

NP1025 Women's
(Fit Chart LFC-10)

Ranger Gray • UV protection • Roll-up sleeves • Side gusset • Vented back and shoulders for breathability • Wicking finish, quick dry • NPS shoulder emblem, LE Badge on left chest • Men's Size Range: XS-7XL; Women's Size Range: XS-5XL

SEARCH AND RESCUE (SAR)



L/S SAR T-SHIRT

NP5010 Unisex
(Fit Chart NP5010)

100% polyester

Yellow • Moisture wicking fabric • UV protection performance • NPS SAR on left upper front, NPS arrowhead on left sleeve, Search & Rescue on right sleeve, SEARCH AND RESCUE on center back • Size Range: XS-4XL



S/S SAR T-SHIRT

NP5011 Unisex
(Fit Chart NP5011)

100% polyester

Yellow • Moisture wicking fabric • UV protection performance • NPS SAR on left upper front, NPS arrowhead on left sleeve, Search & Rescue on right sleeve, SEARCH AND RESCUE on center back • Size Range: XS-4XL

SHIRTS

**S/S NEW DIMENSION PLUS SERVICE DRESS SHIRT**

NP1013 Men's
(Fit Chart MFC-04)

NP1014 Women's
(Fit Chart LFC-10)

65% polyester / 35% cotton

Ranger Gray • Hook and loop pocket flaps • Badgetab eyelets inside left upper front • Banded collar • Shoulder epaulets • Pen compartment • Military creases • NPS shoulder emblem • Men's Size Range: 14.5-20.5; Women's Size Range: 28-50

**L/S NEW DIMENSION PLUS SERVICE DRESS SHIRT**

NP1011 Men's
(Fit Chart MFC-04)

NP1012 Women's
(Fit Chart LFC-10)

65% polyester / 35% cotton

Ranger Gray • Hook and loop pocket flaps • Badgetab eyelets inside left upper front • Banded collar • Shoulder epaulets • Pen compartment • Military creases • NPS shoulder emblem • Men's Size Range: 14-20; Women's Size Range: 28-50

**S/S 100% COTTON SERVICE DRESS SHIRT**

NP1218 Men's
(Fit Chart MFC-55)

NP1223 Women's
(Fit Chart LFC-10)

100% cotton

Gray • Badge tab eyelets left upper front • Convertible collar • Hook and loop pocket flaps • Shoulder epaulets • Pen compartment • Military creases • NPS shoulder emblem • Men's Size Range: S-4XL; Women's Size Range: 28-50

**L/S 100% COTTON SERVICE DRESS SHIRT**

NP1212B Men's
(Fit Chart NP1112)

NP1215B Women's
(Fit Chart NP1115)

100% cotton

Gray • Hook and loop pocket flaps • Badgetab eyelets inside left upper front • Banded collar • Shoulder epaulets • Pen compartment • Military creases • NPS shoulder emblem • Men's Size Range: 14-20; Women's Size Range: 28-50



SHIRTS



L/S TURTLENECK

NP5120 Unisex
(Fit Chart MFC-01)

63% nylon / 23% polyester / 14% spandex

Black • 4-Way stretch comfort • Moisture transport system •
Odor free system • Temperature regulation • Size Range: S-5XL



S/S MIMIX MOBILITY FIELD SHIRT

NP1009 Men's
(Fit Chart MFC-46)

NP1010 Women's
(Fit Chart LFC-10)

Body 65% polyester / 35% cotton, Panels 100% polyester

Ranger Gray • Pre-cure durable press wrinkle-resistant finish
• Superior color retention • Soil release • Wickability • Metal
nameplate (not included) • NPS shoulder emblem • Men's Size
Range: XS-6XL; Women's Size Range: S-4XL



L/S MIMIX MOBILITY FIELD SHIRT

NP1015 Men's
(Fit Chart MFC-55)

NP1016 Women's
(Fit Chart LFC-10)

Body 65% polyester / 35% cotton, Panels 100% polyester

Ranger Gray • Badge tab and eyelets left upper front • Pre-cure
durable press wrinkle-resistant finish • Superior color retention
• Soil release • Wickability • Metal nameplate (not included) •
NPS shoulder emblem • Men's Size Range: XS-6XL; Women's
Size Range: S-4XL



S/S T-SHIRT

NP5001 Unisex
(Fit Chart NP5001)

100% cotton

Gray • NPS arrowhead on left upper front, 3 inch high NPS logo
on center back • Size Range: S-3XL

SHIRTS

**S/S MIMIX MOBILITY WORK SHIRT**

NP1007 Men's
(Fit Chart MFC-46)

NP1008 Women's
(Fit Chart LFC-06)

Body 65% polyester / 35% cotton, Panels 100% polyester

Ranger Gray • Pre-cure durable press wrinkle-resistant finish
• Superior color retention • Soil release • Wickability • Cloth
name tag (included) • NPS shoulder emblem • Men's Size
Range: XS-6XL; Women's Size Range: S-4XL

**L/S MIMIX MOBILITY WORK SHIRT**

NP1005 Men's
(Fit Chart MFC-05)

NP1006 Women's
(Fit Chart LFC-06)

Body 65% polyester / 35% cotton, Panels 100% polyester

Ranger Gray • Pre-cure durable press wrinkle-resistant finish
• Superior color retention • Soil release • Wickability • Cloth
name tag (included) • NPS shoulder emblem • Men's Size
Range: XS-6XL; Women's Size Range: S-4XL

**100% COTTON S/S WORK SHIRT**

NP1304 Men's
(Fit Chart MFC-05)

NP1307 Women's
(Fit Chart LFC-06)

100% cotton

Gray • Military creases • Convertible collar • Pen compartment
• Hook and loop pocket flaps • NPS shoulder emblem,
embroidered name tag • Men's Size Range: S-4XL; Women's
Size Range: 30-44

**100% COTTON L/S WORK SHIRT**

NP1300 Men's
(Fit Chart NP1112)

NP1303 Women's
(Fit Chart LFC-06)

100% cotton

Gray • Banded collar • Hook and loop pocket flaps • Military
creases • Pen compartment • NPS shoulder emblem,
embroidered name tag • Men's Size Range: 14.5-20; Women's
Size Range: 30-42



SHIRTS



L/S LIGHTWEIGHT SHIRT

NP1020 Men's
(Fit Chart MFC-98)

NP1021 Women's
(Fit Chart LFC-10)

Nylon Ripstop

Ranger Gray • UV protection • Roll-up sleeves • Side gusset • Vented back and shoulders for breathability • Wicking finish, quick dry • NPS shoulder emblem, nametag on right upper front • Men's Size Range: XS-7XL; Women's Size Range: XS-5XL



L/S LIGHTWEIGHT SHIRT

NP1022 Men's
(Fit Chart MFC-98)

NP1023 Women's
(Fit Chart LFC-10)

Nylon Ripstop

Ranger Gray • UV protection • Roll-up sleeves • Side gusset • Vented back and shoulders for breathability • Wicking finish, quick dry • NPS shoulder emblem, Ranger Badge on left chest • Men's Size Range: XS-7XL; Women's Size Range: XS-5XL

NATIONAL
PARK
SERVICE

SHOES, BOOTS AND SHOE STRINGS

**WALKERS****NP6000** Men's**NP6001** Women's*100% leather*

Brown • Polish-able • Light Weight Composite Toe. Will not conduct heat, cold or electricity • Foot Force Insole is soft and removable. It cushions and cradles your foot • Shock absorbing polyurethane ball and heel pads • Moisture absorbing fabric covering with a TPU Stabilizer • Heel airbag • Static dissipative • Mens sizes may be substituted for the womens shoe size when needed • Men's Size Range: 6-14; Women's Size Range: 6-12

**MOUNTAIN LIGHT BOOTS****NP6242** Men's**NP6243** Women's*100% leather*

Brown • Waterproof and breathable Gore-Tex liner • Shock absorbing polyurethane ball and heel pads. • Vibram Kletterlift outsole designed for comfort and durability • Heel provides lightweight comfort as well as superb shock absorption • Fiberglass shank • Mens 62 oz; Womens 54 oz • Great traction and stability on wet and dry surfaces • Men's Size Range: 7-14; Women's Size Range: 6-11

**UNISEX JUNGLE HIKER****FS6000** Unisex*100% leather*

Dark brown • Waterproof • Air-Port cushion footbed • Reduce injuries with Roll-Stop Ankle Stability • Vibram sole • Maintains breathability • 5 inches in height • Please note: half sizes will be indicated by dash mark. Example: 8 1/2 Medium will be indicated by 8-M • Size Range: 3-14

**HELIX 6 INCH BOOTS****T85594** Unisex*100% leather*

Brown • Waterproof protection • Alloy safety toe, slip resistant • Breathable mesh lining with Agion microbial treatment • Anti-fatigue technology • Nylon diffusion shank • Weight: 1 lb 15 oz • Please note: half sizes will be indicated by dash mark. Example: 8 1/2 Medium will be indicated by 8-M • Size Range: 5-15

**DRESS SHOE****NP7686** Men's**NP6131** Women's*100% leather*

Brown • Premium leather • Light weight and durable • Please note: half sizes will be indicated by dash mark. Example: 8 1/2 Medium will be indicated by 8-M • Men's Size Range: 7-12; Women's Size Range: 5-11

**REPLACEMENT SHOE STRINGS****NP6132** Men's**NP6133** Women's*100% leather*

Brown • Waxed laces • Men's: 30 inches long; Women's: 24 inches long • Size Range: One Size

**LOW PUMP****NP7687** Women's*100% leather*

Brown • Comfortable non-removable innersole • Slip resistant • Non-marking sole • Please note: half sizes will be indicated by dash mark. Example: 8 1/2 Medium will be indicated by 8-M • Size Range: 5-11



FIT CHARTS BELTS

UNISEX

NP7007

NP7007 Heavy Duty Embossed Belt	
Size:	24 - 56
Measurements are in inches	

NP7008

NP7008 Embossed Belt	
Size:	24 - 60
Measurements are in inches	

FIT CHARTS DRESS COATS AND JACKETS

MEN'S

MFC-02

	If Your Chest Measures	Order This Size
XS	31½" - 33"	32
	33½" - 35"	34
S	35½" - 37"	36
	37½" - 39"	38
M	39½" - 41"	40
	41½" - 43"	42
L	43½" - 45"	44
	45½" - 47"	46
XL	47½" - 49"	48
	49½" - 51"	50
XXL	51½" - 53"	52
	53½" - 55"	54
Short: Height is less than 5'7"		
Regular: Height is 5'7" - 5'10½"		
Long: Height is 5'11" - 6'3"		
XLong: Height is over 6'3"		
NOTE: This fit chart is used for multiple products. Some sizes may not be available for all products. Please refer to the Product Detail section to see available sizes for the product you are considering. If the size you need is not available to choose, please contact customer support for assistance.		

WOMEN'S

LFC-13

Alpha	Numeric	Bust		Waist		Hip	
XS	2	31½	32	25	25½	35	35½
	4	32½	33	26	26½	36	36½
S	6	33½	34	27	27½	37	37½
	8	34½	35	28	28½	38	38½
M	10	35½	36	29	29½	39	39½
	12	36½	37½	30	31	40	41
L	14	38	39	31½	32½	41½	42½
	16	39½	40½	33	34	43	44
XL	18	41½	42½	34½	36	44½	46
	20	43½	44½	36½	38	46½	48
XXL	22	45½	46½	38½	40	48½	50
	24	47½	48½	40½	42	50½	52
3XL	26	49½	50½	42½	44	52½	54
	28	51½	52½	44½	46	54½	56
4XL	30	53½	54½	46½	48	56½	58
	32	55½	56½	48½	50	58½	60
Petite: 4' 11" - 5' 3"							
Regular: 5' 3½" - 5' 7"							
Tall: 5' 7½" - 5' 11"							
NOTE: This fit chart is used for multiple products. Some sizes may not be available for all products. Please refer to the Product Detail section to see available sizes for the product you are considering. If the size you need is not available to choose, please contact customer support for assistance.							

LFC-14

Alpha Size	Chest Maximum
2	33
4	34
6	35
8	36
10	37
12	38½
14	40
16	41½
18	43½
20	45½
22	47½
24	49½
NOTE: This fit chart is used for multiple products. Some sizes may not be available for all products. Please refer to the Product Detail section to see available sizes for the product you are considering. If the size you need is not available to choose, please contact customer support for assistance.	

FIT CHARTS GLOVES

UNISEX

NP7012

GLOVE SIZE	Inches
XS	6-6.75
SM	7-7.75
MD	8-8.75
LG	9-9.75
XL	10-10.75
XXL	11-11.75

NP7013

	XS	S	M	L	XL	XXL
Circumference of the Hand in inches	6½ - 7¼	7¼ - 7¾	7¾ - 8¼	8¼ - 9	9 - 9¾	9¾ - 10¼
Circumference of the Hand in cm	18	19	20	22	24	25

FIT CHARTS HEADWEAR

UNISEX

C07202

C07202/7202 Hat Trap	
ONE SIZE FITS ALL	

NP7000

NP7000 Unisex GN Winter Hat				
Size	S	M	L	XL
Hat Size	6 7/8	7 1/4	7 1/2	7 5/8
Head Measurement	21 3/8	22 1/4--1/2	22 1/2-23 3/4	23 3/4-24 1/2
Head Measurements in Inches				

NP7009

NP7009 Hat Band															
Size	6 3/8	6 1/2	6 5/8	6 3/4	6 7/8	7	7 1/8	7 1/4	7 3/8	7 1/2	7 5/8	7 3/4	7 7/8	8	8 1/4

NP7020

NP7020 - Adult Hat Size		
	Size - Inches	Head Circumference - Inches
RG	7 1/4 - 7 3/8	22 3/4 - 23 1/8
XL	7 1/2 - 7 5/8	23 1/2 - 23 7/8
XXL	7 3/4 - 7 7/8	24 1/4

NP7103

NP7103															
HAT SIZE	6 1/2	6 5/8	6 3/4	6 7/8	7	7 1/8	7 1/4	7 3/8	7 1/2	7 5/8	7 3/4	7 7/8			
HEAD MEASUREMENT (Inches)	20 1/4	20 3/4	21 1/8	21 1/2	21 7/8	22 1/4	22 5/8	23	23 1/2	23 7/8	24 1/4	24 5/8			

You can determine you head shape by measuring your head. Starting at 1" above the eyebrow measure from front to back then measure from 1½" above where the ear meets the head from side to side.

- If the measurement from front to back equals 1 3/8" or less than the measurement from side to side it would indicate a Wide Oval
- If the measurement from front to back equals 1 3/8" to 1 5/8" longer than wide it would indicate a Regular Oval
- If the measurement equals 1 3/8" to 1 7/8" longer than wide it would indicate a Long Oval (this is the most common head shape)
- If the measurement equals 1 7/8" to 2 1/8" longer than wide it would indicate an Extra Long Oval

NP7113

NP7113 Unisex GN Fur Trooper Hat							
Size	S	M	L	XL	2XL	3XL	4XL
Hat Size	6 7/8	7 1/4	7 1/2	7 5/8	7 3/4	7 7/8	8
Head Measurement	21 3/8	22 1/4-22 1/2	22 1/2-23 3/4	23 3/4-24 1/2	24 3/4-25 1/2	25 1/2-26 3/4	26 3/4-27 1/2
Head Measurements in Inches							

FS7101

FS7101 Hat Size Conversion													
	X-SMALL			SMALL		MEDIUM		LARGE		X-LARGE		2XL	3XL
Hat Size	6 3/8	6 1/2	6 5/8	6 3/4	6 7/8	7	7 1/8	7 1/4	7 3/8	7 1/2	7 5/8	7 3/4	7 7/8
Inches	20 1/4	20 5/8	21	21 1/2	21 7/8	22 1/4	22 5/8	23	23 3/8	23 3/4	24	24 1/2	25 1/2
Metric	51	52	53	54	55	56	57	58	59	60	61	62	63

NP7002

Size Scale	S	M	L	XL	2XL	3XL
Hat Size	6 3/4 - 6 7/8	7 - 7 1/8	7 1/4 - 7 3/8	7 12 - 7 3/4	7 7/8 - 8	8 1/8 - 8 1/4
Head Measurement	21 1/2	22 1/4	23	23 7/8	24 5/8	25 3/8

NP7019

NP7019 - Flex Sizing	
Size	CM
M/L (Reg)	58 - 60
XL	60 - 62
XXL	62 - 64

NP7102

NP7102/245 Twill/Mesh Ball Cap			
Size	R	XL	2XL
Hat Size	7 3/8	7 3/4	8

NP7104

NP7104															
HAT SIZE	6 1/2	6 5/8	6 3/4	6 7/8	7	7 1/8	7 1/4	7 3/8	7 1/2	7 5/8	7 3/4	7 7/8			
HEAD MEASUREMENT (Inches)	20 1/4	20 3/4	21 1/8	21 1/2	21 7/8	22 1/4	22 5/8	23	23 1/2	23 7/8	24 1/4	24 5/8			

You can determine you head shape by measuring your head. Starting at 1" above the eyebrow measure from front to back then measure from 1½" above where the ear meets the head from side to side.

- If the measurement from front to back equals 1 3/8" or less than the measurement from side to side it would indicate a Wide Oval
- If the measurement from front to back equals 1 3/8" to 1 5/8" longer than wide it would indicate a Regular Oval
- If the measurement equals 1 3/8" to 1 7/8" longer than wide it would indicate a Long Oval (this is the most common head shape)
- If the measurement equals 1 7/8" to 2 1/8" longer than wide it would indicate an Extra Long Oval

NP7191

	HAT SIZE		HEAD CIRCUMFERENCE	
	MINIMUM	MAXIMUM	MINIMUM	MAXIMUM
S	7	7 3/8	22	23
M	7 3/8	7 5/8	23	24
L	7 5/8	8	24	25
Head circumference in inches				



FIT CHARTS LINERS AND HOODS

UNISEX

MFC-40

ALPHA SIZE	CHEST MAXIMUM
XS	33½
S	37½
M	41½
L	45½
XL	49½
XXL	53½
3XL	57½
4XL	61½
5XL	65½
NOTE: If waist size is larger than chest size, use waist measurement as size.	
NOTE: This fit chart is used for multiple products. Some sizes may not be available for all products. Please refer to the Product Detail section to see available sizes for the product you are considering. If the size you need is not available to choose, please contact customer support for assistance.	

NP3130

NP3130/50400 Unisex Uninsulated Hood				
Size	XS	S/M	L/XL	2XL/3XL
Neck	22	24	26	28

FIT CHARTS MATERNITY

WOMEN'S

LFC-02

	Size	Bust	Waist	Hip
XS	2	33 - 34	26 - 27	35½ - 36½
	4	34 - 35	27 - 28	36½ - 37½
S	6	35 - 36	28 - 29	37½ - 38½
	8	36 - 37	29 - 30	38½ - 39½
M	10	37 - 38	30 - 31	39½ - 40½
	12	38 - 39½	31 - 32½	40½ - 42
L	14	39½ - 41	32½ - 34	42 - 43½
	16	41 - 42½	34 - 35½	43½ - 45
XL	18	42½ - 44½	35½ - 37½	45 - 47
	20	44½ - 46½	37½ - 39½	47 - 49
XXL	22	46½ - 48½	39½ - 41½	49 - 51
	24	48½ - 50½	41½ - 43½	51 - 53
3XL	26	50½ - 52½	43½ - 45½	53 - 55
	28	52½ - 54½	45½ - 47½	55 - 57
4XL	30	54½ - 56½	47½ - 49½	57 - 59
	32	56½ - 58½	49½ - 51½	59 - 61
Petite: 4' 11" - 5' 3"				
Regular: 5' 3½" - 5' 7"				
Tall: 5' 7½" - 5' 11"				
NOTE: This fit chart is used for multiple products. Some sizes may not be available for all products. Please refer to the Product Detail section to see available sizes for the product you are considering. If the size you need is not available to choose, please contact customer support for assistance.				

LFC-09

PANT SIZE	WAIST RANGE		SEAT RANGE	
0	23	26	34¾	35¾
2	24	27	35¾	36¾
4	25	28	36¾	37¾
6	26	29	37¾	38¾
8	27	30	38¾	39¾
10	28	31	39¾	40¾
12	29½	32½	40¾	42¼
14	31	34	42¼	43¾
16	32½	35½	43	45¼
18	34½	37½	45¼	47¼
20	36½	39½	47¼	49¼
22	38½	41½	49¼	51¼
24	40½	43½	51¼	53¼
26	42½	45½	53¼	55¼
28	44½	47½	55¼	57¼
30	46½	49½	57¼	59¼
32	48½	51½	59¼	61¼
34	50½	53½	61¼	63¼
36	52½	55½	63¼	65¼
38	54½	57½	65¼	67¼
Petite: 4' 11" - 5' 3"				
Regular: 5' 3½" - 5' 7"				
Tall: 5' 7½" - 5' 11"				
NOTE: This fit chart is used for multiple products. Some sizes may not be available for all products. Please refer to the Product Detail section to see available sizes for the product you are considering. If the size you need is not available to choose, please contact customer support for assistance.				

FIT CHARTS OUTERWEAR / COVERALLS

UNISEX

MFC-12

Alpha Size	Chest Size	Chest Max.
XS	32	32"
	34	34"
S	36	36"
	38	38"
M	40	40"
	42	42"
L	44	44"
	46	46"
XL	48	48"
	50	50"
XXL	52	52"
	54	54"
3XL	56	56"
	58	58"
4XL	60	60"
	62	62"
5XL	64	64"
	66	66"
6XL	68	68"
	70	70"
7XL	72	72"
	74	74"
8XL	76	76"
	78	78"

NOTE: If waist size is larger than chest size, use waist measurement as size.

NOTE: This fit chart is used for multiple products. Some sizes may not be available for all products. Please refer to the Product Detail section to see available sizes for the product you are considering. If the size you need is not available to choose, please contact customer support for assistance.

MFC-17

Alpha Size	Chest Max.
XS	34
S	36
M	40
L	44
XL	48
XXL	50
3XL	52
4XL	54
5XL	56

NOTE: If Waist size is larger than chest size, use waist measurement as size.

NOTE: This fit chart is used for multiple products. Some sizes may not be available for all products. Please refer to the Product Detail section to see available sizes for the product you are considering. If the size you need is not available to choose, please contact customer support for assistance.

MFC-24

Alpha Size	Numeric Size	Chest Size	Waist Max.
XS	32	30½ -32	30½
	34	32½-34	32½
S	36	34½-36	34½
	38	36½-38	36½
M	40	38½-40	38½
	42	40½-42	40½
L	44	42½-44	42½
	46	44½-46	44½
XL	48	46½-48	46½
	50	48½-50	48½
XXL	52	50½-52	50½
	54	52½-54	52½
3XL	56	54½-56	54½
	58	56½-58	56½
4XL	60	58½-60	58½
	62	60½-62	60½
5XL	64	62½-64	62½
	66	64½-66	64½

Short: Height is 5'3" - 5'7"

Regular: Height is 5'7" - 5'11"

Long: Height is 5'11" - 6'3"

XLong: Height is 6'3" - 6'7"

NOTE: This fit chart is used for multiple products. Some sizes may not be available for all products. Please refer to the Product Detail section to see available sizes for the product you are considering. If the size you need is not available to choose, please contact customer support for assistance.

MFC-26

Alpha Size	Numeric Size	Chest Size	Waist Max.
XS	30	28½ -30	28½
	32	30½-32	30½
S	34	32½-34	32½
	36	34½-36	34½
M	38	36½-38	36½
	40	38½-40	38½
L	42	40½-42	40½
	44	42½-44	42½
XL	46	44½-46	44½
	48	46½-48	46½
XXL	50	48½-50	48½
	52	50½-52	50½
3XL	54	52½-54	52½
	56	54½-56	54½
4XL	58	56½-58	56½
	60	58½-60	58½
5XL	62	60½-62	60½
	64	62½-64	62½

Short: Height is 5'3" - 5'7"

Regular: Height is 5'7" - 5'11"

Long: Height is 5'11" - 6'3"

XLong: Height is 6'3" - 6'7"

NOTE: This fit chart is used for multiple products. Some sizes may not be available for all products. Please refer to the Product Detail section to see available sizes for the product you are considering. If the size you need is not available to choose, please contact customer support for assistance.



FIT CHARTS OUTERWEAR / COVERALLS

UNISEX (continued)

MFC-36

SIZE	CHEST MEASUREMENT	WAIST MEASUREMENT MAXIMUM	OVER ARM MEASUREMENT MAXIMUM
37	37-38	32	45
38	38-39	34	46
39	39-40	36	47
40	40-41	38	48
41	41-42	40	49
42	42-43	42	50
43	43-44	44	51
44	44-45	46	52
46	45-47	48	53
48	47-49	50	54
50	49-51	52	55
52	51-53	54	56
54	53-55	56	57

Short: 5'3" - 5'7"

Regular: 5'7" - 5'11"

Long: 5'11" - 6'3"

XLong: 6'3" - 6'7"

NOTE: This fit chart is used for multiple products. Some sizes may not be available for all products. Please refer to the Product Detail section to see available sizes for the product you are considering. If the size you need is not available to choose, please contact customer support for assistance.

MFC-69

Size	RG RG	RG XL
Calf Circumference	Up to 15"	15.5"

NP3118

NP3118/50100 Men's Rain Wind Pant					
Size	S	M	L	XL	2XL
Regular Waist	27	31	35	39	43
Stretch Waist	37	41	45	49	53
Regular Inseam	29	30	31	32	33
Regular	*	*	*	*	*
Long	*	*	*	*	*

Long- add 1/2" to the front rise and 2" to the inseam

MFC-40

ALPHA SIZE	CHEST MAXIMUM
XS	33½
S	37½
M	41½
L	45½
XL	49½
XXL	53½
3XL	57½
4XL	61½
5XL	65½

NOTE: If waist size is larger than chest size, use waist measurement as size.

NOTE: This fit chart is used for multiple products. Some sizes may not be available for all products. Please refer to the Product Detail section to see available sizes for the product you are considering. If the size you need is not available to choose, please contact customer support for assistance.

MFC-73

Alpha Size	Chest Maximum
XS	36
S	38
M	42
L	46
XL	50
XXL	54
3XL	56
4XL	58
5XL	60
6XL	62

NOTE: If waist size is larger than chest size, use waist measurement as size.

Short 5'3" - 5'7"

Regular 5'7" - 5'11"

Long 5'11" - 6'3"

XLong 6'3" - 6'7"

NP3152

NP3152/3152 Unisex Unlined Coverall								
Size	XS	S	M	L	XL	2XL	3XL	4XL
Chest	41 1/2	44 1/2	49 1/2	53 1/2	57 1/2	61 1/2	65 1/2	69 1/2
Regular Sleeve Length	33	33 1/2	34	34 1/2	35	35 1/2	36	36 1/2
Short	*	*	*	*	*	*	*	*
Regular	*	*	*	*	*	*	*	*
Long	*	*	*	*	*	*	*	*

FIT CHARTS OUTERWEAR / COVERALLS

UNISEX (continued)

NP3190

NP3190/ 3190 Unisex Bib Overall								
Size	XS	S	M	L	XL	2XL	3XL	4XL
Chest	34	38	42	46	50	54	58	62
Length								
Short		*	*	*				
Regular (30" inseam)	*	*	*	*	*	*	*	*
Long		*	*	*	*	*		
X-Long			*	*				
Short- minus 2" in trunk, 3" in inseam, 1" from center front zipper								
Long- add 4" in trunk, 2" in inseam, 2" to center front zipper								
X-long-add 6" in trunk, 5" in inseam, 4" to center front zipper								

NP3200

NP3200/3200 Unisex Raincoat								
Size	XS	S	M	L	XL	3XL	4XL	
Chest	30-32	34-36	38-40	42-44	46-48	50-52	54-56	58-60
Length								
Regular		*	*	*	*	*	*	*

FIT CHARTS SHORTS

MEN'S

MFC-76

Shorts Size	Waist Measurement (in)
28	27-28
30	29-30
32	31-32
34	33-34
36	35-36
38	37-38
40	39-40
42	41-42
44	43-44
46	45-46
48	47-48
50	49-50
52	51-52
54	53-54
56	55-56
58	57-58
60	59-60

WOMEN'S

LFC-13

Alpha	Numeric	Bust		Waist		Hip	
XS	2	31½	32	25	25½	35	35½
	4	32½	33	26	26½	36	36½
S	6	33½	34	27	27½	37	37½
	8	34½	35	28	28½	38	38½
M	10	35½	36	29	29½	39	39½
	12	36½	37½	30	31	40	41
L	14	38	39	31½	32½	41½	42½
	16	39½	40½	33	34	43	44
XL	18	41½	42½	34½	36	44½	46
	20	43½	44½	36½	38	46½	48
XXL	22	45½	46½	38½	40	48½	50
	24	47½	48½	40½	42	50½	52
3XL	26	49½	50½	42½	44	52½	54
	28	51½	52½	44½	46	54½	56
4XL	30	53½	54½	46½	48	56½	58
	32	55½	56½	48½	50	58½	60
Petite: 4' 11" - 5' 3"							
Regular: 5' 3½" - 5' 7"							
Tall: 5' 7½" - 5' 11"							
NOTE: This fit chart is used for multiple products. Some sizes may not be available for all products. Please refer to the Product Detail section to see available sizes for the product you are considering. If the size you need is not available to choose, please contact customer support for assistance.							

UNISEX

NP2001

Unisex Elastic Waist Shorts									
Size	X-SM	SM	MED	LRG	X-LRG	2X-LRG	3X-LRG	4X-LRG	5X-LRG
Men's	26-27	28-30	31-33	33-35	36-37	38-41	42-44	45-46	48-50
Women's	23-24	25-26	27-28	29-30	31-32	33-34	35-36	37-38	39-40



FIT CHARTS SKIRT

WOMEN'S

LFC-09

PANT SIZE	WAIST RANGE		SEAT RANGE	
0	23	26	34¾	35¾
2	24	27	35¾	36¾
4	25	28	36¾	37¾
6	26	29	37¾	38¾
8	27	30	38¾	39¾
10	28	31	39¾	40¾
12	29½	32½	40¾	42¼
14	31	34	42¼	43¾
16	32½	35½	43	45¼
18	34½	37½	45¼	47¼
20	36½	39½	47¼	49¼
22	38½	41½	49¼	51¼
24	40½	43½	51¼	53¼
26	42½	45½	53¼	55¼
28	44½	47½	55¼	57¼
30	46½	49½	57¼	59¼
32	48½	51½	59¼	61¼
34	50½	53½	61¼	63¼
36	52½	55½	63¼	65¼
38	54½	57½	65¼	67¼
Petite: 4' 11" - 5' 3"				
Regular: 5' 3½" - 5' 7"				
Tall: 5' 7½" - 5' 11"				
NOTE: This fit chart is used for multiple products. Some sizes may not be available for all products. Please refer to the Product Detail section to see available sizes for the product you are considering. If the size you need is not available to choose, please contact customer support for assistance.				

FIT CHARTS SOCKS

UNISEX

NP7018

Size	S	M	L	XL
Mens Shoe Size	3-5.5	6-8.5	9-11.5	12-14.5

NP7126

NP7126/1550 Unisex Hiking Sock			
Size	M	L	XL
Men's Shoe	4.5 - 8	8.5 - 12.5	13 - 15
Women's Shoe	5.5 - 10.5	11 - 12	13 - 15

NP7167

NP7167		
Shoe Size		
Sock Size	Mens	Womens
S	6 1/2 - 8 1/2	8 1/2 - 10 1/2
M	9 - 10 1/2	11 - 12 1/2
L	11 - 12 1/2	13 - 14 1/2
XL	13 - 15	.

FIT CHARTS SWEATERS

UNISEX

MFC-84

Alpha Size	XS	S	M	L	XL	XXL	3XL	4XL	5XL	6XL	7XL	8XL
Chest	33 1/2-35	35 1/2-37	37 1/2-40	40 1/2-43	43 1/2-46	46 1/2-50	50 1/2-54	54 1/2-58	58 1/2-62	62 1/2-66	66 1/2-70	70 1/2-74

MFC-89

SIZE	XS	S	M	L	XL	2XL	3XL	4XL	5XL
Chest	34-36	36-38	38.5-40.5	41-43	43-46.5	47-49.5	50.5-52.5	53-55.5	56-58.5

FIT CHARTS TROUSERS

MEN'S

1ST TACTICAL MENS

Size	Numeric Size	Chest	Waist	Neck	Arm Length
XS	24-26	31 1/2 - 32 1/2	24 - 25	13-13 1/2	29 1/2 - 29 3/4
S	28-30	33 1/2 - 34 1/2	26 - 27	14-14 1/2	30 1/4 - 30 1/2
M	32-34	35 1/2 - 36 1/2	28 - 29	15-15 1/2	31 - 31 1/4
L	36-38	38 - 39 1/2	30 1/2 - 32	16-16 1/2	31 3/4 - 32
XL	40-42	41 - 43	33 1/2 - 35 1/2	17-17 1/2	32 1/2 - 32 3/4
XXL	44-46	45 - 47	38 - 40	18-18 1/2	33 1/4 - 33 1/2
3XL	48-50	54-56	48-50	19-19 1/2	36 3/4 - 37 1/4
4XL	52-54	58-60	52-54	20-20 1/2	37 1/2 - 38
5XL	56-58	62-64	56-58	21-22	38 - 39
Tall sizes have 2" added to body and sleeve length					
Arm length refers to actual arm length and not the garment's					

CO2102

CO2102/10540 Men's Twill Trousers																											
Size	28	29	30	31	32	33	34	35	36	37	38	40	42	44	46	48	50	52	54	56	58						
Waist	29	30	31	32	33	34	35	36	37	38	39	41	43	45	47	49	51	53	55	57	59						
Length																											
Short					*	*	*	*	*	*	*	*	*	*	*	*	*	*	*	*	*						
RG	*	*	*	*	*	*	*	*	*	*	*	*	*	*	*	*	*	*	*	*	*						
Long					*	*	*	*	*	*	*	*	*	*	*	*	*	*	*	*	*						
X-Long			*	*	*	*	*	*	*	*	*	*	*	*	*	*	*	*	*	*	*						

MFC-103

Size	24	25	26	27	28	29	30	31	32	33	34	35	36	37	38	39	40	42	44	46	48	50	52	54	56	58	60
Waist Max	25	26	27	28	29	30	31	32	33	34	35	36	37	38	39	40	41	43	45	47	49	51	53	55	57	60	61
Seat Max	36	36	37	38	39	40	41	42	43	44	45	46	47	48	49	50	51	52 1/2	54	55 1/2	57	59	60 1/2	62	64	66 1/2	67

NP2100

NP2100/10537 Men's Elastic Trousers																											
Size	28	29	30	31	32	33	34	35	36	37	38	40	42	44	46	48	50	52	54								
Waist	29	30	31	32	33	34	35	36	37	38	39	41	43	45	47	49	51	53	55								
Length																											
Short (minus 1/2" in front rise)	*		*		*		*		*		*	*															
Regular	*	*	*	*	*	*	*	*	*	*	*	*	*	*	*	*	*	*	*	*	*	*	*	*	*	*	*
Long (add 1/2" to front rise)					*		*		*		*	*	*	*	*	*	*	*	*	*							

NP2101

NP2101/10536 Men's Tropical Trousers																											
Size	28	29	30	31	32	33	34	35	36	37	38	40	42	44	46	48	50	52	54	56							
Waist	29	30	31	32	33	34	35	36	37	38	39	41	43	45	47	49	51	53	55	57							
Length																											
Short (minus 1/2" in front rise)	*		*		*		*		*		*	*															
Regular	*	*	*	*	*	*	*	*	*	*	*	*	*	*	*	*	*	*	*	*	*	*	*	*	*	*	*
Long (add 1/2" to front rise)					*		*		*		*	*	*	*	*	*	*	*	*	*							
X-Long (add 1" to front rise)					*		*		*		*	*	*	*	*	*	*	*	*	*							

NP2110

NP2110/10640 Men's Jean																											
Size	28	29	30	31	32	33	34	35	36	37	38	40	42	44	46	48	50	52	54	56	58	60					
Waist	28	29	30	31	32	33	34	35	36	37	38	40	42	44	46	48	50	52	54	56	58	60					
Length																											
Regular	*	*	*	*	*	*	*	*	*	*	*	*	*	*	*	*	*	*	*	*	*	*	*	*	*	*	*
Long			*		*	*	*	*	*	*	*	*	*	*	*	*	*	*	*	*	*	*	*	*	*	*	*
X-Long			*		*	*	*	*	*	*	*	*	*	*	*	*	*	*	*	*	*	*	*	*	*	*	*

{Jeans are relaxed fit. Order same size you would normally order in relaxed fit trousers. When ordering inseam, add 1" to normal length to accommodate for shrinkage.}



FIT CHARTS TROUSERS

WOMEN'S

1ST TACTICAL WOMENS

Size	Numeric Size	Chest	Waist	Hip	Arm Length
XS	0 - 2	31 1/2 - 32 1/2	24 - 25	34 1/2 - 35 1/2	29 1/2 - 29 3/4
S	4-6	33 1/2 - 34 1/2	26 - 27	36 1/2 - 37 1/2	30 1/4 - 30 1/2
M	8-10	35 1/2 - 36 1/2	28 - 29	38 1/2 - 39 1/2	31 - 31 1/4
L	12-14	38 - 39 1/2	30 1/2 - 32	41 - 42 1/2	31 3/4 - 32
XL	16-18	41 - 43	33 1/2 - 35 1/2	44 - 46	32 1/2 - 32 3/4
XXL	20 - 22	45 - 47	38 - 40	48 - 50	33 1/4 - 33 1/2
Tall sizes have 2" added to body and sleeve length					
Arm length refers to actual arm length and not the garment's					

LFC-09

PANT SIZE	WAIST RANGE		SEAT RANGE	
0	23	26	34¾	35¾
2	24	27	35¾	36¾
4	25	28	36¾	37¾
6	26	29	37¾	38¾
8	27	30	38¾	39¾
10	28	31	39¾	40¾
12	29½	32½	40¾	42¼
14	31	34	42¼	43¾
16	32½	35½	43	45¼
18	34½	37½	45¼	47¼
20	36½	39½	47¼	49¼
22	38½	41½	49¼	51¼
24	40½	43½	51¼	53¼
26	42½	45½	53¼	55¼
28	44½	47½	55¼	57¼
30	46½	49½	57¼	59¼
32	48½	51½	59¼	61¼
34	50½	53½	61¼	63¼
36	52½	55½	63¼	65¼
38	54½	57½	65¼	67¼
Petite: 4' 11" - 5' 3"				
Regular: 5' 3½" - 5' 7"				
Tall: 5' 7½" - 5' 11"				
NOTE: This fit chart is used for multiple products. Some sizes may not be available for all products. Please refer to the Product Detail section to see available sizes for the product you are considering. If the size you need is not available to choose, please contact customer support for assistance.				

LFC-13

Alpha	Numeric	Bust		Waist		Hip	
XS	2	31½	32	25	25½	35	35½
	4	32½	33	26	26½	36	36½
S	6	33½	34	27	27½	37	37½
	8	34½	35	28	28½	38	38½
M	10	35½	36	29	29½	39	39½
	12	36½	37½	30	31	40	41
L	14	38	39	31½	32½	41½	42½
	16	39½	40½	33	34	43	44
XL	18	41½	42½	34½	36	44½	46
	20	43½	44½	36½	38	46½	48
XXL	22	45½	46½	38½	40	48½	50
	24	47½	48½	40½	42	50½	52
3XL	26	49½	50½	42½	44	52½	54
	28	51½	52½	44½	46	54½	56
4XL	30	53½	54½	46½	48	56½	58
	32	55½	56½	48½	50	58½	60
Petite: 4' 11" - 5' 3"							
Regular: 5' 3½" - 5' 7"							
Tall: 5' 7½" - 5' 11"							
NOTE: This fit chart is used for multiple products. Some sizes may not be available for all products. Please refer to the Product Detail section to see available sizes for the product you are considering. If the size you need is not available to choose, please contact customer support for assistance.							

NP2003

NP2003 - Womens Bottoms												
Size (inches)	XS		Small		Medium		Large		XL		Extended	
Numeric Size	0	2	4	6	8	10	12	14	16	18	20	
Waist	25	26	27	28	29	30	31.5	33	35	37	39	
Chest Hip	35.5	36.5	37.5	38.5	39.5	40.5	42	43.5	45.5	47.5	49.5	
Size (inches)Regular = 5'5" - 5'7", Tall = 5'8" - 5'11"												

NP2111

NP2111/12010 Women's Jean														
Size	2	4	6	8	10	12	14	16	18	20	22	24	26	28
Waist	26 1/2	27 1/2	28 1/2	29 1/2	30 1/2	32	33 1/2	35	37	39	41	43	45	47
Hip	36 1/2	37 1/2	38 1/2	39 1/2	40 1/2	41 1/2	43	45	47	49	51	53	55	57
Length														
Regular	*	*	*	*	*	*	*	*	*	*	*	*	*	*
Long			*	*	*	*	*	*	*	*	*	*	*	

UNISEX

NP2144

NP2144/2144 Unisex Convertible Trousers					
Size	S	M	L	XL	2XL
Waist	28	31	33	36	38
Length					
Regular	28	30	31	31	31
Long	30	32	33	33	33

FIT CHARTS VOLUNTEER

UNISEX

FS3116

FS3116/176 Men's Gore-Tex® Hood			
Order Size	S - M	L - XL	XXL - 3XL
Overshell Size	Small & Medium	Large & X-Large	XX-Large & 3XL-Large
Hood designed to snap on the collar of the Overshell FS3106 (#189) Hoods offered in combined sizes. Please order your hood in the dual size that contains the same size as your overshell.			

NP3206

NP3206/3206 Unisex Volunteer Hip Length Gore-tex Shell without Badgetab and Nameplate - Brown						
Size	S	M	L	XL	2XL	3XL
Chest	44	48	52	56	60	64
Regular Sleeve Length	34	35	36	37	37 1/2	38
Regular	*	*	*	*	*	*
Long	*	*	*	*	*	*
Long- add 1" to body length and 1" to sleeve length						

FS3305

Order Size	XS	S	M	L	XL	2XL	3XL	4XL
Chest	32"-34"	36"-38"	40"-42"	44"-46"	48"-50"	52"-54"	56"-58"	60"-62"
Long			*	*	*	*	*	

FIT CHARTS LIFEGUARD

MEN'S

NP5129

NP5129							
COMPETITION SIZES	28	30	32	34	36	38	40
SHORT SIZES	M	M	L	L	XL	XL	XXL
CHEST	34	36	38	40	42	44	46
WAIST	28-30	30-32	32-34	34-36	36-38.5	38.5-41	41-43
HIP	33-35	35-37	37-39	39-41	41-43	43-45.5	45.5-48

NP5133

NP5133															
COMPETITION SIZES	18	20	22	24	26	28	30	32	34	36	38	40	42	44	46
SHORT SIZES	N/A	N/A	N/A	XS	XS	S	M	M	L	L	XL	XL	XXL	XXL	XXXL
CHEST	24	26	28	30	32	34	36	38	40	42	44	46	48	50	52
WAIST	20-22	22-24	24-25	25-26	26-28	28-30	30-32	32-34	34-36	36-38.5	38.5-41	41-43	43-45	45-47	47-49
HIP	24-26"	26-28"	28-30"	30-32"	32-33	33-35	35-37	37-39	39-41	41-43	43-45.5	45.5-48	48-50	50-52	52-54

WOMEN'S

NP5130

NP5130										
COMPETITION SIZES	22	24	26	28	30	32	34	36	38	40
SHORT SIZES	N/A	XS	XS	S	M	M	L	L	XL	XL
CHEST	28	30	32	34	36	38	40	42	44	46
WAIST	24-25	25-26	26-28	28-30	30-32	32-34	34-36	36-38.5	38.5-41	41-43
HIP	28-30"	30-32"	32-33	33-35	35-37	37-39	39-41	41-43	43-45.5	45.5-48

NP5131

NP5131										
AQUASHAPE SIZES	4	6	8	10	12	14	16	18	20	22
AQUASHAPE SEPARATE SIZES	S	S	M	M	L	L	XL	XL	2X	2X
CHEST	30-32	32-34	34-36	36-38	38-40	40-42	42-44	44-46	46-48	48-50
WAIST AT NARROWEST	24-25	25-27	27-29	29-31	31-33	33-35	35-37	37-39	39-41.5	41.5-44
HIP AT FULLEST	33-35	35-37	37-39	39-40.5	40.5-42	42-44	44-46	46-48	48-50	50-53
TORSO	57	58.5	60	61.5	63	64.5	66	67.5	69	70.5

NP5132

NP5134											
AQUASHAPE SIZES	2	4	6	8	10	12	14	16	18	20	22
AQUASHAPE SEPARATE SIZES	XS	S	S	M	M	L	L	XL	XL	2X	2X
CHEST	28-30	30-32	32-34	34-36	36-38	38-40	40-42	42-44	44-46	46-48	48-50
WAIST AT NARROWEST	23-24	24-25	25-27	27-29	29-31	31-33	33-35	35-37	37-39	39-41.5	41.5-44
HIP AT FULLEST	31-33	33-35	35-37	37-39	39-40.5	40.5-42	42-44	44-46	46-48	48-50	50-53
TORSO	55.5	57	58.5	60	61.5	63	64.5	66	67.5	69	70.5

NP5134

NP5134											
AQUASHAPE SIZES	4	6	8	10	12	14	16	18	20	22	
AQUASHAPE SEPARATE SIZES	S	S	M	M	L	L	XL	XL	2X	2X	
CHEST	30-32	32-34	34-36	36-38	38-40	40-42	42-44	44-46	46-48	48-50	
WAIST AT NARROWEST	24-25	25-27	27-29	29-31	31-33	33-35	35-37	37-39	39-41.5	41.5-44	
HIP AT FULLEST	33-35	35-37	37-39	39-40.5	40.5-42	42-44	44-46	46-48	48-50	50-53	
TORSO	57	58.5	60	61.5	63	64.5	66	67.5	69	70.5	



FIT CHARTS LIFEGUARD

UNISEX

NEESE

Size	Chest	Waist*	Waist**	Sleeve Length	Sewn Trouser Inseam	Heatseal Trouser Inseam
S	34-36	36-38	28-32	33-34.5	30-30.5	28.75
M	37-40	39-41	33-36	34.5-35.5	30.5-31	28.75
L	41-44	42-44	37-40	35.5-36	31-31.5	29
XL	45-48	45-46	41-44	36-37	31.5-32	29
2XL	49-52	47-48	45-48	37-38	32-32.5	29.25
3XL	53-56	49-51	49-52	38-39	32.5-33	29.25
4XL	57-60	52-53	53-56	39-40	33-33.5	29.5
5XL	61-63	54-56	57-60	40-40.5	33.5-34	29.5
6XL	64-66	57-58	61-64	40.5-41	34-34.5	29.75
Waist* for elastic waist trousers and heatseal bib trousers						
Waist** for sewn bib trousers						

NP3223

Size	S	M	L	XL	XXL	3XL	4XL
Chest (inches)	35-38	39-41	42-45	46-49	50-52	53-56	57-60

NP5123

NP5123	S	M	L	XL	2XL	3XL
CHEST	18	20	22	24	26	28
SLEEVE LENGTH	33 1/2	34 1/2	35 1/2	36 1/2	37 1/2	38 1/2
BODY LENGTH AT BACK	27 1/2	28 1/2	30 1/2	31	32	33

NP5127

NP5127	S	M	L	XL	2XL	3XL
INSEAM LENGTH	30"	30"	30"	30.5"	31"	34"
WAIST WIDTH	28"	31"	32.5"	25.5"	38"	40.5"

NP3221B

Size	S	M	L	XL	XXL	3XL	4XL	5XL	6XL
Waist	30	34	38	42	46	50	54	57	60
Inseam	28.75	28.75	29	29	29.25	29.25	29.5	29.5	29.75

NP5121

NP5121	XS	S	M	L	XL	2XL	3XL	4XL
BODY LENGTH	26.5	28	29.25	30.25	31.25	32.5"	33.5"	34.5
BODY WIDTH	16	18	20	22	24	26	28	30
SLEEVE LENGTH	15	15.75	17	18.25	19.5	20.75	22	23

NP5125

NP5125	S	M	L	XL	2XL	3XL
BODY WIDTH	21	23	25	27	29	30
FULL BODY LENGTH	27.5	28.5	29.5	30.5	31.5	31.5
SLEEVE LENGTH	36.5	37.75	39	40.25	41.5	42.75

NP7014

NP7014	S	M	L	XL	2XL	3XL
Size						
Hat Size	6 3/4 - 6 7/8	7 - 7 1/8	7 1/4 - 7 3/8	7 1/2 - 7 3/4	7 7/8 - 8	8 1/8 - 8 1/4
Head Measurement	21 1/2	22 1/4	23	23 7/8	24 5/8	25 3/8

FIT CHARTS LAW ENFORCEMENT L.E.

MEN'S

MFC-98

Size	Neck	Chest	Waist	Sleeve Length			
-	-	-	-	SH	RG	LN	XLN
XS	12 5/8 - 13 1/2	28 1/2 - 32	31 1/2	32 1/2	33 1/2	35	36 1/2
S	13 5/8 - 14 1/2	32 1/2 - 36	35 1/4	33	34	35 1/2	37
M	14 5/8 - 15 1/2	36 1/2 - 40	39 3/4	33 1/2	34 1/2	36	37 1/2
L	15 5/8 - 16 1/2	40 1/2 - 44	44 1/4	34	35	36 1/2	38
XL	16 5/8 - 17 1/2	44 1/2 - 48	48 3/4	34 1/2	35 1/2	37	38 1/2
2XL	17 5/8 - 18 1/2	48 1/2 - 52	52 3/4	35	36	37 1/2	39
3XL	18 5/8 - 19 1/2	52 1/2 - 56	56 6/4	35 1/2	36 1/2	38	39 1/2
4XL	19 5/8 - 20 1/2	56 1/2 - 60	60 3/4	36	37	38 1/2	40
5XL	20 5/8 - 21 1/2	60 1/2 - 64	60 3/4	36 1/2	37 1/2	40	40 1/2

WOMEN'S

LFC-10

Size	Numeric	Bust	Waist	Hip
S	34	33	25	34 ½
		34	27	36 ½
M	36	35	27	36 ½
		36	29	38 ½
L	38	37	29	38 ½
		38	31	40 ½
	40	39	31	40 ½
		40	33	42 ½
XL	42	41	33	42 ½
		42	35	44 ½
	44	43	35	44 ½
		44	37	46 ½
XXL	46	45	37	46 ½
		46	39	48 ½
	48	47	39	48 ½
		48	41	50 ½
3XL	50	49	41	50 ½
		50	43	52 ½
	52	51	43	52 ½
		52	45	54 ½
4XL	54	53	45	54 ½
		54	47	56 ½
	56	55	47	56 ½
		56	49	58 ½
5XL	58	57	49	58 ½
		58	51	61 ½
	60	59	51	61 ½
		60	53	62 ½
6XL	62	61	53	62 ½
		62	55	64 ½
	64	63	55	64 ½
		64	57	66 ½

Petite: 4' 11" - 5' 3"

Regular: 5' 3½" - 5' 7"

Tall: 5' 7½" - 5' 11"

NOTE: This fit chart is used for multiple products. Some sizes may not be available for all products. Please refer to the Product Detail section to see available sizes for the product you are considering. If the size you need is not available to choose, please contact customer support for assistance.

UNISEX

MFC-83

Chest Maximum	Alpha Size
36	XS
39	S
42	M
45	L
48	XL
51	XXL
55	3XL
59	4XL
63	5XL

FIT CHARTS SEARCH AND RESCUE

UNISEX

NP5010

Size	XS	S	M	L	XL	2XL	3XL	4XL
Chest	32-34	35-38	39-41	42-45	46-49	50-52	53-56	57-60
Neck/Collar	13.5-14	14.5-15	15.5-16	16.5-17	17.5-18	18.5-19	19.5-20	20.5-21

NP5011

Size	XS	S	M	L	XL	2XL	3XL	4XL
Chest	32-34	35-38	39-41	42-45	46-49	50-52	53-56	57-60



FIT CHARTS SHIRTS

MEN'S

MFC-04

SIZE (Neck measurement):	If waist / mid-section is no more than:	Sleeve Length						
		Sleeve Length is based on actual body measurement. Body length varies accordingly as shown below:						
		32	33	34	35	36	37	SS
14	31 1/4	Regular Back Length	Regular Back Length plus 1 1/2"	Regular Back Length plus 4"	Regular Back Length plus 1 1/2"	Regular Back Length plus 1 1/2"	Regular Back Length plus 1 1/2"	Regular Back Length plus 1 1/2"
14 1/2	33 1/2							
15	35 3/4							
15 1/2	38							
16	40 1/4							
16 1/2	42 1/2							
17	44 3/4							
17 1/2	47							
18	49							
18 1/2	51							
19	53							

NOTE: This fit chart is used for multiple products. Some sizes may not be available for all products. Please refer to the Product Detail section to see available sizes for the product you are considering. If the size you need is not available to choose, please contact customer support for assistance.

MFC-46

SIZE	Neck measurement:	Chest:	If waist / mid-section is no more than:	SLEEVE LENGTH		
				RG	LN	XLN
S	13% - 14 1/2	34 1/2 - 38	36	34 1/4	35 3/4	37 1/4
M	14% - 15 1/2	38 1/2 - 42	40	34 3/4	36 1/4	37 3/4
L	15% - 16 1/2	42 1/2 - 46	44	35 1/4	36 3/4	38 1/4
XL	16% - 17 1/2	46 1/2 - 50	48	35 3/4	37 1/4	38 3/4
2XL	17% - 18 1/2	50 1/2 - 53	51 1/2	36 1/4	37 3/4	39 1/4
3XL	18% - 19 1/2	53 1/2 - 56	55	36 3/4	38 1/4	39 3/4
4XL	19% - 20 1/2	56 1/2 - 59	58 1/2	37 1/4	38 3/4	40 1/4
5XL	20% - 21 1/2	59 1/2 - 62	62	37 3/4	39 1/4	40 3/4

BACK LENGTH:

RG - Regular Back Length

LN - Regular Back Length plus 1 1/2"

XLN - Regular Back Length plus 4"

SS - Regular Back Length

SSL - Regular Back Length plus 4"

NOTE: This fit chart is used for multiple products. Some sizes may not be available for all products. Please refer to the Product Detail section to see available sizes for the product you are considering. If the size you need is not available to choose, please contact customer support for assistance.

MFC-98

Size	Neck	Chest	Waist	Sleeve Length			
-	-	-	-	SH	RG	LN	XLN
XS	12 5/8 - 13 1/2	28 1/2 - 32	31 1/2	32 1/2	33 1/2	35	36 1/2
S	13 5/8 - 14 1/2	32 1/2 - 36	35 1/4	33	34	35 1/2	37
M	14 5/8 - 15 1/2	36 1/2 - 40	39 3/4	33 1/2	34 1/2	36	37 1/2
L	15 5/8 - 16 1/2	40 1/2 - 44	44 1/4	34	35	36 1/2	38
XL	16 5/8 - 17 1/2	44 1/2 - 48	48 3/4	34 1/2	35 1/2	37	38 1/2
2XL	17 5/8 - 18 1/2	48 1/2 - 52	52 3/4	35	36	37 1/2	39
3XL	18 5/8 - 19 1/2	52 1/2 - 56	56 6/4	35 1/2	36 1/2	38	39 1/2
4XL	19 5/8 - 20 1/2	56 1/2 - 60	60 3/4	36	37	38 1/2	40
5XL	20 5/8 - 21 1/2	60 1/2 - 64	60 3/4	36 1/2	37 1/2	40	40 1/2

MFC-05

SIZE (Neck measurement):	If waist / mid-section is no more than:	Sleeve Length						
		Sleeve Length is based on actual body measurement. Body length varies accordingly as shown below:						
		32	33	34	35	36	37	SS
14	30	Regular Back Length	Regular Back Length plus 1 1/2"	Regular Back Length plus 4"	Regular Back Length plus 1 1/2"	Regular Back Length plus 1 1/2"	Regular Back Length plus 1 1/2"	Regular Back Length plus 1 1/2"
14 1/2	32							
15	34							
15 1/2	36							
16	38							
16 1/2	41							
17	43							
17 1/2	48							
18	48							
18 1/2	50							
19	52							

NOTE: This fit chart is used for multiple products. Some sizes may not be available for all products. Please refer to the Product Detail section to see available sizes for the product you are considering. If the size you need is not available to choose, please contact customer support for assistance.

MFC-55

SIZE:	Neck measurement:	If waist / mid-section is no more than:	Sleeve Length						
			Sleeve Length is based on actual body measurement. Body length varies accordingly as shown below:						
			32	33	34	35	36	37	SS
S	14 1/2	33 1/2	Regular Back Length	Regular Back Length plus 1 1/2"	Regular Back Length plus 4"	Regular Back Length plus 1 1/2"	Regular Back Length plus 1 1/2"	Regular Back Length plus 1 1/2"	Regular Back Length plus 1 1/2"
M	15 1/2	38							
L	16 1/2	42 1/2							
XL	17 1/2	47							
XXL	18 1/2	51							

NOTE: Sleeve Length is based on actual body measurement. Body length varies accordingly as shown above.

NOTE: This fit chart is used for multiple products. Some sizes may not be available for all products. Please refer to the Product Detail section to see available sizes for the product you are considering. If the size you need is not available to choose, please contact customer support for assistance.

NP1112

NP2111/12010 Women's Jean														
Size	2	4	6	8	10	12	14	16	18	20	22	24	26	28
Waist	26 1/2	27 1/2	28 1/2	29 1/2	30 1/2	32	33 1/2	35	37	39	41	43	45	47
Hip	36 1/2	37 1/2	38 1/2	39 1/2	40 1/2	41 1/2	43	45	47	49	51	53	55	57
Length														
Regular	*	*	*	*	*	*	*	*	*	*	*	*	*	*
Long			*	*	*	*	*	*	*	*	*	*	*	*

FIT CHARTS SHIRTS

WOMEN'S

LFC-06

Alpha	Numeric	Bust		Waist		Hip	
XS	2	27½	29	21	22½	29½	31
	4	29½	31	23	24½	31½	33
S	6	31½	33	25	26½	33½	35
	8	33½	35	27	28½	35½	37
M	10	35½	37	29	30½	37½	39
	12	37½	39	31	32½	39½	41
L	14	39½	41	33	34½	41½	43
	16	41½	43	35	36½	43½	45
XL	18	43½	45	37	38½	45½	47
	20	45½	47	39	40½	47½	49
XXL	22	47½	49	41	42½	49½	51
	24	49½	51	43	44½	51½	53
3XL	26	51½	53	45	46½	53½	55
	28	53½	55	47	48½	55½	57
4XL	30	55½	57	49	50½	57½	59
	32	57½	59	51	52½	59½	61

Petite: 4' 11" - 5' 3"

Regular: 5' 3½" - 5' 7"

Tall: 5' 7½" - 5' 11"

NOTE: This fit chart is used for multiple products. Some sizes may not be available for all products. Please refer to the Product Detail section to see available sizes for the product you are considering. If the size you need is not available to choose, please contact customer support for assistance.

LFC-10

Size	Numeric	Bust	Waist	Hip
S	34	33	25	34 ½
		34	27	36 ½
M	36	35	27	36 ½
		36	29	38 ½
L	38	37	29	38 ½
		38	31	40 ½
	40	39	31	40 ½
		40	33	42 ½
XL	42	41	33	42 ½
		42	35	44 ½
	44	43	35	44 ½
		44	37	46 ½
XXL	46	45	37	46 ½
		46	39	48 ½
	48	47	39	48 ½
		48	41	50 ½
3XL	50	49	41	50 ½
		50	43	52 ½
	52	51	43	52 ½
		52	45	54 ½
4XL	54	53	45	54 ½
		54	47	56 ½
	56	55	47	56 ½
		56	49	58 ½
5XL	58	57	49	58 ½
		58	51	61 ½
	60	59	51	61 ½
		60	53	62 ½
6XL	62	61	53	62 ½
		62	55	64 ½
	64	63	55	64 ½
		64	57	66 ½

Petite: 4' 11" - 5' 3"

Regular: 5' 3½" - 5' 7"

Tall: 5' 7½" - 5' 11"

NOTE: This fit chart is used for multiple products. Some sizes may not be available for all products. Please refer to the Product Detail section to see available sizes for the product you are considering. If the size you need is not available to choose, please contact customer support for assistance.

NP1115

NP1115/10701 Women's Long Sleeve Tropical Duty Shirt												
Size	28	30	32	34	36	38	40	42	44	46	48	50
Neck	13 1/4	13 3/4	14 1/4	14 3/4	15 1/4	15 3/4	16 1/4	16 3/4	17 1/4	17 3/4	18 1/4	18 3/4
Chest	34	36	38	40	42	44	46	48	50	52	54	56
Sleeve Length	31 1/4	31 1/2	31 3/4	32	32 1/4	32 3/4	33 1/4	33 3/4	34 1/4	34 3/4	35 1/4	35 3/4
Back Length												
Regular	*	*	*	*	*	*	*	*	*	*	*	*
Long	*	*	*	*	*	*	*	*	*	*	*	*

UNISEX

MFC-01

Alpha Size	Max Chest
XS	30
S	34
M	38
L	40
XL	44
XXL	48
3XL	50
4XL	54
5XL	58

NOTE: This fit chart is used for multiple products. Some sizes may not be available for all products. Please refer to the Product Detail section to see available sizes for the product you are considering. If the size you need is not available to choose, please contact customer support for assistance.

NP5001

Size	Waist (in)
S	28-30
M	32-34
L	36-38
XL	40-42
XXL	44-46
3XL	48-50

MADE TO MEASURE

If you need sizes outside the ranges listed on your website, please contact the Workwear Outfitters™ Customer Service Department at (800) 545-6590 during the hours of 7 AM - 5 PM CST Monday - Friday. Delivery of made to measure items requires a minimum of 60 to 90 days.

RETURNS & EXCHANGES

All returns/exchanges (other than defects) must be made within 60 days of receipt of your order. The return authorization label must clearly state the reason an item is being returned.

Garments that have been worn, altered, laundered or have labels removed cannot be returned/exchanged.

Any defective item can be returned with a description of the defect. Defective items (not including normal wear & tear) can be returned at any time, within one year of receipt.

NON STOCK: means the particular size requested does not generate enough volume to require stocking it on the shelf with inventory readily available for shipment. The normal turn around time is 60-90 days from the date of order.

CAUTION: Garments contained in this catalog meet government flammability Class 1 requirements but do not provide protection from ignition sources, molten substances or chemical exposure. Special flame resistant garments are available if required.

Product images shown here are photomechanically reproduced. As a result, colors may vary from actual fabric samples.

Lintrak® - a trademark of Supercrease Limited. Velcro® - registered trademark of Velcro Industries B.V.
GORE-TEX® is a registered trademark of W.L. Gore & Associates, Inc. Thinsulate™ is a trademark of 3M Company.
K2r® is a trademark of K2rProdukte AG.

