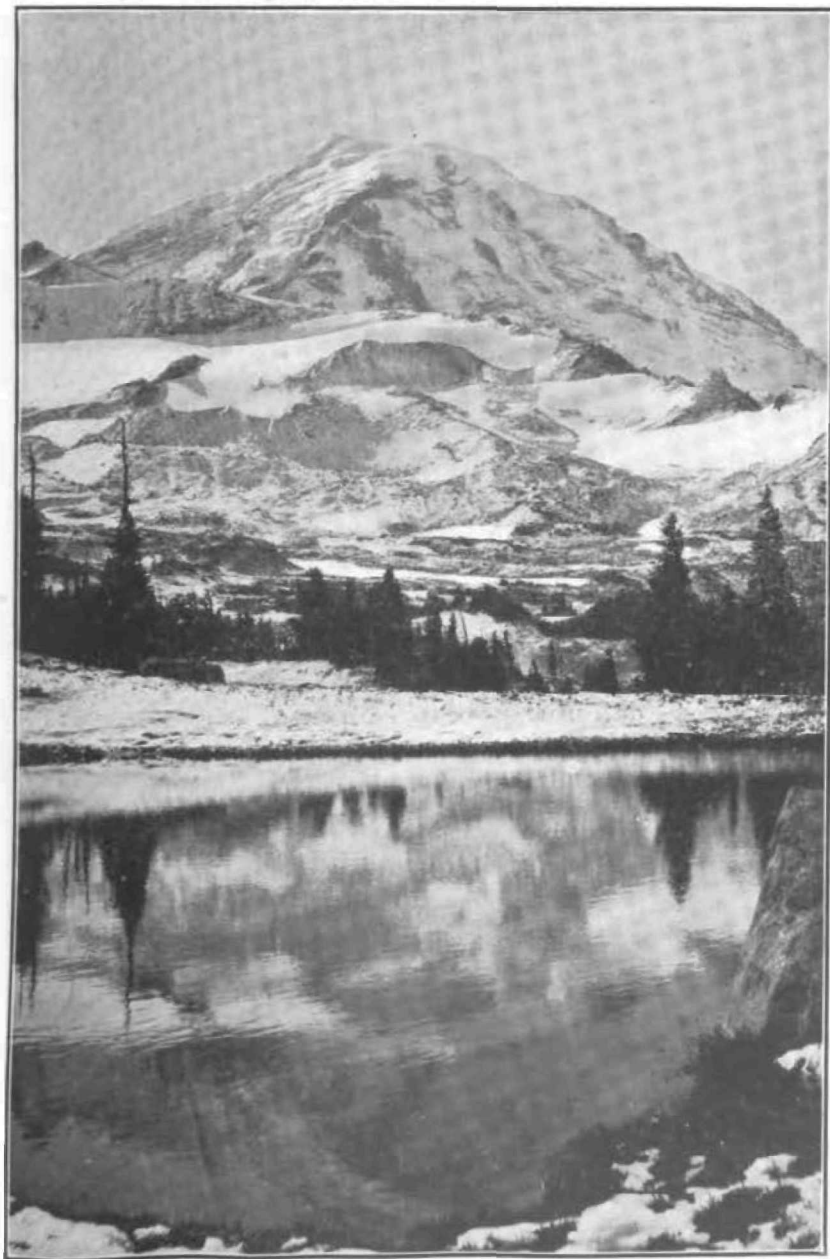

THIRD ANNUAL OUTING OF THE MOUNTAINEERS ON MOUNT RAINIER.

The Third annual outing of the Mountaineers, planned for the last two weeks of July and the first week of August, will be to the north side of Mount Rainier. The club will visit Spray Park, Moraine Park and Grand Park, and will make the ascent from the northeast side. The region to be visited is the wildest and grandest part of the Rainier National Park, and the parks are the largest and most beautiful of the many on this mountain. Spray Park alone, contains nearly 20,000 acres and is a great open area of grass and flowers, broken by groves of mountain trees.

Professor Flett, who made the ascent of the northeast slope of the mountain, says that it is far easier than the southern route past Gibraltar. The ascent of Rainier is difficult only because of the altitude reached, 14,363 feet. The mountain is the next to the highest in the United States, and being in the northern part, carries a very heavy mass of snow and ice. This forms the greatest glacial system in the United States. An opportunity will be given to visit three of these great glaciers, the Mowich, Carbon, and the White, while those who wish to join the knapsack trips, will visit nearly every glacier on the mountain. At the close of the outing, a small party will make a knapsack trip from the camp at the base of White Glacier, to Paradise Park and Indian



MOUNT RAINIER FROM CRATER LAKE

Henry's Hunting Ground, on the southeast side of the mountain. This will enable those who wish to make the circuit of this great mountain, to do so without any great hardship, as it will be necessary to carry only three days provisions at any one time.

The outing is planned for three weeks, and this time will be crowded, in seeing the many beautiful places, but those who can be away for only two weeks can join, planning to come to the first camp and go out before the outing is over, or they can come to the second camp and stay to make the ascent of the mountain.

The party will leave Seattle about the middle of July, starting at 8 o'clock in the morning over the Northern Pacific to Fairfax. From here the party will walk to camp in the forest, on the bank of Evans creek, a distance of ten miles. At this camp the club will begin furnishing meals, and will continue this throughout the outing. The second day's walk will be ten miles, to the main camp in Spray Park, where the party will stay for one week. From here they will go across Carbon Glacier to some camp near the White Glacier, where the second main camp will be established, and from which the ascent will be made.

The expense of the outing has not been determined as yet, but will probably be \$45.00. Applications have already begun coming in, and while no reservations have been made, the applications will be considered in the order of their receipt. Until further notice, no money deposit is required on applications, and all applicants will be notified when a deposit is necessary.

ASAHEL CURTIS,
Chairman Outing Committee.