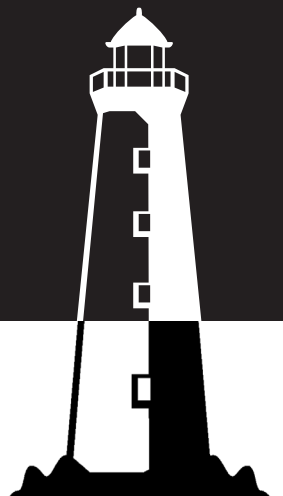


NHLPA PROGRAM HIGHLIGHTS REPORT

National Historic Lighthouse Preservation Act







Contents



Executive Summary.....	1
NHLPA Program History.....	2
NHLPA Program Roles and Responsibilities.....	4
Program Overview: No Cost Transfers and Public Sales	6
Case Study: Carysfort Reef, Sombrero Key & American Shoal Lighthouses	9
Program Focus: Lighthouse Reversion and Reconveyance.....	10
References	12
Appendix A: Light Stations Conveyed in 2021 and 2022	13
Appendix B: Light Stations Conveyed as of December 2022	14
Appendix C: Total Sales Proceeds 2021–2022.....	20
Appendix D: Light Transfers via Special Legislation and Property Act	23
Appendix E: Light Station Reconveyances as of 2022	24
Appendix F: Photo Credits	25





Executive Summary



Congress passed the National Historic Lighthouse Preservation Act (NHLPA) in 2000 to recognize the significance of light stations for maritime traffic, coastal communities, and not-for-profit organizations (nonprofits). The NHLPA program endeavors to convey these unique historic landmarks to new grantees who will preserve their cultural, recreational, and educational value. Through the NHLPA process, Federal agencies, state and local governments, and nonprofits can obtain historic lights at no cost through no-cost transfers. If suitable public grantees are not identified for a light, the General Services Administration (GSA) will conduct a public sale for the property. Lights that are transferred include covenants in the conveyance document to protect the historic features of the lights and preserve the accessibility of lights to the public. Many of these lights remain active aids-to-navigation (ATONs) and will continue to guide maritime traffic under their new owners in coordination with the U.S. Coast Guard (USCG).

This report provides:

- An overview of the NHLPA;
- The roles and responsibilities of partner agencies executing the program;
- Program highlights from the calendar years 2021 to 2022; and
- Case studies on various NHLPA activities between 2021 and 2022.



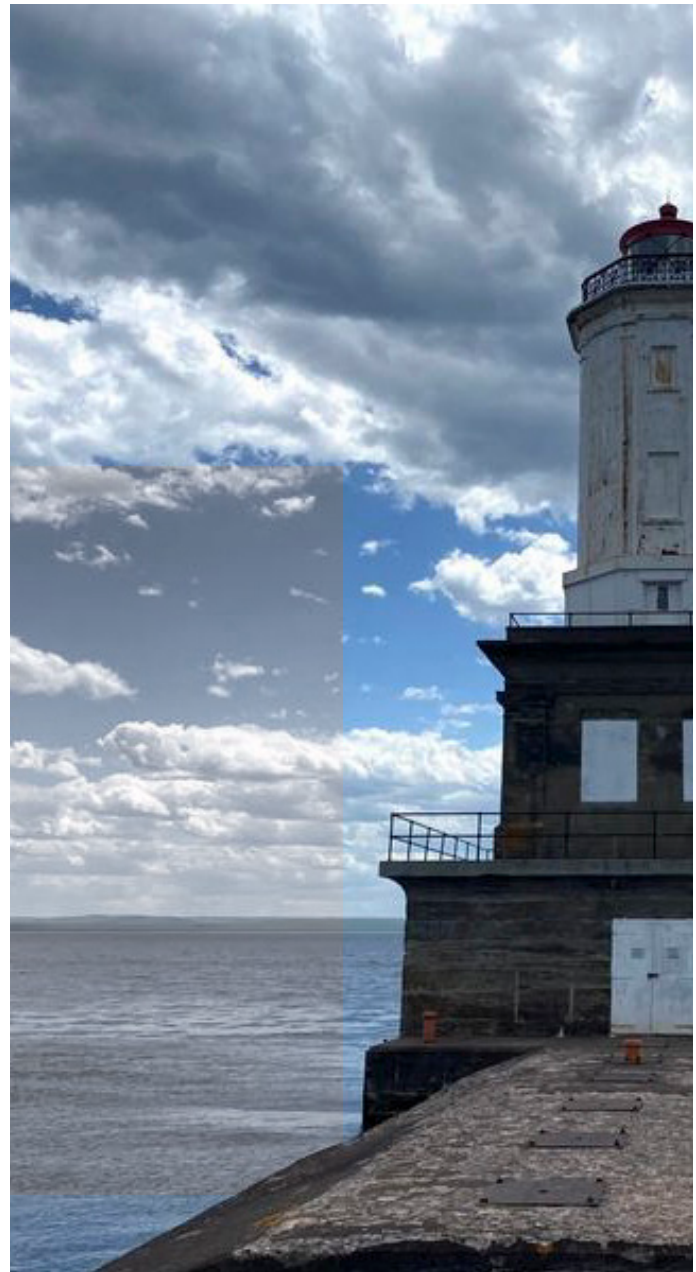
NHLPA Program History

Lighthouses (light stations or lights) serve as critical aids to maritime traffic, ensuring the safe transport of goods and people. Since 1716, over a thousand light stations have been constructed in the United States, although several have been destroyed through natural or man-made disasters.

The United States (U.S.) Lighthouse Establishment managed the nation's light stations from 1789 until it was renamed the "United States Lighthouse Board" in 1852. In 1903, the U.S. Lighthouse Board was transferred to the Department of Commerce and Labor. In 1910, the U.S. Lighthouse Board was renamed the "Bureau of Lighthouses" (Bureau). When the Department of Commerce and Labor split in 1913, the Bureau was assigned to the Department of Commerce. The Bureau merged with USCG in 1939, where it remains today, with the USCG responsible for maintaining federally owned light stations and providing the maintenance for active ATONs.

For various reasons, such as substantial maintenance costs or advances in navigational automation, USCG may declare a light as excess when it is no longer needed by the Federal Government for mission purposes. Excess historic light stations are usually transferred to a new grantee through the NHLPA program. USCG typically retains the right to access the property to maintain the ATON until it is decommissioned. To be eligible for transfer through the NHLPA program, the light station must be defined as "historic" in accordance with the National Historic Preservation Act (NHPA).

Passed in 1966, the NHPA was intended to preserve historic resources and archaeological sites in the United States. The term "historic" means that the property is listed in the National Register of Historic Places, or the federal Landholding Agency (LHA) has concurred with the State Historic Preservation Office (SHPO) to determine the property's eligibility for listing.





NHLPA Program History continued

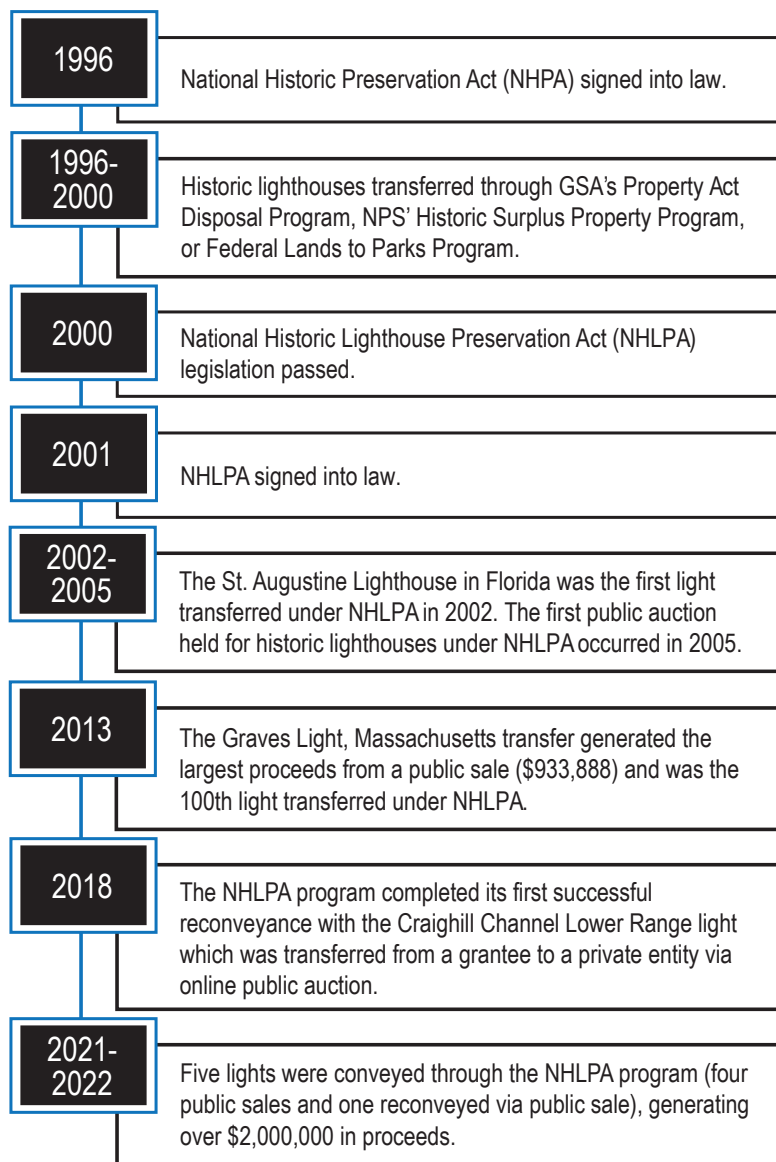


Figure 1: NHLPA Timeline

Prior to the NHLPA, historic light stations were transferred per the Federal Property and Administrative Services Act of 1949 (Property Act) to state or local agencies through the National Park Service's (NPS) Historic Surplus Property Program (formerly known as the Historic Monument Program) or the Federal Lands to Parks Program (**Figure 1**).

GSA also conveyed historic light stations as historic monuments through the Property Act. However, not-for-profit organizations were not eligible to receive a light through these conveyance programs, even if the group spent significant time and money to rehabilitate and maintain a historic light station through a lease with the USCG.

In 1990, the Island Institute of Rockland, Maine, approached USCG about acquiring Heron Neck Light, with the goal of repairing and preserving the light. USCG worked with the state of Maine to create an expedited program to transfer several lights in Maine to local communities. Between 1994 and 2000, the Maine Lighthouse Program successfully transferred 28 lights to new grantees in just 6 years.

Congress passed the NHLPA in 2000 after the success of the Maine Lighthouse Program. The NHLPA was designed to facilitate the transfer of historic lighthouses that are no longer mission-critical to eligible public entities (including nonprofit organizations) or private individuals. These parties must agree to maintain and preserve the light stations so that they remain culturally significant beacons for the future.



NHLPA Program

Roles and Responsibilities

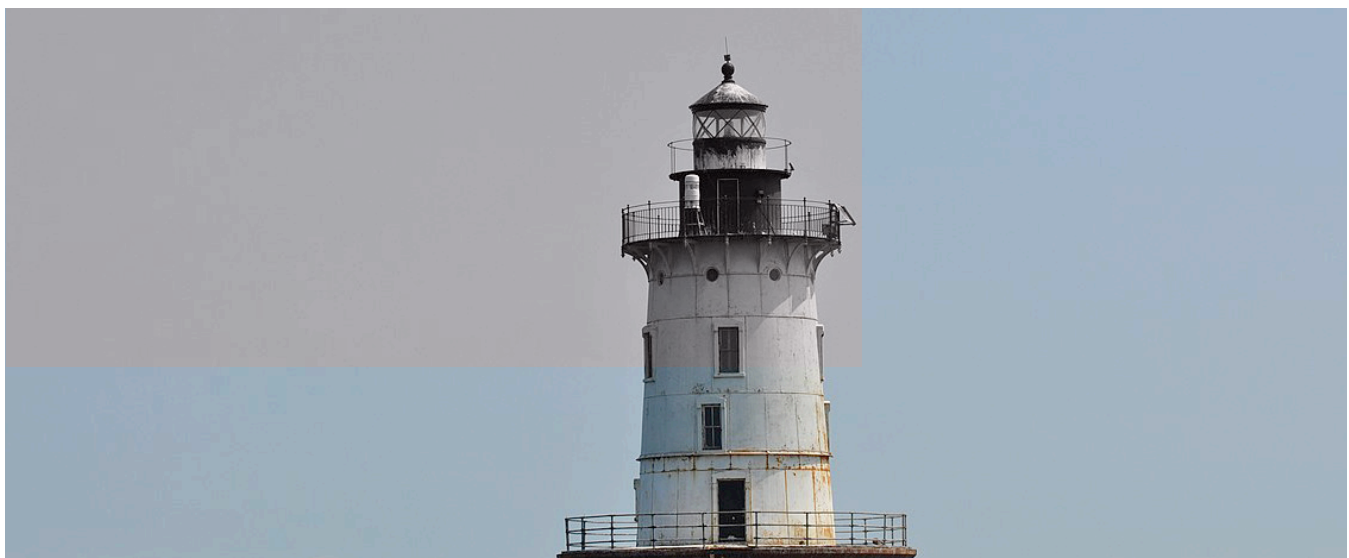


GSA, USCG, and NPS work together to ensure that the Federal Government identifies the best grantee available for a historic light. **Figure 2** outlines the NHLPA process. Many factors influence how a light is transferred, and the process may vary for individual lights. The U.S. Army Corps of Engineers (USACE) also serves as a partner agency to provide licenses to grantees that acquire lights on USACE structures.

Initially, USCG identifies lights that are no longer needed for mission purposes. Each year, the three partner agencies work together to develop a list of lights that will be transferred through the NHLPA program. These lights are announced through Notices of Availability (NOA) on the GSA and NPS websites. GSA's Regional Staff advertises to potentially interested parties via local light station publications and newspapers. Eligible parties submit an Expression of Interest (EOI), and NPS sends the eligible parties an application to apply for ownership of the light for public use purposes. Interested parties can then inspect the property during a

scheduled site visit prior to applying. NPS assesses the applications on the merits of the preservation and reuse plan, financial viability, and how well the applicant is likely to manage the light to determine the most suitable grantee.

The Department of Interior's (DOI) Secretary of Interior will either recommend a single most-suitable applicant to receive the property or will state that there are no suitable applicants. If there are no suitable applicants, the NHLPA authorizes GSA to sell the light station. To ensure continued preservation and maintenance, GSA includes specific covenants for historic preservation and ongoing maintenance in all deeds to new grantees, including public sale recipients. No-cost transfers to public entities also require the grantee to allow public access to the light. The USCG may retain rights to access the light in order to maintain the active ATON, if applicable.





NHLPA Program

Roles and Responsibilities continued

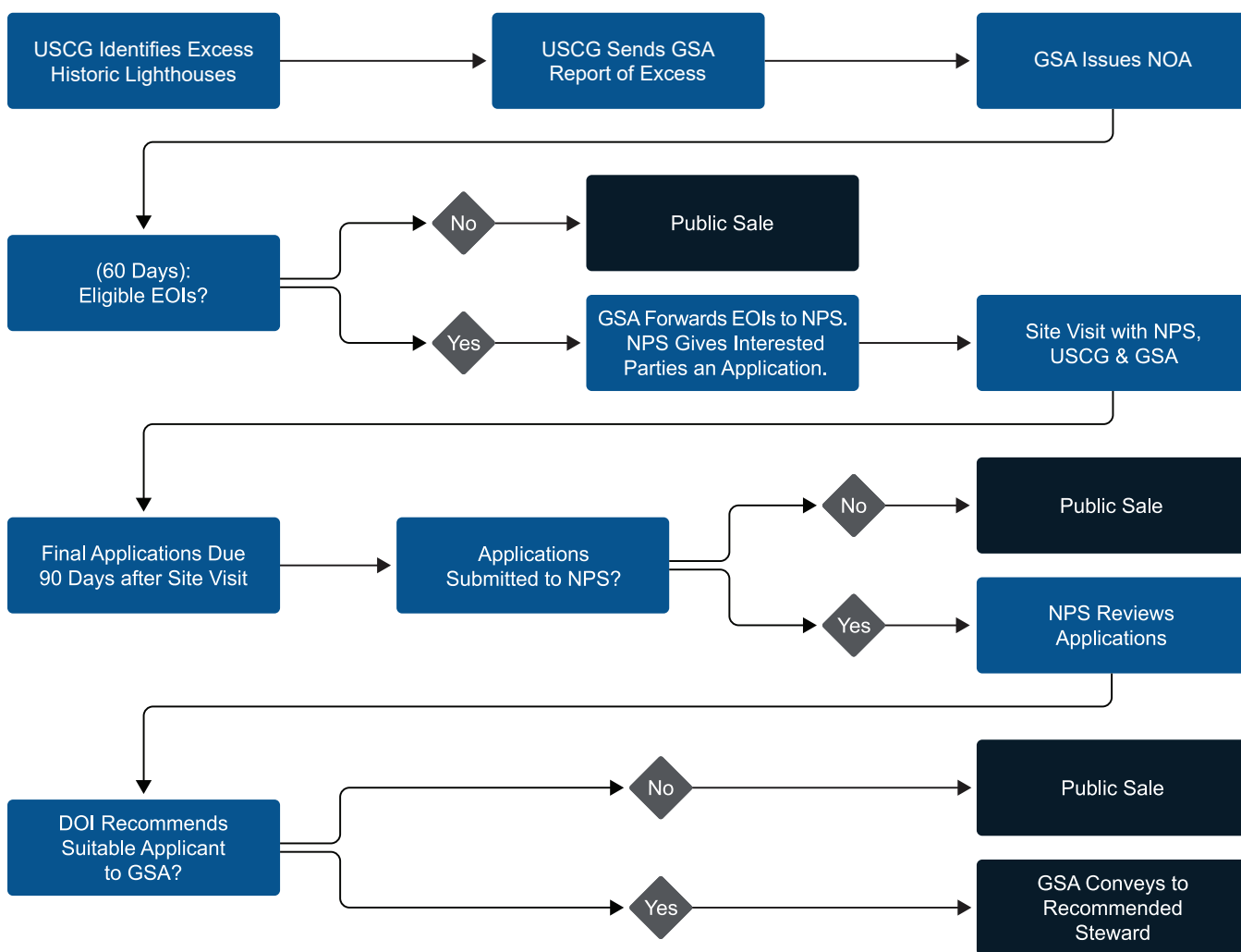


Figure 2: Overview of the NHLPA Process



Program Overview: No Cost Transfers and Public Sales

Since the NHLPA program’s inception in 2000, over 150 light stations have been transferred to new grantees. The primary method of transferring lights to new grantees is through no cost transfers to Federal, state, local governments, or nonprofit organizations. Since Congress enacted NHLPA in 2000, GSA has conveyed 54 percent (a total of 82 lights) to new public entities through no-cost transfers (**Figure 3**). Lights often become a part of the local heritage within a community, and new grantees strive to maintain these important landmarks. Forty-six percent (70 lights total) have been sold via public sale, raising over \$10.3 million dollars through the NHLPA

program. USCG reinvests these proceeds toward ongoing ATON program needs. From 2021-2022, the program experienced several exciting accomplishments including:

- Public sales of five lights: Sand Key Light (Florida), American Shoal Light (Florida), Carysfort Light (Florida), Sombrero Key Light (Florida), Hooper Island Light (Maryland)
- Federal transfer of Alligator Reef Light (Florida)

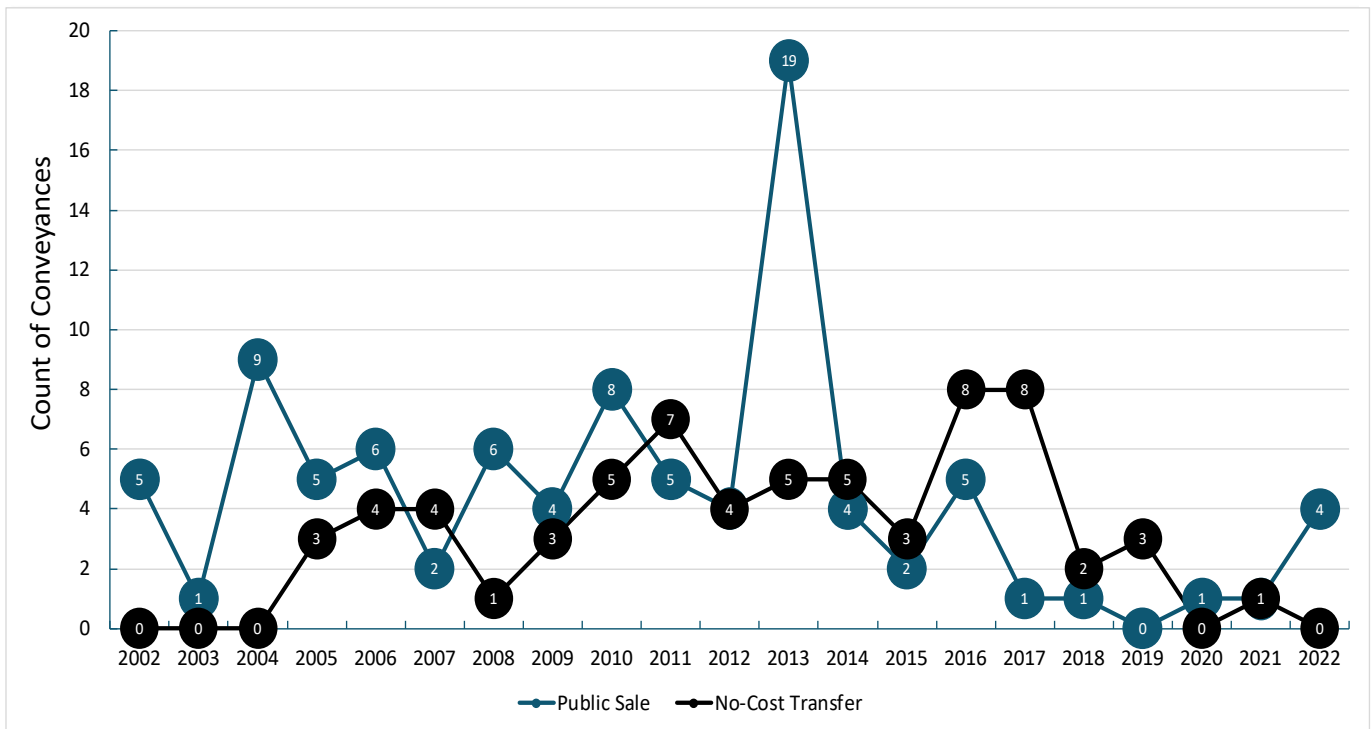


Figure 3: Count of NHLPA Conveyances via Public Sale and No-Cost Transfer from 2002-2022.



Program Overview:

No Cost Transfers and Public Sales continued

Public Sale Proceeds

As of December 2022, the gross public sales proceeds of lights generated by the NHLPA program totals over \$10.3 million (Figure 4).

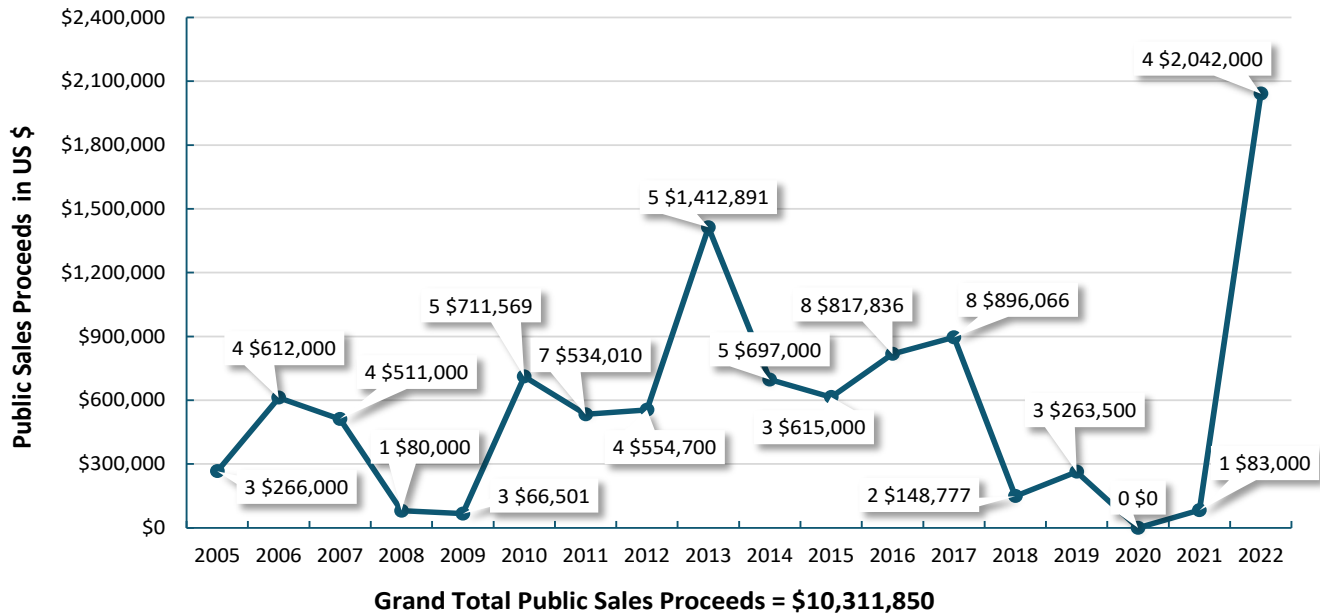


Figure 4: Public Sale Proceeds from 2005-2022.

Total Program Transfers

Figure 5 depicts the number of lights transferred to each type of eligible grantee through the NHLPA program. Since the program's inception, 70 lights (46 percent) have been sold via public sales to private citizens, 43 lights (28 percent) have been transferred to not-for-profit organizations, and 25 lights (17 percent) were transferred to local governments, which typically are local town or county governments. Ten lights (7 percent), primarily located within national parks, were transferred to other Federal agencies. Three lights (2 percent) have been conveyed to state governments.

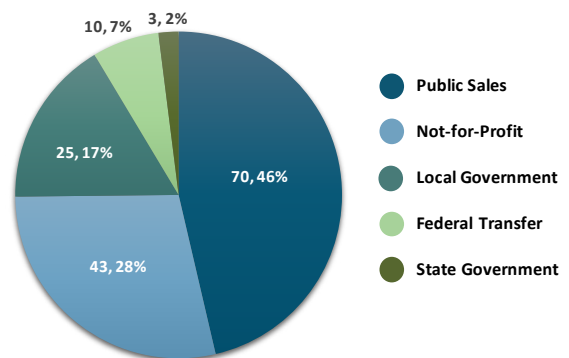
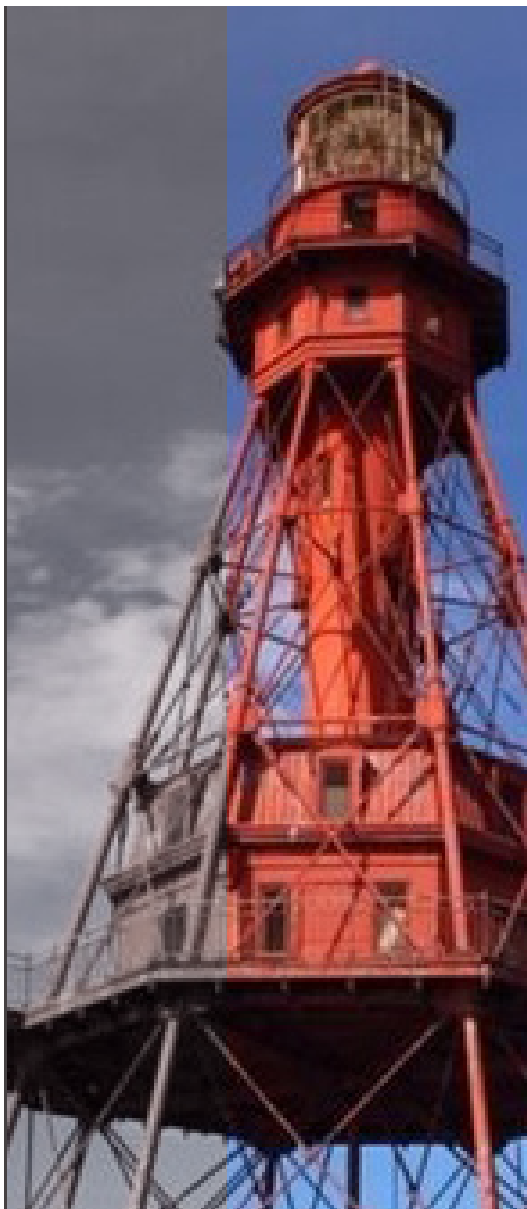


Figure 5: Total No Cost Transfers and Sales by Grantee (2000-2022)





Case Study: Carysfort Reef, Sombrero Key & American Shoal Lighthouses



In May 2022, Carysfort Reef, Sombrero Key, and American Shoal Lighthouses in the Florida Keys were conveyed through online public sales. The three lighthouses were awarded to the same high bidder

After the first round of advertising, interest in the three auctions spread nationwide. The Region 4 (R4) Real Property Disposition (RPD) team partnered with R4's Office of Strategic Communications to assist with media interest, press releases, and social media advertising. RPD registered forty-four bidders between the three auctions which were highly competitive and generated a total of 1.85 million dollars in NHLPA proceeds. Carysfort Reef Lighthouse sold for \$415,000, Sombrero Key for \$575,000, and American Shoal for \$860,000.

Carysfort Reef Lighthouse is located approximately six miles offshore of Key Largo, FL. It is a 124+/- ft cast iron skeletal octagonal screw-pile tower with keeper's quarters built inside the tower, constructed and first lit in 1852.

Sombrero Key Lighthouse is located approximately seven miles offshore of Marathon, FL. It is a 142+/- ft cast iron skeletal octagonal screw-pile tower with keeper's quarters, constructed and first lit in 1858.

American Shoal Lighthouse is located approximately seven miles offshore of Sugarloaf Key, FL. It is a 109+/- ft cast iron skeletal octagonal screw-pile tower with keeper's quarters, constructed and first lit in 1880.

All three of these lights are listed on the National Register of Historic Places (NRHP) and are located within the Florida Keys National Marine Sanctuary (FKNMS) managed by the National Oceanic and Atmospheric Administration (NOAA). They are the last of six Florida Keys Reef Lights to be conveyed out of the U.S. Coast Guard's inventory via the NHLPA. Fowey Rocks Lighthouse located within Biscayne National Park was conveyed to the National Park Service in 2012. Sand Key Lighthouse located offshore of Key West was sold at auction in 2021 and Alligator Reef Lighthouse located offshore of Islamorada was conveyed at no cost to a non-profit, also in 2021.



Program Focus: Lighthouse Reversion and Reconveyance

The National Park Service (NPS) oversees the compliance management process for no-cost transfer recipients of historic lighthouses through the NHLPA program. When NPS regional staff identifies a grantee in a noncompliant status, they provide written notice to the grantee about the noncompliance issue, proposing or requesting possible corrective actions.

NPS staff may be able to determine noncompliance from annual report submissions or site visits but may also be notified about potential concerns by the public or another NHLPA partner agency. Noncompliance occurs when the grantee violates the requirements outlined in their application and/or quitclaim deed.

Examples of conditions that may trigger reconveyance or reversionary actions include, light stations no longer being made available for the public, light stations not being maintained in compliance with the Secretary of the Interior's Standards for the Treatment of Historic Properties, and light stations ceasing to be maintained in a manner that ensures its present or future use as a site for a Federal ATON. Additionally, nonprofit grantees are required in their deeds to maintain their nonprofit status in order to own the light station.

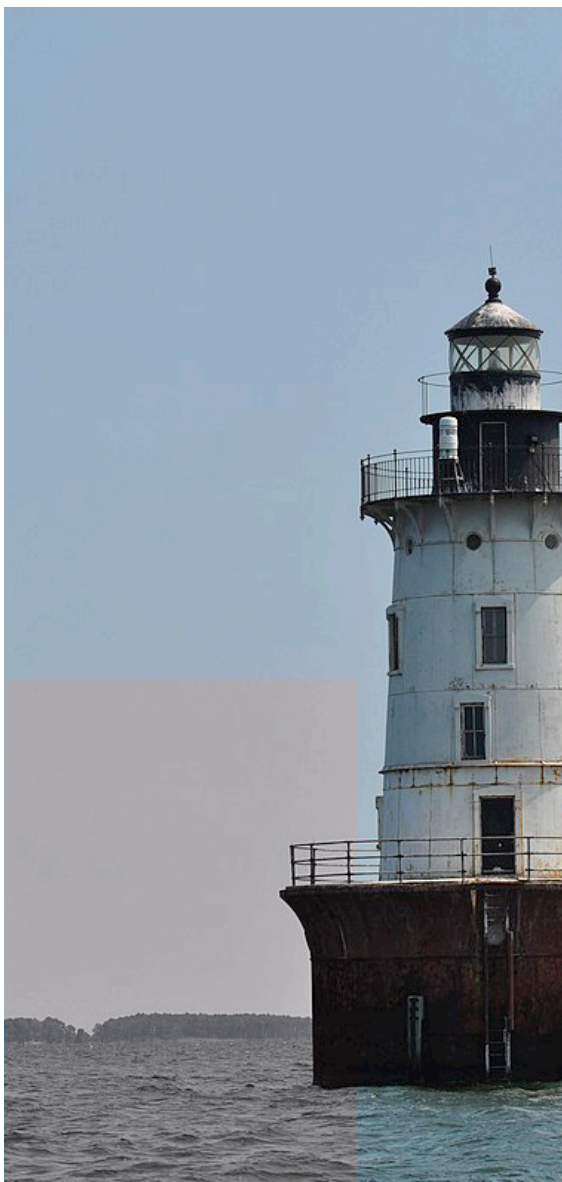
If the grantee is unable or unwilling to remedy the noncompliance matter, the light station may be evaluated to determine suitability for reconveyance to a new eligible entity upon approval by the Secretary of Interior (SOI). If the light station is deemed suitable for reconveyance, NPS will work with GSA to identify a new grantee for the property through another no-cost transfer or conduct a public sale.

There are many factors that may contribute to a grantee being unable to maintain and preserve a historic light station upon conveyance. These structures require years of





Program Focus: Lighthouse Reversion and Reconveyance continued



financial and organizational investment in order to thrive out of Federal ownership. Social, environmental, and systemic factors may complicate or hinder new owners from being able to fulfill their requirements as stipulated in the covenants of the deed.

In recent years, the government has recognized a noticeable increase in non-compliance occurrences. NPS coordinates with GSA (or notifies the State Historic Preservation Office in the case of lights sold through public sales) to determine the best approach for remedying the situation with the current grantee or reconveying the property to a new owner.

Continue reading to learn more about two recent examples of successful reconveyances through the NHLPA program.

Craighill Channel Lower Range Light in Maryland was the first light station to undergo reconveyance through the NHLPA program. The light station was originally transferred in 2005 through a no-cost transfer to a non-profit organization named Historical Place Preservation. One of the conditions of the transfer was that the grantee maintain their non-profit status. However, the non-profit dissolved, causing the light station to be in noncompliance status, triggering the reconveyance process by the NPS. There were no known interested parties for a no-cost transfer so GSA conducted a public sale and sold the light for \$96,000 in 2018.

Another notable lighthouse reconveyance occurred with the Hooper Island Lighthouse, located in the Chesapeake Bay (Maryland). Originally conveyed in 2009, the light station was conveyed through a no-cost transfer to a non-profit organization named U.S. Lighthouse Society. However, in 2017 the organization announced they were no longer able to maintain the light and requested that the government assist with identifying another entity willing to take ownership of the light. Unable to find an eligible entity for a no-cost transfer, the lighthouse sold in 2022 for \$192,000 at a public sale conducted by GSA.



References



General Services Administration. (2021). 2019-2020 Program Highlights Report.

<https://pd.my.salesforce.com/sfc/p/#30000000dixP/a/t0000001iXuK/l1fYdx5sAf30uSabK4pZEpeJRsp9KbAOZrsgLTuLMPk>

GSAuctions.gov. Hooper Island Lighthouse.

<https://gsaauctions.gov/gsaauctions/aucdsclnk?sl=PEACH422007001>

Lighthousefriends.com. Superior Entry Breakwater, WI.

<https://www.lighthousefriends.com/light.asp?ID=262>



Appendix A: Light Stations Conveyed in 2021 and 2022

Light Stations	State	Public Sale/No-Cost Transfer	Sale Amount (\$)
Sand Key Light	Florida	Public Sale	\$83,000
American Shoal Light	Florida	Public Sale	\$860,000
Carysfort Light	Florida	Public Sale	\$415,000
Sombrero Key Light	Florida	Public Sale	\$575,000
Hooper Island Light	Maryland	Public Sale	\$192,000
2021-2022 Total Sales:			\$2,125,000



Appendix B: Light Stations Conveyed as of December 2022

No.	Light Station	State	Year Transferred	Federal Transfer	Local Gov.	Non-Profit	State Gov.	Public Sale
1	St . Augustine Light	Florida	2002			■		
2	Tybee Island Lighthouse Complex	Georgia	2002			■		
3	Little River Light	Maine	2002			■		
4	Esopus Meadows Lighthouse	New York	2002			■		
5	Rondout Creek	New York	2002		■			
6	Point Retreat Light	Alaska	2003			■		
7	Cape Decision Light	Alaska	2004			■		
8	Five Finger Islands Light	Alaska	2004			■		
9	Harbor Of Refuge Breakwater Light	Delaware	2004			■		
10	St . Simons Island Light	Georgia	2004			■		
11	Thomas Point Shoal Light	Maryland	2004		■			
12	Manitou Island Light	Michigan	2004			■		
13	Conimicut Shoal Light	Rhode Island	2004		■			
14	Grays Harbor (Westport) Light	Washington	2004			■		
15	Cheboygan River Front Range Lighthouse	Michigan	2004			■		
16	Newport News Middle Ground Light	Virginia	2005					■
17	Point Sur Light	California	2005				■	
18	Turkey Point Light Station	Maryland	2005				■	
19	St . James (Beaver Harbor) Light	Michigan	2005		■			
20	Smith Point Lighthouse	Virginia	2005					■
21	Thimble Shoal Lighthouse	Virginia	2005					■
22	West Point Light	Washington	2005		■			
23	Gull Rock Light	Michigan	2005			■		
24	Goose Rocks Light Station	Maine	2006					■
25	Sentinel Island Light	Alaska	2006			■		



No.	Light Station	State	Year Transferred	Federal Transfer	Local Gov.	Non-Profit	State Gov.	Public Sale
26	Point Pinos Light	California	2006		■			
27	Molokai Light	Hawaii	2006	■				
28	Cuckold Fog Signal and Light Station	Maine	2006			■		
29	Baltimore Lighthouse	Maryland	2006					■
30	Petit Manan Light	Maine	2006	■				
31	Sandy Point Shoal Lighthouse	Maryland	2006					■
32	Wolf Trap Lighthouse	Virginia	2006					■
33	Toledo Harbor Lighthouse	Ohio	2006			■		
34	Ludington North Breakwater Light	Michigan	2007		■			
35	Fourteen Foot Bank Lighthouse	Delaware	2007					■
36	Lubec Channel	Maine	2007					■
37	Bloody Point Bar Lighthouse	Maryland	2007					■
38	Hog Island Shoal Light	Rhode Island	2007					■
39	Ashtabula Harbor Light	Ohio	2007			■		
40	Sharp's Island Lighthouse	Maryland	2008					■
41	Menominee North Pierhead Light	Michigan	2008		■			
42	Oswego Harbor West Pierhead (Oswego Outer Harbor)	New York	2008		■			
43	Stepping Stones	New York	2008		■			
44	Charleston Light	South Carolina	2008	■				
45	Holland Harbor South Pierhead Light	Michigan	2008			■		
46	Charlevoix South Pierhead Light	Michigan	2008		■			
47	Duluth Harbor South Breakwater Inner	Minnesota	2009					■
48	New London Harbor Light	Connecticut	2009			■		
49	Chicago Harbor Lighthouse	Illinois	2009		■			
50	Whaleback Ledge	Maine	2009			■		
51	East Charity Shoal	New York	2009					■
52	Cleveland East Pierhead	Ohio	2009					■
53	Execution Rocks	New York	2009			■		
54	Detour Reef Light	Michigan	2010			■		



No.	Light Station	State	Year Transferred	Federal Transfer	Local Gov.	Non-Profit	State Gov.	Public Sale
55	Harbor Beach Lighthouse	Michigan	2010		■			
56	Frying Pan Shoals Light Tower	*	2010					■
57	Marcus Hook Rear Range Lighthouse	Delaware	2010					■
58	Borden Flats	Massachusetts	2010					■
59	Long Island Head Light	Massachusetts	2010	■				
60	Fort Gratiot Light Station	Michigan	2010		■			
61	Muskegon South Breakwater Light	Michigan	2010			■		
62	Muskegon South Pierhead Light	Michigan	2010			■		
63	Latimer Reef Light	New York	2010					■
64	West Bank Light	New York	2010					■
65	Currituck Beach Light Tower	North Carolina	2010			■		
66	Cape San Juan	Puerto Rico	2010			■		
67	Pigeon Point Light	California	2011				■	
68	Baker Island Light	Maine	2011	■				
69	Ram Island Ledge	Maine	2011					■
70	Manistee North Pierhead Light	Michigan	2011		■			
71	Great Beds Light	New Jersey	2011					■
72	Robbins Reef Light	New Jersey	2011			■		
73	Romer Shoal Light	New Jersey	2011					■
74	Buffalo South Harbor Light	New York	2011			■		
75	Conneaut West Breakwater Light	Ohio	2011					■
76	Fairport Harbor West Breakwater Light	Ohio	2011					■
77	Kenosha N Pierhead Light	Wisconsin	2011					■
78	Kewaunee Light	Wisconsin	2011		■			
79	Manitowoc Breakwater Light	Wisconsin	2011					■
80	Fowey Rocks Lighthouse	Florida	2012	■				
81	Moose Peak (Mistake Island) Lighthouse	Maine	2012					■
82	Diamond Shoals Light	North Carolina	2012					■
83	Grand Haven Entrance and Inner Lights	Michigan	2012		■			
84	South Haven South Pierhead Lighthouse	Michigan	2012			■		



No.	Light Station	State	Year Transferred	Federal Transfer	Local Gov.	Non-Profit	State Gov.	Public Sale
85	Ship John Shoal Light	New Jersey	2012					■
86	Huntington Harbor Light	New York	2012			■		
87	Little Gull Island Light	New York	2012					■
88	Cleveland Ledge Light	Massachusetts	2013					■
89	Orient Point Light	New York	2013					■
90	Brandywine Shoal Light	New Jersey	2013			■		
91	Liston Rear Range Light	Delaware	2013					■
92	Graves Light	Massachusetts	2013					■
93	Edgartown Light	Massachusetts	2013		■			
94	Straitsmouth	Massachusetts	2013		■			
95	Alpena Light	Michigan	2013			■		
96	Port Austin Reef Light	Michigan	2013			■		
97	Rock of Ages Light	Michigan	2013	■				
98	Manistique East Breakwater Lighthouse	Michigan	2013					■
99	Race Rock Light	New York	2013			■		
100	Milwaukee Breakwater Light	Wisconsin	2013			■		
101	Waugoshance Light	Michigan	2013			■		
102	St. Joseph Pierhead Light	Michigan	2013			■		
103	Munising Station, Front/Rear Range Lights	Michigan	2014	■				
104	New London Ledge Light	Connecticut	2014			■		
105	Boon Island Light	Maine	2014					■
106	Halfway Rock Light	Maine	2014					■
107	Baker Island Light	Massachusetts	2014			■		
108	Minot's Ledge Light	Massachusetts	2014					■
109	Round Island Passage Light	Michigan	2014					■
110	Punta Tuna Light	Puerto Rico	2014		■			
111	Sturgeon Bay North Pierhead Light	Wisconsin	2014					■
112	Stannard Rock Light	Michigan	2015			■		
113	Peck Ledge Light	Connecticut	2015					■



No.	Light Station	State	Year Transferred	Federal Transfer	Local Gov.	Non-Profit	State Gov.	Public Sale
114	Saybrook Breakwater Light	Connecticut	2015					■
115	Gay Head Light	Massachusetts	2015		■			
116	Miah Maull Shoal Light	New Jersey	2015					■
117	Greens Ledge Light	Connecticut	2016					■
118	Southwest Ledge (New Haven Breakwater) Light	Connecticut	2016					■
119	Stratford Shoal Light	Connecticut	2016			■		
120	Chesapeake Light Tower	*	2016					■
121	Butler Flats Light	Massachusetts	2016					■
122	Duxbury Pier Bug Light	Massachusetts	2016			■		
123	Gravelly Shoal Light	Michigan	2016					■
124	Ile Aux Galets Lighttower/Skillagal	Michigan	2016					■
125	Keweenaw Waterway Lower Entrance Light	Michigan	2016			■		
126	Spectacle Reef Light	Michigan	2016					■
127	White Shoal Lighthouse	Michigan	2016					■
128	Algoma Pierhead Light Tower	Wisconsin	2016		■			
129	Port Washington Breakwater Light	Wisconsin	2016		■			
130	Frankfort North Breakwater Light	Michigan	2017		■			
131	Penfield Reef Light	Connecticut	2017					■
132	North Manitou Shoal Lighthouse	Michigan	2017					■
133	Gray's Reef Light	Michigan	2017					■
134	Minneapolis Shoal Light	Michigan	2017					■
135	Detroit River Light	Michigan	2017					■
136	Poe Reef Light	Michigan	2017					■
137	Lansing Shoal Lighthouse	Michigan	2017					■
138	Fourteen Foot Shoal Lighthouse	Michigan	2017					■
139	Point Fermin Light	California	2018		■			
140	Craighill Channel Lower Range Light	Maryland	2018					■
141	Martin Reef Light	Michigan	2018					■
142	Superior Entry Light	Wisconsin	2019					■



No.	Light Station	State	Year Transferred	Federal Transfer	Local Gov.	Non-Profit	State Gov.	Public Sale
143	Ontonagon Breakwater Light	Michigan	2019					■
144	Poe Reef Light	Michigan	2019					■
145	Bass Harbor Light	Maine	2020	■				
146	Sand Key Light	Florida	2021					■
147	Alligator Reef Light	Florida	2021	■				
148	Carysfort Reef Light	Florida	2022					■
149	Sombrero Key Light	Florida	2022					■
150	American Shoal Light	Florida	2022					■
151	Hooper Island Light	Maryland	2022					■
Total of Light Stations Conveyed by Type:				10	25	43	3	70

*Lights with no state designation are located beyond local state jurisdiction.



Appendix C: Total Sales Proceeds 2021 – 2022

No.	Light Station	State *	Year Transferred	Proceeds
1	Newport News Middle Ground Light	Virginia	2005	\$31,000
2	Smith Point Lighthouse	Virginia	2005	\$170,000
3	Thimble Shoal Lighthouse	Virginia	2005	\$65,000
4	Goose Rocks Light Station	Maine	2006	\$27,000
5	Baltimore Lighthouse	Maryland	2006	\$260,000
6	Sandy Point Shoal Lighthouse	Maryland	2006	\$250,000
7	Wolf Trap Lighthouse	Virginia	2006	\$75,000
8	Fourteen Foot Bank Lighthouse	Delaware	2007	\$200,000
9	Lubec Channel	Maine	2007	\$46,000
10	Bloody Point Bar Lighthouse	Maryland	2007	\$100,000
11	Hog Island Shoal Light	Rhode Island	2007	\$165,000
12	Sharp's Island Lighthouse	Maryland	2008	\$80,000
13	Duluth Harbor South Breakwater Inner	Minnesota	2009	\$31,000
14	East Charity Shoal	New York	2009	\$25,501
15	Cleveland East Pierhead	Ohio	2009	\$10,000
16	Marcus Hook Rear Range Lighthouse	Delaware	2010	\$150,000
17	Frying Pan Shoals Light Tower	*	2010	\$85,000
18	Borden Flats	Massachusetts	2010	\$56,569
19	Cleveland Ledge Light	Massachusetts	2010	\$190,000
20	Latimer Reef Light	New York	2010	\$225,000
21	West Bank Light	New York	2010	\$195,000
22	Ram Island Ledge	Maine	2011	\$190,000
23	Great Beds Light	New Jersey	2011	\$90,000
24	Romer Shoal Light	New Jersey	2011	\$90,000
25	Conneaut West Breakwater Light	Ohio	2011	\$46,000
26	Fairport Harbor West Breakwater Light	Ohio	2011	\$71,010
27	Kenosha N Pierhead Light	Wisconsin	2011	\$17,000



No.	Light Station	State *	Year Transferred	Proceeds
28	Manitowoc Breakwater Light	Wisconsin	2011	\$30,000
29	Diamond Shoals Light	North Carolina	2012	\$20,000
30	Moose Peak (Mistake Island) Lighthouse	Maine	2012	\$93,500
31	Ship John Shoal Light	New Jersey	2012	\$60,200
32	Little Gull Island Light	New York	2012	\$381,000
33	Orient Point Light	New York	2013	\$252,000
34	Liston Rear Range Light	Delaware	2013	\$22,003
35	Graves Light	Massachusetts	2013	\$933,888
36	Manistique East Breakwater Lighthouse	Michigan	2013	\$15,000
37	Boon Island Light	Maine	2014	\$78,000
38	Halfway Rock Light	Maine	2014	\$283,000
39	Minot's Ledge Light	Massachusetts	2014	\$222,000
40	Round Island Passage Light	Michigan	2014	\$65,500
41	Sturgeon Bay North Pierhead Light	Wisconsin	2014	\$48,500
42	Peck Ledge Light	Connecticut	2015	\$235,000
43	Saybrook Breakwater Light	Connecticut	2015	\$290,000
44	Miah Maul Shoal Light	New Jersey	2015	\$90,000
45	Greens Ledge Light	Connecticut	2016	\$150,000
46	Southwest Ledge (New Haven Breakwater) Light	Connecticut	2016	\$180,002
47	Chesapeake Light Tower	*	2016	\$215,000
48	Butler Flats Light	Massachusetts	2016	\$80,000
49	Gravelly Shoal Light	Michigan	2016	\$16,000
50	Ile Aux Galets Lighttower/Skillagal	Michigan	2016	\$23,250
51	Spectacle Reef Light	Michigan	2016	\$43,575
52	White Shoal Lighthouse	Michigan	2016	\$110,009
53	Penfield Reef Light	Connecticut	2017	\$282,345
54	North Manitou Shoal Lighthouse	Michigan	2017	\$73,000
55	Gray's Reef Light	Michigan	2017	\$52,777
56	Minneapolis Shoal Light	Michigan	2017	\$28,000
57	Detroit River Light	Michigan	2017	\$188,500
58	Poe Reef Light	Michigan	2017	\$112,111



No.	Light Station	State *	Year Transferred	Proceeds
59	Lansing Shoal Lighthouse	Michigan	2017	\$26,000
60	Fourteen Foot Shoal Lighthouse	California	2018	\$133,333
61	Martin Reef Light	Maryland	2018	\$52,777
62	Craighill Channel Lower Range Light	Maryland	2018	\$96,000
63	Superior Entry Light	Wisconsin	2019	\$159,000
64	Ontonagon Breakwater Light	Michigan	2019	\$7,500
65	Poe Reef Light	Michigan	2019	\$97,000
66	Sand Key Light	Florida	2021	\$83,000
67	American Shoal Light	Florida	2022	\$860,000
68	Carysfort Light	Florida	2022	\$415,000
69	Sombrero Key Light	Florida	2022	\$575,000
70	Hooper Island Light	Maryland	2022	\$192,000
Grand Total Public Sales Proceeds:				\$10,311,850

*Lights with no state designation are located beyond local state jurisdiction.



Appendix D: Light Transfers via Special Legislation and Property Act

Light Station	State *	Year Transferred	Property Act	Special Legislation
Point Retreat Light	Alaska	2003		■
Cape Decision Light	Alaska	2004		■
Five Fingers Island Light	Alaska	2004		■
Sentinel Island Light	Alaska	2006		■
Point Pinos Light	California	2006		■
Bloody Point Bar Lighthouse	Maryland	2007	■	
Frying Pan Shoals Light Tower	*	2010	■	
Chesapeake Light Tower	*	2016		■
Total:			2	6

*Lights with no state designation are located beyond local state jurisdiction.



Appendix E: Light Station Reconveyances as of 2022

Light Station	State	Original Conveyance	Reconveyance
Craighill Channel Lower Range Light	Maryland	2005 (Nonprofit)	2018 (Public Sale)
Hooper Island Light	Maryland	2009 (Nonprofit)	2022 (Public Sale)



Appendix F: Photo Credits

Cover and Page 3 — Bass Harbor Light Station

Light: Bass Harbor Light Station

Credit: Barbara Salfity (GSA)

Page 1 — Keweenaw Waterway Lower Entrance Light

Light: Keweenaw Waterway Lower Entrance Light

Credit: GSA (<https://gsaauctions.gov/gsaauctions/aucdsclnk?sl=CHICA123003001>)

Inner Cover — Superior Entry Lighthouse

Light: Superior Entry Lighthouse

Credit: Randen Pederson

License: <https://creativecommons.org/licenses/by-sa/2.0/legalcode>

Table of Contents — Sombrero Key Light

Light: Sombrero Key Light

Credit: Eric Stavely (GSA)

Page 4 and Page 11 — Hooper Island Lighthouse

Light: Hooper Island Lighthouse

Credit: GSA (<https://gsaauctions.gov/gsaauctions/aucdsclnk?sl=PEACH422007001>)

Page 8 — Carysfort Reef Lighthouse

Light: Carysfort Reef Lighthouse

Credit: Eric Stavely (GSA)

Page 9 — American Shoal Lighthouse

Light: American Shoal Lighthouse

Credit: Eric Stavely (GSA)

Page 10 — Craighill Lighthouse

Light: Craighill Lighthouse

Credit: GSA (https://commons.wikimedia.org/wiki/File:CRAIGHILL_CH_FRONT_LOWER_72_500.jpg)