

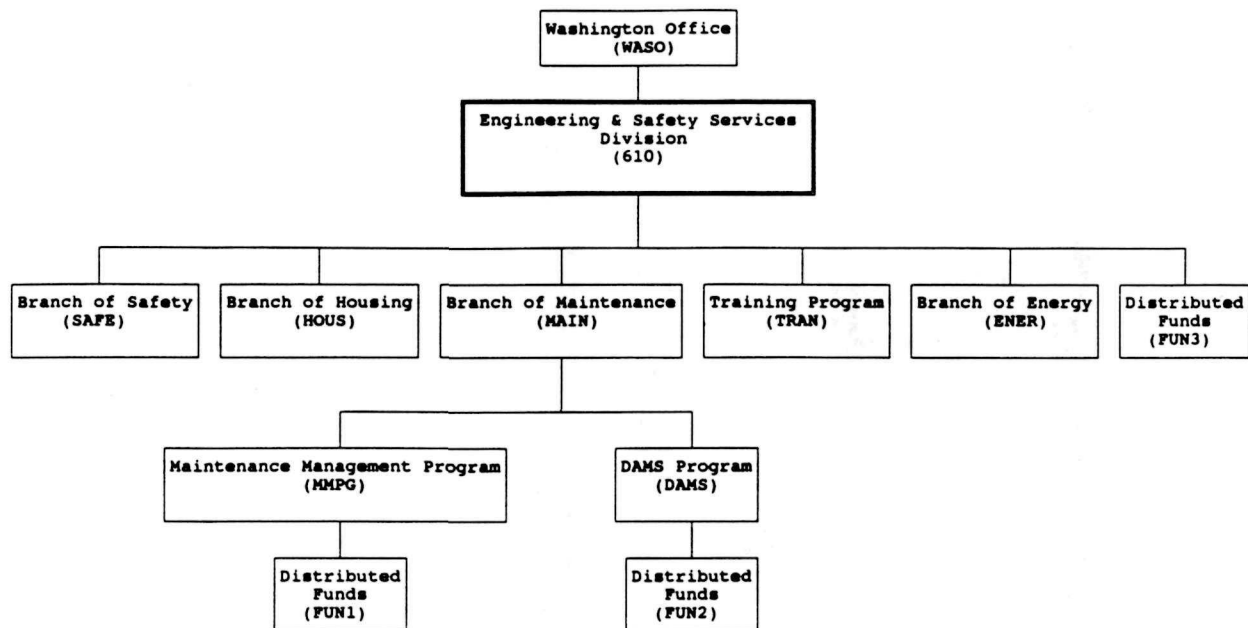


Maintenance Management

WORK PROGRAM - FY91

OCT 3 1990

**MAINTENANCE MANAGEMENT
MANAGEMENT UNIT ORGANIZATIONAL CHART**



MANAGEMENT UNITS

<u>Code</u>	<u>Name</u>
WASO	WASHINGTON OFFICE
0610	ENGINEERING & SAFETY SER. DIV.
MAIN	BRANCH OF MAINTENANCE
MMPG	MAINTENANCE MANAGEMENT PROGRAM
DAMS	DAMS PROGRAM
TRAN	MAINTENANCE TRAINING PROGRAM
HOUS	HOUSING PROGRAM
ENER	ENERGY PROGRAM
SAFE	SAFETY DIVISION

ACTIVITY LISTING

<u>CODE</u>	<u>DESCRIPTION</u>	<u>WORK UNIT</u>
8710	SPECIAL PROJECT	PER HRS
8991	TECHNICAL SUPPORT	PER HRS
8992	BRIEFS/PRESENTATIONS	PER HRS
8993	CLERICAL SUPPORT	PER HRS
9111	GEN OFFICE-CLERICAL	PER HRS
9112	XEROXING	PER HRS
9113	MESSENGER/ERRANDS	PER HRS
9121	PROGRAM MANAGEMENT	PER HRS
9150	MEETINGS	PER HRS
9160	TRAVEL	PER HRS
9190	GEN ADMINISTRATION	PER HRS
9210	PAID LEAVE	PER HRS
9220	UNPAID LEAVE	PER HRS
9230	EMPLOYEE TRAINING	PER HRS
9311	SUPPORT FUNDS-OTHER	DOLLAR
9312	REG. SUPPORT FUNDS	DOLLAR
9320	CONTRACTED WORK	CONTRACT
9330	EQUIP REPLACEMENT	ITEM

LABOR CODES

<u>Code</u>	<u>Name</u>
1136	K. Brown
1171	D. Compton
1133	C. Davidson
1003	B. Davis
1123	S. Drumming
1111	J. Duran
1004	H. Hagen
1001	D. Herring
1221	B. Fischer
1113	L. Furman
1002	J. Gingles
1122	D. Hartman
1114	C. Karpowicz
1302	T. Krittrell
1132	C. Kurtz
1222	D. Reilly
1305	M. Scott
1124	R. Shireman
1135	B. Shumate
1306	N. Smith
1112	P. Smith
1441	G. Thompson
1304	A. Uzzell
1301	V. Washington

MATERIAL CODES

<u>Code</u>	<u>Description</u>
9900	DOLLARS
9910	CONTRACT DOLLAR
9920	TRAINING DOLLAR
9930	TRAVEL DOLLAR
9931	O/S TRAV DOLLAR
9998	REPAIR DOLLAR
9999	SUPPLY DOLLAR

PREMIUM (OVERTIME) CODES

<u>Code</u>	<u>Description</u>
040	EARNED COMP TIME
051	Holiday-Worked
110	Overtime-Regular

TYPE CODES:

<u>CODE</u>	<u>NAME</u>
A	ADMINISTRATIVE
D	DIVISION (610)
E	ENERGY PROGRAMS
H	HOUSING PROGRAMS
M	MAINTENANCE PROGRAMS
P	PARK AREAS
R	REGIONS
S	SAFETY PROGRAMS
T	TRAINING PROGRAMS
W	WASHINGTON DIVISIONS

LOCATION LIST

<u>CODE</u>	<u>TYPE</u>	<u>NAME</u>
ANNUAL	A	ANNUAL LEAVE
ECOMP	A	EARNED COMP - TIME
SICK	A	SICK LEAVE
UCOMP	A	USED COMP - TIME
610	D	ENGINEERING & SAFETY DIV
611	D	OPERATION ENGINEERING (DSC)
9999	D	MISCELLANEOUS WORK CAT.
<u>ENERGY</u>	<u>E</u>	<u>BRANCH OF ENERGY</u>
<u>HOUS</u>	<u>H</u>	<u>BRANCH OF HOUSING</u>
DAMS	M	DAMS PROGRAM
DWR	M	DAILY WORK REPORT PROGRAM
ICAP	M	INVEN/COND ASSESS PROGRAM
MAIN	M	BRANCH OF MAINTENANCE
MMADM	M	MM ADMINISTRATION
MMCOORD	M	MM COORDINATORS MEETING
<u>MMP</u>	<u>M</u>	<u>MAINTENANCE MANAGEMENT</u>
HAZARD	S	HAZARDOUS WASTE PROGRAM
<u>SAFETY</u>	<u>S</u>	<u>BRANCH OF SAFETY</u>
TRAN	T	MAINTENANCE TRAINING PROGRAM
FMDP	T	FAC MGMT DEVELOP PROGRAM
MFLM	T	MAIN FIRST LINE MANAGERS
MUCM	T	MAIN UPDATE TRAIN FOR COM
ATC	T	Albright Training CTR
<u>HFTC</u>	<u>T</u>	<u>Happers Ferry Train CTR</u>

001	W	Director
002	W	Deputy Director
010	W	EEO
022	W	Policy
023	W	International Affairs
040	W	Public Affairs
180	W	Legislation
190	W	Congress Liaison
199	W	Dep Dir Budget/Admin
200	W	Ass Dir Personnel
230	W	Administrative Division
240	W	Personnel Division
270	W	Information/Data Sys Div
280	W	Employee Develop Division
300	W	Comptroller
310	W	Finance Division
330	W	Budget Division
400	W	Ass Dir Culture Resources
408	W	Curatorial Services Div
422	W	Park Hist Architecture
470	W	Ass Dir National Resources
472	W	GIS
500	W	Ass. Director, Operations
600	W	Ass Dir Visitor Services
650	W	Ranger Activities Div.
660	W	Land Resource Division
680	W	Concessions Division
700	W	Ass Dir Interpretation
710	W	Interpretation Division
760	W	Ass Dir Planning/Develop
BLM	W	Bur of Land Management
DOI	W	Dept. of the Interior
DSC	W	Denver Service Center
FLHW	W	Federal Lands Highway
<u>WILL</u>	<u>W</u>	<u>Williamsport Pres Tr CTR</u>
ARO	R	Alaska Region
MAR	R	Mid-Atlantic Region
MWAC	R	MWR Archeological Center
MWR	R	Mid-West Region
NAR	R	North Atlantic Region
NCR	R	National Capital Region
PNWR	R	Pacific Northwest Region
RMR	R	Rocky Mountain Region
SCPC	R	SER Cult Res Pres Center
SEAC	R	SER Archeological Center
SER	R	Southeast Region
SOCU	R	SWR Cultural Resource CTR
SWR	R	Southwest Region
WEAC	R	WRO - Archo/Conserv CTR
<u>WRO</u>	<u>R</u>	<u>Western Region</u>

ABLI	P	Abraham Lincoln Bith. NHS
ACAD	P	Acadia NP
ADAM	P	Adams NHS
AGFO	P	Agate Fossil Beds NM
ALFL	P	Alibates Flint Quarries
ALPO	P	Allegheny Port. Rail. NHS
AMIS	P	Amistad RA
ANDE	P	Andersonville NHS
ANJO	P	Andrew Johnson NHS
ANTI	P	Antietam NB
APCO	P	Appomattox Court H. NHS
APIS	P	Apostle Islands N Lake.
ARCH	P	Arches NP
ARHO	P	Arlington House-R.E. Lee
ARPO	P	Arkansas Post NM
ASIS	P	Assateague Island NS
AZRU	P	Aztec Ruins NM
BADL	P	Badlands NP
BAND	P	Bandelier NP
BELA	P	Bering Land Bridge N Pres
BEOL	P	Bent's Old Fort NHS
BIBE	P	Big Bend NP
BICA	P	Bighorn Canyon NRA
BICY	P	Big Cypress Nat Pres
BIHO	P	Big Hole NB
BISC	P	Biscayne NP
BISO	P	Big South Fork NR
BITH	P	Big Thicket Nat Pres
BLCA	P	Black Canyon/Gunnison NM
BLRI	P	Blue Ridge Parkway
BLUE	P	Bluestone NSR
BOAF	P	Boston African-Amer NHS
BRCA	P	Bryce Canyon NP
BUFF	P	Buffalo NR
BUIS	P	Buck Island Reef NM
CABR	P	Cabrillo NM
CACA	P	Carlsbad Caverns NP
CACH	P	Canyon De Chelly NM
CACL	P	Castle Clinton NM
CACO	P	Cape Cod NS
CAGR	P	Casa Grande NM
CAHA	P	Cape Hatteras NS
CAKR	P	Cape Krusenstern NM
CALO	P	Cape Lookout NS

CANA	P	Canaveral NS
CANY	P	Canyonlands NP
CARE	P	Capitol Reef NP
CARL	P	Carl Sandburg Home NHS
CASA	P	Castillo De San Marcos NM
CATO	P	Catoctin NP
CAVO	P	Capulin Volcano NM
CEBR	P	Cedar Breaks NM
CHAM	P	Chamizal N MEM
CHAT	P	Chattahoochee River NRA
CHCH	P	Chickamauga/Chattanooga
CHCU	P	Chaco Culture NHP
CHIC	P	Chickasaw NRA
CHIR	P	Chiricahua NM
CHIS	P	Channel Island NP
CHOH	P	Chesapeake/Ohio Canal NHS
CHRI	P	Christianssted NHS
CLBA	P	Clara Barton NHS
CODA	P	Coulee Dam NRA
COLM	P	Colorado NM
COLO	P	Colonial NHP
CORO	P	Coronado NM
COSW	P	Congaree Swamp NM
COWP	P	Cowpens NB
CRLA	P	Crater Lake NP
CRMO	P	Craters of the Moon NM
CUGA	P	Cumberland Gap NHP
CUIS	P	Cumberland Island NS
CURE	P	Curecanti NRA
CUST	P	Custer Battlefield NM
CUVA	P	Cuyahoga Valley NRA
DENA	P	Denali NP and PRESERVE
DEPO	P	Devils Postpile NM
DESO	P	De Soto NM
DETO	P	Devils Tower NM
EBLA	P	Ebey's Landing NHR
EDAL	P	Edgar Allan Poe NHS
EDIS	P	Edison NHS
EFMO	P	El Morro NM
ELMA	P	El Malpais NM
ELRO	P	Eleanor Roosevelt NHS
EUON	P	Eugene O'Neill NHS
EVER	P	Everglades NP

FEHA	P	Federal Hall NM
FIIS	P	Fire Island NS
FLFO	P	Florissant Fossil Beds NM
FOBO	P	Fort Bowie NHS
FOBU	P	Fossil Butte NHS
FOCA	P	Fort Caroline N MEM
FOCL	P	Fort Clatsop N MEM
FODA	P	Fort Davis NHS
FODO	P	Fort Donelson NB
FOJE	P	Fort Jefferson NM
FOLA	P	Fort Laramie NHS
FOLS	P	Fort Larned NHS
FOMA	P	Fort Matanzas NM
FOMC	P	Fort McHenry NM
FONE	P	Fort Necessity NB
FOPO	P	Fort Point NHS
FOPU	P	Fort Pulaski NM
FORA	P	Fort Raleigh NHS
FOSC	P	Fort Scott NHS
FOSM	P	Fort Smith NHS
FOST	P	Fort Stanwix NM
FOSU	P	Fort Sumter NM
FOTH	P	Ford's Theatre NHS
FOUN	P	Fort Union NM
FOUS	P	Fort Union Trading Post
FOVA	P	Fort Vancouver NHS
FOWA	P	Fort Washington Park
FRDO	P	Frederick Douglass NHS
FRHI	P	Friendship Hill NHS
FRLA	P	Frederick Law Olmsted NHS
FRSP	P	Fredericksburg/Spotsylvan.
GAAR	P	Gates of the Arctic NP
GATE	P	Gateway NRA
GAUL	P	Gauley NRA
GEGR	P	General Grant NM
GERO	P	George Rogers Clark NHP
GETT	P	Gettysburg NMP
GEWA	P	George Washington Birth.
GICL	P	Gila Cliffs Dwellings NM
GLAC	P	Glacier NP
GLBA	P	Glacier Bay NP & PRES
GLCA	P	Glen Canyon NRA
GOGA	P	Golden Gate NRA
GOSP	P	Golden Spike NHS

GRBA	P	Great Basin NP
GRCA	P	Grand Canyon NP
GREE	P	Greenbelt Park
GRPO	P	Grand Portage NM
GRSA	P	Great Sand Dunes NM
GRSM	P	Great Smoky Mountains NP
GRTE	P	Grand Teton NP
GUCO	P	Guilford Courthouse NMP
GUIS	P	Gulf Islands NS
GUMO	P	Guadalupe Mountains NP
GWMP	P	George Washington Mem P
HAFE	P	Harpers Ferry NHP
HAFO	P	Hagerman Fossil Beds NM
HAGR	P	Hamilton Grange N MEM
HALE	P	Haleakala NP
HAMP	P	Hampton NHS
HAVO	P	Hawaii Volcanoes NP
HEHO	P	Herbert Hoover NHS
HOBE	P	Horseshoe Bend NMP
HOFR	P	Home of Frank D Roose NHS
HOFU	P	Hopewell Furnace NHS
HOME	P	Homestead NM of America
HOSP	P	Hot Springs NP
HOVE	P	Hovenweep NM
HSTR	P	Harry S Truman NHS
HUTR	P	Hubbell Trading Post NHS
INDE	P	Independence NHP
INDU	P	Indiana Dunes NL
ISRO	P	Isle Royale NP
JAGA	P	James A Garfield NHS
JECA	P	Jewel Cave NM
JEFF	P	Jefferson Nat Expan Mem
JELA	P	Jean Lafitte NHP and Pres
JICA	P	Jimmy Carter NHS
JODA	P	John Day Fossil Beds NM
JODR	P	John D Rock Jr Mem Parkw
JOFI	P	John F Kennedy NHS
JOFK	P	John F Kennedy Center
JOFL	P	Johnstown Flood NM
JOMU	P	John Muir NHS
JOTR	P	Joshua Tree NM

KAHO	P	Kaloko-Honokohau NHP
KALA	P	Kalaupapa NHP
KATM	P	Katmai NP & Preserve
KEFJ	P	Kenai Fjords NP
KEMO	P	Kennesaw Mountain NBP
KICA	P	Kings Canyon NP
KIMO	P	Kings Mountain NMP
KLGO	P	Klondike Gold Rush NHP
KNRI	P	Knife River Ind VillNHS
KOVA	P	Kobuk Valley NP
LABE	P	Lava Beds NM
LACH	P	Lake Chelan NRA
LACL	P	Lake Clark NP & PRESERVE
LAME	P	Lake Mead NRA
LAMR	P	Lake Meredith Rec Area
LIBO	P	Lincoln Boyhood Home NM
LIHO	P	Lincoln Home NHS
LONG	P	Longfellow NHS
LOSA	P	Lower St Croix NSR
LOWE	P	Lowell NHP
LYJO	P	Lyndon B Johnson NHP
MACA	P	Mammoth Cave NP
MALU	P	Martin Luther King NHS
MALW	P	Maggie L Walker NHS
MANA	P	Manassas NBP
MASI	P	Manhattan Sites
MAVA	P	Martin Van Buren NHS
MEVE	P	Mesa Verde NP
MIMA	P	Minute Man HNP
MISS	P	Mississippi NR & NRA
MOCA	P	Montezuma Castle NM
MOCI	P	Mound City Group NM
MOCR	P	Moores Creek NB
MONO	P	Monocacy NB
MORA	P	Mount Rainier NP
MORR	P	Morristown NHP
MORU	P	Mount Rushmore NM
MUWO	P	Muir Woods NM
NABR	P	Natural Bridges NM
NACC	P	NCP - Central
NACE	P	NCP - East
NAHP	P	NARO - Historic Pres CTR
NAPA	P	NP of America Samoa
NATC	P	Natchez NHP

NATR	P	Natchez Trace Parkway
NAVA	P	Navajo NM
NCRW	P	White House
NEPE	P	Nez Perce NHP
NERI	P	New River Gorge NR
NISI	P	Ninety Six NHS
NOAA	P	Northwest Areas
NOAT	P	Noatak N Preserve
NOCA	P	North Cascades NP
OBRI	P	Obed Wild & Scenic River
OCMU	P	Ocmulgee NM
OLYM	P	Olympic NP
ORCA	P	Oregon Caves NM
OREG	P	Oregon NHT
ORPI	P	Oregon Pipe Cactus NM
OZAR	P	Ozark NSR
PAAL	P	Palo Alto Battlefield NHS
PAAV	P	Pennsylvania Ave NHS
PAIS	P	Padre Island NS
PECO	P	Pecos NM
PEFO	P	Petrified Forest NP
PERI	P	Pes Ridge NMP
PETE	P	Portersburg NB
PEVI	P	Perry's Vic/Int Peace MEM
PIMA	P	Hohokam Pima NM
PINN	P	Pinnacles NM
PIPE	P	Pipestone NM
PIRO	P	Pictured Rocks NLS
PISC	P	Piscataway Park
PISP	P	Pipe Springs NM
POPO	P	Poverty Point NM
PORE	P	Point Reyes NS
PRWI	P	Prince William Fores Park
PUHE	P	Puukohola Heiau NHS
PUHO	P	Puuhonua O Honaunau NHP
RABR	P	Rainbow Bridge NM
REDW	P	Redwoods NP
RICH	P	Richmond NBP
ROCR	P	Rock Creek Park
ROLA	P	Ross Lake NRA
ROMO	P	Rocky Mountain NP
ROWI	P	Roger Williams NM
RUCA	P	Russell Cave NM

SAAN	P	San Antonio Missions NHP
SACN	P	Saint Croix NSR
SACR	P	Saint Croix Island INHS
SAFR	P	San Francisco Mar NHP
SAGA	P	Saint-Gaudens NHS
SAGU	P	Saguaro NM
SAHI	P	Sagamore HillNHS
SAIR	P	Saugus Iron Works NHS
SAJH	P	San Juan Island NHP
SAJU	P	San Juan NHS
SALI	P	Salinas Pueblo Miss NM
SAMA	P	Salem Maritime NHS
SAMO	P	Santa Monica Mountain NRA
SARA	P	Saratoga NHP
SCBL	P	Scotts BliffNM
SEQU	P	Sequoia NP
SHEN	P	Shenandoah NP
SHIL	P	Shiloh NMP
SITK	P	Sitka NHP
SLBE	P	Sleeping Bear Dunes NLS
SOAR	P	Southwestern Arizona Grou
SPAR	P	Springfield Armory NHS
STEA	P	Steamtown NHS
STLI	P	Statue of Liberty NM
STRI	P	Stones River NB
SUCR	P	Sunset Crater NM
THKO	P	Thaddeus Kosciusko NM
THRB	P	Theodore Roosevelt Birth NHS
THRI	P	Theodore Roosevelt Inaug NHS
THRO	P	Theodore Roosevelt NP
THST	P	Thomas Stone NHS
TICA	P	Timpanogos Cave NM
TIMU	P	Timucuan Ecolog Hist Pres
TONT	P	Tonto NM
TUIN	P	Tuskegee Institute NHS
TUMA	P	Tumacacori NM
TUZI	P	Tuzigoot NM
UPDE	P	Upper Delaware Scenic RR
USAR	P	U.S.S. Arizona Memorial
VAFO	P	Valley Forge NHP
VAMA	P	Vanderbilt Mansion NHS
VICK	P	Vicksburg NMP
VIIS	P	Virgin Islands NP
VOYA	P	Voyageurs NP

WACA	P	Walnut Canyon NM
WAPA	P	War in the Pacific NHP
WHIS	P	Whiskeytown NRA
WHMI	P	Whitman Missions NHS
WHS	P	White Sands NM
WICA	P	Wind Cave NP
WICR	P	Wilson's Creek NB
WIHO	P	William Howard Taft NHS
WORI	P	Women's Rights NHP
WOTR	P	Wolf Trap Farm Park
WRBR	P	Wright Brothers NM
WRST	P	Wrangell-ST Elias NP & P
WUPA	P	Wupatki NM
YELL	P	Yellowstone NP
YOSE	P	Yosemite NP
YUCH	P	Yukon-Charley Rivers N Pr
YUHO	P	Yucca House NM
ZION	P	Zion NP
<u>ZUCI</u>	<u>P</u>	<u>Zuni-Cibola NHP</u>

**MAINTENANCE MANAGEMENT
ACTIVITY LISTING**

The following activities are to be used by Facility/Project/Program Managers.

<u>Code</u>	<u>Name</u>	<u>WORK UNIT</u>
8710	SPECIAL PROJECTS	PER HRS
	Is used to identify and track all "UNPLANNED" special requested work which is over and above routine daily work requirements. A WORK REQUEST FORM must be completed for any work which exceeds 8 person hours to complete or any requested work which extends over more than one person day.	
8991	TECHNICAL SUPPORT	PER HRS
	Is used to identify and track all "PLANNED" technical support / assistance to parks, regions, other divisions, or to specific Programs and or project, i.e., telephone coordination, development NPS policy / guidelines, review documents, provide recommendations/guidance, etc.	
8992	BRIEFINGS/PRESENTATIONS	PER HRS
	Is used to identify and track the number of briefings and/or presentations that are prepared.	
9121	PROGRAM MANAGEMENT	PER HRS
	Is used to identify and track all work required to manage a specific program, i.e., program coordination, contract administration, schedules, drafting memorandums, letters, and budgets (this activity is primarily used by a "program managers", however a project manager or other employee may use this activity).	
9160	TRAVEL	PER HRS
	Is used to identify and track the hours (travel time only) and the dollars expended during official employee travel. This activity is also used to plan/track travel costs to bring field personnel in to the Washington office to assist in program development (when reporting cost incurred by field personnel to this activity used the appropriate location code "O/STRAV" and the material resource code "9931").	

The following activities are to be used by Clerical Employees.

<u>Code</u>	<u>Name</u>	<u>WORK UNIT</u>
8993	SUPPORT TO OTHERS	PER HRS
	Is used by the clerical staff to identify and track general office work, i.e., word processing, answering telephones, and maintaining office files for other branches, divisions and/or agencies..	
9111	GENERAL OFFICE - CLERICAL	PER HRS
	Is used by the clerical staff to identify and track general office work, i.e., word processing, answering telephones, and maintaining office files.	
9112	XEROXING	PER HRS
	Is used by the clerical staff to identify and track the total number of person hours devoted to significant/major xeroxing efforts which exceeds .5 person hours in length (for xeroxing efforts less than .5 person hours report under work activity "9911 General Office - Clerical".	
9113	MESSENGER/ERRANDS	PER HRS
	Is used by the clerical staff to identify and track the number of hours required to run errands, i.e., hand carrying travel authorizations, requisitions, pick-up of documents, etc.	

The following activities are to used by all employees.

<u>Code</u>	<u>Name</u>	<u>WORK UNIT</u>
9150	MEETINGS	PER HRS
	Is used to identify and track an employees time spent attending meetings that are greater than .5 person hours in length.	
9190	GENERAL ADMINISTRATION	PER HRS
	Is used to identify and track all work and dollars associated with general administrative responsibilities, i.e., personnel actions, performance appraisals, and MMreporting. This activity is also used to plan and track the dollars expended for small purchasing of supplies and for equipment repairs (reported by the person initiating the requisition as material costs as: 9999 Supply Dollars and 9998 Repair Dollars. Attached the GREEN requisition copy to the DWR).	
9210	PAID LEAVE	PER HRS
	Is used to identify and track all hours earned/used annual, sick, military, administrated and shared leave. This activity is also used to track used compensatory "COMP-TIME" leave (only). When using this activity report the specific type of leave using the appropriate location code "UCOMP".	
9220	UNPAID LEAVE	PER HRS
	Is used to identify and track the number of person hours taken as unpaid leave. This activity is also used to track EARN compensatory "COMP-TIME" leave (only). When using this activity report the specific type of leave using the appropriate premium code "040" location code "ECOMP"	
9230	EMPLOYEE TRAINING	PER HRS
	Is used to identify and track the total number of person hours devoted to employee development.	

The following activities are to used to plan and track program information.

<u>Code</u>	<u>Name</u>	<u>WORK UNIT</u>
9300	PROGRAM/BUDGET ACTIVITIES:*	
9310	SPECIAL ACTIVITIES*	
9311	REGIONAL SUPPORT FUNDS*	DOLLAR
	Is used to identify and track the total number of dollars for regional support for Maintenance programs.	
9312	FUNDS - OTHER AGENCY*	DOLLAR
	Is used to identify and track the total number of dollars provided to OTHER AGENCIES (non NPS) for technical assistance of NPS programs.	
9330	EQUIPMENT REPLACEMENT*	ITEM
	Is used to identify and track the number of equipment replaced and all cost associated in the planned purchase/replacement of office equipment, i.e., computers, printers, calculators, etc. Dollars are reported using the material resource code "9900 DOLLAR".	
9320	CONTRACTED WORK*	CONTRACTS
	Is used to identify and track planned contract work (dollars) for services to support program requirements. The purpose of contracting is to procure services and/or products which are required to accomplishing program requirements, exceeds the current available labor resources. Dollars are reported using the material resource code "9900 DOLLAR".	

NOTE: * INDICATES NON STANDARD WORK ACTIVITIES

