



DENVER SERVICE CENTER

NATIONAL PARK SERVICE

900/127048

DENVER SERVICE CENTER

TECHNICAL INFORMATION CENTER
DENVER SERVICE CENTER
NATIONAL PARK SERVICE

NATIONAL PARK SERVICE

The National Park Service is the federal agency responsible for administering and maintaining parks, monuments, parkways, seashores, and recreation areas that comprise our country's national park system. Established in 1916, the Park Service has grown from a small cadre of dedicated professionals into a major service organization with wide-ranging responsibilities. The agency is organized on a decentralized basis, with the majority of the staff stationed in the parks; in addition, there are ten regional offices, two professional service centers, and a headquarters office in Washington, D.C.

Management of the national park system is guided by the mission set forth in legislation:

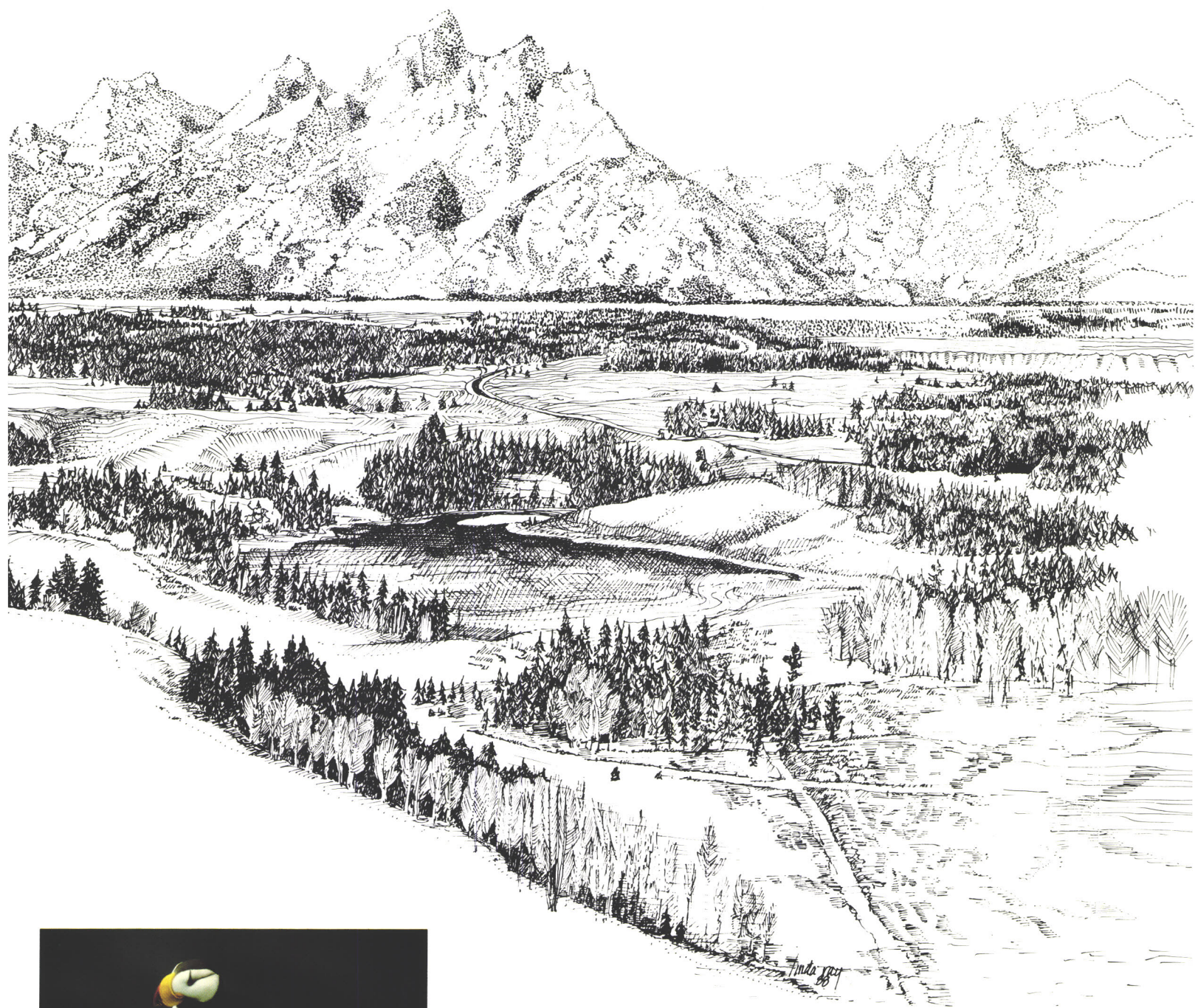
To conserve the scenery and the natural and historic objects and the wildlife therein and to provide for the enjoyment of the same in such manner and by such means as will leave them unimpaired for the enjoyment of future generations.

The authorization of activities shall be construed and the protection, management, and administration of these areas shall be conducted in light of the high value and integrity of the National Park System and shall not be exercised in derogation of the values and purposes for which these various areas have been established, except as may have been or shall be directly and specifically provided by Congress.

To ensure that this mission is accomplished, the Park Service draws on a wide range of talents. Park personnel skilled in resource management, education, and visitor service preserve and protect significant resources and settings and offer programs and services to make park visits both educational and fun. Professionals in the regions and service centers support park activities by developing long-range plans, completing environmental evaluations, determining preservation methods for cultural features, planning and designing visitor facilities, and developing interpretive programs and media. The results of these efforts are visible throughout the national park system today – a system that attracts millions of visitors each year and is renowned both for the conservation ethic it embodies and for the excellence of its services to the public.



Lincoln Home National Historic Site



Puffin, Kenai Fjords National Park

Ranger with Visitor,
Buck Island Reef
National Monument



Great Smoky Mountains
National Park



DENVER SERVICE CENTER

The Denver Service Center is one of the two offices dedicated solely to providing professional services to the national parks. Its early role of coordinating and reviewing park facility designs has been expanded over the years, and it is now the National Park Service's primary center for long-range planning, environmental analysis, and facility design and construction. A large professional staff is currently responsible for planning, design, construction, and historic preservation projects ranging from wilderness studies in Alaska to the restoration of the gunboat *Cairo*.

The Denver Service Center is a collaborative professional office essential to the operation of the National Park Service. Close associations are maintained with the parks and regional offices to ensure that plans and designs reflect the Park Service mission, address identified resource concerns, and meet changing visitor needs and requirements. Consistent with the ethic of the National Park Service, the Denver Service Center is dedicated to developing plans and designs that protect natural and cultural resources, conserve energy, use nontoxic materials, are efficient to maintain, are harmonious with the aesthetic qualities of the parks, and meet the highest standards of visitor satisfaction.

The Service Center is organized into "teams" that provide professional support to three or more regional offices and their respective parks. Applying the principles of project management, these multidisciplinary teams carry projects from inception through planning and design to final implementation and post-construction evaluation. Much of the Service Center work is accomplished by private firms; virtually all of the construction program is done through contract, and a large portion of the design program is completed by private architectural and engineering firms. DSC personnel review and supervise work contracted to private firms.

The Denver Service Center is widely known and respected for its contributions to park planning and its cooperation with others in the field. The majority of the professional services training in the National Park Service in planning, design, and construction is accomplished by the Denver Service Center. DSC professionals also share ideas with local, regional, and state agencies, concessioners, and private foundations, and they are becoming experienced leaders for the accomplishment of complex cooperative planning and resource preservation projects such as Lowell National Historical Park, Ellis Island, and the Chicago Navy Pier. The Denver Service Center also extends planning expertise internationally to countries with emerging park systems, including Saudi Arabia, India, and Sri Lanka.



Beringian Heritage Reconnaissance Study

Ellis Island Restoration Project





Visitor Center,
Fossil Butte National Monument



Architectural Character Guidelines,
Sequoia & Kings Canyon National Parks



International Cooperative Planning
and Design Study for Proposed
Taj National Park, India

Restored Main Building, Ellis Island



Great Hall Registry Room, Ellis Island



Restored Northeast Tower,
Ellis Island





East Executive Avenue Landscape Design, Washington, D.C.

Employee Housing, El Portal, Yosemite National Park



*Environmental Assessment for
Oil and Gas Resources,
Big Cypress National Preserve*

*Cape Hatteras Lighthouse
Stabilization Project,
Cape Hatteras
National Seashore*



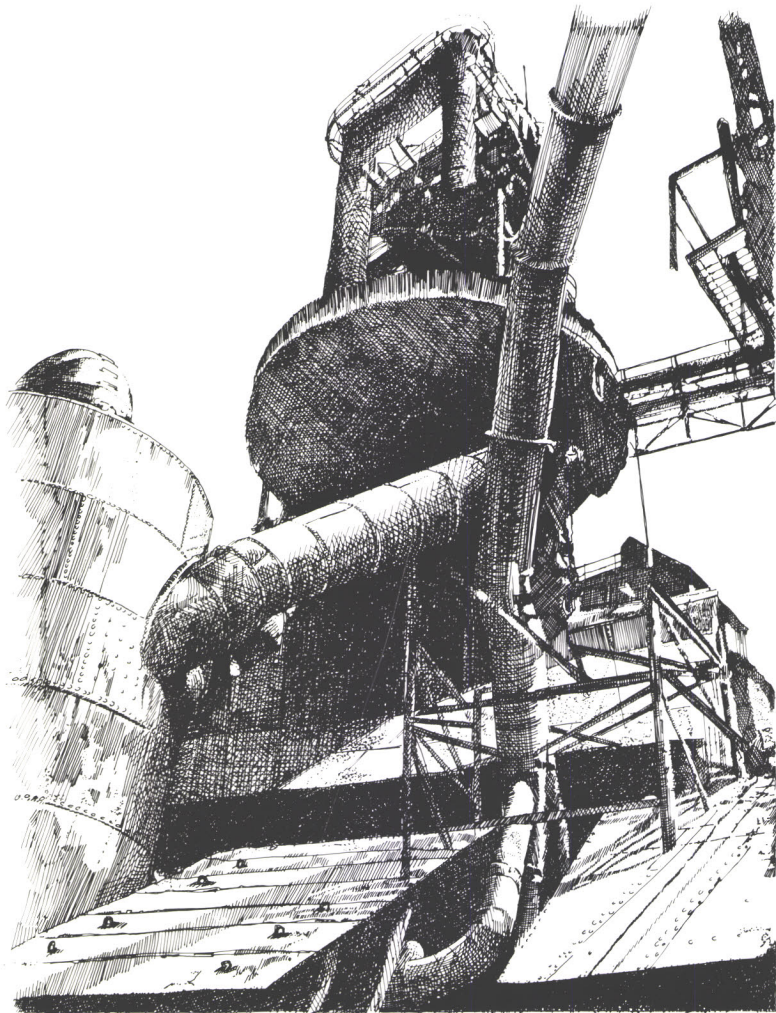
*Headquarters, Glen Jean,
New River Gorge
National River*



AWARDS



Visitor Center and Marina, Voyageurs National Park



Bethlehem Steel Furnace, Johnstown, Pennsylvania,
America's Industrial Heritage Project

- 1984 **Certificate of Commendation in Preservation, National Trust for Historic Preservation** – Gunboat *Cairo* Restoration and display

- 1984 **Federal Design Achievement Award** – Jordan Pond House, Acadia National Park, Maine; Klondike Gold Rush National Historical Park, Alaska (general management plan); Lowell National Historical Park, Massachusetts (visitor center); Santa Monica Mountains National Recreation Area, California (general management plan)

- 1985 **Presidential Award for Design Excellence** – Franklin Court, Independence National Historical Park, Pennsylvania; Linn Cove Viaduct, Blue Ridge Parkway, North Carolina

- 1987 **American Society of Landscape Architects Honor Award** – Canyon Village Lodging Redevelopment, Yellowstone National Park, Wyoming

- 1988 **Presidential Award for Design Excellence** – Boxley Valley Land Use Plan, Buffalo National River, Arkansas; Buffalo Point Campground, Buffalo National River

- 1988 **Federal Highway Administration Biennial Awards for Excellence in Highway Design** – Rough Ridge Viaduct and Bridges, Blue Ridge Parkway, North Carolina (second place); Cascade Creek Bridge, Yosemite National Park, California (third place)

- 1990 **American Society of Landscape Architects Merit Award for Landscape Planning and Analysis** – The Salem Project, Study of Alternatives, Salem Maritime National Historic Site; Beringian Heritage Reconnaissance Study

Planning

- resource base information
- public involvement documents
- general management plans (master plans)
- development concept plans
- environmental assessments
- environmental impact statements
- new area studies
- regional land use plans
- landscape plans
- wilderness studies
- land protection plans
- mining and minerals studies
- historic resource studies
- historic structure reports
- transportation studies
- economic studies
- concessions plans
- engineering studies
- utility studies

Design

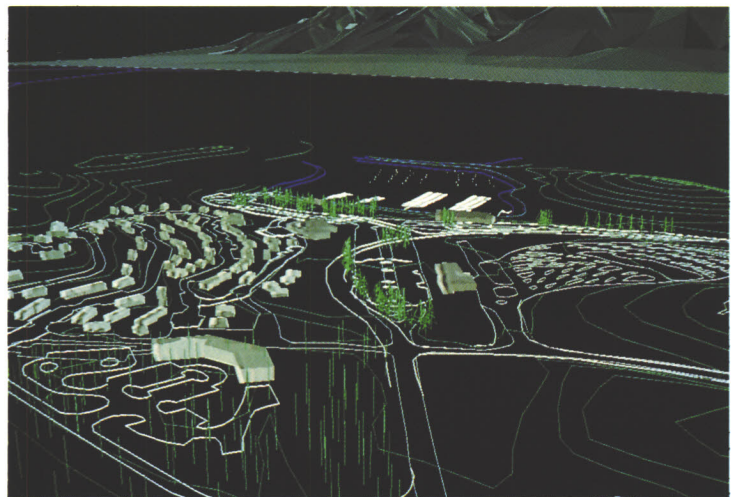
- architectural designs
- historic architectural designs
- landscape designs
- interior designs
- park road design evaluations
- visual simulation (computer/video)
- construction drawings and specifications
- cost estimating
- surveys

Construction

- construction supervision
- as-built drawings
- post-construction evaluation
- maintenance and operational guides

- architecture, historic architecture, and landscape architecture
- civil, structural, electrical, mechanical, environmental, and sanitary engineering
- history and archeology
- urban, community, and recreation planning
- biological, physical, and social sciences
- drafting, mapping, micrographics, editing, composing, and graphic design and illustration

PRODUCTS

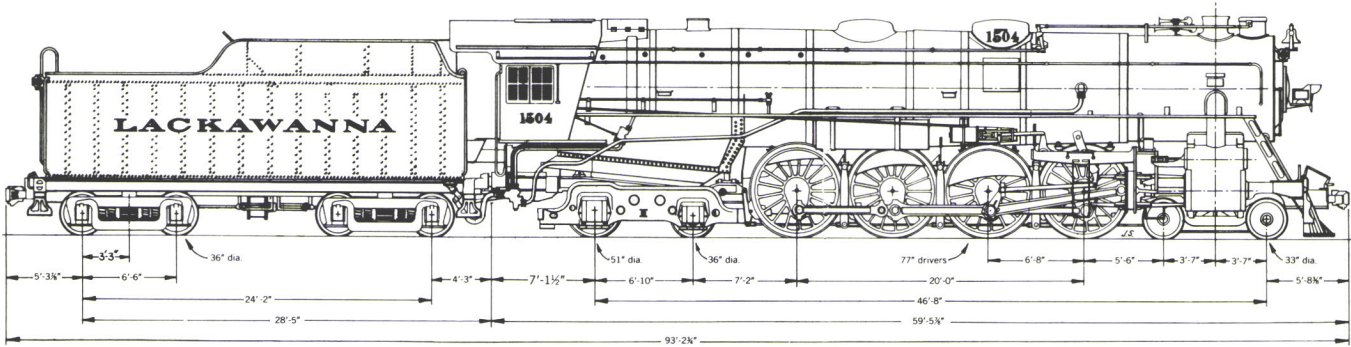


*Computer Simulation of Development Alternatives,
Colter Bay Village, Grand Teton National Park*

PROFESSIONAL REPRESENTATION



Wright Cycle Company, Dayton's Aviation Heritage Project

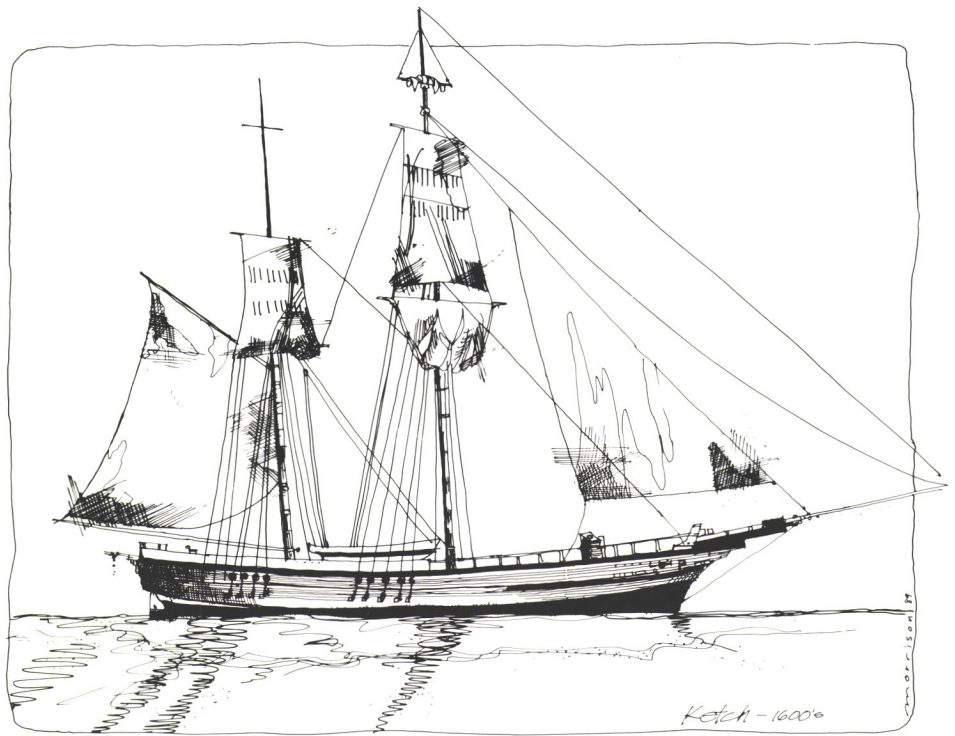


Steam Locomotives, Steamtown National Historic Site





*The Salem Project, Salem Maritime
National Historic Site and Related Sites*



San Francisco Maritime National Historical Park



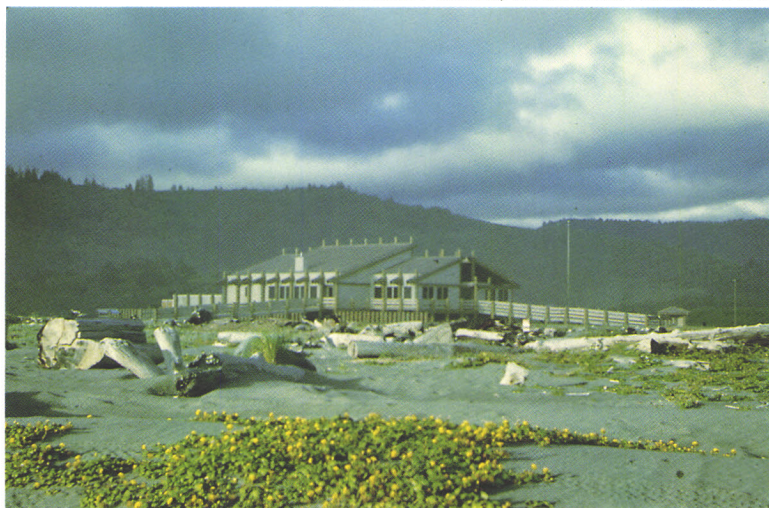
*South Rim Entrance Station,
Grand Canyon National Park*

ADDITIONAL INFORMATION

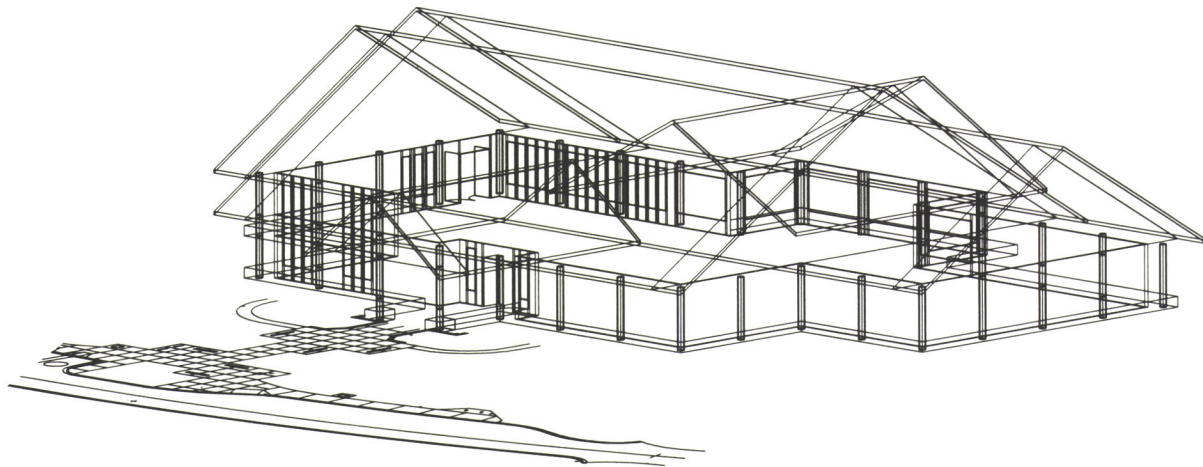
Denver Service Center
12795 W. Alameda Parkway
P.O. Box 25287
Denver, Colorado 80225
(303) 969-2100

For services under the Freedom of Information Act,
contact the Technical Information Center, DSC, (303)
969-2130.

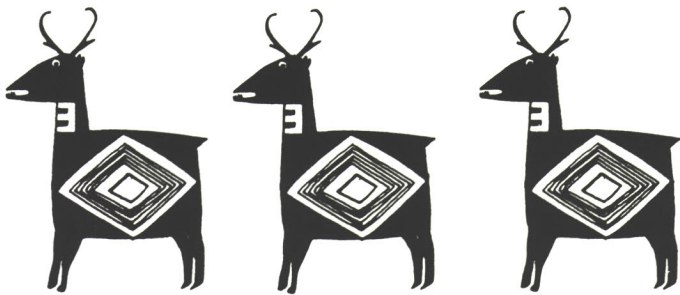
Visitor Information Center, Redwoods National Park



*First-Aid Building, Milford Beach
Delaware Water Gap
National Recreation Area*



*Computer-Aided Design and Drafting for North Cascades
Visitor Center, Henry M. Jackson Memorial,
North Cascades National Park*



Study of Alternatives, Mimbres Culture, New Mexico

As the nation's principal conservation agency, the Department of the Interior has responsibility for most of our nationally owned public lands and natural and cultural resources. This includes fostering wise use of our land and water resources, protecting our fish and wildlife, preserving the environmental and cultural values of our national parks and historical places, and providing for the enjoyment of life through outdoor recreation. The department assesses our energy and mineral resources and works to ensure that their development is in the best interests of all our people. The department also promotes the goals of the Take Pride in America campaign by encouraging stewardship and citizen responsibility for the public lands and promoting citizen participation in their care. The department also has a major responsibility for American Indian reservation communities and for people who live in island territories under U.S. administration.

Publication services were provided by the graphics and editorial staffs of the Denver Service Center.

