

OLMSTED
CENTER
FOR
LANDSCAPE
PRESERVATION



1992
ANNUAL
REPORT

CULTURAL LANDSCAPE PROGRAM
NORTH ATLANTIC REGION

IN PARTNERSHIP WITH THE
FREDERICK LAW OLMSTED
NATIONAL HISTORIC SITE

NATIONAL PARK SERVICE

U.S. DEPARTMENT OF
THE INTERIOR



Printed on recycled paper



American Elm (*Ulmus americana*)
branch from the *Standard Cyclopaedia*
of Horticulture, Volume III by
Liberty Hyde Bailey, courtesy of
Macmillan Publishing Company.

The botanical illustrations that have
been reproduced throughout this
report are plates drawn by Charles
Faxon for *The Silva of North America*
by Charles Sprague Sargent, which
was published in 14 volumes by
Houghton Mifflin between 1891
and 1902. Courtesy of the Arnold
Arboretum of Harvard University
Archives.

ADVISORY COMMITTEE FOR THE OLMSTED CENTER

Fred Bentley
Chief of Maintenance
North Atlantic Region

Ted Davis
Chief of Maintenance
Lowell National Historical Park

Rolf Diamant
Superintendent
Olmsted, Longfellow, and Kennedy National Historic Sites

Joe Finan
Chief of Maintenance
Saratoga National Historical Park

Lawrence Gall
Superintendent
Minute Man National Historical Park

Robert McIntosh
Associate Regional Director, Resources Management and Research
North Atlantic Region

Herbert Olsen
Chief, Cultural Resources Management Division
North Atlantic Region

Robert Reynolds
Superintendent
Acadia National Park

Terry Savage
Acting Associate Regional Director, Planning, Development and Engineering
North Atlantic Region

Henry Van Brookhoven
Chief of Maintenance
Roosevelt-Vanderbilt National Historic Site

OLMSTED
CENTER
FOR
LANDSCAPE
PRESERVATION



1992 ANNUAL REPORT

CULTURAL LANDSCAPE PROGRAM
NORTH ATLANTIC REGION

IN PARTNERSHIP WITH THE
FREDERICK LAW OLSTED
NATIONAL HISTORIC SITE

NATIONAL PARK SERVICE

U.S. DEPARTMENT OF
THE INTERIOR

99 WARREN STREET
BROOKLINE, MASSACHUSETTS 02146

1993

PARTNERS

The following organizations and individuals worked with the Olmsted Center in 1992:

- Arnold Arboretum of Harvard
University
- Massachusetts Historical
Commission
- NPS Mid-Atlantic Region
- NPS Midwest Region
- Frank Ackerman
Cape Cod National Seashore
- Bill Barlow
North Atlantic Regional Office
- Marcy Beitel
Boston National Historical Park
- Len Bobinchock
Acadia National Park
- Nancy Britain
*Blackstone River Valley National
Heritage Corridor*
- Dru Bronson-Jeoffroy
*Springfield Armory National
Historic Site*
- Leah Burt
Edison National Historic Site
- Steve Carlson
Boston National Historical Park
- Dave Clayton
*Office of Public Archeology,
Boston University*
- Joyce Connolly
Olmsted National Historic Site
- Walter Cormier
*Saugus Iron Works National
Historic Site*
- Jerry Cote
Lowell National Historical Park
- George Crothers
Edison National Historic Site
- Drew Daire
Morristown National Historical Park
- Blaise Davi
Minute Man National Historical Park
- Ted Davis
Lowell National Historical Park
- George Dzionba
Sagamore Hill National Historic Site
- Al Farrugio
Statue of Liberty National Monument
- Joseph Finan
Saratoga National Historical Park
- Tom Flaskal
Sagamore Hill National Historic Site
- Bob Fox
Weir Farm National Historic Site
- Eugene Gabriel
Adams National Historic Site
- Ron Galente
*Roosevelt-Vanderbilt National
Historic Sites*
- Meg Gallucci
Acadia National Park
- John Gilbert, Jr.
Saint-Gaudens National Historic Site
- John Goggin
Boston National Historical Park
- Gerald Kelso
North Atlantic Regional Office
- Steve Hannaburgh
*Roosevelt-Vanderbilt National
Historic Sites*
- Barbara Hartly
*Olmsted, Longfellow, Kennedy National
Historic Sites*
- Ray Hernandez
*Saugus Iron Works National
Historic Site*
- Mark Hertig
Cape Cod National Seashore
- Tom Hoffman
Gateway National Recreation Area
- Heidi Hohmann
North Atlantic Regional Office
- Dick Hsu
North Atlantic Regional Office
- Roger Johnson
Sagamore Hill National Historic Site
- Caroline Keinath
Adams National Historic Site
- Jim Killian
Cape Cod National Seashore
- Keith Laplante
*Springfield Armory National
Historic Site*
- Cindy Laurenza
Lowell National Historical Park
- Larry Lowenthal
*Springfield Armory National
Historic Site*
- Vidal Martinez
Sagamore Hill National Historic Site
- Bob Masson
Morristown National Historical Park
- Mike McKeon
Boston National Historical Park
- Robby Nieves
Minute Man National Historical Park
- William Noble
Saint-Gaudens National Historic Site
- Thomas O'Neil
Boston National Historical Park
- Jim Patterson
National Capital Regional Office
- Maureen Phillips
North Atlantic Regional Office
- Leroy Renninger
*Women's Rights National
Historical Park*
- Wayne Rivard
Adams National Historic Site
- Vivian Rose
*Women's Rights National
Historical Park*
- Carl Salmons
*Saugus Iron Works National
Historic Site*
- Richard Stamdahl
Fire Island National Seashore
- Bo Stein
Sagamore Hill National Historic Site
- Doug Tarr
Edison National Historic Site
- Mike Thomas
Gateway National Recreation Area
- Tim Thornhill
Salem Maritime National Historic Site
- Brian Underwood
Morristown National Historical Park
- Jim Vekasi
Acadia National Park
- Lou Venuto
Gateway National Recreation Area
- Deborah Wade
Acadia National Park
- Teresa Wallace
Minute Man National Historical Park
- Nancy Waters
Edison National Historic Site
- Paul Weinbaum
North Atlantic Regional Office
- Stewart Weinreb
*Massachusetts Department of
Environmental Management*
- Philip Wright
Lowell National Historical Park
- Mike Wurm
Lowell National Historical Park
- Barbara Yocum
North Atlantic Regional Office
- Thanks to the staff of the
Olmsted National Historic Site,
especially:
- Rolf Diamant
Superintendent
- Lee Farrow
Assistant Superintendent
- Ed Bacigalupo
Facility Manager

OLMSTED CENTER STAFF

MARGARET COFFIN, *Landscape Architect*, addresses preservation maintenance issues, including pest, disease and structural problems, pruning, propagation, and replacement of historically significant plants. She has developed a guide for cultural landscape preservation maintenance and is project manager for the regional historic plant inventory. Margaret has a B.S. in Plant Science from Cornell University and a Master of Landscape Architecture degree from Harvard University.

CATHERINE EVANS, *Landscape Architect*, is involved in preservation planning for historic landscapes. Her work includes research and analysis, resource and integrity assessment, as well as the preparation of treatment plans. Catherine has prepared a Cultural Landscape Report for the Longfellow National Historic Site and is working on the restoration of the landscape at the F.L. Olmsted National Historic Site. Catherine has an A.B. in Art and Urban Histories from Vassar College, and a Master of Landscape Architecture degree from the University of Pennsylvania.

LAUREN MEIER, *Historical Landscape Architect*, coordinates the preservation planning projects for the Olmsted Center. In addition, she is the project manager of the grounds restoration at the F.L. Olmsted National Historic Site and serves on the planning team for Weir Farm National Historic Site. Prior to joining the Olmsted staff, she coordinated the Historic Landscape Initiative for the Preservation Assistance Division of the NPS in Washington, D.C., and produced several preservation publications including the *Guidelines for the Treatment of Historic Landscapes*. She has received awards from the Boston Society of Landscape Architects, the American Society of Landscape Architects and the Presidential Design Awards program for her work in landscape preservation. Lauren received a B.A. in Botany from Pomona College and a Master of Landscape Architecture degree from Harvard University.

NORA MITCHELL, *Manager, North Atlantic Region Cultural Landscape Program*, oversees the Olmsted Center as part of the Regional Program. As Manager of the Regional Program, Nora provides assistance to parks throughout the region on all aspects of cultural landscape preservation. She conducts and manages projects, organizes training programs, provides policy guidance, and serves as the region's liaison with the NPS Washington Office on cultural landscapes. In 1988, as a DeWitt Wallace Fellow in Historic Preservation, Nora studied cultural landscape programs in England with potential application to the U.S. She currently serves as Chair of the Historic Landscapes Committee of the US/ICOMOS (International Council on Monuments and Sites), an advisor to UNESCO. Nora received a B.A. in Biology from Michigan State University, and holds Masters Degrees in Ecology from University of Montana and in Environmental Planning and Policy from Tufts University.

CHARLES PEPPER, *Supervisory Horticulturist*, coordinates the preservation maintenance projects for the Olmsted Center. In addition, he is co-coordinator of the North Atlantic Region's Gardener Intake Program, manager of the Regional Nursery Project, and is the landscape technical representative on the NPS Inventory and Condition Assessment Program (ICAP) Task Force. Charles is active in promoting educational and training opportunities that recognize the importance of skilled landscape preservation maintenance professionals. He has organized regional and national Historic Landscape Maintenance Workshops, which have effectively raised the level of expertise of field staff. He has a broad background in landscape management, which includes international experience at botanical gardens, public parks, and private gardens. Charles has an A.S. in Applied Horticulture from the State University of New York and has received a B.S. in Plant Science with a specialization in Landscape Horticulture from Cornell University.

TABLE OF CONTENTS

Foreword	v
North Atlantic Region's Cultural Landscape Program	1
Olmsted Center for Landscape Preservation	2
1992 Olmsted Center Projects	3
1992 Cooperative Projects: Training and Technology Development	9
1993 Olmsted Center Project List	11
Olmsted Center Staff	12
Partners	13
Olmsted Center Advisory Committee	14

1993 OLMSTED CENTER PROJECT LIST

1993 TECHNICAL ASSISTANCE PROJECT LIST

Projects scheduled for FY 1993:

ACADIA NP
Sieur de Monts Historic Landscape
Assessment, Phase II: Integrity Analysis
Motor Loop Road Historic Landscape
Assessment, Phase II: Determination of
National Register Eligibility

ADAMS NHS
Orchard Management Plan
Historic Tree Maintenance Assistance

BOSTON NHP
Historic Tree Maintenance at Bunker Hill and
Navy Yard

CAPE COD NS
Vegetation Management and Preservation for
Stone Fences at Fort Hill

EDISON NHS
Glenmont Historic Landscape Maintenance
Plan

GATEWAY NRA
Fort Hancock Landscape Maintenance Plan

LOWELL NHP
Hazardous Tree Maintenance at Francis Gate

MARSH-BILLINGS NHS
Historic Landscape Reconnaissance and
Assessment

MARTIN VAN BUREN NHS
Historic Tree: Stabilization of Hazardous
Conditions

MINUTE MAN NHP
Rejuvenative Pruning and Plant Replacement
in Formal Gardens at Buttrick Mansion

MORRISTOWN NHP
Orchard Tree Propagation, Phase II

ROOSEVELT-VANDERBILT NHS
Vista Clearing and Orchard Pruning

SAGAMORE HILL NHS
Historic Tree Removal
Assess Historic Tree Age
Historic Tree Propagation, Phase II

SAINT-GAUDENS NHS
Hedge Restoration, Phase I
Historic Tree and Hedge Management Program,
Phase II

SARATOGA NHP
Daughters of the American Revolution
Memorial Historic Landscape Assessment

STATUE OF LIBERTY NM
Liberty Island Formal Hedge Rejuvenation

WEIR FARM NHS
Inventory and rejuvenative pruning for
Weir and Burlingham Gardens

*Projects that will be conducted in FY 1993
as time allows:*

ACADIA NP
Storm Beach Historic Tree Maintenance

CAPE COD NS
Highland Links Landscape Management Plan

EDISON NHS
Glenmont Historic Landscape Assessment

FIRE ISLAND NS
Landscape Feature Identification

GATEWAY NRA
Fort Hancock Historic Landscape Assessment,
Phase II

MINUTE MAN NHP
Buttrick Mansion Formal Gardens Historic
Landscape Assessment

MORRISTOWN NHP
Orchard Pruning

SALEM MARITIME NHS
Planting Plan Integrity Analysis

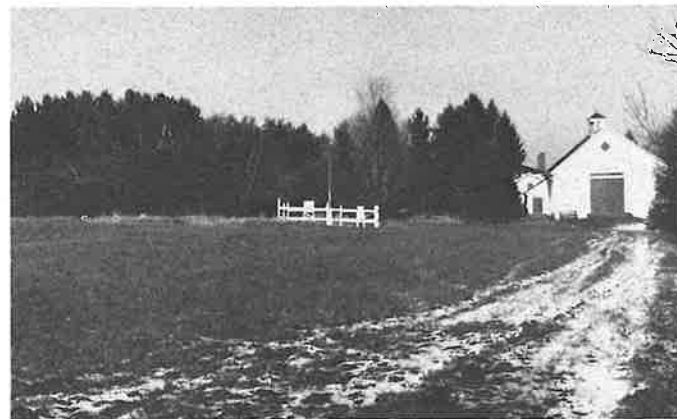
SARATOGA NHP
Tree Replacement at Schuyler Estate

SPRINGFIELD ARMORY NHS
Recommendations for Byers Street clean up

TECHNOLOGY DEVELOPMENT

North Atlantic Region's Native and Historic Plant Nursery

Landscapes throughout the North Atlantic Region support a diversity of native and introduced plants. Many of these plants are important landscape features and are also rare, represent unique varieties, or have direct association to important historic figures or events. To assist parks with in-kind replacement of significant plants, a North Atlantic Region's Native and Historic Plant Nursery is being developed at Minute Man National Historical Park in cooperation with the Division of Natural Resource Management.



*Proposed site for regional native and historic plant nursery,
Minute Man National Historical Park*

Geographic Information System

Caring for historic landscapes requires the collection and analysis of significant quantities of detailed information. To assist with data collection and management, a Geographic Information System (GIS) is under development at the F.L. Olmsted NHS in collaboration with the North Atlantic Office of Scientific Studies. By linking graphic illustrations, such as base maps, to a database, GIS is an important tool for park staff in conducting landscape preservation, maintenance, and resource management activities.

Regional Historic Plant Inventory

This inventory will ensure that plants of historical or botanical significance are preserved and will serve as a model program for other important cultural landscapes. The project will map, inventory, identify, collect herbarium specimens and, when necessary, propagate historic plant material at seven historic sites in the North Atlantic Region. The project is being conducted over the next three years in cooperation with the Office of Scientific Studies and through a Cooperative Agreement with the Arnold Arboretum of Harvard University.



*Barbara Harty collects plant material for
herbarium specimens*

FOREWORD

The National Park Service is charged with stewardship of our nation's landscape legacy. Frederick Law Olmsted encouraged the recognition of American landscapes as cultural resources when he described landscapes as "a work of art... a heritage to be sedulously preserved." To enhance our understanding and management of the many landscapes in the North Atlantic Region, we established a Cultural Landscape Program in 1990. The Olmsted Center for Landscape Preservation was created at the Frederick Law Olmsted National Historic Site in 1992, as an extension of the Cultural Landscape Program, to provide technical assistance to parks with immediate needs for protection of important cultural landscape resources.

In its first year of operation, the Olmsted Center has demonstrated that pooling expertise from the parks and regional office is a highly cost-effective method of providing timely help to park managers. In 1992, the Olmsted Center for Landscape Preservation provided assistance on 25 projects in 20 parks. In 1993, 32 technical assistance projects in 22 parks are underway. Many of these projects are accomplished by mobilizing the skill and energy of landscape maintenance professionals from parks throughout the region. We are also fortunate to have the world-renowned Arnold Arboretum of Harvard University as an active partner of the Olmsted Center, providing their expertise in plant identification, propagation, and training.

I congratulate the staff of the Olmsted Center on the tremendous progress they have made in providing assistance to park managers. I thank the Olmsted National Historic Site, whose continuing support for the Olmsted Center reflects their commitment to innovation in the field of landscape preservation and maintenance. A special thanks is also due to all the parks that generously contributed staff to do field work and to serve on the Olmsted Center Advisory Committee. It is particularly appropriate that we in the North Atlantic, a region with a rich heritage of cultural landscapes, are leaders in this new area of historic preservation.

Marie Rust
Regional Director
North Atlantic Region



Redbud
Cercis canadensis

1992 COOPERATIVE PROJECTS: TRAINING AND TECHNOLOGY DEVELOPMENT

A number of other landscape preservation projects are conducted in cooperation with the Olmsted Center for Landscape Preservation. Cooperators include the F.L. Olmsted NHS and other parks and the North Atlantic Region's Divisions of Natural Resource Management and Office of Scientific Studies. The NPS Cultural Resources Training Initiative and the Park Historic Architecture Division in Washington, D.C. provided funding for training.

TRAINING AND PROFESSIONAL DEVELOPMENT

Gardener Intake Program

Initiated in response to the increasing difficulty of recruiting and retaining skilled gardeners, the Gardener Intake Program assists parks in filling vacant positions with carefully trained and highly motivated employees. Staff from the F.L. Olmsted and Adams National Historic Sites and the North Atlantic Regional Office coordinate this two-year program. Six trainees received intensive horticultural instruction at the Arnold Arboretum and hands-on field experience working with grounds crews at national parks throughout the North Atlantic Region. The Intake Program field assignments often provided assistance on Olmsted Center projects.

Historic Landscape Preservation Workshop for State Historic Preservation Officers

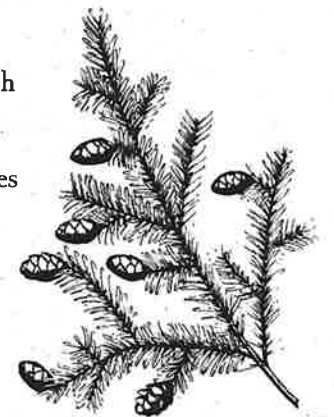
In May 1992, an historic landscape preservation workshop for State Historic Preservation Officers (SHPO) was conducted in cooperation with the Massachusetts Historical Commission and the NPS Mid-Atlantic Region. This workshop addressed identification and evaluation, integrity, and treatment of historic landscapes and included presentations by all SHPO offices that attended.

Historic Landscape Maintenance Workshop

The second annual Historic Landscape Maintenance Workshop was held at the Garden Center of Greater Cleveland in August 1992. Similar to the first annual workshop sponsored by the North Atlantic Region at the Arnold Arboretum in 1991, this workshop provided state-of-the-art information on "hands-on" landscape preservation practices. Participants from all over the United States represented both public and private preservation organizations. This workshop continues to encourage a national network and provides an important forum for the exchange of technical information on the specialized field of historic landscape preservation maintenance.

Strategic Training Plan for Historic Landscape Preservation

The Cultural Resource Training Initiative provided funding for development of a strategic training plan for historic landscape preservation. This plan is currently being developed in cooperation with the Arnold Arboretum of Harvard University and several divisions in the NPS Washington Office.



Canada Hemlock
Tsuga canadensis

**WEIR FARM
NATIONAL HISTORIC SITE,
CONNECTICUT**

*Hazardous Tree Stabilization and
Shrub Rejuvenation*

Many of the trees and shrubs in the landscape at Weir Farm are in hazardous or deteriorating condition. A team of landscape maintenance specialists from several parks used techniques such as rejuvenative pruning, cabling, and bracing to stabilize hazardous tree conditions, improve plant health, and reduce visitor safety problems.



*Rejuvenative pruning underway at the Burlingham House,
Weir Farm National Historic Site*

Grounds Maintenance Plan

A maintenance plan was prepared to guide and document preservation operations on the landscape, one of the primary cultural resources at Weir Farm. Immediate maintenance requirements and long-term routine and cyclic maintenance schedules were developed for landscape features within the site's historic core.

**WOMEN'S RIGHTS
NATIONAL HISTORICAL PARK,
NEW YORK**

*Landscape and Archives Reconnaissance,
Stanton House*

The home of Elizabeth Cady Stanton, champion of women's rights, is a key feature of the park. Substantial historical research has been completed on the house and a number of archeological studies have been performed on parts of the landscape. In order to provide recommendations for future study and management of the Stanton House landscape, the Olmsted Center staff prepared an overview of archival sources and an outline for a Cultural Landscape Report.

**NORTH ATLANTIC REGION'S
CULTURAL LANDSCAPE PROGRAM**

From the carriage roads of Acadia National Park to the industrial complex of the Edison Laboratory, the cultural landscapes of the North Atlantic Region are remarkable for their diversity and significance. To protect these resources, the Cultural Landscape Program assists parks with research, preservation, training, and technical support.

Cultural Landscape Reports, detailing the history and significance of the landscape, are being prepared in cooperation with eleven parks. These reports provide park managers with a sound basis for decision making and guide long-term preservation of the landscape. The Program is also conducting a comprehensive inventory of cultural landscapes throughout the region as part of a national initiative. The information collected in the inventory will assist parks in the identification of additional research and management needs.

Training and professional development of park staff is a priority of the Cultural Landscape Program. In 1991, the first National Historic Landscape Maintenance Workshop was held at the Arnold Arboretum of Harvard University. In 1992, two training courses were organized: "Principles and Practice: Landscape Preservation for the Historic Site Administrator"; and "Historic Landscape Preservation Workshop for State Historic Preservation Officers." A strategic training plan for landscape preservation is currently under development in cooperation with the Arnold Arboretum. This plan will recommend development of additional training opportunities.

In addition to long-term planning and professional development, the Cultural Landscape Program offers technical assistance to park Superintendents and their staff through the Olmsted Center for Landscape Preservation.



Sheepberry
Viburnum lentago

OLMSTED CENTER FOR LANDSCAPE PRESERVATION

The Olmsted Center for Landscape Preservation is a new regional center for historic landscape technical assistance, training, and technology development. Located at the Frederick Law Olmsted National Historic Site, the Olmsted Center is a partnership that utilizes the talents of both park and regional staff.

The primary mission of the Olmsted Center is to provide timely preservation maintenance and planning assistance. At the beginning of each year, park superintendents identify their most critical projects. These projects generally require four weeks or less for completion. Superintendents, maintenance chiefs, and regional office staff serve on the Olmsted Center Advisory Committee, which sets priorities for the annual work program. The Advisory Committee also monitors progress throughout the year to ensure accountability and quality of work.

PRESERVATION MAINTENANCE

Many parks lack adequate funding for cyclic maintenance on historic landscapes. This results in deferred maintenance and in deterioration of landscape features, especially important plant material. The Olmsted Center assesses preservation maintenance problems and recommends and guides emergency and cyclic landscape maintenance work in close collaboration with park staff. Projects include inspection and stabilization of hazardous trees; identification, rejuvenation, and propagation of historic plants; and preparation of site-specific landscape preservation maintenance guides.

Field work is accomplished primarily by organizing crews from various parks throughout the North Atlantic Region. Many of these projects could not be completed without assistance from these enthusiastic, skilled maintenance professionals. Help is also provided by experts outside the National Park Service, in particular, by the Arnold Arboretum of Harvard University.

PRESERVATION PLANNING

Park managers are frequently faced with questions related to the identification, significance, and preservation of historic landscapes. The Olmsted Center assists with historical research, identification of important landscape features, analysis of integrity, and review of proposed plans. Historic Landscape Assessments identify preservation issues and provide recommendations for future actions. When a more comprehensive Cultural Landscape Report is appropriate, the Olmsted Center can help by drafting a scope of work. As in preservation maintenance, work is accomplished in close collaboration with park staff.



American Elm
Ulmus americana



Joe Finan and Charlie Pepper inspect a declining Black Locust, Schuyler House, Saratoga National Historical Park

SARATOGA NATIONAL HISTORICAL PARK, NEW YORK

Tree Maintenance Program, Schuyler House

Most of the trees on the Schuyler property are in decline. A maintenance and replacement program was needed to ensure that the landscape will retain its historic character in the years ahead. Each tree was inspected to determine the scope of tree work needed. A maintenance, replacement, and recordkeeping system was set up to guide and document landscape preservation work.

SAUGUS IRON WORKS NATIONAL HISTORIC SITE, MASSACHUSETTS

Specimen Tree Management Plan

Specimen trees located in close proximity to structures were inspected to determine their overall condition and structural stability. A monitoring and maintenance program was established which can be expanded to incorporate other landscape features.

SPRINGFIELD ARMORY NATIONAL HISTORIC SITE, MASSACHUSETTS

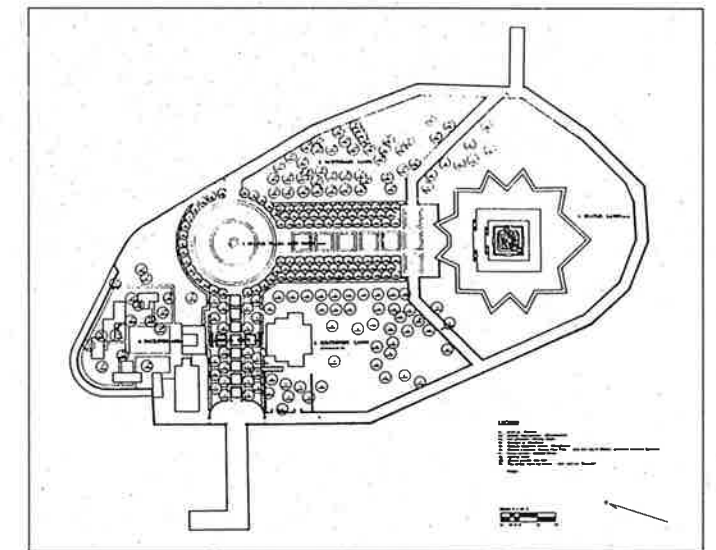
Landscape Maintenance Plan

A comprehensive maintenance plan was needed to guide management of the mature trees, shrubs, and hedges on the property. The preservation maintenance program developed contains interim inspection, monitoring, and maintenance procedures for the park until a Cultural Landscape Report, including a Treatment Plan, are completed.

STATUE OF LIBERTY NATIONAL MONUMENT, NEW YORK

Tree Assessment and Maintenance Plan, Liberty Island

Trees on the island are stressed by heavy visitation and harsh environmental conditions. In order to maintain the health and vigor of these trees and ensure visitor safety, a detailed maintenance schedule was developed. After a comprehensive tree inspection, an existing conditions map with a schedule of tree maintenance was prepared for the site.



Plan of existing trees, Liberty Island, Statue of Liberty National Monument

*Shrub and Hedge Rejuvenation,
Wayside and Buttrick Mansion*

The grounds of the Wayside and Buttrick Mansions have a diverse collection of unique, old plant material in need of specialized care. Working with grounds staff from several Boston area national parks, Olmsted Center staff carefully pruned these plantings to remove damaged material and encourage healthy new growth.

**MORRISTOWN NATIONAL
HISTORICAL PARK,
NEW JERSEY**

Orchard Tree Propagation, Wick Farm

The ten-acre Wick Farm Orchard contains an assortment of apple trees which vary greatly in size, age, and variety. Several of the older trees were vegetatively propagated to prepare for their replacement.



Tree crew from several parks who pruned nearly 200 trees and shrubs, Morristown National Historical Park

*Hazardous Tree and Ornamental
Shrub Pruning*

The declining health of many large trees and ornamental shrubs throughout the park is causing safety and resource protection problems in areas of the park with high visitor use. The Olmsted Center, working with staff from several North Atlantic Region parks, pruned nearly two hundred trees and shrubs, reducing hazards and rejuvenating plant material.

**SAGAMORE HILL NATIONAL
HISTORIC SITE, NEW YORK**

*Hazardous Tree Assessment
and Propagation*

Several specimen trees in close proximity to the Roosevelt Home are rapidly declining. A tree assessment was conducted to identify immediate work needed to reduce hazards. Propagation cuttings were collected to prepare for replacement of these historic trees.

**SAINT-GAUDENS
NATIONAL HISTORIC SITE,
NEW HAMPSHIRE**

Tree Management Plan

Many significant trees within the historic core of this park are stressed due to age and pests. Each tree was inspected to determine the cause and level of damage. The results of this inspection were used to specify maintenance work and establish a calendar for inspecting and monitoring the condition of the trees.

Identify Historic Plants

The landscape at Saint-Gaudens NHS contains many unidentified plants which contribute to the historic character of the site. Working closely with park staff and historic plant specialists, a detailed plant identification process was initiated which will provide baseline information critical for making preservation decisions.

**SALEM MARITIME
NATIONAL HISTORIC SITE,
MASSACHUSETTS**

Landscape Maintenance Plan

Salem Maritime contains a diverse collection of plants, including fruit trees and ornamental shrubs, which require a high level of maintenance. In order to provide a calendar for landscape maintenance operations, the Olmsted Center developed guidelines for the care and replacement of existing landscape features.

1992 OLMSTED CENTER PROJECTS

Twenty parks submitted fifty-seven project requests to the Olmsted Center, indicating a widespread need for historic landscape preservation maintenance and planning in North Atlantic Region parks. Twenty-five projects were completed including: six maintenance projects, nine maintenance plans, five historic landscape assessments and five reconnaissance projects. Each project is summarized below.

**ACADIA NATIONAL PARK,
MAINE**

*Historic Landscape Assessment,
Motor Roads*

Acadia National Park contains an important system of historic motor roads designed and constructed by a number of individuals, including John D. Rockefeller, Jr., the firm of Olmsted Brothers, and the Bureau of Public Roads. The Federal Highway Administration will be rehabilitate a portion of this system in 1994. In order to prepare for this work, an Historic Landscape Assessment was developed for the motor road system, including a description of its history, significance, preservation issues, and a detailed scope of work for a Historic Property Assessment, Cultural Landscape Report, and Design Guidelines.

*Historic Landscape Assessment,
Sieur de Monts*

The Sieur de Monts spring area was initially developed by George Dorr, the park's first superintendent, with later changes by the Olmsted Brothers and the NPS. This project provided an overview of the history, integrity, and significance of Sieur de Monts to assist the park managers in evaluating development proposals such as the expansion of the Abbe Museum and parking facilities.



Historic postcard view, Sieur de Monts Spring, Acadia National Park, n.d., courtesy Maine Historic Preservation Commission

**ADAMS NATIONAL HISTORIC
SITE, MASSACHUSETTS**

Historic Landscape Maintenance Program

Adams NHS contains an extensive collection of historic plants, each requiring careful monitoring and maintenance to ensure that all significant plants are preserved. A program was developed for inventorying, inspecting, documenting work procedures, and keeping records for each plant. This program will serve as the foundation for a forthcoming historic plant inventory and a comprehensive integrated pest management program.

BLACKSTONE RIVER VALLEY NATIONAL HERITAGE CORRIDOR, MASSACHUSETTS AND RHODE ISLAND

Preservation Needs Assessment and Agricultural Field Protection, Freegrace-Marble Farm

The Freegrace-Marble Farm is an important cultural resource in the Blackstone Corridor. The historic landscape features of the farm, including apple orchards and hay fields, needed immediate maintenance. Managers also identified a need for a more long-term strategy for preservation. Maintenance managers from several parks provided recommendations for the management of the orchard and agricultural fields. In particular, guidance for mowing operations was provided to reduce the loss of fields threatened by encroaching woody vegetation.

BOSTON NATIONAL HISTORICAL PARK, MASSACHUSETTS

Landscape Preservation Maintenance Program, Bunker Hill

Trees planted in the 1970s, prior to NPS ownership, have begun to infringe upon the floodlights of the monument and the lighting of walkways. Immediate and long-term strategies were provided for pruning and replacement of trees until a Cultural Landscape Report with a Treatment Plan are completed.

Bunker Hill Monument INSPECTION FIELD SHEET									
Category		Specimen Trees		Date: 8/3/92		Inspectors: Tom O'Neil, Margie Coffin			
Area to:	Between:	Normal Tree:	Dead:	Wound:	Other:	DBH (inches):	Height (feet):	Comments on Condition, Field Diagnosis & Work Needed	Priority:
MA & US Gates		2	2	2	3	2	3	6 1/2" dbh dead bark at base of tree, lost leader, poor overall condition, plan for replacement	* P
		4	0	1	2	21"	dbh	poor overall condition, HAZARD, to be removed and replaced	* I
		4	0	1	3	6"	dbh	poor structural form, girdles at base and at top, salt damage, plan to remove and replace	* P
		4	0	1	4	21"	dbh	remove suckers, needs overall pruning	* P
		4	0	1	5	5 1/2"	dbh	poor structure, salt damage, plan to remove and replace	* P
		4	0	1	6	10 1/2"	dbh	girdling root, poor structure, salt damage, plan to remove and replace	* P
		4	0	1	7	7"	dbh	good overall form, some crossing roots, needs light pruning and removal of crossing branches	* P

Inspection Field Sheet, Bunker Hill Monument, Boston National Historical Park

CAPE COD NATIONAL SEASHORE, MASSACHUSETTS

Historic Landscape Resource Assessment, Highland Light

Erosion of the Highland Plains in Truro threatens the Highland Light House, a National Historic Landmark. The Coast Guard, which owns and operates Highland Light, has proposed moving the light inland in order to save it. The Olmsted Center collaborated with the park, North Atlantic Region's Cultural Resources Management and Planning Divisions, and the Denver Service Center to prepare a preliminary strategy for moving the lighthouse. This involved an evaluation of a potential historic district surrounding the lighthouse composed of the Highland Golf Links and nearby historic structures.



Highland Light, Cape Cod National Seashore

EDISON NATIONAL HISTORIC SITE, NEW JERSEY

Interview of Gardener and Preliminary Scope of Work for a Cultural Landscape Report, Glenmont

George Crothers, a gardener who has worked at Glenmont for the past twenty years, is planning to retire. An interview with Mr. Crothers was conducted to record his knowledge of the history and maintenance requirements of the landscape at Glenmont. This project also included preliminary archival research, an outline for a Cultural Landscape Report, and recommendations for future preservation maintenance work.

FIRE ISLAND NATIONAL SEASHORE, NEW YORK

Transplant Historic Trees, William Floyd Estate

Two mature historic Black Locust trees located in front of the William Floyd Manor House were uprooted and destroyed by Hurricane Bob in 1991. The Olmsted Center assisted with coordinating and supervising the transplanting of two large replacement Black Locust trees into the historic locations.



Replanting historic trees, William Floyd Estate, Fire Island National Seashore

GATEWAY NATIONAL RECREATION AREA, NEW JERSEY

Landscape and Archives Reconnaissance, Sandy Hook, Fort Hancock

The Fort Hancock Historic District is a military campus complex containing many buildings built between 1898 and 1936. The campus landscape is clearly designed and contains notable landscape features such as a planting of Sycamore trees which line many of the important roads, green spaces, and paths. A report was prepared describing the importance of the landscape and providing recommendations for future planning and preservation maintenance projects.

LOWELL NATIONAL HISTORICAL PARK, MASSACHUSETTS

Historic Landscape Assessment, Kirk Street Agent's House

The Agent's House on Kirk Street housed the administrative heads of the Massachusetts and Boott Mills from 1847 to 1904. Planning is underway to rehabilitate the Agent's House as the park's headquarters. This project entailed preliminary research and preparation of recommendations for treatment of the landscape surrounding the Agent's House.

MINUTE MAN NATIONAL HISTORICAL PARK, MASSACHUSETTS

Erosion Control and Shade Tree Management, North Bridge Trail

The trail leading to the historic North Bridge is the primary access route for approximately 700,000 visitors annually, and as a result, is highly compacted and eroded. Recommendations were developed for addressing issues related to visitor safety, resource protection, shade tree maintenance, and preservation of the integrity of this landscape.



Historical view of North Bridge, circa 1840, Minute Man National Historical Park, courtesy Concord Free Public Library