

**AMPHIBIANS
AND
REPTILES
OF
JOSHUA TREE NATIONAL PARK**

Annotated and Illustrated Checklist

by

Harold F. De Lisle

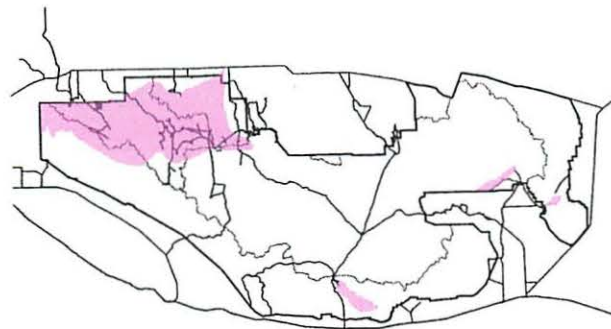
2001 edition

AMPHIBIANS

California Toad (*Bufo halophilus*)
Oasis of Mara



Red-spotted Toad (*Bufo punctatus*)



Probable distribution of the Red-spotted Toad (*Bufo punctatus*) within Joshua Tree National Park

0 0 0 18 Kilometers

California Tree Frog (*Hyla cadaverina*)

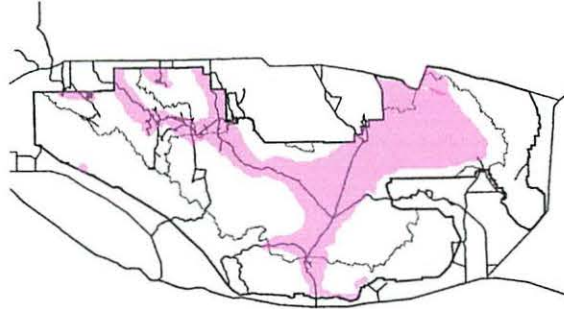


Distribution of locality records for the California Tree Frog (*Hyla cadaverina*) in Joshua Tree National Park

10 0 10 20 Kilometers

REPTILES

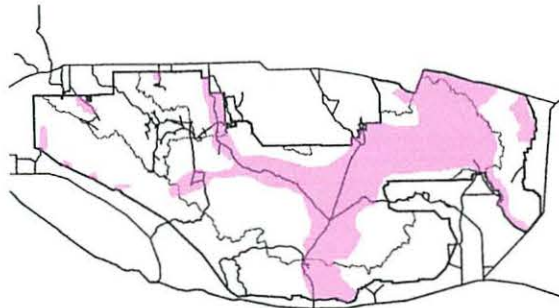
Desert Tortoise (*Gopherus agassizii*)



Probable distribution of the
Desert Tortoise (*Gopherus agassizii*)
within Joshua Tree National Park

0 0 0 10 Kilometers

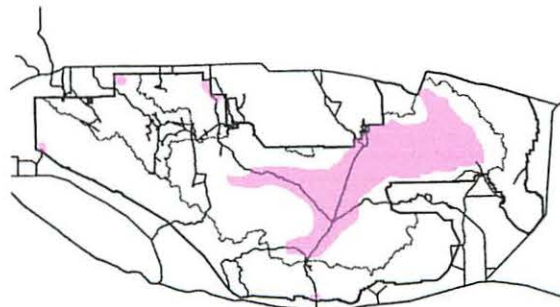
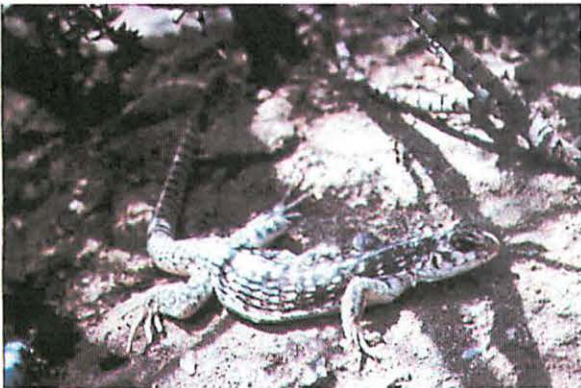
Desert Banded Gecko (*Coleonyx variegatus variegatus*)



Probable distribution of the
Desert Banded Gecko
(*Coleonyx variegatus variegatus*)
within Joshua Tree National Park

0 0 0 10 Kilometers

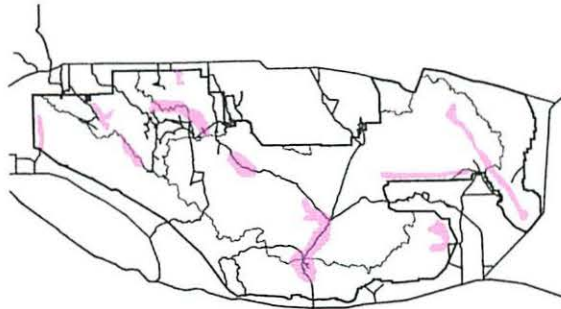
Desert Iguana (*Dipsosaurus dorsalis dorsalis*)



Probable distribution of the
Desert Iguana (*Dipsosaurus dorsalis dorsalis*)
within Joshua Tree National
Park

0 0 0 10 Kilometers

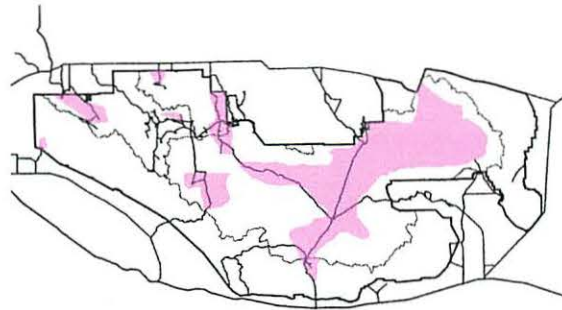
Mojave Collared Lizard (*Crotaphytus bicinctores*)



Probable distribution of the
Mojave Black-collared Lizard
(*Crotaphytus bicinctores*)
within Joshua Tree National Park

0 0 0 16 Kilometers

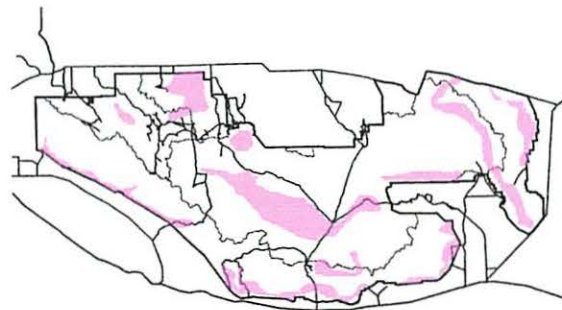
Long-nosed Leopard Lizard (*Gambelia wislizenii wislizenii*)



Probable distribution of the
Long-nosed Leopard Lizard
(*Gambelia wislizenii wislizenii*)
within Joshua Tree National Park

0 0 0 16 Kilometers

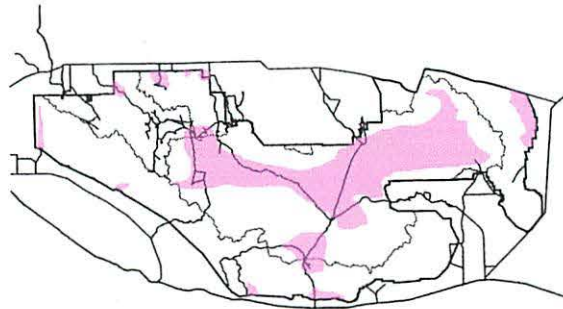
Western Chuckwalla (*Sauromalus obesus obesus*)



Probable distribution of the
Western Chuckwalla
(*Sauromalus obesus obesus*)
within Joshua Tree National Park

0 0 0 16 Kilometers

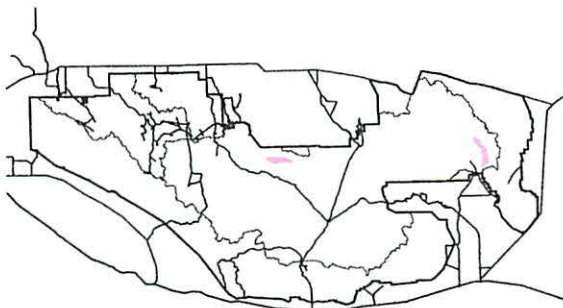
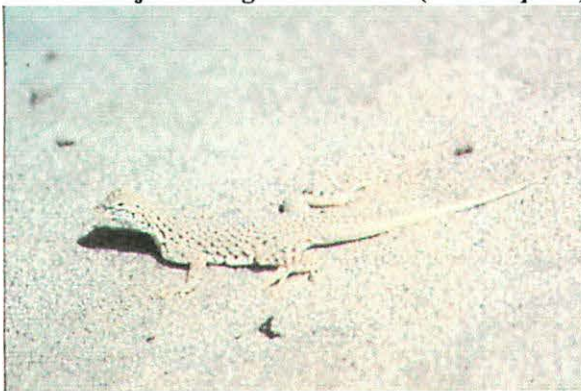
Mojave Zebra-tailed Lizard (*Callisaurus draconoides rhodostictus*)



Probable distribution of the Mojave Zebra-tailed Lizard (*Callisaurus draconoides rhodostictus*) within Joshua Tree National Park

0 0 0 10 Kilometers

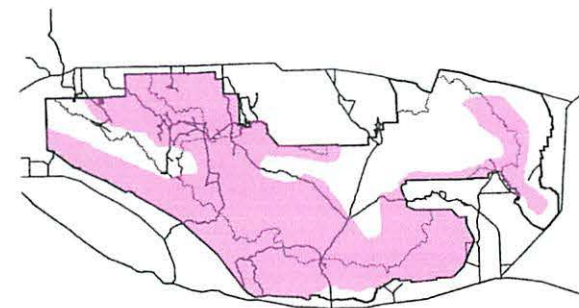
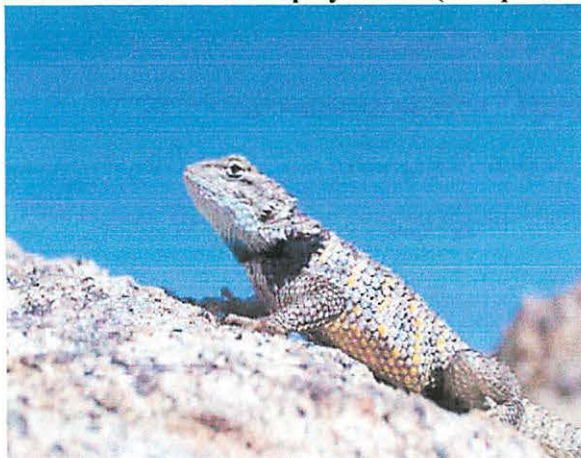
Mojave Fringe-toed Lizard (*Uma scoparia*)



Probable distribution of the Mojave Fringe-toed Lizard (*Uma scoparia*) within Joshua Tree National Park

0 0 0 10 Kilometers

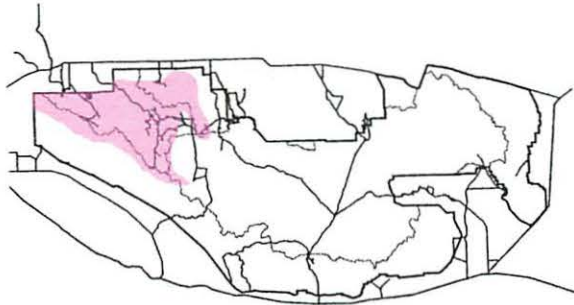
Yellow-backed Spiny Lizard (*Sceloporus magister uniformis*)



Probable distribution of the Yellow-backed Spiny Lizard (*Sceloporus magister uniformis*) within Joshua Tree National Park

0 0 0 10 Kilometers

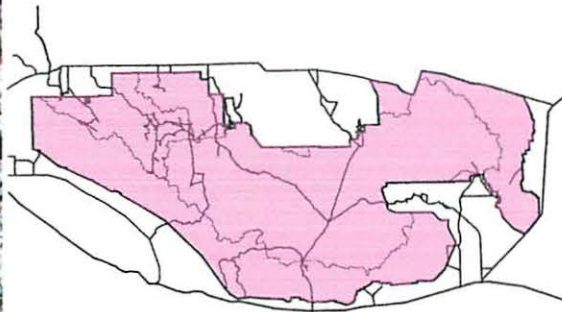
Great Basin Fence Lizard (*Sceloporus biseriatus longipes*)



Probable distribution of the Great Basin Fence Lizard (*Sceloporus biseriatus longipes*) within Joshua Tree National Park

0 0 0 10 Kilometers

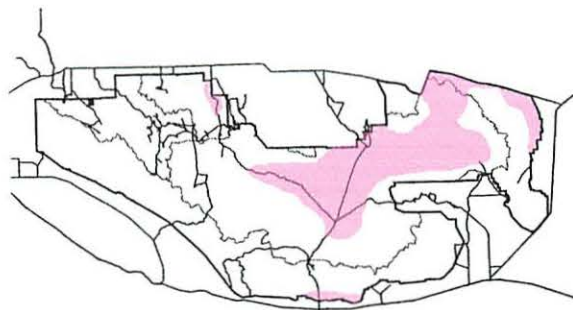
Desert Side-blotched Lizard (*Uta stansburiana stejnegeri*)



Probable distribution of the California Side-blotched Lizard (*Uta stansburiana stejnegeri*) within Joshua Tree National Park

0 0 0 10 Kilometers

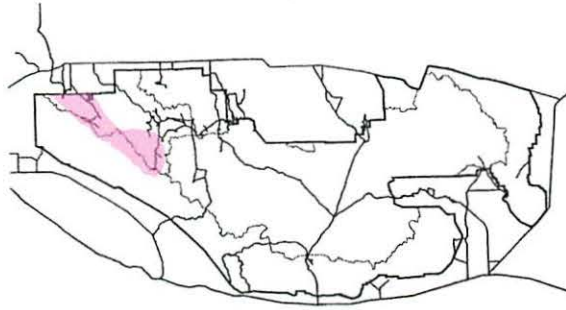
Western Brush Lizard (*Urosaurus graciosus graciosus*)



Probable distribution of the Western Brush Lizard (*Urosaurus graciosus graciosus*) within Joshua Tree National Park

0 0 0 10 Kilometers

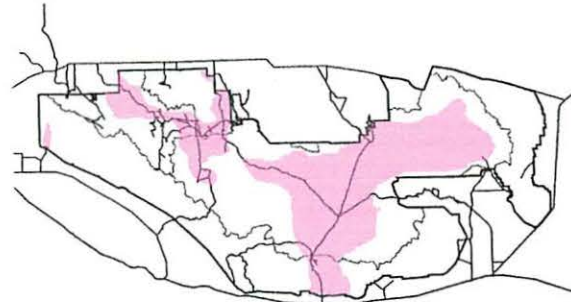
San Diego Horned Lizard (*Phrynosoma coronatum blainvillei*)



Probable distribution of the San Diego Horned Lizard (*Phrynosoma coronatum blainvillei*) within Joshua Tree National Park

0 0 0 15 Kilometers

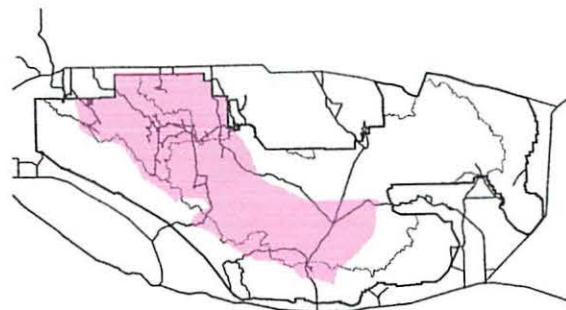
Southern Desert Horned Lizard (*Phrynosoma platyrhinos calidiarum*)



Probable distribution of the Southern Desert Horned Lizard (*Phrynosoma platyrhinos calidiarum*) within Joshua Tree National Park

0 0 0 15 Kilometers

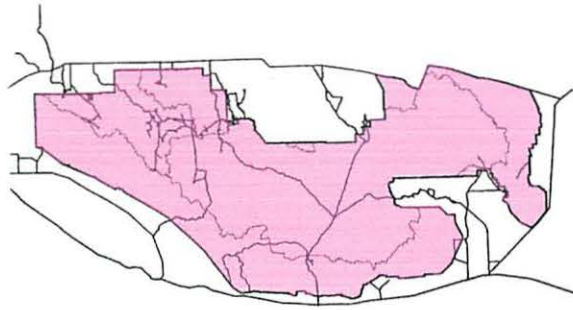
Desert Night Lizard (*Xantusia vigilis vigilis*)



Probable distribution of the Desert Night Lizard (*Xantusia vigilis vigilis*) within Joshua Tree National Park

0 0 0 15 Kilometers

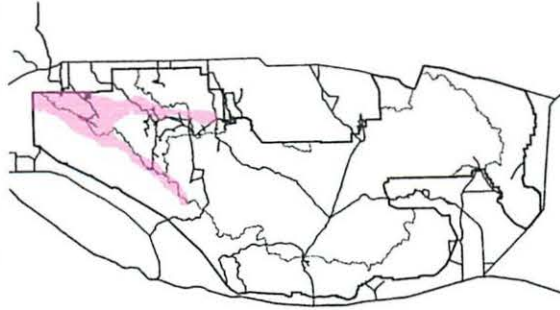
Great Basin Whiptail (*Cnemidophorus tigris tigris*)



Probable distribution of the Great Basin Whiptail (*Cnemidophorus tigris tigris*) within Joshua Tree National Park

0 0 0 10 Kilometers

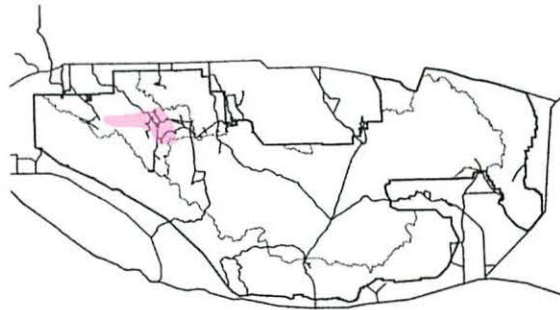
Western Red-tailed Skink (*Eumeces gilberti rubricaudatus*)



Probable distribution of the Western Red-tailed Skink (*Eumeces gilberti rubricaudatus*) within Joshua Tree National Park

0 0 0 10 Kilometers

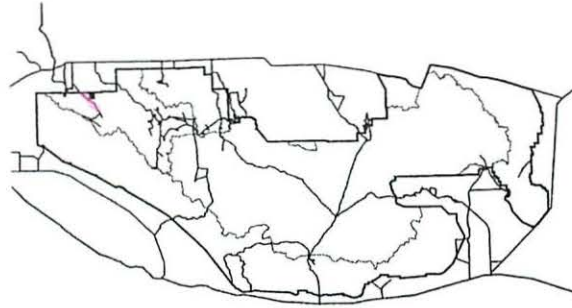
San Diego Alligator Lizard (*Elgaria multicarinata webbii*)



Probable distribution of the San Diego Alligator Lizard (*Elgaria multicarinata webbii*) within Joshua Tree National Park

0 0 0 10 Kilometers

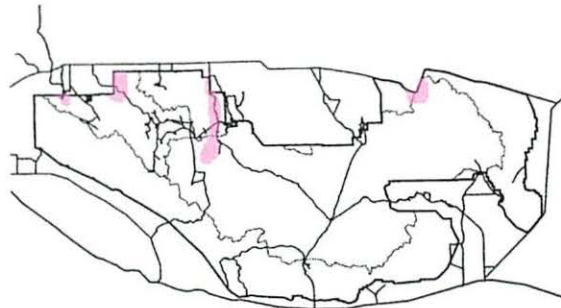
Silvery Legless Lizard (*Anniella pulchra pulchra*)



Probable distribution of the
Silvery Legless Lizard
(*Anniella pulchra pulchra*)
within Joshua Tree National Park

0 0 0 10 Kilometers

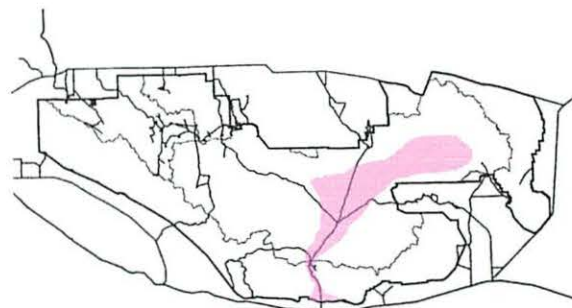
Southwestern Blind Snake (*Leptotyphlops humilis humilis*)



Probable distribution of the
Southwestern Blind Snake
(*Leptotyphlops humilis humilis*)
within Joshua Tree National Park

0 0 0 10 Kilometers

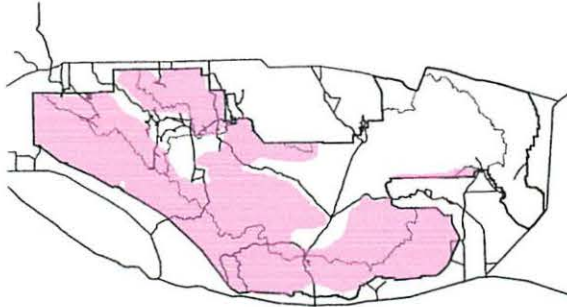
Desert Blind Snake (*Leptotyphlops humilis cahuilae*)



Probable distribution of the
Desert Blind Snake
(*Leptotyphlops humilis cahuilae*)
within Joshua Tree National Park

0 0 0 10 Kilometers

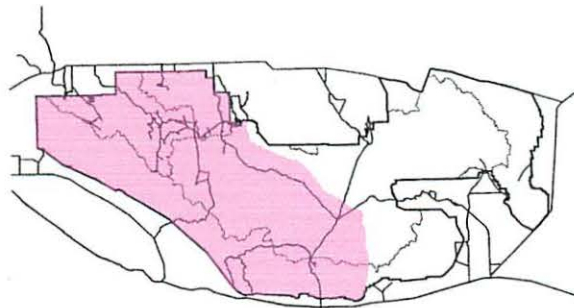
Desert Rosy Boa (*Lichanura trivirgata gracia*)



Probable distribution of the Desert Rosy Boa (*Lichanura trivirgata gracia*) within Joshua Tree National Park

0 9 18 Kilometers

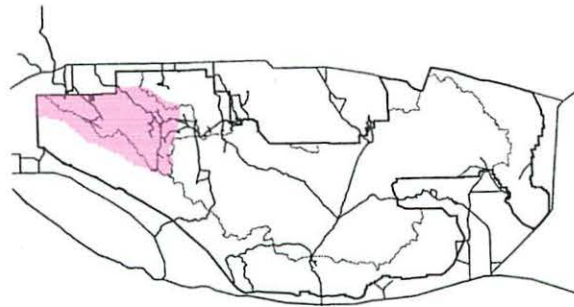
Red Coachwhip (*Masticophis flagellum piceus*)



Probable distribution of the Red Coachwhip (*Masticophis flagellum piceus*) within Joshua Tree National Park

0 9 18 Kilometers

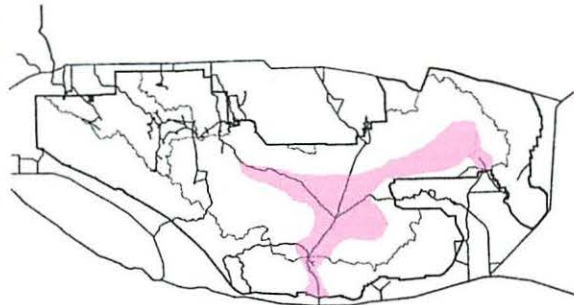
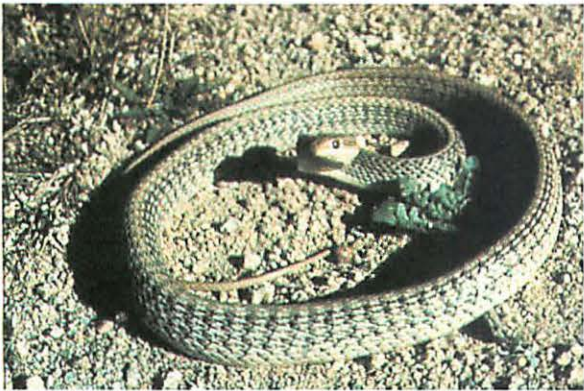
California Striped Racer (*Masticophis lateralis lateralis*)



Probable distribution of the California Striped Racer (*Masticophis lateralis lateralis*) within Joshua Tree National Park

0 9 18 Kilometers

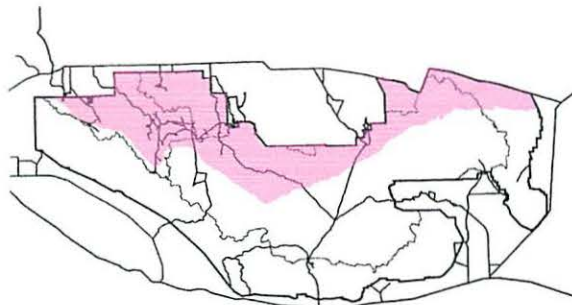
Desert Patch-nosed Snake (*Salvadora hexalepis hexalepis*)



Probable distribution of the
Desert Patch-nosed Snake
(*Salvadora hexalepis hexalepis*)
within Joshua Tree National Park

0 9 18 Kilometers

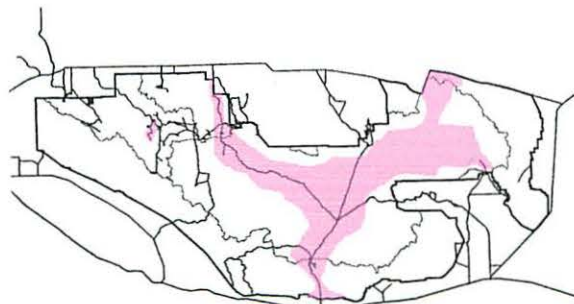
Mojave Patch-nosed Snake (*Salvadora hexalepis mojavenis*)



Probable distribution of the
Mojave Patch-nosed Snake
(*Salvadora hexalepis mojavenis*)
within Joshua Tree National Park

0 9 18 Kilometers

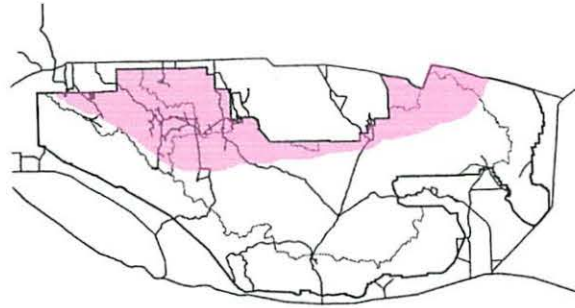
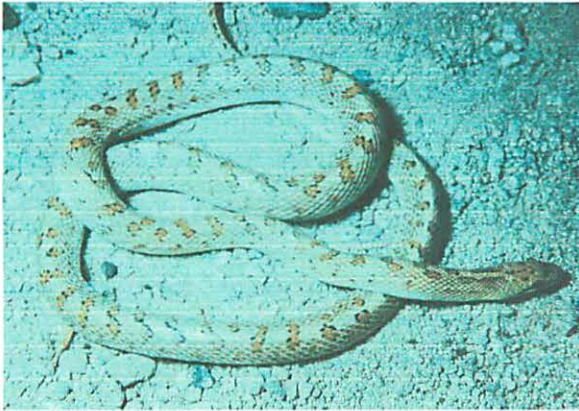
Western Leaf-nosed Snake (*Phyllorhynchus decurtatus perkinsi*)



Probable distribution of the
Western Leaf-nosed Snake
(*Phyllorhynchus decurtatus perkinsi*)
within Joshua Tree National Park

0 9 18 Kilometers

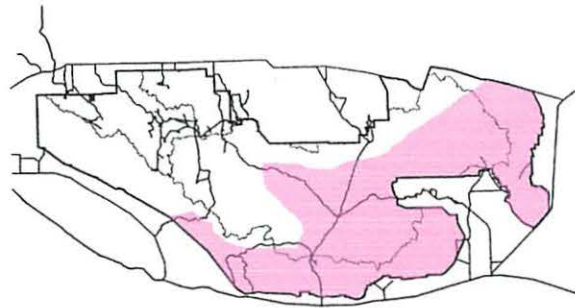
Mojave Glossy Snake (*Arizona occidentalis candida*)



Probable distribution of the Mojave Glossy Snake (*Arizona occidentalis candida*) within Joshua Tree National Park

0 9 18 Kilometers

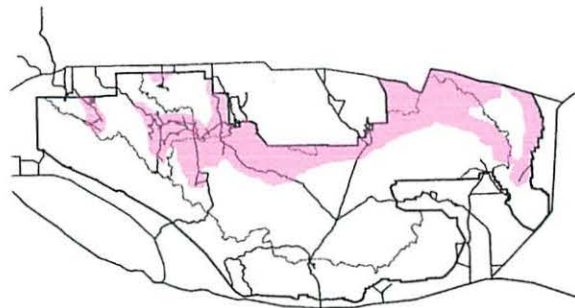
Desert Glossy Snake (*Arizona occidentalis eburnata*)



Probable distribution of the Desert Glossy Snake (*Arizona occidentalis eburnata*) within Joshua Tree National Park

0 9 18 Kilometers

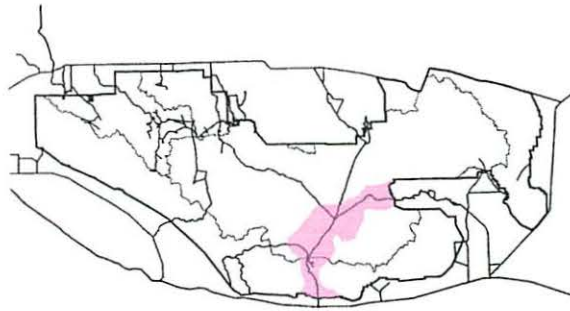
Desert Gopher Snake (*Pituophis catenifer deserticola*)



Probable distribution of the Desert Gopher Snake (*Pituophis catenifer deserticola*) within Joshua Tree National Park

0 9 18 Kilometers

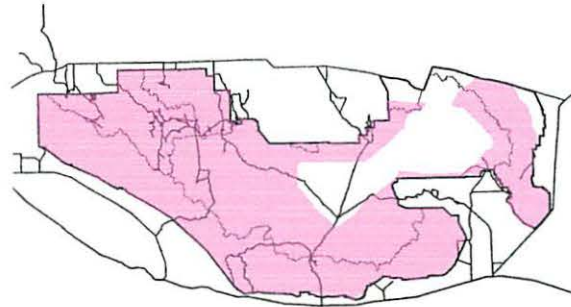
Sonoran Gopher Snake (*Pituophis catenifer affinis*)



Probable distribution of the Sonoran Gopher Snake (*Pituophis catenifer affinis*) within Joshua Tree National Park

0 9 18 Kilometers

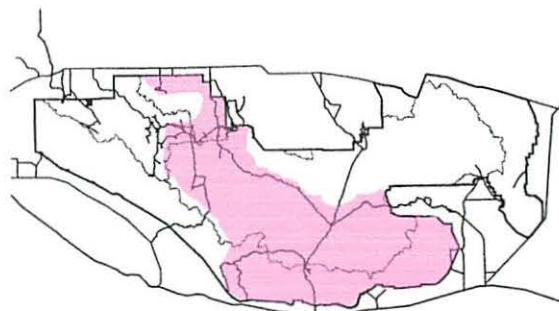
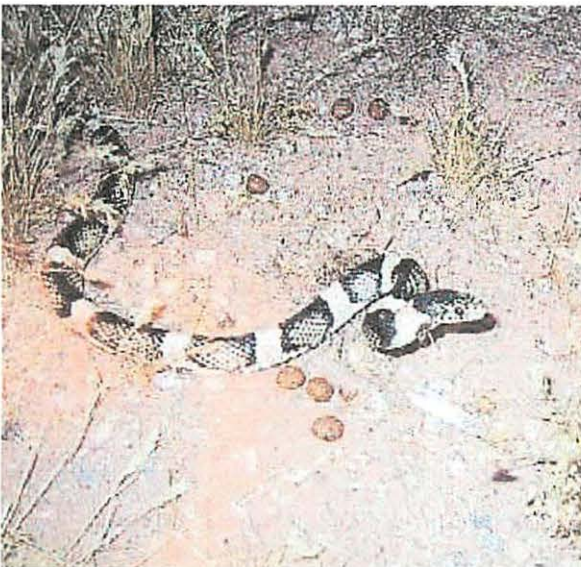
California Kingsnake (*Lampropeltis getula californiae*)



Probable distribution of the California Kingsnake (*Lampropeltis getula californiae*) within Joshua Tree National Park

0 9 18 Kilometers

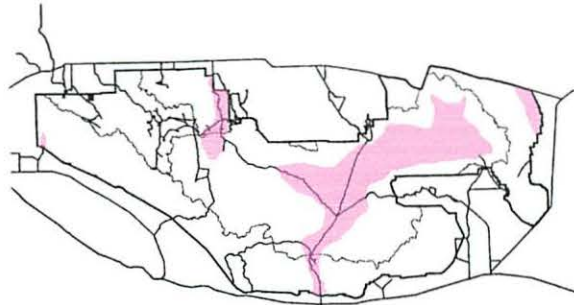
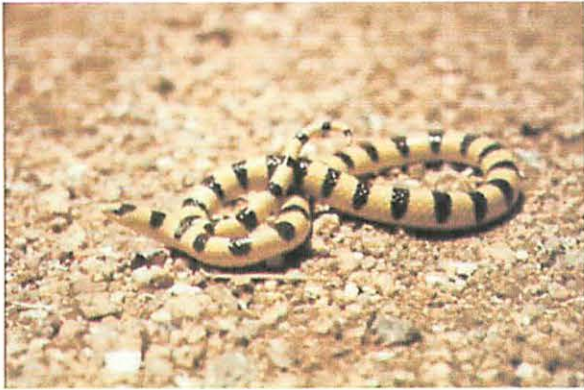
Western Long-nosed Snake (*Rhinocheilus lecontei lecontei*)



Probable distribution of the Western Long-nosed Snake (*Rhinocheilus lecontei lecontei*) within Joshua Tree National Park

0 9 18 Kilometers

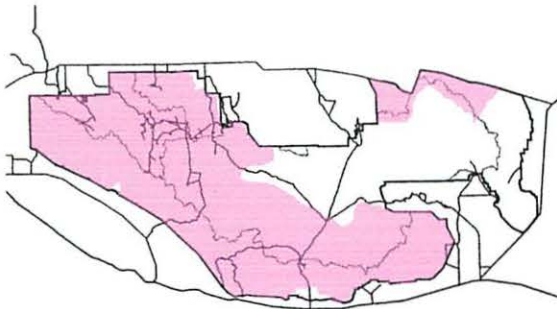
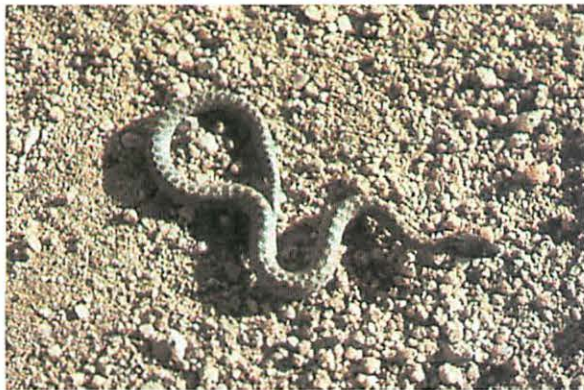
Mojave Shovel-nosed Snake (*Chionactis occipitalis occipitalis*)



Probable distribution of the Mojave Shovel-nosed Snake (*Chionactis occipitalis occipitalis*) within Joshua Tree National Park

0 0 9 18 Kilometers

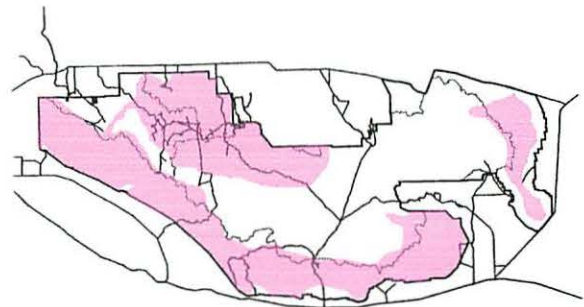
Desert Night Snake (*Hypsiglena torquata deserticola*)



Probable distribution of the Desert Night Snake (*Hypsiglena torquata deserticola*) within Joshua Tree National Park

0 0 9 18 Kilometers

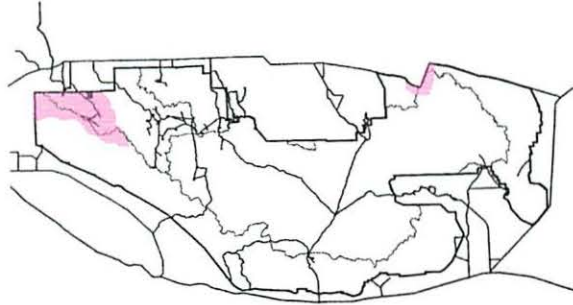
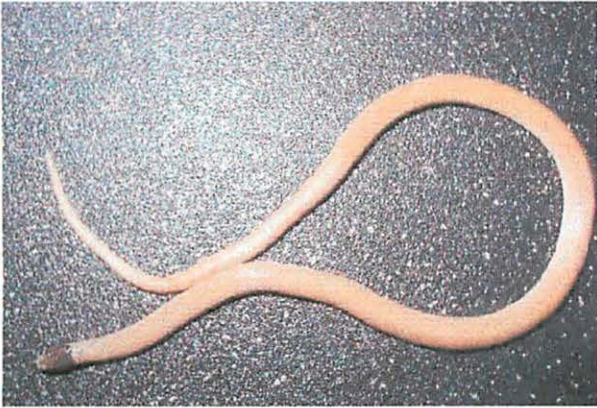
California Lyre Snake (*Trimorphodon biscutatus vandenburghi*)



Probable distribution of the California Lyre Snake (*Trimorphodon biscutatus vandenburghi*) within Joshua Tree National Park

0 0 9 18 Kilometers

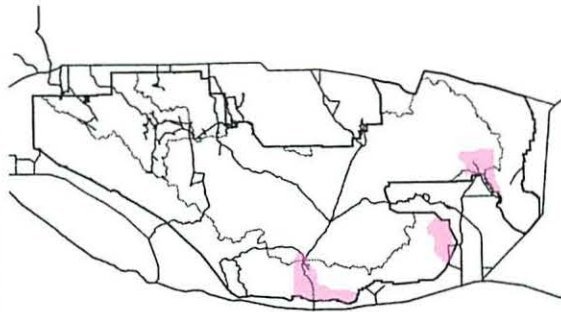
Southwestern Black-headed Snake (*Tantilla hobartsmithi*)



Probable distribution of the Southwestern Black-headed Snake (*Tantilla hobartsmithi*) within Joshua Tree National Park

0 0 9 18 Kilometers

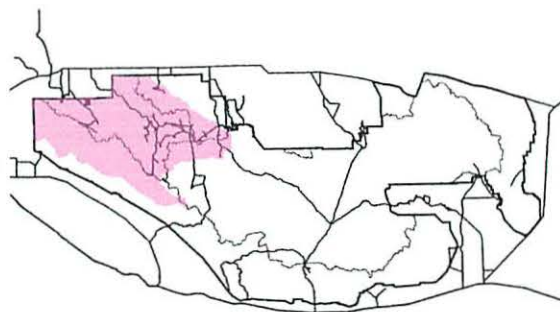
Western Diamondback Rattlesnake (*Crotalus atrox*)



Probable distribution of the Western Diamondback Rattlesnake (*Crotalus atrox*) within Joshua Tree National Park

0 0 9 18 Kilometers

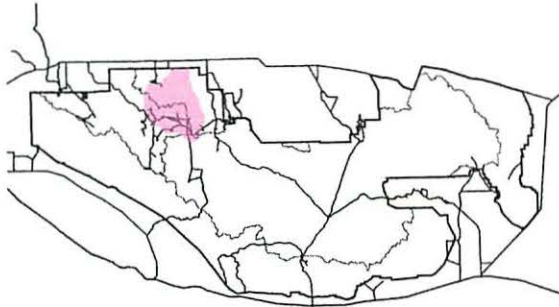
Southern Pacific Rattlesnake (*Crotalus oreganus helleri*)



Probable distribution of the Southern Pacific Rattlesnake (*Crotalus oreganus helleri*) within Joshua Tree National Park

0 0 9 18 Kilometers

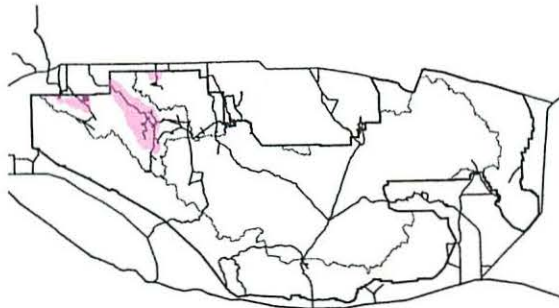
Red Diamond Rattlesnake (*Crotalus ruber ruber*)



Probable distribution of the Red Diamond Rattlesnake (*Crotalus ruber ruber*) within Joshua Tree National Park

0 9 18 Kilometers

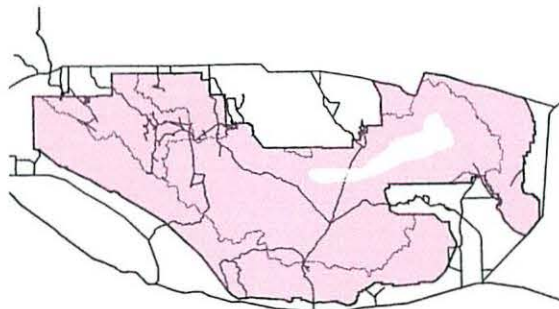
Mojave Rattlesnake (*Crotalus scutulatus scutulatus*)



Probable distribution of the Mojave Rattlesnake (*Crotalus scutulatus scutulatus*) within Joshua Tree National Park

0 9 18 Kilometers

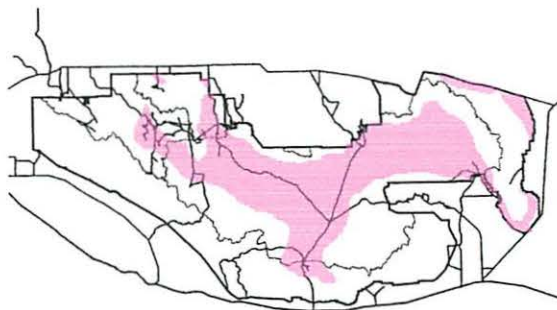
Southwestern Speckled Rattlesnake (*Crotalus mitchelli pyrrhus*)



Probable distribution of the Southwestern Speckled Rattlesnake (*Crotalus mitchelli pyrrhus*) within Joshua Tree National Park

0 9 18 Kilometers

Mojave Desert Sidewinder (*Crotalus cerastes cerastes*)



Probable distribution of the
Mojave Desert Sidewinder
(*Crotalus cerastes cerastes*)
within Joshua Tree National Park

0 9 18 Kilometers