

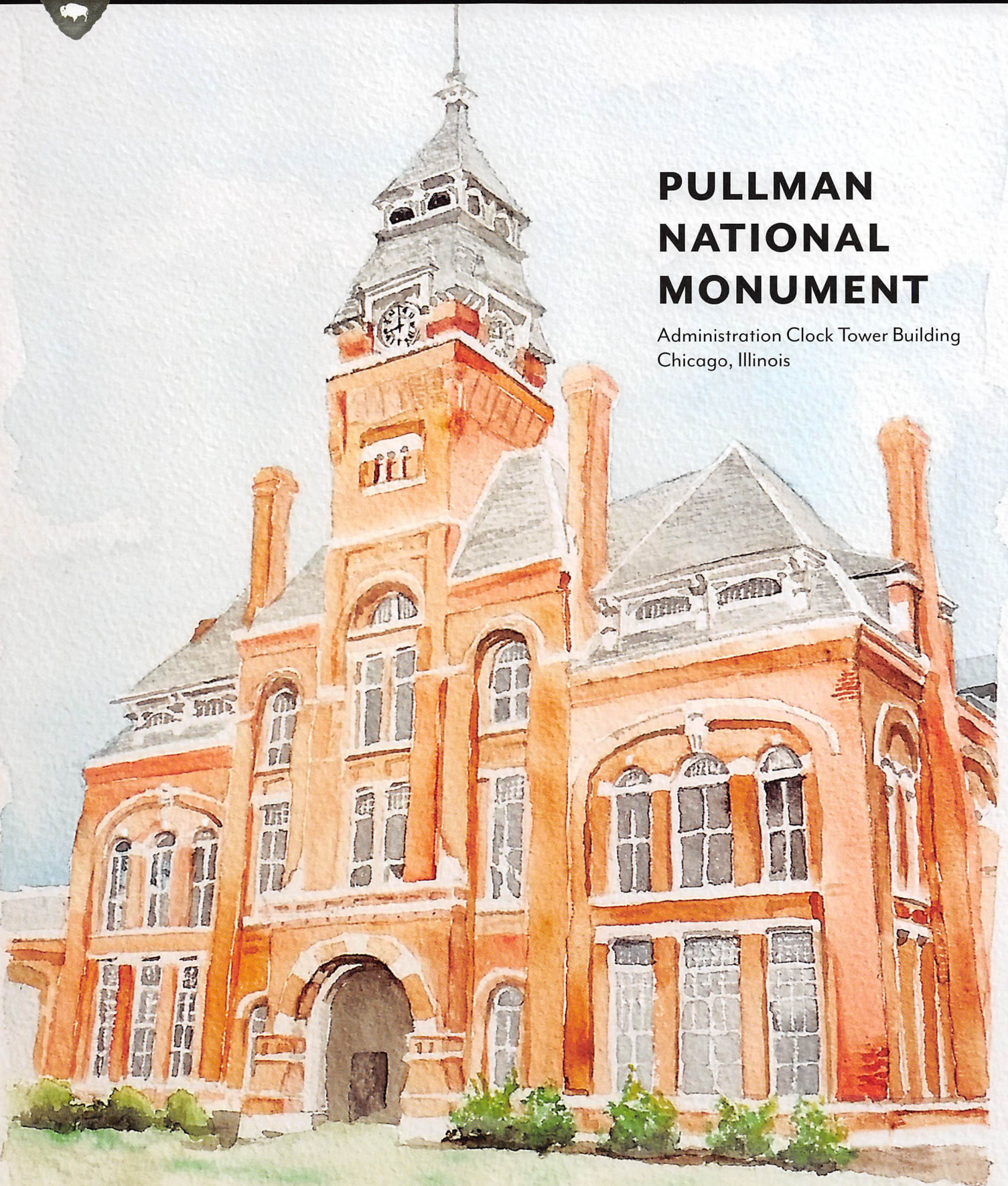


National Park Service
U.S. Department of Interior

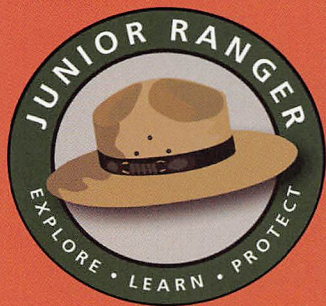
JUNIOR RANGER ACTIVITY BOOK

PULLMAN NATIONAL MONUMENT

Administration Clock Tower Building
Chicago, Illinois



PULLMAN WELCOME



Welcome to Pullman National Monument! This National Park Service site has a very special place in our nation's history. As you complete the activities in this book, you will learn about George Pullman and the historic Pullman district.

BECOME A JUNIOR RANGER

- ☐ Complete at least the same number of activities as your age. If you are over 10, complete all activities.
- ☐ Ask a friend, parent or ranger for help with the Pullman activities.
- ☐ Bring your completed Junior Ranger book to the Visitor Center. Have a ranger look it over, then take the oath and receive your badge.

ACTIVITY GUIDES



EASY



MEDIUM



CHALLENGING

JUNIOR RANGER PLEDGE

As a Junior Ranger, I _____,
promise to protect and preserve the plants, animals
and history of Pullman National Monument.
I will share what I have learned about
National Parks and will continue
to explore our national treasures!

Junior Ranger Signature



NATIONAL PARK SERVICE

National parks are special to everyone in the country – so precious that we all own them together. Pullman National Monument is one of these places. **Explore. Learn. Share.**



Our mission: Preserve and protect the resources and treasures of Pullman National Monument while providing an understanding of events that occurred here and their significance in the making of America.

PULLMAN NATIONAL MONUMENT

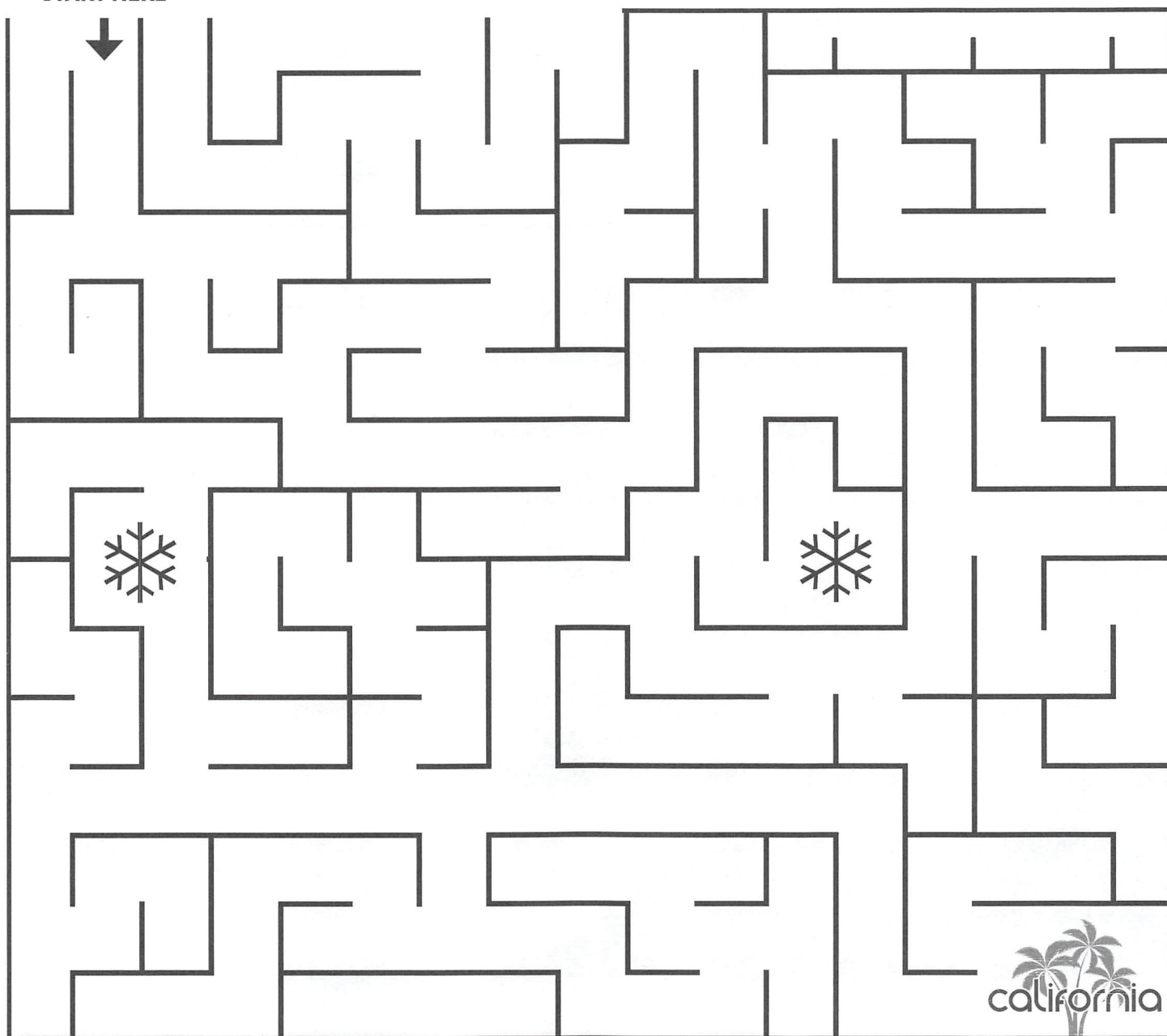
11141 S. Cottage Grove Avenue
Chicago, IL 60628

For more information about Pullman National Monument, our programs or planning your trip, ask one of our rangers, visit us online at www.nps.gov/pull or call (773) 468-9310.

PULLMAN PUZZLER



The Pullman company got an order for 10 rail cars. **The challenge:** The passenger cars just came off the assembly line in Chicago and need to be delivered to Sacramento in seven days. **The problem:** Snowstorms in the Rockies have made the Colorado train lines impassable. Help Pullman get the cars to California on time.

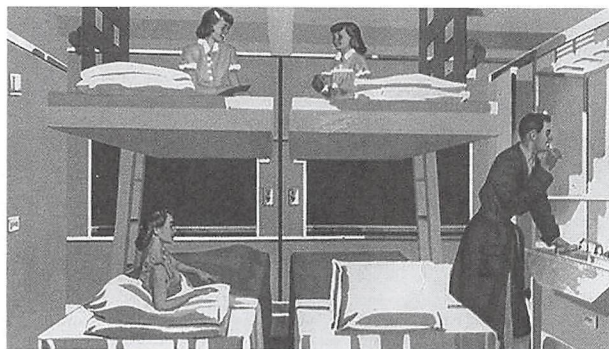


PULLMAN PUZZLER

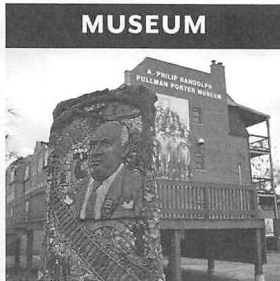
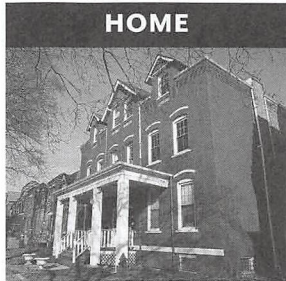
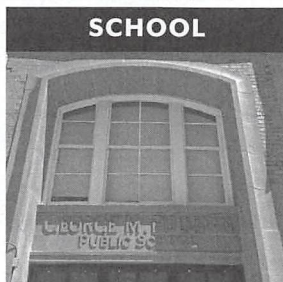
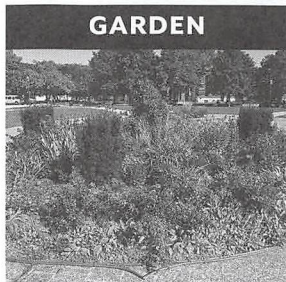
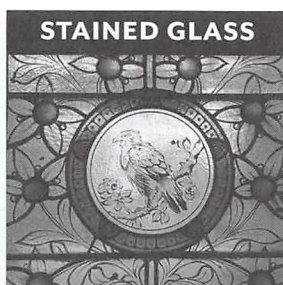
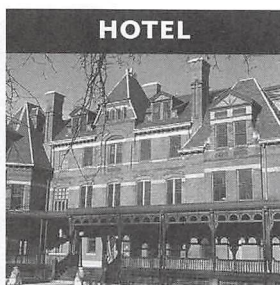
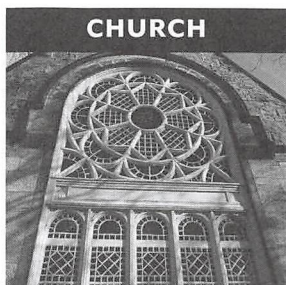
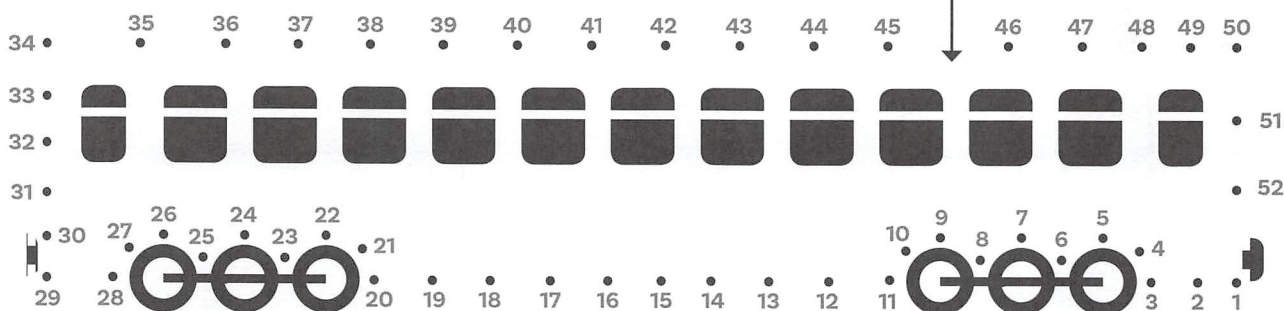


CONNECT THE DOTS

By the 1950s, families traveling in a Pullman Sleeping Car enjoyed all the luxuries of home. Connect the dots below to your Pullman Sleeping Car and list four things in the picture (right) that you have in your home.



1. _____ 3. _____
2. _____ 4. _____



PULLMAN BINGO

As you explore Pullman National Monument, look for the items pictured here. Cross off three in a row, across, down or diagonally, and shout B-I-N-G-O! You can even try to get them all!

DID YOU KNOW?

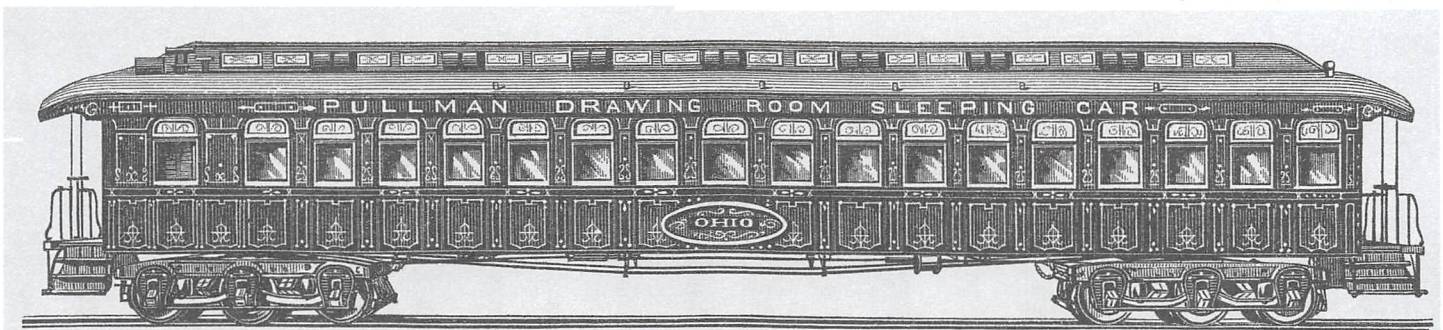
The Pullman community had 1,300 structures that included houses, churches, theaters, shopping areas, parks, a hotel and library for its employees.

PULLMAN RAIL CARS



FIRST HOTEL ON WHEELS

With his own fortune and that of his investors, George Pullman created his first hotel on wheels, the President, a sleeper with an attached kitchen and dining car. The food rivaled the best restaurants of the day and the service was impeccable. A year later in 1868, he launched the Delmonico, the world's first sleeping car devoted to fine cuisine. The President, Delmonico and following sleeper cars offered first-rate service.



TRAIN CARS WORD MATCH

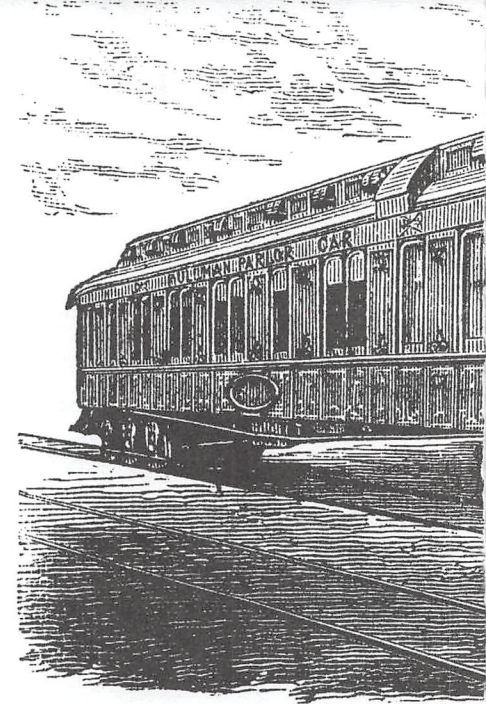
Match the train name to the Pullman car description.

- | | |
|-----------------------|--|
| 1. SPRINGFIELD | A The world's first sleeping car devoted to fine cuisine. |
| 2. PIONEER | B A sleeper car with attached kitchen and dining car. |
| 3. PRESIDENT | C 1907 steel sleeping car. |
| 4. DELMONICO | D Built in 1865, the sleeping cars featured red carpeting. |
| 5. JAMESTOWN | E 1863 rail car named after the town where it was built – and Lincoln's hometown. |

PULLMAN TIMELINE

TAKE A RIDE THROUGH HISTORY ...

Pullman National Monument is the story of American opportunity. In a growing Chicago neighborhood, diverse people and stories intertwine. All were seeking opportunity. Some succeeded. Others were limited – by race, gender or economic status. Their stories came together in Pullman, a planned community famous for its urban design and architecture. Here's a snapshot capturing the key milestones along the way. Circle the three most fascinating things you learned today.



1831: George Mortimer Pullman is born in New York.

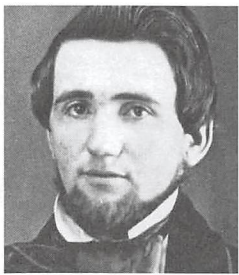
1863: George Pullman returns to Chicago, proceeding to unveil the Springfield and Pioneer.

1869: The Pullman Palace Car Company is approved by the Illinois Legislature.

1868: The Delmonico is unveiled.

1898: After the state of Illinois files for bankruptcy, the Pullman Company is forced to divest owned property. Pullman homes could now be purchased.

1855: George Pullman moves to Chicago.



1862: George Pullman moves to Colorado during the Civil War to operate a general store.



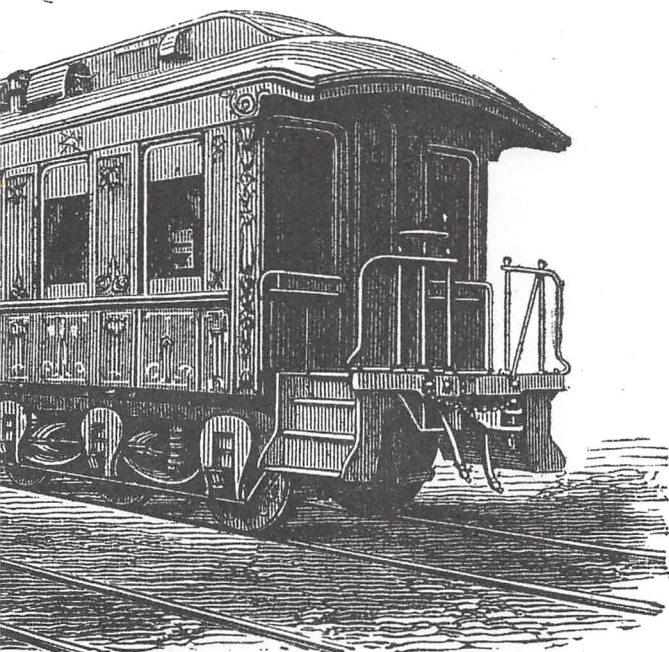
1867: George Pullman creates a hotel on wheels – the President – with an attached full-service kitchen and dining car.

1880: George Pullman buys 4,000 acres near Lake Calumet for \$800,000.

1881: The factory town of Pullman, Illinois with 531 company houses is dedicated.



1894: 4,000 Pullman workers go on strike for higher wages. Several workers are killed during the strike.



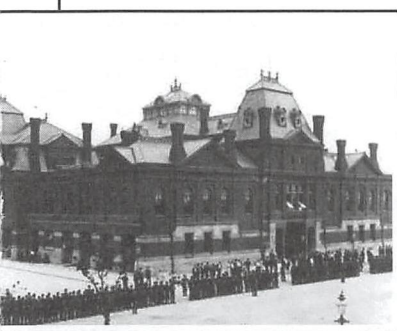
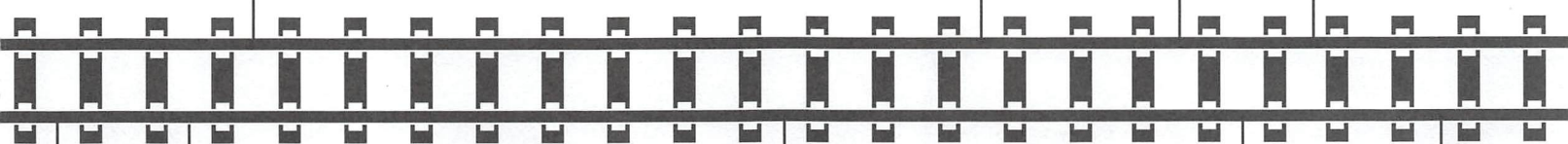
ed suit, the Illinois the Supreme Court forced the
rship in the town, which was annexed to Chicago.
chased.

1971: The Pullman Historic District is declared a local, state and national landmark to protect the original 900 rowhouses and public buildings.

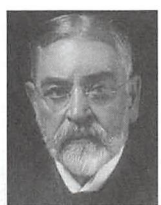


1960: The Pullman community is threatened with total demolition to make way for an industrial park. Residents form the Pullman Civic Organization, which lobbies the city to save their community.

1982: Pullman Car Works closes.



000 workers at Pullman's Chicago
gin a strike in response to a reduction
The strike expands to include all trains
a Pullman car. More than 250,000
27 states are effected. Thirty are
ng the riots that follow.



1897: George Pullman dies and Robert Todd Lincoln assumes presidency of Pullman Palace Car Company.

1947: The U.S. Department of Justice forces the Pullman Company to sell one of its two divisions – either manufacturing or sleeping car operations.

1977: The Pullman Company reports annual revenues of \$2 billion and employs 32,000 people nationwide.



2015: President Barack Obama creates the nation's newest park – Pullman National Monument.



WHO'S WHO AT PULLMAN ...

Draw a line to match the picture to description.



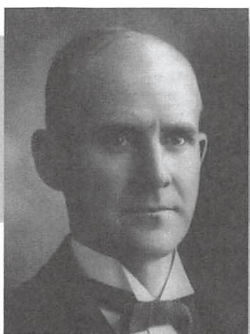
1. GEORGE MORTIMER PULLMAN | 1831-1897

An American industrialist who created a market for high-end sleeping and dining rail cars.



2. SOLON SPENCER BEMAN | 1853-1914

Best known as a Chicago architect who planned the Pullman community and factory complex.



3. NATHAN F. BARRETT | 1845-1919

Selected by George Pullman to create a landscape plan that included fountains, lakes and areas of interest at the model Pullman community.



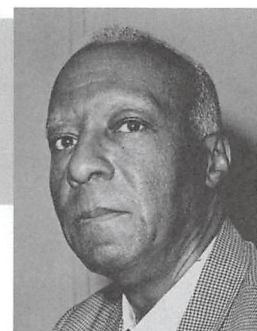
4. ROBERT TODD LINCOLN | 1843-1926

The son of President Abraham Lincoln and the man who took over after George Pullman died.



5. FLORENCE PULLMAN LOWDEN | 1868-1937

One of George Pullman's two daughters and namesake of the famed Hotel Florence.



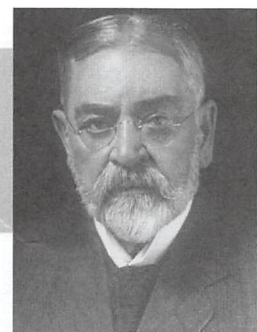
6. EUGENE DEBS | 1855-1926

An American union leader who organized Pullman workers during a work stoppage that affected more than 250,000 workers in 27 states.



7. A. PHILIP RANDOLPH | 1889-1979

Founder and first president of the Brotherhood of Sleeping Car Porters, the first officially recognized black union.



8. BARACK OBAMA | 1961-

The 44th president of the United States and the first African American to hold the highest office in the land. In 2015, Obama designated Pullman as a national monument, protected by the National Park Service.

PULLMAN STRIKE



THE BIRTH OF LABOR DAY ...

Help tell our story by filling in the blanks with these words:

- | | |
|---------------------|----------------|
| 1. 1894 | 6. Pullman |
| 2. Grover Cleveland | 7. Chicago |
| 3. New York | 8. Eugene Debs |
| 4. Strike | 9. 1893 |
| 5. Rent | 10. Recession |

Did you ever wonder how Labor Day began?

Although the idea of celebrating American workers got its start in _____, the official holiday was established in the aftermath of a bloody strike that began at Pullman.

PLACE

All was well in Pullman until _____, when a _____ swept the country. After the demand for sleeper cars declined, George Pullman lowered wages but left the _____ unchanged for workers living in Pullman. In response, employees began walking off the job.

YEAR

EVENT

ITEM

_____ and the American Railway Union (ARU) picked up the cause. Soon, railroad workers across the United States boycotted trains that carried _____ cars.

NAME

NAME

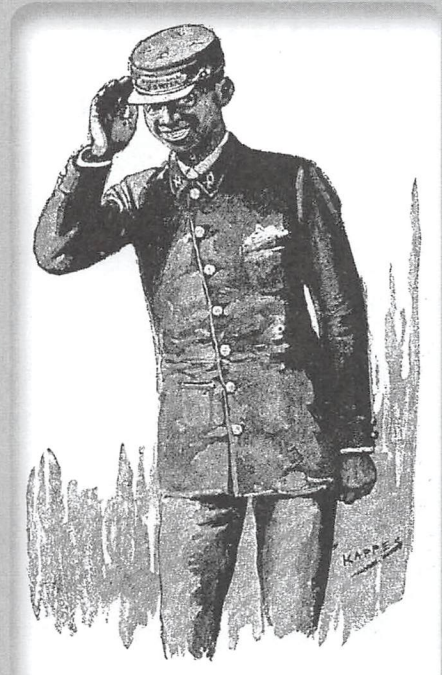
President _____ said the strike was illegal and sent the military to break it. Two men were killed in _____. More than 30 died nationwide.

NAME

PLACE

In order to calm the national discord, the president rushed Labor Day legislation through Congress. It passed unanimously on June 28, _____, six days after the end of the Pullman _____.
EVENT

YEAR



THE FIRST UNION

After the Civil War, recently emancipated African Americans found paid work with the Pullman company. Many former slaves became the first Pullman Porters, who had a long struggle for the same voice and rights as other Pullman workers. With the help of A. Philip Randolph, they became the Brotherhood of Sleeping Car Porters – the first African American union to win a contract for better wages and promotion. Those Pullman Porters are widely credited with contributing to the black middle class.



LIFE IN PULLMAN ...

When George Pullman went to sleep at night, he dreamed big. He envisioned a city for workers that provided for their daily needs – and their futures. It didn't take long for his dream to come true.

Pullman workers didn't have to go far to get what they needed – the world came to them.



Nearby farmers brought produce and milk to the Pullman Market. The Pullman Arcade had shops where you could buy shoes, clothes, china, furniture, jewelry – even pots and pans. If you needed

a dress or a new suit, the Arcade had tailors and dressmakers. When you needed a haircut, there were barbers. Doctors and dentists had offices there, too.

A theatre provided entertainment: the Pullman library had 6,000 books, many from the Pullman family home.

While many Chicago children went to work when they were as young as six, Pullman children got to go to schools in their neighborhood. Their first school was in Market Hall – until 1883 when a new school building at Pullman Avenue and 113th Street was complete. Soon, the schools had classes for children during the day and adults at night.



Everyone in your family was young once, but childhood today is very different from what it was a century ago. What did kids do for fun back then? Circle the activities children may have enjoyed while growing up in Pullman.

- | | |
|----------------|--------------------|
| 1. READING | 6. HOOP & STICK |
| 2. WRITING | 7. SCUBA DIVING |
| 3. VIDEO GAMES | 8. LISTEN TO MUSIC |
| 4. MARBLES | 9. JUMPING ROPE |
| 5. WATCHING TV | 10. TOY SOLDIERS |

What do you like to do for fun? List five activities that you enjoy and circle yes or no if that activity existed during the 1800s.

- | | | |
|----------|-----|----|
| 1. _____ | YES | NO |
| 2. _____ | YES | NO |
| 3. _____ | YES | NO |
| 4. _____ | YES | NO |
| 5. _____ | YES | NO |

PULLMAN NATIONAL MONUMENT



EXPLORING PULLMAN ...

The Junior Ranger Program invites you to explore at least two historic Pullman buildings and landscapes and **circle them on this map**.

PLEASE NOTE ...

People live, work and sleep here. Thank you for being a respectful visitor to this historic community!

PULLMAN NATIONAL MONUMENT JUNIOR RANGER

This certifies that

has completed the requirements of the Junior Ranger
Program at Pullman National Monument and has learned
about the park and the responsibilities of a Junior Ranger.

Park Ranger

Date

