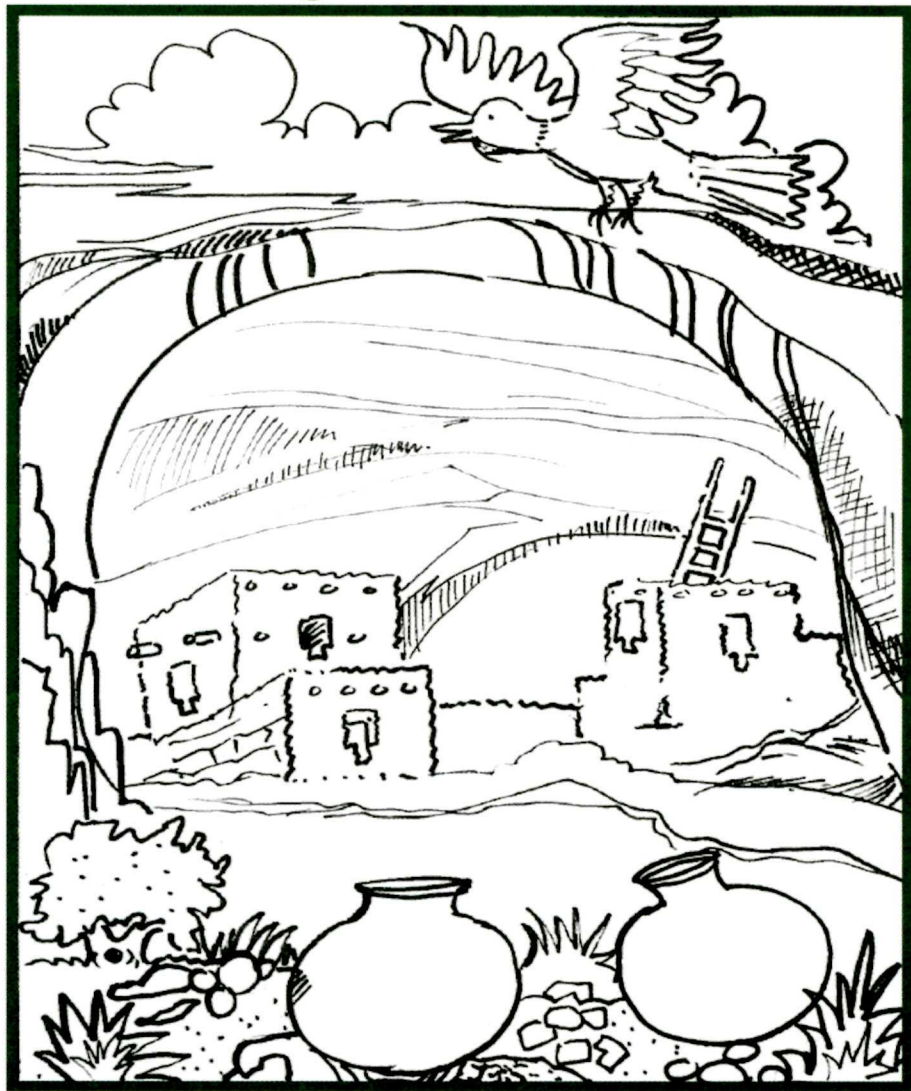


# Junior Ranger Activity Booklet

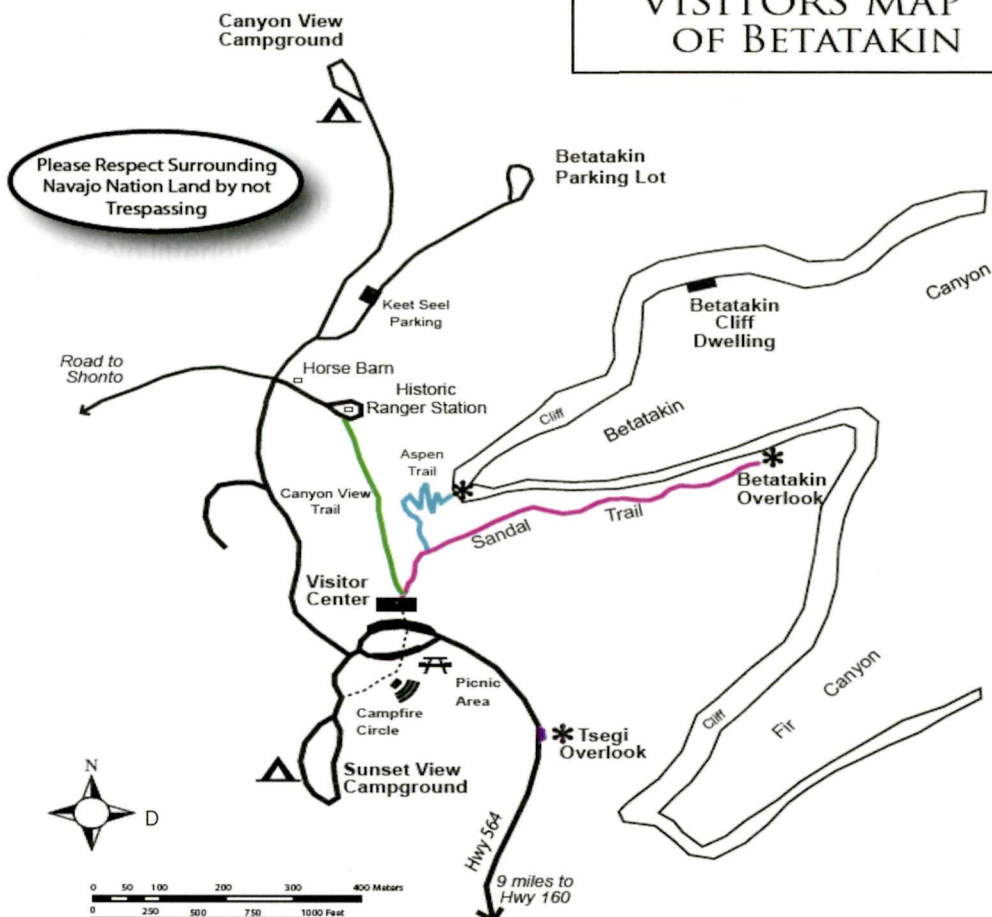


## Navajo National Monument

# NATIONAL PARK SERVICE NAVAJO NATIONAL MONUMENT



## VISITORS MAP OF BETATAKIN



- Sandal Trail:** Most popular trail in park. Easy paved path providing cross-canyon views into Betatakin Dwelling. *Distance one way: 0.62 mile.*
- Canyon View Trail:** Easy walk offering panoramic vistas of Tsegi Canyon System. Trail ends at the historic Ranger Station. Round-trip *0.41 mile.*
- Aspen Trail:** Strenuous hike providing overview of natural resources, including spectacular relict forest in Betatakin Canyon. *Distance one way: 0.32 mile.*
- Tsegi Overlook:** Short, easy walk to overlook from entrance road. Waypoint exhibit highlights the geology of the region. No cliff dwellings are viewable from this overlook. *Distance 0.1 mile south of the Visitor Center.*

# Loloma

(Hopi Greeting)

# Yá'át'ééh

(Navajo Greeting)

## Welcome to Navajo National Monument



## Junior Ranger Program

Thank you for coming to visit our park. On the bottom of this page, find the animal that is associated with your age group to learn the number of points you need to collect to earn a junior ranger badge. Each activity in this book earns you a certain number of points after completion.

The activities can be done by hiking the self-guided trails, joining a ranger guided cliff dwelling tour, watching movies in the auditorium, and visiting the museum.



1–5 Years Old

5 Points



6–10 Years Old

10 Points



11–15 Years Old

15 Points



15+ Years Old

20 Points

# Park Rules

Follow these simple rules to have a safe and fun visit while helping protect the park for the enjoyment of future visitors.

1. Stay on the trail.
2. Listen to the rangers.
3. No littering. Please throw trash in garbage cans and recycle bins.
4. No running or yelling in the park.
5. Leave it be! Do not pick up items including plants and rocks.
6. Leave no trace! Make sure things are left the way you saw them.

## Stretch!

Always stretch before hitting the trail to avoid injuries. Follow the pictures below with your family to get everyone involved!

Lift one leg for 10-15 seconds each.



Raise your left arm high for 10-15 seconds then repeat with the right arm.



Take one step forward and bend your legs for 10-15 seconds then switch and repeat.





# Leave No Trace!

When visiting national parks, it is important to think of your safety, the wildlife, and other people who will visit after you.

*Fill in the blanks and try your best to follow these hiking guidelines.*

When you walk on the trails, always pack out your \_\_\_\_\_.

Do not yell from the overlooks or throw \_\_\_\_\_ in the canyon.  
This could frighten wildlife or hikers in the canyon.

Never \_\_\_\_\_ the animals, even if they look hungry.  
Human food is not good for them.

Stay on the \_\_\_\_\_ when hiking with your family.

Plan ahead by having a \_\_\_\_\_ so you don't get lost.

Observe \_\_\_\_\_ from a distance. Don't try to catch the lizards.

## Word Bank

Map

Feed

Rocks

Trash

Trail

Wildlife

2 pts

# Upper Canyon Trails

- Take a Discovery Hike on the Sandal Trail. Write down what you:

See: 1) \_\_\_\_\_ 2) \_\_\_\_\_

3 pts

Hear: 1) \_\_\_\_\_ 2) \_\_\_\_\_

Smell: 1) \_\_\_\_\_ 2) \_\_\_\_\_

What do you see at the end of the trail? \_\_\_\_\_

- Take a Discovery Hike on the Aspen Trail. Write down what you:

See: 1) \_\_\_\_\_ 2) \_\_\_\_\_

4 pts

Hear: 1) \_\_\_\_\_ 2) \_\_\_\_\_

Smell: 1) \_\_\_\_\_ 2) \_\_\_\_\_

What do you see at the end of the trail? \_\_\_\_\_

- Take a Discovery Hike on the Canyon View Trail. Write down what you:

See: 1) \_\_\_\_\_ 2) \_\_\_\_\_

2 pts

Hear: 1) \_\_\_\_\_ 2) \_\_\_\_\_

Smell: 1) \_\_\_\_\_ 2) \_\_\_\_\_

What do you see at the end of the trail? \_\_\_\_\_

# Betatakin Cliff Dwelling Tour

If you have the time and chance to join a guided Betatakin tour, please fill out this page.

Tours to Betatakin leave daily from Memorial Day to Labor Day at 8:15am and 10:00am. Hikes are 3-5 miles in length and take about 3-5 hours.

If you are interested in joining a tour, please check with the front desk for availability.

**Safety:** What does the ranger/guide tell you in order to have a fun and safe hike?

- 1)
- 2)

**Geology:** What are the two primary rock formations that make up Betatakin Canyon?

- 1)
- 2)

**Plants:** What are a few of the plants identified by the ranger during your hike?

- 1)
- 2)
- 3)

**Food:** What food did the Ancient Puebloan grow in the canyons?

- 1)
- 2)
- 3)

**Cliff Dwelling:** List a few things you learned about the site such as when people lived in Betatakin, the materials used to construct a room of the village, and/or the definition of a kiva.

- 1)
- 2)
- 3)

**People:** Name the four clans that are said to have lived in Betatakin:

- 1)
- 2)
- 3)
- 4)

Park Ranger Signature: \_\_\_\_\_

20 pts



Artist: John Bahe Smith

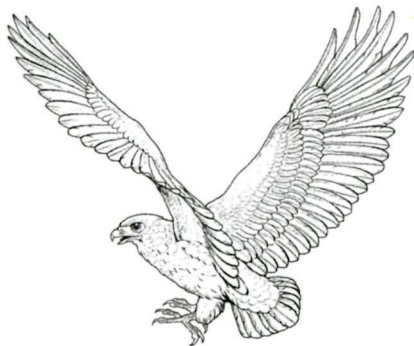
1 pt



# Animal Tracker

The natural and cultural resources in the park are protected including the wildlife. As you hike on the trails look for animals in the park.

You may notice animal tracks located off the trails but please stay on the trail because the soil needs to be protected too. Stepping on soil crusts negatively effects hundreds of living organisms and escalates the process of erosion.



**Animal:** \_\_\_\_\_

**Evidence/Location:** \_\_\_\_\_  
\_\_\_\_\_  
\_\_\_\_\_

**Animal:** \_\_\_\_\_

**Evidence/Location:** \_\_\_\_\_  
\_\_\_\_\_  
\_\_\_\_\_

**Animal:** \_\_\_\_\_

**Evidence/Location:** \_\_\_\_\_  
\_\_\_\_\_  
\_\_\_\_\_



**Animal:** \_\_\_\_\_

**Evidence/Location:** \_\_\_\_\_  
\_\_\_\_\_  
\_\_\_\_\_  
\_\_\_\_\_  
\_\_\_\_\_  
\_\_\_\_\_

2 pts

# Plant Matching

As you walk along the Sandal Trail, read the signs about the plants found in the area. Then match the description on the left to the plant on the right.

This plant sometimes helps with colds and headaches.

This plant can be eaten fresh or dry.

Waterproofing baskets and fixing pots are two of what this plant can provide.

The leaves of this plant are used to treat eye infections in sheep.

The branches are best known for making the shaft of an arrow.

The plant with pointed tips provides many uses, including shampoo.

Drinking a hot brew of this could help with kidney afflictions.

This tree's trunk and branches were used as roof beams in the Betatakin cliff dwelling.

Broad Leaf Yucca

Sage Brush

Mormon Tea

Pinyon Tree

Prickly Pear Cactus

Cliff Rose

Utah Juniper

Round Leaf Buffalo Berry



**Attention:**

Never create your own medicine of teas on your own.  
If not prepared correctly, the plants can be dangerous.

4 pts

# Don't Bust the Crust!!

Read about the crypto biotic soil in the *Living Soil* Area of the museum (a park employee will be happy to show you where to find it).

Answer the questions and walk the trails to identify the living soil.

What does the living soil look like in the southwest?

How deep can the soil measure?

How can the soil be killed?



The black crust-like mounds on the soil are called crypto biotic soil.



Where do you see the living soil growing in the park?

How many patches of living soil do you see?

Why is it important to stay on the trail even if you don't see evidence of living soil?

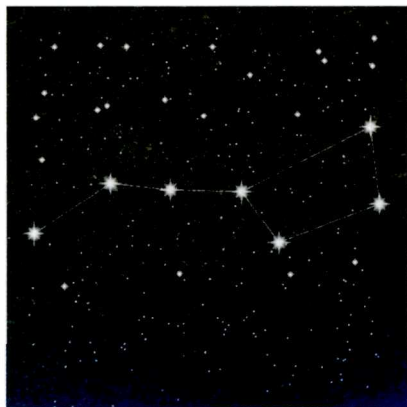
3 pts



# Night Sky Activity

Parks like Navajo National Monument work to protect not only the cliff dwellings and the wildlife, but also the night sky. If you stay overnight at one of our campgrounds, take some time to enjoy the night sky.

Campground you stayed at: \_\_\_\_\_



The Big Dipper

Constellations you saw/recognized:

---

---

---

---



ATSE ETS'OZI (NAVAJO)  
THE FIRST SLENDER ONE  
ORION

Draw your own star constellation.

While many cultures have stories about star constellations, they differ in how they tell them.. In Navajo culture, star stories are only told during the winter.

3 pts



# Pottery Find

The pots that the people of this region made were very high quality. A few types of pottery were traded to other people for jewelry, flint, and macaw birds.



Corrugated



Black on White

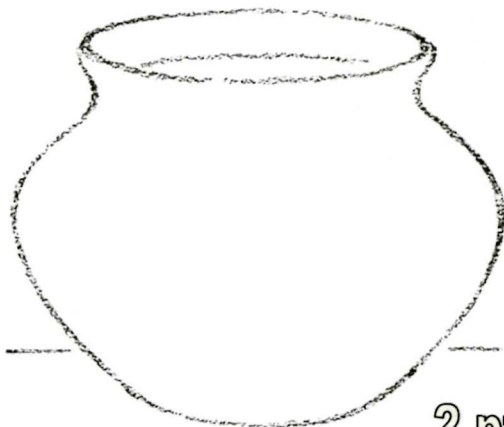


Keet Seel Polychrome

***Explore the museum and look at the different types of pottery.***

- How many different colors of pottery can you find? \_\_\_\_\_
- Find the smallest pot. What do you think the pot was used for?  
\_\_\_\_\_
- Find the largest pot. What do you think the pot was used for?  
\_\_\_\_\_

**Create your own  
pottery design on  
the blank pot.**

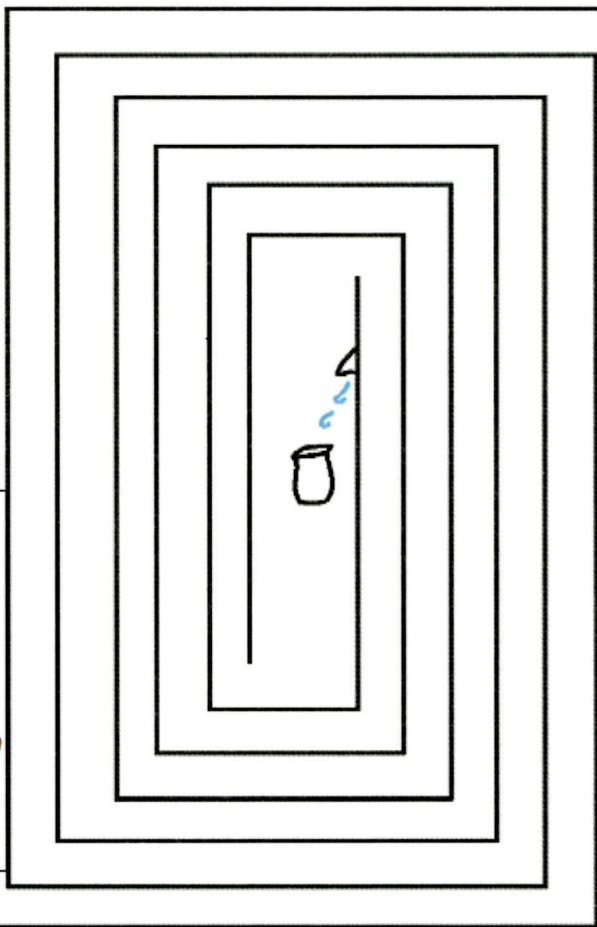


2 pts

**Help the Ancestral Puebloan collect water.  
Continue on to his cornfield to water his crops.**



**In**

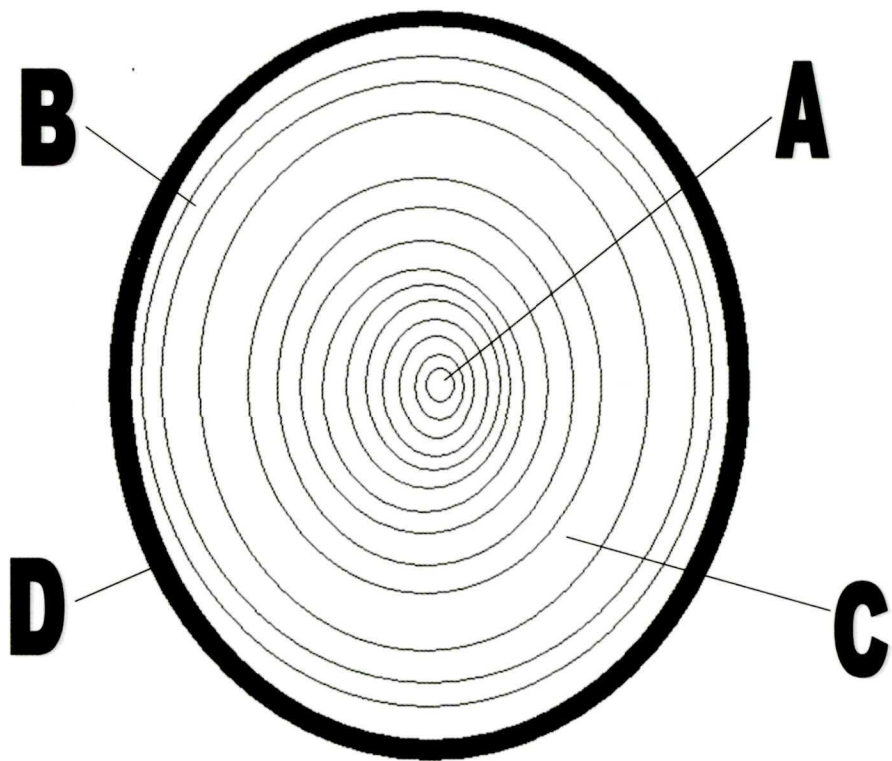


**Did you know?**

**Corn, squash, and beans were the main food the Ancestral Puebloans grew and ate.**

**1 pt**

# Tree Ring Diagram



Directions: Identify the layers of the tree that are associated with the letters and locations above with the descriptions below.

- \_\_\_\_\_ Layer that protects the tree
- \_\_\_\_\_ Symbolizes birth of the tree
- \_\_\_\_\_ Shows slow growing season for the tree
- \_\_\_\_\_ Good weather condition helped the tree grow faster

1 pt



# SEARCH, FIND, AND DRAW

Find the items in and outside the visitor center and draw what they look like.

**Park Service Logo**

**Hogan**

**Axe**

**Sweat Lodge**

**Knives**

**Pinon Tree**

**Saddle**

**Bracelet**

**Dinosaur Footprint**

**3 pts**





Did you know?

The Ancestral Puebloan traded pottery and other artifacts for macaw birds which are native to Mexico and Central America.

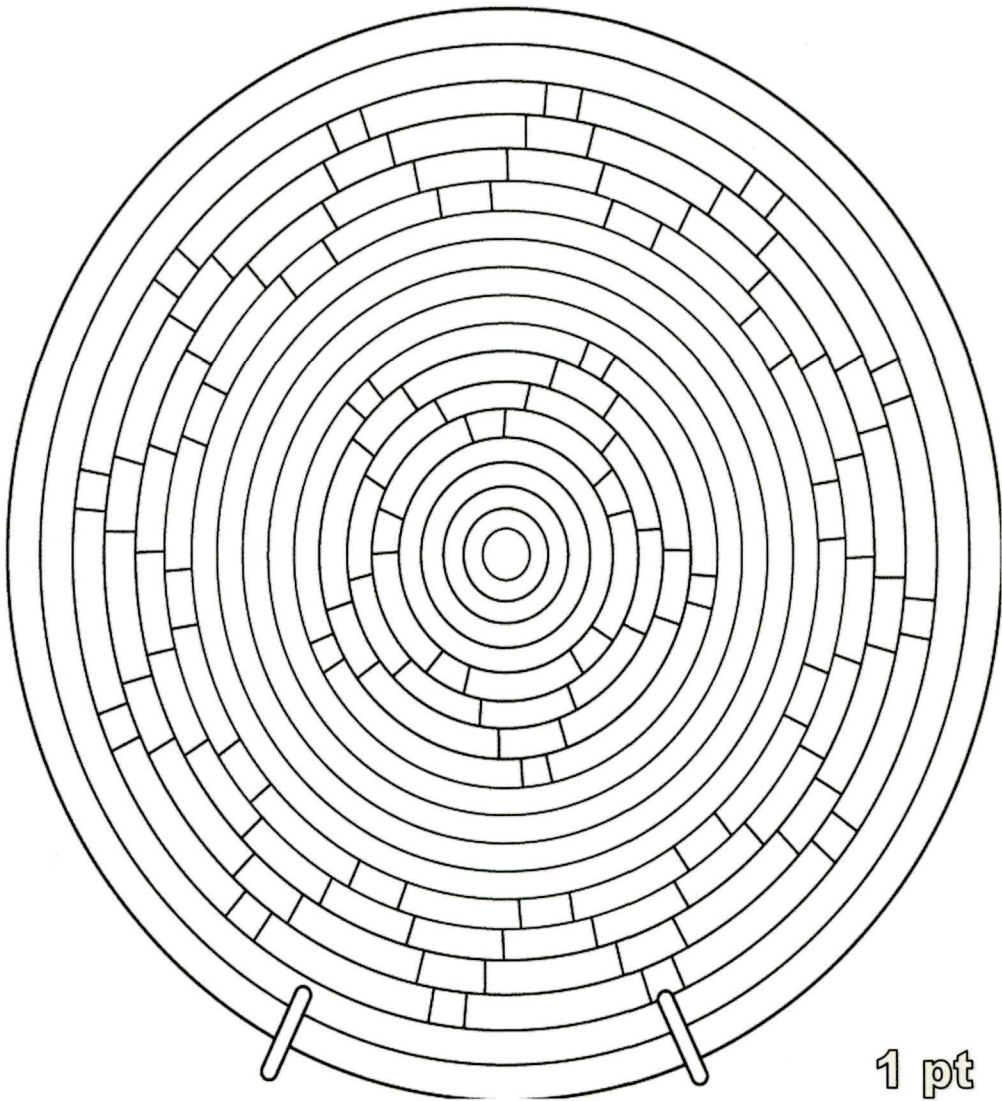
**Complete the maze and color the feathers of the macaw.**



1 pt

# Color the Navajo Basket

*This basket is used for multiple life events: a wedding, a birth of a child, a blessing of a home, and a healing ceremony.*



1 pt

# Picture Crossword

Down

1



3



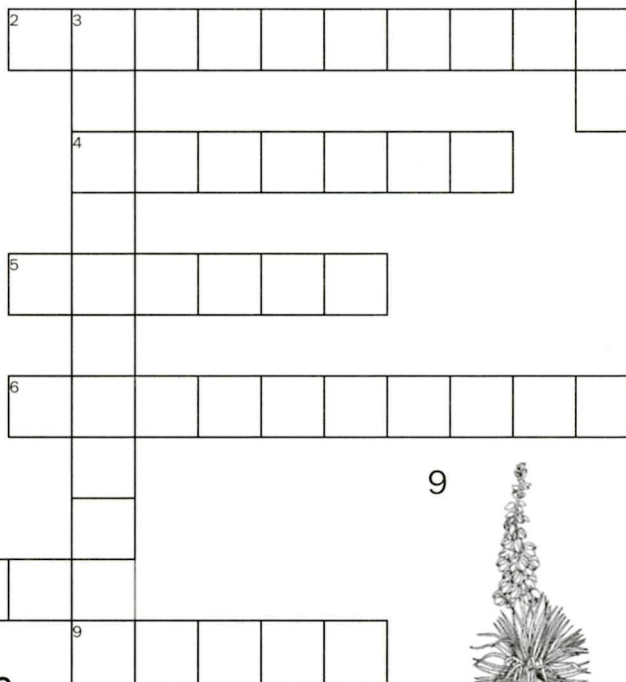
7



ACROSS: 2. park ranger 4. compass 5. sandal 6. Douglas fir 7. tree ring 8. yucca

DOWN: 1. pottery 3. archaeology 7. tent

Answer Key:



8

8

2



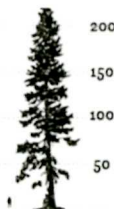
4



5



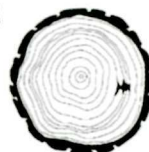
6



9

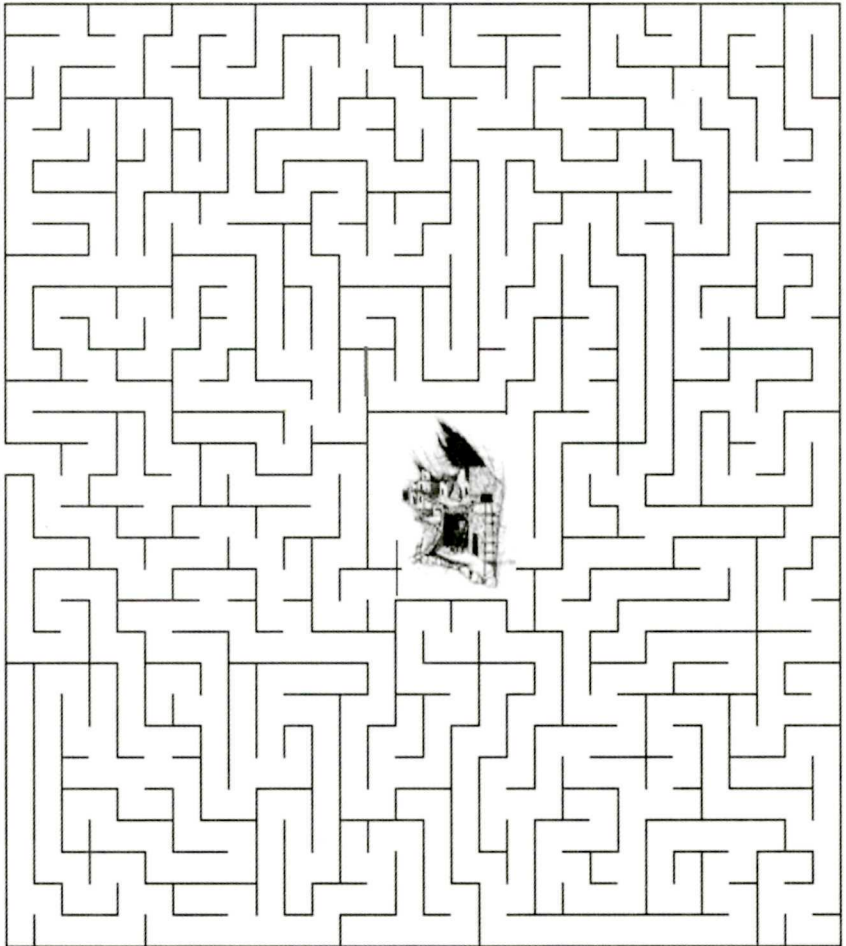


8



2 pts

**Turkey has wandered off from home,  
help him get back to the cliff dwelling.**



**Did you know?** Evidence of domesticated turkeys can be found at Betatakin and Keet Seel!

**2 pts**



# Navajo National Monument Word Search

G B A N O Z I R A D

N E G A L L I V H C

I T E T O Y O C B S

P A J U N I P E R O

M T R A I L O A N O

A A N C E S T R A L

C K I G E S T K V B

S I R A N G E R A E

Z N E P S A R A J U

C A N Y O N Y P O P

ANCESTRAL

BETATAKIN

COYOTE

PARK

RANGER

TSEGI

ARIZONA

CAMPING

JUNIPER

POTTERY

STARS

VILLAGE

ASPEN

CANYON

NAVAJO

PUEBLO

TRAIL

3 pts

# Secret Code

Decipher the answer to each question from the code below.

What white barked tree is at the bottom of Betatakin Canyon?



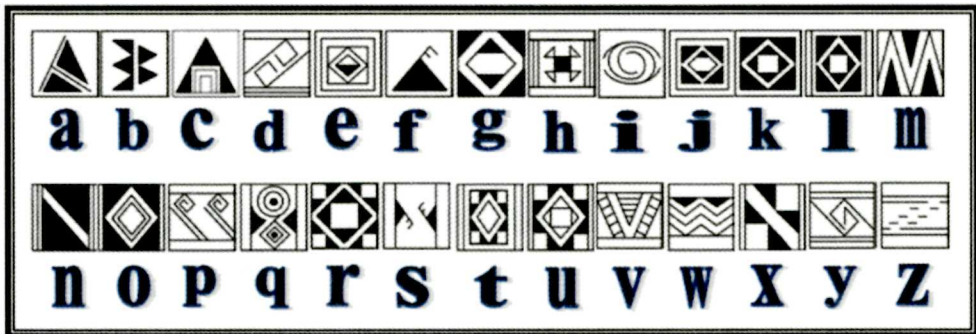
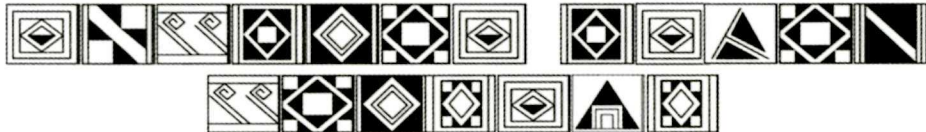
Bones and feathers were found within Betatakin and Keet Seel that belongs to which birds?



Which yucca plant is the best to make sandals?



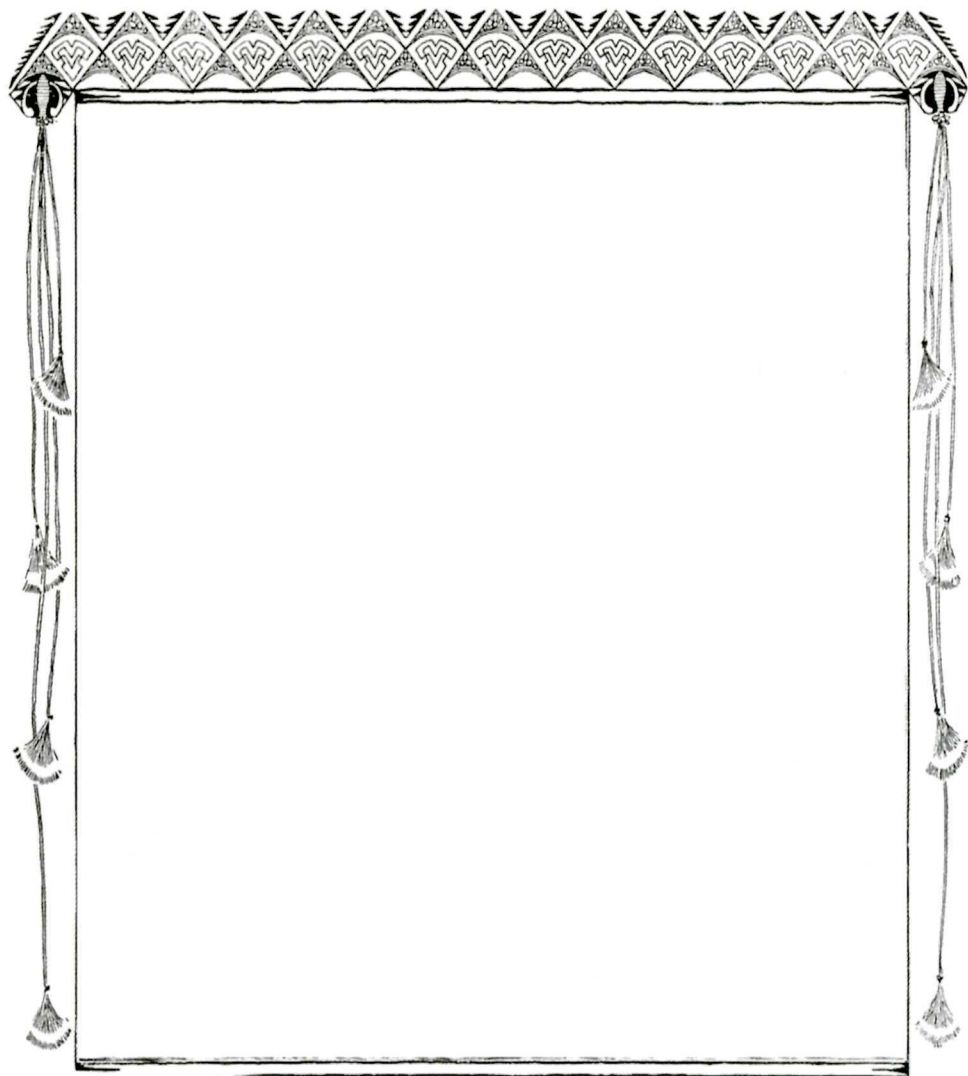
What is the Junior Ranger motto?



3 pts

# Design Your Own Cliff Dwelling

The Ancestral Puebloan people built the cliff dwellings of Betatakin/Talastima and Keet Seel/Kawestima. If you could build a cliff dwelling, what would you put into it?



1 pt

# Navajo National Monument Facts

Navajo National Monument was established in 1909 by President William Taft.

The park protects three cliff dwelling villages:

**Inscription House, Betatakin, and Keet Seel.**

The park receives an average of 150 visitors a day.

NNM is one of three National Park Service units located on the Navajo Nation. The other two are Canyon De Chelly National Monument and Hubbell Trading Post National Historic Site.

The park is free of charge including no fees for camping and backcountry hiking to Keet Seel.







# NOTES





# NOTES



**Would you like to know more?**

**[www.nps.gov/webranger.com](http://www.nps.gov/webranger.com)**

**Navajo National Monument**

**P.O. Box 7717**

**Shonto, AZ 86054**

**928-672-2700**

Jungle crafts for kids

Jane Elling Haas

Artsashina

<http://www.supercoloring.com/>

<http://www.gilaben.com>

[edHelper.com](http://www.edHelper.com)

"Adapted from SW potter designs reference

Cultural Resource Division

Navajo National Monument"

<http://swvirtualmuseum.nau.edu/>

[www.puzzlemaker.com](http://www.puzzlemaker.com)

**Adapted from :**

**Aaron Mark Begay: Designer and illustration**

**Finalized by :**

**Navajo National Monument Park Rangers**



*This Junior Ranger Book was made using recycled paper.*





## **JUNIOR RANGER PLEDGE**

**I promise to preserve and protect the plants, animals, and cultural history of Navajo National Monument. I will observe park rules, be safe, and help rangers care for all parks.**

**This is to certify that**

---

**is an official Junior Ranger at Navajo National Monument.**

---

**Park Ranger**

**Official Stamp**