

index of
the national park
system

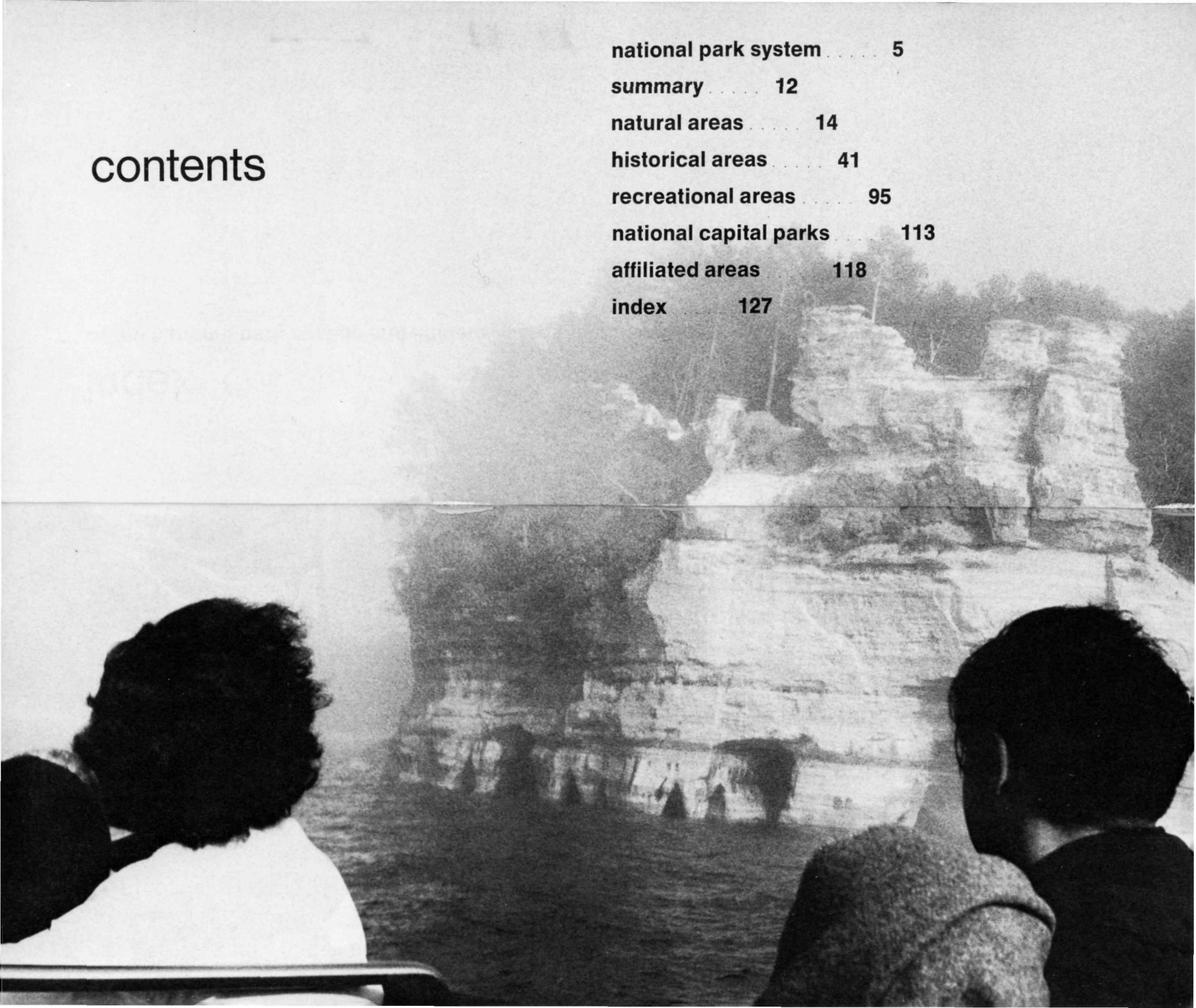


index

of the national park system and affiliated areas as of january 1, 1975

contents

national park system	5
summary	12
natural areas	14
historical areas	41
recreational areas	95
national capital parks	113
affiliated areas	118
index	127



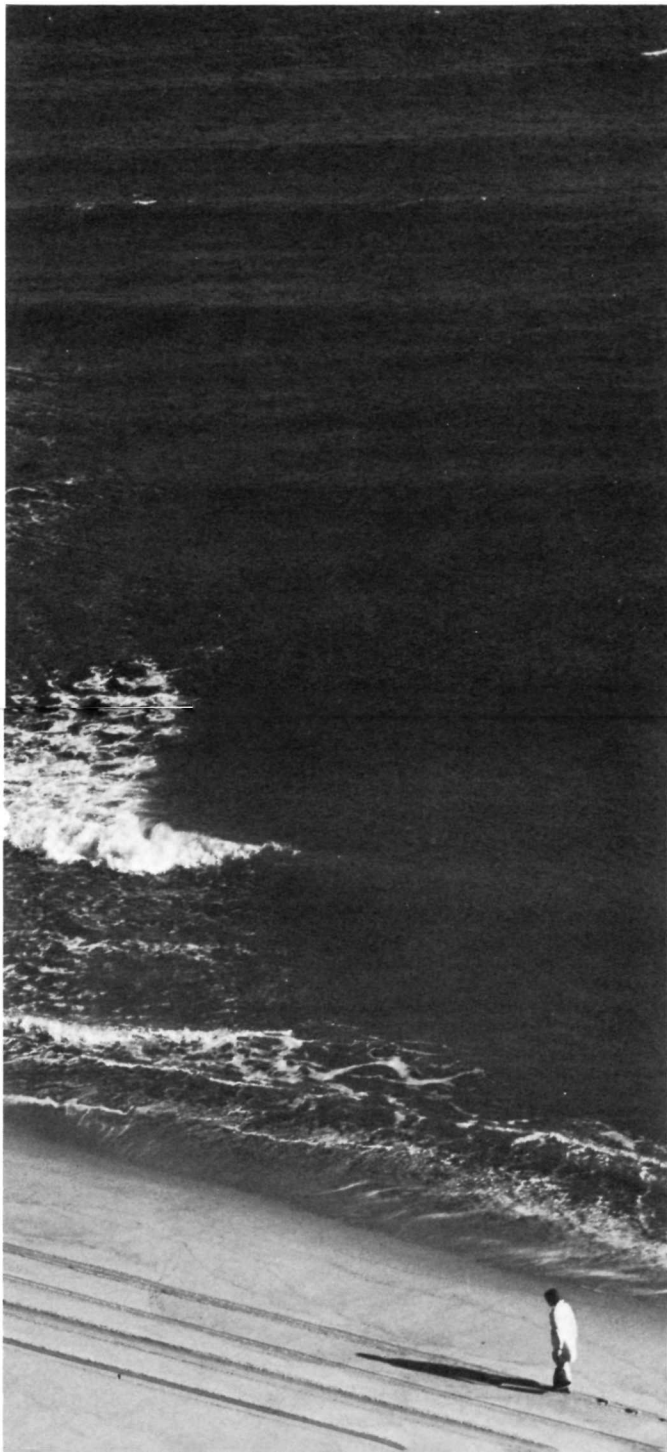


national park system

The National Park System of the United States, now in the early years of its second century, comprises nearly 300 areas covering some 31 million acres in 49 States, the District of Columbia, Puerto Rico, and the Virgin Islands. These areas are of such national significance as to justify special recognition and protection in accordance with various acts of Congress.

By act of March 1, 1872, Congress established Yellowstone National Park in the Territories of Montana and Wyoming "as a public park or pleasuring ground for the benefit and enjoyment of the people" and placed it "under exclusive control of the Secretary of the Interior." The founding of Yellowstone National Park began a world-wide national park movement. Today more than 100 nations contain some 1,200 national parks or equivalent preserves.

In the years following the establishment of Yellowstone, the United States authorized additional national parks and monuments, most of them carved from the Federal lands of the West. But no single agency provided unified



management of the varied Federal parklands. The national parks and some national monuments were administered by the Department of the Interior, while other monuments and natural and historical areas were administered as separate units by the War Department and the Forest Service of the Department of Agriculture.

In an act signed on August 25, 1916, Congress established in the Department of the Interior the National Park Service to provide cohesive administration of such areas under the Department's jurisdiction.

The Act says:

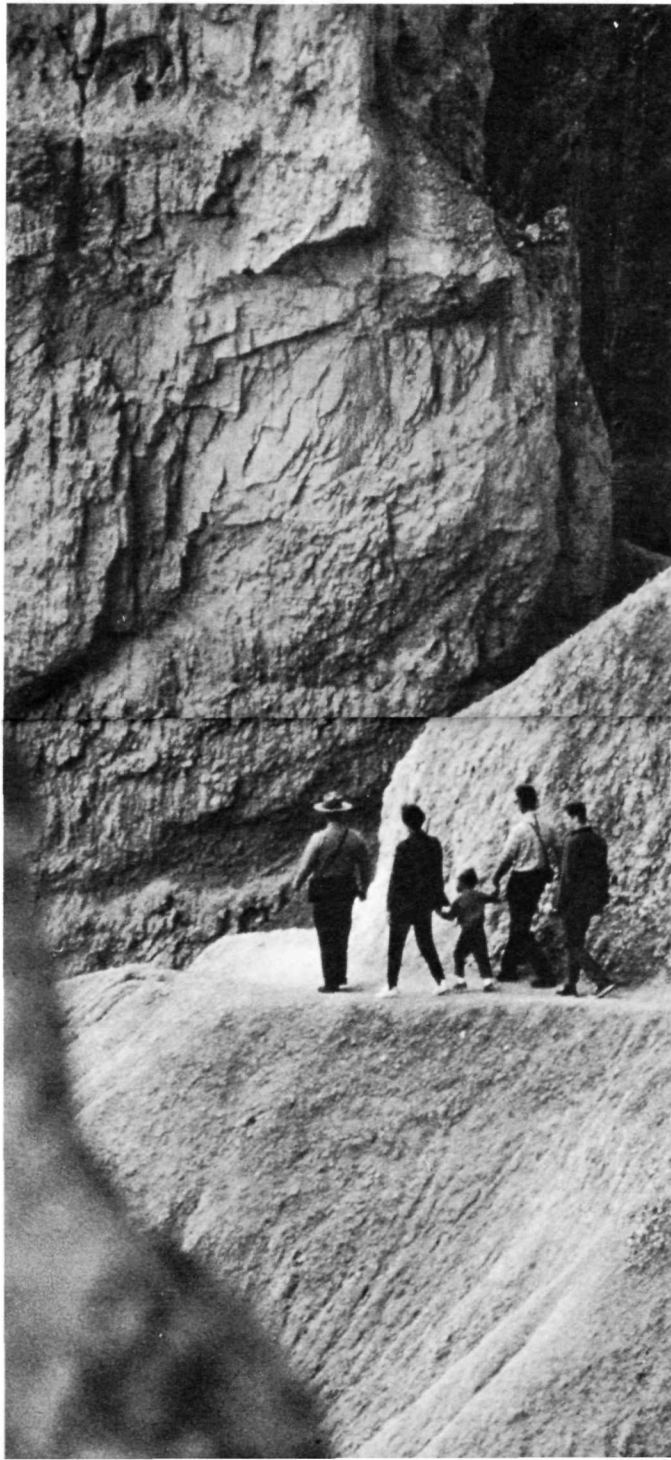
The service thus established shall promote and regulate the use of the Federal areas known as national parks, monuments and reservations . . . by such means and measures as conform to the fundamental purpose of the said parks, monuments and reservations, which purpose is to conserve the scenery and the natural and historic objects and the wild life therein and to provide for the enjoyment of the same in such manner and by such means as will leave them unimpaired for the enjoyment of future generations.

A Presidential executive order in 1933 transferred 63 national monuments and military sites from the Forest Service and the War Department to the National Park Service. This action was a major step in the development of today's truly national system of parks—a system that covers all regions of the nation and includes areas of historical as well as scenic and scientific importance.

In 1964 the areas of the National Park System were classified into *natural*, *historical*, and *recreational* categories for administrative convenience and to clarify park purposes for the public.

Congress declared in the General Authorities Act of 1970 that the National Park System "began with the establishment of Yellowstone National Park in 1872 . . . and that it is the purpose of this Act to include all such (natural, historical, and recreational) areas in the System."

Additions to the National Park System are now generally made through acts of Congress, and national parks can be created only through such acts. But the President has authority, under the Antiquities Act of 1906, to pro-



claim national monuments on lands already under Federal jurisdiction. The Secretary of the Interior is usually asked by Congress for his recommendations on proposed additions to the System. The Secretary is counseled by the Advisory Board on National Parks, Historic Sites, Buildings and Monuments, composed of private citizens, which advises him on possible additions to the System and policies for its management.

8

administration

The National Park Service administers the System through nine Regional Offices. The addresses of these offices and their areas of responsibility follow:

North Atlantic Regional Office
150 Causeway Street
Boston, Massachusetts 02114
(Maine, New Hampshire, Vermont,
Massachusetts, Rhode Island,
Connecticut, New York, New
Jersey)

Midwest Regional Office
1709 Jackson Street
Omaha, Nebraska 68102
(Ohio, Indiana, Michigan,
Wisconsin, Illinois, Minnesota,
Iowa, Missouri, Nebraska,
Kansas)

Mid-Atlantic Regional Office
143 South Third Street
Philadelphia, Pennsylvania
19106
(Pennsylvania, Maryland, West
Virginia, Delaware, Virginia,
excluding parks assigned to
National Capital Parks)

National Capital Parks
1100 Ohio Drive, SW
Washington, D.C. 20242
(District of Columbia, some
units in Maryland, Virginia,
West Virginia)

Southeast Regional Office
3401 Whipple Avenue
Atlanta, Georgia 30344
(Kentucky, Tennessee, North
Carolina, South Carolina,
Mississippi, Alabama, Georgia,
Florida, Puerto Rico, Virgin
Islands)

Rocky Mountain Regional Office
P.O. Box 25287
Denver, Colorado 80225
(Montana, North Dakota, South
Dakota, Wyoming, Utah, Colorado)

Southwest Regional Office
P.O. Box 728
Santa Fe, New Mexico 87501
(Arkansas, Louisiana, Texas,
Oklahoma, New Mexico, north-
east corner of Arizona)

Western Regional Office
Box 36063
450 Golden Gate Avenue
San Francisco, California 94102
(California, Nevada, most of
Arizona, Hawaii)

Pacific Northwest Regional
Office, Fourth & Pike Building,
Room 927, 1424 Fourth Avenue,
Seattle, Washington 98101
(Idaho, Oregon, Washington,
Alaska)

9

nomenclature

10

The diversity of the parks is reflected in the variety of titles given to them. These include such designations as national park, national preserve, national monument, national memorial, national historic site, national seashore, and national battlefield park.

Although some titles are self-explanatory, others have been used in many different ways. For example, the title "national monument" has been given to great natural reservations, historic military fortifications, prehistoric ruins, fossil sites, and to the Statue of Liberty.

In recent years, Congress and the National Park Service have attempted, with some success, to simplify the nomenclature and to establish basic criteria for use of the different official titles. Brief definitions of the most common titles are included in this booklet in the explanations preceding the park listings under Natural, Historical, and Recreational Areas.



summary

of areas administered by the national park service

CLASSIFICATION	NUMBER	LAND AND WATER WITHIN AUTHORIZED BOUNDARIES ¹		
		FEDERAL (ACRES)	NON-FEDERAL (ACRES)	GROSS
National Parks ³	38	14,073,484.91	327,032.06	15,618,891.97
National Monuments	81	9,583,504.90	267,771.44	9,851,276.34
National Battlefield Parks	3	6,520.34	141.64	6,661.98
National Battlefields	7	4,650.61	2,546.91	7,197.52
National Battlefield Sites	2	967.24	833.76	1,801.00
National Cemeteries ²		218.36		218.36
National Military Parks	11	31,537.15	3,086.73	34,623.88
National Historical Parks	16	49,493.31	12,458.75	61,952.06
National Historic Sites	52	11,228.23	2,328.11	13,556.34
National Memorials	22	5,801.98	133.23	5,935.21
National Memorial Parks	1	69,515.88	892.76	70,408.64
National Seashores	10	411,104.71	193,622.00	604,726.71

National Lakeshores	4	45,987.63	144,377.90	190,365.53
National Scenic Riverways	3	71,400.58	79,079.03	150,479.61
National Rivers	1	26,653.65	67,492.35	94,146.00
National Recreation Areas ³	16	3,202,200.54	264,312.52	3,495,625.25
National Parkways	4	139,792.63	28,634.91	168,427.54
National Scenic Trails	1	17,000.00	33,000.00	50,000.00
Parks (Other)	9	30,001.44	1,668.12	31,669.56
National Preserves ³	2			669,550.00
White House	1	18.07		18.07
National Mall	1	146.35		146.35
National Visitor Center	1		18.01	18.01
National Capital Parks	1	7,495.49		7,495.49
Total ³	287	27,788,724.00	1,429,430.23	31,135,191.42

¹ Acreage as of June 30, 1974, for most areas. New areas and those subject to boundary changes authorized between June 30, 1974, and Jan. 1, 1975, reflect data available at time of authorization. Legislation regarding Grand Canyon National Park was enacted Jan. 3, 1975.

² National cemeteries administered by the National Park System are administered in conjunction with associated historical units and are not listed separately in this publication.

³ Federal and Non-Federal acreage figures were not available for Big Cypress National Preserve, Big Thicket National Preserve, Cuyahoga National Recreation Area, and Grand Canyon National Park at time of publication. Therefore, there is no acreage breakdown for national preserves, and the totals of the two figures for national parks and national recreation areas do not equal the gross acreage figures, nor do total Federal and Non-Federal figures equal total gross figures.

natural areas

To be a part of the National Park System a natural area must be an expanse or feature of land or water of such scenic and scientific value and quality as to be worthy of preservation as a national park, national monument, or national preserve.

14

Natural areas contain one or more distinctive attributes such as forest, grassland, tundra, desert, estuary, or river systems. They may contain “windows” on the past for a view of geological history, imposing landforms such as mountains, mesas, thermal areas, and caverns, and they may be habitats of abundant or rare wildlife and plantlife.

Generally, a **national park** covers a large area. It contains a variety of resources and encompasses sufficient land or water to ensure adequate protection of the resources. Chosen primarily for scenic and scientific values, all the national parks but one are natural areas. The exception is Mesa Verde National Park, Colo., a historical area.

A **national monument** is intended to preserve at least one nationally significant resource. It is usually smaller

than a national park and lacks its diversity of attractions.

15

In 1974, Big Cypress and Big Thicket were authorized as the first **national preserves**. This is a new category of natural areas established primarily for the protection of certain resources. Activities such as hunting and fishing or the extraction of minerals and fuels may be permitted if they do not jeopardize the natural values.

	number	acreage
national parks	37	15,566,855.73
national monuments	35	9,606,690.59
national preserves	2	669,550.00
Total	74	25,843,096.32

Natural Areas

NAME AND LOCATION	ACREAGE			OUTSTANDING CHARACTERISTICS AND PERTINENT DATA	ADDRESS
	FEDERAL	NON- FEDERAL	GROSS		
Acadia National Park, Maine	36,363.85	617.14	36,980.99	The sea sets the mood here, uniting the rugged coastal area of Mount Desert Island (highest elevation on the eastern seaboard), picturesque Schoodic Peninsula on the mainland, and the spectacular cliffs of Isle au Haut. Proclaimed as Sieur de Monts National Monument, July 8, 1916; established as Lafayette National Park, Feb. 26, 1919; changed to Acadia National Park, Jan. 19, 1929. Boundary changes: Jan. 19, 1929; May 23, 1930; May 29, 1935; Aug. 24, 1935; June 6, 1942; Dec. 22, 1944; July 30, 1947; Sept. 7, 1949.	RFD #1, Bar Harbor, ME 04609.
Agate Fossil Beds National Monument, Nebr.	2,736.73	317.70	3,054.43	These renowned quarries containing numerous, concentrated, well-preserved Miocene mammal fossils represent an important chapter in the evolution of mammals. Authorized, June 5, 1965.	P.O. Box 427, Gering, NB 69341.
Arches National Park Utah.	65,097.59	8,291.39	73,388.98	Extraordinary products of erosion in the form of giant arches, windows, pinnacles, and pedestals change color here constantly as the sun moves overhead. Proclaimed as a national monument Apr. 12, 1929; established as a national park, Nov. 12, 1971. Boundary changes: Nov. 25, 1938; July 22, 1960; Jan. 20, 1969.	Moab, UT 84532.
Badlands National Monument, S. Dak.	151,369.56	91,932.77	243,302.33	Carved by erosion, this scenic landscape contains animal fossils of 40 million years ago. Prairie grasslands support bison, bighorn sheep, deer, and antelope. Authorized, Mar. 4, 1929. Boundary changes: June 26, 1936; Oct. 3, 1952; Mar. 22, 1957; Aug. 8, 1968.	P.O. Box 72, Interior, SD 57750.
Big Bend National Park, Tex.	707,478.40	1,609.70	709,088.10	Mountain scenery contrasts with desert in this great bend of the Rio Grande, where a variety of unusual geological structures are found. Authorized, June 20, 1935; established, June 12, 1944. Boundary changes: Aug. 30, 1949; Nov. 5, 1957.	Big Bend National Park, TX 79834.
Big Cypress National Preserve, Fla.	(Not available)	(Not available)	585,000.00	Adjoining the northwest section of Everglades National Park, this large area provides a freshwater supply crucial to the park's survival. Subtropical plant and animal life abounds in this ancestral home of the Seminole and Miccosukee Indians. Authorized, Oct. 11, 1974.	C/o Everglades National Park, P.O. Box 279, Homestead, FL 33030.
Big Thicket National Preserve, Tex.	(Not available)	(Not available)	84,550.00	This unique ecosystem, with inviting research possibilities, contains alligator, Texas red wolf, black bear, ocelot, and 300 bird species, possibly including the near-extinct ivorybill woodpecker. Authorized, Oct. 11, 1974.	C/o Southwest Regional Office, P.O. Box 728, Santa Fe, NM 87501.
Biscayne National Monument, Fla.	94,367.53	9,333.65	103,701.18	Most of the park is reef and water, but within its boundaries about 25 keys, or islands, form a north-south chain, with Biscayne Bay on the west and the Atlantic Ocean on the east. Authorized, Oct. 18, 1968. Boundary change: Oct. 26, 1974.	P.O. Box 1369, Homestead, FL 33030.

Natural Areas

18

NAME AND LOCATION	ACREAGE			OUTSTANDING CHARACTERISTICS AND PERTINENT DATA	ADDRESS
	FEDERAL	NON- FEDERAL	GROSS		
Black Canyon of the Gunnison National Monument, Colo.	13,323.14	348.99	13,672.13	Shadowed depths of this sheer-walled canyon accentuate the darkness of ancient rocks of obscure origin. Proclaimed, Mar. 2, 1933. Boundary changes: May 16, 1938; Oct. 28, 1939; Apr. 13, 1960.	P.O. Box 1648, Montrose, CO 81401.
Bryce Canyon National Park, Utah.	36,007.88	2.50	36,010.38	In horseshoe-shaped amphitheaters along the edge of the Paunsaugunt Plateau in southern Utah stand innumerable highly colored and grotesque pinnacles, walls, and spires, perhaps the most colorful and unusual erosional forms in the world. Proclaimed as Bryce Canyon National Monument, June 8, 1923; authorized as Utah National Park, June 7, 1924; changed to Bryce Canyon National Park, Feb. 25, 1928. Boundary changes: May 25, 1928; June 13, 1930; Jan. 5, 1931; Feb. 17, 1931; May 4, 1931; Mar. 7, 1942.	Bryce Canyon, UT 84717.

19

Buck Island Reef National Monument, V.I.	850.00	850.00	Coral, grottoes, sea fans, gorgonias, and tropical fishes—along an underwater trail—make this one of the finest marine gardens in the Caribbean. The island is a rookery for frigate birds and pelicans and the habitat of green turtles. Proclaimed, Dec. 28, 1961.	Box 160, Christiansted, St. Croix, VI 00820.
Canyonlands National Park, Utah.	330,556.27	7,002.76	337,559.03	In this geological wonderland, rocks, spires, and mesas rise more than 7,800 feet. Here, too, are petroglyphs left by Indians about 1,000 years ago. Established, Sept. 12, 1964. Boundary change: Nov. 12, 1971.	446 S. Main St., Moab, UT 84532.
Capitol Reef National Park, Utah.	221,101.86	20,763.62	241,865.48	Narrow high-walled gorges cut through a 60-mile uplift of sandstone cliffs with highly colored sedimentary formations. Dome-shaped white-cap rock along the Fremont River accounts for the name. Proclaimed as a national monument, Aug. 2, 1937; established as a national park, Dec. 18, 1971. Boundary changes: July 2, 1958; Jan. 20, 1969; Dec. 18, 1971.	Torrey, UT 84775.
Capulin Mountain National Monument, N. Mex.	680.42	95.00	775.42	This symmetrical cinder cone is an interesting example of a geologically recent, extinct volcano. Proclaimed, Aug. 9, 1916. Boundary change: Sept. 3, 1962.	Capulin, NM 88414.
Carlsbad Caverns National Park, N. Mex.	46,435.33	320.00	46,755.33	This series of connected caverns, the largest underground chambers yet discovered, has countless magnificent and curious formations. Proclaimed as Carlsbad Cave National Monument, Oct. 25, 1923; established as Carlsbad Caverns National Park, May 14, 1930. Boundary changes: Feb. 21, 1933; Feb. 3, 1939; Dec. 30, 1963.	3225 National Parks Highway, Carlsbad, NM 88220.

Natural Areas

NAME AND LOCATION	ACREAGE			OUTSTANDING CHARACTERISTICS AND PERTINENT DATA	ADDRESS
	FEDERAL	NON- FEDERAL	GROSS		
Cedar Breaks National Monument, Utah.	6,154.60	6,154.60	A huge natural amphitheater has eroded into the variegated Pink Cliffs (Wasatch Formation), which are 2,000 feet thick at this point. Proclaimed, Aug. 22, 1933. Boundary changes: Mar. 7, 1942; June 30, 1961.	P.O. Box 749, Cedar City, UT 84720.
Channel Islands National Monument, Calif.	18,384.97	18,384.97	The monument, with a large rookery of sea lions, nesting sea birds, and unique plants and animals, includes Santa Barbara and Anacapa Islands. Land area, 1,120.03 acres. Proclaimed, Apr. 26, 1938. Boundary change: June 10, 1938.	1699 Anchors Way Dr., Ventura, CA 93003.
Chiricahua National Monument, Ariz.	10,634.84	13.41	10,648.25	The varied rock formations here were created millions of years ago by volcanic activity, aided by erosion. Proclaimed, Apr. 18, 1924; transferred from Forest Service, U.S. Department of Agriculture, Aug. 10, 1933. Boundary change: June 10, 1938.	Dos Cabezas Star Route, Willcox, AZ 85643.
Colorado National Monument, Colo.	17,655.42	13.10	17,668.52	Sheer-walled canyons, towering monoliths, and weird formations reflect the action of time and weather on colorful sandstone. Proclaimed, May 24, 1911. Boundary changes: Mar. 3, 1933; Aug. 7, 1959.	P.O. Box 438, Fruita, CO 81521.
Crater Lake National Park, Oreg.	160,290.33	160,290.33	This unique, deep blue lake lies in the heart of Mount Mazama, an ancient volcanic peak that collapsed centuries ago. The lake is encircled by multicolored lava walls reaching 500 to 2,000 feet above the lake waters. Established, May 22, 1902. Boundary changes: June 7, 1924; May 14, 1932.	P.O. Box 7, Crater Lake, OR 97604.
Craters of the Moon National Monument, Idaho.	53,545.05	53,545.05	Volcanic cones, craters, lava flows, and caves make this an astonishing landscape. Proclaimed, May 2, 1924. Boundary changes: July 23, 1928; July 9, 1930; June 5, 1936; July 18, 1941; Nov. 19, 1962. Wilderness (43,243 acres) established Oct. 23, 1970.	P.O. Box 29, Arco, ID 83213.
Death Valley National Monument, Calif.-Nev.	2,048,850.82	19,116.11	2,067,966.93	This large desert, nearly surrounded by high mountains, contains the lowest point in the Western Hemisphere. The area includes Scotty's Castle, the grandiose home of a famous prospector, and other remnants of gold and borax mining activity. Federal acreage: 1,938,041.09 in Calif., 110,809.73 in Nev. Proclaimed, Feb. 11, 1933. Boundary changes: Mar. 26, 1937; Jan. 17, 1952.	Death Valley, CA 92328.
Devils Postpile National Monument, Calif.	798.46	798.46	Hot lava cooled and cracked some 900,000 years ago to form basalt columns 40 to 60 feet high resembling a giant pipe organ. The John Muir Trail between Yosemite and Kings Canyon National Parks crosses the monument. Proclaimed, July 6, 1911; transferred from Forest Service, U.S. Department of Agriculture, Aug. 10, 1933.	C/o Sequoia and Kings Canyon National Parks, Three Rivers, CA 93271.

Natural Areas

22

NAME AND LOCATION	ACREAGE			OUTSTANDING CHARACTERISTICS AND PERTINENT DATA	ADDRESS
	FEDERAL	NON- FEDERAL	GROSS		
Devils Tower National Monument, Wyo.	1,346.91	1,346.91	This 865-foot tower of columnar rock, the remains of a volcanic intrusion, is the Nation's first national monument. Proclaimed, Sept. 24, 1906. Boundary change: Aug. 9, 1955.	Devils Tower, WY 87214.
Dinosaur National Monument, Colo.-Utah.	199,550.75	11,499.95	211,050.70	Spectacular canyons were cut by the Green and Yampa Rivers through upfolded mountains. A quarry contains fossil remains of dinosaurs and other ancient animals. Federal acreage: 147,436.44 in Colo.; 52,114.31 in Utah. Proclaimed, Oct. 4, 1914. Boundary changes: July 14, 1938; Sept. 8, 1960; Feb. 21, 1963; Oct. 9, 1964.	P.O. Box 210, Dinosaur, CO 81610.
Everglades National Park, Fla.	1,385,723.49	14,809.51	1,400,533.00	This largest remaining subtropical wilderness in the coterminous United States has extensive fresh- and saltwater areas, open Everglades prairies, and mangrove forests. Abundant wildlife includes rare and colorful birds. Third largest national park. Authorized, May 30, 1934. Boundary changes: Feb. 22, 1950; Mar. 12, 1954; July 2, 1958; Sept. 14, 1959; Sept. 2, 1960.	P.O. Box 279, Homestead, FL 33030.

Florissant Fossil Beds National Monument, Colo.	5,919.32	73.00	5,992.32	A wealth of fossil insects, seeds, and leaves of the Oligocene Period are preserved here in perfect detail. Here, too, is a remarkable display of standing petrified sequoia stumps. <i>Limited Federal facilities.</i> Authorized, Aug. 20, 1969.	P.O. Box 185, Florissant, CO 80816.
Fossil Butte National Monument, Wyo.	7,078.00	1,100.00	8,178.00	An abundance of rare fish fossils, 40-65 million years old, is evidence of former inhabitants of this now semiarid region. Established, Oct. 23, 1972.	P.O. Box 527, Kemmerer, WY 83101.
Glacier Bay National Monument, Alaska.	2,805,071.54	197.95	2,805,269.49	Great tidewater glaciers, examples of early stages of post glacial forests, and rare species of wildlife mark this, the largest area in the National Park System. Proclaimed, Feb. 26, 1925. Boundary changes: Apr. 18, 1939; Mar. 31, 1955.	P.O. Box 1089, Juneau, AK 99802.
Glacier National Park, Mont.	1,012,084.98	1,513.42	1,013,598.40	Superb Rocky Mountain scenery, with numerous glaciers and lakes among high peaks, forms part of the Waterton-Glacier International Peace Park—established May 2, 1932. Established, May 11, 1910. Boundary changes: July 31, 1939; Dec. 13, 1944; April 11, 1972.	West Glacier, MT 59936.

23

Natural Areas

NAME AND LOCATION	ACREAGE			OUTSTANDING CHARACTERISTICS AND PERTINENT DATA	ADDRESS
	FEDERAL	NON- FEDERAL	GROSS		
Grand Canyon National Park, Ariz.	(Not available)	(Not available)	1,218,375.00	<p>The park, focusing on the world-famous Grand Canyon of the Colorado River, encompasses the entire course of the river and adjacent uplands from the southern terminus of Glen Canyon National Recreation Area to the eastern boundary of Lake Mead National Recreation Area. The forces of erosion have exposed an immense variety of formations which illustrate vast periods of geological history.</p> <p>Grand Canyon National Monument proclaimed, Jan. 11, 1908; National Park established, Feb. 26, 1919; transferred from Forest Service, U.S. Department of Agriculture Aug. 15, 1919. Boundary changes: Feb. 25, 1927; Mar. 7, 1928. A separate Grand Canyon National Monument proclaimed, Dec. 22, 1932. Boundary change: Apr. 4, 1940. Marble Canyon National Monument proclaimed Jan. 20, 1969. All three units and a portion of Lake Mead National Recreation Area combined with additional lands as National Park, Jan. 3, 1975.</p>	P.O. Box 129, Grand Canyon, AZ 86023.
Grand Teton National Park, Wyo.	304,507.67	5,910.55	310,418.22	<p>The most impressive part of the Teton Range, this series of peaks was once a noted landmark of Indians and "Mountain Men." The park includes part of Jackson Hole, winter feeding ground of the largest American elk herd.</p> <p>Established, Feb. 26, 1929. Boundary change: Sept. 14, 1950, through incorporation of part of former Jackson Hole National Monument, proclaimed, Mar. 15, 1943. Remainder of the monument was absorbed by National Elk Refuge, Wyo., now administered by Fish and Wildlife Service, U.S. Department of the Interior.</p>	P.O. Box 67, Moose, WY 83012.
Great Sand Dunes National Monument, Colo.	35,614.69	1,051.82	36,666.51	<p>Among the largest and highest in the United States, these dunes were deposited over thousands of years by southwesterly winds blowing through the passes of the lofty Sangre de Cristo Mountains.</p> <p>Proclaimed, Mar. 17, 1932. Boundary changes: Mar. 12, 1946; June 7, 1956.</p>	P.O. Box 60, Alamosa, CO 81101.
Great Smoky Mountains National Park, N.C.-Tenn.	514,757.53	2,256.69	517,014.22	<p>Loftiest range east of the Black Hills, and one of the oldest uplands on earth, the Smokies have a diversified and luxuriant plantlife, often of extraordinary size.</p> <p>Federal acreage: 274,793.97 in N.C.; 239,963.56 in Tenn.</p> <p>Authorized, May 22, 1926; established for administration and protection only, Feb. 6, 1930; established for full development, June 15, 1934. Boundary changes: Apr. 19, 1930; July 19, 1932; Aug. 19, 1937; Feb. 22, 1944; July 26, 1950; Mar. 11, 1957.</p>	Gatlinburg, TN 37738.

Natural Areas

NAME AND LOCATION	ACREAGE			OUTSTANDING CHARACTERISTICS AND PERTINENT DATA	ADDRESS
	FEDERAL	NON- FEDERAL	GROSS		
Guadalupe Mountains National Park, Tex.	79,972.42	79,972.42	Rising from the desert this mountain mass contains portions of the world's most extensive and significant Permian limestone fossil reef. Also featured are a tremendous earth fault, lofty peaks, unusual flora and fauna, and a colorful record of the past. Authorized, Oct. 15, 1966; established, Sept. 30, 1972.	3225 National Parks Highway, Carlsbad, NM 88220
Haleakala National Park, Hawaii.	20,929.89	6,893.79	27,823.68	Within the large and colorful crater of 10,023-foot Haleakala volcano, now dormant, lives a rare species of silversword. Other features are Kipahulu Valley, Seven Pools, and native and migratory birdlife. Established as a part of Hawaii National Park, Aug. 1, 1916; authorized as Haleakala National Park, Sept. 13, 1960. Boundary change: Jan. 10, 1969.	P.O. Box 537, Makawao, Maui, HI 96768.
Hawaii Volcanoes National Park, Hawaii.	217,029.61	12,147.42	229,177.03	Active volcanism continues here, on the island of Hawaii, where at lower elevations luxuriant and often rare vegetation provides food and shelter for a variety of animals. Established as Hawaii National Park, Aug. 1, 1916; changed to Hawaii Volcanoes National Park, Sept. 22, 1961. Boundary changes: May 1, 1922; Feb. 12, 1927; Apr. 11, 1928; June 20, 1938; July 16, 1940; July 1, 1961.	Hawaii Volcanoes National Park, HI 96718.
Hot Springs National Park, Ark.	3,345.75	2,419.11	5,764.86	More than a million gallons of water a day flow from 47 hot springs here, unaffected by climate or seasonal temperatures. Persons suffering from illness or injury often seek relief in the ancient tradition of thermal bathing. Set aside as Hot Springs Reservation by Federal Government, Apr. 20, 1832; established as a national park, Mar. 4, 1921. Boundary changes: June 5, 1924; Feb. 14, 1931; June 15, 1936; June 24, 1938; Aug. 10, 1939; Aug. 24, 1954; Aug. 18, 1958; Nov. 12, 1959.	P.O. Box 1219, Hot Springs National Park, AR 71901.
Isle Royale National Park, Mich.	539,279.94	539,279.94	The largest in Lake Superior, this forested island is also distinguished for its wilderness character, timber wolves and moose herd, and pre-Columbian copper mines. Land area: 133,779.94 acres. Authorized, Mar. 3, 1931. Boundary changes: May 28, 1934; June 20, 1938; Mar. 6, 1942; Aug. 14, 1958; Apr. 11, 1972.	P.O. Box 27, Houghton, MI 49931.
Jewel Cave National Monument, S. Dak.	1,274.56	1,274.56	Caverns, in limestone formation, consist of a series of chambers connected by narrow passages, with many side galleries and fine calcite crystal encrustations. Proclaimed, Feb. 7, 1908; transferred from Forest Service, U.S. Department of Agriculture, Aug. 10, 1933. Boundary change: Oct. 9, 1965.	Custer, SD 57730.
John Day Fossil Beds National Monument, Oreg.	2,035.00	12,370.00	14,405.00	Plant and animal fossils show five epochs, from Eocene to end of Pleistocene. Authorized, Oct. 26, 1974.	Pacific Northwest Regional Ofc., 1424 Fourth Ave., Seattle, WA 98101.

Natural Areas

28

NAME AND LOCATION	ACREAGE			OUTSTANDING CHARACTERISTICS AND PERTINENT DATA	ADDRESS
	FEDERAL	NON- FEDERAL	GROSS		
Joshua Tree National Monument, Calif.	531,781.70	28,166.16	559,947.86	A representative stand of Joshua-trees and a great variety of desert plants and animals, including the desert bighorn, exist in this desert region. Proclaimed, Aug. 10, 1936. Boundary changes: Sept. 25, 1950; June 30, 1961.	74485 Palm Vista Dr., Twenty-nine Palms, CA 92277.
Katmai National Monument, Alaska.	2,792,137.00	2,792,137.00	Variety marks this vast land: lakes, forests, mountains, marshlands all abound in wildlife—including the Alaskan brown bear, the world's largest carnivore. Here, in this the second largest area in the National Park System, Novarupta Volcano erupted violently in 1912, forming the ash-filled "Valley of Ten Thousand Smokes" where steam rose from countless fumaroles in the ash. Today, only a few active vents remain. Proclaimed, Sept. 24, 1918. Boundary changes: Apr. 24, 1931; Aug. 4, 1942; Jan. 20, 1969.	P.O. Box 7, King Salmon, AK 99613.

29

Kings Canyon National Park, Calif.	459,956.09	166.86	460,122.95	Two enormous canyons of the Kings River and the summit peaks of the High Sierra dominate this mountain wilderness. General Grant Grove, with its giant sequoias, is a detached section of the park. General Grant National Park established Oct. 1, 1890; abolished and its lands made part of Kings Canyon National Park when it was established on Mar. 4, 1940. Other boundary changes: June 21, 1940; June 5, 1942; Aug. 14, 1958; Aug. 6, 1965.	Three Rivers, CA 93271.
Lassen Volcanic National Park, Calif.	105,797.63	574.59	106,372.22	Lassen Peak, the only recently active volcano in the coterminous United States, erupted intermittently from 1914-1921. Proclaimed as Lassen Peak and Cinder Cone National Monuments, May 6, 1907; made part of Lassen Volcanic National Park when established on Aug. 9, 1916. Boundary changes: Apr. 26, 1928; May 21, 1928; Jan. 19, 1929; Apr. 19, 1930; July 3, 1930; Aug. 10, 1961; Apr. 11, 1972. Wilderness (78,982 acres) established Oct. 19, 1972.	Mineral, CA 96063.
Lava Beds National Monument, Calif.	46,238.69	261.46	46,500.15	Volcanic activity spewed forth molten rock and lava here creating an incredibly rugged landscape—a natural fortress used by the Indians in the Modoc Indian War, 1872-73. Proclaimed, Nov. 21, 1925; transferred from Forest Service, U.S. Department of Agriculture, Aug. 10, 1933. Boundary changes: Apr. 27, 1951; Oct. 26, 1974. Wilderness (28,460 acres) established Oct. 13, 1972.	P.O. Box 867, Tulelake, CA 96134.
Lehman Caves National Monument, Nev.	640.00	640.00	Tunnels and galleries decorated with stalactites and stalagmites honeycomb these caverns of light-gray and white limestone. Proclaimed, Jan. 24, 1922; transferred from Forest Service, U.S. Department of Agriculture, Aug. 10, 1933.	Baker, NV 89311.

Natural Areas

NAME AND LOCATION	ACREAGE			OUTSTANDING CHARACTERISTICS AND PERTINENT DATA	ADDRESS
	FEDERAL	NON- FEDERAL	GROSS		
Mammoth Cave National Park, Ky.	51,303.62	7.00	51,310.62	This series of underground passages—with beautiful limestone, gypsum, and cave onyx formations, deep pits and high domes, and an underground river—have been explored and mapped for 146 miles, making this the longest recorded cave system in the world. Authorized, May 25, 1926; provision for minimum park area, May 14, 1934; minimum area accepted for administration, May 22, 1936; fully established July 1, 1941. Boundary changes: Aug. 28, 1937; June 5, 1942; June 30, 1948.	Mammoth Cave, KY 42259.
Mount McKinley National Park, Alaska.	1,939,492.80	1,939,492.80	Mount McKinley, at 20,320 feet, is the highest mountain in North America. Large glaciers of the Alaska Range, caribou, Dall sheep, moose, grizzly bears, timber wolves, and other wildlife are highlights of this the second largest national park. Established, Feb. 26, 1917. Boundary changes: Jan. 30, 1922; Mar. 19, 1932.	P.O. Box 9, McKinley Park, AK 99755.
Mount Rainier National Park, Wash.	235,193.09	210.91	235,404.00	This greatest single-peak glacial system in the United States radiates from the summit and slopes of an ancient volcano, with dense forests and subalpine flowered meadows below. Established, Mar. 2, 1899. Boundary changes: May 28, 1926; Jan. 31, 1931; June 27, 1960.	Longmire, WA 98397.
Muir Woods National Monu- ment, Calif.	492.09	61.46	553.55	This virgin stand of coastal redwoods was named for John Muir, writer and conservationist. Proclaimed, Jan. 9, 1908. Boundary changes: Sept. 22, 1921; Apr. 5, 1935; June 26, 1951; Sept. 8, 1959; Apr. 11, 1972.	Mill Valley, CA 94941.
Natural Bridges National Monument, Utah.	7,454.03	325.11	7,779.14	Three natural bridges, carved out of sandstone, are protected here. The highest is 220 feet above the streambed, with a span of 268 feet. Proclaimed, Apr. 16, 1908. Boundary changes: Apr. 16, 1908; Sept. 25, 1909; Feb. 11, 1916; Aug. 14, 1962.	C/o Canyonlands National Park, Moab, UT 84532.
North Cascades National Park, Wash.	503,240.00	1,545.33	504,785.33	High jagged peaks intercept moisture-laden winds, producing glaciers, icefalls, waterfalls, and other water phenomena in this wild alpine region where lush forests and meadows, plant and animal communities thrive in the valleys. Established, Oct. 2, 1968.	Sedro Woolley, WA 98284.

Natural Areas

NAME AND LOCATION	ACREAGE			OUTSTANDING CHARACTERISTICS AND PERTINENT DATA	ADDRESS
	FEDERAL	NON-FEDERAL	GROSS		
Olympic National Park, Wash.	893,779.72	4,105.09	897,884.81	This mountain wilderness contains the finest remnant of Pacific Northwest rain forest, active glaciers, rare Roosevelt elk, and 50 miles of wild, scenic ocean shore. Proclaimed as Mount Olympus National Monument, Mar. 2, 1909; transferred from Forest Service, U.S. Department of Agriculture, Aug. 10, 1933; established as Olympic National Park, June 29, 1938. Boundary changes: Jan. 2, 1940; May 29, 1943; Jan. 6, 1953.	600 East Park Ave., Port Angeles, WA 98362.
Oregon Caves National Monument, Oreg.	465.80	465.80	Surface water running through marble bedrock formed these cave passages and intricate flowerstone formations. Proclaimed, July 12, 1909; transferred from Forest Service, U.S. Department of Agriculture, Aug. 10, 1933.	P.O. Box 649, Cave Junction, OR 97523.
Organ Pipe Cactus National Monument, Ariz.	329,064.73	1,625.27	330,690.00	Sonoran Desert plants and animals found nowhere else in United States are protected here, alongside traces of a historic trail, Camino del Diablo. Proclaimed, Apr. 13, 1937.	P.O. Box 38, Ajo, AZ 85321.

32

Petrified Forest National Park, Ariz.	94,189.33	94,189.33	Trees that have petrified, or changed to multicolored stone, Indian ruins and petroglyphs, and portions of the colorful Painted Desert are here. Proclaimed as a national monument, Dec. 8, 1906, changed to national park, Dec. 9, 1962. Boundary changes: July 31, 1911; Nov. 14, 1930; Nov. 30, 1931; Sept. 23, 1932; Mar. 28, 1958. Wilderness (50,260 acres) established Oct. 23, 1970.	Petrified Forest National Park, AZ 86025.
Pinnacles National Monument, Calif.	14,177.77	320.00	14,497.77	Spirelike rock formations 500 to 1,200 feet high, with caves and a variety of volcanic features, rise above the smooth contours of the surrounding countryside. Proclaimed, Jan. 16, 1908. Boundary changes: May 7, 1923; July 2, 1924; Apr. 13, 1931; July 11, 1933; Dec. 5, 1941.	Paicines, CA 95043.
Platt National Park, Okla.	911.97	911.97	Numerous cold mineral- and freshwater springs, including bromide waters, surface here. Established as Sulphur Springs National Reservation, July 1, 1902; established as Platt National Park, June 29, 1906. Boundary changes: Apr. 21, 1904; June 18, 1940.	P.O. Box 201, Sulphur, OK 73086.
Rainbow Bridge National Monument, Utah.	160.00	160.00	Greatest of the world's known natural bridges, this symmetrical arch of salmon-pink sandstone rises 309 feet above the floor of Bridge Canyon. Proclaimed, May 30, 1910.	C/o Glen Canyon National Recreation Area, P.O. Box 1507, Page, AZ 86040.
Redwood National Park, Calif.	27,953.71	34,350.49	62,304.20	Here, in a mixture of sun and fog, are coastal redwood forests with virgin groves of ancient trees, including the world's tallest. The park includes 40 miles of scenic Pacific coastline. Established, Oct. 2, 1968.	Drawer N, Crescent City, CA 95531.

33

Natural Areas

34

NAME AND LOCATION	ACREAGE			OUTSTANDING CHARACTERISTICS AND PERTINENT DATA	ADDRESS
	FEDERAL	NON- FEDERAL	GROSS		
Rocky Mountain National Park, Colo.	261, 196. 51	2, 594. 79	263, 791. 30	The park's rich scenery, typifying the massive grandeur of the Rocky Mountains, is accessible by Trail Ridge Rd., which crosses the Continental Divide. Peaks towering as high as 11,000 feet shadow wildlife and wildflowers in these 410 square miles of the Rockies' Front Range. Established, Jan. 26, 1915. Boundary changes: Feb. 14, 1917; Sept. 18, 1922; June 2, 1924; Feb. 24, 1925; June 9, 1926; June 21, 1930; July 17, 1930; Jan. 11, 1932; Mar. 5, 1936; Aug. 24, 1949; June 27, 1950; Apr. 21, 1959; Sept. 23, 1960; Oct. 26, 1974.	Estes Park, CO 80517.
Saguaro National Monument, Ariz.	78, 169. 51	1, 819. 29	79, 988. 80	Giant saguaro cactus, unique to the Sonoran Desert of southern Arizona and northwestern Mexico, sometimes reach a height of 50 feet in this cactus forest. Proclaimed, Mar. 1, 1933; transferred from Forest Service, U.S. Department of Agriculture, Aug. 10, 1933. Boundary change: Nov. 15, 1961.	P.O. Box 17210, Tucson, AZ 85731.

Sequoia National Park, Calif.	386, 471. 79	351. 21	386, 823. 00	Great groves of giant sequoias, among the world's oldest living things, and Mount Whitney, the highest mountain in the U.S. outside of Alaska, are spectacular attractions here in the High Sierra. Established, Sept. 25, 1890. Boundary changes: Oct. 1, 1890; July 3, 1926; Dec. 21, 1943; Oct. 9, 1959.	Three Rivers, CA 93271.
Shenandoah National Park, Va.	190, 416. 68	3. 45	190, 420. 13	Skyline Drive winds along the crest of this outstanding portion of the Blue Ridge Mountains, through hardwood forests and wildflowers, with spectacular vistas of historic Shenandoah Valley and the Piedmont along the way. Authorized, May 22, 1926; fully established Dec. 26, 1935. Boundary change: Feb. 16, 1928; land acquisitions, June 13, 1939; June 6, 1942; Sept. 13, 1960; June 30, 1961.	Luray, VA 22835.
Sunset Crater National Monument, Ariz.	3, 040. 00	3, 040. 00	Its upper part colored as if by sunset glow, this volcanic cinder cone with summit crater was formed just before A.D. 1100. Proclaimed, May 26, 1930; transferred from Forest Service, U.S. Department of Agriculture, Aug. 10, 1933.	Tuba Star Route, Flagstaff, AZ 86001.
Timpanogos Cave National Monument, Utah.	250. 00	250. 00	This colorful limestone cavern on the side of Mount Timpanogos is noted for helictites—water-created formations that grow in all directions and shapes, regardless of the pull of gravity. Proclaimed, Oct. 14, 1922; transferred from Forest Service, U.S. Department of Agriculture, Aug. 10, 1933.	R.R. 2, Box 200, American Fork, UT 84003.

35

Natural Areas

NAME AND LOCATION	ACREAGE			OUTSTANDING CHARACTERISTICS AND PERTINENT DATA	ADDRESS
	FEDERAL	NON- FEDERAL	GROSS		
Virgin Islands National Park, V.I.	11,760.71	2,709.67	14,470.38	The park covers about three-fourths of St. John Island and includes quiet coves, blue-green waters, and white sandy beaches fringed by lush green hills. Here, too, are early Carib Indian relics and the remains of Danish colonial sugar plantations. Authorized, Aug. 2, 1956. Boundary changes: June 29, 1960; Oct. 5, 1962.	P.O. Box 806, Charlotte Amalie, St. Thomas, VI 00801.
Voyageurs National Park, Minn.	31,092.67	188,035.33	219,128.00	Beautiful northern lakes, once the route of the French-Canadian voyageurs, are surrounded by forest in this land where geology and history capture your imagination. Land area: 139,128.00. Authorized, Jan. 8, 1971.	P.O. Drawer 50, International Falls, MN 56649.
White Sands National Monument, N. Mex.	144,751.77	582.99	145,334.76	Here, dunes of glistening white gypsum sands, 10 to 45 feet high, are home to small, light-colored animals that have adapted to this harsh environment. Proclaimed, Jan. 18, 1933. Boundary changes: Nov. 28, 1934; Aug. 29, 1938; June 6, 1942; June 24, 1953.	P.O. Box 458, Alamogordo, NM 88310.

36

Wind Cave National Park, S. Dak.	28,060.03	28,060.03	These limestone caverns in the scenic Black Hills are decorated by beautiful boxwork and calcite crystal formations. Elk, deer, pronghorn, prairie dogs, and bison live in the park. Established, Jan. 9, 1903. Boundary changes: Mar. 4, 1931; June 15, 1935; Aug. 9, 1946.	Hot Springs, SD 57747.
Yellowstone National Park, Wyo.-Mont.-Idaho.	2,219,736.88	85.82	2,219,822.70	This is the world's greatest geyser area, with Old Faithful and some 3,000 other geysers and hot springs. Here, too, are lakes, waterfalls, high mountains, and the Grand Canyon of the Yellowstone—all set apart in 1872 as the world's first national park. It is the largest park in the National Park System. Federal acreage: 2,037,248.67 in Wyo.; 151,000.21 in Mont.; 31,488.00 in Idaho. Established, Mar. 1, 1872. Boundary changes: May 26, 1926; Mar. 1, 1929; Apr. 19, 1930; Oct. 20, 1932.	Yellowstone National Park, WY 82190.
Yosemite National Park, Calif.	759,206.20	1,889.96	761,096.16	Granite peaks and domes rise high above broad meadows in the heart of the Sierra Nevada, and mountain lakes and sparkling waterfalls, including the Nation's highest, find their place here. Groves of giant sequoias dwarf other trees and tiny wildflowers. Established, Oct. 1, 1890. El Portal administrative site, 991.19 acres of Federal land adjacent to the park, authorized Sept. 2, 1958. Boundary changes: Feb. 7, 1905; June 11, 1906; May 28, 1928; Mar. 2, 1929; Apr. 14, 1930; Aug. 13, 1932; July 9, 1937; May 26, 1938; Sept. 2, 1958.	P.O. Box 577, Yosemite National Park, CA 95389.

37

Natural Areas

38

NAME AND LOCATION	ACREAGE			OUTSTANDING CHARACTERISTICS AND PERTINENT DATA	ADDRESS
	FEDERAL	NON- FEDERAL	GROSS		
Zion National Park, Utah.....	141,274.09	5,296.32	146,570.41	Colorful canyon and mesa scenery includes erosion and rockfault patterns that create phenomenal shapes and landscapes. Evidence of former volcanic activity is here, too. Proclaimed as Mukuntuweap National Monument, July 31, 1909; changed to Zion National Monument by Presidential Proclamation, Mar. 18, 1918; established as a national park, Nov. 19, 1919. On July 11, 1956, incorporated area of former Zion National Monument, which was established by Presidential Proclamation, Jan. 22, 1937. Other boundary changes: Mar. 18, 1918; June 13, 1930; Feb. 20, 1960.	Springdale, UT 84767.



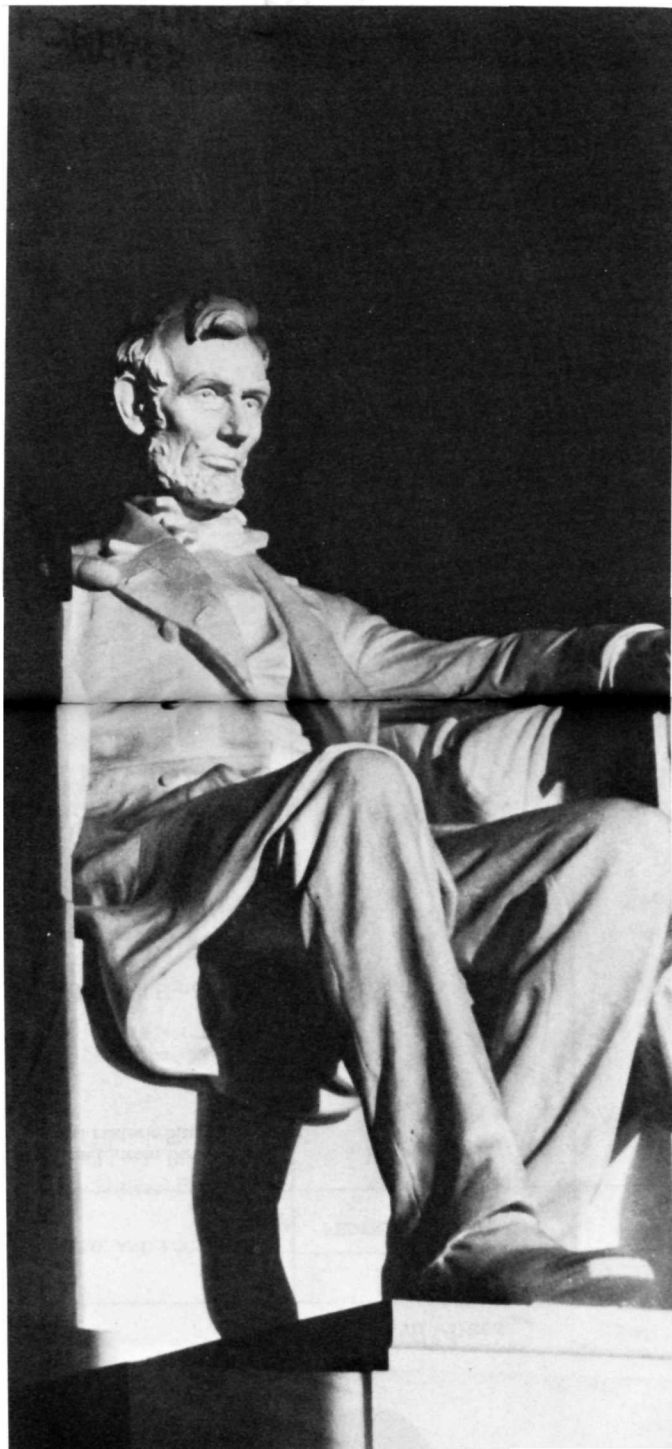


William Ranney's "Battle of Cowpens"
 Courtesy of South Carolina American
 Revolution Bicentennial Commission

historical areas

Although best known for its great scenic parks, the National Park System contains more than twice as many historical areas as natural areas. These historical areas preserve places and commemorate persons, events, and activities important in the Nation's past. They range from archeological sites associated with prehistoric Indian civilizations to sites related to the lives of modern Americans. Historical areas are customarily preserved or restored to reflect their appearance during the period of their greatest historical significance.

In recent years, **national historic site** has been the title most commonly applied by Congress in authorizing the addition of historical areas to the Park System. A variety of titles—**national military park**, **national battlefield park**, **national battlefield site**, and **national battlefield**—has been used for areas associated with American military history. But other areas such as **national monuments** and **national historical parks** may include features associated with military history. **National historical parks** are commonly areas of greater physical extent and complexity than national historic sites.



The title **national memorial** is most often used for areas that are primarily commemorative. But they need not be sites or structures historically associated with their subjects. For example, the home of Abraham Lincoln in Springfield, Ill., is a national historic site, but the Lincoln Memorial in the District of Columbia is a national memorial.

42

Several areas administered by National Capital Parks whose titles do not include the words "national memorial" are nevertheless classified as memorials. Please see the National Capital Parks section of this booklet for these areas.

	number	acreage
national battlefield parks	3	6,661.98
national battlefields	7	7,197.52
national battlefield sites	2	1,801.00
national cemeteries *	-----	218.36
national historical parks	16	61,952.06

national historic sites	52	13,556.34
national memorial parks	1	70,408.64
national memorials	21	5,917.71
national military parks	11	34,623.88
national monuments	46	244,585.75
national parks	1	52,036.24
parks (other)	4	4,366.78
white house	1	18.07
national mall	1	146.35
national visitor center	1	18.01
Total	167	503,508.69

43

* Acreage figures are for nine national cemeteries legally separate from, but administered in conjunction with, associated historical units of the National Park System. Five other national cemeteries have been legally incorporated into associated units and are not reflected in these figures.

Historical Areas

NAME AND LOCATION	ACREAGE			OUTSTANDING CHARACTERISTICS AND PERTINENT DATA	ADDRESS
	FEDERAL	NON- FEDERAL	GROSS		
Abraham Lincoln Birthplace National Historic Site, Ky.	116.50	116.50	An early 19th-century Kentucky cabin, symbolic of the one in which Lincoln was born, is preserved in a memorial building at the site of his birth. Established as Abraham Lincoln National Park, July 17, 1916; transferred from War Department, Aug. 10, 1933; changed to Abraham Lincoln National Historical Park, Aug. 11, 1939; changed to Abraham Lincoln Birthplace National Historic Site, Sept. 8, 1959. Boundary changes: May 27, 1949; April 11, 1972.	R.F.D. 1, Hodgenville, KY 42748.
Adams National Historic Site Mass.	8.45	8.45	Home of Presidents John Adams and John Quincy Adams, of U.S. Minister to Great Britain Charles Francis Adams, and of the writers and historians Henry Adams and Brooks Adams, this house reflects the influence of each of these distinguished men. Designated as Adams Mansion National Historic Site, Dec. 9, 1946; changed to Adams National Historic Site, Nov. 26, 1952. Boundary changes: Nov. 26, 1952; Apr. 11, 1972.	P.O. Box 531, Quincy, MA 02169.
Alibates Flint Quarries and Texas Panhandle Pueblo Culture National Monument, Tex.	92.56	92.56	For more than 10,000 years, pre-Columbian Indians dug agatized dolomite from quarries here to make projectile points, knives, scrapers, and other tools. Authorized, Aug. 21, 1965.	C/o Lake Meredith NRA, P.O. Box 1438, Fritch, TX 79036

Allegheny Portage Railroad National Historic Site, Pa.	649.57	117.48	767.05	The Allegheny Portage Railroad was built 1831-34 to lift passengers and cargos of Pennsylvania canal-boats over the Allegheny Mountains. Though abandoned in 1857, traces and structures can still be seen. Authorized, Aug. 31, 1964.	P. O. Box 247, Cresson, PA 16630.
Andersonville National Historic Site, Ga.	470.26	17.89	488.15	This Civil War prisoner-of-war camp commemorates the sacrifices borne by American prisoners not only in the 1861-65 conflict but in all wars. Site includes Andersonville National Cemetery. Authorized, Oct. 16, 1970.	Andersonville, GA 31711.
Andrew Johnson National Historic Site, Tenn.	16.68	16.68	The site includes the home and tailor shop of the 17th President, who served from 1865 to 1869, and the Andrew Johnson National Cemetery, where he is buried. Authorized as a national monument, Aug. 29, 1935; changed to national historic site, Dec. 11, 1963. Boundary change: Dec. 11, 1963.	Depot St., Greeneville, TN 37743.
Antietam National Battlefield Site, Md.	966.24	833.76	1,800.00	Gen. Robert E. Lee's first invasion of the North was ended on this battlefield in 1862. Antietam (Sharpsburg) National Cemetery—5,032 interments, 1,836 unidentified—adjoins the park; grave space is not available. Park acreage does not include the 11.36 acres comprising the cemetery. Park: Established, Aug. 30, 1890; transferred from War Department, Aug. 10, 1933. Boundary changes: May 14, 1940, Apr. 22, 1960; May 31, 1963. Cemetery: Probable date of Civil War interments, 1862. Placed under War Department, July 14, 1870; transferred from War Department, Aug. 10, 1933.	Box 158, Sharpsburg, MD 21782.

Historical Areas

NAME AND LOCATION	ACREAGE			OUTSTANDING CHARACTERISTICS AND PERTINENT DATA	ADDRESS
	FEDERAL	NON- FEDERAL	GROSS		
Appomattox Court House National Historical Park, Va.	994.51	0.18	994.69	Here on Apr. 9, 1865, Gen. Robert E. Lee surrendered the Confederacy's largest field army to Lt. Gen. Ulysses S. Grant. Authorized as Appomattox Battlefield site, June 18, 1930; transferred from War Department, Aug. 10, 1933; authorized as National Historical Monument, Aug. 13, 1935; designated National Historical Park, Apr. 15, 1954. Boundary change: Feb. 23, 1939.	P.O. Box 218, Appomattox, VA 24522.
Arkansas Post National Memorial, Ark.	304.60	304.60	On this site the first permanent French settlement in the Lower Mississippi Valley was founded in 1686. Authorized, July 6, 1960.	Gillett, AR 72055.
Arlington House, The Robert E. Lee Memorial, Va.	3.47	3.47	This antebellum home of the Custis and Lee families overlooks the Potomac River and Washington, D.C. Authorized, Mar. 4, 1925; transferred from War Department, Aug. 10, 1933; made a permanent memorial to Robert E. Lee by Act of Congress, June 29, 1955. Name changed by Public Law 92-333 to Arlington House, The Robert E. Lee Memorial, June 30, 1972. Boundary change: Nov. 3, 1959.	C/o George Washington Memorial Parkway, Turkey Run Park, McLean, VA 22101
Aztec Ruins National Monument, N. Mex.	27.14	27.14	Ruins of this large Pueblo Indian community of 12th-century masonry and timber buildings have been largely excavated and stabilized. The ruins, misnamed by later settlers, are unrelated to the Aztecs of Mexico. Proclaimed, Jan. 24, 1923. Boundary changes: July 2, 1928; Dec. 19, 1930; May 27, 1948.	P.O. Box U, Aztec, NM 87410.
Bandelier National Monument, N. Mex.	29,661.20	29,661.20	On the canyon-slashed slopes of the Pajarito Plateau are the ruins of many cliff houses of 15th-century Pueblo Indians. Proclaimed, Feb. 11, 1916; transferred from Forest Service, U.S. Department of Agriculture, Feb. 25, 1932. Boundary changes: Feb. 25, 1932; Jan. 9, 1961; May 27, 1963.	Los Alamos, NM 87544.
Bent's Old Fort National Historic Site, Colo.	178.00	178.00	As a principal outpost of civilization on the Southern Plains in the early 1800's and rendezvous for Indians, the post became the center of a vast fur-trading empire in the West. Authorized, June 3, 1960.	P.O. Box 581, La Junta, CO 81050.
Big Hole National Battlefield, Mont.	655.61	655.61	Nez Perce Indians and U.S. Army troops fought here in 1877—a dramatic episode in the long struggle to confine the Nez Perce, and other Indians, to reservations. Established by Executive Order as Big Hole Battlefield National Monument, June 23, 1910; transferred from War Department, Aug. 10, 1933; changed to Big Hole National Battlefield, May 17, 1963. Boundary changes: June 29, 1939; May 17, 1963; Dec. 1, 1971.	P.O. Box 237, Wisdom, MT 59761.
Booker T. Washington National Monument, Va.	223.92	223.92	This site was the birthplace and early childhood home of the famous black leader and educator. Authorized, Apr. 2, 1956.	Route 1, Box 195, Hardy, VA 24101.

Historical Areas

48

NAME AND LOCATION	ACREAGE			OUTSTANDING CHARACTERISTICS AND PERTINENT DATA	ADDRESS
	FEDERAL	NON- FEDERAL	GROSS		
Boston National Historical Park, Mass	28.10	6.64	34.74	This park includes Faneuil Hall, Old North Church, Old State House, Bunker Hill, Old South Meeting House, Boston Naval Shipyard, berth for U.S.S. Constitution, and Paul Revere House. Authorized, Oct. 26, 1974.	North Atlantic Regional Office, 150 Causeway St., Room 715, Boston, MA 02114.
Brices Cross Roads National Battlefield Site, Miss.	1.00	1.00	The Confederate cavalry was employed with extraordinary skill here during the battle of June 10, 1864. Established, Feb. 21, 1929; transferred from War Department, Aug. 10, 1933.	C/o Natchez Trace Parkway, R.R. 1, NT-143, Tupelo, MS 38801.
Cabrillo National Monument, Calif.	1,347.66	2.72	1,350.38	Juan Rodriguez Cabrillo, Portuguese explorer who claimed the west coast of the United States for Spain in 1542, is memorialized here. Gray whales migrate offshore during the winter. Proclaimed, Oct. 14, 1913; transferred from War Department, Aug. 10, 1933. Boundary changes: Feb. 2, 1959; Sept. 28, 1974.	P.O. Box 6175, San Diego, CA 92106.

49

Canyon de Chelly National Monument, Ariz.	83,840.00	83,840.00	At the base of sheer red cliffs and in caves in canyon walls are ruins of Indian villages built between A.D. 350 and 1300. Modern Navajo Indians live and farm here. Authorized, Feb. 14, 1931. Boundary change: Mar. 1, 1933.	P.O. Box 588, Chinle, AZ 86503.
Carl Sandburg Home National Historic Site, N.C.	246.58	.79	247.37	"Connemara" was the farm home of the noted poet-author for the last 22 years of his life. During his residence here, several of his books were published. Authorized, Oct. 17, 1968; established Oct. 27, 1972; opened, May 11, 1974.	P.O. 395, Flat Rock, NC 28731.
Casa Grande National Monument, Ariz.	472.50	472.50	Perplexing ruins of a massive four-story building, constructed of high-lime desert soil by Indians who farmed the Gila Valley 600 years ago, raise many unanswered questions for modern man. By Executive Order of June 22, 1892, President Benjamin Harrison reserved the "Casa Grande Ruins" and certain adjacent lands for the protection of the ruin pursuant to the act of Mar. 2, 1889. Proclaimed as Casa Grande National Monument, Aug. 3, 1918. Boundary changes: Dec. 10, 1909; June 7, 1926.	P.O. Box 518, Coolidge, AZ 85228
Castillo de San Marcos National Monument, Fla.	19.78	.71	20.49	Construction of this oldest masonry fort in continental United States was started in 1672 by the Spanish to protect St. Augustine, first permanent settlement by Europeans in continental United States (1565). Proclaimed as Fort Marion National Monument, Oct. 15, 1924; transferred from War Department, Aug. 10, 1933; changed to Castillo de San Marcos National Monument, June 5, 1942. Boundary changes: June 29, 1936; July 5, 1960.	1 Castillo Dr., St. Augustine, FL 32084

Historical Areas

NAME AND LOCATION	ACREAGE			OUTSTANDING CHARACTERISTICS AND PERTINENT DATA	ADDRESS
	FEDERAL	NON- FEDERAL	GROSS		
Castle Clinton National Monument, N.Y.	1.00	1.00	Built 1808-11, this structure served successively as a defense for New York Harbor, a promenade and entertainment center, and an immigration depot through which more than 8 million people entered the United States from 1855 to 1890. Authorized, Aug. 12, 1946.	C/o New York City Group, NPS, 26 Wall St., New York, NY 10005.
Chaco Canyon National Monument, N. Mex.	20,990.27	520.05	21,510.32	The canyon, with hundreds of smaller ruins, contains 13 major Indian ruins unsurpassed in the United States, representing the highest point of Pueblo pre-Columbian civilization. Proclaimed, Mar. 11, 1907. Boundary change: Jan. 10, 1928.	Star Route, Bloomfield, NM 87413.
Chalmette National Historical Park, La.	141.72	1.13	142.85	Scene of the major part of the Battle of New Orleans in the War of 1812, America won a brilliant victory here. The park includes Chalmette National Cemetery; grave sites are not available. Established as Chalmette Monument and Grounds, Mar. 4, 1907; transferred from War Department, Aug. 10, 1933; established as Chalmette National Historical Park, Aug. 10, 1939. Boundary change: Mar. 20, 1958.	P.O. Box 429, Arabi, LA 70032.

Chamizal National Memorial, Tex.	54.90	54.90	The peaceful settlement of a 99-year boundary dispute between the United States and Mexico is memorialized here. The Chamizal Treaty, ending the dispute, was signed in 1963. An amphitheater and 500-seat auditorium are used by theatrical groups from both nations. Authorized, June 30, 1966; established, Feb. 4, 1974.	Southwest National Bank Building, Room 620, 300 East Main Dr., El Paso, TX 79901
Chesapeake and Ohio Canal National Historical Park, Md.-D.C.-W. Va.	10,366.18	9,974.41	20,340.59	The park follows the route of the 184-mile canal along the Potomac River between Washington, D.C., and Cumberland, Md. The canal was built between 1828 and 1850. Federal acreage: 10,266.18 in Md.; 96.64 in D.C.; 3.40 in W. Va. Placed under National Park Service, Sept. 23, 1938; appropriations authorized, Aug. 7, 1946; proclaimed Chesapeake and Ohio Canal National Monument, Jan. 18, 1961; changed to national historical park, Jan. 8, 1971.	Box 158, Sharpsburg, MD 21782.
Chickamauga and Chattanooga National Military Park, Ga.-Tenn.	8,071.94	16.79	8,088.73	This park includes the Civil War battlefields of Chickamauga, Orchard Knob, Lookout Mountain, and Missionary Ridge. Acreage: 6,157.11 in Ga.; 1,914.83 in Tenn. Established, Aug. 19, 1890; transferred from War Department, Aug. 10, 1933. Boundary changes: Aug. 9, 1939; Mar. 5, 1942; June 24, 1948.	P.O. Box 2126, Fort Oglethorpe, GA 30742.

Historical Areas

NAME AND LOCATION	ACREAGE			OUTSTANDING CHARACTERISTICS AND PERTINENT DATA	ADDRESS
	FEDERAL	NON-FEDERAL	GROSS		
Christiansted National Historic Site, V.I.	27.15	1.25	28.40	Colonial development of the Virgin Islands is commemorated by 18th- and 19th-century structures in the capital of the former Danish West Indies on St. Croix Island. Discovered by Columbus in 1493, St. Croix was purchased by the United States in 1917. Designated as Virgin Islands National Historic Site, Mar. 4, 1952; changed to Christiansted National Historic Site, Jan. 16, 1961. Boundary change: June 27, 1962.	P.O. Box 160, Christiansted, VI 00820
City of Refuge National Historical Park, Hawaii	181.80	181.80	Until 1819, vanquished Hawaiian warriors, noncombatants, and taboo breakers could escape death by reaching this sacred ground. Prehistoric house sites, royal fishponds, coconut groves, and spectacular shore scenery comprise the park. Authorized, July 26, 1955.	P.O. Box 128, Honaunau, Kona, HI 96726.
Clara Barton National Historic Site, Md.	1.09	1.09	This 38-room home of the founder of the American Red Cross was for 7 years headquarters of that organization. The house is in Glen Echo, Md. Authorized, Oct. 26, 1974.	National Capital Parks, 1100 Ohio Dr. SW., Wash., DC 20242.

52

Colonial National Historical Park, Va.	8,189.78	1,020.50	9,210.28	This park encompasses most of Jamestown Island, site of the first permanent English settlement; Yorktown, scene of the culminating battle of the American Revolution in 1781, and a 23-mile parkway connecting these and other colonial sites with Williamsburg and Cape Henry Memorial, which marks the approximate site of the first landing of Jamestown's colonists in 1607. Yorktown National Cemetery, containing Civil War gravesites—2,183 interments, 1,434 unidentified, adjoins the park; grave space is not available. Park acreage does not include the 2.91 acres comprising the cemetery. Park: Authorized as Colonial National Monument, July 3, 1930; designated as a national historical park, June 5, 1936; Cape Henry Memorial Site transferred from War Department, effective June 15, 1938. Boundary changes: June 5, 1936; June 28, 1938; Dec. 24, 1942; Dec. 23, 1944; Mar. 24, 1945; May 12, 1948. Cemetery: Probable date of Civil War interments, 1866. Transferred from War Department, Aug. 10, 1933.	P.O. Box 210, Yorktown, VA 23690.
Coronado National Memorial, Ariz.	2,834.16	2,834.16	Our Hispanic heritage and the first European exploration of the Southwest, by Francisco Vazquez de Coronado in 1540-42, are commemorated here, near the point where Coronado's expedition entered what is now the United States. Authorized as International Memorial, Aug. 18, 1941; redesignated, July 9, 1952; established Nov. 5, 1952. Boundary change: Sept. 2, 1960.	Star Route, Hereford, AZ 85615.

53

Historical Areas

NAME AND LOCATION	ACREAGE			OUTSTANDING CHARACTERISTICS AND PERTINENT DATA	ADDRESS
	FEDERAL	NON- FEDERAL	GROSS		
Cowpens National Battlefield, S.C.	228. 51	604. 67	833. 18	Brig. Gen. Daniel Morgan won a decisive Revolutionary War victory here over British Lt. Col. Banastre Tarleton on Jan. 17, 1781. Established as National Battlefield Site, Mar. 4, 1929; transferred from War Department, Aug. 10, 1935; redesignated, Apr. 11, 1972. Boundary changes: July 18, 1958; Apr. 11, 1972.	C/o Kings Mountain National Military Park, P.O. Box 31, Kings Mountain, NC 28086.
Cumberland Gap National Historical Park, Ky.-Va.-Tenn.	20, 219. 23	60. 00	20, 279. 23	This mountain pass on the Wilderness Road, explored by Daniel Boone, developed into a main artery of the great trans-Allegheny migration for settlement of "the Old West" and an important military objective in the Revolutionary and Civil Wars. Federal acreage: 10,686.33 in Ky.; 7,526.01 in Va.; 2,006.89 in Tenn. Authorized, June 11, 1940. Boundary changes: July 26, 1961; Oct. 26, 1974.	P.O. Box 840, Middlesboro, KY 40965.
Custer Battlefield National Monument, Mont.	765. 34	765. 34	Here the famous Battle of the Little Big Horn between five companies of the 7th U.S. Cavalry and the Sioux and Northern Cheyenne Indians was fought on June 25-26, 1876. Lt. Col. George A. Custer and about 268 of his force were killed. Ordered established as a national cemetery, by Secretary of War, Jan. 29, 1879; proclaimed National Cemetery of Custer's Battlefield Reservation, Dec. 7, 1886; transferred from War Department, July 1, 1940; changed to Custer Battlefield National Monument by Act of Congress, Mar. 22, 1946. Boundary change: Apr. 14, 1926.	P.O. Box 416, Crow Agency, MT 59022.
De Soto National Memorial, Fla.	24. 78	5. 22	30. 00	The landing of Spanish explorer Hernando de Soto in Florida in 1539 and the first extensive organized exploration of what is now the southern United States by Europeans are commemorated here. Authorized, Mar. 11, 1948. Boundary change: Sept. 8, 1960.	P.O. Box 1377, Bradenton, FL 33506.
Edison National Historic Site, N.J.	19. 96	19. 96	Buildings and equipment used by Thomas A. Edison for many of his experiments are here, as are his library, papers, and models of some of his inventions. The site also includes Glenmont, Edison's 23-room home, with original furnishings. Edison Home National Historic Site designated, Dec. 6, 1955; Edison Laboratory National Monument proclaimed, July 14, 1956; areas combined as Edison National Historic Site, Sept. 5, 1962. Boundary change: Sept. 5, 1962.	P.O. Box 126, Orange, NJ 07051.
Effigy Mounds National Monument, Iowa.	1, 373. 80	93. 70	1, 467. 50	The monument contains outstanding examples of prehistoric burial mounds in the shapes of birds and bears. Proclaimed, Oct. 25, 1949. Boundary change: May 27, 1961.	P.O. Box K, McGregor, IA 52157.

Historical Areas

56

NAME AND LOCATION	ACREAGE			OUTSTANDING CHARACTERISTICS AND PERTINENT DATA	ADDRESS
	FEDERAL	NON- FEDERAL	GROSS		
Eisenhower National Historic Site, Pa.	492.54	492.54	This was the home and farm of President and Mrs. Dwight D. Eisenhower. <i>Not open to the public.</i> Designated, Nov. 27, 1967; authorized by Act of Congress, Dec. 2, 1969.	C/o Gettysburg National Military Park, P.O. Box 70, Gettysburg, PA 17325.
El Morro National Monument, N. Mex.	959.92	318.80	1,278.72	"Inscription Rock" is a soft sandstone monolith on which are carved hundreds of inscriptions, including those of 17th-century Spanish explorers and 19th-century American emigrants and settlers. The monument also includes pre-Columbian petroglyphs. Proclaimed, Dec. 8, 1906. Boundary changes: June 18, 1917; June 14, 1950.	Ramah, NM 87321.

57

Federal Hall National Memorial, N.Y.	.4545	This graceful building is on the site of the original Federal Hall where: the trial of John Peter Zenger, defending freedom of the press, was held in 1735; the Stamp Act Congress convened, 1765; the Second Continental Congress met, 1785; Washington took the oath as first U.S. President, and the Bill of Rights was adopted, 1789. Present building was a Federal financial center. Designated as Federal Hall Memorial National Historic Site, May 26, 1939; changed to Federal Hall National Memorial, Aug. 11, 1955.	C/o New York City Group, NPS, 26 Wall St., New York, NY 10005.
Ford's Theatre National Historic Site, D.C.	.2525	On Apr. 14, 1865, President Lincoln was shot while attending a show here. He was carried across the street to the Petersen house, where he died the next morning. The theatre contains the Olroyd Collection of Lincolniana. Act of Apr. 7, 1866 provided for purchase of Ford's Theatre by Federal Government; designation changed to Lincoln Museum, Feb. 12, 1932; redesignated Ford's Theatre (Lincoln Museum), April 14, 1965. House Where Lincoln Died authorized, June 11, 1896. Both areas transferred from Office of Public Buildings and Public Parks of the National Capital, Aug. 10, 1933; combined as Ford's Theatre National Historic Site, June 23, 1970. Boundary change: June 23, 1970.	C/o National Capital Parks West, 1100 Ohio Dr. SW, Washington, DC 20242.
Fort Bowie National Historic Site, Ariz.	970.00	970.00	Established in 1862, this fort was the focal point of military operations against Geronimo and his band of Apaches. The ruins can be reached only by trail. Authorized, Aug. 30, 1964. Established, July 29, 1972.	P.O. Box 158, Bowie, AZ 85605.

Historical Areas

58

NAME AND LOCATION	ACREAGE			OUTSTANDING CHARACTERISTICS AND PERTINENT DATA	ADDRESS
	FEDERAL	NON- FEDERAL	GROSS		
Fort Caroline National Memorial, Fla.	128.37	.51	128.88	The fort overlooks the site of a French Huguenot colony of 1564-65, the second French attempt at settlement within the present United States. Here, the French and Spanish began two centuries of European colonial rivalry in North America. Authorized, Sept. 21, 1950. Boundary change: April 11, 1972.	12713 Fort Caroline Rd., Jacksonville, FL 32225.
Fort Clatsop National Memorial, Oreg.	124.97	124.97	The Lewis and Clark Expedition camped here in the winter of 1805-6. Authorized, May 29, 1958.	Route 3, Box 604-FC, Astoria, OR 97103.
Fort Davis National Historic Site, Tex.	460.00	460.00	A key post in the West Texas defensive system, the fort guarded emigrants on the San Antonio-El Paso road from 1854 to 1891. Authorized, Sept. 8, 1961.	P.O. Box 1456, Fort Davis, TX 79734.

59

Fort Donelson National Military Park, Tenn.	513.05	24.90	537.95	The first major victory for the Union Army in the Civil War occurred here in February 1862 under the leadership of Ulysses S. Grant. Fort Donelson (Dover) National Cemetery—1,042 interments, 512 unidentified—adjoins the park. Park acreage does not include the 15.34 acres comprising the cemetery. Park: Established, Mar. 26, 1928; transferred from War Department, Aug. 10, 1933. Boundary changes: Aug. 30, 1937; Sept. 8, 1960. Cemetery: Probable date of Civil War interments, 1867; transferred from War Department, Aug. 10, 1933.	P.O. Box F, Dover, TN 37058.
Fort Frederica National Monument, Ga.	210.72	3.80	214.52	Gen. James E. Oglethorpe built this British fort in 1736-48, during the Anglo-Spanish struggle for control of what is now southeastern United States. Authorized, May 26, 1936. Boundary changes: Sept. 20, 1950; May 16, 1958.	P.O. Box 816, St. Simons Island, GA 31522.
Fort Jefferson National Monument, Fla.	47,125.00	47,125.00	Built in 1856 to help control the Florida Straits, this is the largest all-masonry fortification in the Western world; it served as a Federal military prison during and after the Civil War. The bird refuge and marine life here are features. Land area 39.28 acres. Proclaimed, Jan. 4, 1935.	C/o Everglades National Park, P.O. Box 279, Homestead, FL 33030.
Fort Laramie National Historic Site, Wyo.	562.79	8.57	571.36	A fur-trade post once stood here, but the surviving buildings are those of a major military post that guarded covered-wagon trails to the West, 1834-90. Proclaimed as a national monument, July 16, 1938; changed to national historic site, Apr. 29, 1960. Boundary change: April 29, 1960.	Fort Laramie, WY 82212.

Historical Areas

NAME AND LOCATION	ACREAGE			OUTSTANDING CHARACTERISTICS AND PERTINENT DATA	ADDRESS
	FEDERAL	NON- FEDERAL	GROSS		
Fort Larned National Historic Site, Kans.	672.39	46.00	718.39	The fort protected traffic along the Santa Fe Trail, was the key military base in the Indian war of 1868-69, and served as an Indian agency. Authorized, Aug. 31, 1964.	Route 3, Larned, KS 67550.
Fort McHenry National Monument and Historic Shrine, Md.	43.26	43.26	Successful defense of this fort in the War of 1812, Sept. 13-14, 1814, inspired Francis Scott Key to write "The Star Spangled Banner." Authorized as Fort McHenry National Park, Mar. 3, 1925; transferred from War Department, Aug. 10, 1933; changed to Fort McHenry National Monument and Historic Shrine by Act of Congress, Aug. 11, 1939. Boundary change: June 5, 1936.	Baltimore, MD 21230.
Fort Matanzas National Monument, Fla.	298.51	298.51	This Spanish fort was built in 1740-42 to protect St. Augustine from the British. Proclaimed, Oct. 15, 1924; transferred from War Department, Aug. 10, 1933. Boundary changes: Jan. 9, 1935; Mar. 24, 1948.	C/o Castillo de San Marcos National Monument, 1 Castillo Dr., St. Augustine FL 32084.

Fort Necessity National Battlefield, Pa.	350.26	561.24	911.50	The opening battle of the French and Indian War was fought here July 3, 1754, when colonials under Lt. Col. George Washington, 22, were defeated by French troops and Indians. Established as a national battlefield site, Mar. 4, 1931; transferred from War Department, Aug. 10, 1933; changed to national battlefield, Aug. 10, 1961. Boundary change: Oct. 26, 1974.	Rt. 1, Box 360, Farmington, PA 15437.
Fort Point National Historic Site, Calif.	29.00	29.00	This classic brick and granite mid-19th century coastal fortification is the largest on the west coast of North America. Established, Oct. 16, 1970.	P.O. Box 9163, Presidio of San Francisco, CA 94129.
Fort Pulaski National Monument, Ga.	5,365.13	250.37	5,615.50	Bombardment of this early 19th-century fort by Federal rifled cannon in 1862 first demonstrated the ineffectiveness of old-style masonry fortifications. Proclaimed, Oct. 15, 1924; transferred from War Department, Aug. 10, 1933. Boundary changes: June 26, 1936; May 25, 1959.	P.O. Box 98, Savannah Beach, GA 31328.
Fort Raleigh National Historic Site, N.C.	140.48	18.12	158.60	The first English settlement in North America was attempted here (1585-87). The fate of Sir Walter Raleigh's "Lost Colony" remains a mystery. Designated, Apr. 5, 1941. Boundary change: Aug. 7, 1961.	C/o Cape Hatteras National Seashore, P.O. Box 457, Manteo, NC 27954.
Fort Smith National Historic Site, Ark.	12.82	5.76	18.58	One of the first U.S. military posts in the Louisiana Territory, the fort was a center of authority for the untamed region to the West from 1817 to 1890. Authorized, Sept. 13, 1961.	P.O. Box 1406, Fort Smith, AR 72901.

Historical Areas

62

NAME AND LOCATION	ACREAGE			OUTSTANDING CHARACTERISTICS AND PERTINENT DATA	ADDRESS
	FEDERAL	NON- FEDERAL	GROSS		
Fort Stanwix National Monument, N.Y.	15.52	15.52	The American stand here in August 1777 was a major factor in repulsing the British invasion from Canada. The fort was also the site of the Treaty of Fort Stanwix with the Iroquois Nov. 5, 1768. <i>Open to the public, but under development.</i> Authorized, Aug. 21, 1935; acquisition completed, 1973.	112 E. Park St., Rome, NY 13440.
Fort Sumter National Monument, S.C.	64.27	64.27	Scene of the first engagement of the Civil War, April 12, 1861, the park also embraces Fort Moultrie where a decisive encounter of the Revolution occurred, June 28, 1776. The grave of the Seminole Chief Osceola is here. Authorized, Apr. 28, 1948; accepted by the U.S. Department of the Interior from the Department of the Army, July 12, 1948.	Drawer R, Sullivans Island, SC 29482.
Fort Union National Monument, N. Mex.	720.60	720.60	Ruins of this key fort on the Santa Fe Trail, which shaped Southwest destiny from 1851 to 1891, have been stabilized to prevent further deterioration. Established Apr. 5, 1956.	Watrous, NM 87753.

63

Fort Union Trading Post National Historic Site, N. Dak.-Mont.	121.09	278.60	399.69	The trading post that stood here was the principal fur-trading depot in the Upper Missouri River region from 1829 to 1867. Only the foundations remain today. Federal acreage: 74.09 in N. Dak.; 47.00 in Mont. Authorized, June 20, 1966.	C/o Theodore Roosevelt National Memorial Park, Medora, ND 58645.
Fort Vancouver National Historic Site, Wash.	201.36	7.88	209.24	As the western headquarters of the Hudson's Bay Company 1825-49, the fort was the hub of trading activities and seat of political and military authority for the Pacific Northwest; U.S. military reservation, 1849-1949. Authorized as a national monument, June 19, 1948; changed to national historic site, June 30, 1961. Boundary changes: Jan. 15, 1958; June 30, 1961.	Vancouver, WA 98661.
Fort Washington Park, Md.	341.00	341.00	This fort across the Potomac from Mt. Vernon, built to protect Washington, D.C., was begun in 1814 to replace an 1809 fort destroyed by the British. Recreational facilities are included in the park. Transfer from the War Department authorized May 29, 1930, effected in 1940.	C/o National Capital Parks, 1100 Ohio Dr. SW, Wash- ington, D.C. 20242.
Frederick Douglass Home, D.C.	8.08	8.08	From 1877 to 1895, this was the home of the Nation's leading 19th-century black spokesman and U.S. minister to Haiti, 1889. Authorized, Sept. 5, 1962.	C/o National Capital Parks- East, 5210 Indian Head Hwy., Oxon Hill, MD 20021.

Historical Areas

64

NAME AND LOCATION	ACREAGE			OUTSTANDING CHARACTERISTICS AND PERTINENT DATA	ADDRESS
	FEDERAL	NON- FEDERAL	GROSS		
Fredericksburg and Spotsylvania County Battlefields Memorial National Military Park, Va.	3,904.25	2,141.04	6,045.29	<p>Portions of four major Civil War Battlefields—Fredericksburg, Chancellorsville, the Wilderness, and Spotsylvania Court House—comprise the park. The battles occurred between 1862 and 1864.</p> <p>Fredericksburg National Cemetery—15,333 interments, 12,746 unidentified—is near the park; grave space is not available. Park acreage does not include the 12 acres comprising the cemetery.</p> <p>Park: Established, Feb. 14, 1927; transferred from War Department, Aug. 10, 1933. Cemetery: Probable date of unidentified Civil War interments, 1865. Transferred from War Department, Aug. 10, 1933.</p>	P.O. Box 679, Fredericksburg, VA 22401.
General Grant National Memorial, N.Y.	.7676	<p>This memorial to Ulysses S. Grant, the Union commander who brought the Civil War to an end, includes the tombs of General and Mrs. Grant. As the President of the United States (1869-77) Grant signed the act establishing the first national park, Yellowstone, Mar. 1, 1872.</p> <p>Dedicated Apr. 27, 1897. Legislature in 1956 approved transfer by Grant Monument Association and the City of New York to Federal ownership; accepted by Congress, Aug. 14, 1958; placed under National Park Service, May 1, 1959.</p>	C/o New York City Group, NPS, 26 Wall St., New York, NY 10005.

George Rogers Clark National Historical Park, Ind.	24.30	24.30	<p>This classic memorial, near the site of old Fort Sackville, commemorates the seizure of the fort from the British by Lt. Col. George Rogers Clark, Feb. 25, 1779.</p> <p>Authorized, July 23, 1966.</p>	115 Dubois St., Vincennes, IN 47591.
George Washington Birth- place National Monument, Va.	455.98	455.98	<p>Birthplace of the first U.S. President, the park includes a memorial, mansion and gardens, and the tombs of his father, grandfather, and great-grandfather.</p> <p>Established, Jan. 23, 1930. Boundary changes: Mar. 30, 1931, Apr. 11, 1972.</p>	Washington's Birthplace, VA 22575.
George Washington Carver National Monument, Mo.	210.00	210.00	<p>Existing landmarks at the birthplace and childhood home of the famous black agronomist include a spring, a grove of trees, and the graves of the Moses Carver family.</p> <p>Authorized, July 14, 1943.</p>	P.O. Box 38, Diamond, MO 64840.
Gettysburg National Military Park, Pa.	3,228.77	681.05	3,909.82	<p>The great Civil War battle fought here July 1-3, 1863, repulsed the second Confederate invasion of the North. Gettysburg National Cemetery—6,270 interments, 1,665 unidentified—adjoins the park. President Lincoln delivered his Gettysburg address here in dedicating the cemetery Nov. 19, 1863. Park acreage does not include the 20.58 acres comprising the cemetery.</p> <p>Park: Established, Feb. 11, 1895; transferred from War Department, Aug. 10, 1933. Boundary changes: Jan. 31, 1948; July 31, 1953. Cemetery: Beginning date of Civil War interments, Oct. 1863. Placed under War Department, July 14, 1870. Transferred from War Department, Aug. 10, 1933. Boundary change: June 19, 1948.</p>	P.O. Box 70, Gettysburg, PA 17325.

65

Historical Areas

66

NAME AND LOCATION	ACREAGE			OUTSTANDING CHARACTERISTICS AND PERTINENT DATA	ADDRESS
	FEDERAL	NON- FEDERAL	GROSS		
Gila Cliff Dwellings National Monument, N. Mex.	533.13	533.13	These well-preserved cliff dwellings in natural cavities on the face of an overhanging cliff were inhabited from about A.D. 100 to 1300. Proclaimed, Nov. 16, 1907; transferred from Forest Service, U.S. Department of Agriculture, Aug. 10, 1933. Boundary change: Apr. 17, 1962.	Gila Hot Springs Route 11, Box 100, Silver City, NM 88061.
Golden Spike National Historic Site, Utah.	2,203.20	2,203.20	Completion of the first transcontinental railroad in the United States was celebrated here where the Central Pacific and Union Pacific Railroads met in 1869. Designated as a national historic site in non-Federal ownership, Apr. 2, 1957; authorized for Federal ownership and administration by Act of Congress, July 30, 1965. Boundary change: July 30, 1965.	Promontory Star Route, Corinne, UT 84307.
Gran Quivira National Monument, N. Mex.	610.94	610.94	Ruins of two mission buildings and 18 Pueblo Indian house mounds mark the sites of a 17th-century Spanish mission and of an earlier Indian community. Proclaimed, Nov. 1, 1909. Boundary change: Nov. 25, 1919.	Route 1, Mountainair, NM 87036.

Grand Portage National Monument, Minn.	709.97	709.97	This 9-mile portage was a rendezvous for traders and trappers on a principal route of Indians, explorers, missionaries, and fur traders into the Northwest. The Grand Portage post of the North West Company has been reconstructed here. Designated as a national historic site, Sept. 15, 1951; changed to national monument by Act of Congress, Sept. 2, 1958.	P.O. Box 666, Grand Marais, MN 55604.
Grant-Kohrs Ranch National Historic Site, Mont.	1,333.17	231.13	1,564.30	This was the headquarters area of one of the largest and best known 19th-century range ranches in the country. Authorized, Aug. 25, 1972.	P.O. Box 799, Deer Lodge, MT 59722.
Guilford Courthouse National Military Park, N.C.	220.01	.43	220.44	The battle fought here on Mar. 15, 1781, opened the campaign which led to Yorktown and the end of the Revolution. Established, Mar. 2, 1917; transferred from War Department, Aug. 10, 1933.	P.O. Box 9334, Plaza Station, Greensboro, NC 27408.
Hamilton Grange National Memorial, N.Y.	.7171	"The Grange," named after his grandfather's estate in Scotland, was the home of Alexander Hamilton, American statesman and first Secretary of U.S. Treasury. Authorized, Apr. 27, 1962.	287 Convent Ave., New York, NY 10031.
Hampton National Historic Site, Md.	45.42	45.42	This is a fine example of the lavish Georgian mansions built in America during the latter part of the 18th century. Designated, June 22, 1948. Boundary change: Dec. 23, 1953.	535 Hampton Lane, Towson, MD 21204.

67

Historical Areas

68

NAME AND LOCATION	ACREAGE			OUTSTANDING CHARACTERISTICS AND PERTINENT DATA	ADDRESS
	FEDERAL	NON- FEDERAL	GROSS		
Harpers Ferry National Historical Park, Md.-W. Va.	1, 327. 50	630. 44	1, 957. 94	Because of its strategic location at the confluence of the Shenandoah and Potomac Rivers, this town changed hands many times during the Civil War. John Brown's raid took place here in 1859. Federal acreage: 763.07 in Md.; 564.43 in W. Va. Authorized as a national monument, June 30, 1944; changed to national historical park, May 29, 1963. Boundary change: July 14, 1960; Oct. 24, 1974.	P.O. Box 65, Harpers Ferry WV 25425.
Herbert Hoover National Historic Site, Iowa.	128. 68	57. 92	186. 60	The birthplace cottage and boyhood home of the 31st President, 1929-33, and the gravesites of President and Mrs. Hoover are within the park. The Herbert Hoover Library, administered by the National Archives and Records Service, General Services Administration, is adjacent to the site. Authorized, Aug. 12, 1965.	P.O. Box 607, West Branch, IA 52358.
Hohokam Pima National Monument, Ariz.	1, 555. 40	1, 555. 40	Preserved here are the archeological remains of the Hohokam (Pima Indian word meaning "those who have gone") culture. <i>Not open to the public.</i> Authorized, Oct. 21, 1972.	C/o Casa Grande National Monument, P.O. Box 518, Coolidge, AZ 85228.

69

Home of Franklin D. Roosevelt National Historic Site, N.Y.	187. 69	187. 69	This was the birthplace, lifetime residence, and "Summer White House" of the 32d President. He entertained many distinguished visitors here. The gravesites of President and Mrs. Roosevelt are in the Rose Garden. Designated, Jan. 15, 1944. A Joint Resolution of Congress, July 18, 1939, authorized acceptance by the Federal Government of title to any part of Hyde Park Estate donated to the United States. Full title to property accepted, Nov. 21, 1945. Boundary changes: July 1, 1953; Nov. 9, 1964.	Hyde Park, Dutchess County, NY 12538.
Homestead National Monu- ment of America, Nebr.	180. 91	13. 66	194. 57	One of the first claims under the Homestead Act of 1862 was filed for this land. Authorized, Mar. 19, 1936.	Beatrice, NB 68310.
Hopewell Village National Historic Site, Pa.	848. 06	848. 06	This is one of the finest examples of a rural American 19th-century ironmaking village. The buildings include the blast furnace and auxiliary structures. Designated, Aug. 3, 1938. Boundary changes: June 6, 1942; July 24, 1946.	R.D. 1, Box 345, Elverson, PA 19520.
Horseshoe Bend National Military Park, Ala.	2, 040. 00	2, 040. 00	Gen. Andrew Jackson's forces broke the power of the Creek Indian Confederacy and opened Alabama and other parts of the Old Southwest to settlement after fierce fighting here Mar. 27, 1814, in the battle on the Tallapoosa River. Authorized, July 25, 1956.	Route 1, Box 63, Daviston, AL 36256.

Historical Areas

70

NAME AND LOCATION	ACREAGE			OUTSTANDING CHARACTERISTICS AND PERTINENT DATA	ADDRESS
	FEDERAL	NON- FEDERAL	GROSS		
Hovenweep National Monument, Colo.-Utah.	785.43	785.43	Pre-Columbian Indians built these 6 groups of towers, pueblos, and cliff dwellings. Federal acreage: 345.43 in Colo.; 440.00 in Utah. Proclaimed, Mar. 2, 1923. Boundary changes: Apr. 26, 1951; Nov. 20, 1952; Apr. 6, 1956.	C/o Mesa Verde National Park, Mesa Verde National Park, CO 81330.
Hubbell Trading Post National Historic Site, Ariz.	160.09	160.09	This still-active trading post illustrates the influence of reservation traders on the Indians' way of life. Authorized, Aug. 28, 1965.	P.O. Box 298, Ganado, AZ 86505.

71

Independence National Historical Park, Pa.	16.79	4.67	21.46	The park includes structures and properties in old Philadelphia associated with the American Revolution and the founding and growth of the United States—Independence Hall, the Liberty Bell, Congress Hall, old City Hall, the Second Bank of the United States, and Deshler-Morris House in Germantown. Authorized, June 28, 1948. On Mar. 16, 1959, incorporated Philadelphia Custom House (Second Bank of the United States), designated a national historic site May 26, 1939. Other boundary changes: Aug. 6, 1956; Aug. 21, 1958; Aug. 27, 1958; Mar. 7, 1959; June 23, 1959; Sept. 14, 1959; Aug. 21, 1964; Oct. 26, 1974.	313 Walnut St., Philadelphia, PA 19106.
Jefferson National Expansion Memorial National Historic Site, Mo.	90.96	90.96	This park on St. Louis' Mississippi riverfront memorializes Thomas Jefferson and others who directed territorial expansion of the United States. Eero Saarinen's prize-winning, stainless steel gateway arch commemorates Westward pioneers. Visitors may ascend the 630-foot-high arch. In the nearby courthouse Dred Scott sued for freedom in the historic slavery case. Designated, Dec. 20, 1935. Boundary change: Aug. 29, 1969.	11 North 4th St., St. Louis, MO 63102.
John Fitzgerald Kennedy National Historic Site, Mass.	.0909	This house is the birthplace and early boyhood home of the 35th President. Authorized, May 26, 1967.	83 Beals St., Brookline, MA 02146.

Historical Areas

72

NAME AND LOCATION	ACREAGE			OUTSTANDING CHARACTERISTICS AND PERTINENT DATA	ADDRESS
	FEDERAL	NON- FEDERAL	GROSS		
John Muir National Historic Site, Calif.	8. 90	8. 90	The home of John Muir and adjacent Martinez Adobe commemorate Muir's contribution to conservation and literature. Authorized, Aug. 31, 1964.	4202 Alhambra Ave., Martinez, CA 94553.
Johnstown Flood National Memorial, Pa.	66. 76	39. 94	106. 70	The tragic Johnstown Flood of 1889 caused by a break in the South Fork Dam is memorialized here. Authorized, Aug. 31, 1964. Boundary change: Apr. 11, 1972.	C/o Allegheny Portage Railroad National Historic Site, P.O. Box 247, Cresson, PA 16630
Kennesaw Mountain National Battlefield Park, Ga.	2, 882. 37	2. 01	2, 884. 38	Two engagements took place here between Union and Confederate forces during the Atlanta Campaign, June 20-July 2, 1864. Authorized as a national battlefield site, Feb. 8, 1917; transferred from War Department, Aug. 10, 1933; changed to national battlefield park, June 26, 1935. Boundary change: Aug. 9, 1939.	P.O. Box 1167, Marietta, GA 30061.
Kings Mountain National Military Park, S.C.	3, 945. 29	3, 945. 29	American frontiersman defeated the British here on Oct. 7, 1780, at a critical point during the Revolution. Established, Mar. 3, 1931; transferred from War Department, Aug. 10, 1933. Boundary change: June 23, 1959.	P.O. Box 31, Kings Mountain, NC 28086.

Knife River Indian Villages National Historic Site, N. Dak.	1, 292. 00	1, 292. 00	Remnants of five Hidatsa villages, last used in 1845, are an archeological treasure of the Plains Indians. Authorized, Oct. 26, 1974.	C/o Theodore Roosevelt National Memorial Park, Medora, ND 58645.
Lincoln Boyhood National Memorial, Ind.	152. 65	47. 35	200. 00	On this southern Indiana farm, Abraham Lincoln grew from youth into manhood. Authorized, Feb. 19, 1962.	Lincoln City, IN 47552.
Lincoln Home National Historic Site, Ill.	3. 31	8. 97	12. 28	Abraham Lincoln left his house here in 1861 to accept the Presidency. It was the only home he ever owned. Authorized, Aug. 18, 1971.	413 South Eighth St., Springfield, IL 62701.
Lincoln Memorial, D.C.	163. 63	163. 63	This classical structure of great beauty contains a marble seated statue 19 feet high of the Great Emancipator by sculptor Daniel Chester French. Architect of the building was Henry Bacon. Authorized, Feb. 9, 1911; transferred from Office of Public Buildings and Public Parks of the National Capital, Aug. 10, 1933.	C/o National Capital Parks-West, 1100 Ohio Dr. SW., Washington, D.C. 20242.

73

Historical Areas

74

NAME AND LOCATION	ACREAGE			OUTSTANDING CHARACTERISTICS AND PERTINENT DATA	ADDRESS
	FEDERAL	NON-FEDERAL	GROSS		
Longfellow National Historic Site, Mass.	1.98	1.98	Poet Henry Wadsworth Longfellow lived here from 1837 to 1882 while teaching at Harvard. The house had been General Washington's headquarters during the siege of Boston, 1775-76. Authorized, Oct. 9, 1972.	105 Brattle St., Cambridge, MA 02138.
Lyndon B. Johnson National Historic Site, Tex.	205.50	35.14	240.64	The birthplace, boyhood home, and ranch of the 36th President, 1963-69, and his grandparents' old ranch make up the park. Authorized, Dec. 2, 1969.	P.O. Box 329, Johnson City, TX 78636.
Lyndon Baines Johnson Memorial Grove on the Potomac, D.C.	15.00	15.00	This living memorial to the 36th President overlooks the Potomac River vista of the Capital. The design features 500 white pines and engravings on Texas granite. Authorized Dec. 28, 1973; dedicated Sept. 27, 1974.	C/o National Capital Parks, 1100 Ohio Dr. SW., Washington, DC 20242.

75

Manassas National Battlefield Park, Va.	2,892.04	139.63	3,031.67	The Battles of First and Second Manassas were fought here July 21, 1861, and Aug. 28-30, 1862. The 1861 battle was the first test of Northern and Southern military prowess. Here, Confederate Brig. Gen. Thomas J. Jackson acquired his nickname "Stonewall." Designated, May 10, 1940. Boundary change: Apr. 17, 1954.	P.O. Box 350, Manassas, VA 22110.
Mar-A-Lago National Historic Site, Fla.	17.17	17.17	This private mansion is representative of the affluent society's way of life in the 1920s. <i>Not open to the public.</i> Designated, Jan. 16, 1969; authorized, Oct. 21, 1972.	P.O. Box 2527, Palm Beach, FL 33480.
Martin Van Buren National Historic Site, N.Y.	42.00	42.00	Lindenwald estate, south of Albany, was the home of the eighth President—a leader in the emergence of Jacksonian Democracy—for 21 years until his death in 1862. Authorized, Oct. 26, 1974.	C/o National Park Service, Roosevelt-Vanderbilt, Hyde Park, Dutchess County, NY 12538.
Mesa Verde National Park, Colo.	51,488.60	547.64	52,036.24	These pre-Columbian cliff dwellings and other works of early man are the most notable and best preserved in the United States. Established, June 29, 1906. Boundary changes: June 30, 1913; Feb. 26, 1931; May 27, 1932; Dec. 23, 1963.	Mesa Verde National Park, CO 81330.
Minute Man National Historical Park, Mass.	611.49	134.91	746.40	Scene of the fighting, Apr. 19, 1775, that opened the American Revolution, the park includes North Bridge, Minute Man statue, 4 miles of Battle Road between Lexington and Concord, and "The Wayside," Nathaniel Hawthorne's home. Designated as national historic site, Apr. 14, 1959; changed to national historic park, Sept. 21, 1959.	P.O. Box 160, Concord, MA 01742.

Historical Areas

76

NAME AND LOCATION	ACREAGE			OUTSTANDING CHARACTERISTICS AND PERTINENT NATA	ADDRESS
	FEDERAL	NON-FEDERAL	GROSS		
Montezuma Castle National Monument, Ariz.	824.92	16.83	841.75	One of the best-preserved cliff dwellings in the United States, this 5-story, 20-room castle is 90 percent intact. Montezuma Well is also of archeological and geological interest. Proclaimed, Dec. 8, 1906. Boundary changes: Feb. 23, 1937; Oct. 19, 1943; Apr. 4, 1947; June 23, 1959.	P.O. Box 219, Camp Verde, AZ 86322.
Moores Creek National Military Park, N.C.	42.23	42.23	The battle on Feb. 27, 1776, between North Carolina Patriots and Loyalists, is commemorated here. The Patriot victory notably advanced the revolutionary cause in the South. Established, June 2, 1926; transferred from War Department, Aug. 10, 1933. Boundary change: Sept. 27, 1944.	Currie, Pender County, NC 28435.
Morristown National Historical Park, N.J.	1,339.78	204.39	1,544.17	For two winters during the Revolution—1777 and 1779–80—the Continental Army established winter quarters here. Washington's headquarters, Ford Mansion, is included in the park. Authorized, Mar. 2, 1933. Boundary changes: Jan. 27, 1954; Sept. 18, 1964; Jan. 17, 1969; Oct. 26, 1974.	C/o Morristown-Edison Group, NPS, P.O. Box 1136R, Morristown, NJ 07960.

77

Mound City Group National Monument, Ohio	67.50	67.50	Burial mounds of Hopewell Indians (300 B.C.–600 A.D.) yield copper breastplates, tools, obsidian blades, shells, ornaments of grizzlybear teeth, and stone pipes carved as birds and animals. Proclaimed, Mar. 2, 1923; transferred from War Department, Aug. 10, 1933. Boundary change: Apr. 3, 1952.	P.O. Box 327, Chillicothe, OH 45601.
Mount Rushmore National Memorial, S. Dak.	1,245.95	32.50	1,278.45	Colossal heads of Presidents George Washington, Thomas Jefferson, Abraham Lincoln, and Theodore Roosevelt were sculptured by Gutzon Borglum on the face of a granite mountain. Authorized, Mar. 3, 1925. Boundary changes: May 22, 1940; Oct. 6, 1949.	Keystone, SD 57751.
National Mall, D.C.	146.35	146.35	This landscaped park extending from the Capitol to the Washington Monument was envisioned as a formal park in the L'Enfant Plan for the city of Washington. Approved July 16, 1790, except for 42 acres transferred later from other agencies; 30 Seaton Park acres include some transfers from other agencies and D.C. Transferred from Office of Public Buildings and Public Parks of the National Capitol, Aug. 10, 1933.	C/o National Capital Parks, 1100 Ohio Dr. SW., Washington, DC 20242.
National Visitor Center, D.C.	18.10	18.10	The design for the National Visitor Center encompasses a diverse complex of programs and facilities to welcome visitors to the Nation's Capital. Conversion of Washington's Union Station for this purpose began in 1974. Under a 25-year lease extending from completion of construction, the National Park Service will manage the Center. Authorized Mar. 12, 1968. Act amended: July 6, 1973; Oct. 26, 1974.	Union Station, Washington, DC 20002.

Historical Areas

NAME AND LOCATION	ACREAGE			OUTSTANDING CHARACTERISTICS AND PERTINENT DATA	ADDRESS
	FEDERAL	NON- FEDERAL	GROSS		
Navajo National Monument, Ariz.	360.00	360.00	Betatakin, Keet Seel, and Inscription House are three of the largest and most elaborate cliff dwellings known. Proclaimed, Mar. 20, 1909. Boundary change: Mar. 14, 1912.	Tonalea, AZ 86044.
Nez Perce National Historical Park, Idaho.	1,836.64	343.86	2,180.50	The history and culture of the Nez Perce Indian country are preserved, commemorated, and interpreted here. Four federally-owned sites are administered by the National Park Service, and 18 sites through co-operative agreements. Authorized, May 15, 1965.	P.O. Box 93, Spalding, ID 83551.
Ocmulgee National Monument, Ga.	683.48	683.48	The cultural evolution of the Indian mound-builder civilization in the southern United States is represented in the remains of mounds and villages. Authorized, June 14, 1934. Boundary change: June 13, 1941.	P.O. Box 4186, Macon, GA 31208.
Pea Ridge National Military Park, Ark.	4,278.75	21.60	4,300.35	The Union victory here on Mar. 7-8, 1862, in one of the major engagements of the Civil War west of the Mississippi, led to the Union's total control of Missouri. Authorized, July 20, 1956.	Pea Ridge, AR 72751.

78

Pecos National Monument, N. Mex.	341.30	341.30	Foundations of a 17th-century mission church, ruins of an 18th-century church, ancient pueblo structural remains, and restored kivas comprise the park. This site was once a landmark on the Santa Fe Trail, ruins of which are still in existence. Authorized, June 28, 1965.	P.O. Drawer 11, Pecos, NM 87552.
Perry's Victory and International Peace Memorial, Ohio.	22.52	3.12	25.64	Commodore Oliver H. Perry won the greatest naval battle of War of 1812 on Lake Erie. The memorial, the world's most massive Doric column, was constructed in 1912-15 "to inculcate the lessons of international peace by arbitration and disarmament." Constructed, 1912-15, with funds from Federal Government and 9 States. Established, June 2, 1936, as national monument. Redesignated as Perry's Victory and International Peace Memorial, Oct. 26, 1972. Boundary change: Oct. 26, 1972.	P.O. Box 78, Put-in-Bay, OH 43456.
Petersburg National Battlefield, Va.	1,357.74	1,358.62	2,716.36	The Union Army waged a 10-month campaign here, 1864-65, to seize Petersburg, center of the railroads supplying Richmond and Gen. Robert E. Lee's army. Poplar Grove (Petersburg) National Cemetery—6,315 interments, 4,110 unidentified—is near the park; grave space is not available. Park acreage does not include the 8.72 acres comprising the cemetery. Park: Established as a national military park, July 3, 1926; transferred from War Department, Aug. 10, 1933; changed to national battlefield, Aug. 24, 1962. Boundary changes: June 5, 1942; Sept. 7, 1949; April 11, 1972. Cemetery: Probable date of Civil War interments, 1866. Transferred from War Department, Aug. 10, 1933.	P.O. Box 549, Petersburg, VA 23803.

79

Historical Areas

80

NAME AND LOCATION	ACREAGE			OUTSTANDING CHARACTERISTICS AND PERTINENT DATA	ADDRESS
	FEDERAL	NON-FEDERAL	GROSS		
Pipe Spring National Monument, Ariz.	40.00	40.00	The historic fort and other structures, built here by Mormon pioneers, memorialize the struggle for exploration and settlement of the Southwest. Proclaimed, May 31, 1923.	Moccasin, AZ 86022.
Pipestone National Monument, Minn.	281.78	281.78	From this quarry Indians obtained materials for making peace pipes used in ceremonies. Established, Aug. 25, 1937. Boundary change: June 18, 1956.	P.O. Box 727, Pipestone, MN 56164.
Piscataway Park, Md.	3,570.09	444.14	4,014.23	The tranquil view from Mount Vernon of the Maryland Potomac shore is preserved here in this pilot project in the use of easements to protect parklands from obtrusive, urban expansion. Authorized, Oct. 4, 1961. Boundary change: July 19, 1966.	C/o National Capital Park-East, 5210 Indian Head Highway, Oxon Hill, MD 20021.
Puukohola Heiau National Historic Site, Hawaii.	46.20	30.37	76.57	Ruins of Puukohola Heiau ("Temple on the Hill of the Whale"), built by King Kamehameha the Great during his rise to power, are preserved. Authorized, Aug. 17, 1972.	C/o City of Refuge National Historical Park, Honaunau, Kona, HI 96726.

Richmond National Battlefield Park, Va.	745.93	745.93	The park commemorates several battles to capture Richmond, the Confederate capital, during the Civil War. Authorized, Mar. 2, 1936. Boundary change: Mar. 3, 1956.	3215 East Broad St., Richmond, VA 23223.
Roger Williams National Memorial, R.I.	4.58	4.58	This memorial is in honor of the founder of the Rhode Island Colony and a pioneer in religious freedom. <i>Not open to the public.</i> Authorized, Oct. 22, 1965.	North Atlantic Regional Office, 150 Causeway St., Boston, MA 02114.
Russell Cave National Monument, Ala.	310.45	310.45	An almost continuous archeological record of human habitation from at least 6000 B.C. to about A.D. 1650 is revealed in this cave. Proclaimed, May 11, 1961.	Route 1, Box 175, Bridgeport, AL 35740.
Sagamore Hill National Historic Site, N.Y.	85.00	85.00	This estate was the home of Theodore Roosevelt from 1885 until his death in 1919. Authorized, July 25, 1962.	MTD Route, Box 304, Oyster Bay, NY 11771.
Saint Croix Island National Monument, Maine.	22.19	13.20	35.39	The attempted French settlement of 1604, which led to the founding of New France, is commemorated on Saint Croix Island in the Saint Croix River on the Canadian border. <i>No Federal facilities.</i> Authorized, June 8, 1949.	C/o Acadia National Park, Route 1, Box 1, Bar Harbor ME 04609.
Saint-Gaudens National Historic Site, N.H.	83.00	3.00	86.00	This memorial to sculptor Augustus Saint-Gaudens contains his home, "Aspet," and his studios and gardens. Authorized, Aug. 31, 1964.	R.D. 2, Windsor, VT 05089.

81

Historical Areas

NAME AND LOCATION	ACREAGE			OUTSTANDING CHARACTERISTICS AND PERTINENT DATA	ADDRESS
	FEDERAL	NON- FEDERAL	GROSS		
St. Thomas National Historic Site, V.I.	1.66	1.66	The site contains Fort Christian, completed in 1680, the oldest standing structure in the Virgin Islands and hub of the early Danish settlement. Designated, Dec. 24, 1960. Title to property ceded to the Government of the Virgin Islands, Feb. 2, 1975. Site will be included under Affiliated Areas in future issues of this publication.	C/o Virgin Islands NP, P.O. Box 806, Charlotte Amalie, St. Thomas, VI 00801.
Salem Maritime National Historic Site, Mass.	8.80	8.80	During the Revolution, this was the only major port never occupied by the British. Later, it was one of the Nation's great mercantile centers. Other structures of maritime and architectural significance include the Custom House where Nathaniel Hawthorne worked. Designated, Mar. 17, 1938. Boundary change: Dec. 12, 1963.	Custom House, 174 Derby St., Salem, MA 01970.
San Juan Island National Historical Park, Wash.	1,725.45	26.54	1,751.99	The park commemorates the peaceful relations maintained by the United States, Great Britain, and Canada since the 1872 boundary dispute here. English and American military campsites are included. Authorized, Sept. 9, 1966.	P.O. Box 549, Friday Harbor, WA 98250.
San Juan National Historic Site, P.R.	53.20	53.20	These massive masonry fortifications, oldest in the territorial limits of the United States, were begun by the Spanish in the 16th century to protect a strategic harbor guarding the sea lanes to the New World. Designated, Feb. 14, 1949.	P.O. Box 712, Old San Juan, PR 00902.
Saratoga National Historical Park, N.Y.	2,432.41	2,432.41	The American victory here over the British in 1777 was the turning point of the Revolution and one of the decisive battles in world history. Maj. Gen Philip Schuyler's country home is nearby. Authorized, June 1, 1938.	R.D. 1, Box 113-C, Stillwater, NY 12170.
Saugus Iron Works National Historic Site, Mass.	8.51	8.51	This reconstruction of the first integrated iron works in North America, begun in 1646, includes the iron-master's house, furnace, forge, and rolling and slitting mill. Authorized, Apr. 5, 1968.	244 Central St., Saugus, MA 01906.
Scotts Bluff National Monument, Nebr.	2,708.80	279.17	2,987.97	Rising 800 feet above the valley floor, this massive promontory was a landmark on the Oregon Trail, associated with mass migration between 1843 and 1869 across the Great Plains. Proclaimed, Dec. 12, 1919. Boundary changes: May 9, 1924; June 1, 1932; Mar. 29, 1940; June 30, 1961.	P.O. Box 427, Gering, NB 69341.

Historical Areas

84

NAME AND LOCATION	ACREAGE			OUTSTANDING CHARACTERISTICS AND PERTINENT DATA	ADDRESS
	FEDERAL	NON- FEDERAL	GROSS		
Sewall-Belmont House National Historic Site, D.C.	0.35	0.35	Rebuilt after fire damage from the War of 1812, this red brick house is one of the oldest on Capitol Hill. It has been the National Women's Party headquarters since 1929 and commemorates the party's founder and women's suffrage leader, Alice Paul, and associates. Authorized, Oct. 26, 1974.	144 Constitution Ave., NE., Washington, DC 20002.
Shiloh National Military Park, Tenn.	3,698.00	55.00	3,753.00	The bitter battle fought here Apr. 6-7, 1862, prepared the way for Maj. Gen. U. S. Grant's successful siege of Vicksburg. Well-preserved prehistoric Indian mounds overlook the river. Shiloh (Pittsburg Landing) National Cemetery—3,746 interments, 2,370 unidentified—adjoins the park. Park acreage does not include the 10.05 acres comprising the cemetery. Park: Established, Dec. 27, 1894; transferred from War Department, Aug. 10, 1933. Boundary changes: June 25, 1947; Aug. 22, 1957; May 16, 1958. Cemetery: Probable date of Civil War interments, 1866. Transferred from War Department, Aug. 10, 1933.	Shiloh, TN 38376.

85

Sitka National Historical Park, Alaska.	57.63	50.08	107.71	The site of the 1804 fort and battle which marked the last major Tlingit Indian resistance to Russian colonization is preserved here. Tlingit totem poles are exhibited. Proclaimed, Mar. 23, 1910; changed from Sitka National Monument, Oct. 18, 1972. Boundary changes: Sept. 25, 1952; Oct. 18, 1972.	P.O. Box 738, Sitka, AK 99835.
Springfield Armory National Historic Site, Mass.	55.00	55.00	Over a span of 200 years this small-arms manufacturing center produced such weapons as the 1795 flintlock and the 1783, 1903, M-1, and M-14 rifles. The largest collection of Confederate and other small arms is maintained here. <i>No Federal facilities.</i> Authorized, Oct. 26, 1974.	North Atlantic Regional Office, 150 Causeway St., Boston, MA 02114.
Statue of Liberty National Monument, N.Y.-N.J.	58.38	58.38	The famous 152-foot copper statue bearing the torch of freedom was a gift of the French people in 1886 to commemorate the alliance of the two nations in the American Revolution. The monument includes the American Museum of Immigration, in the base of the statue, and Ellis Island, an immigration port from 1892 to 1954. Federal acreage: 13.38 in N.Y.; 45.00 in N.J. Proclaimed, Oct. 15, 1924; transferred from War Department, Aug. 10, 1933. Boundary changes: Sept. 7, 1937; May 11, 1965.	Liberty Island, New York, NY 20004.

Historical Areas

NAME AND LOCATION	ACREAGE			OUTSTANDING CHARACTERISTICS AND PERTINENT DATA	ADDRESS
	FEDERAL	NON- FEDERAL	GROSS		
Stones River National Battlefield, Tenn.	329.96	329.96	The fierce midwinter battle, which began the Federal offensive to trisect the Confederacy, took place here Dec. 21, 1862-Jan. 2, 1863. Stones River (Murfreesboro) National Cemetery—6,831 interments, 2,562 unidentified—adjoins the park. Park acreage does not include the 20.09 acres comprising the cemetery. Park: Established as a national military park, Mar. 3, 1927; transferred from War Department, Aug. 10, 1933; changed to national battlefield, Apr. 22, 1960. Boundary change: Apr. 22, 1960. Cemetery: Probable date of Civil War interments, 1865. Transferred from War Department, Aug. 10, 1933.	P.O. Box 1039, Murfreesboro, TN 37130.
Thaddeus Kosciuszko National Memorial, Pa.01	.01	The life and work of this Polish-born patriot and hero of the American Revolution are commemorated here. Authorized, Oct. 21, 1972.	C/o Independence National Historical Park, 313 Walnut St., Philadelphia, PA 19106.
Theodore Roosevelt Birthplace National Historic Site, N.Y.	.1111	The 26th President was born in this four-story brownstone house on Oct. 27, 1858. Authorized, July 25, 1962.	28 E. 20th St., New York, NY 10003.

86

Theodore Roosevelt Inaugural National Historic Site, N.Y.	1.03	1.03	Theodore Roosevelt took the oath of office as President of the United States on Sept. 14, 1901, here in the Ansley Wilcox House, after the assassination of President William McKinley. Authorized, Nov. 2, 1966.	641 Delaware Ave., Buffalo, NY 14209.
Theodore Roosevelt Island, D.C.	88.50	88.50	On this wooded island sanctuary in the Potomac River, trails lead to an imposing statue of Roosevelt, the conservation-minded 26th President. His tenets on nature, manhood, youth, and the State are inscribed on tablets. Authorized, May 21, 1932; transferred from Office of Public Buildings and Public Parks of the National Capital, Aug. 10, 1933.	C/o George Washington Memorial Parkway, Turkey Run Park, McLean, VA 22101.
Theodore Roosevelt National Memorial Park, N. Dak.	69,515.88	892.76	70,408.64	The park includes scenic badlands along the Little Missouri River and part of Theodore Roosevelt's Elkhorn Ranch. Established, Apr. 25, 1947. Boundary changes: June 10, 1948; June 12, 1948; Mar. 24, 1956; Nov. 6, 1963.	Medora, ND 58645.
Thomas Jefferson Memorial, D.C.	18.36	18.36	This circular, colonnaded structure, in the classic style introduced in this country by Jefferson, memorializes the author of the Declaration of Independence and President from 1801 to 1809. The interior walls present inscriptions from his writings. The heroic statue was sculptured by Rudolph Evans. Architects were John Russell Pope and associates, Otto Eggers and Daniel Higgins. Authorized, June 26, 1934.	C/o National Capital Parks West, 1100 Ohio Dr. SW., Washington, DC 20242

87

Historical Areas

88

NAME AND LOCATION	ACREAGE			OUTSTANDING CHARACTERISTICS AND PERTINENT DATA	ADDRESS
	FEDERAL	NON-FEDERAL	GROSS		
Tonto National Monument, Ariz.	1, 120.00	1, 120.00	These well-preserved cliff dwellings were occupied during the early part of the 14th century by Solado Indians who farmed in the Salt River Valley. Proclaimed, Dec. 19, 1907; transferred from Forest Service, U.S. Department of Agriculture, Aug. 19, 1933. Boundary change: Apr. 1, 1937.	P.O. Box 707, Roosevelt, AZ 85545.
Tumacacori National Monument, Ariz.	10. 15	10. 15	This historic Spanish Catholic mission building stands near the site first visited by Jesuit Father Kino in 1691. Proclaimed, Sept. 15, 1908. Boundary change: Apr. 28, 1959.	P.O. Box 67, Tumacacori, AZ 85640.
Tupelo National Battlefield, Miss.	1.00	1.00	Here, on July 13-14, 1864, Lt. Gen. Nathan Bedford Forrest's cavalry battled a Union force of 14,000 sent to keep Forrest from cutting the railroad supplying Maj. Gen. William T. Sherman's march on Atlanta. Established as a national battlefield site, Feb. 21, 1929; transferred from War Department, Aug. 10, 1933; changed to national battlefield and boundary changed Aug. 10, 1961.	C/o Natchez Trace Parkway, R.R. 1, N.T.-143, Tupelo, MS 38801.

Tuskegee Institute National Historic Site, Ala.	68.80	68.80	Booker T. Washington founded this college for black Americans in 1881. Preserved here are the student-made brick buildings, Washington's home, and the George Washington Carver Museum. Authorized, Oct. 26, 1974.	Tuskegee, AL 36088.
Tuzigoot National Monument, Ariz.	57.78	57.78	Ruins of a large Indian pueblo which flourished in the Verde Valley between A.D. 1100 and 1450 have been excavated here. Proclaimed, July 25, 1939.	P.O. Box 68, Clarkdale, AZ 86324.
Vanderbilt Mansion National Historic Site, N.Y.	211.65	211.65	This palatial mansion is a fine example of homes built by 19th-century millionaires. Designated, Dec. 18, 1940.	Vanderbilt Mansion NHS, Hyde Park, Dutchess County, NY 12538.
Vicksburg National Military Park, Miss.	1, 594.86	145.92	1, 740.78	Fortifications of the 47-day siege of Vicksburg ending July 3, 1863, are remarkably preserved here. Victory gave the North control of the Mississippi River and cut the Confederacy in two. Vicksburg National Cemetery—18,207 interments, 12,954 unidentified—adjoins the park; grave space is not available. Park acreage does not include the 116.28 acres comprising the cemetery. Park: Established, Feb. 21, 1899; transferred from War Department, Aug. 10, 1933. Boundary change: June 4, 1963. Cemetery: Probable date of Civil War interments, 1865. Transferred from War Department, Aug. 10, 1933. Boundary change: Mar. 2, 1955.	P.O. Box 349, Vicksburg, MS 39180.

89

Historical Areas

NAME AND LOCATION	ACREAGE			OUTSTANDING CHARACTERISTICS AND PERTINENT DATA	ADDRESS
	FEDERAL	NON- FEDERAL	GROSS		
Walnut Canyon National Monument, Ariz.	2,011.62	238.84	2,249.46	These cliff dwellings were built in shallow caves under ledges of limestone by Pueblo Indians about 800 years ago. Proclaimed, Nov. 30, 1915; transferred from Forest Service, U.S. Department of Agriculture, Aug. 10, 1933. Boundary change: Sept. 24, 1938.	Route 1, Box 790, Flagstaff, AZ 86001.
Washington Monument, D.C.	106.01	106.01	This 555-foot obelisk honoring George Washington is a dominating feature of the Nation's Capital. The architect-designer was Robert Mills. Authorized, Jan. 31, 1848; transferred from Office of Public Buildings and Public Parks of the National Capital, Aug. 10, 1933.	C/o National Capital Parks-West, 1100 Ohio Dr. SW., Washington, DC 20242.

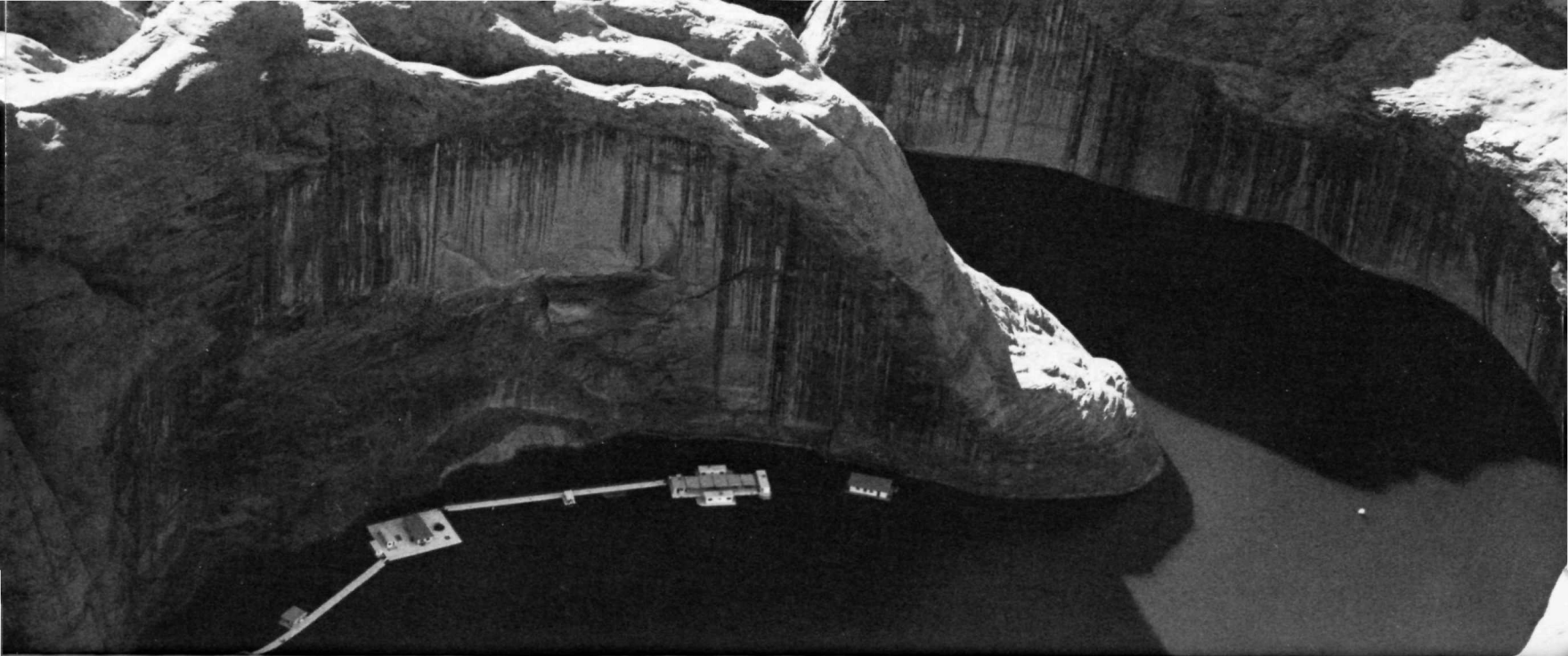
White House, D.C.	18.07	18.07	This has been the residence and office of the Presidents of the United States since Nov. 1800. The cornerstone was laid Oct. 13, 1792, on the site selected by George Washington and included in the L'Enfant Plan. The building was renovated 1949-52. Transferred, Aug. 10, 1943, to National Park Service, U.S. Department of the Interior, the direct legal successor of three Federal Commissioners appointed by the President under act of July 16, 1790, and who directed initial construction. Their authority developed through acts of May 1, 1802; Apr. 29, 1816; Mar. 3, 1849; Mar. 2, 1867; July 1, 1898; Feb. 26, 1925; Mar. 3, 1933; and Executive Order of June 10, 1933. Under act of Sept. 22, 1961, "the White House * * * shall be administered pursuant to the act of August 25, 1916" and supplementary and amendatory acts.	C/o National Capital Parks-West, 1100 Ohio Dr. SW., Washington, DC 20242.
Whitman Mission National Historic Site, Wash.	98.15	98.15	Dr. and Mrs. Marcus Whitman ministered to spiritual and physical needs of the Indians here until slain by a few of them in 1847. The Mission was a landmark on the Oregon Trail. Authorized as Whitman National Monument, June 29, 1936; changed to Whitman Mission National Historic Site, Jan. 1, 1963. Boundary changes: Feb. 7, 1961; Feb. 8, 1963.	Route 2, Walla Walla, WA 99362.
William Howard Taft National Historic Site, Ohio.	.8383	This house was the birthplace and boyhood home of the only man to serve as both President and Chief Justice of the United States—27th President, 1909-13; U.S. Chief Justice, 1921-30. Authorized, Dec. 2, 1969.	2038 Auburn Ave., Cincinnati, OH 45219.

Historical Areas

NAME AND LOCATION	ACREAGE			OUTSTANDING CHARACTERISTICS AND PERTINENT DATA	ADDRESS
	FEDERAL	NON- FEDERAL	GROSS		
Wilson's Creek National Battlefield, Mo.	1,727.53	22.38	1,749.91	The Civil War battle on Aug. 10, 1861, for control of Missouri was fought here. Authorized, Apr. 22, 1960; changed from a national battlefield park, Dec. 16, 1970.	P.O. Box 75, Route 2, Republic, MO 65738.
Wright Brothers National Memorial, N.C.	431.40	431.40	The first sustained flight in a heavier-than-air machine was made here by Wilbur and Orville Wright on Dec. 17, 1903. Authorized as Kill Devil Hill Monument National Memorial, Mar. 2, 1927; transferred from War Department, Aug. 10, 1933; changed to Wright Brothers National Memorial, Dec. 1, 1953. Boundary change: June 23, 1959.	C/o Cape Hatteras National Seashore, P.O. Box 457, Manteo, NC 27954.
Wupatki National Monument, Ariz.	35,253.24	35,253.24	Ruins of red sandstone pueblos built by farming Indians about A.D. 1065 are preserved here. The modern Hopi Indians are believed to be partly descended from these people. Proclaimed, Dec. 9, 1924. Boundary changes: July 9, 1937; Jan. 22, 1941; Aug. 10, 1961.	Tuba Star Route, Flagstaff, AZ 86001.
Yucca House National Monument, Colo.	10.00	10.00	Ruins of these large prehistoric Indian pueblos are as yet unexcavated. <i>Not open to the public.</i> Proclaimed, Dec. 19, 1919.	C/o Mesa Verde National Park, Mesa Verde National Park, CO 81330.

92

93



recreational areas

Units of the National Park System in the recreational area category have been set aside primarily to provide opportunities for outdoor recreation. Although natural and historical features worthy of careful preservation are often found within these units, recreational areas are subject to more intensive public use development than those in the natural or historical categories.

Originally **national recreation areas** in the Park System were units surrounding reservoirs impounded by dams built by other Federal agencies. The National Park Service manages many of these areas under cooperative agreements. The concept of recreational areas has grown to encompass other lands and waters set aside for recreational use by acts of Congress and is no longer restricted to dam impoundments.

There are also national recreation areas outside the National Park System administered by the Forest Service and the U.S. Army Corps of Engineers.

National scenic riverways and **national rivers** preserve ribbons of land bordering on free-flowing streams which



have not been dammed, channelized, or otherwise altered by man. Besides preserving rivers in their natural state, these areas provide opportunities for outdoor activities such as hiking, canoeing, and hunting.

96

Two areas of the National Park System have been set aside primarily as sites for the **performing arts**. These are Wolf Trap Farm Park for the Performing Arts, Va., America's first such national park, and the John F. Kennedy Center for the Performing Arts, D. C. Two historical areas, Ford's Theatre National Historic Site, D. C., and Chamizal National Memorial, Tex., also provide facilities for the performing arts.

Preserving shoreline areas and off-shore islands, the **national lakeshores** and **national seashores** focus on the preservation of natural values while at the same time providing water-oriented recreation. Although national lakeshores can be established on any natural freshwater lake, the existing four are all located on the Great Lakes. The national seashores are on the Atlantic, Gulf, and Pacific coasts.

National parkways encompass ribbons of land flanking

roadways and offer an opportunity for leisurely driving through areas of scenic interest. They are not designed for high speed point-to-point travel. Besides the areas set aside as parkways, other units of the National Park System include parkways within their boundaries.

97

	number	acreage
national lakeshores	4	190,365.53
national memorials	1	17.50
national parkways	4	168,427.54
national recreation areas	16	3,495,625.25
national rivers	1	94,146.00
national seashores	10	604,726.71
national scenic riverways	3	150,479.61
national scenic trails	1	50,000.00
parks (other)	5	27,302.78
total	45	4,781,090.92

Recreational Areas

98

NAME AND LOCATION	ACREAGE			OUTSTANDING CHARACTERISTICS AND PERTINENT DATA	ADDRESS
	FEDERAL	NON- FEDERAL	GROSS		
Amistad National Recreation Area, Tex.	57,292.44	5,159.30	62,451.74	Boating and watersports highlight activities in the U.S. section of Amistad Reservoir on the Rio Grande. Administered under cooperative agreement with United States Section, International Boundary and Water Commission, United States and Mexico, Nov. 11, 1965.	P.O. Box 1463, Del Rio, TX 78840.
Apostle Islands National Lakeshore, Wis.	9,542.76	32,469.06	42,011.82	Twenty picturesque islands and an 11-mile strip of adjacent Bayfield Peninsula along south shore of Lake Superior comprise this northern park. Established, Sept. 26, 1970.	1972 Centennial Dr., R.R. Bayfield, WI 54814.
Appalachian National Scenic Trail, Maine-N.H.-Vt.-Mass.-Conn.-N.Y.-N.J.-Pa.-Md.-W. Va.-Va.-Tenn.-N.C.-Ga.	17,000.00	33,000.00	50,000.00	Approximately 2,000 miles of this scenic trail follow the Appalachian Mountains from Mount Katahdin, Maine, to Springer Mountain, Ga. The trail is one of the two initial units of the National Trail System. Federal acreage by State unavailable. Established, Oct. 2, 1968.	<i>Northern unit:</i> C/o Regional Office, NPS, 143 South 3d St., Philadelphia, PA 19106. <i>Southern unit:</i> C/o Regional Office, NPS, 3401 Whipple Ave., Atlanta, GA 30344.

99

Arbuckle National Recreation Area, Okla.	5,640.20	5,640.20	The manmade Lake of the Arbuckles provides water recreation for an extensive Midwest area. Administered under cooperative agreement with Bureau of Reclamation, U.S. Department of the Interior, Feb. 1, 1965.	P.O. Box 201, Sulphur, OK 73086.
Assateague Island National Seashore, Md.-Va.	15,473.13	24,157.79	39,630.92	This 37-mile barrier island, with sandy beach, migratory waterfowl, and wild ponies, includes 9,021-acre Chincoteague National Wildlife Refuge, administered by the Fish and Wildlife Service, Department of the Interior. Land acreage: 10,057 in Md.; 9,039 in Va. Authorized Sept. 21, 1965.	Route 2, Box 294, Berlin, MD 21811.
Bighorn Canyon National Recreation Area, Mont.-Wyo.	62,854.20	77,605.00	140,459.20	Bighorn Lake, formed by Yellowtail Dam on the Bighorn River, extends 71 miles, including 47 miles through spectacular Bighorn Canyon. The Crow Indian Reservation borders a large part of the area. Federal acreage: 34,231.20 in Mont.; 28,623.00 in Wyo. Administered under cooperative agreement with Bureau of Reclamation, U.S. Department of the Interior, Dec. 31, 1964; established by Act of Congress, Oct. 15, 1966.	P.O. Box 458, Fort Smith, MT 59035.

Recreational Areas

100

NAME AND LOCATION	ACREAGE			OUTSTANDING CHARACTERISTICS AND PERTINENT DATA	ADDRESS
	FEDERAL	NON-FEDERAL	GROSS		
Blue Ridge Parkway, N.C.- Va.-Ga.	63,738.22	27,022.76	90,760.98	Following the crest of the Blue Ridge Mountains, this scenic parkway averages 3,000 feet above sea level, embracing several large recreational areas and preserving mountain folk culture. Construction of 469 miles of the planned 659-mile parkway are completed. The southern portion is not yet under construction. Federal acreage: 25,101.41 in N.C.; 38,636.81 in Va. First national parkway. Initial construction funds allocated under authority of National Industrial Recovery Act, June 16, 1933; act establishing parkway under National Park Service, June 30, 1936. Boundary changes: June 30, 1961; Oct. 9, 1968.	P.O. Box 7606, Asheville, NC 28807.
Buffalo National River, Ark.	26,653.65	67,492.35	94,146.00	Offering both swift-running and placid stretches, the Buffalo is one of the few remaining unpolluted, free-flowing rivers in the lower 48 States. It courses through multicolored bluffs and past numerous caves and springs along its 132-mile length. Authorized, Mar. 1, 1972.	P.O. Box 1173, Harrison, AR 72601.

101

Canaveral National Seashore, Fla.	51,412.00	16,088.00	67,500.00	Immediately north of the famed Kennedy Space Center, the seashore offers a great variety of wildlife, including many species of birds, on a segment of largely undeveloped wild lands. The area includes a portion of 140,393-acre Merritt Island National Wildlife Refuge, administered by Fish and Wildlife Service, U.S. Department of the Interior. <i>No Federal facilities.</i> Established, Jan. 3, 1975.	C/o Southeast Regional Office, 3401 Whipple Ave., Atlanta, GA 30344.
Cape Cod National Seashore, Mass.	24,477.85	20,122.15	44,600.00	Ocean beaches, dunes, woodlands, freshwater ponds, and marshes make up this park on outer Cape Cod. The area preserves notable examples of Cape Cod homes, an architectural style founded in America. Authorized, Aug. 7, 1961.	South Wellfleet, MA 02663.
Cape Hatteras National Seashore, N.C.	30,325.69	.55	30,326.24	Beaches, migratory waterfowl, fishing, and points of historical interest, including the Cape Hatteras Lighthouse overlooking the "graveyard of the Atlantic," are special features of the first national seashore. Authorized, Aug. 17, 1937. Its lands include 5,915-acre Pea Island National Wildlife Refuge, administered by the Fish and Wildlife Service, U.S. Department of the Interior.	P.O. Box 457, Manteo, NC 27954.
Cape Lookout National Seashore, N.C.	24,500.00	24,500.00	This series of barrier islands of the lower Outer Banks embraces beaches, dunes, salt marshes, and Cape Lookout Lighthouse. <i>No Federal facilities.</i> Authorized, Mar. 10, 1966.	P.O. Box 690, Beaufort, NC 28516.

Recreational Areas

102

NAME AND LOCATION	ACREAGE			OUTSTANDING CHARACTERISTICS AND PERTINENT DATA	ADDRESS
	FEDERAL	NON-FEDERAL	GROSS		
Catoctin Mountain Park, Md.	5,768.90	5,768.90	Part of the forested ridge that forms the eastern rampart of the Appalachian Mountains in Maryland, this mountain park has sparkling streams and panoramic vistas of the Monocacy Valley. Catoctin Recreation Demonstration Area transferred from Re-settlement Administration, Nov. 14, 1936; changed to Catoctin Mountain Park, July 12, 1954. Boundary change: July 12, 1954.	Thurmont, MD 21788.
Coulee Dam National Recreation Area, Wash.	100,059.00	100,059.00	Formed by Grand Coulee Dam (part of the Columbia River Basin project), 150-mile long Franklin D. Roosevelt Lake is the principal recreation feature here. Administered under cooperative agreement with Bureau of Reclamation and Bureau of Indian Affairs, U.S. Department of the Interior, Dec. 18, 1946.	P.O. Box 37, Coulee Dam, WA 99116.
Cumberland Island National Seashore, Ga.	15,103.41	21,773.10	36,876.51	Magnificent beaches and dunes, marshes, and fresh-water lakes make up this largest of Georgia's Golden Isles. <i>May open to public in 1977.</i> Established, Oct. 23, 1972.	P.O. Box 960, Kingsland, GA 31548.

103

Curecanti National Recreation Area, Colo.	41,571.66	41,571.66	Blue Mesa Lake, Morrow Point Lake, and Crystal Reservoir are components of the Curecanti unit of the Colorado River Storage project. Administered under cooperative agreement with Bureau of Reclamation, U.S. Department of the Interior, Feb. 11, 1965.	P.O. Box 1040, Gunnison, CO 81230.
Cuyahoga Valley National Recreation Area, Ohio.	29,112.19	This recreation area links the urban centers of Cleveland and Akron, preserving the rural character of the Cuyahoga River valley, and such historic resources as the century-old Ohio Canal system. <i>No Federal facilities.</i> Authorized, Dec. 27, 1974.	C/o Midwest Regional Office, 1709 Jackson St., Omaha, NB 68102.
Delaware Water Gap National Recreation Area, N.J.-Pa.	23,049.62	35,936.84	58,986.46	This scenic area preserves relatively unspoiled land on both the New Jersey and Pennsylvania sides of the Delaware River. Federal acreage: 16,261.66 in N.J.; 6,787.96 in Pa. Authorized, Sept. 1, 1965.	Int. 80, Columbia, NJ 07832.
Fire Island National Seashore, N.Y.	5,930.17	13,380.83	19,311.00	This barrier island off the south shore of Long Island possesses opportunities for beach-oriented recreation and ecological observations. Authorized, Sept. 11, 1964. Boundary change: Oct. 9, 1965.	Box 229, Patchogue, NY 11772.
Gateway National Recreation Area, N.Y.-N.J.	3,716.00	22,456.00	26,172.00	With beaches, marshes, islands, and adjacent waters in the New York harbor area, this is one of the first two major urban parks in the National Park System. Federal acreage: 1,713.00 in N.J.; 2,003.00 in N.Y. Established, Oct. 27, 1972.	Floyd Bennett Field, Bldg. 69, Brooklyn, NY 11234.

Recreational Areas

104

NAME AND LOCATION	ACREAGE			OUTSTANDING CHARACTERISTICS AND PERTINENT DATA	ADDRESS
	FEDERAL	NON-FEDERAL	GROSS		
George Washington Memorial Parkway, Va.-Md.	6, 024. 62	935. 71	6, 960. 33	This landscaped riverfront parkway links many landmarks in the life of George Washington. It connects Mount Vernon and Great Falls on the Virginia side of the Potomac and Great Falls with Chain Bridge on the Maryland side. The parkway includes natural, historical, and recreational areas. Federal acreage: 2,239.82 in Md.; 3,784.80 in Va. Act providing for acquisition of land, establishment, and development of the parkway, May 29, 1930. Transferred from Office of Public Buildings and Public Roads of the National Capital, Aug. 10, 1933. Boundary changes: May 13, 1947; Oct. 10, 1963.	Turkey Run Park, McLean, Va 22101.
Glen Canyon National Recreation Area, Utah-Ariz.	1, 156, 563. 00	77, 617. 00	1, 234, 180. 00	Lake Powell, formed by the Colorado River, stretches for 186 miles behind one of the highest dams in the world. Federal acreage: 94,825.00 in Ariz.; 1,061,738.00 in Utah. Administered under cooperative agreements with Bureau of Reclamation, U.S. Department of the Interior. Apr. 18, 1958, and Sept. 17, 1965. Established, Oct. 27, 1972. Boundary change: Jan. 3, 1975.	P.O. Box 1507, Page, AZ 86040.
Golden Gate National Recreation Area, Calif.	13, 603. 91	20, 323. 78	33, 927. 69	At the doorstep of urban millions, this new area offers ocean beaches, redwood forests, trips to Alcatraz, coastal scenery, lagoons, marshes, and other recreational opportunities and historical settings. Established, Oct. 27, 1972. Boundary change: Dec. 26, 1974.	Fort Mason, San Francisco, CA 94123.
Greenbelt Park, Md.	1, 077. 68	1, 077. 68	Just 12 miles from Washington, D.C., this woodland park offers urban dwellers access to many forms of outdoor recreation. Transferred from Public Housing Authority in 1933.	6501 Greenbelt Rd., Greenbelt, MD 20770.
Gulf Islands National Seashore, Fla.-Miss.	75, 805. 99	66, 256. 50	142, 062. 49	This series of offshore islands and keys has both historic forts and sparkling white sand beaches near Pensacola, Fla., and Pascagoula and Biloxi, Miss. Federal acreage: 7,805.90 in Fla; 67,999.99 in Miss. Land area, 20,430.00 acres. Authorized, Jan. 8, 1971.	P.O. Box 100 Gulf Breeze, FL 32561. P.O. Box T, Ocean Springs, MI 39564.
Indiana Dunes National Lakeshore, Ind.	3, 630. 80	4, 699. 01	8, 329. 81	Sand dunes rise 200 feet above Lake Michigan's southern shore. Separate natural units of beaches, dunes, and inland bogs and prairie have also been preserved. Authorized, Nov. 5, 1966.	R.R. 2, Box 139-A, Chesterton, IN 46304.
John D. Rockefeller, Jr. Memorial Parkway, Wyo.	23, 777. 72	23, 777. 72	Linking Yellowstone and Grand Teton National Parks this scenic 82-mile corridor commemorates Rockefeller's role in aiding establishment of many parks, including Grand Teton. Authorized, Aug. 25, 1972.	C/o Grand Teton National Park, P.O. Box 67, Moose, WY 83012.

105

Recreational Areas

106

NAME AND LOCATION	ACREAGE			OUTSTANDING CHARACTERISTICS AND PERTINENT DATA	ADDRESS
	FEDERAL	NON-FEDERAL	GROSS		
John F. Kennedy Center for the Performing Arts, D.C.	17.50	17.50	Cultural events are presented in this structure designed by Edward Durell Stone. The building contains the Eisenhower Theater, a concert hall, and an opera house. Authorized as National Cultural Center, Sept. 2, 1958; name changed, Jan. 23, 1964; nonperforming arts functions transferred from Smithsonian Institution to National Park Service, June 16, 1972.	C/o National Capital Parks, Kennedy Center, Wash., DC 20566.
Lake Chelan National Recreation Area, Wash.	61,055.86	944.14	62,000.00	Here the beautiful Stehekin Valley, with a portion of fjord-like Lake Chelan, adjoins the southern unit of North Cascades National Park. Established, Oct. 2, 1968.	NPS Stehekin District, P.O. Box 549, Chelan, WA 98816.

107

Lake Mead National Recreation Area, Ariz.-Nev.	1,466,531.28	19,608.59	1,486,139.87	Lake Mead, formed by Hoover Dam, and Lake Mohave, by Davis Dam, on the Colorado River comprise this first national recreation area established by an act of Congress. Federal acreage: 797,351.41 in Ariz., 669,179.87 in Nev. Administered under cooperative agreements with Bureau of Reclamation, U.S. Department of the Interior, Oct. 13, 1936, and July 18, 1947. Name changed from Boulder Dam National Recreational Area, Aug. 11, 1947. Established, Oct. 8, 1964. Boundary change: Jan. 3, 1975.	601 Nevada Highway, Boulder City, NV 89005.
Lake Meredith National Recreation Area, Tex.	45,964.30	45,964.30	Manmade Lake Meredith on the Canadian River is a popular water-activity center in the Southwest. Administered under cooperative agreement with Bureau of Reclamation, U.S. Department of the Interior, Mar. 15, 1965. Name changed from Sanford National Recreation Area, Oct. 16, 1972.	P.O. Box 1438, Fritch, TX 79036.
Lower St. Croix National Scenic River, Minn.-Wis.	7,845.00	7,845.00	Recreational opportunities for much of the upper Midwest are provided here along this 27-mile segment of the St. Croix River, a component of the Wild and Scenic Rivers System. <i>No Federal recreational facilities.</i> Authorized, Oct. 25, 1972.	C/o St. Croix National Scenic Riverway, P.O. Box 579, St. Croix Falls, WI 54024.

Recreational Areas

108

NAME AND LOCATION	ACREAGE			OUTSTANDING CHARACTERISTICS AND PERTINENT DATA	ADDRESS
	FEDERAL	NON-FEDERAL	GROSS		
Natchez Trace Parkway, Miss.-Tenn.-Ala.	46,252.07	676.44	46,928.51	This historic route generally follows the old Indian trace, or trail, between Nashville, Tenn., and Natchez, Miss. (317 miles of the estimated 443 miles are completed.) Federal acreage: 35,046.24 in Miss.; 6,973.56 in Tenn.; 4,232.27 in Ala. Emergency Appropriation Act of June 19, 1934, allocated initial construction funds; act establishing parkway under National Park Service, May 18, 1938. Ackia Battleground (authorized as a national monument Aug. 27, 1935, and now called Chickasaw Village) and Meriwether Lewis (proclaimed as a national monument Feb. 6, 1925, and transferred from War Department Aug. 10, 1933) were disestablished and added to the Natchez Trace Parkway by act of Aug. 10, 1961.	R.R. 1, NT-143, Tupelo, MS 38801.
Ozark National Scenic Riverways, Mo.	59,426.79	20,480.21	79,907.00	For about 140 miles the Current and Jacks Fork Rivers flow through a quiet world of nature. Notable features include huge freshwater springs and numerous caves. Authorized, Aug. 27, 1964. Boundary change: Apr. 11, 1972.	P.O. Box 448, Van Buren, MO 63965.
Padre Island National Seashore, Tex.	132,202.87	1,715.85	133,918.72	Noted for its wide sand beaches, excellent fishing, and abundant bird and marine life, this barrier island stretches along the Gulf Coast for 67.5 miles. Authorized, Sept. 28, 1962. Established, Apr. 6, 1968.	10235 S. Padre Island Dr., Corpus Christi, TX 78418.

Pictured Rocks National Lakeshore, Mich.	22,934.14	45,984.76	68,918.90	Multicolored sandstone cliffs, broad beaches, sand bars, dunes, waterfalls, inland lakes, ponds, marshes, hardwood and coniferous forests, and numerous birds and animals comprise this scenic area on Lake Superior. This was the first national lakeshore. Land area: 65,544 acres. Authorized, Oct. 15, 1966.	P.O. Box 40, Munising, MI 49862.
Point Reyes National Seashore, Calif.	60,373.60	5,627.23	66,000.83	This peninsula near San Francisco is noted for its long beaches backed by tall cliffs; lagoons and esteros; forested ridges, and offshore bird and sea lion colonies. Part of the area remains a private pastoral zone. Authorized, Sept. 13, 1962. Established Oct. 20, 1972. Boundary change: Dec. 26, 1974.	Point Reyes, CA 94956
Prince William Forest Park, Va.	17,347.57	1,223.98	18,571.55	In this forested watershed of Quantico Creek, pines and hardwoods have replaced worn-out farmland. Chopawamsic Recreation Demonstration Area transferred from Resettlement Administration, Nov. 14, 1936; changed to Prince William Forest Park, June 22, 1948.	P.O. Box 208, Triangle, VA 22172.
Rock Creek Park, D.C.	1,754.37	1,754.37	One of the largest urban parks in the world, this wooded preserve contains a wide range of natural, historical, and recreational resources in the midst of metropolitan Washington, D.C. Authorized, Sept. 20, 1890; transferred to National Park Service June 10, 1933.	C/o National Capital Parks, 1100 Ohio Dr. SW., Wash- ington, DC 20242.

109

Recreational Areas

NAME AND LOCATION	ACREAGE			OUTSTANDING CHARACTERISTICS AND PERTINENT DATA	ADDRESS
	FEDERAL	NON-FEDERAL	GROSS		
Ross Lake National Recreation Area, Wash.	105,573.11	1,813.55	106,386.66	Ringed by mountains, this reservoir in the Skagit River Canyon separates the north and south units of North Cascades National Park. Established, Oct. 2, 1968.	NPS Skagit District, Marblemount Ranger Station, Marblemount, WA 98267.
St. Croix National Scenic Riverway, Wis.-Minn.	11,973.79	50,753.82	62,727.61	About 200 miles of the beautiful St. Croix River and its Namekagon tributary make up this area, an initial component of the National Wild and Scenic Rivers System. Federal acreage: 314.89 in Minn.; 11,658.90 in Wis. <i>Limited Federal facilities.</i> Authorized, Oct. 2, 1968; placed under National Park Service, Sept. 4, 1969.	P.O. Box 579, St. Croix Falls, WI 54024.
Shadow Mountain National Recreation Area, Colo.	16,303.58	2,700.00	19,003.58	Shadow Mountain Lake, Lake Granby, and Willow Creek Reservoir, three units of the Colorado-Big Thompson project, are included in this recreational spot adjacent to the west entrance of Rocky Mountain National Park. Administered under cooperative agreements with Bureau of Reclamation, U.S. Department of the Interior, June 27, 1952; Aug. 3, 1955; Feb. 16, 1973.	P.O. Box 100, Grand Lake, CO 80447.
Sleeping Bear Dunes National Lakeshore, Mich.	9,879.93	61,225.07	71,105.00	Beaches, massive sand dunes, forests, and lakes are outstanding characteristics of these two offshore islands and a section of Lake Michigan shoreline. Authorized, Oct. 21, 1970.	400 1/2 Main St., Frankfort, MI 49635.
Whiskeytown-Shasta-Trinity National Recreation Area, Calif.	42,422.38	148.32	42,570.70	Whiskeytown Lake, formed by a dam on Clear Creek, is an excellent resource for water-related recreation. The area's other two units are administered by the Forest Service, U.S. Department of Agriculture. Administered under cooperative agreement with Bureau of Reclamation, U.S. Department of the Interior, May 31, 1962; authorized by act of Congress, Nov. 8, 1965.	P.O. Box 188, Whiskeytown, CA 96095.
Wolf Trap Farm Park for the Performing Arts, Va.	130.28	130.28	Here at this first national park for the performing arts, Filene Center can accommodate an audience of 6,500, including 3,000 on the sloping lawn in a setting of rolling hills and woods. The stagehouse is 10 stories high and the stage 100 feet wide by 64 feet deep. Authorized, Oct. 15, 1966.	P.O. Box 466, Vienna, VA 22180.

110

111



national capital parks

As the Nation's Capital, Washington has a unique park system. Most of the public parks (which in other communities are maintained by a municipal park agency) are administered by the Federal Government through National Capital Parks (NCP), a regional unit of the National Park Service.

National Capital Parks has inherited duties originally assigned to three Federal Commissioners appointed by President Washington in 1790. The city's parks were administered by a variety of Federal agencies until this responsibility was assigned to the National Park Service under the Reorganization Act of 1933. Most parklands in the city are included in the Federal holdings, although the District of Columbia also operates parks, playgrounds, and recreational facilities.

National Capital Parks also administers National Park System units in Maryland, Virginia, and West Virginia. Under the categories of Historical and Recreational Areas in this booklet, the following units administered by NCP are described individually:



Historical—

Antietam National Battlefield Site, Md.
 Arlington House, the Robert E. Lee Memorial, Va.
 Chesapeake and Ohio Canal National
 Historical Park, D.C.-Md.-W. Va.
 Clara Barton National Historic Site, Md.
 Ford's Theatre National Historic Site, D.C.
 Fort Washington Park, Md.
 Frederick Douglass Home, D.C.
 Harpers Ferry National Historical Park, Md.-W. Va.
 Lincoln Memorial, D.C.*
 Lyndon Baines Johnson Memorial Grove
 on the Potomac, D.C.*
 Manassas National Battlefield Park, Va.
 National Mall, D.C.
 National Visitor Center, D.C.
 Piscataway Park, Md.
 Sewall-Belmont House National Historic Site, D.C.
 Theodore Roosevelt Island, D.C.*
 Thomas Jefferson Memorial, D.C.*
 Washington Monument, D.C.*
 White House, D.C.

114

Recreational—

Catoctin Mountain Park, Md.
 George Washington Memorial Parkway, Md.-Va.
 Greenbelt Park, Md.
 John F. Kennedy Center for the Performing Arts, D.C.*
 Prince William Forest Park, Va.
 Rock Creek Park, D.C.
 Wolf Trap Farm Park for the Performing Arts, Va.

115

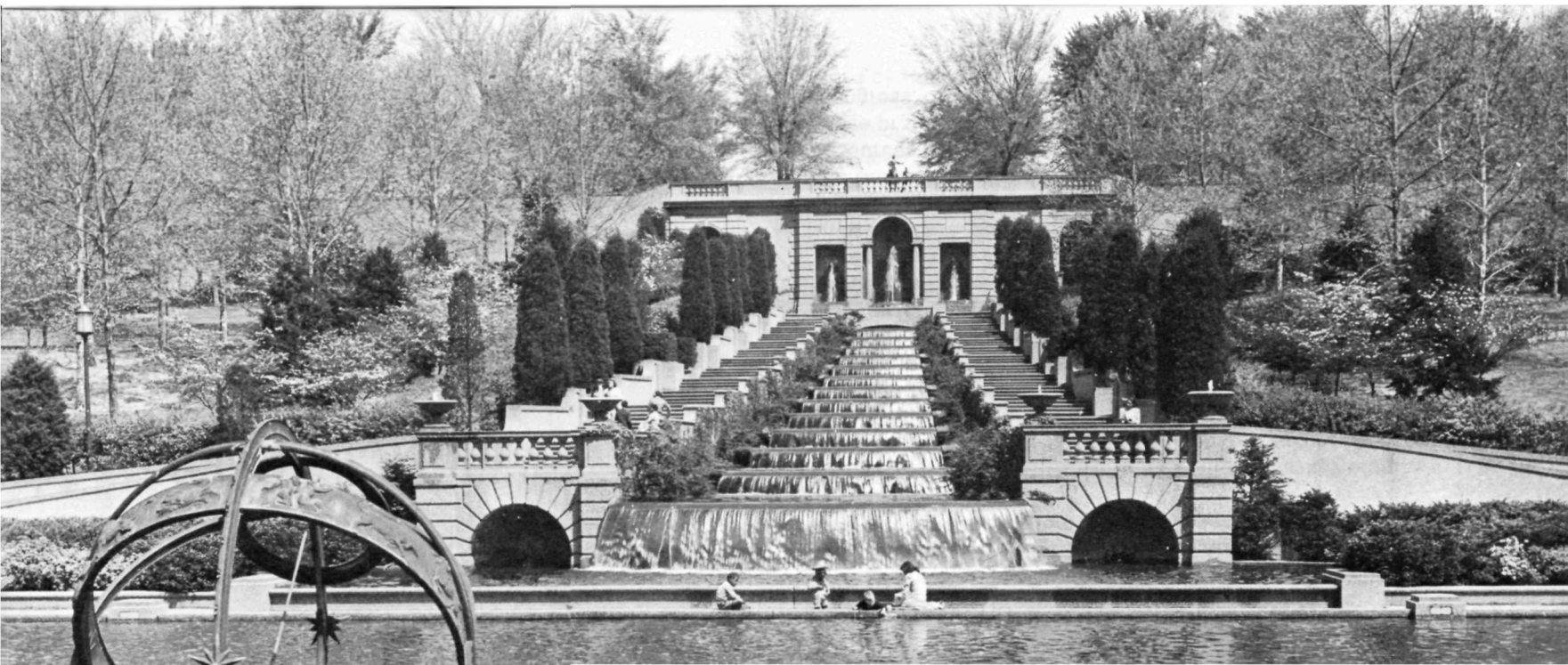
* Classified as national memorial.

The acreage figure for National Capital Parks in the following table is in addition to the areas listed above in the historical and recreational sections. This NCP acreage represents parks, parkways, and reservations in the Washington metropolitan area. Included are such properties as the Battleground National Cemetery, the President's Parks (Lafayette Park north of the White House and the Ellipse south of the White House), the parks flanking the Great Falls of the Potomac, a variety of military fortifications, and green areas.

National Capital Parks

116

NAME AND LOCATION	ACREAGE			OUTSTANDING CHARACTERISTICS AND PERTINENT DATA	ADDRESS
	FEDERAL	NON- FEDERAL	GROSS		
National Capital Parks, D.C.-Md.-Va.	7,495.49	7,495.49	<p>Park system of the Nation's Capital comprises 367 reservations: 349 in D.C.; 10 in Md.; 7 in Va.; 1 in W. Va.</p> <p>When Congress established a permanent National Capital in 1790, the city's Federal Commissioners were given the power "to purchase or accept such quantity of land as the President shall deem proper for the use of the United States." Under this authority the Commissioners purchased Washington's first 17 public reservations and accepted donations of other lands required for the street system of L'Enfant's plan. Today some 301 park units derive from these lands. Office of Public Buildings and Public Parks of the National Capital was abolished and public reservations were transferred to National Capital Parks, National Park Service, Aug. 10, 1933.</p>	1100 Ohio Dr. SW., Washington, DC 20240.



affiliated areas

Because they preserve important segments of the Nation's heritage, yet are not officially recognized as units of the National Park System itself, 15 areas that are affiliated with the system are given special recognition in this section.

118

In an act of August 18, 1970, the National Park System was defined in law as "any area of land and water now or hereafter administered by the Secretary of the Interior through the National Park Service for park, monument, historic, parkway, recreational or other purposes." The same law specifically excludes "miscellaneous areas administered in connection therewith," that is, those properties that are neither Federally owned nor directly administered by the National Park Service but which utilize NPS resources.

The Affiliated Areas comprise a variety of properties in the United States and Canada that preserve significant resources outside the National Park System. Some of these properties have been recognized by acts of Congress, others have been designated national historic

sites by the Secretary of the Interior under authority of the Historic Sites Act of 1935. These areas draw on technical or financial assistance from the National Park Service.

119

NAME AND LOCATION	ACREAGE			OUTSTANDING CHARACTERISTICS AND PERTINENT DATA	ADDRESS
	FEDERAL	NON-FEDERAL	GROSS		
Benjamin Franklin National Memorial, Pa.01	.01	In the Rotunda of the Franklin Institute the colossal seated statue of Franklin, by James Earle Fraser, honors the inventor-statesman. Designated, Oct. 25, 1972. Owned and administered by the Institute.	The Franklin Institute, 20th and Benjamin Franklin Parkway, Philadelphia, PA 19103.
Chicago Portage National Historic Site, Ill.	91.20	91.20	A portion of the portage discovered by French Explorers Jacques Marquette and Louis Joliet is preserved here. Used by pioneers as a link between the Great Lakes and the Mississippi, the portage was one of the economic foundations of Chicago. Designated, Jan. 3, 1952.	C/o Cook County Forest Preserve, Cummings Square, River Forest, IL 60305.
Chimney Rock National Historic Site, Nebr.	83.36	83.36	As they traveled west, pioneers camped near this famous landmark, which stands 500 feet above the Platte River along the Oregon Trail. Designated, Aug. 2, 1956. Owned by Nebraska; administered by the city of Bayard, the Nebraska State Historical Society, and the National Park Service under a cooperative agreement of June 21, 1956.	C/o Scotts Bluff National Monument, P.O. Box 427, Gering, NB 69341.

Dorchester Heights National Historic Site, Mass.	5.43	5.43	A memorial tower and a green mark the site of the colonial batteries which threatened the British in Boston and helped to force them to evacuate the city on Mar. 17, 1776. Designated, Apr. 27, 1951. Owned and administered by the city of Boston.	C/o Parks and Recreation Dept., 33 Beacon St., Boston, MA 02108.
Fort Scott Historic Area, Kans.	6.69	6.69	The fort commemorates historic events in Kansas prior to and during the Civil War. Authorized, Aug. 31, 1965. The Secretary of the Interior is authorized to give planning and financial assistance to the city of Fort Scott and to provide markers for other historic areas in Kansas.	C/o Fort Scott Chamber of Commerce, Fort Scott, KA 66701.
Gloria Dei (Old Swedes') Church National Historic Site, Pa.	2.08	1.65	3.73	This the second oldest Swedish church in the United States was founded in 1677. The present structure, a splendid example of early Swedish church architecture, was erected about 1700. Designated, Nov. 17, 1942. Church site owned and administered by Corporation of Gloria Dei (Old Swedes') Church. Boundary change: Aug. 21, 1958.	Delaware Ave. and Christian St., Philadelphia PA 19106.
Ice Age National Scientific Reserve, Wis.	32,500.00	32,500.00	This first national scientific reserve contains nationally significant features of continental glaciation. State parks in area are open to public. Authorized, Oct. 13, 1964.	C/o Chicago Field Office, 2510 Dempster St., Room 214, Des Plaines, IL 60016.

NAME AND LOCATION	ACREAGE			OUTSTANDING CHARACTERISTICS AND PERTINENT DATA	ADDRESS
	FEDERAL	NON- FEDERAL	GROSS		
International Peace Garden, N. Dak.	2, 330. 3	2, 330. 3	Peaceful relations between Canada and the United States are commemorated here. N. Dak. holds the 888-acre U.S. portion for International Peace Garden, Inc., which administers the area for N. Dak. and Manitoba. The National Park Service has assisted in the master plan. Originated by N. Dak. in 1931; Federal aid authorized in Acts of Oct. 25, 1949; June 28, 1954; Aug. 28, 1958; Oct. 26, 1974.	P.O.Box 419, Dunseith, ND 58637
Jamestown National Historic Site, Va.	20. 63	20. 63	Part of the site of the first permanent English settlement in North America (1607) is on the upper end of Jamestown Island, scene of the first representative legislative government on this continent, July 30, 1619. Designated, Dec. 18, 1940. Owned and administered by Association for the Preservation of Virginia Antiquities. Remainder of Jamestown site and island is part of Colonial National Historical Park.	C/o Association for the Preservation of Virginia Antiquities, John Marshall House, 2705 Park Ave., Richmond, VA 23220.

McLoughlin House National Historic Site, Oreg. 63	. 63	Dr. John McLoughlin, often called the "Father of Oregon," was prominent in the development of the Pacific Northwest as chief factor of Fort Vancouver. He lived in this house from 1847 to 1857. Designated as McLoughlin Home National Historic Site, June 27, 1941; name changed to McLoughlin House National Historic Site, Jan. 16, 1945. Owned and administered by McLoughlin Memorial Association.	Oregon City, OR 97045.
Pennsylvania Avenue National Historic Site, D.C.	This site includes a portion of Pennsylvania Avenue and the area adjacent to it between the Capitol and the White House encompassing Ford's Theatre National Historic Site, several blocks of the Washington commercial district, and a number of Federal structures. Existing park areas are listed separately. Designated, Sept. 30, 1965.	C/o National Capital Park-West, 1100 Ohio Dr. SW., Washington, DC 20242.
Roosevelt Campobello International Park, N.B., Canada	2, 721. 50	2, 721. 50	President Franklin D. Roosevelt was stricken here at his summer home at the age of 39 by poliomyelitis. This is the first international park to be administered by a joint commission. Established, July 7, 1964. Owned and administered by a United States-Canadian Commission.	C/o Executive Secretary, Roosevelt Campobello International Park Comm., P.O. Box 97, Lubec, ME 04652.
Saint Paul's Church National Historic Site, N.Y.	6. 09	6. 09	This 18th-century church is significant because of its connection with events leading to the John Peter Zenger trial involving freedom of the press, and because of its place in American architectural history and the Revolution. Designated July 5, 1943. Owned and administered by the Corporation of Saint Paul's Church.	C/o Corporation of Saint Paul's Church, 897 South Columbus Ave., Mount Vernon, NY 10550.

NAME AND LOCATION	ACREAGE			OUTSTANDING CHARACTERISTICS AND PERTINENT DATA	ADDRESS
	FEDERAL	NON- FEDERAL	GROSS		
San Jose Mission National Historic Site, Tex.	4. 13	4. 13	This is an outstanding example of the frontier missions that stretched across the Southwest in the 18th century. Designated, June 1, 1941. Administered cooperatively by the Texas Parks and Wildlife Department, the Archdiocese of San Antonio, the National Park Service, the San Antonio Conservation Society, and Bexor County.	6539 San Jose Dr., San Antonio, TX 78214.
Touro Synagogue National Historic Site, R.I. 23	. 23	One of the finest examples of colonial religious architecture, this synagogue is the present-day place of worship of Congregation Jeshuat Israel. Designated, Mar. 5, 1946. Owned by Congregation Shearith Israel, New York City. National Park Service lends technical assistance for preservation of the building under a cooperative agreement with the two congregations.	85 Touro St., Newport, RI 02840.





index

Area	Page
Abraham Lincoln Birthplace National Historic Site, Ky.	44
Acadia National Park, Maine	16
Adams National Historic Site, Mass.	44
Agate Fossil Beds National Monument, Nebr.	16
Alibates Flint Quarries and Texas Panhandle Pueblo Culture National Monument, Tex.	44
Allegheny Portage Railroad National Historic Site, Pa.	45
Amistad National Recreation Area, Tex.	98
Andersonville National Historic Site, Ga.	45
Andrew Johnson National Historic Site, Tenn.	45
Antietam National Battlefield Site, Md.	45
Apostle Islands National Lakeshore, Wis.	98
Appalachian National Scenic Trail, Maine-N.H.-Vt.-Mass.- Conn.-N.Y.-N.J.-Pa.-Md.-W. Va.-Va.-Tenn.-N.C.-Ga.	98
Appomattox Court House National Historical Park, Va.	46
Arbuckle National Recreation Area, Okla.	99
Arches National Park, Utah	16
Arkansas Post National Memorial, Ark.	46
Arlington House, The Robert E. Lee Memorial, Va.	46
Assateague Island National Seashore, Md.-Va.	99
Aztec Ruins National Monument, N. Mex.	47
Badlands National Monument, S. Dak.	17
Bandelier National Monument, N. Mex.	47

Area	Page
Benjamin Franklin National Memorial, Pa.	120
Bent's Old Fort National Historic Site, Colo.	47
Big Bend National Park, Tex.	17
Big Cypress National Preserve, Fla.	17
Big Hole National Battlefield, Mont.	47
Big Thicket National Preserve, Tex.	17
Bighorn Canyon National Recreation Area, Mont.-Wyo.	99
Biscayne National Monument, Fla.	17
Black Canyon of the Gunnison National Monument, Colo.	18
Blue Ridge Parkway, N.C.-Va.-Ga.	100
Booker T. Washington National Monument, Va.	47
Boston National Historical Park, Mass.	48
Brices Cross Roads National Battlefield Site, Miss.	48
Bryce Canyon National Park, Utah	18
Buck Island Reef National Monument, V.I.	19
Buffalo National River, Ark.	100
Cabrillo National Monument, Calif.	48
Canaveral National Seashore, Fla.	101
Canyon de Chelly National Monument, Ariz.	49
Canyonlands National Park, Utah	19
Cape Cod National Seashore, Mass.	101
Cape Hatteras National Seashore, N.C.	101

Cape Lookout National Seashore, N.C.	101
Capitol Reef National Park, Utah	19
Capulin Mountain National Monument, N. Mex.	19
Carl Sandburg Home National Historic Site, N.C.	49
Carlsbad Caverns National Park, N. Mex.	19
Casa Grande National Monument, Ariz.	49
Castillo de San Marcos National Monument, Fla.	49
Castle Clinton National Monument, N.Y.	50
Catoctin Mountain Park, Md.	102
Cedar Breaks National Monument, Utah	20
Chaco Canyon National Monument, N. Mex.	50
Chalmette National Historic Park, La.	50
Chamizal National Memorial, Tex.	51
Channel Islands National Monument, Calif.	20
Chesapeake and Ohio Canal National Historical Park, Md.-D.C.-W. Va.	51
Chicago Portage National Historic Site, Ill.	120
Chickamauga and Chattanooga National Military Park, Ga.-Tenn.	51
Chimney Rock National Historic Site, Nebr.	120
Chiricahua National Monument, Ariz.	20
Christiansted National Historic Site, V.I.	52
City of Refuge National Historical Park, Hawaii	52
Clara Barton National Historic Site, Md.	52
Colonial National Historical Park, Va.	53

Area	Page
Colorado National Monument, Colo.	20
Coronado National Memorial, Ariz.	53
Coulee Dam National Recreation Area, Wash.	102
Cowpens National Battlefield Site, S.C.	54
Crater Lake National Park, Oreg.	21
Craters of the Moon National Monument, Idaho	21
Cumberland Gap National Historical Park, Ky.-Va.-Tenn.	54
Cumberland Island National Seashore, Ga.	102
Curecanti National Recreation Area, Colo.	103
Custer Battlefield National Monument, Mont.	54
Cuyahoga Valley National Recreation Area, Ohio	103
Death Valley National Monument, Calif.-Nev.	21
Delaware Water Gap National Recreation Area, N.J.-Pa.	103
De Soto National Memorial, Fla.	55
Devils Postpile National Monument, Calif.	21
Devils Tower National Monument, Wyo.	22
Dinosaur National Monument, Colo.-Utah	22
Dorchester Heights National Historic Site, Mass.	121
Edison National Historic Site, N.J.	55
Effigy Mounds National Monument, Iowa	55
Eisenhower National Historic Site, Pa.	56

El Morro National Monument, N. Mex.	56
Everglades National Park, Fla.	22
Federal Hall National Memorial, N.Y.	57
Fire Island National Seashore, N.Y.	103
Florissant Fossil Beds National Monument, Colo.	23
Ford's Theatre National Historic Site, D.C.	57
Fort Bowie National Historic Site, Ariz.	57
Fort Caroline National Memorial, Fla.	58
Fort Clatsop National Memorial, Oreg.	58
Fort Davis National Historic Site, Tex.	58
Fort Donelson National Military Park, Tenn.	59
Fort Frederica National Monument, Ga.	59
Fort Jefferson National Monument, Fla.	59
Fort Laramie National Historic Site, Wyo.	59
Fort Larned National Historic Site, Kans.	60
Fort McHenry National Monument and Historic Shrine, Md.	60
Fort Matanzas National Monument, Fla.	60
Fort Mifflin National Battlefield, Pa.	61
Fort Point National Historic Site, Calif.	61
Fort Pulaski National Monument, Ga.	61
Fort Raleigh National Historic Site, N.C.	61
Fort Scott Historic Area, Kans.	121
Fort Smith National Historic Site, Ark.	61
Fort Stanwix National Monument, N.Y.	62

Area	Page
Fort Sumter National Monument, S.C.	62
Fort Union National Monument, N. Mex.	62
Fort Union Trading Post National Historic Site, N. Dak.-Mont.	63
Fort Vancouver National Historic Site, Wash.	63
Fort Washington Park, Md.	63
Fossil Butte National Monument, Wyo.	23
Frederick Douglass Home, D.C.	63
Fredericksburg and Spotsylvania County Battlefields Memorial National Military Park, Va.	64
Gateway National Recreation Area, N.Y.-N.J.	103
General Grant National Memorial, N.Y.	64
George Rogers Clark National Historical Park, Ind.	65
George Washington Birthplace National Monument, Va.	65
George Washington Carver National Monument, Mo.	65
George Washington Memorial Parkway, Va.-Md.	104
Gettysburg National Military Park, Pa.	65
Gila Cliff Dwellings National Monument, N. Mex.	66
Glacier Bay National Monument, Alaska	23
Glacier National Park, Mont.	23
Glen Canyon National Recreation Area, Utah-Ariz.	104
Gloria Dei (Old Swedes') Church National Historic Site, Pa.	121
Golden Gate National Recreation Area, Calif.	105
Golden Spike National Historic Site, Utah	66
Gran Quivira National Monument, N. Mex.	66
Grand Canyon National Park, Ariz.	24
Grand Portage National Monument, Minn.	67
Grand Teton National Park, Wyo.	25
Grant-Kohrs Ranch National Historic Site, Mont.	67
Great Sand Dunes National Monument, Colo.	25
Great Smoky Mountains National Park, N.C.-Tenn.	25
Greenbelt Park, Md.	105
Guadalupe Mountains National Park, Tex.	26
Guilford Courthouse National Military Park, N.C.	67
Gulf Islands National Seashore, Fla.-Miss.	105
Haleakala National Park, Hawaii	26
Hamilton Grange National Memorial, N.Y.	67
Hampton National Historic Site, Md.	67
Harpers Ferry National Historical Park, Md.-W. Va.	68
Hawaii Volcanoes National Park, Hawaii	26
Herbert Hoover National Historic Site, Iowa	68
Hohokam Pima National Monument, Ariz.	68
Home of Franklin D. Roosevelt National Historic Site, N.Y.	69
Homestead National Monument of America, Nebr.	69
Hopewell Village National Historic Site, Pa.	69
Horseshoe Bend National Military Park, Ala.	69

Area	Page
Hot Springs National Park, Ark.	27
Hovenweep National Monument, Colo.-Utah	70
Hubbell Trading Post National Historic Site, Ariz.	70
Ice Age National Scientific Reserve, Wis.	121
Independence National Historical Park, Pa.	71
Indiana Dunes National Lakeshore, Ind.	105
International Peace Garden, N. Dak.	122
Isle Royale National Park, Mich.	27
Jamestown National Historic Site, Va.	122
Jefferson National Expansion Memorial National Historic Site, Mo.	71
Jewel Cave National Monument, S. Dak.	27
John D. Rockefeller, Jr. Memorial Parkway, Wyo.	105
John Day Fossil Beds National Monument, Ore.	27
John F. Kennedy Center for the Performing Arts, D.C.	106
John Fitzgerald Kennedy National Historic Site, Mass.	71
John Muir National Historic Site, Calif.	72
Johnstown Flood National Memorial, Pa.	72
Joshua Tree National Monument, Calif.	28
Katmai National Monument, Alaska	28
Kennesaw Mountain National Battlefield Park, Ga.	72
Kings Canyon National Park, Calif.	29
Kings Mountain National Military Park, S.C.	72
Knife River Indian Villages National Historic Site, N. Dak.	73
Lake Chelan National Recreation Area, Wash.	106
Lake Mead National Recreation Area, Ariz.-Nev.	107
Lake Meredith National Recreation Area, Tex.	107
Lassen Volcanic National Park, Calif.	29
Lava Beds National Monument, Calif.	29
Lehman Caves National Monument, Nev.	29
Lincoln Boyhood National Memorial, Ind.	73
Lincoln Home National Historic Site, Ill.	73
Lincoln Memorial, D.C.	73
Longfellow National Historic Site, Mass.	74
Lower St. Croix National Scenic River, Minn.-Wis.	107
Lyndon B. Johnson National Historic Site, Tex.	74
Lyndon Baines Johnson Memorial Grove on the Potomac, D.C.	74
McLoughlin House National Historic Site, Oreg.	123
Mammoth Cave National Park, Ky.	30
Manassas National Battlefield Park, Va.	75
Mar-A-Lago National Historic Site, Fla.	75
Martin Van Buren National Historic Site, N.Y.	75

Area	Page
Mesa Verde National Park, Colo.	75
Minute Man National Historical Park, Mass.	75
Montezuma Castle National Monument, Ariz.	76
Moore's Creek National Military Park, N.C.	76
Morristown National Historical Park, N.J.	76
Mound City Group National Monument, Ohio	77
Mount McKinley National Park, Alaska	30
Mount Rainier National Park, Wash.	31
Mount Rushmore National Memorial, S. Dak.	77
Muir Woods National Monument, Calif.	31
Natchez Trace Parkway, Miss.-Tenn.-Ala.	108
National Capital Parks, D.C.-Va.-Md.	116
National Mall, D.C.	77
National Visitor Center, D.C.	77
Natural Bridges National Monument, Utah	31
Navajo National Monument, Ariz.	78
Nez Perce National Historical Park, Idaho	78
North Cascades National Park, Wash.	31
Ocmulgee National Monument, Ga.	78
Olympic National Park, Wash.	32
Oregon Caves National Monument, Oreg.	32

Organ Pipe Cactus National Monument, Ariz.	32
Ozark National Scenic Riverways, Mo.	108
Padre Island National Seashore, Tex.	108
Pea Ridge National Military Park, Ark.	78
Pecos National Monument, N. Mex.	79
Pennsylvania Avenue National Historic Site, D.C.	123
Perry's Victory and International Peace Memorial National Monument, Ohio	79
Petersburg National Battlefield, Va.	79
Petrified Forest National Park, Ariz.	33
Pictured Rocks National Lakeshore, Mich.	109
Pinnacles National Monument, Calif.	33
Pipe Spring National Monument, Ariz.	80
Pipestone National Monument, Minn.	80
Piscataway Park, Md.	80
Platt National Park, Okla.	33
Point Reyes National Seashore, Calif.	109
Prince William Forest Park, Va.	109
Puukohola Heiau National Historic Site, Hawaii	80
Rainbow Bridge National Monument, Utah	33
Redwood National Park, Calif.	33
Richmond National Battlefield Park, Va.	81
Rock Creek Park, D.C.	109

Area	Page
Rocky Mountain National Park, Colo.	34
Roger Williams National Memorial, R.I.	81
Roosevelt Campobello International Park, N.B., Canada	123
Ross Lake National Recreation Area, Wash.	110
Russell Cave National Monument, Ala.	81
Sagamore Hill National Historic Site, N.Y.	81
Saguaro National Monument, Ariz.	34
Saint Croix Island National Monument, Maine	81
St. Croix National Scenic Riverway, Wis.-Minn.	110
Saint-Gaudens National Historic Site, N.H.	81
Saint Paul's Church National Historic Site, N.Y.	123
St. Thomas National Historic Site, V.I.	82
Salem Maritime National Historic Site, Mass.	82
San Jose Mission National Historic Site, Tex.	124
San Juan Island National Historical Park, Wash.	82
San Juan National Historic Site, P.R.	83
Saratoga National Historical Park, N.Y.	83
Saugus Iron Works National Historic Site, Mass.	83
Scotts Bluff National Monument, Nebr.	83
Sequoia National Park, Calif.	35
Sewall-Belmont House National Historic Site, D.C.	84
Shadow Mountain National Recreation Area, Colo.	110

Shenandoah National Park, Va.	35
Shiloh National Military Park, Tenn.	84
Sitka National Historical Park, Alaska	85
Sleeping Bear Dunes National Lakeshore, Mich.	111
Springfield Armory National Historic Site, Mass.	85
Statue of Liberty National Monument, N.Y.-N.J.	85
Stones River National Battlefield, Tenn.	86
Sunset Crater National Monument, Ariz.	35
Thaddeus Kosciuszko National Memorial, Pa.	86
Theodore Roosevelt Birthplace National Historic Site, N.Y.	86
Theodore Roosevelt Inaugural National Historic Site, N.Y.	87
Theodore Roosevelt Island, D.C.	87
Theodore Roosevelt National Memorial Park, N. Dak.	87
Thomas Jefferson Memorial, D.C.	87
Timpanogos Cave National Monument, Utah	35
Tonto National Monument, Ariz.	88
Touro Synagogue National Historic Site, R.I.	124
Tumacacori National Monument, Ariz.	88
Tupelo National Battlefield, Miss.	88
Tuskegee Institute National Historic Site, Ala.	89
Tuzigoot National Monument, Ariz.	89
Vanderbilt Mansion National Historic Site, N.Y.	89
Vicksburg National Military Park, Miss.	89

Area	Page
Virgin Islands National Park, V.I.	36
Voyageurs National Park, Minn.	36
Walnut Canyon National Monument, Ariz.	90
Washington Monument, D.C.	90
Whiskeytown-Shasta-Trinity National Recreation Area, Calif.	111
White House, D.C.	91
White Sands National Monument, N. Mex.	36
Whitman Mission National Historic Site, Wash.	91
William Howard Taft National Historic Site, Ohio	91
Wilson's Creek National Battlefield, Mo.	92
Wind Cave National Park, S. Dak.	37
Wolf Trap Farm Park For The Performing Arts, Va.	111
Wright Brothers National Memorial, N.C.	92
Wupatki National Monument, Ariz.	92
Yellowstone National Park, Wyo.-Mont.-Idaho	37
Yosemite National Park, Calif.	37
Yucca House National Monument, Colo.	93
Zion National Park, Utah	38



National Park Service
U.S. DEPARTMENT of the INTERIOR

As the Nation's principal conservation agency, the Department of the Interior has responsibility for most of our nationally owned public lands and natural resources. This includes fostering the wisest use of our land and water resources, protecting our fish and wildlife, preserving the environmental and cultural values of our national parks and historical places, and providing for the enjoyment of life through outdoor recreation. The Department assesses our energy and mineral resources and works to assure that their development is in the best interests of all our people. The Department also has a major responsibility for American Indian reservation communities and for people who live in Island Territories under U.S. administration.

☆GPO 1975 O - 589-829

For sale by the Superintendent of Documents
U.S. Government Printing Office
Washington, DC 20402 Price \$1.65

STOCK NUMBER 024-005-00612 5

