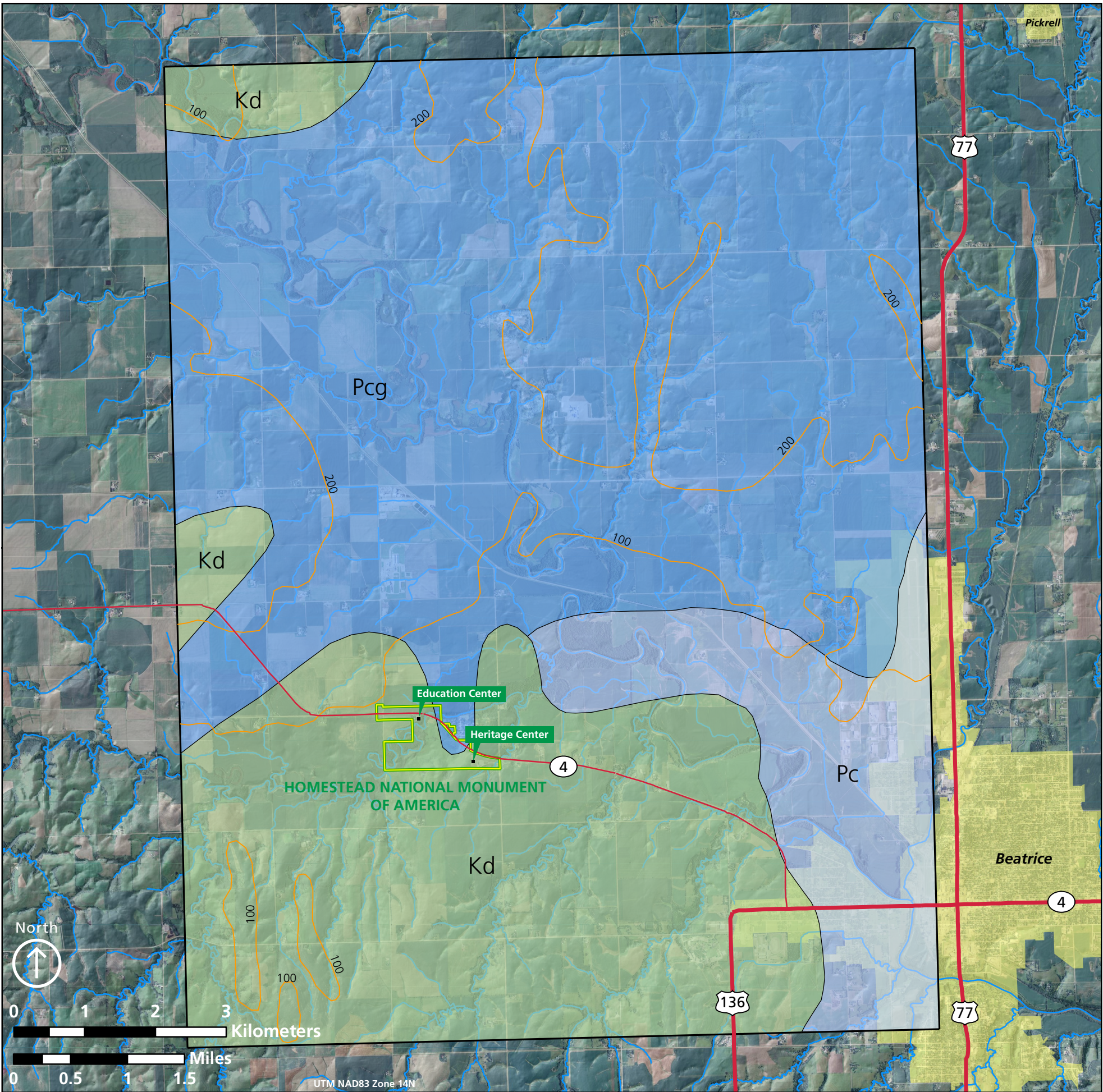




# Overview of Digital Geologic Data for Homestead National Monument of America



**NPS Boundary**

NPS Boundary

**Geologic Contacts**

known or certain

map boundary

**Quaternary Deposits Thickness**

100 Feet

200 Feet

**Geologic Units**

Kd - Dakota Sandstone

Pc - Chase Group

Pcg - Council Grove Group

This figure is an overview of compiled digital geologic data. It is not a substitute for site-specific investigations. Minor inaccuracies may exist regarding the location of geologic features relative to other geologic or geographic features on the figure. Based on the source map scale (1:250,000) and U.S. National Map Accuracy Standards, geologic features represented here are within 127 meters /417 feet (horizontally) of their true location.

This figure was prepared as part of the NPS Geologic Resources Division's Geologic Resources Inventory. The source map used in creation of the digital geologic data product was

Burchett, R.R., Dreeszen, V.H., Reed, E.C., and Prichard, G.E. 1972. Bedrock Geologic Map showing thickness of overlying Quaternary Deposits (scale 1:250,000). Miscellaneous Investigations Series Map I-729. U.S. Geological Survey.

Digital geologic data and cross sections for Homestead National Monument of America, and all other digital geologic data prepared as part of the Geologic Resources Inventory, are available online at the NPS Natural Resource Information Portal: <https://nriinfo.nps.gov/Reference.mvc/Search>. (Enter "GRI" as the search text and select Homestead National Monument of America from the unit list.)