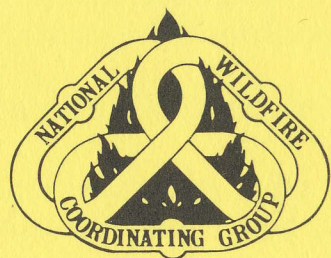


A Publication of the
**National Wildfire
Coordinating Group**

Sponsored by
United States
Department of Agriculture

United States
Department of the Interior

National Association of
State Foresters



Historical Wildland Firefighter Fatalities 1910-1996

PMS 822

NFES 1849

March 1997, 2nd edition

Historical Wildland Firefighter Fatalities 1910-1996

prepared by

National Wildfire Coordinating Group Safety and Health Working Team

NFES 1849

March 1997, 2nd edition

This data is an attempt to document historical wildland fire fatalities from the many different wildland fire suppression agencies. This report has been cross-referenced with the National Fire Protection Association and organized in the same seven reporting categories.

This second edition includes 54 additional fatalities and many corrections to the original data in the 1993 document. It also includes 1994, 1995 and 1996 fatality information. Each time this data is shared with fire managers it is updated with new entries and better information. We hope that this document remains dynamic in its changes and continues to be used for training and safety purposes.

This data is available at <http://fwspceaa.nifc.r9.fws.gov/~olson/pms/pms.html>

Comments regarding this report should be sent to the project leader: Pam Ensley, USDA Forest Service, Gifford Pinchot National Forest, Wind River Ranger District, 1262 Hemlock Road, Carson, WA 98610.

Additional copies of this publication may be ordered from: National Interagency Fire Center, ATTN: Great Basin Cache Supply Office, 3833 S. Development Ave., Boise ID 83705. Order: NFES #1849.

Contents

Summary of Fire Fatality Information	ii
Fire Fatality Information	1-14
Fire Related (Entrapments)	15-22
Miscellaneous Injury Related	23-25
Vehicle Related	26-29
Natural Activity Related	30
Medical or Sickness Related	31-34
Aircraft Accident Related	35
Inflicted Injury Related	36-38

Cause	Number	Percent
Total Fatalities	699	100
Fire Related(Entrapments)	407	58
Miscellaneous Injury Related	26	4
Vehicle Related	75	11
Natural Activity Related	1	0.1
Medical or Sickness Related	80	11
Aircraft Accident Related	88	13
Inflicted Injury Related	22	3
Fire Related(Entrapments)	407	58
Overrun	319	78
Backfire	8	2
Spot Fire	36	9
Sleeping on Fireline	4	1
Equipment Operations	23	6
Separated from Crew	10	2
Prescribed Fire	7	2
Totals	407	100
Miscellaneous Injury Related	26	4
Electrocution	7	26
Drowned	3	11
Fell into Fire	1	4
Asphyxiation	2	8
Unknown	6	23
Toxic Chemical Contact	2	8
Training	3	12
Equipment related	2	8
Totals	26	100
Vehicle Related	75	11
Responding to Fire	29	39
Returning from Fire	6	8
Struck by Vehicle	6	8
Equipment rollover on fire	21	28
Collision with Train	4	5
Riding on Apparatus	9	12
Totals	75	100
Natural Activity Related	1	0.1
Medical or Sickness Related	80	11
Heart Attack	72	90
Stroke	3	4
Pneumonia	1	1
Heat Stroke	3	4
Embolism	1	1
Totals	80	100
Aircraft Accident Related	62	13
Inflicted Injury Related	22	3
Rolling Rocks	1	5
Snag	19	86
Snag Felling	2	9
Total	22	100

DATE	FIRE NAME/ LOCATION	No.	AGENCY	FIRE BEHAVIOR OBSERVED	REMARKS
1910	Coeur d'Alene St. Joe, ID	72	USFS	Dry fuels and lightning followed by strong winds caused massive firestorms and rapid runs.	Seven large crews were overrun with no access, communication, and little equipment available.
1910	Cabinet NF	4	USFS	Same as above.	Four men panicked in an entrapment situation, ran uphill out of a rock slide being used as a safety zone.
1910	Pend Oreille NF	2	USFS	Same as above.	Two men ran into the flames. Witnesses said they appeared disoriented by smoke.
1926	King's Canyon Tolyabe NF, CA	5	USFS	Unanticipated downslope winds on lee side of Sierras pushed fire into second growth with brush.	Firefighters had gone downhill for water and were trapped on the road when the wind changed.
1929	Dollar Mt. Colville NF, WA	1	USFS	Sudden wind change in relatively light fuels.	Firefighter tried to outrun fire uphill.
1931	Coffee Mill Mariposa Ru, CA	3	CDF	Unknown	
1933	Kamus Burn Okanagon NF, WA	2	USFS	Fire in light fuels and wind changed direction.	Firefighters tried to outrun fire but failed.
1933	Griffith Park, CA	25	Other	Fire burned in light chaparral near Griffith Park. Winds shifted.	Firefighters tried to run to safety. 128 injured.
1935	Western Orange Co., CA	1	CDF	Unknown	Vehicle accident on the way to a fire.
1936	Chatsworth, NJ	5	Other	Wind shift in grass and trees.	Backfire operation.
1937	Blackwater Shoshone NF, WY	15	USFS	Sudden wind caused fire to blow up in heavy douglas-fir reburn. Spotfire made run uphill.	Firefighters went in from top toward spot fire. Part of the crew found safety on a rock point.
1937	Welcome Lake Huron NF, MI	1	USFS	Early spring fire, strong, dry winds from west. Fire crowned in jack pine and plantation.	CCC foremen was pulling his crew out when it started to crown. He was looking for 2 of his people, died within 100 feet of safety.
1938	Pepper Run, PA	8	Other	Fire burning in mix hardwood on fairly steep slope. Wind shifted and cross fireline below.	Squad boss told firefighters to run for safety. All ran uphill and were caught by fire. 134 acres.
1939	Rock Creek, Humboldt Tolyabe NF, CA	5	USFS	Sagebrush and grass fire made an unanticipated run upslope.	Five CCC firefighters from Paradise Camp died near the head of Rock Creek.
1939	Bixby Mt. Carmel, CA San Benito-Monterey Ru	1	CDF	Unknown	Died of burns. Calandra lookout was named for him.
1940	Silver Plume, Lincoln NF, NM	1	USFS	Sudden wind change and fire flared up.	Firefighter sleeping outside fireline.
1941	Kawailoa, HI	2	Other	Flashy fuels and the winds changed.	Two firefighters were unable to gain safety in thick staghorn fern.
1942	Weed Siskiyou Ru, CA	1	CDF	Truck fire.	Firefighter was run over by a vehicle at a truck fire in woods.
1943	Williams Hills Los Padres NF, CA	1	USFS	Fire made a run in chamise and buckwheat.	Dozer operator was building line in advance of fire. Dozer threw a track, operator was overrun.
1943	Burley Dist. I2 Rogers, ID	2	Unknown	Running brush fire.	Two firefighters trapped at head of the fire.
1943	Hauser Creek Cleveland NF, CA	11	USFS	Sudden wind shift under Santa Ana conditions. Maximum wind 8mph SW.	Crew of Marines caught in small canyon on main Hauser Creek (72 injuries).
1943	Sweetwater Canyon San Benito-Monterey Ru, CA	1	CDF	Unknown	Died of burns.
1944	Hot Spring, Payette NF ID	1	USFS	Unknown	Man found in sitting position on trail, fire had burned around him. Suspected heart attack or other health problem.
1945	San Benito-Monterey Ru Near Calandra Lookout Williams Canyon, CA	1	CDF	Unknown	Died of burns. Body not found until 1946.

1945	San Diego Ru CA	1	CDF	Unknown	Died as a result of injuries sustained at a fire. He was talking with dozer operator, caught his pants in the tracks and was pulled between the tracks and fender.
1946	Council, ID	1	USFS	Unknown	Jumper fatality. Was killed by snag. 7-5-46
1946	San Luis Obispo Ru, CA	1	CDF	Unknown	Died as a result of an engine rollover in fire.
1947	Bryant Canyon Angeles NF, CA	2	USFS	Spot fire below men burned upslope, trapping men in unburned fuel.	Burning rat ran out of main fire into brush. Spot fire spread uphill under men.
1948	Barrett Dam Cleveland NF, CA	1	USFS	Winds changed at night from SW to east and fire flared up.	Firefighter was separated from his crew.
1949	Walton Spur Stanislaus NF, CA	1	USFS	Swirling winds in light fuels in Tuolumne River Canyon.	Dozer operator trapped above fire.
1949	Warm Springs Payette NF, ID	1	USFS	Unanticipated strong winds caused flareup.	Firefighter dropped behind crew to eat lunch and was trapped.
1949	Hells Canyon Payette NF, ID	1	USFS	Fire fanned by high winds.	Firefighter stumbled and fell into fire.
1949	Mann Gulch Helena NF, MT	13	USFS	Rapid spread in light fuels burned upslope. Hot dry weather.	Smokeyjumpers jumped into unburned basin and fire hooked below them. Most firefighters failed to use burned area and were overrun.
1949	Oroville, Butte Ru, CA	3	CDF	Unknown	Killed while responding to a fire. Vehicle Accident.
1949	Napa Ru, CA	1	CDF	Unknown	Died of heart attack.
1950	Cleveland NF, CA	1	CDF	Trabucco Road	Fire took off from below, one firefighter made it to safety.
1950	Orange Ru, CA	1	CDF	Unknown	Died of asphyxiation.
1950	Pelitor Fire San Luis Obispo Ru, CA	1 3	CDF Other	Unknown	One CDF firefighter and three soldiers died of burns.
1952	Glenville Dist. AR	1	Other	Sagebrush and grass, high winds, high FDR, and homes threatened.	Individual firefighter fell in exhaustion in the fire's path.
1952	Morrell Fire Riverside Ru, CA	1	CDF	Unknown	Died of burns.
1952	Old Camp Fire Orange Ru, CA	1	CDF	Unknown	Died of burns.
1953	Rattlesnake Mendocino NF, CA	15	USFS	Unanticipated evening downslope wind. Local Fire Behavior	Part of the crew trapped during lunch break on a spot fire. Tried to outrun fire downhill.
1953	Bonnie Blue, VA	1	Other	Fire burned rapidly up a steep slope.	Firefighter became separated from the crew.
1953	Tulare Ru, CA	1	CDF	Unknown	Died of heart attack while dispatching.
1953	Hill Ranch, El Dorado Ru, CA	1	CDF	Unknown	Died of heart attack on fire.
1953	Little Ti Fire, CA	1	L.A. County	Unknown	Chief of L.A. Fire Dept. killed responding to fire.
1954	Tunnel No. 6 Tahoe NF, CA	3	USFS	Mono (dry east) winds caused a flareup at night.	Firefighters were sleeping in unburned area at edge of fire.
1954	Gap Creek, TN	3	Other	Strong wind pushed upslope and it crowned.	Firefighters were caught on slope above fire.
1954	Sugar Loaf Fire Calaveras Ru, CA	1	CDF	Unknown	Died when dozer rolled over.
1954	San Benito Ru, CA	1	CDF	Unknown	Died when engine was struck by train.
1954	Tulare Ru, CA	1	CDF	Unknown	Died as a result of contact with toxic chemicals on wildland fire.
1955	Brickyard, NJ	1	Other	Spot fire in woods.	Fire surrounded driver, he burned to death along Turner's Road.
1955	Sagebrush Malheur NF, OR	1	USFS	Fire was being mopped up in sage and grass. Drafts from a cumulus cloud caused winds.	Firefighter was separated from his crew and tried to outrun fire uphill. Remainder of crew reached a safety zone.
1955	Hacienda, CA	5	Other	Light fuel, high temp., low RH and unstable.	Foreman and crew were in bowl-like area when flashover occurred.
1955	Johnson Fire Prescott, AZ	1	Unknown	Fire Danger Rating "Extreme," and fire made run in light fuels.	Firefighter tried to outrun fire uphill.
1956	Inaja, Cleveland NF CA	11	USFS	Upslope winds in pm when Santa Ana winds ceased. Fire ran uphill.	Crew working on indirect line in steep canyon. Fire hooked under them before they could reach safety.

1956	East Highlands San Bernadino NF, CA	1	USFS	Upslope wind in light fuel after Santa Anas tapered off at night.	Dozer operator trapped before he could reach safety.
1956	Beegum Fires, Shasta, CA	4	CDF	Unknown	Died in vehicle accident returning to station from fire.
1956	Humboldt Ru, CA	1	CDF	Unknown	A cook died of a heart attack while on duty.
1956	Sonoma Ranger Unit, CA	1	CDF	Unknown	Died of heart attack.
1958	Shasta Ru, CA	1	CDF	Unknown	Died of electrocution.
1958	Albert Ranch Angeles NF, CA	1	USFS	Minor flareup as wind changed at night.	Firefighter trapped ahead of fire.
1958	Stewart Cleveland NF, CA	1	USFS	Minor flareup in chaparral under weakening Santa Ana conditions.	Firefighter scouting in brush ahead of fire.
1959	Decker Cleveland NF, CA	5	USFS	Downslope afternoon wind stopped and fire came upslope in early evening.	District Ranger and five men on state highway when fire came upslope, caught them in the open.
1959	Gun, Angeles NF CA	1	USFS	Minor flareup. Fire in front country canyon. Winds changed.	Firefighter was laying hose uphill and was caught by fishhook.
1959	Dry, Sequoia NF CA	1	USFS	Unexpected downslope afternoon wind on east facing slope.	Two firefighters were returning after going downhill for water. Fire came down hill and trapped them there.
1959	Pennington, TX	1	Other	High winds in grassy fuels.	Man on grader got in front of head of fire and was killed.
1959	San Luis Obispo Ru, CA	1	CDF	Unknown	Died of burns.
1959	Stable Fire San Bernardino N.F., CA	1	Unknown	Very hot, dry, unstable atmosphere.	Tried to outrun fire but apparently had a heart attack.
1959	Butte Ru, CA	1	CDF	Unknown	Died after a heart attack, just finishing his shift at fire.
1959	Scott Fire, El Dorado Ru, CA	1	CDF	Unknown	Killed by a rolling rock.
1959	Sequoia NF Tule River RD, CA	1	USFS	Unknown	Aircraft crash. Fire in canyon between rock bluffs. Pilot volunteered to dive low and drop in hazardous condition.
1959	Woodwardia Fire, CA	2	Unknown	Unknown	Airtanker dropped killing Native American crew members.
1960	Cummings Creek Umatilla NF, OR	1	USFS	Unexpected wind change in light fuel on ridge.	Firefighter dropped behind and couldn't keep up with the crew. Fire flared up below them.
1960	Silver City NC	1	Other	Fire in grass.	Firefighter burned to death while attempting to put out grass fire.
1960	FL	1	Other	Light fuels and unanticipated wind change.	Two people in jeep, one ran to safety.
1960	Lumberyard Fire Orange Ru, CA	1	CDF	Unknown	Died of pneumonia contracted on the fire.
1960	Sequoia NF, CA Tule Indian Res.	1	CDF	Unknown	Aircraft crash. Airtanker came over ridge for drop and clipped ridge. Reservation protection provided by USFS.
1960	Siskiyou NF, OR	1	USFS	Unknown	Snag fell on firefighter.
1960	Millard Fire, Angeles N.F., CA	1	Unknown	Unknown	AT 6 Airtanker crashed killing pilot.
1961	Higgins Ridge, UT	1	Utah State	Unknown	Walked into main rotor.
1961	Clearwater NF, ID	1	USFS	Unknown	Firefighter killed by snag.
1961	Sierra, Angeles NF, CA	1	USFS	Sudden, unanticipated wind change.	Firefighter unable to gain safety in time.
1961	Silver Creek Nez Perce NF, ID	2	USFS	Fire spotted in extremely steep terrain light fuel under gusty winds near bottom of fire.	Crew went to a chute above spot fire, all except two left chute when danger was obvious.
1961	Los Posadas Napa Ru, CA	1	CDF	Gasoline used at the fire station remained on clothing.	Died of burns on wildland fire.
1961	Sequoia NF, CA Cannell Mdw RD	3	USFS	Unknown	Helicopter crash (Bell 3-GB). Ship on reconaissance of fire, returned to base due to lack of fuel.
1962	Timberlodge Sierra NF, CA	4	USFS	Hot, dry, unstable atmosphere and light fuels.	Tornado-like action from air tanker vortices probably caused fire to blow up and trapped firefighters.
1962	Lassen-Modoc Ru, CA	1	CDF	Unknown	Died of heart attack.
1963	Susanville-Lassen-Modoc, CA	1	CDF	Unknown	Died of heart attack.
1963	GA	1	Other	Escaped control burn.	Firefighter overcome by smoke and/or coronary.
1963	Mt. Bullion-Madera Mariposa Ru, CA	1	CDF	Unknown	Died of electrocution.

1964	Coyote Los Padres NF, CA	1	USFS	Downslope wind through saddle in early afternoon.	Firefighters panicked and ran to lower part of saddle where temperature and carbon monoxide concentrations were too high
1964	Joshua Falls, VA	1	Other	Fire burned up draw toward firefighters.	A firefighter apparently refused to follow boss and was killed by heat.
1964	Don Pedro Fire Tuolumne Ru, CA	1	CDF	Unknown	Died of burns.
1964	San Bernadino Ru, CA	1	CDF	Unknown	Engine collided with a train responding to wildland fire.
1964	Tulare Ru, CA	1	CDF	Unknown	Died of heart attack while dispatching.
1965	Eldorado NF, CA	1	USFS	Unknown. Occurred during nightshift.	Firefighter died of asphyxiation. Was staying warm in vehicle.
1965	Santa Clara Ru, CA	1	CDF	Unknown	Died of heart attack.
1965	Helker, NC	1	Other	Wind speed increased, burning in sedge.	Man helping in control burn, caught in wire fence and burned.
1965	Kyle Fire Riverside Ru, CA	1	CDF	Unknown	
1965	Fairview Hollow, KY	3	Other	Fire in light fuels on steep slope.	Firefighters overrun by fire on steep slope.
1965	McCall, ID	2	USFS	Unknown	A jump plane crashed with spotter and pilot aboard. Occurred on a paracargo run after jumpers were dropped.
1965	Liebre Fire, Angeles N.F., CA	1	L.A. County	Unknown	L.A. Captain died setting backfire to save engine crew.
1966	Loop Angeles NF, CA	12	USFS	Unanticipated upslope wind in afternoon after Santa Ana winds stopped.	Crew cutting handline downhill in a chimney and part of the crew was unable to reach safety.
1966	Fairbanks, AK.	1	BLM	N/A	Smoke Jumper strangled during let-down after practice jump.
1967	Balliff San Bernadino NF, CA	1	USFS	Flareup at night in light fuel on steep slope.	Firefighter fell trying to escape flareup.
1967	Sundance Kootenai NF, MT	2	USFS	Fire blew up and made major run toward north under strong wind conditions.	Dozer operator and firefighter were ahead of fire and overrun. They tried to hide under the blade.
1967	Slaughter Apache NF, AZ	1	USFS	Fire became intense in precommercial thinning slash.	Incident Commander tried to outrun fire and couldn't hear warning calls from crew on road.
1967	Windsor, SC	1	Other	Weather dry and windy. Fire was moving fast and erratic in pine.	Firefighter trapped by fast moving head fire in dense smoke.
1967	MI	1	Other	Small fire, flashy fuels and gusty winds.	Firefighter lost backfire. Died of wounds 3 days later.
1967	Range, KS	1	Other	Fire in dense grass.	Firefighter panicked and tried to outrun fire.
1967	Ginnis Lake WI, DNR	1	State	Red pine plantation and oak near lake.	One man on tractor with plow was on a spot fire ahead of the main fire and was caught by fire.
1967	San Benito Monterey Ru, CA	1	CDF	Unknown	Died in dump truck accident.
1967	Livengood, AK.	2	BLM contractors	Unknown	B-25 crash due to late pull-out during retardant drop on fire.
1968	Sonoma Ru Briggs Crk, CA	1	CDF	Unknown	Died in a vehicle accident. Engine rolled over.
1968	Canyon Angeles NF, CA	8	USFS	Santa Ana weakened and unanticipated wind pushed fire upslope in late morning.	Firefighters tried to outrun fire uphill after flareup in brush below them.
1968	NC	1	PVT.	Unknown	A county ranger was suppressing fire. Died of third degree burns.
1968	Ivey, FL	1	Unknown	Heavy wiregrass. Unanticipated wind.	Dozer caught on stump. Operator overrun by fire.
1968	North Carolina #2, NC	1	Other	Unknown	Man, age 84, tried to beat fire with pine tops. Clothes caught fire, was dead when found.
1968	Riverside Ru, CA	1	CDF	Unknown	Died of heart attack.
1968	Williams Coronado NF, AZ	1	USFS	High temps, local gusty winds, cumulus clouds near the fire.	Burned trying to outrun fire.
1968	McGrath, AK.	4	BLM and contractors	Unknown	PB4Y2 air tanker crash enroute to fire after reload. (Three crew persons and one BLM observer killed.)
1969	Campbell Crk. Butte Ru, CA	1	CDF	Unknown	Died in a vehicle accident. Engine rolled over.
1970	Shasta-Trinity NF, CA	1	USFS	Unknown	Smokejumper fatality.
1970	McGrath, AK.	5	BLM contractors	N/A	Four BLM firefighters and co-pilot killed when overloaded DC-3 had an engine failure and crashed during takeoff-22 survived crash, but were seriously injured. Enroute.

1971	Banning (also known as Mack 2) San Bernadino NF, CA	1	USFS	Fire ran upslope in early evening,	Member of engine crew was laying hose downhill from road at night.
1971	Hog	1	Other	Unknown	National Guard drowned while swimming in river near fire camp.
1971	Eagle Rock, VA	1	Other	Reburn in rhododendron. Steep slope.	Three men were felling snags and were trapped by fire.
1971	Banks, AR	1	Other	Medium fuels, mod. winds, very high FDR,	Man was knocked unconscious by falling tree. He fatally burned.
1971	Romero Los Padres NF CA	4	USFS	Strong "sundowner" (Santa Ana) wind pushed fire downhill in the evening as expected.	Dozer operator and three firefighters burned to death as they hurried downhill.
1971	Lake Minchumina, AK.	1	BLM	Unknown	Firefighter struck by main rotor while exiting helicopter after emergency landing due to engine failure.
1972	Harris Ridge, ID	2	Other	Steep, rocky terrain, dry fuels and thunderstorms caused squirrely winds,	Two men on fireline. A rolling log hit them and they rolled into the fire, dying of suffocation.
1972	Warthog Morgan Co., TN	1	Other	Small 24 ac. fire. Wind gusts 20-25 mph, Fire crossed plowed line.	Plow operator trapped and suffocated on bench on upper side of fire.
1972	Mud Springs Fire Mendocino Ru, CA	1	CDF	Unknown	Crew supervisor died of heart attack on the fire.
1972	Burnt Ridge Fire	1	Unknown	Unknown	Heart attack, firefighter collapsed on the fireline.
1972	Bear Fire Las Padres N.F., CA	7	BLM contractors	Unknown	Evergreen 205 crashed killing the pilot and 6 members of a handcrew.
1973	Monterey Ru, CA	1	CDF	Unknown	Lookout died of heart attack.
1973	GA	8	Other	Escaped control burn.	Eight firefighters died of heart attacks. 3 over 70 yrs.
1973	Bell Valley, CA	1	CDF	Light brush. Weather clear and hot. Gentle rolling topography.	Equipment engineer and firefighter working on flank of fire near a gully. Man ran to road after a flareup, but died.
1973	Tuolumne - Calaveras Ru, CA	1	CDF	Unknown	Died in helicopter crash.
1973	Eureka, NV	2	BLM contractors	Unknown	B-17 airtanker crashed when severe turbulence was encountered while in low altitude, slow air speed phase of fire mission.
1974	Lindsay Fire Coronado N.F., CA	1	USFS	Unknown	Air crash. Air tanker making a drop. Class G fire.
1974	Kiana, AK	1	BLM contractors	N/A	A piper twin engine being used for air attack crashed attempting take off with only one engine, only the pilot aboard.
1974	Boise, ID	1	BLM contractors	N/A	B-26 airtanker collided w/another aircraft while taxiing for take off on fire mission, pilot killed. Pilot of other aircraft [non-fire related] was also killed.
1974	Washington	5	Unknown	Grass fire, steep canyon.	5 firefighters riding on the outside of an engine were crushed when engine rolled, while climbing up a steep hill to the head of a grass fire.
1975	Stockton, UT	2	PVT.	Sagebrush and grass, gentle to rolling topography. Wind changed direction.	Two county deputy sheriffs were working on flank of a small fire when the wind shifted.
1975	San Benito-Monterey Ru, CA	1	CDF	Unknown	Died of electrocution at a fire.
1976	Battlement Creek Fire Grand Junction CO, BLM	3	BLM	Frost-killed brush slope and narrow chimneys induced extreme fire behavior and uphill runs.	High intensity uphill run occurred during firing operations below a saddle exposed ridgeline.
1976	Buhler, KS	1	Other	Flashover occurred from building up gases on lee side of the wind break.	Fireman tried to outrun fire. An engine also burned.
1976	Grand Junction, CO	1	BLM	Unknown	B-26 contract pilot killed on retardant run.
1977	Cart Creek Ashley NF, UT	3	USFS	Wind changed on steep slope. Small fire.	Fire overtook crew on steep slope in sagebrush grass.
1977	Okanogan NF WA	1	USFS	Steep slopes, ponderosa pine. Fire spotted across canyon and spread rapidly uphill.	Foreman was scouting and fire crossed the canyon below him.
1977	New Jersey #1, NJ	1	Unknown	Shifting winds in 10' grass in a gully, spot fires.	Firefighters overrun after spot fires experienced.
1977	Bass River, NJ	4	Other	Crown fire during drought conditions.	Crew in converted military truck were trapped when they missed evacuation message.

1977	Honda Canyon Vandenburg AFB, CA	3	Other	Change in wind in dry brush with erratic winds 80 mph. Fire was pushed downhill in light brush by Santa Ana winds.	Fire Chief and assistant trapped while checking fire perimeter. Dozer operator also overtaken while widening fireline. All ran downhill to escape.
1977	Riverside, TX	1	Other	Winds gusting to 45 mph. Fire in heavy grass with strong winds.	Firefighter became trapped after engine became immobilized. Man trapped between fire and truck, fell and burned.
1977	Washington #1 WA	1	Unknown	30-40 mph winds with convection currents creating a 100' wide 1000' high whirlwind of fire.	Firefighter was trapped as he attempted to extinguish a burning field of grass.
1977	Middle Fire Angeles N.F., CA	2	L.A. County	Unknown	Helicopter night flying, one helicopter landed on top of the other at helibase.
1978	Lost Creek, OR	1	BLM	Slash burning 15 acres. Doug-fir clearcut.	One firefighter was trapped in burning operation and died.
1978	Terrell County, GA	1	Other	Fire in pine/grass pushed by 17 mph winds.	Tractor plow operator became confused in smoke and went into fire.
1978	Shasta Ru, CA	1	CDF	Unknown	Died of heat stroke.
1978	San Luis Obispo Ru, CA	1	CDF	Unknown	Died in the crash of "Airco 53".
1978	Shoshone, ID	1	BLM	N/A	Engine returning from fire went off road and rolled over.
1979	Saratoga Springs, CA	1	CDF	Fresh firefighter on 10 ac brush fire in June.	Firefighter either overcome by carbon monoxide or had a heart attack.
1979	Santa Clara Ru, CA	1	CDF	Unknown	Died of heat stroke.
1979	Oklahoma #1 OK	1	Unknown	Wind shifted, brought fire around crew.	Firefighters drove trucks into unburned grass to attack fire. Victim was caught trying to outrun fire on foot.
1979	Ship Island Salmon NF ID	1	USFS	Rapid fire spread.	Crew member and others were in hellspot when the fire came. Victim succumbed to smoke and hot air inhalation in fire shelter which had been deployed near a pile of gear. He was not wearing gloves.
1979	Spanish Ranch, CA San Luis Obispo Ru	4	CDF	Sudden change in wind direction trapped crew.	Crew walking on dozed fireline were overrun by fire.
1979	Okefenokee, FL	1	Other	Prescribed fire escaped and became a wildfire with a sudden wind shift.	Tractor plow operator overrun by escaped prescribed fire.
1979	Orange Ru, CA	1	CDF	Unknown	Died of toxic chemical exposure on wildland fire.
1979	SW Oregon	1	Other	Unknown	Reported in Aug.-Sept. 1979, Western Conference Journal.
1979	Texas	1	Unknown	Brush, pasture fire.	Firefighter riding on back step of brush fire engine, flanking the fire. Smoke and heat became too intense, engine pulled off fireline, losing firefighter off the back. Firefighter taken to hospital died 3 days later of thermal burns.
1979	Central, AK	1	BLM	N/A	Firefighter drowned in creek while swimming at fire camp.
1980	Mack Lack Huron Manistee NF, MI	1	USFS	Prescribed burn escaped into dense pine.	Tractor operator building fireline was swept over by fire. Tried to escape by foot.
1980	Texas #2, TX	1	Unknown	Unknown	Firefighter fatally burned by grass fire.
1980	Santa Clara Ru, CA	1	CDF	Unknown	Engine rolled down a steep burning hill. Winching accident.
1980	California	1	Unknown	Unknown	Firefighter was on top of engine operating a hand line and trying to cut off head of fire. Driver, in heavy smoke, drove into gully rolling the engine and crushed firefighter.
1980	Ely District BLM - NV	4	BLM and contractors	Unknown	Light fixed wing crashed killing pilot and 3 district fire personnel. People in the plane were attempting to drop a message to fire crews on ground, message got caught in tail of plane causing it to crash.
1981	Merritt Island USFWS Kennedy Space Center, FL	2	Other	Winds shifted and increased to 45 mph. Heavy fuel stressed by drought conditions.	Two person tractor plow crew was overrun by fire. Attempted to out run fire.
1981	Elizabeth, Angeles NF CA	1	USFS	Unknown	Fire grew on spot fire crew. They escaped opposite chief, then left local department. Chief drove out of fire, but died when he returned to search for departed crew.

1981	Williams Hill, SC	1	Unknown	Variable winds, heavy fuels stressed by drought conditions.	Operator plowing fireline became trapped. He sought shelter under tractor, got hot and tried to run through fire. Second firefighter ran to safety of nearby road.
1981	Paul, ID	3	BLM	Unknown	C-182 aircraft struck electrical wire. Three killed.
1982	Canoe Landing, WI Eau Claire Co. Forest	1	State	Erratic wind conditions. Fire involved timber and brush.	Sudden change in wind direction trapped a tractor plow operator while plowing fireline.
1982	Humboldt Ru, CA	1	CDF	Unknown	Died of heart attack while walking his crew to fire.
1983	Mechlenburg (State ?)	1	Unknown	Firewhirl developed in portion of log debris unit being burned. Spot fire occurred in adjacent plantation.	Prescribed burn in logging debris. Operator of plow caught by firewhirl as he attempted to suppress spot fire.
1983	Nevada #1	1	Carson City District BLM NV	Winds shifted during backfire operation.	Two groups were conducting a backfire operation when winds shifted. Both drove out of the area thinking victim was with the other group. Victim's fire shelter was with one of the engines
1983	Utica, NY	1	Unknown	Unknown	Using firebroom to extinguish grass fire.
1983	Medina, OH	1	Unknown	Unknown	Extinguishing a grass fire.
1983	Beverly, MA	1	Unknown	Unknown	Advancing a hoseline at a woods fire.
1983	Holland, OH	1	Unknown	Unknown	Extinguishing a leaf fire.
1983	Avoca, PA	1	Unknown	Unknown	Responding to a grass fire.
1983	Hope Mill, NC	1	Unknown	Unknown	Working at a woods fire.
1983	Claflin, KS	1	Unknown	Unknown	Extinguishing a grass fire.
1983	Nara Vista, NM	1	Unknown	Unknown	Fighting a grass fire.
1983	Ft. Yukon, AK	1	BLM	N/A	Firefighter died of heart attack while in fire camp.
1983	R8	1			B-26 hit tree on drop run. 3/5/83
1984	Joshua, TX	1	Unknown	Unknown	Operating at a grass fire.
1984	Spicewood, TX	1	Unknown	Unknown	Operating at a brush fire.
1984	Mena, AR Ouachita NF	2	USFS	Unknown	Cutting fireline.
1984	Rainbow Springs Ouachita NF AR	2	USFS	Moderate drought conditions, 30 mph winds, fire burning in pine and brush on 30-50% slope.	A tractor boss and dozer operator were caught in sudden flareup while traveling down fireline. Abandoned dozer and tried to out run fire.
1984	Sweet Home, OR	1	BLM	Unknown	Working at prescribed burn of 46 acres.
1984	Jackson, CA Amador - El Dorado Ru	1	CDF	Light fuels	Operating with backpack extinguishers on grass fire, stepped on powerline. Died of electrocution.
1984	Clear Lake, CA Lake - Napa Ru	1	CDF	Light fuels	Stretching hoseline to fire, no safety gear, direct attack, volunteer firefighter
1984	Texas #3 TX	1	Unknown	42 mph winds with fire burning in grass and rangeland. Wind suddenly changed direction.	Firefighter took position near the head of the fire to attack with hoseline. Wind changed direction pushing fire towards engines. Firefighter abandoned their engines and tried to out run fire.
1984	Forest Hill, LA	1	Unknown	Unknown	Responding to grass fire. In private vehicle.
1984	Northfield, VT	3	Unknown	Unknown	Responding to grass fire in Roxbury, VT.
1984	Cornelia, GA	1	Unknown	Unknown	Responding to grass fire.
1984	Cottage Grove, OR	1	Unknown	Unknown	Responding to forest fire.
1984	Humansville, MT	2	Unknown	Unknown	Responding to grass fire.
1984	Kentucky	1	Unknown	Grass fire.	Firefighter riding on back of engine as driver backed down dirt road, engine passed over rut, bounced off one firefighter who was run over by the rear wheels.
1985	Kahneetah Lodge Warm Springs, OR	2	BIA	Fire burning in sagebrush, grass and juniper.	Three people tried to extinguish fire by beating flames with blankets. It appeared to be under control, fire below them ran. Two ran uphill, flanking perimeter and were over run. One survivor took refuge in the black, severe burns.
1985	Sandlin Bay Columbia, CO	1	Unknown	Fire spotted across line during severe drought conditions	Operator of dozer caught by fire while cutting line.

1985	Midway, FL	1	Unknown	Unknown	Handling a charged hose.
1985	Golden Gate Ests. FL, DNR	1	State	Fire developed three different heads and blew up as heads drew together in heavy fuels which had been killed earlier by freeze. Winds 20 mph.	Operator of plow unit unaware of adjacent fire heads. Trapped and over run by fire.
1985	Adams Run Summersville, SC	1	Unknown	Drought conditions and 30 mph winds caused erratic fire behavior. Sudden increase in spread rate and intensity.	Tractor operator plowing line caught by rapid fire progress.
1985	5 Mile Fire, Wenatchee NF, WA	1	BIA	Unknown	Struck by snag.
1986	Montrose, CO	4	BLM	Unknown	SA-3158 struck electrical wire, four killed.
1986	Ace Creek Fire, WA	1	Unknown	Unknown	Struck by green snag. Enroute to fire assigned area.
1986	Anderson Creek Fire Boise N.F., ID	4	USFS	Unknown	4 crew members were killed when the army truck they were riding in drove off the road and over turned army deuce & a half.
1987	Lake Co. Lauder, CA	1	CDF	Unknown	CDF helitack crew member was caught by rapid fire progression.
1987	Klamath NF, CA	1	Other	Unknown	CA. National Guard was killed in accident.
1987	Klamath NF, CA	1	USFS	Unknown	Forest Service employee struck by motorcycle. 9-1-87
1987	Shasta Trinity NF, CA	1	Contract	Unknown	Contractor killed when his dozer rolled over him on fire. 6-28-87
1987	Hamm Fire Stanislaus NF, CA	1	USFS	Unknown	Killed by snag he was falling. 9-11-87
1987	Six Rivers NF, CA	1	Other	Unknown	CCC killed when snag struck vehicle. 9-5-87
1987	Okanogan NF, WA	1	Contract	Unknown- Reynolds Creek Fire	Contractor killed by tree he fell. 7-17-87
1987	Klamath NF, CA	1	BIA	Unknown	Died of heart attack. 10-1-87
1987	CA	1	CDF	Unknown	Pilot killed in S-2 tanker crash. 10-7-87
1987	Shasta Trinity NF, CA	3	USFS	Unknown	Pilot and crew of C-119 killed, plane broke apart on retardant run.
1987	Inverness, FL, Vol. FD	1	PVT.	Unknown	Heart attack while pulling hose at a brush fire.
1987	Clanton, AL Gap Mtn. Vol. FD	1	PVT.	Unknown	Severe thermal burns resulting from being trapped in the cab of a tanker that rolled over returning from woods fire.
1987	Summit, MS Sunnyhill Vol. FD	1	PVT.	Unknown	Heart attack while responding to fire.
1987	Cisco, TX, Cisco Vol. FD	1	PVT.	Unknown	Heart attack after operating at a grass and brush fire.
1987	Azle, TX, Spillway Vol. FD	1	PVT.	Unknown	Heart attack at a grass fire.
1987	Swansea, MA, Vol. FD	1	PVT.	Unknown	Heart attack at a brush fire.
1987	East Bernstadt, KY, Vol. FD	1	PVT.	Unknown	Heart attack at a woods fire.
1987	White Sands, NM	2	ARMY	Unknown US Army- contract	Dropping retardant when plane crashed.
1987	Douglas, KS, Butler Vol. FD	1	PVT.	Unknown	Fell from extended bumper area of brush vehicle and crushed by wheels.
1987	Kansas	1	Unknown	Grass fire.	Firefighter riding on left front fender of engine using booster hose, was bounced off and run over by front and back tires.
1988	Rosholt, WI, Vol. FD	1	PVT.	Unknown	Lost control on curve while driving engine to grass fire.
1988	Munfordville, KY, Vol. FD	1	PVT.	Unknown	Thrown from cab of engine and crushed while responding.
1988	Tampa, FL, Hillsboro Vol. FD	1	PVT.	Unknown	Struck by a truck at an intersection while responding in brush unit.
1988	Sebring, FL, Vol. FD	1	PVT.	Unknown	Heart attack while responding.
1988	S. Carolina Forestry Dept., SC	1	PVT.	Unknown	Stroke while issuing a summons at a grass fire.
1988	San Antonio, TX, Vol. FD	1	PVT.	Unknown	Heart attack while returning from grass fire.
1988	Timber Lake, SD, Vol. FD	1	PVT.	Unknown	Heart attack while using hand tools at grass fire.
1988	Birmingham, AL	1	Other	Unknown	Heat stroke while checking flanks in woods fire.
1988	MT	1	BIA	Unknown	BIA employee killed in vehicle accident.
1988	Fayetteville, NC	1	PVT.	Unknown	VFD employee killed by falling tree. 12-14-88
1988	Shoshone NF, WY	1	BLM	Unknown- Clover Fire	Killed by falling tree.
1988	MT	1	Other	Unknown	Killed by a falling tree. 8-9-88

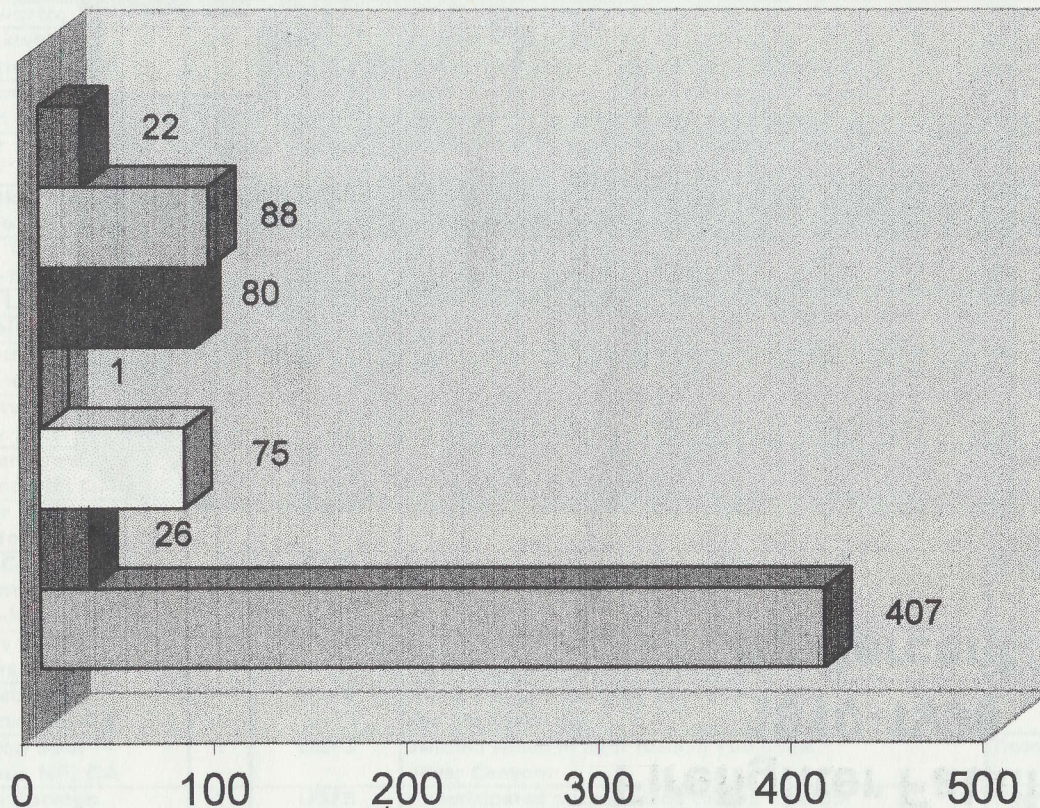
1988	WY	1	Other	Unknown	Aircraft accident killed contractor.
1988	WA	2	Other	Unknown	Two Canadians killed in aircraft accident. 8-9-88
1988	WY	1	BLM	Unknown	BLM employee killed in aircraft accident. 8-19-88
1988	Sequoia NF, CA	1	USFS	Unknown - Havilah Fire	USFS employee killed in aircraft accident. 8-12-88
1988	OR	1	USFS	Unknown	USFS employee killed in aircraft accident. 7-14-88
1988	Blue Hole #6, OR	1	Other	Prescribed burn	Contractor entrapped on prescribed burn. No Shelter deployed. 5-24-88
1988	Belle River FD, IL	1	PVT.	Unknown	Electrocuted after contact with down powerline.
1988	Brush Coulee Fire, MT	1	BIA	Unknown	Apparatus rolled off hillside. 8-10-88
1988	Bellevue, ID	1	PVT.	Unknown - volunteer	Crushed by over turned tanker.
1988	Wenatchee NF, WA	2	DNR	Unknown - contractor- Dinkleman Fire	Helicopter crash while making water drops.
1988	New Albany, IN	1	PVT.	Unknown - volunteer	Tanker over turned returning from brush fire.
1988	Flathead NF, MT	1	BIA	Unknown- Red Bench Fire	Struck by falling snag.
1988	Bushnell, FL	2	PVT.	Unknown - volunteer	Struck by semi-truck while at grass fire.
1988	Hood River Vol, FD, OR,	1	PVT.	Unknown	Heart attack while pulling hose.
1989	Buckhorn DNR Wayne-Hoosier NF, OH	1	State	Late morning wind shift resulted in sudden increase in fire.	No shelter deployed. Possible methane gas implication from nearby mines. 3-27-89
1989	Tonto NF, AZ	1	BIA	Unknown	BIA employee struck by lightning. 7-10-89
1989	Wenatchee NF, WA	1	USFS	Unknown	Died of heart attack in camp. 9-17-89
1989	CA	1	CDF	Unknown	Killed by a falling tree. 7-9-89
1989	Curren Mt. Fire, Nez Perc NF, ID	1	USFS	Unknown	Forest Service employee drowned while in fire camp. 7-9-89
1989	Ghent, NY	1	PVT.	Unknown - volunteer	Heart attack while responding to fire.
1989	Noel, MO	1	PVT.	Unknown - volunteer	Motor vehicle accident while responding to timber fire.
1989	Wood Lake, MN	1	PVT.	Unknown - volunteer	Heart attack while setting up water tank.
1989	Los Padres NF, CA	1	State	Unknown - Calif. inmate crew	Killed by snag.
1989	Bent, NM	1	PVT.	Unknown - volunteer	Heart attack at brush fire.
1989	Conneaut Lake, PA	1	PVT.	Unknown - volunteer	Heart attack while resting after using fire rake.
1989	Athens, AL	1	PVT.	Unknown - volunteer	Heart attack while rolling hose after fire.
1989	Jacksonville, AR	1	PVT.	Unknown - volunteer	Heart attack while rolling hose after fire.
1989	TX	1	Unknown	Unknown	Burned cutting fireline.
1990	Mendocino NF, CA Recer Fire	1	CDF	Snag patch. Crews were warned of snag problems, but not aware of full extent.	Died of head injury inflicted by snag. Tree struck firefighter as he was packing hose up fireline. 8-13-90
1990	AK	1	USFS	Unknown	Died of heart attack. 7-9-90
1990	Snowshoe Fire, Malheur NF, OR	1	USFS	Unknown	Died of stroke. 8-15-90
1990	Shasta Trinity NF, CA	1	CDF	Unknown	Died of heart attack. Pick up labor. 8-17-90
1990	Dude Fire Tonto NF AZ	6	State	Hot, dry, unstable atmosphere. Extremely low fuel moisture. Thunder cell formed over convection column, strong gusty winds resulted, pushing fire over all control lines.	State crew was trapped in a shallow draw. Shelters were deployed. Some victims were seen running with their shelters. Poor communication, entire fire using one radio channel. No safety zones accessible to this crew.
1990	California Fire, CA Riverside Ru	2	State	Backfiring from handline. Overrun by fast running fire on moderate to steep slopes in light fuels during heavy shifting winds and extreme temps.	Entrapment of state crew (17), shelters were deployed, three others sustained burns. 6-27-90
1990	Waist State Park UT	2	State	Winds increased in speed, fire seen spotting.	Entrapment of state crew in Wasatch Mtn., one shelter deployed. Dozer operator and deputy sheriff fatally burned. 8-26-90
1990	Silver Crk. Colville Reserv., WA	1	Other	Unknown	Helicopter contractor. 9-11-90
1990	Wellston, OK	1	PVT.	Unknown-volunteer	Heart attack.
1990	Los Padres NF, CA	1	USFS	Unknown- Ynez Fire	Pulmonary embolism resulting from fall.
1990	Grand Coulee, WA	1	PVT.	Unknown - volunteer	Asphyxia and burns trying to outrun fire.
1990	Quincy, FL	1	PVT.	Unknown - volunteer	Heart attack while responding to brush fire.
1990	Havre de Grace, MD	1	PVT.	Unknown - volunteer	Collision enroute to station for fire-storm emergency.
1990	Wichita, KS	1	PVT.	Unknown- Sedgwick Co. Fire Dept.	Heat stroke at a grass fire.

1990	Olympic NF, WA	2	USFS	Unknown- contractor-Wynoochee Fire	Aircraft crash while water dropping. 9-30-90
1991	Ziplock Fire Cibola NF NM	1	USFS	Unknown	Regional lead plane pilot, Beechcraft lead plane, leading air tanker 119 pulled up after retardant run, started left turn and continued roll left until almost inverted, nose down. 6-21-91
1991	Routt NF CO	1	USFS	Small fire, completed line.	Two firefighters had just completed lining a small fire, they were taking a rest on the line, a snag fell out of the perimeter, striking one man on the chest. 9-19-91
1991	Marysville, KS	1	PVT.	Unknown - volunteer	Heart attack at prairie fire. 3-26-91
1991	Hendersonville, TN	1	PVT.	Unknown - volunteer	Tanker rollover while responding to fire.
1991	New Buffalo, MI	1	PVT.	Unknown - volunteer	Heart attack responding to grass fire. 7-11-91
1991	Stanislaus NF, CA	1	USFS	Unknown - contractor-Pine Fire	Helicopter crash lowering water tanks. 7-26-91
1991	MT	2	USFS	Unknown - contractors	Aircraft crash while enroute to Missoula Fire Center. 10-16-91
1991	Oakland, CA	1	PVT.	Unknown - Oakland Fire Department	Burned after being struck by powerline on urban interface fire. 10/21/91
1991	Fleming Neon, KY	2	PVT.	Unknown - volunteer	Burned in sudden flare up. 10-29-91
1991	Collinsville, AL	1	PVT.	Unknown - volunteer	Electrocuted by down powerline. 11-29-91
1991	Missoula, MT	1	USFS	Unknown	Fire training. 5-31-91
1992	Boise NF, Cascade, ID	1	USFS	Unknown	Killed by falling tree on fireline. 7-31-92
1992	Pryor Fire Willamete NF, OR	1	State	Unknown	Killed by falling tree. 8-31-92
1992	Kennewick, WA	1	PVT.	Unknown	Volunteer killed while riding on fire apparatus. Vehicle rolled over.
1992	Fond Du Lac, WI	1	PVT.	Unknown	Died of heart attack while building line on grass fire. 7-31-92
1992	Glenwood Springs, CO	1	PVT.	Unknown	Died of heart attack while picking up equipment on fire. 6-29-92
1992	Calaveras Co., CA Tuolumne - Calaveras Ru	1	CDF	Unknown	Pilot killed. S-2 airtanker. 6-19-92
1992	Mansfield, LA	1	PVT.	Unknown	Apparatus crash. 10-12-92
1992	Caldwell, TX	1	PVT.	Unknown	Apparatus crash. 12-1-92
1992	Crowley, TX	1	PVT.	Unknown	Apparatus rollover. 12-5-92
1992	El Dorado NF, CA	2	Contract	Unknown	Aircraft accident. 10-1-92
1992	Menard, TX	1	PVT.	Unknown - volunteer	Collision with tanker responding to grass fire.
1992	Bryan, TX	1	PVT.	Unknown - volunteer	Lost control while responding to grass fire.
1993	Angeles NF, CA	2	LA County	Spotting above crew. Urban interface fire.	Fire burned over. Some shelter deployment did occur. 8-20-93
1993	Santa Fe N.F. San Ysidro, NM	1	USFS	Major, localized wind event 40-50 mph.	20 acre spot fire on 16,000 acre prescribed burn. Trapped sixteen crew persons. 4-22-93
1993	Lulkin, TX	1	PVT.	Unknown	Seasonal firefighter had heart attack. 1-31-93
1993	Monhiggin Lake, NY	1	PVT.	Unknown	Volunteer had heart attack. 7-9-93
1993	Florahome, FL	1	PVT.	Unknown	Volunteer had heart attack. 8-15-93
1993	Forest Grove, OR	1	ODF.	Unknown	Seasonal firefighter died in apparatus rollover. 9-6-93
1993	Howell, NJ	1	PVT.	Unknown	Volunteer struck by vehicle. 11-15-93
1994	Tuskegee, AL	1	USFS	Unknown	Heart attack
1994	Alva, OK	1	Volunteer	Firefighters attempted to cut off and suppress a fire blowing up a canyon below them.	Engine overthrow - Firefighter riding on back of engine at night in heavy smoke. Driver drove off edge of canyon wall, firefighter on back was thrown off and engine landed on top of him.
1994	Trendon, MI	1	Volunteer	Unknown	Heart attack
1994	Vantmallo, AL	1	Volunteer	Unknown	Water tender accident.
1994	Augusta, WI	1	Volunteer	Grass fields and oak ridges approx. 80 acres. Large gust of wind suddenly increased flame heights from 1 - 2 ft. to 20 - 25 ft. in seconds	Burn over - Firefighters tried to outrun advancing 25' wall of fire on foot and one fell, receiving 3rd degree burns over 50% of body. Died 15 days later. He was wearing turn out gear, coat, helmet, and boots.
1994	Lewellen, NE	1	Volunteer	Unknown	Water tender accident.

1994	South Canyon Fire Glenwood Springs, CO	14	BLM/USFS	Fuels extremely dry and susceptible to rapid, explosive, extreme fire behavior and reburn in gamble oak was not recognized. A cold front passed through. Maximum rates of spread of 18 mph and flames as high as 200 - 300 feet.	Available weather forecasts and expected fire behavior info not provided to firefighters, adequate lookouts not used, escape routes and safety zones inadequate for the burning conditions. Failing to outrun the flames, 12 firefighters perished. 2 helitack crew members on top of the ridge also died trying to outrun the fire. The remaining 35 firefighters survived by escaping out east drainage, seeking a safety area and deploying fire shelters.
1994	Guide Fire Gila, N.F., N.M.	3	USFS	Unknown	Helicopter crash - Two firefighters and one pilot died when helicopter crashed. They were on an initial attack mission.
1994	Bulter Cr. Fire Missoula, MT	2	USFS, Contractor	Unknown	Airtanker crash - Airtanker crashed while working on Bulter Creek Fire.
1994	Tyee Fire Wenatchee, N.F., WA	1	USFS, Contractor	Unknown	Heart attack - Water tender driver suffered a fatal heart attack while on stand by in a staging area. Age 58.
1994	Angeles, N.F., CA	3	USFS, Contractor	Unknown	Airtanker crash-C-130 airtanker was headed to drop retardant on brush fires and crashed. All three crew members died in crash.
1994	Danny Fire Plumas N.F., CA	1	USFS, Contractor	Unknown	Water tender accident - Water tender operator involved in a single vehicle accident while enroute to fire. Operator died at scene.
1994	Hull Mtn. Fire Medford, OR	1	USFS, Contractor	90 degree temps. RH 22%, oak, madrone, ponderosa pine. Spotting up to one - quarter mile. Fire intensity quickly grew and became a large plume dominated event.	Burnover - dozer - critical fire behavior predictions not available to victim. Individual working alone, no communications, no lookout, no dozer boss. Victim had no wildland firefighter training.
1994	Boise N.F., ID	1	EFF, BLM	Unknown	Motor vehicle accident - An employee of fire cache died following a vehicle accident while delivering cache supplies to a fire.
1994	Chicken Complex Payette N.F., ID	1	Military USFS	Unknown	Helicopter crash - Military chinook helicopter crashed on the chicken complex killing one military flight crew member.
1994	Cedar Fire Brasstown R.D. Chattahoochee Oconee N.F., GA	1	USFS	Fire exhibited very erratic fire behavior, winds 25+ mph, flame heights reported to reach 79 - 90 feet, Heavy leaf litter.	Victim was pulling off the line with two other firefighters and following a logging road away from fire. The victim was last seen stopping and deploying shelter as if too exhausted to continue on. Burnover.
1994	Tennessee State	1	PVT.	Grass fire leading into hardwood forest.	Civilian started grass fire on own property, it escaped into hardwood forest. Civilian was trying to extinguish when fire changed direction and trapped him.
1995	Tennessee	1	TSF	Unknown	Heart attack
1995	Claude, TX	2	Volunteer	Unknown	Vehicle/Train
1995	Willard, NM	1	Volunteer	Unknown	Vehicle
1995	Era, TX	1	Volunteer	Unknown	Heart attack
1995	Malo, WA	1	Volunteer	Unknown	Heart attack
1995	So. China, ME	1	Volunteer	Unknown	67 year old town forest fire warden. Died of a heart attack while walking up the flank of a one acre fire towards his truck.
1995	Gallupville, NY	1	Volunteer	Unknown	Heart attack
1995	Greebriar, TN	1	TSF	Unknown	Heart attack
1995	Princess Anne, MD	1	Volunteer	Unknown	Heart attack
1995	Ramona, CA	3	FS/Contractor	Unknown	Aircraft accident - Two firefighting planes involved in a mid - air collision. Aircraft was returning from the Butterfield Fire and in the process of landing.
1995	Point Fire Kuna RU, ID	2	Volunteer	Sudden winds gusts 40 to 50 mph. Firefighters left burned area and drove in to heavy, unburned fuels.	Burnover - Decision by the firefighter to leave the safety of the burned area. Vehicle engine failure, firefighters entrapped in their vehicle.
1995	E. Providence, AL	1	Volunteer	Unknown	Heart attack
1996	Mariette, OK	1	Volunteer	Unknown	Heart attack
1996	Castle, OK	1	Volunteer	Unknown	Heart attack
1996	Golden City, MO	1	Volunteer	Unknown	Heart attack

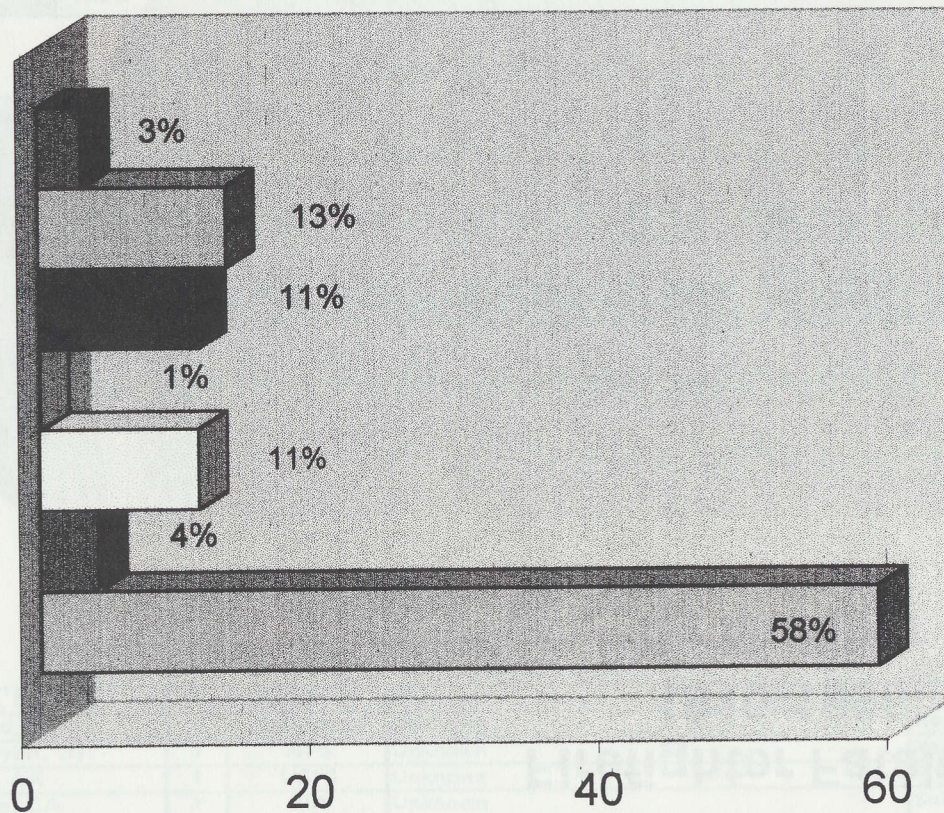
1996	Wayne, OK	1	Volunteer	Unknown	Engine rollover, victim crushed.
1996	Fruitland, UT	1	Volunteer	Unknown	Heart attack
1996	Bryce Canyon, UT	1	NPS	Unknown	Vehicle rollover - Vehicle was off - road responding to a fire.
1996	Globe, AR	1	USFS	Unknown	Physical training. Crew member died of heat stress during run.
1996	CDF Fire, CA	1	BIA	Unknown	Suicide/hanging. The firefighter left his crew in fire camp and took his own life in the vicinity of the fire. Found 2 days later.
1996	Colstrip, MT	2	PVT.	Prarie fire, short grass, fire changed direction.	Three local people fighting fire from truck w/water and hose. Tire went flat, fire changed direction and overtook them as they tried to outrun the blaze. Burnover. Ages 68, 72
	Total	699			

Firefighter Fatalities 1910-1996 By Number



- Inflicted Injury Related
- Aircraft Accident Related
- Medical or Sickness Related
- Natural Activity Related
- Vehicle Related
- Miscellaneous Injury Related
- Fire Related(Entrapments)

Firefighter Fatalities 1910-1996 By Percent



- Inflicted Injury Related 3%
- Aircraft Accident Related 13%
- Medical or Sickness Related 11%
- Natural Activity Related 1%
- Vehicle Related 11%
- Miscellaneous Injury Related 4%
- Fire Related(Entrapments) 58%

DATE	FIRE NAME/ LOCATION	No.	AGENCY	FIRE BEHAVIOR OBSERVED	REMARKS
1910	Coeur d'Alene, ID St. Joe	72	USFS	Dry fuel and lightning followed by strong winds caused massive firestorms and rapid runs.	Seven large crews were overrun with no access, communication, and little equipment available.
1910	Cabinet NF	4	USFS	Same as above.	Four men panicked in an entrapment situation, ran uphill out of a rock slide being used as a safety zone.
1910	Pend Oreille NF	2	USFS	Same as above.	Two men ran into the flames. Witnesses said they appeared disoriented by smoke.
1926	King's Canyon Toiyabe NF, CA	5	USFS	Unanticipated downslope winds on lee side of Sierras pushed fire into second growth with brush.	Firefighters had gone downhill for water and were trapped on the road when the wind changed.
1929	Dollar Mt. Colville NF, WA	1	USFS	Sudden wind change in relatively light fuels.	Firefighter tried to outrun fire uphill.
1933	Kamus Burn Okanagon NF, WA	2	USFS	Fire in light fuels and wind changed direction.	Firefighter tried to outrun fire but failed.
1933	Griffith Park, CA	25	Other	Fire burned in light chaparral near Griffith Park. Winds shifted.	Firefighters tried to run to safety. 128 injured.
1936	Chatsworth, NJ	5	Other	Wind shift in grass and trees.	Backfire operation.
1937	Blackwater Shoshone NF, WY	15	USFS	Sudden wind caused fire to blow up in douglas-fir reburn. Spotfire made run uphill.	Firefighters went in from top toward spot fire. Part of the crew found safety on a rock point.
1937	Welcome Lake Huron NF, MI	1	USFS	Early spring fire, strong, dry wind from west. Fire crowned in jack pine and plantation.	CCC foremen was pulling his crew out when it started to crown. He was looking for two of his people, died within 100 feet of safety.
1938	Pepper Run, PA	8	Other	Fire burning in mix hardwood on fairly steep slope. Wind shift and cross fireline below.	Squad boss told firefighters to run for safety. All ran uphill and were caught by fire. 134 acres.
1939	Rock Creek, Humboldt Toiyabe NF, CA	5	USFS	Sagebrush and grass fire made an unanticipated run upslope.	Five CCC firefighters from Paradise camp died near the head of Rock Creek.
1939	Bixby Mt, Carmel, CA San Benito-Monterey Ru	1	CDF	Unknown	Died of burns. Calandra Lookout was named for him.
1940	Silver Plume, Lincoln NF, NM	1	USFS	Sudden wind change and fire flared up.	Firefighter sleeping outside fireline.
1941	Kawailoa, HI	2	Other	Flashy fuels and the winds changed.	Two firefighters were unable to gain safety in thick staghorn fern.
1943	Williams Hills Los Padres NF, CA	1	USFS	Fire made a run in chamise and buckwheat.	Dozer operator was building line in advance of fire. Dozer threw a track, operator was overrun.
1943	Rogerson, ID Burley Dist. 12	2	Unknown	Running brush fire.	Two firefighters trapped at head of the fire.
1943	Hauser Creek Cleveland NF, CA	11	USFS	Sudden wind shift under Santa Ana conditions. Maximum wind 8 mph SW.	Crew of Marines caught in small canyon on main Hauser Creek (72 injuries).
1943	Sweetwater Canyon, CA San Benito-Monterey Ru, CA	1	CDF	Unknown	Died of burns.
1945	Williams Canyon, CA Near Calandra Lookout San Benito-Monterey Ru	1	CDF	Unknown	Died of burns. Body not found until 1946.
1947	Bryant Canyon Angeles NF, CA	2	USFS	Spot fire below men burned upslope, trapping men in unburned fuel.	Burning rat ran out of main fire into brush. Spot fire spread uphill under men.
1948	Barrett Dam Cleveland NF, CA	1	USFS	Winds changed at night from SW to east and fire flared up.	Firefighter was separated from his crew.
1949	Walton Spur Stanislaus NF, CA	1	USFS	Swirling winds in light fuels in Tuolumne River Canyon.	Dozer operator trapped above fire.
1949	Warm Springs Payette NF, ID	1	USFS	Unanticipated strong winds caused flare-up.	Firefighter dropped behind crew to eat lunch and was trapped.
1949	Mann Gulch Helena NF, MT	13	USFS	Rapid spread in light fuels burned upslope. Hot dry weather.	Smokejumper jumped into unburned basin and fire hooked below them. Most firefighters failed to use burned area and were overrun.
1950	Pellitor Fire, CA San Luis Obispo Ru	4	CDF	Unknown	One CDF firefighter and three soldiers died of burns.

1950	Cleveland NF, CA	1	CDF	Trabucco Road	Fire took off from below. One firefighter made it to safety.
1952	Glenville Dist. AR	1	Other	Sagebrush and grass, high winds, high FDR, and homes threatened.	Individual firefighter fell in exhaustion in the fire's path.
1952	Morrell Fire Riverside Ru, CA	1	CDF	Unknown	Died of burns.
1952	Old Camp Fire Orange Ru, CA	1	CDF	Unknown	Died of burns.
1953	Rattlesnake Mendocino NF, CA	15	USFS	Unanticipated evening downslope wind. Local fire behavior	Part of the crew trapped during lunch break on a spot fire, tried to outrun it downhill.
1953	Bonnie Blue, VA	1	Other	Fire burned rapidly up a steep slope.	Firefighter became separated from the crew.
1954	Tunnel No. 6 Tahoe NF, CA	3	USFS	Mono (dry east) winds caused a flare-up at night.	Firefighters were sleeping in unburned area at edge of fire.
1954	Gap Creek, TN	3	Other	Strong wind pushed upslope and it crowned.	Firefighters were caught on slope above fire.
1955	Brickyard, NJ	1	Other	Spot fire in woods.	Fire surrounded driver, he burned to death along Turner's Road.
1955	Sagebrush Malheur NF, OR	1	USFS	Fire was being mopped up in sage and grass. Drafts from a cumulus cloud caused winds.	Firefighter was separated from his crew and tried to outrun fire uphill. Remainder of crew reached a safety zone.
1955	Hacienda, CA	5	Other	Light fuel, high temp., low RH and unstable.	Foreman and crew were in bowl-like area when flashover occurred.
1955	Johnson Fire Prescott, AZ	1	Unknown	Fire danger rating "Extreme," and fire made run in light fuels.	Firefighter tried to outrun fire uphill.
1956	Inaja, Cleveland NF CA	11	USFS	Upslope winds in pm when Santa Ana winds ceased. Fire ran uphill.	Crew working on indirect line in steep canyon. Fire hooked under them before they could reach safety.
1956	East Highlands San Bernadino NF, CA	1	USFS	Upslope wind in light fuel after Santa Anas tapered off at night.	Dozer operator trapped before he could reach safety.
1958	Albert Ranch Angeles NF, CA	1	USFS	Minor flare-up as wind changed at night.	Firefighter trapped ahead of fire.
1958	Stewart Cleveland NF, CA	1	USFS	Minor flare-up in chaparral under weakening Santa Ana conditions.	Firefighter scouting in brush ahead of fire.
1959	Decker Cleveland NF, CA	5	USFS	Downslope afternoon wind stopped and fire came upslope in early evening.	District Ranger and five men on state highway when fire came upslope, caught them in the open.
1959	Gun, Angeles NF CA	1	USFS	Minor flare-up. Fire in front country canyon. Winds changed.	Firefighter was laying hose uphill and was caught by fishhook.
1959	Dry, Sequoia NF CA	1	USFS	Unexpected downslope afternoon wind on east facing slope.	Two firefighters were returning after going downhill for water. Fire came down hill and trapped them there.
1959	Pennington, TX	1	Other	High winds in grassy fuels.	Man on grader got in front of head of fire and was killed.
1959	San Luis Obispo Ru., CA	1	CDF	Unknown	Died of burns.
1960	Cummings Creek Umatilla NF, OR	1	USFS	Unexpected wind change in light fuel on ridge.	Firefighter dropped behind and couldn't keep up with the crew. Fire flared up below them.
1960	Silver City NC	1	Other	Fire in grass.	Firefighter burned to death while attempting to put out grass fire.
1960	FL	1	Other	Light fuels and unanticipated wind change.	Two people on jeep, one ran to safety.
1961	Sierra, Angeles NF, CA	1	USFS	Sudden, unanticipated wind change.	Firefighter unable to gain safety in time.
1961	Silver Creek Nez Perce NF, ID	2	USFS	Fire spotted in extremely steep terrain light fuel under gusty winds near bottom of fire.	Crew went to a chute above spot fire, but all except two left chute when danger was obvious.
1961	Los Posadas Napa Ru, CA	1	CDF	Gasoline used at the fire station.	Died of burns.
1962	Timberlodge Sierra NF, CA	4	USFS	Hot, dry, unstable atmosphere and light fuels.	Tornado-like action from air tanker vortices probably caused fire to blow up and trapped firefighters.
1964	Coyote Los Padres NF, CA	1	USFS	Downslope wind through saddle in early afternoon.	Firefighters panicked and ran to lower part of saddle where temperatures and carbon monoxide concentrations were too high.
1964	Joshua Falls, VA	1	Other	Fire burned up draw toward firefighters.	One firefighter apparently refused to follow and was killed by heat.
1964	Don Pedro Fire Tuolumne Ru, CA	1	CDF	Unknown	Died of burns.
1965	Helker, NC	1	Other	Wind speed increased, Burning in sedge.	Man helping in control burn was caught in wire fence and burned.
1965	Fairview Hollow, KY	3	Other	Fire in light fuels on steep slope.	Firefighters overrun by fire on steep slope.

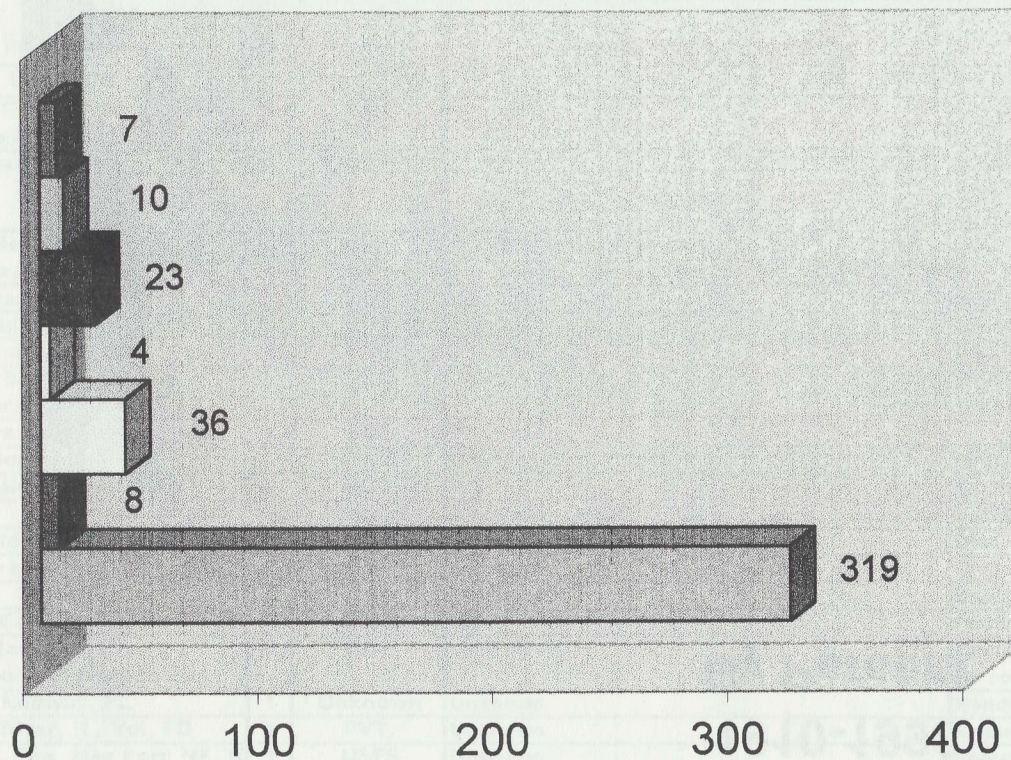
1965	Liebre Fire, Angeles N.F., CA	1	L.A. County	Unknown	L.A. Captain died setting backfire to save engine crew.
1966	Loop Angeles NF, CA	12	USFS	Unanticipated upslope wind in afternoon after Santa Ana winds stopped.	Crew cutting handline downhill in a chimney and part of the crew was unable to reach safety.
1967	Balliff San Bernadino NF, CA	1	USFS	Flare-up at night in light fuel on steep slope,	Firefighter fell trying to escape flare-up.
1967	Sundance Kootenai NF, MT	2	USFS	Fire blew up and made major run toward north under strong wind conditions.	Dozer operator and firefighter were ahead of fire and overrun. They tried to hide under the blade.
1967	Slaughter Apache NF, AZ	1	USFS	Fire became intense in precommercial thinning slash.	Incident Commander tried to outrun fire and couldn't hear warning calls from crew on road.
1967	Windsor, SC	1	Other	Weather dry and windy. Fire was moving fast and erratic in pine.	Firefighter trapped by fast moving head fire in dense smoke.
1967	M\$	1	Other	Small fire, flashy fuels and gusty winds.	Firefighter lost backfire. Died of wounds three days later.
1967	Range, KS	1	Other	Fire in dense grass.	Firefighter panicked and tried to outrun fire.
1967	Ginnis Lake WI, DNR	1	Other	Red pine plantation and oak near lake,	One man on tractor with plow was on a spot fire ahead of the main fire and was caught by fire.
1968	Canyon Angeles NF, CA	8	USFS	Santa Ana weakened and unanticipated wind pushed fire upslope in late morning.	Firefighters tried to outrun fire uphill after flare-up in brush below them.
1968	NC	1	Other	Unknown	A county ranger was suppressing fire. Died of third degree burns.
1968	Ivey, FL	1	Unknown	Heavy wiregrass. Unanticipated wind.	Dozer caught on stump. Operator overrun by fire.
1968	North Carolina #2 NC	1	Other	Unknown	Man, age 84, tried to beat fire with pine tops. Clothes caught fire, was dead when found.
1968	Williams Coronado NF, AZ	1	USFS	High temps, local gusty winds, cumulus clouds near the fire.	Burned trying to outrun fire.
1970	Shasta-Trinity NF, CA	1	USFS	Unknown	Smoke jumper fatality.
1971	Banning (also known as Mack 2) San Bernadino NF, CA	1	USFS	Fire ran upslope in early evening.	Member of engine crew was laying hose downhill from road at night.
1971	Eagle Rock, VA	1	Other	Reburn in rhododendron. Steep slope.	Three men were felling snags and were trapped by fire.
1971	Romero Los Padres NF, CA	4	USFS	Strong "sundowner" (Santa Ana) wind pushed fire downhill in the evening.	Dozer operator and three firefighters burned to death as they hurried downhill.
1972	Warthog Morgan Co., TN	1	Other	Small 24 ac. fire. Wind gusts 20-25 mph. Fire crossed plowed line.	Plow operator trapped and suffocated on bench on upper side of fire.
1973	Bell Valley, CA	1	CDF	Light brush. Weather clear and hot. Gentle rolling topography.	Equipment engineer and firefighter working on flank of fire near a gully. Man ran to road after a flare-up, but died.
1975	Stockton, UT	2	Other	Sagebrush and grass, gentle to rolling topography. Wind changed direction.	Two county deputy sheriffs were working on flank of a small fire when the wind shifted.
1976	Battlement Creek Fire Grand Junction CO, BLM	3	Other	Frost-killed brush slope and narrow chimneys induced extreme fire behavior and uphill runs.	High intensity uphill run occurred during firing operations below a saddle exposed ridgeline.
1976	Buhler, KS	1	Other	Flashover occurred from building up gases on lee side of the wind break.	Fireman tried to outrun fire. An engine also burned.
1977	Cart Creek Ashley NF, UT	3	USFS	Wind changed on steep slope. Small fire.	Fire overtook crew on steep slope in sagebrush grass.
1977	Okanogan NF WA	1	USFS	Steep slopes, ponderosa pine. Fire spotted across canyon and spread rapidly uphill.	Foreman was scouting and fire crossed the canyon below him.
1977	New Jersey #1, NJ	1	Unknown	Shifting winds in 10' grass in a gully. Spot fires.	Firefighters overrun after spot fires experienced.
1977	Bass River, NJ	4	Other	Crown fire during drought conditions.	Crew in converted military truck were trapped when they missed evacuation message.
1977	Honda Canyon Vandenburg AFB, CA	3	Other	Change in wind in dry brush with erratic winds 80 mph. Fire was pushed downhill in light brush by Santa Ana winds.	Fire Chief and assistant trapped while checking fire perimeter. Dozer operator also overtaken while widening fireline. All ran downhill to escape.
1977	Riverside, TX	1	Other	Winds gusting to 45 mph. Fire in heavy grass with strong winds.	Firefighter became trapped after engine became immobilized. Man trapped between fire and truck, fell and burned.
1977	Washington #1 WA	1	Unknown	30 to 40 mph winds with convection currents creating 100' wide 1000' high whirlwind of fire.	Firefighter was trapped as he attempted to extinguish a burning field of grass.

1978	Lost Creek, OR	1	BLM	Slash burning 15 acres. Doug-fir clearcut.	One firefighter was trapped in burning operation and died.
1978	Terrell County, GA	1	Other	Fire in pine/grass pushed by 17 mph winds.	Tractor plow operator became confused in smoke and went into fire.
1979	Oklahoma #1 OK	1	Unknown	Wind shifted, brought fire around crew.	Firefighters drove trucks into unburned grass to attack fire. Victim was caught trying to outrun fire on foot.
1979	Ship Island Salmon NF ID	1	USFS	Rapidly increasing fire.	Crewman and others were in helispot when the fire came. Victim succumbed to smoke and hot air inhalation in fire shelter which had been deployed near a pile of gear. He was not wearing gloves.
1979	Spanish Ranch, CA San Luis Obispo Ru	4	CDF	Sudden change in wind direction trapped crew.	Crew walking on dozed fireline were overrun by fire.
1979	Okefenokee, FL	1	Other	Prescribed fire escaped and became a wildfire with a sudden wind shift.	Tractor plow operator overrun by escaped prescribed fire.
1979	Texas	1	Unknown	Brush, pasture fire.	Firefighter riding on back step of brush fire engine, flanking the fire. Smoke and heat became too intense, engine pulled off fireline, losing firefighter off the back. Firefighter taken to hospital, died 3 days later of thermal burns.
1980	Mack Lack Huron Manistee NF, MI	1	USFS	Prescribed burn escaped into dense pine.	Tractor operator building fireline was swept over by fire. Tried to escape by foot.
1980	Texas #2, TX	1	Unknown	Unknown	Firefighter fatally burned by grass fire.
1981	Merritt Island USFWS Kennedy Space Center, FL	2	Other	Winds shifted and increased to 45 mph. Heavy fuel stressed by drought conditions.	Two person tractor plow crew was overrun by fire, attempted to out run fire.
1981	Elizabeth Angeles NF CA	1	USFS	Unknown	Fire grew on spot fire crew. They escaped opposite chief, then left local department. Chief drove out of fire, but died when he returned to search for departed crew.
1981	Williams Hill, SC	1	Unknown	Variable winds, heavy fuels stressed by drought conditions.	Operator plowing fireline became trapped. He sought shelter under tractor, got hot and tried to run through fire. Second firefighter ran to safety of nearby road.
1982	Canoe Landing, WI Eau Claire Co. Forest	1	Other	Erratic wind conditions. Fire involved timber and brush.	Sudden change in wind direction trapped a tractor plow operator while plowing fireline.
1983	Mechlenburg	1	Unknown	Firewhirl developed in portion of logging debris unit being burned. Spot fire occurred in adjacent plantation.	Prescribed burn in logging debris. Operator of plow caught by firewhirl as he attempted to suppress spot fire.
1983	Nevada #1	1	Carson City District BLM NV	Winds shifted during backfire operation.	Two groups were conducting a backfire operation when winds shifted. Both drove out of the area thinking victim was with the other group. Victim's fire shelter was with one of the engines.
1983	Utica, NY	1	Unknown	Unknown	Using firebroom to extinguish grass fire.
1983	Medina, OH	1	Unknown	Unknown	Extinguishing a grass fire.
1983	Beverly, MA	1	Unknown	Unknown	Advancing a hoseline at a woods fire.
1983	Holland, OH	1	Unknown	Unknown	Extinguishing a leaf fire.
1983	Hope Mill, NC	1	Unknown	Unknown	Working at a woods fire.
1983	Clafin, KS	1	Unknown	Unknown	Extinguishing a grass fire.
1983	Nara Vista, NM	1	Unknown	Unknown	Fighting a grass fire.
1984	Joshua, TX	1	Unknown	Unknown	Operating at a grass fire.
1984	Spicewood, TX	1	Unknown	Unknown	Operating at a brush fire.
1984	Mena, AR Ouachita NF	2	USFS	Unknown	Cutting fireline.
1984	Rainbow Springs Ouachita NF AR	2	USFS	Moderate drought conditions, 30 mph winds, fire burning in pine and brush on 30-50% slope.	A tractor boss and dozer operator were caught in sudden flare-up while traveling down fireline. Abandoned dozer and tried to out run fire.
1984	Sweet Home, OR	1	BLM	Unknown	Working at prescribed burn of 46 acres.
1984	Clear Lake, CA Lake - Napa Ru	1	CDF	Light fuels	Stretching hoseline to fire, no safety gear, direct attack.

1984	Texas #3 TX	1	Unknown	42 mph winds with fire burning in grass and rangeland. Wind suddenly changed direction.	Firefighter took position near the head of the fire to attack with hoseline. Wind changed direction pushing fire towards engines. Firefighter abandoned their engines and tried to out run fire.
1985	Kahneetah Lodge Warm Springs, OR	2	BIA	Fire burning in sagebrush, grass and Juniper.	Three people tried to extinguish fire by beating flames with blankets. It appeared to be under control, fire below them ran. Two ran uphill, flanking perimeter and were over run. One survivor took refuge in the black, severe burns.
1985	Sandlin Bay Columbia, CO	1	Unknown	Fire spotted across line during severe drought conditions	Operator of dozer caught by fire while cutting line.
1985	Golden Gate Ests. FL, DNR	1	Other	Fire developed 3 different heads and blew up as heads drew together in heavy fuels which had been killed earlier by freeze. Winds 20 mph.	Operator of plow unit unaware of adjacent fire heads. Trapped and over run by fire.
1985	Adams Run Summersville, SC	1	Unknown	Drought conditions and 30 mph winds caused erratic fire behavior. Sudden increase in spread rate and intensity.	Tractor operator plowing line caught by rapid fire progress.
1987	Lake Co. Lauder, CA	1	CDF	Unknown	CDF helitack crew member was caught by rapid fire progression.
1988	Blue Hole #6, OR	1	Other	Prescribed burn	Contractor entrapped on prescribed burn. No shelter deployed.
1989	Buckhorn, OH, DNR Wayne-Hoosier NF	1	Other	Late morning wind shift resulted in sudden increase in fire.	No shelter deployed. Possible methane gas implication from nearby mines.
1989	TX	1	Unknown	Unknown	Burned cutting fireline.
1990	Dude Fire Tonto NF AZ	6	State	Hot, dry, unstable atmosphere. Extremely low fuel moisture. Thunder cell formed over convection column, strong gusty winds resulted, pushing fire over all control lines.	State crew was trapped in a shallow draw. Shelters were deployed. Some victims were seen running with their shelters. Poor communication, entire fire using one radio channel. No safety zones accessible to this crew.
1990	California Fire, CA Riverside Ru	2	State	Backfiring from handline. Overrun by fast running fire on moderate to steep slopes in light fuels during heavy shifting winds and extreme temperatures.	Entrapment of state crew (17), shelters were deployed, three others sustained burns.
1990	Wasatch State Park UT	2	State	Winds increased in speed, fire seen spotting.	Entrapment of state crew in Wasatch Mtn. One shelter deployed. Dozer operator and deputy sheriff fatally burned.
1990	Grand Coulee, WA	1	Pvt.	Unknown - volunteer	Asphyxia and burns trying to outrun fire.
1991	Neon, KY	2	Pvt.	Unknown - volunteer	Burned in sudden flare up.
1993	Angeles NF, CA	2	LA County	Spotting above crew. Urban interface fire.	Fire burned over, Some shelter deployment did occur.
1993	Santa Fe NF NM	1	USFS	Major, localized wind event 40-50 mph.	20 acre spot fire on 16,000 acre prescribed burn. Trapped sixteen crew persons.
1994	Augusta, WI	1	Unknown	Grass fields and oak ridges approx. 80 acres. Large gust of wind suddenly increased flame heights from 1 - 2 ft. to 20 - 25 ft in seconds.	Burnover- Firefighters tried to outrun advancing 25' wall of fire on foot and one fell, receiving 3rd degree burns over 50% of body. Died 15 days later. He was wearing turnout gear, coat, helmet, and boots.
1994	Hull Mtn. Fire Medford, OR	1	Contractor, USFS	90 degree temps. RH 22%, oak, madrone, ponderosa pine. Spotting up to one - quarter mile. Fire intensity quickly grew and became a large plume dominated event.	Burn over - dozer - critical fire behavior predictions not available to victim. Individual working alone, no communications, no lookout, no dozer boss. Victim had no wildland firefighter training.
1994	Cedar Fire Brasstown R.D. Chattahoochee, Oconee N.F., GA	1	USFS	Fire exhibited very erratic fire behavior, winds 25+ mph, flame heights reported to reach 80 - 90 feet. Heavy leaf litter.	Victim was pulling of the line with two other firefighters and following a logging road away from fire. The victim was last seen stopping and deploying shelter as if too exhausted to continue on. Burn - over.

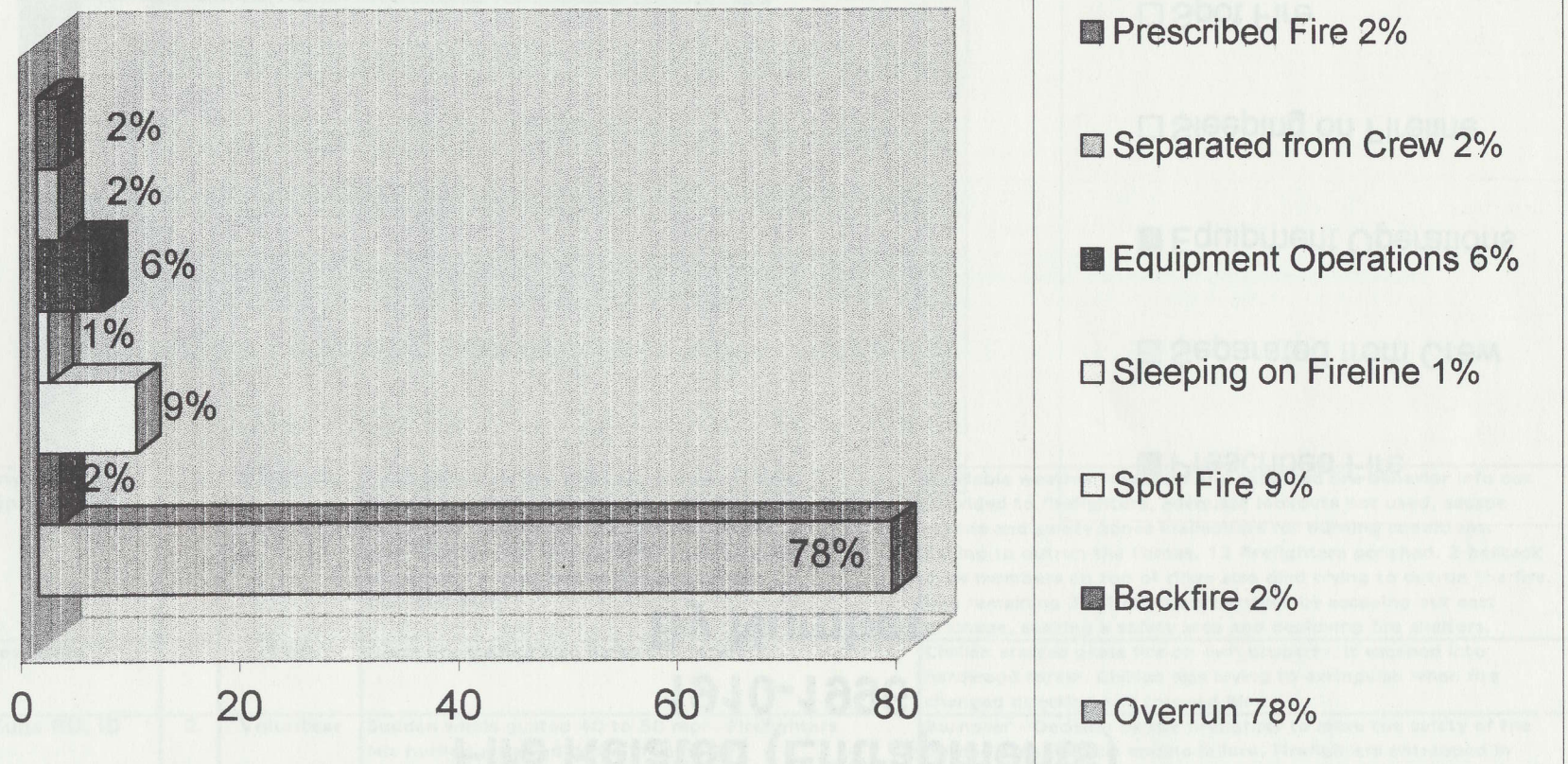
1994	South Canyon Fire Glenwood Springs, CO	14	BLM/USFS	Fuels extremely dry and susceptible to rapid, explosive spread, extreme fire behavior and reburnt in Gamble oak was not recognized. A cold front passed through maximum rates of spread of 18 mph and flames as high as 200-300 feet.	Available weather forecasts and expected fire behavior info not provided to firefighters, adequate lookouts not used, escape routes and safety zones inadequate for burning conditions. Failing to outrun the flames, 12 firefighters perished, 2 helitack crew members on top of ridge also died trying to outrun the fire. The remaining 35 firefighters survived by escaping out east drainage, seeking a safety area and deploying fire shelters.
1994	Tennessee State	1	PVT.	Grass fire leading into hardwood forest.	Civilian started grass fire on own property, it escaped into hardwood forest. Civilian was trying to extinguish when fire changed direction and trapped him.
1995	Point Fire Kuna RU, ID	2	Volunteer	Sudden winds gusted 40 to 50 mph. Firefighters left burned area and drove in to heavy, unburned fuels.	Burnover - Decision by the firefighter to leave the safety of the burned area. Vehicle engine failure. Firefighters entrapped in their vehicle.
1996	Colstrip, MT	2	PVT.	Prairie fire, short grass, fire changed direction.	Three local people fighting fire from truck w/ water and hose. Tire went flat, fire changed direction and overtook them as they tried to outrun the blaze. Burnover. Ages 68, 72
	Total	407			

Fire Related (Entrapments) 1910-1996 By Number



- Prescribed Fire
- Separated from Crew
- Equipment Operations
- Sleeping on Fireline
- Spot Fire
- Backfire
- Overrun

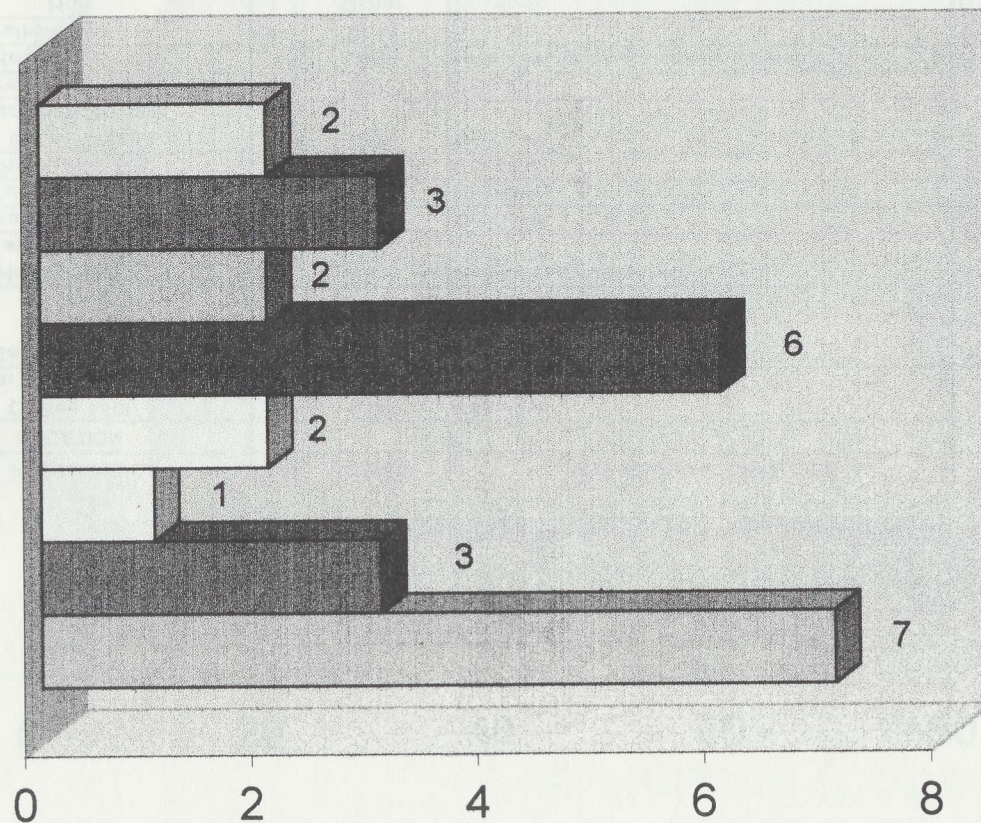
Fire Related (Entrapment) 1910-1996 By Percent



Miscellaneous Injury Related

DATE	FIRE NAME/ LOCATION	No.	AGENCY	FIRE BEHAVIOR OBSERVED	REMARKS
1931	Coffee Mill Mariposa Ru, CA	3	CDF	Unknown	
1945	San Diego Ru CA	1	CDF	Unknown	Died as a result of injuries sustained at a fire. He was talking with dozer operator, caught his pants in the tracks and was pulled between the tracks and fender.
1949	Hells Canyon Payette NF, ID	1	USFS	Fire fanned by high winds.	Firefighter stumbled and fell into fire.
1950	Orange Ru, CA	1	CDF	Unknown	Died of asphyxiation.
1954	Tulare Ru, CA	1	CDF	Unknown	Died as a result of contact with toxic chemicals.
1958	Shasta Ru, CA	1	CDF	Unknown	Died of electrocution.
1963	Mt. Bullion-Madera Mariposa Ru, CA	1	CDF	Unknown	Died of electrocution.
1965	Kyle Fire Riverside Ru, CA	1	CDF	Unknown	
1965	Eldorado NF, CA	1	USFS	Unknown- occurred during nightshift.	Firefighter died of asphyxiation. Staying warm in vehicle.
1966	Fairbanks, AK	1	BLM	N/A	Smokejumper strangled during let - down after practice jump.
1971	Hog	1	Other	Unknown	National Guard drowned while swimming in river near fire camp.
1975	San Benito-Monterey Ru, CA	1	CDF	Unknown	Died of electrocution at a fire.
1979	Orange Ru, CA	1	CDF	Unknown	Died of toxic chemical exposure.
1979	SW, OR	1	Other	Unknown	Reported in Aug.-Sept. 1979, Western Conference Journal.
1979	Central, AK	1	BLM	N/A	Firefighter drowned in creek while swimming at fire camp.
1984	Jackson, CA Amador - El Dorado Ru	1	CDF	Light Fuels	Operating a backpack extinguisher on a grass fire, stepped on powerline.
1985	Midway, FL	1	Unknown	Unknown	Handling a charged hose.
1988	Belle River, IL, Vol. FD	1	PVT.	Unknown	Electrocuted after contact with down powerline.
1989	Curren Mt. Fire, Nez Perc NF, ID	1	USFS	Unknown	Forest Service employee drowned while in fire camp.
1991	Oakland, CA	1	PVT.	Unknown - Oakland Fire Department	Burned after being struck by powerline, wildland urban interface fire.
1991	Collinsville, AL	1	PVT.	Unknown - volunteer	Electrocuted by down powerline.
1991	Missoula, MT	1	USFS	Unknown	Fire training. 5-31-93
1996	Globe, AR	1	USFS	Unknown	Physical training. Crew member died of heat stress during run.
1996	CDF Fire, CA	1	BIA	Unknown	Suicide/hanging. The firefighter left his crew in fire camp and took his own life in the vicinity of the fire. Found 2 days later.
	Total	26			

Miscellaneous Injury Related 1910-1996 By Number



□ Equipment related

■ Training

■ Toxic Chemical Contact

■ Unknown

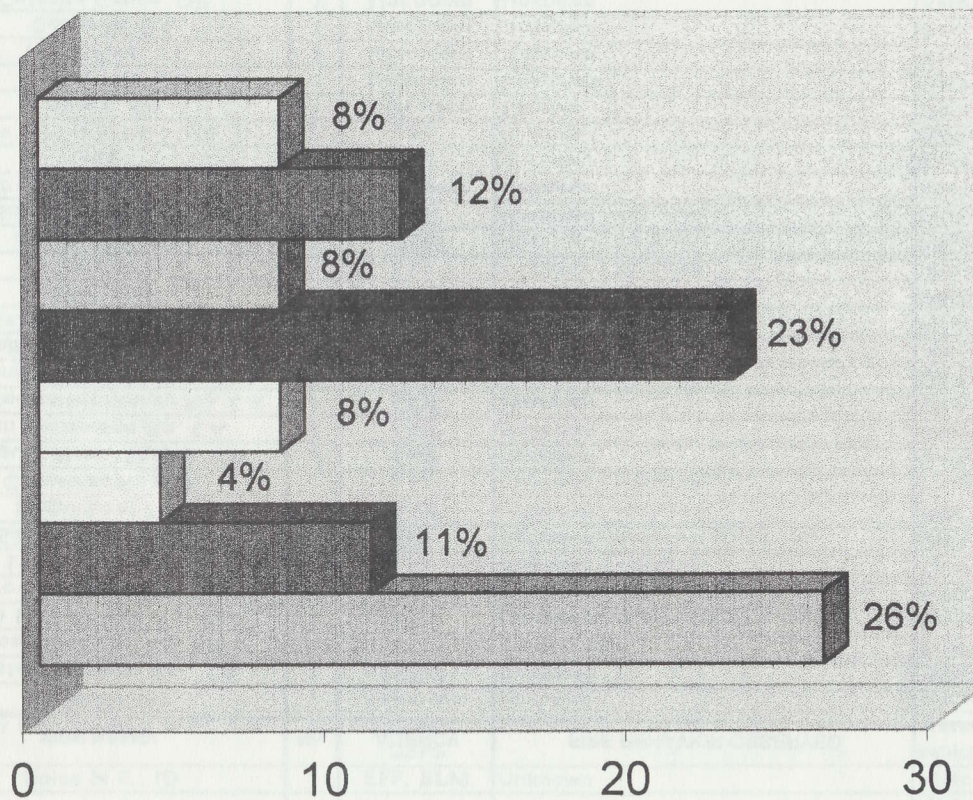
□ Asphyxiation

□ Fell into Fire

■ Drowned

■ Electrocution

Miscellaneous Injury Related 1910-1996 By Percent

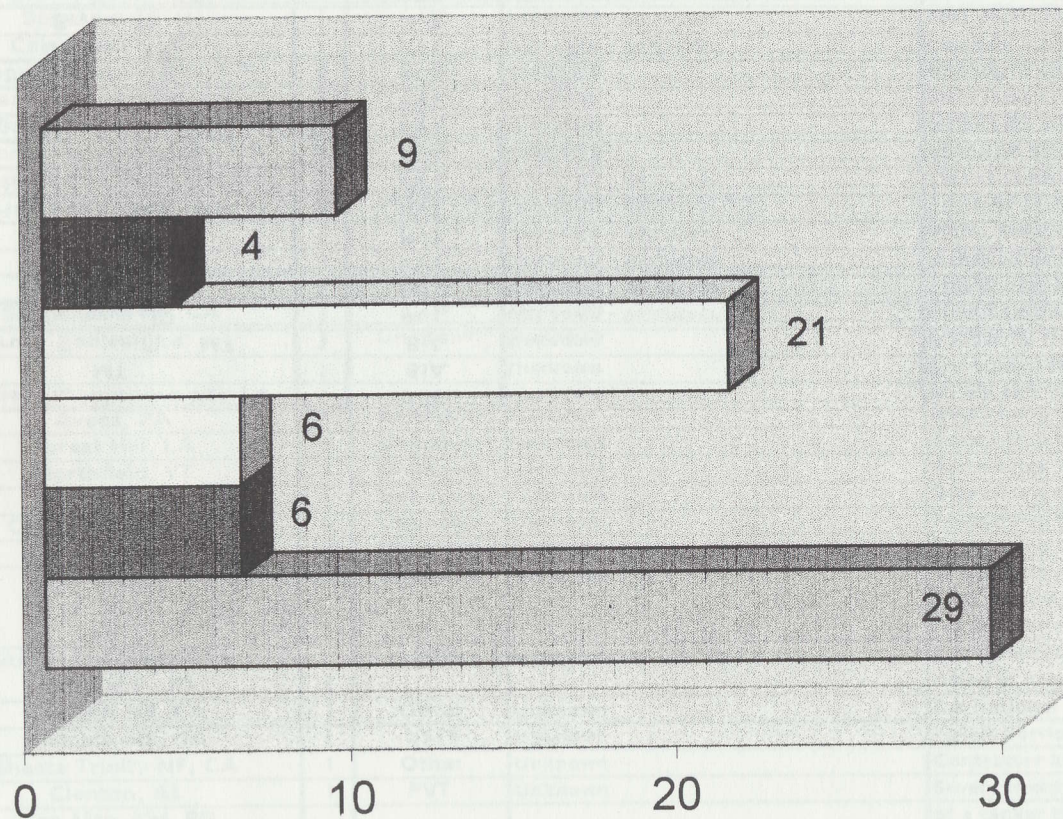


- Equipment related 8%
- Training 12%
- Toxic Chemical Contact 8%
- Unknown 23%
- Asphyxiation 8%
- Fell into Fire 4%
- Drowned 11%
- Electrocution 26%

DATE	FIRE NAME/ LOCATION	No.	AGENCY	FIRE BEHAVIOR OBSERVED	REMARKS
1935	Western Orange Co., CA	1	CDF	Unknown	Vehicle accident on the way to a fire in the woods.
1942	Weed Siskiyou Ru, CA	1	CDF	Truck fire	Firefighter was run over by a vehicle at the scene of a truck fire.
1946	San Luis Obispo Ru, CA	1	CDF	Unknown	Died as a result of an engine rollover in fire.
1949	Oroville, Butte Ru, CA	3	CDF	Unknown	Killed while responding to a fire. Vehicle accident.
1953	Little Ti Fire, CA	1	L.A. County	Unknown	Chief of L.A. Fire Dept. Killed responding to fire.
1954	San Benito Ru, CA	1	CDF	Unknown	Died when engine was struck by train.
1954	Sugar Loaf Fire Calaveras Ru, CA	1	CDF	Unknown	Died when dozer rolled over.
1956	Beegum Fires, Shasta, CA	4	CDF	Unknown	Died in vehicle accident returning to station from fire.
1964	San Bernardino Ru, CA	1	CDF	Unknown	Engine collided with a train.
1967	San Benito Monterey Ru, CA	1	CDF	Unknown	Died in dump truck accident.
1968	Sonoma Ru Briggs Crk., CA	1	CDF	Unknown	Died in a vehicle accident. Engine rolled over.
1969	Campbell Crk. Butte Ru, CA	1	CDF	Unknown	Died in a vehicle accident. Engine rolled over.
1974	Washington	5	Unknown	Grass fire, steep canyon.	5 firefighters riding on the outside of an engine were crushed when engine rolled, while climbing up a steep hill to the head of a grass fire.
1978	Shoshone, ID	1	BLM	N/A	Engine returning from fire went off road and rolled over.
1980	Santa Clara Ru, CA	1	CDF	Unknown	Engine rolled down a steep burning hill. Winching accident.
1980	California	1	Unknown	Unknown	Firefighter was on top of engine operating a hand line and trying to cut off head of fire. Driver, in heavy smoke, drove into gully rolling the engine and crushed firefighter.
1983	Avoca, PA	1	Unknown	Unknown	Responding to grass fire.
1984	Forest Hill, LA	1	Unknown	Unknown	Responding to grass fire. In private vehicle.
1984	Northfield, VT	3	Unknown	Unknown	Responding to grass fire in Roxbury, VT.
1984	Cornelia, GA	1	Unknown	Unknown	Responding to grass fire.
1984	Cottage Grove, OR	1	Unknown	Unknown	Responding to forest fire.
1984	Humansville, MT	2	Unknown	Unknown	Responding to grass fire.
1984	Kentucky	1	Unknown	Grass fire	Firefighters riding on back of engine as driver backed down dirt road, engine passed over rut, bounced off one firefighter who was run over by the rear wheels.
1986	Anderson Creek Fire Boise N.F., ID	4	USFS	Unknown	4 crew members were killed when the army truck they were riding in drove off the road and over turned. -Army deuce & a half.
1987	Klamath NF, CA	1	Other	Unknown	CA National Guard was killed in accident.
1987	Klamath NF, CA	1	USFS	Unknown	Forest Service employee struck by motorcycle.
1987	Shasta Trinity NF, CA	1	Other	Unknown	Contractor killed when his dozer rolled over him on fire.
1987	Clanton, AL	1	PVT.	Unknown	Severe thermal burns resulting from being trapped in the cab of a tanker that rolled over returning from woods fire.
1987	Gap Mtn. Vol. FD				
1987	Douglas, KS, Butler Vol. FD	1	PVT.	Unknown	Fell from extended bumper area of brush vehicle and crushed by wheels.
1987	Kansas	1	Unknown	Grass fire.	Firefighter riding on left front fender of engine using booster hose, was bounced off and run over by front and rear wheels.
1988	Rosholt, WI, Vol. FD	1	PVT.	Unknown	Lost control on curve while driving engine to grass fire.
1988	Munfordville, KY, Vol. FD	1	PVT.	Unknown	Thrown from cab of engine and crushed while responding.

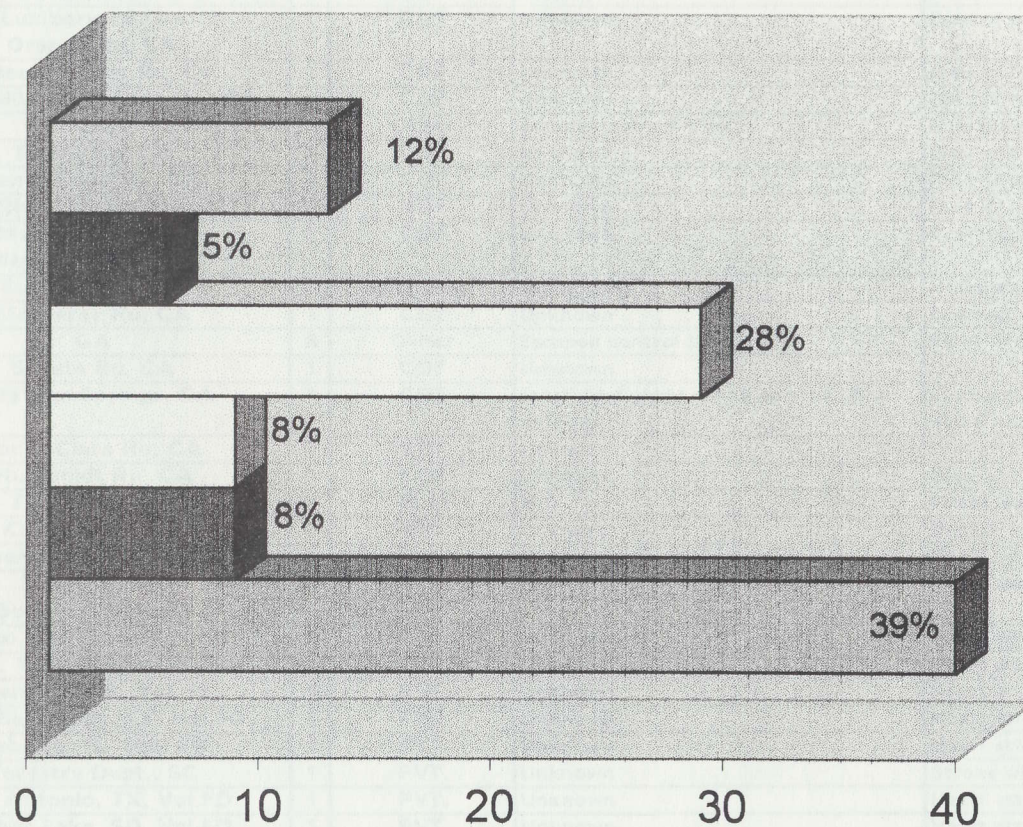
1988	Tampa, FL, Hillsboro Vol. FD	1	PVT.	Unknown	Struck by a truck at an intersection while responding in brush unit.
1988	MT	1	BIA	Unknown	BIA employee killed in vehicle accident.
1988	Brush Coulee Fire, MT	1	BIA	Unknown	Apparatus rolled off hillside.
1988	Bellevue, ID	1	PVT.	Unknown - volunteer	Crushed by over turned tanker.
1988	New Albany, IN	1	PVT.	Unknown - volunteer	Tanker over turned returning from brush fire.
1988	Bushnell, FL	2	PVT.	Unknown - volunteer	Struck by semi-truck while at grass fire.
1989	Noel, MO	1	PVT.	Unknown - volunteer	Motor vehicle accident while responding to timber fire.
1990	Hayre de Grace, MD	1	PVT.	Unknown - volunteer	Collision enroute to station for fire-storm emergency.
1991	Hendersonville, TN	1	PVT.	Unknown - volunteer	Tanker rollover while responding to fire.
1992	Kennewick, WA	1	PVT.	Unknown	Volunteer killed while riding on fire apparatus. Vehicle rolled over.
1992	Mansfield, LA	1	PVT.	Unknown	Apparatus crash.
1992	Caldwell, TX	1	PVT.	Unknown	Apparatus crash.
1992	Crowley, TX	1	PVT.	Unknown	Apparatus rollover.
1992	Menard, TX	1	PVT.	Unknown - volunteer	Collision with tanker responding to grass fire.
1992	Bryan, TX	1	PVT.	Unknown - volunteer	Lost control while responding to grass fire.
1993	Forest Grove, OR	1	ODF.	Unknown - Seasonal Firefighter	Apparatus roll.
1993	Howell, NJ	1	PVT.	Unknown - volunteer	Struck by vehicle,
1994	Alva, OK	1	Volunteer	Firefighter attempting to cut off and suppress a fire blowing up a canyon below them.	Engine over throw - Firefighter riding on back of engine at night in heavy smoke. Driver drove off edge of canyon wall, firefighter on back was thrown off and engine landed on top of him.
1994	Vantmallo, AL	1	Volunteer	Unknown	Water Tender accident.
1994	Lewellen, NE	1	Volunteer	Unknown	Water Tender accident.
1994	Danny Fire Plumas, N.F., CA	1	Contractor, USFS	Unknown	Water Tender Accident - water tender operator involved in a single vehicle accident while enroute to fire. Operator died at scene.
1994	Boise N.F., ID	1	EFF, BLM	Unknown	Motor vehicle accident - An employee of fire cache died following a vehicle accident while delivering cache supplies to a fire.
1995	Claude, TX	2	Volunteer	Unknown	Vehicle/Train
1995	Willard, NM	1	Volunteer	Unknown	Vehicle
1996	Wayne, OK	1	Volunteer	Unknown	Engine rollover, victim crushed.
1996	Bryce Canyon, UT	1	Volunteer	Unknown	Vehicle rollover - Vehicle was off - road responding to a fire.
	Total	75			

Vehicle Related 1910-1996 By Number



- ☐ Riding on Apparatus
- ☐ Collision with Train
- ☐ Equipment rollover on fire
- ☐ Struck by Vehicle
- ☐ Returning from Fire
- ☐ Responding to Fire

Vehicle Related 1910-1996 By Percent



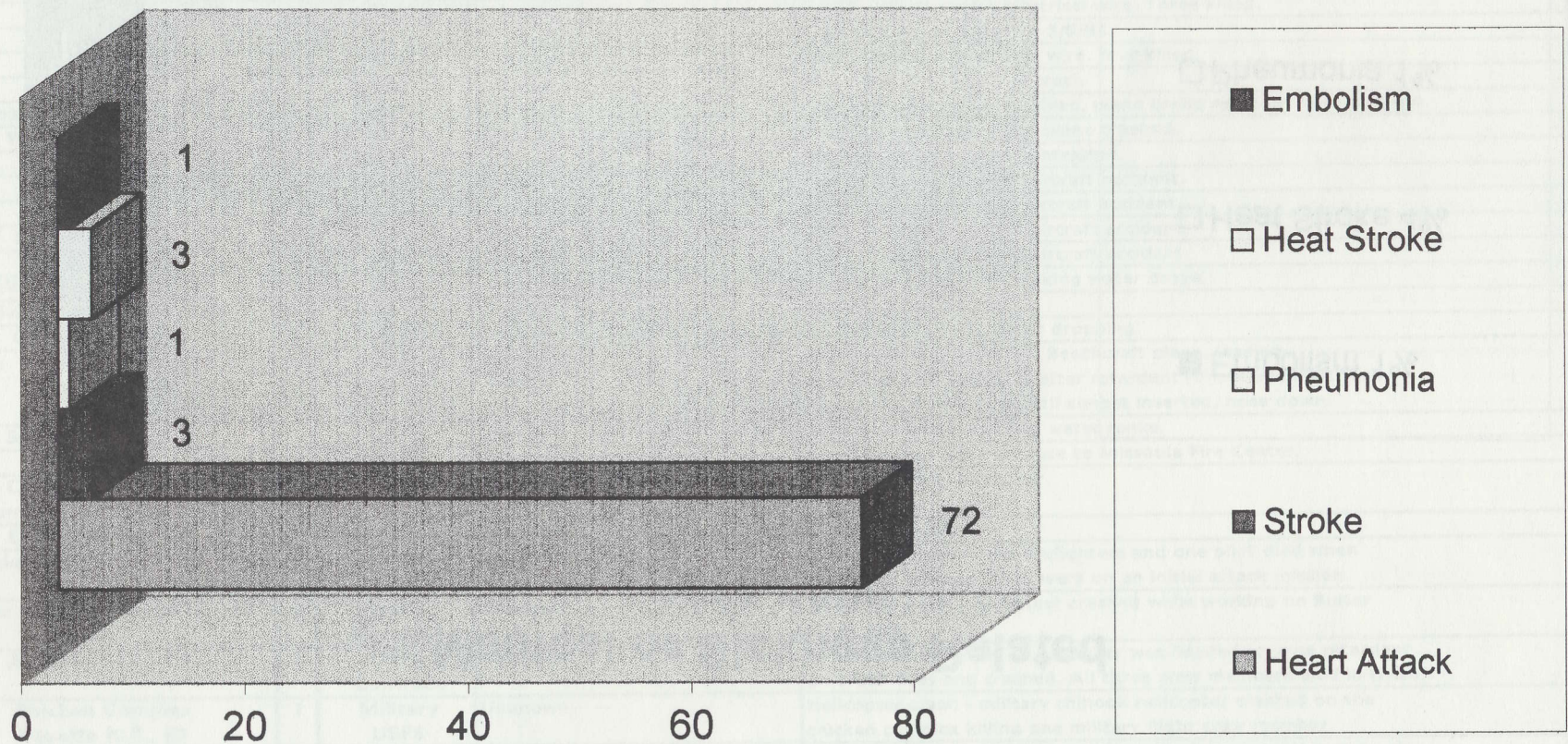
- Riding on Apparatus 12%
- Collision with Train 5%
- Equipment rollover on fire 28%
- Struck by Vehicle 8%
- Returning from Fire 8%
- Responding to Fire 39%

Natural Activity Related - 30

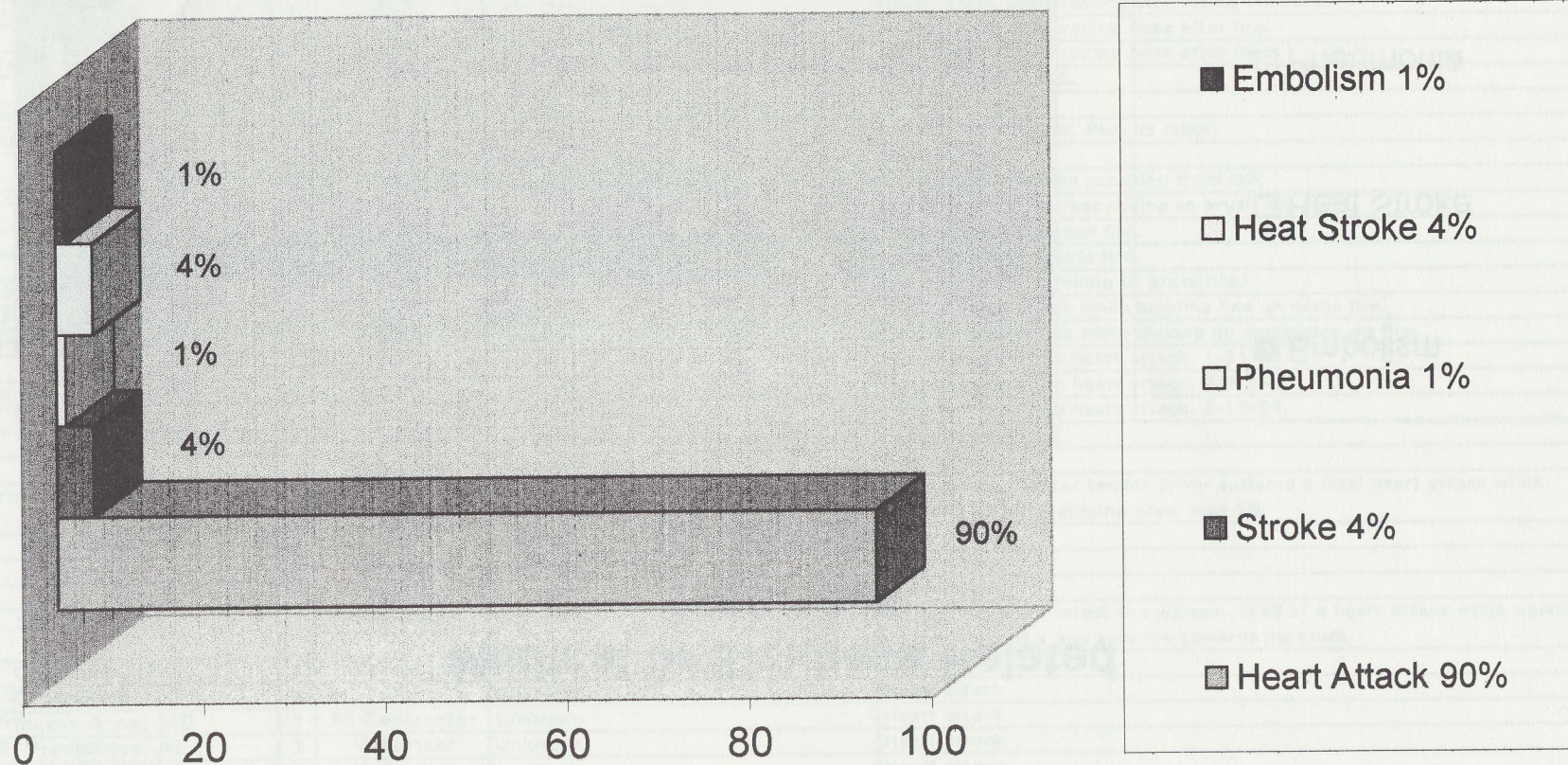
DATE	FIRE NAME/ LOCATION	No.	AGENCY	FIRE BEHAVIOR OBSERVED	REMARKS
1944	Hot Spring, Payette NF ID	1	USFS	Unknown	Man found in sitting position on trail, fire had burned around him. Suspected heart attack or other health problem.
1949	Napa Ru, CA	1	CDF	Unknown	Died of heart attack.
1953	Tulare Ru, CA	1	CDF	Unknown	Died of heart attack while dispatching.
1953	Hill Ranch, El Dorado Ru, CA	1	CDF	Unknown	Died of heart attack on fire.
1956	Humboldt Ru, CA	1	CDF	Unknown	A cook died of a heart attack while on duty.
1956	Sonoma Ranger Unit, CA	1	CDF	Unknown	Died of heart attack.
1959	Stable Fire San Bernadino N.F., ID	1	Unknown	Very hot, dry, unstable atmosphere.	Tried to outrun fire but apparently had a heart attack.
1959	Butte Ru, CA	1	CDF	Unknown	Died after a heart attack, just finishing his shift at fire.
1960	Lumberyard Fire Orange Ru, CA	1	CDF	Unknown	Died of pneumonia contracted on the fire.
1962	Lassen-Modoc Ru, CA	1	CDF	Unknown	Died of heart attack.
1963	Susanville-Lassen-Modoc, CA	1	CDF	Unknown	Died of heart attack.
1963	GA	1	Other	Escaped control burn.	Firefighter overcome by smoke and/or coronary.
1964	Tulare Ru, CA	1	CDF	Unknown	Died of heart attack while dispatching.
1965	Santa Clara Ru, CA	1	CDF	Unknown	Died of heart attack.
1968	Riverside Ru, CA	1	CDF	Unknown	Died of heart attack.
1972	Mud Springs Fire Mendocino Ru, CA	1	CDF	Unknown	Crew supervisor died of heart attack on the fire.
1972	Burnt Ridge Fire	1	Unknown	Unknown	Heart attack, firefighter collapsed on the fireline.
1973	Monterey Ru, CA	1	CDF	Unknown	Lookout died of heart attack.
1973	GA	8	Other	Escaped control burn.	Eight firefighters were shown to have died of heart attacks. 3 over 70 yr..
1978	Shasta Ru, CA	1	CDF	Unknown	Died of heat stroke.
1979	Saratoga Springs, CA	1	CDF	Fresh firefighter on 10 ac brush fire in June.	Firefighter either overcome by carbon monoxide or had a heart attack.
1979	Santa Clara Ru, CA	1	CDF	Unknown	Died of heat stroke.
1982	Humboldt Ru, CA	1	CDF	Unknown	Died of heart attack while walking his crew to fire.
1983	Ft. Yukon, AK	1	BLM	N/A	Firefighter died of heart attack while in fire camp.
1987	Klamath NF, CA	1	BIA	Unknown	Died of heart attack.
1987	Inverness, FL, Vol. FD	1	PVT.	Unknown	Heart attack while pulling hose at a brush fire.
1987	Summit, MS Sunnyhill Vol. FD	1	PVT.	Unknown	Heart attack while responding to fire.
1987	Cisco, TX, Cisco Vol. FD	1	PVT.	Unknown	Heart attack after operating at a grass and brush fire.
1987	Azle, TX, Spillway Vol. FD	1	PVT.	Unknown	Heart attack at a grass fire.
1987	Swansea, MA, Vol. FD	1	PVT.	Unknown	Heart attack at a brush fire.
1987	East Bernstadt, KY, Vol. FD	1	PVT.	Unknown	Heart attack at a woods fire.
1988	Sebring, FL, Vol. FD	1	PVT.	Unknown	Heart attack while responding.
1988	Forestry Dept., SC	1	PVT.	Unknown	Stroke while issuing a summons at a grass fire.
1988	San Antonio, TX, Vol. FD	1	PVT.	Unknown	Heart attack while returning from grass fire.
1988	Timber Lake, SD, Vol. FD	1	PVT.	Unknown	Heart attack while using hand tools at grass fire.
1988	Birmingham, AL	1	Other	Unknown	Heat stroke while checking flanks in woods fire.
1988	Hood River, OR, Vol. FD	1	PVT.	Unknown	Heart attack while pulling hose.
1989	Wenatchee NF, WA	1	USFS	Unknown	Died of heart attack in camp.
1989	Ghent, NY	1	PVT.	Unknown - volunteer	Heart attack while responding to fire.
1989	Wood Lake, MN	1	PVT.	Unknown - volunteer	Heart attack while setting up water tank.

1989	Bent, NM	1	PVT.	Unknown - volunteer	Heart attack at brush fire.
1989	Conneaut Lake, PA	1	PVT.	Unknown - volunteer	Heart attack while resting after using fire rake.
1989	Athens, AL	1	PVT.	Unknown - volunteer	Heart attack while rolling hose after fire.
1989	Jacksonville, AR	1	PVT.	Unknown - volunteer	Heart attack while rolling hose after fire.
1990	AK	1	USFS	Unknown	Died of heart attack.
1990	Snowshoe Fire, Malheur NF, OR	1	USFS	Unknown	Died of stroke.
1990	Shasta Trinity NF, CA	1	CDF	Unknown	Died of heart attack. Pick up labor.
1990	Wellston, OK	1	PVT.	Unknown-volunteer	Heart attack.
1990	Los Padres NF, CA	1	USFS	Unknown- Ynez Fire	Pulmonary embolism resulting from fall.
1990	Quincy, FL	1	PVT.	Unknown- volunteer	Heart attack while responding to brush fire.
1990	Wichita, KS	1	PVT.	Unknown- Sedgwick Co. Fire Dept.	Heart Stroke at a grass fire.
1991	Marysville, KS	1	PVT.	Unknown - volunteer	Heart attack at prairie fire.
1991	New Buffalo, MI	1	PVT.	Unknown - volunteer	Heart attack responding to grass fire.
1992	Fond Du Lac, WI	1	PVT.	Unknown	Died of heart attack while building line on grass fire.
1992	Glenwood Springs, CO	1	PVT.	Unknown	Died of heart attack while picking up equipment on fire.
1993	Lulkin, TX	1	PVT.	Unknown	Volunteer died of a heart attack. 1-31-93
1993	Monhiggan Lake, NY	1	PVT.	Unknown	Volunteer died of a heart attack. 7-9-93
1993	Florahome, FL	1	PVT.	Unknown	Volunteer died of a heart attack. 8-15-93
1994	Tuskegee, AL	1	USFS	Unknown	Heart attack
1994	Trendon, MI	1	Volunteer	Unknown	Heart attack
1994	Tyee Fire Wenatchee, N.F., WA	1	Contractor, USFS	Unknown	Heart attack - Water tender driver suffered a fatal heart attack while on stand - by in a staging area. Age 58.
1995	Tennessee	1	TSF	Unknown	Heart attack
1995	Era, TX	1	Volunteer	Unknown	Heart attack
1995	Malo, WA	1	Volunteer	Unknown	Heart attack
1995	So. China, ME	1	Volunteer	Unknown	67 year old town forest fire warden. Died of a heart attack while walking up the plank of a one acre fire towards his truck.
1995	Gallupville, NY	1	Volunteer	Unknown	Heart attack
1995	GreenBriar, TN	1	TSF	Unknown	Heart attack
1995	Princess Anne, MD	1	FS/Contractor	Unknown	Heart attack
1995	E. Providence, AL	1	Volunteer	Unknown	Heart attack
1996	Mariette, OK	1	Volunteer	Unknown	Heart attack
1996	Castle, OK	1	Volunteer	Unknown	Heart attack
1996	Golden City, MO	1	Volunteer	Unknown	Heart attack
1996	Fruitland, UT	1	Volunteer	Unknown	Heart attack
	Total	76			

Medical or Sickness Related 1910-1996 By Number

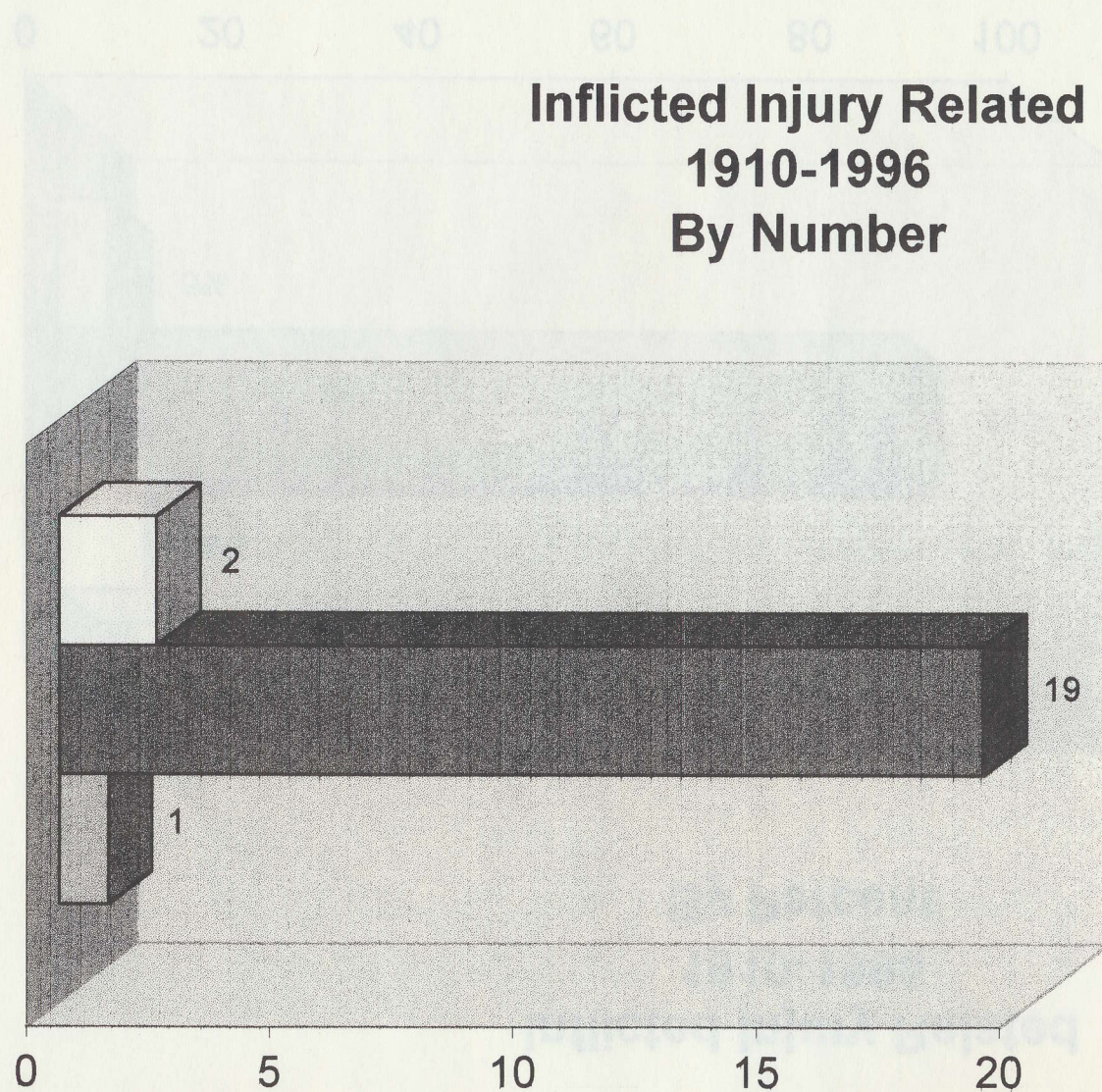


Medical or Sickness Related 1910-1996 By Percent



DATE	FIRE NAME/ LOCATION	No.	AGENCY	FIRE BEHAVIOR OBSERVED	REMARKS
1959	Sequoia NF Tule River RD, CA	1	USFS	Unknown	Aircraft crash. Fire in canyon between rock bluffs. Pilot volunteered to dive low and drop in hazardous condition.
1960	Sequoia NF, CA Tule Indian Reservation	1	CDF	Unknown	Aircraft crash. Airtanker came over ridge for drop and clipped ridge. Reservation protection provided by USFS.
1961	Sequoia NF, CA Cannell Mdw RD	3	USFS	Unknown	Helicopter crash (Bell 3-GB). Reconnaissances of fire, Crashed returning to base, did not have fuel.
1961	Higgins Ridge, UT	1	UT State Employee	Unknown	Walked into main rotor.
1965	McCall, ID	2	USFS	Unknown	A jump plane crashed with spotter and pilot aboard. Occurred on a paracargo run after jumpers were dropped.
1967	Livingood, AK	2	BLM Contractors	Unknown	B-25 crash due to late pull-out during retardant drop on fire. Airtanker crash.
1973	Tuolumne - Calaveras Ru, CA	1	CDF	Unknown	Died in helicopter crash.
1976	Grand Junction, CO	1	BLM	Unknown	B-26 contract pilot killed on retardant run.
1978	San Luis Obispo Ru, CA	1	CDF	Unknown	Died in the crash of "Airco 53".
1981	Paul, ID	3	BLM	Unknown	C-182 aircraft struck electrical wire. Three killed.
1983	R8	1			B-26 hit tree on drop run 3/5/83.
1986	Montrose, CO	4	BLM	Unknown	SA-3158 struck electrical wire, four killed.
1987	CA	1	CDF	Unknown	Pilot killed in S-2 tanker crash.
1987	Shasta Trinity NF, CA	3	USFS	Unknown	Pilot and crew of C-119 killed, plane broke apart on retardant run.
1987	White Sands, NM	2	PVT.	Unknown - US Army- contract	Dropping retardant when plane crashed.
1988	WY	1	Other	Unknown	Aircraft accident killed contractor.
1988	WA	2	Other	Unknown	Two Canadians killed in aircraft accident.
1988	WY	1	BLM	Unknown	BLM employee killed in aircraft accident.
1988	Sequoia NF, CA	1	USFS	Unknown - Havilah Fire	USFS employee killed in aircraft accident.
1988	OR	1	USFS	Unknown	USFS employee killed in aircraft accident.
1988	Wenatchee NF, WA	2	DNR	Unknown - contractor- Dinkleman	Helicopter crash while making water drops.
1990	Colville Reservation, WA	1	Other	Unknown	Helicopter contractor.
1990	Olympic NF, WA	2	USFS	Unknown- contractor-Wynoochee	Aircraft crash while water dropping.
1991	Ziplock Fire Cibola NF, NM	1	USFS	Unknown	Regional lead plane pilot, Beechcraft plane, leading air tanker 119 pulled up after retardant run, started left turn and continued roll left until almost inverted, nose down.
1991	Stanislaus NF, CA	1	USFS	Unknown - contractor-Pine Fire	Helicopter crash lowering water tanks.
1991	MT	2	USFS	Unknown - contractors	Aircraft crash while enroute to Missoula Fire Center.
1992	Calaveras Co., CA Tuolumne - Calaveras Ru, CA	1	CDF	Unknown	Pilot killed. S-2 Airtanker.
1992	El Dorado NF, CA	2	Contract	Unknown	Aircraft accident.
1994	Guide Fire Gila, N.F., N.M.	8	USFS	Unknown	Helicopter crash - Two firefighters and one pilot died when helicopter crashed. They were on an initial attack mission.
1994	Bulter Cr. Fire, Missoula, MT	2	USFS Contract	Unknown	Airtanker crash - Airtanker crashed while working on Bulter Creek Fire.
1994	Angeles, N.F., CA	3	USFS Contract	Unknown	Airtanker crash - C-130 airtanker was headed to drop retardant on brush fires and crashed. All three crew members died in crash.
1994	Chicken Complex Payette N.F., ID	1	Military USFS	Unknown	Helicopter crash - military chinook helicopter crashed on the chicken complex killing one military flight crew member.
1995	Romona, CA	3	FS, Contractor		Aircraft accident - two fire fighting planes involved in a mid - air collision. Aircrafts were returning from the Butterfield Fire and in the process of landing.
	Total	62			

DATE	FIRE NAME/ LOCATION	No.	AGENCY	FIRE BEHAVIOR OBSERVED	REMARKS
1946	Council, ID	1	USFS	Unknown	Jumper fatality. Was killed by snag. 7-5-46
1959	Scott Fire, El Dorado Ru, CA	1	CDF	Unknown	Killed by a rolling rock.
1960	Siskiyou NF, CA	1	USFS	Unknown	Snag fell on firefighter.
1961	Clearwater NF, ID	1	USFS	Unknown	Smoke chaser fire. Firefighter killed by snag.
1971	Banks, AR	1	Other	Medium fuels, mod. winds, very high FDR.	Man was knocked unconscious by falling tree. He fatally burned.
1972	Harris Ridge, ID	2	Other	Steep, rocky terrain, dry fuels and thunderstorms caused squirrely winds.	Two men on fireline. A rolling log hit them and they rolled into the fire, dying of suffocation.
1985	5 Mi. Fire, Wenatchee NF, WA	1	BIA	Unknown	Struck by snag.
1986	Ace Creek Fire	1	?	Unknown	Struck by snag.
1987	Hamm Fire, Stanislaus NF, CA	1	USFS	Unknown	Killed by snag he was falling.
1987	Six Rivers NF, CA	1	Other	Unknown	CCC killed when snag struck vehicle.
1987	Okanogan NF, WA	1	Contract	Unknown- Reynolds Creek Fire	Contractor killed by tree he fell.
1988	Fayetteville, NC	1	Pvt.	Unknown	VFD employee killed by falling tree.
1988	Shoshone NF, WY	1	BLM	Unknown- Clover Fire	Killed by falling tree.
1988	MT	1	Other	Unknown	Killed by a falling tree.
1988	Flathead NF, MT	1	BIA	Unknown- Red Bench Fire	Struck by falling snag.
1989	CA	1	CDF	Unknown	Killed by a falling tree.
1989	Los Padres NF, CA	1	State	Unknown - CA inmate crew	Killed by snag.
1990	Mendocino NF, CA Recer Fire	1	CDF	Snag patch. Crews were warned of snag problems, but not aware of full extent.	Died of head injury inflicted by snag. Tree struck firefighter as he was packing hose up fireline.
1991	Routt NF CO	1	USFS	Small fire, completed line.	Two firefighters had just completed lining a small fire, they were taking a rest on the line, a snag fell out of the perimeter, striking one man on chest.
1992	Boise NF, Cascade, ID	1	USFS	Unknown	Killed by falling tree on fireline.
1992	Pryor Fire Willamete NF, OR	1	State	Unknown	Killed by falling tree.
	Total	22			



□ Snag Felling

■ Snag

■ Rolling Rocks

Inflicted Injury Related 1910-1996 By Percent

