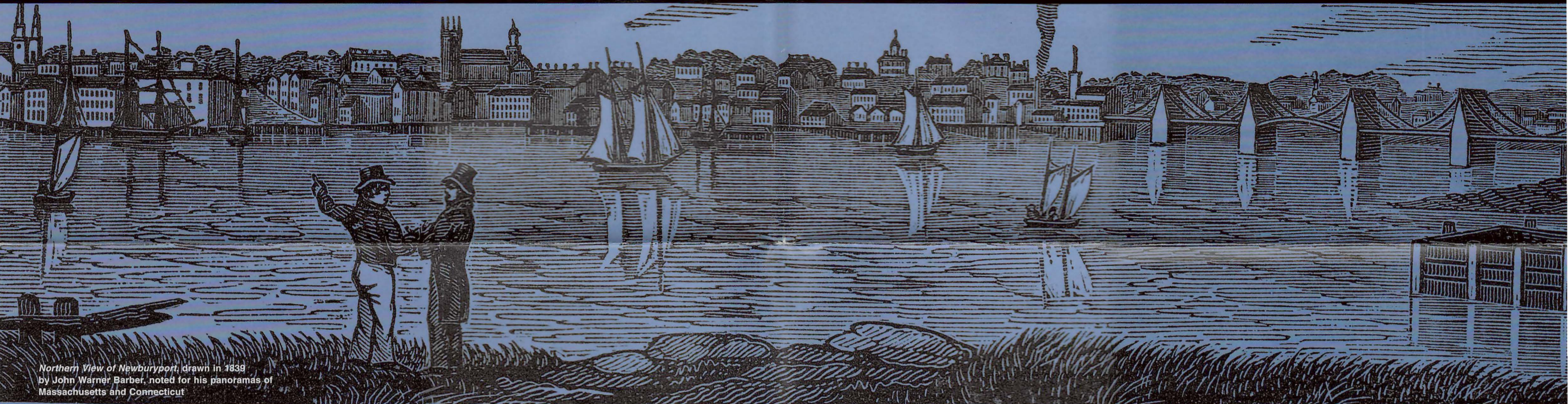


Essex National Heritage Area

Essex National Heritage Area
Massachusetts

National Park Service
U.S. Department of the Interior



Northern View of Newburyport, drawn in 1839 by John Warner Barber, noted for his panoramas of Massachusetts and Connecticut

1620 Europeans arrive in Massachusetts; colonies established at Plymouth, Cape Ann, Salem, and Boston.	1630 "Sacred cod" – the gold of the Cape Cod and Newfoundland fishing banks – ensures the economic survival of the young settlements.	1692 The "witchcraft delusion" results in the executions of nineteen innocents in Salem.	1730 The growth of coastal, West Indies, and overseas trade expands; shipbuilders, merchants, and fishermen build fortunes from the sea.	1775 Salem citizens bar British soldiers from searching the town for arms; the American Revolution soon begins in Lexington and Concord.	1790 International maritime trade makes Salem the sixth largest city in the country and the richest per capita in the nation.	1812 Salem privateers and the U.S. frigate <i>Essex</i> , built in Salem, prove the bane of the British Navy in the War of 1812.	1830 The Industrial Revolution comes to the banks of the Merrimack River; textiles and shoes of Lynn, Lawrence, and Haverhill are marketed worldwide.	1912 The Bread and Roses strike of textile workers in Lawrence leads to nationwide labor reforms.	1950 Factories move South toward cheap labor and weaker unions; the textile industry grinds to a halt.	1970 Technology brings new life to the industrial corridor; the e-commerce revolution begins.	1996 U.S. Congress establishes the Essex National Heritage Area.
--	---	--	--	--	---	--	---	---	--	---	--

A Bridge to America's Past

Designated in 1996 by the U.S. Congress, the Essex National Heritage Area is the five hundred square-mile portion of eastern Massachusetts that lies north of Boston. Quintessentially New England in character, the thirty-four cities and towns of the region vividly capture the experience of American history. Native sites, colonial settlements, maritime communities, and the roots of the Industrial Revolution are further enhanced by the area's value as a natural environment. Indeed, the beauty of the Essex National Heritage Area provides a stunning backdrop for its remarkable history as a place of human habitation for more than fifteen thousand years.

Along the jagged Atlantic shore are the estuaries that first attracted native tribes and later provided harbors for European settlers. These harbors became the ports that established the region's leadership in the maritime industries and international trade. Through these gateways, raw materials were exported around the world and exotic goods were brought to American markets. Equally important to the region's history is the Merrimack River, a hunting and fishing place for the Naumkeag people and a transportation highway for the colonists. Linking interior and coast, the river played a leading role in the Industrial Revolution as textile mills and leather factories transformed its banks.

Between the shore and the river valleys lie the agrarian roots of the region. Laced by stone walls marking pastures, orchards, and churchyards, these pastoral settings include forests, wetlands, and wildflower meadows. Within the diverse landscapes of the Essex National Heritage Area are hundreds of sites where the visitor can discover the story of the emerging nation and its growth into a world power. Colonial homes, shipyards, sea captains' mansions, and shoe and textile mills provide a sense of the ways the land and the ocean shaped cultural history. Undeniably, the spirit of New England abides today in every corner of the Essex National Heritage Area.

From Adventure...

Early Settlement

For centuries before colonists came to the New World, the native people of Massachusetts lived in harmony with the seasonal cycles of their natural surroundings. In scores of villages and encampments, the first Americans – perhaps 200,000 in New England – fished and farmed near the ocean in summer and hunted in the forests in winter. When European explorers arrived in the early 1600s, bringing smallpox and influenza, 95 percent of Native Americans died in epidemics from 1615 to the 1630s. By the time English settlers arrived in 1620, they faced little resistance from the natives.



Roger Conant (1592-1679) was a nonconformist Puritan who favored the establishment of the English church in the colony. Despite his disagreements with the Separatists, he was recognized as a leader and appointed in 1625 as agent for the founding Dorchester Company of Western Adventurers. When their fishing station at Stage Fort Point at Cape Ann failed, Conant led the settlers to the native fishing place at Naumkeag and founded the town of Salem. He served for the remainder of his life as selectman, juror, and surveyor and was known for his intelligence, personal perseverance, and excellence in diplomacy and negotiation.

Life proved hard for the newcomers, however. The Dorchester Company, which had established a fishing station at Cape Ann, struggled for survival between the ocean and the wilderness. By 1626 the Company headed south to the native village at Naumkeag – "the fishing place" – on the banks of the North River. With help from the natives and an influx of English settlers, salvation came. Timber-framed houses took shape on the land, while new shallops collected the codfish that was a staple food. The Puritans renamed the place Salem, from the Hebrew word *shalom*, meaning "peace."

In 1630 Salem, the first permanent settlement of the Massachusetts Bay Colony, lost its position as capital when Governor Winthrop decided that Boston provided more farmland and a better harbor. While Salem survived as a trading post, supplying corn, cod, and timber to settlers, new communities developed along the shore and in the frontier. Throughout the century, industrial sites, such as the ironworks at Saugus, were developed to meet the needs of the colonists, and the forest was cleared to provide agricultural lands. By the mid-eighteenth century, self-government, expanded trade, and a diversity of arts and occupations ensured that the new Americans would prevail over coming adversities.



The House of the Seven Gables, Salem

to Independence...

The Maritime Era

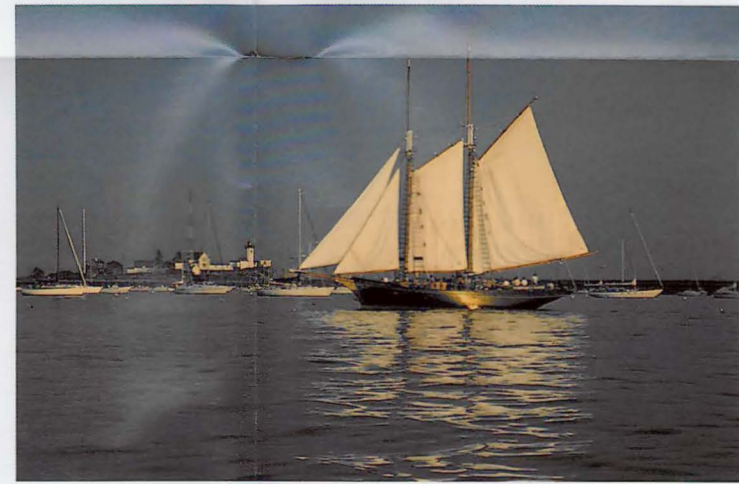
By the 1770s coastal Massachusetts north of Boston had a dizzying array of activities centered on the tremendous opportunities the Atlantic Ocean and the Merrimack River provided to its inhabitants. Searching for new markets to assure continued prosperity, Salem, Marblehead, Gloucester, Essex, Newburyport, Amesbury, Haverhill, and Salisbury expanded their efforts in fishing and trade. Soon their wharves rang with the sounds of shipbuilding, and their sloops and schooners left the docks for voyages to the southern colonies and the West Indies. A flotilla of Amesbury dories were used to set trawl lines on the Grand Banks, as Cape Ann mariners established a tradition of coastal fishing.



Elias Hasket Derby (1739-99), head of one of Salem's most prominent families, was a shipowner and merchant who became Salem's wealthiest citizen – and perhaps America's first millionaire – through expansion of his fleet's European and West Indies trade routes. Having profitably survived the Revolution by amassing a fortune through privateering, Derby refitted his privateers as merchantmen and sent them around the Cape of Good Hope to Calcutta, Bombay, Canton, and Manila. Respected as an innovator and shrewd businessman, "King" Derby had a thorough understanding of shipbuilding and overseas trading and an intuitive knack for judging well-proportioned and properly fitted vessels.

Trading New England cod and lumber and Virginia tobacco and horses for West Indies molasses and rum, fearless sea captains, some hardly older than boys, soon set sail for Europe, Africa, and the Far East. There they traded their Caribbean cargo for Irish linen, French wines, Chinese silks and porcelain, Indian cotton, and African ivory, ebony, and gold dust. Some also engaged in the slave trade. Returning home with holds redolent of coffee, tea, pepper, cinnamon, and cloves, Essex County's captains were well rewarded by their owners, some of whom were among America's first millionaires.

Known as the Venice of the New World, Salem was by 1790 the sixth largest city in the nation and the richest per capita. At the peak of the maritime era in 1807, Salem was home port to 200 vessels, and its merchants' flags flew in ports in every part of the globe. Essex shipyards launched more than 4,000 wooden vessels that sailed to nearly every continent, and 150,000 Grand Banks dories built along the Merrimack contributed to the growth of Gloucester's largest fishing fleet in the world. Essex County's merchants, shipwrights, and mariners had secured the region's place in history.



Schooner Thomas E. Lannon, Gloucester

and Opportunity

The Industrial Revolution

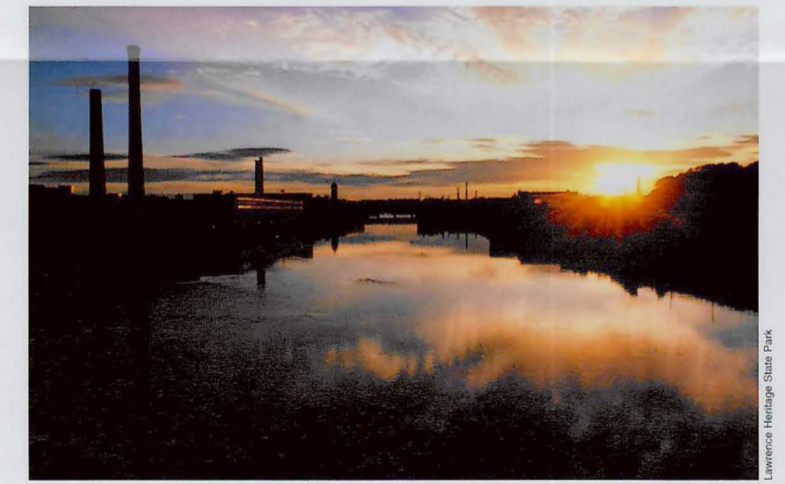
The late nineteenth century changed Salem and its neighbors forever. The rocky coast and shallow harbors of the region prevented access to new deeper-hulled vessels, so Essex County entrepreneurs looked for innovative ways to invest the fortunes they amassed during the maritime era. Home-based handicrafts, such as textile making and shoemaking, were ripe for development into workshop- and factory-sized businesses, and traditional local industries, such as the leather tanneries at Peabody and the fulling mills in Andover, stood ready to embrace the Industrial Revolution.



Consiglia Rocco (1898-1991), like mill worker Maria Tomacchio pictured above, was a spirited fourteen-year-old Italian immigrant living in Lawrence when the Bread and Roses labor strike began on January 11, 1912. The uprising of 25,000 textile workers began over a pay cut that equaled the cost of five loaves of bread – a reduction that for some meant the difference between survival and starvation. Consiglia and her mother transformed their home into a planning headquarters, soup kitchen, and day care center for the children of protesting mothers. Their strike-support system served as a model for other labor strikes and encouraged workers to unite against unfair treatment.

Small workshops and one-process mills that developed between 1820 and 1850 gave way to fully mechanized, huge factories that employed thousands of immigrant workers. The faces of Essex County literally changed as the predominately English population made room for workers from dozens of countries. Sewing machines, massive looms, and new ways of harnessing the enormous waterpower of the Merrimack River led to the creation of planned cities such as Lawrence, where a system of canals and mills made the city the world's largest producer of worsted wool cloth by the turn of the twentieth century. The city of Lynn gained fame as the world's center for the manufacture of women's shoes, and Haverhill became known as the "Queen Slipper City," renowned for its high standards of quality.

Standards of living for the immigrants were not quite so high, however. Low wages and poor working conditions gave rise to the labor movement, when conflicts between management and employees led to labor strikes. The first occurred in Lynn in 1860, and the most famed was the "Bread and Roses" strike in Lawrence in 1912. The focus of the country's attention on the rights of workers helped the development of labor unions, and conditions improved for workers nationwide.



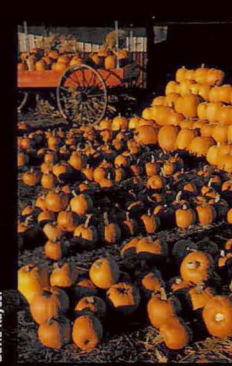
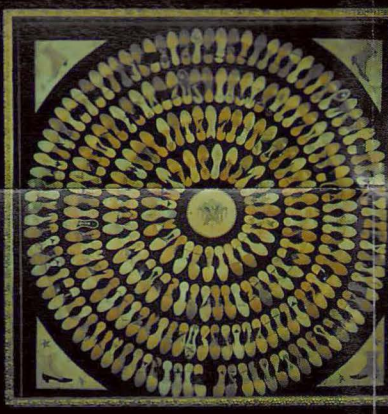
Merrimack River, Lawrence

Regional Highlights: Contemporary Links to History

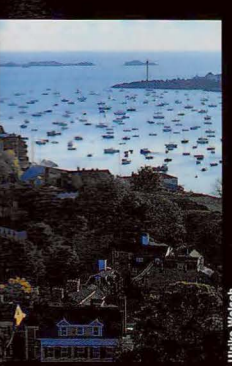
The passage of the past four centuries can be experienced through visits to the sites pictured here, as well as to hundreds of other sites throughout the Essex National Heritage Area. Exploration of the region's museums, historic districts, village greens, harbors, mills, and farms provide glimpses into the cultural and economic heritage of the area.



Shops on Inn Street, Newburyport



Cherry Hill Farm pumpkin display, Amesbury



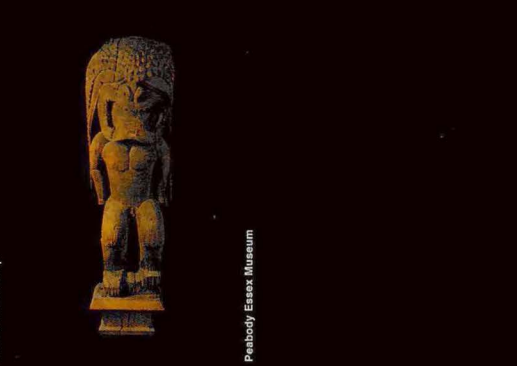
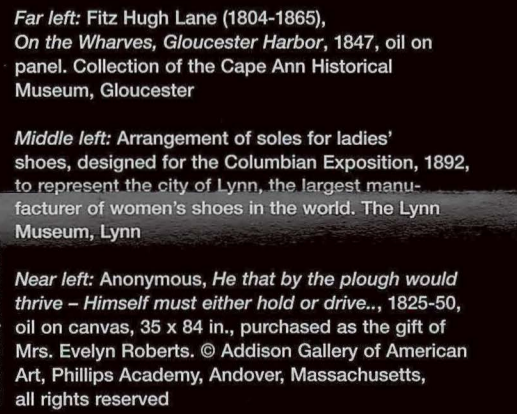
Sunrise, Marblehead Harbor



The Fisherman's Memorial Statue, Gloucester



Surf Dory, from Lowell's Boat Shop, Amesbury



Kuka'ilimoku, late eighteenth- early nineteenth-century Hawaiian breadfruit wood carving, Peabody Essex Museum, Salem

Essex National Heritage Area

Exploring the Region

Marshlands and Beaches



At the edge of the Atlantic lies one of the region's most pristine landscapes, extending today from Salisbury to Gloucester. Here the visitor is drawn to the quiet places where shorebirds and waterfowl seek refuge. At the Crane Estate in Ipswich, unspoiled woodlands tumble toward the four-mile stretch of sand that protects the peaceful estuaries from the wind and tides. Nearby, the wild nature of Plum Island and the Parker River National Wildlife Refuge is revealed in their sensitive ecosystem of bog, dunes, salt marsh, and barrier beach. Shouldering these protected spaces are bustling coastal towns and sheltered villages with histories dating centuries backward to the days when the Pawtucket, Agawam, and Wampanoag made their encampments here. Today visitors can glimpse earlier times at such sites as the Spencer-Peirce-Little Farm in Newbury and the Essex Shipbuilding Museum in the quaint center of Essex.

Rocky Coast and Harbors



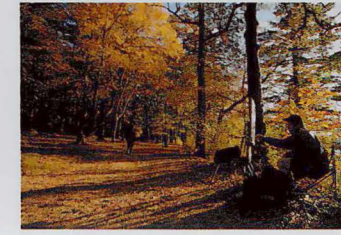
Unmistakable links to the past survive in every community from Nahant to Rockport, with a clear emphasis on the beneficial economic impact of the ocean on the people. Historic districts are filled with homes like The House of the Seven Gables in Salem and the Cabot House in Beverly. From the simple to the stately, each is a testament to the wealth associated with maritime trade, the fisheries and quarries, and other maritime industries. Exhibits at Salem Maritime National Historic Site and the collections of the Peabody Essex Museum proclaim the glory days of the East Indian and the China clipper and the heroic labor of the Gloucester men who fished the Stellwagen Banks. A bit south, the Saugus Iron Works reveals an early industrial site built to meet the needs of the growing colony. Along the coast, visitors hungry for the sea can explore Rockport's Halibut Point State Park or tour Gloucester's schooner *Adventure*.

Rural Farms and Forests



Defined by the Parker and Ipswich Rivers and several state forests, the rural enclaves of this agrarian region recapture a sense of times past in their traditional New England town centers. Along the scenic byways are dairy and horse farms, produce markets, country fairs, and garden centers. Within such public open spaces as the Harold Parker State Forest and Bradley Palmer State Park are trails for outdoor recreation, and at the Ipswich River Wildlife Sanctuary visitors can explore 2,800 acres of forests and meadows that provide habitats for songbirds and woodland mammals. Historic districts replete with period architecture are at the heart of nearly every town within the region. Visits to Glen Magna and the Rebecca Nurse Homestead in Danvers, the Wenham Museum, the Parson Capen House in Topsfield, Appleton Farms in Ipswich, and Brooksby Farm in Peabody lead travelers toward special events and exhibitions related to the area's rural and colonial heritage.

Merrimack River Valley



The American Industrial Revolution can be traced along the banks of the Merrimack, from the textile mills at Andover and Lawrence, past the cotton mills at Methuen and the shoe and leather factories at Haverhill and Amesbury, and onward to the shipyards at Newburyport. Andover's Machine Shop Village District, Lawrence Heritage State Park, and the Haverhill Historical Society are among the many sites that bring history to life. Each site offers insight into the plight of the immigrant workers who toiled to bring worsted wool, high-button boots, and other products to worldwide markets while making millionaires of their employers. Lowell's Boat Shop in Amesbury is a less unsettling glimpse into Yankee industry; the shop is the oldest continuously operating boat shop in the nation, famed for its classic New England dory. Likewise, poet John Greenleaf Whittier's Homestead in Haverhill harks back to simpler days in the New England countryside.

Practical Information

Visitor Centers

Ten Essex National Heritage Area (ENHA) visitor centers orient travelers to the region and provide information on sites within the area. The two principal centers are the National Park Service Regional Visitor Center in Salem and the Massachusetts State Visitor Information Center in Salisbury. The former has a historical focus; the latter assists primarily with practical information. The eight satellite centers orient visitors to nearby cultural and natural resources. For more information, check the ENHA website at www.essexheritage.org.

Transportation and Accommodations

Located 15 miles north of Boston, the Essex National Heritage Area is easily reached by car or public transportation, including train, bus, and seasonal ferry service. Logan International Airport is 10 miles to the south. Contact Logan Airport at www.massport.com or call 800-23-LOGAN. Visit the Massachusetts Bay Transportation Authority website at www.mbta.com or call 800-392-6100. For accommodations, call the North of Boston Convention and Visitors Bureau at 800-742-3506 or visit www.northofboston.org.

Hiking and Biking

The Essex National Heritage Area provides many opportunities for hiking, biking, cross-country skiing, and horseback riding. The Bay Circuit Trail is a recreational corridor extending 160 miles from Boston's South Shore to Plum Island in Newburyport. An 11-mile portion in Ipswich, Rowley, and Topsfield passes through state forests and other protected areas. Well-marked access points occur every few miles along the route. The ENHA website at www.essexheritage.org provides links to the organizations that oversee these trails.

Natural Areas

State forests and beaches, wildlife sanctuaries, conservation areas, nature preserves, and farms in the Essex National Heritage Area offer public access year-round or seasonally. Picnicking, hiking, bicycling, cross-country skiing, wildlife and bird watching, canoeing, kayaking, sailing, and fishing are possible at many sites. Visitors may obtain access information from individual sites. The ENHA website at www.essexheritage.org provides information about or links to the organizations that oversee public use of these natural resources.

Historic Districts

The Essex National Heritage Area includes many architecturally significant districts with links to the area's historical themes. Among these are the North Andover Historic District, Salem's McIntire Historic District, the Newburyport Historic District, Old Town Marblehead, and Haverhill's Rocks Village and Washington Street Historic Districts. Some offer walking trails only; some offer house tours; others have museums with public hours. Contact the visitor centers or the ENHA website at www.essexheritage.org for more information.

Education

Many Essex National Heritage Area sites offer educational programming related to the three historical themes and to its cultural and natural resources. A Curriculum Guide lists educational programs, theme-related day trips, and independent learning opportunities at more than 50 sites. The Discovery Box is a hands-on tool for use in classrooms; it features artifacts from resources throughout the area. An overview of the educational programs are posted on the ENHA website at www.essexheritage.org.



ENHA Sites Key

Each ENHA site on the map has been keyed to the history theme with which it is most associated. Although each site has been placed as closely as possible to its actual location, the site labels are not meant to be used as precise navigation tools.

- Early Settlement Sites
- ▲ Maritime Sites
- ✱ Industrial Sites

North

0 1 4 Kilometers
0 1 4 Miles

Other NPS Sites

Not far from the ENHA are several other National Park Service sites. Further information about them can be found on the National Park Service website at www.nps.gov.

- Adams National Historical Park, Quincy
- Boston African American National Historic Site, Boston
- Boston Harbor Islands National Recreation Area, Boston
- Boston National Historical Park, Boston
- Frederick Law Olmsted National Historic Site, Brookline
- John Fitzgerald Kennedy National Historic Site, Brookline
- Longfellow National Historic Site, Cambridge
- Lowell National Historical Park, Lowell
- Minute Man National Historical Park, Concord

ENHA Contact Information

The Essex National Heritage Area encompasses 500 square miles and 34 cities and towns. Citizens, businesses, nonprofit cultural and environmental organizations, local and state governments, and the National Park Service work together to preserve the region's cultural history and natural heritage. The Essex National Heritage Area is managed by the Essex National Heritage Commission, Inc., a private nonprofit corporation working in cooperation with the National Park Service. For more information, write to Essex National Heritage Commission, 140 Washington Street, Salem, MA 01970. Visit our website at www.essexheritage.org or call the National Park Service Regional Visitor Center in Salem, Massachusetts, at 978-740-1650.