

Holzwarth Trout Lodge,
Joe Fleshut's Cabin
Trail Ridge Road
Rocky Mountain National Park
Grand Lake Vicinity
Grand County
Colorado

HABS No. CO-79-M

HABS
COLO
25-GRLK.V,
1M-

PHOTOGRAPHS
WRITTEN HISTORICAL AND DESCRIPTIVE DATA

Historic American Buildings Survey
Rocky Mountain Regional Office
National Park Service
P.O. Box 25287
Denver, Colorado 80225-0287

HISTORIC AMERICAN BUILDINGS SURVEY

HABS
COLO
25-GRK.V
1M-

HOLZWARTH TROUT LODGE,
JOE FLESHUT'S CABIN

HABS No. CO-79-M

Location: Trail Ridge Road
Rocky Mountain National Park
Vicinity Grand Lake, Grand County, Colorado

Significance: This structure contributes to the historical theme of Pioneer Settlement and the Resort Industry. It was a typical western homestead cabin of the time and important for demonstrating the growth of the guest ranch industry.

Description: A. General Information - Joe Fleshut's Cabin

Architectural Merit and Interest: This cabin illustrates a typical western homestead cabin of the time. The cabin was later incorporated into the Holzwarth Ranch and is important also for demonstrating the growth of the guest ranch industry. It contributes to the historical theme of Pioneer Settlement and the Resort Industry.

Condition of Fabric: Deteriorating.

Summary Description: Joe Fleshut's cabin was built in approximately 1902. It is a one-story log cabin with dimensions measuring 18'-6" x 14'-6". The structure is unaltered, but deteriorating.

B. Detailed Description of Exterior

Foundation: Low, averaging 0'-6", of uncoursed fieldstone.

Wall Construction: Logs hewn at corners with dovetail notching.

Structural Systems: Log.

Porches, Stoops, Etc.: One two-step wood platform porch on the front facade, with a gable-end hood which has 4" x 4" supports. Also, one two-step wood platform stoop on the east facade.

Openings, Doorways, and Windows: Two single door openings; one on the front facade and one on the east side. Three window openings; all square frames with flat arches.

Roof - Shape and Covering: The green-rolled-asphalt covered gable roof has exposed 2" x 4" rafter ends.

C. Detailed Description of Interior

Floor Plans: The interior is one room.

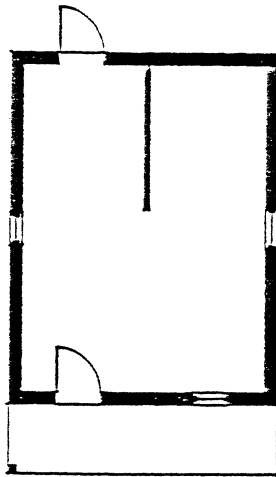
Stairways: Not applicable.

Flooring: Unfinished wood planks.

Wall and Ceiling Finishes: Both walls and ceiling are exposed log frame.

D. Site and Surroundings: The site is open with native grasses and soils. Pine trees grow nearby. Trail Ridge Road is visible to the east. The front facade is to the west.

205



Fleshuts Cabin

Scale : $\frac{1}{8}'' = 1' - 0''$

Taken from: Thomas B. Muths, AIA & Associates, Holzwarth Ranch, Rocky Mountain National Park: Historic Structures Report, Jackson: Thomas B. Muths, AIA & Associates, 1979.

HISTORIC AMERICAN BUILDINGS SURVEY

INDEX TO PHOTOGRAPHS

HABS
COLO
25-GRLK.V,
1M-

Holzwarth Trout Lodge,
Joe Fleshut's Cabin
Trail Ridge Road
Rocky Mountain National Park
Grand Lake Vicinity
Grand County
Colorado

HABS No. CO-79-M

Documentation: 1 exterior photograph (1985)
3 data pages (1985)

Arnold Thallheimer, Photographer, August 1985.

CO-79-M-1 JOE FLESHUT'S CABIN, VIEWING NORTHEAST.



HABS NO CO-29 M-1