

Holzwarth Trout Lodge,
Holzwarth Homestead Cabin
Trail Ridge Road
Rocky Mountain National Park
Grand Lake Vicinity
Grand County
Colorado

HABS No. CO-79-E

HABS
COLO
25-GRLK.V,
1E-

PHOTOGRAPHS

WRITTEN HISTORICAL AND DESCRIPTIVE DATA

**Historic American Buildings Survey
Rocky Mountain Regional Office
National Park Service
P.O. Box 25287
Denver, Colorado 80225-0287**

HABS
COLO
25-GR.LK.V
1E-

HISTORIC AMERICAN BUILDINGS SURVEY

HOLZWARTH TROUT LODGE,
THE HOLZWARTH HOMESTEAD CABIN
(HOLZWARTH TROUT LODGE, THE "MAMA" CABIN)

HABS No. CO-79-E

Location: Trail Ridge Road
Rocky Mountain National Park
Vicinity Grand Lake, Grand County, Colorado

Significance: This cabin contributes to the Pioneer Settlement and Resort Industry themes. It demonstrates the casual rustic character of early resort buildings.

Description: A. General Information

Architectural Merit and Interest: This cabin contributes to the Pioneer Settlement and Resort Industry themes. It demonstrates the casual rustic character of early resort buildings.

Condition of Fabric: Fair

Summary Description: The easternmost room of the cabin was built in 1917, and is constructed of V-notched logs with pole battens and concrete chinking. Protruding logs in the east wall indicate an interior partition, long since removed. Window openings in the south wall of the room have been closed or modified by the insertion of log segments cut to appropriate length. Around 1920, the Holzwarths added onto their one-room cabin. A 15' x 25' L-shaped room of V-notched log construction was added to the west wall of the original cabin. A porch to the south of this addition completed the rectangular plan of the existing structure. The addition is battened with split poles and chinked with concrete.

At some later time, perhaps about 1935, the living quarters were enlarged by moving a portion of the exterior wall 7' to the south so as to include the eastern most 13' of the porch, and the remaining portion of the porch was enclosed.

The interior of the cabin is partitioned into a living room, closet, bath, bedroom, and kitchen. The interior was remodeled and finished with wallboard about 1940. Numerous items -- furniture, taxidermal specimens, books, kitchen utensils, and other personal effects -- once owned by the Holzwarth family, were transferred to the National Park Service with the cabin, and these are regarded as historic appurtenances of the structure.

B. Detailed Description of Exterior

Foundation: Low, 0'-0" to 1'-0" of stone and poured concrete.

Wall Construction: Logs with saddle notching at corners.

Structural Systems: Log.

Porches, Stoops, Etc.: One - A wood platform porch with shed roof, wood railing and log column supports, covers all of the front facade and wraps around to cover a portion of the south facade. One - Enclosed, screened-in porch on the northwest corner.

Openings, Doorways, and Windows: The two doors are single and wood paneled, both with one light upper and wood screen doors. There are five windows which are four-light casements. The remaining two windows are one-beside-one sliders.

Roof - Shape and Covering: The roof has intersecting gables and is covered with wood shingles with exposed log rafter ends.

C. Detailed Description of Interior

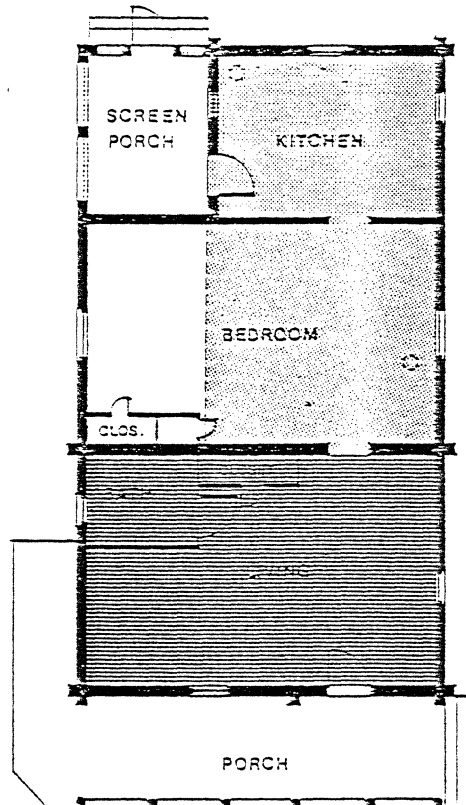
Floor Plans: The interior of the cabin is partitioned into a living room, closet, bath, bedroom, and kitchen.




Stairways: Not applicable.

Flooring: The floor is covered with tongue-and-groove wood flooring.

Wall and Ceiling Finishes: The walls and ceiling are covered with plywood. This was installed during the 1940 interior remodeling.

D. Site and Surroundings: The site is open, with native pines, aspens, grasses and soils. The front facade is to the east. The site is in a spectacular setting near the headwaters of the Colorado River, flanked by the Never Summer Range to the west and the Front range to the east.



-  Part I
-  Part II
-  Part III

Mamma Cabin
Scale : $\frac{1}{8}'' = 1' - 0''$

Taken from: Thomas B. Muths, AIA & Associates, Holzwarth Ranch, Rocky Mountain National Park: Historic Structures Report, Jackson: Thomas B. Muths, AIA & Associates, 1979.

HISTORIC AMERICAN BUILDINGS SURVEY

INDEX TO PHOTOGRAPHS

HABS
COLO
25-GRLK.V,
1E-

Holzwarth Trout Lodge,
Holzwarth Homestead Cabin
Trail Ridge Road
Rocky Mountain National Park
Grand Lake Vicinity
Grand County
Colorado

HABS No. CO-79-E

Documentation: 2 exterior photographs (1985)
4 interior photographs (1985)
3 data pages

Arnold Thallheimer, Photographer, August 1985.

CO-79-E-1 HOLZWARTH HOMESTEAD CABIN, VIEWING SOUTHWEST.

CO-79-E-2 HOLZWARTH HOMESTEAD CABIN, VIEWING NORTHEAST.

CO-79-E-3 HOLZWARTH HOMESTEAD CABIN, INTERIOR, LIVINGROOM.

CO-79-E-4 HOLZWARTH HOMESTEAD CABIN, INTERIOR, BEDROOM, VIEWING NORTH.

CO-79-E-5 HOLZWARTH HOMESTEAD CABIN, INTERIOR, BEDROOM, VIEWING SOUTH.

CO-79-E-6 HOLZWARTH HOMESTEAD CABIN, INTERIOR, KITCHEN.



HABS NO CO-79 E-1