

Holawarth Trout Lodge,  
Columbine Cabin  
Trail Ridge Road  
Rocky Mountain National Park  
Grand Lake Vicinity  
Grand County  
Colorado

HABS No. CO-79-A

HABS  
COLO  
25-GRLK.V,  
1A-

PHOTOGRAPHS  
WRITTEN HISTORICAL AND DESCRIPTIVE DATA

Historic American Buildings Survey  
Rocky Mountain Regional Office  
National Park Service  
P.O. Box 25287  
Denver, Colorado 80225-0287

HABS  
COLO  
25-GR.LK.V,  
1A-

HISTORIC AMERICAN BUILDINGS SURVEY

HOLZWARTH TROUT LODGE,  
COLUMBINE CABIN

HABS No. CO-79-A

Location: Trail Ridge Road  
Rocky Mountain National Park  
Vicinity of Grand Lake, Grand County, Colorado

Significance: This cabin contributes to the Pioneer Settlement and Resort Industry themes. It was built of log walls butted to corner posts and the roof covered with wood shingles.

Description: A. General Information

Architectural Merit and Interest: This cabin was built of log walls butted to corner posts. It was altered to become one of the more luxurious guest cabins with two bedrooms, a living room, a bathroom, and two porches.

Condition of Fabric: Fair

Summary Description: Columbine Cabin was built in 1922 as a small two-room cabin with a porch. Its log walls were butted to corner posts and the roof covered with wood shingles. It was altered by enclosing the south porch to enlarge the living room and adding a bathroom. Soon after, a second addition was made, including a bedroom on the west and a porch to the northwest. The cabin is currently used as National Park Service employee's quarters.

B. Detailed Description of Exterior

Foundation: Low, 0'-0" to 1'-0", of stone and concrete.

Wall Construction: Logs butted to corner posts.

Structural Systems: Log.

Porches, Stoops, Etc.: One porch is a three-step, wood platform with 4" x 4" columns and log railing. The other porch is also wood platform with a shed roof hood and log supports. The first faces to the south and the second faces to the northeast.

Openings, Doorways, and Windows: There are two single, white, wood paneled doors, each with one light upper. One is on the front facade and the other on the northeast side. The windows are of three types: three four-light casements; one six-beside-six slider; and four large single-light fixed pane.

All frames are rectangular wood with screens, are painted green, and have flat arches.

Roof - Shape and Coverings: Intersecting gables with wood shingles and 2" x 2" rafter ends.

C. Detailed Description of Interior

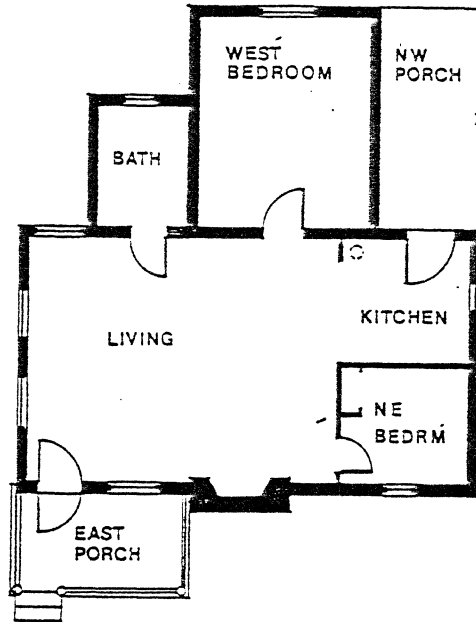
Floor Plans: The dimensions are 28' x 24' and the cabin contains two bedrooms, one bathroom, and one living room. Originally, the floor plan had only one bedroom and a smaller living room. The rooms are now being used as National Park Service employee's quarters.

Stairways: Not applicable.

Flooring: There is some linoleum and some tongue-and-groove wood flooring.

Wall and Ceiling Finishes: The walls and ceiling are all covered with plywood.

D. Site and Surroundings: The site is open with native pines, grasses, and soils. The front facade is to the southeast.



Columbine Cabin  
Scale :  $\frac{1}{8}'' = 1'-0''$

Taken from: Thomas B. Muths, AIA & Associates, Holzwarth Ranch, Rocky Mountain National Park: Historic Structures Report, Jackson: Thomas B. Muths, AIA & Associates, 1979.

HABS  
COLO  
25-GRKK.V,  
1A-

HISTORIC AMERICAN BUILDINGS SURVEY

INDEX TO PHOTOGRAPHS

Holzwarth Trout Lodge,  
Columbine Cabin  
Trail Ridge Road  
Rocky Mountain National Park  
Grand Lake Vicinity  
Grand County  
Colorado

HABS No. CO-79-A

Documentation: 2 exterior photographs (1985)  
2 interior photographs (1985)  
3 data pages (1985)

Arnold Thallheimer, Photographer, August 1985.

CO-79-A-1 COLUMBINE CABIN, VIEWING SOUTHEAST.

CO-79-A-2 COLUMBINE CABIN, VIEWING NORTHEAST.

CO-79-A-3 COLUMBINE CABIN, INTERIOR, LIVING ROOM, VIEWING FROM BEDROOM.

CO-79-A-4 COLUMBINE CABIN, INTERIOR, BEDROOM, VIEWING FROM LIVING ROOM.



HABS NO 60-~~13~~ 29 F-1



HABS NO Co-79 R-2



HABS No Co-79 A-3





HARS NO CO-79 A-4