

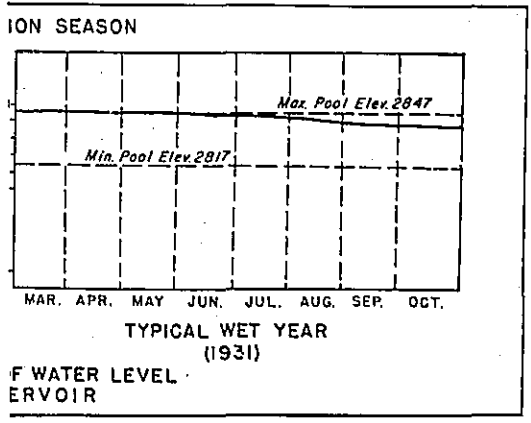
LEGEND

- 2847—MAXIMUM POOL ELEV.
- 2817—MINIMUM POOL ELEV.

LOCATION

SEC. 32 - T. 15 N., R. 3 W. 8. M.

Note: Technical data as to locations, reservoir and water level graphs obtained from Bureau of Reclamation April & May 1946.

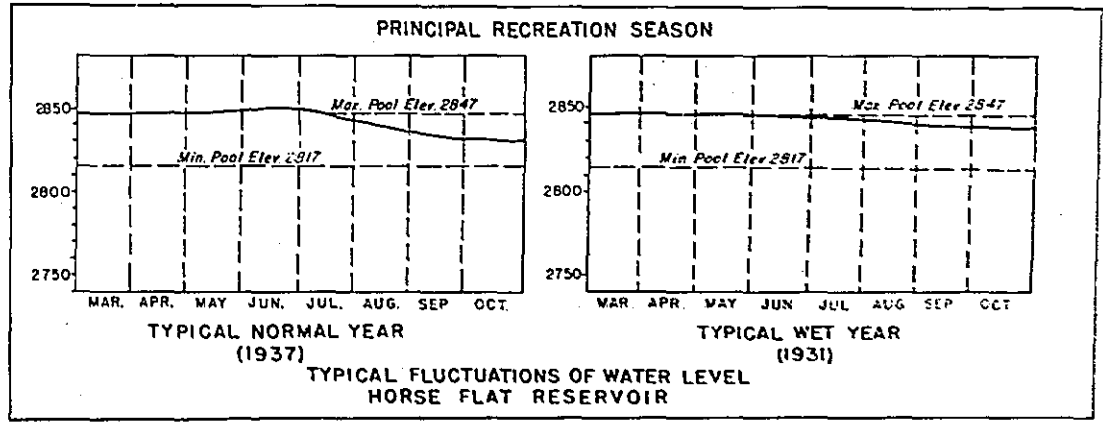
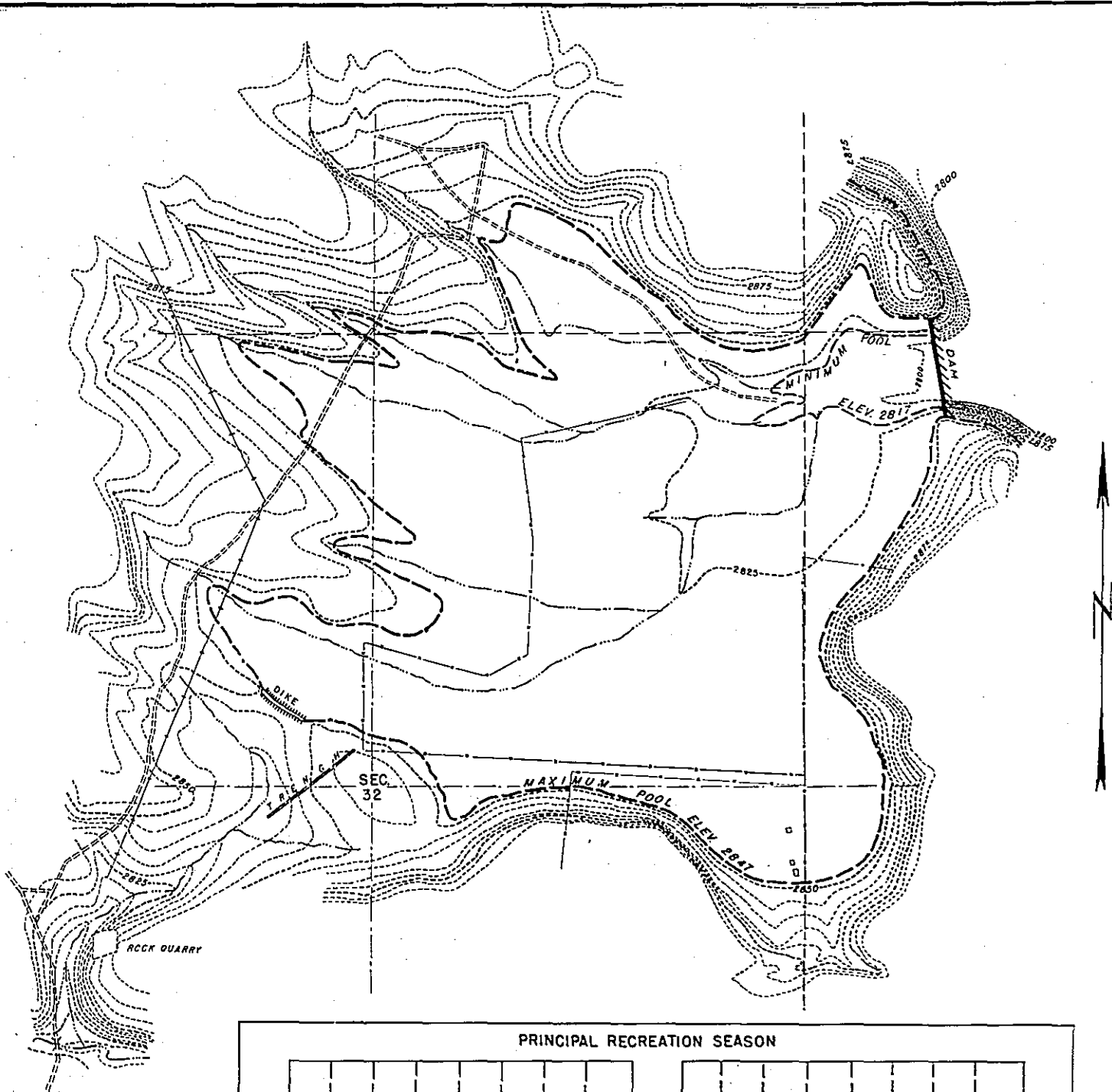


U.S. DEPARTMENT OF THE INTERIOR
 NATIONAL PARK SERVICE
 PREPARED BY
 RECREATION STUDY DIVISION

**HORSE FLAT RESERVOIR SITE
 RECREATION POTENTIALITIES**

SUBMITTED BY: R.E.H. RECREATION STUDY DIV.	RECOMMENDED BY: [Signature] TECHNICAL DIRECTOR, REGION 10 SAN FRANCISCO CALIF. DATE 1946
	HF-8001

REDUCED SIZE REPRODUCTION



BY P.P. HAYMA

REDUCED SIZE RE