

Földer: Proposed
Legislation
120-27

UNITED STATES
DEPARTMENT OF THE INTERIOR
NATIONAL PARK SERVICE
JOSHUA TREE NATIONAL MONUMENT
TWENTYNINE PALMS, CALIF.

November 15, 1947

MEMORANDUM for the Regional Director, Region Four.

The writer recently had occasion to pass the proposed Patton National Monument, S. 1363 and H.R. 4085, in T.1 S., R.17 E., in San Bernardino County, mentioned in your memorandum dated July 1, 1947. Attached are pictures and a brief resume of the writer's observations.

Both altars are nicely done, are impressive and in a good state of preservation. The altars are about one mile apart and they are located in an uninteresting area except that the mountains in the distant background are impressive but not more so than the many other mountains in Southern California.

The relief map covers the maneuver area used by the Desert Training troops. It shows existing roads, mountain ranges, rivers, etc., and was accurately done. It was apparently used for studying field problems. The relief map is not in good repair. Obviously the terrain was built up with sand, then covered with one inch of stabilized material and then painted. This stabilized surfacing has broken in many places and may soon be beyond repair.

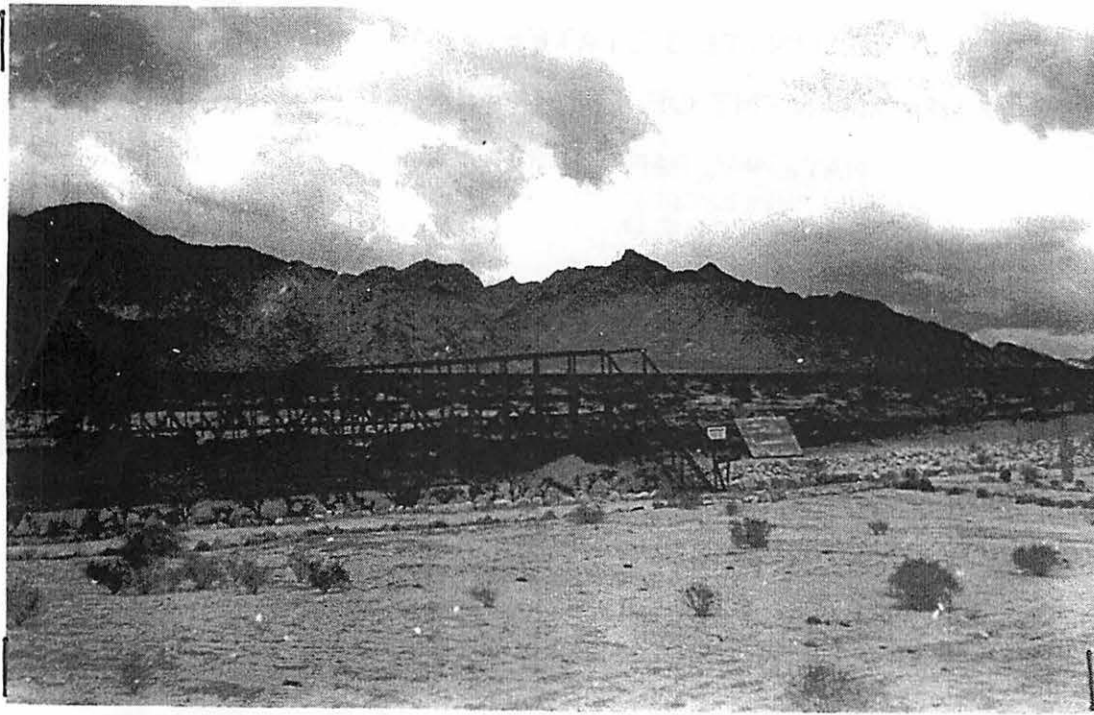
The area that is proposed as a Patton Memorial is approximately three miles north of the Desert Center-Parker road. The road is mainly used by residents of Southern California who drive to the Colorado River to go fishing. It does not appear likely that the road will ever be heavily traveled.

Discussions with local residents indicate that General Patton did not have his headquarters in the above-mentioned location. His headquarters were at Camp Young which is just south of Joshua Tree National Monument. There is some doubt that the two altars and relief model were constructed at the time of Patton's assignment in this area.

We thought you might be interested in the pictures and the above information.

Frank R. Givens
Custodian

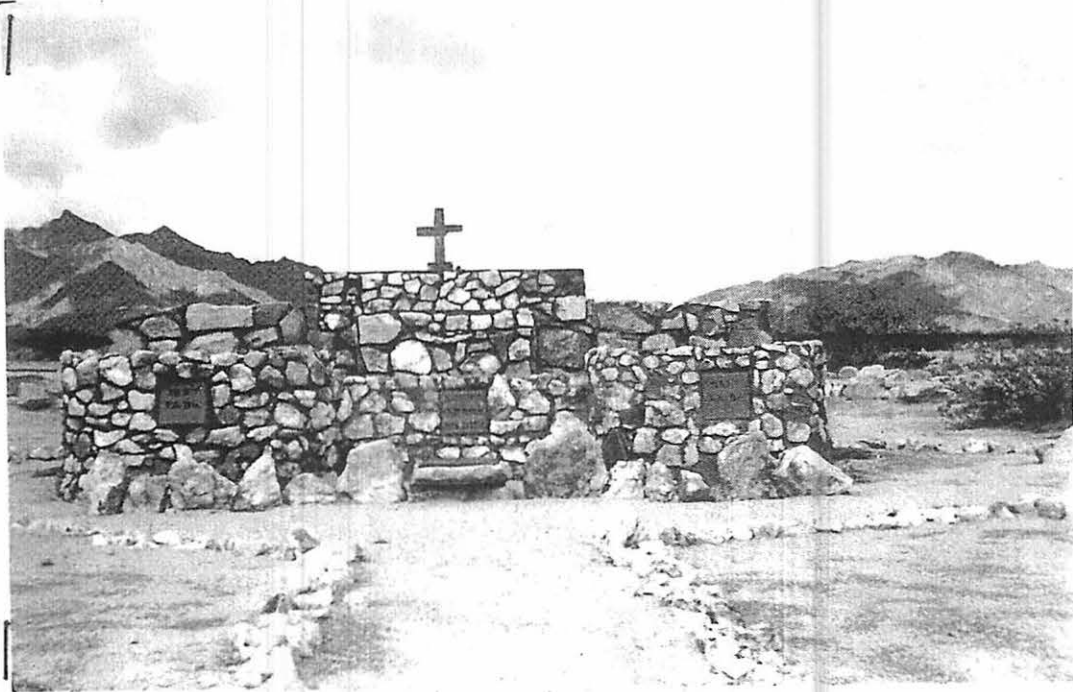
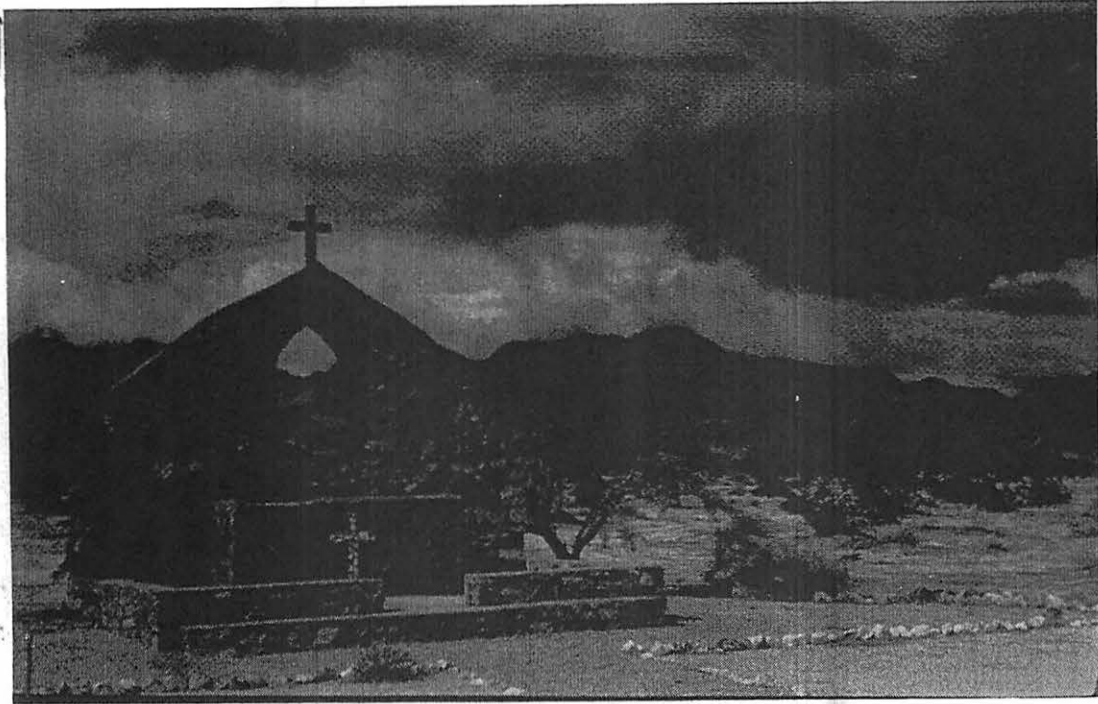
Enclosure 1289774



Approaching the relief map which was evidently used in studying field problems and planning maneuvers



Part of the relief map showing the mountains, deserts, roads, rivers, Army camps, etc., throughout the maneuver area



Two altars at which members of the armed forces of the Desert Training Group worshiped