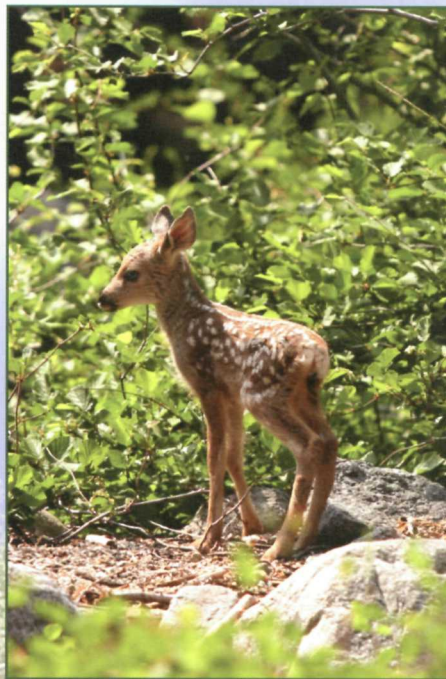
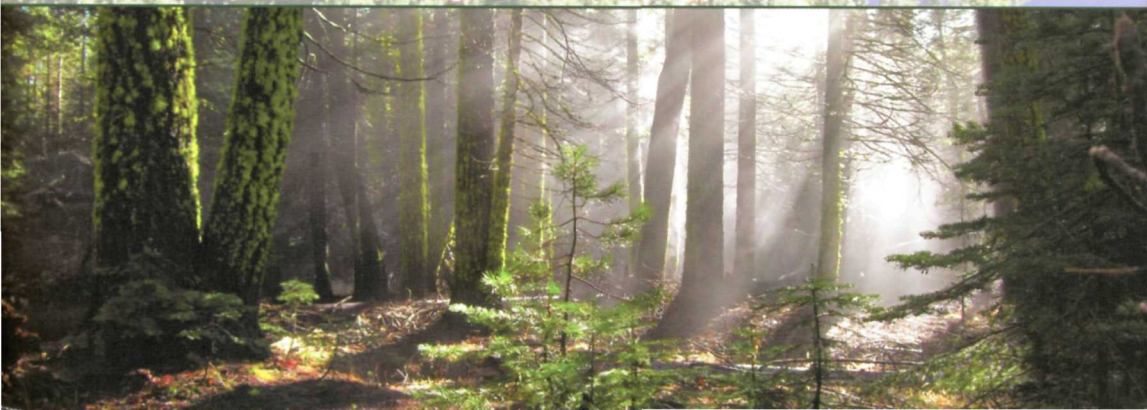




National Park Service



2007
Uniform
Program





CONTENTS

SHIRTS

Dress	3
Field	3
Work	3
Turtleneck	3

Maternity

Maternity	
Shirt	4
Trousers	4

PANTS, SHORTS & SKIRT

Convertible Trousers	4
Cargo Shorts.....	4
Cargo Trousers	4
Dress Skirts.....	5
Field Twill Trousers	5
Jeans.....	5
Brush Pants	5
Dress Trousers.....	5

Outerwear

Work Jacket.....	6
Gore-Tex® Waist-length	
Shell & Liners	6
Field Jacket & Liner.....	6
Dress Coat	7
Service Dress Jacket.....	7
Windbreaker	7
Gaiters.....	7
Rain Coat	8
Rain/Wind Pant.....	8
Gore-Tex® Hip-Length	
Shell & Liners	8
Gore-Tex® Hood.....	8
Insulated Vest	9
Fleece Jacket	9
Pullover Sweater	9
Cardigan Sweater.....	9
Fleece Volunteer Jacket.....	10
Coveralls	10
Unisex Gore-Tex®	
Volunteer Overshell	10
Volunteer Gore-Tex® Hood	11

Accessories

Ties & Tie Tack.....	11
Dress Coat Buttons	11
Headwear.....	11-12
Gloves & Belts	12
Footwear.....	13
Socks	13
Name Plates	14
How To Measure.....	14
Garment Care	15

Special Sizes

If you need sizes outside the ranges listed on your website, please contact the VF Imagewear Customer Service Department at 1-800-448-7968 during the hours of 7 AM - 9 PM CST Monday - Friday & 8 AM - 2 PM CST Saturday. Delivery of special-size items requires a minimum of 60 to 90 days.

Returns & Exchanges

All returns/exchanges (other than defects) must be made within 30 days of receipt of your order. The return authorization label must clearly state the reason an item is being returned.

Garments that have been worn, altered, laundered or have labels removed cannot be returned/exchanged.

Any defective item can be returned with a description of the defect. Defective items (not including normal wear & tear) can be returned at any time, within one year of receipt.

NONSTOCK: means the particular style requested does not generate enough volume to require stocking it on the shelf with inventory readily available for shipment. The normal turn around time is 60-90 days from the date of order.

Ordering Information

Please visit your web site at www.vfsolutions.com/LMA for complete ordering information.

CAUTION: Garments contained in this catalog meet government flammability Class 1 requirements but do not provide protection from ignition sources, molten substances or chemical exposure. Special flame resistant garments are available if required.

Product images shown here are photomechanically reproduced. As a result, colors may vary from actual fabric samples.

Service Dress

65% polyester / 35% rayon, permanent-press tropical

Men's

NP1112 Long Sleeve 10700 (N430)

NP1118 Short Sleeve 10800 (N428)

Women's

NP1115 Long Sleeve 10701 (N456)

NP1123 Short Sleeve 10801 (N454)



Field Shirt

65% polyester / 35% combed cotton, permanent-press poplin

Men's

NP1120 Short Sleeve 65000 (N432)

Women's

NP1124 Short Sleeve 65001 (N458)



Turtleneck

Black, Elbeco turtleneck, wickable, odor resistant

NP5120 Unisex..... 5120 (N660)

Work Shirt

65% polyester / 35% combed cotton, permanent-press poplin

Men's

NP1100 Long Sleeve w/ Name Tag ..10740 (N600)

NP1104 Short Sleeve w/ Name Tag .10840 (N431)

65% polyester / 35% combed cotton, permanent-press poplin

Women's

NP1103 Long Sleeve w/ Name Tag ...10741 (N457)

NP1107 Short Sleeve w/ Name Tag ..10841 (N601)



Maternity Shirt

65% polyester / 35% combed cotton
NP1125 Long Sleeve 1125 (N654)
NP1126 Short Sleeve 1126 (N655)



Maternity Trousers

55% polyester / 45% wool
NP2108 Trousers..... 105392 (N565)



Cargo Shorts

65% polyester / 35% combed cotton, 8 oz. twill
NP2143 Men's..... 2143 (N636)
NP2142 Women's..... 2142 (N637)



Convertible Trousers

Supplex nylon w/ Teflon HT Shell w/ flex-vent, mesh-knee vents
NP2144 Unisex..... 2144 (N652)



Cargo Trousers

65% polyester / 35% combed cotton, 8 oz. twill
NP2240 Men's..... 2240 (N650)
NP2241 Women's.... 2241 (N651)



Dress Skirts

Winter
55% polyester / 45% wool, 16 oz. elastique
Summer
55% polyester / 45% wool, 11 oz. tropical

NP2107 Summer...20122 (N483)
NP2106 Winter20121 (N485)



Dress Trousers

Winter: 55% polyester / 45% wool, 16 oz. elastique
Summer: 55% polyester / 45% wool, 11 oz. tropical

Men's
NP2101 Summer...10537 (N554)
NP2100 Winter10536 (N556)
Women's
NP2105 Summer...12041 (N575)
NP2104 Winter12031 (N576)



Jeans

50% polyester / 50% combed cotton,
10 oz. twill, permanent press
NP2110 Men's Jeans10640 (N338)
NP2111 Women's Jeans12010 (N341)



Brush Pants

10 oz., 100% cotton duck cloth
NP2116 Men's Pant.....203 (N563)
NP2117 Women's Pant.....204 (N581)



Field Twill Trousers

65% polyester / 35% combed cotton, 8 oz., permanent-press twill
NP2102 Men's Trousers10540 (N658)
NP2103 Women's Trousers12021 (N659)



Work Jacket

100% cotton, 10 oz. duck cloth
 NP3154 Unisex w/ Name Tag.....50700 (N630)

Waist-Length Gore-Tex® Shell

100% Taslan nylon, enhanced Gore-Tex® design

Service/Field

NP3162 Unisex w/ Badge Tab &
 Nameplate Holder.....502009 (N411)

Work

NP3163 Unisex without Badge Tab &
 Nameplate Holder.....502509 (N412)



Waist-Length Thinsulate® Liner

(not pictured)

100% nylon-liner fabric with 200 gram Thinsulate® in body,
 150 gram Thinsulate® in sleeves

NP3168 Unisex Liner.....506009 (N351)



Field Jacket

65% polyester / 35% combed cotton, 8 oz., permanent press twill

Service/Field

NP3144 Unisex w/ Badge Tab &
 Nameplate Holder.....201197 (N325)

Work

NP3151 Unisex w/ Name Tag.....201196 (N625)

Field Jacket Zip-Out Liner

(not pictured)

100% nylon, quilted

NP3100 Unisex Jacket Liner20000 (N355)

Dress Coat

Winter:
55% polyester / 45% wool, 16 oz. elastique

Summer:
55% polyester / 45% wool, 11 oz. tropical

Men's

NON-STOCK ITEM

NP4101B Winter..... 157 (N272)

NP4100B Summer 156 (N271)

Women's

NON-STOCK ITEM

NP4103B Winter..... 158 (N274)

NP4104B Summer..... 159 (N273)



Service Dress Jacket

55% polyester / 45% wool, 16 oz. elastique

NP4102 Men's Jacket40055 (N326)

NP4105 Women's Jacket40056 (N333)



Windbreaker

100% hi-tech nylon

NP3104 Unisex Service/Field
w/ Badge Tab / Nameplate Holder.....50006 (N322)

NP3102 Unisex Work Windbreaker without
Badge Tab / Nameplate Holder.....50005 (N323)



Gaiters

100% Taslan nylon, enhanced Gore-Tex® design

NP3128 Unisex Gaiters.....210 (N288)





Hood

Thinsulate® Insulated Gore-Tex®
 NP3131 Unisex Insulated Hood.....50450 (N307)

Uninsulated Gore-Tex® Hood
 NP3130 Unisex Uninsulated Hood.....50400 (N309)

Hip-Length Gore-Tex® Shell

100% Taslan nylon, enhanced Gore-Tex® design

Service/Field

NP3158 Unisex w/ Badge Tab &
 Nameplate Holder.....503009 (N378)

Work

NP3159 Unisex without Badge Tab &
 Nameplate Holder.....503509 (N379)

Hip-Length Liner

Thinsulate® (not pictured)

100% nylon liner fabric with 200-gram Thinsulate® body,
 150-gram Thinsulate® in sleeves

NP3166 Unisex Liner.....506109 (N349)

Goose Down (not pictured)

100% nylon liner fabric with 550-premium goose down

NP3164 Unisex Liner.....506209 (N353)



Rain/Wind Pants

100% nylon, polyurethane coating

NP3118 Men's.....50100 (N561)

NP3120 Women's.....50102 (N579)

Rain Coat

100% nylon, polyurethane coating

NP3200 Unisex.....3200 (N639)



Fleece Jacket

100% recycled plastic ecologically-sound EcoSpun™ fleece
 NP3132 Unisex Fleece Jacket..... 50501 (N324)



Insulated Vest

100% Taslan nylon, EcoSpun™ fleece lined and insulated with 60-gram Thinsulate®

Field

NP3133 Unisex w/ Badge Tab & Nameplate Holder..... 50505 (N588)

Work

NP3129 Unisex w/ Badge Tab & Nameplate Holder..... 50507 (N622)



Pullover Sweater

100% Pii-Trol acrylic

NP5112 Unisex w/ Badge Tab & Nameplate Holder..... 4651 (N594)

Cardigan Sweater

100% Pii-Trol acrylic

NP5116 Unisex..... 5116 (N646)





Uninsulated Coveralls

100% cotton, 10 oz. duck cloth
NP3152 Unisex w/ Name Tag 3152 (N635)



Insulated Coveralls

100% cotton, 10 oz. duck cloth, quilted nylon lining
NP3156 Unisex w/ Name Tag 3156 (N665)



Bib Coveralls

100% cotton, 10 oz. duck cloth, quilted nylon lining
NP3190 Unisex 3190 (N638)

VOLUNTEER ITEMS



Fleece Jacket

Dark brown, two-ply Taslan® nylon
NP3213 Unisex 3213 (N656)



Unisex Gore-Tex® Overshell

Dark brown, two-ply Taslan® nylon fabric
NP3206 Unisex 3206 (N657)

Hood

NP7689 Unisex 7689 (N667)

Dark Brown, two-ply Taslan® nylon Gore-Tex®

- Hood is designed to snap on under the collar of the overshell



Ties

55% polyester / 45% wool, tropical

Unisex

- NP7130 Clip-On (17" long).....20170 (N544)
- NP7131 XL Clip-On (19" long).....20171 (N543)
- NP7129 Four-In-Hand20172 (N545)
- NP7132 Clip-On (14" long).....20175 (N617)

Women's

- NP7133 Women's Cross Tie20180 (N616)

Tie Tack

- NP7136 Unisex.....20185 (N531)



Dress Coat Buttons

- NP7204 24 Ligne Replacement Button..... 7204 (N664)
- NP7203 32 Ligne Replacement Button..... 7203 (N663)



Fur Trooper Cap

- Shell: 100% Taslan nylon Gore-Tex®, Mouton fur trim
- NP7113 Unisex.....20190 (N261)

Work Hat

- 100% cotton twill, hat band emulates leather band
- NP7168 Unisex.....19500 (N599)



Ball Cap

65% polyester / 35% cotton twill

Winter

- NP7101 Unisex.....240 (N605)



Summer

Front Panel: 65% polyester / 35% cotton twill,
Back Panels: nylon mesh

- NP7102 Unisex.....245 (N604)



Fleece Hat

100% recycled plastic ecologically-sound Ecospun™ fleece,
NPS embroidery

- NP7191 Unisex.....7191 (N661)



Winter Cap

Shell: 100% Taslan® nylon
Lining: fleece

- NP7114 Unisex.....220 (N299)

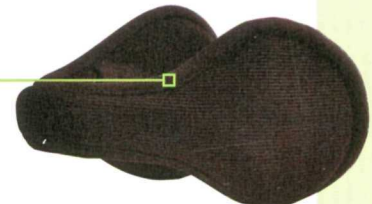


Balaclava

- 61% nylon / 20% polyester insulation / 15% spandex / 4% x-static
- NP7193 Unisex.....7193 (N669)

Gorgonz

- 93% nylon / 7% spandex, 100% polyester insulation
- Shell: 100% Taslan nylon Gore-Tex®
- NP7192 Unisex.....7192 (N662)



Embossed Hat Band

Cordovan, 2 oz. vegetable-tanned cowhide
 NP7108 One size.....20165 (N204)



Ranger Hat

Winter: Fur felt, leather sweatband, head strap grommets

NP7103 Unisex.....4400 (N259)

Summer: Milan, straw braid, foam sweatband head strap grommets

NP7104 Unisex.....4405 (N301)



Hat Trap

Black, heavy-duty molded plastic
 NP72027202 (N649)



Rain Hat Cover

(not pictured)
 Translucent, vinyl plastic
 NP7146 Unisex.....20155 (N276)

Head Strap

Cordovan, Leather
 NP7107 One size.....2009 (N509)



Unisex Brown Leather Gloves

Waterproof glove, thinsulate
 NP7190 One size..... 7190 (N290)



GLOVES

Deerskin Gloves
 Brown, native deerskin (shown with liner)
 NP7116 Men's..... 1860 (N292)
 NP7118 Women's..... 1861 (N296)

Deerskin Glove liners (removable)
 80% wool / 20% nylon lining
 NP7169 Men's..... 18605 (N627)
 NP7170 Women's..... 18615 (N632)

New gloves will fit very snug, but will stretch as worn.



BELTS

Embossed Belt
 Cordovan 9 oz. vegetable-tanned cowhide
 NP7105 Unisex..... 20160 (N209)

Replacement Brass Buckle
 NP7109 Unisex..... 40060 (N245)

Heavy-Duty Embossed Belt
 Cordovan, 14 oz. vegetable-tanned cowhide
 NP7106 Unisex..... 30060 (N210)

Order belts 1" to 2" larger than waist measurement.



Female Walker/Dress Shoe

Brown, leather
NP6131 Ladies 6131 (N653)



Male Walker/Dress Shoe

Brown, leather
NP7686 Men's 7686 (N647)



Female Pump

Brown, low-heel leather pump (not pictured)
NP7687 Ladies 7687 (N648)

Lined-Boot Sock

40% wool, 40% polypropylene,
20% nylon Spandex®, reinforced
NP7122 Unisex 2449 (N494)



Hiking Sock

88% acrylic, 10% stretch nylon, 2% Spandex®
NP7126 Unisex 1550 (N504)



Dress Crew Sock

64% acrylic, 30% nylon, reinforced,
6% 4-channel wicking polyester
NP7167 Unisex 1532 (N615)



Replacement Shoe Strings

NP6132 Men's 6132 (N666)
NP6133 Women's 6133 (N668)



Front Country Hiker

Premium full-grain leather
NP6111 Men's 7535 (N225)
NP6118 Women's 7536 (N238)



Back Country Hiker

(limited quantities remain)
Flexible Nubuk® leather, waterproof and durable
NP6112 Men's 7682 (N610)
NP6119 Women's 7683 (N611)



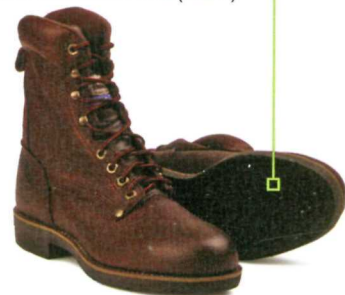
Danner Full-Curl GTX Boot

*AVAILABLE FOR ONE-TIME PURCHASE DURING
THE MONTH OF OCTOBER*
Waterproof Gore-Tex® liner, with a vibram sole



Work Boots

Leather, waterproof and durable
NP6109 Men's 7412 (N231)





Magnetic Service

NP7189 Name Bar.....2000 (N645)



Uniform

NP7134 Name Bar.....1000 (N362)



VIP Volunteer

NP7135 Name Bar.....1010 (N363)



Two Language

NP7140 Name Bar.....700 (N360)



Sign Language

NP7137 Name Bar.....500 (N359)



Recognition

NP7138 Name Bar.....550 (N364)



Name Tag

NP7145B Cloth Name Tag.....990 (N369)

How to Measure

Before ordering, take your measurements to ensure that you select the correct size for each uniform item. Each item has its own size chart and requires that you select your size based on your measurements. The garments are designed to accommodate body size. The size information listed is not how large the garment is, it is the body size that will comfortably fit that size. For best fit, please follow the measuring instructions carefully. It is recommended to either have another person assist you or have your measurements taken professionally. Taking your own measurements could increase the chance for error.

HEIGHT (1): Stand straight against the wall without shoes. Make a mark level at top of head. Measure from this point down to the floor.

NECK (2): Measure a shirt collar that fits you well. Lay collar flat. Measure from center of collar button to far end of the buttonhole, or, measure around neck where buttoned shirt would fit. Allow for two fingers' width between tape measure and neck.

CHEST/BUST (3): Measure just under arms across shoulder blades at fullest part of chest or bust and back, holding tape firm and level.

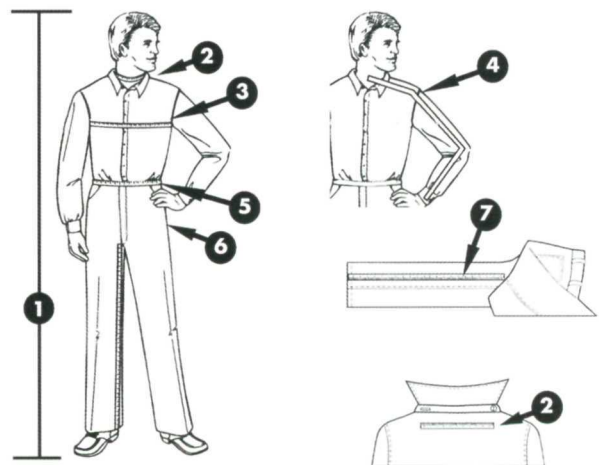
SLEEVE (4): Bend elbow and bring hand close to upper body. Start at the center back of the neck and measure across the shoulder to the elbow and to the wrist bone.

WAIST (5): Measure over shirt but not over pants, around waist where you normally wear pants. Keep tape level, but not tight.

HIPS (6): Measure around fullest point of seat while standing, keep tape level.

INSEAM (7): Measure a well-fitting, similarly-styled pair of pants. (Do not measure blue jeans.) Lay them flat, with the front and back creases smooth. Measure from the crotch seam along the inseam to the bottom of the hem. Styles worn with higher heels require extra length.

NOTE: Incorrect inseam measurement is the #1 reason for returns.



Garment Care

100% Cotton

(Cotton Shirt/T-shirts/Jeans)

- Machine wash cold
- Do not use bleach or fabric softener
- Tumble dry on low
- Touch up with warm iron (not T-shirts)

(Coveralls)

- Machine wash warm
- Do not use bleach or fabric softener
- Tumble dry warm

(Cool iron)

(Knit Polos)

- Do not dry clean
- Machine wash warm
- Do not use bleach or fabric softener
- Tumble dry on medium

100% Polyester

(Turtlenecks/Ties)

- Machine wash warm
- Do not use bleach or fabric softener
- Tumble dry on permanent press setting, removing promptly
- Touch up with warm iron
- Dry clean every fifth wash to maintain shape

Acrylic

(Sweaters)

- Machine wash warm (inside out)
- Do not use bleach or fabric softener
- Tumble dry low or lay flat to dry and reshape

Nylon Fleece

(Vests/Jackets)

- Machine wash warm
- Do not use bleach or fabric softener
- Tumble dry low

Wool

(Sweaters)

- Dry clean only

Nylon Outerwear

(Windbreaker/Coat/Parka)

- Do not dry clean
- Machine wash cold - gentle cycle
- Use mild soap, rinse thoroughly
- Do not use bleach or fabric softener
- Tumble dry on low - do not iron

Balaclava

- Machine wash cold
- Do not use bleach or fabric softener
- Tumble dry on low - do not iron

Gore-Tex®

- Machine wash in warm water using a mild soap
- Do not use bleach or fabric softener
- Tumble-dry on medium heat
- For soiled spots, use K2R® brand or a similar product

Felt & Straw

(Hats)

- Hats should be brushed with a long, softly bristled brush
- If water soaked, let dry naturally
- Use commercial spot remover for stains - put on a soft, dry cloth and allow cleaner to evaporate almost completely before using on hat - remember the vapor removes the stain not the liquid. Feather out toward the edges

Polyester/Cotton

(Poplin shirts/skirt/trousers/shorts)

- Machine wash warm
- Do not use bleach or fabric softener
- Tumble dry on permanent press setting, removing promptly
- Touch up with warm iron
- Dry clean every fifth wash to maintain creases

Spots & Stains

The following are simple procedures for removing or reducing stains from uniform fabrics using common household items.

Butter, Cooking Oil: Sponge and flush with naphtha (paint remover), feather out and dry.

Blood: Sponge with water. Dry. Sponge and flush with naphtha. Feather out and dry.

Coffee, Tea, Ketchup: Sponge with water and soak stain in glycerine (glycerol). Flush well with water. Feather out and dry.

Chewing Gum: Sponge in naphtha and scrape off gum. Feather out and dry.

Chocolate: Dry and brush off excess. Sponge with naphtha and dry. Sponge with water. Loosen stain with brush. Feather out and dry.

Glue: Sponge with water. Loosen with brush. Flush with water. Feather out and dry.

Iodine: Sponge with rubbing alcohol against blotter paper. Feather out and dry.

Mayonnaise: Apply starch (laundry grade) with naphtha to create a paste. Dry and brush off excess. Sponge and flush with naphtha. Feather out and dry.

Motor Oil/Tar: Apply starch/naphtha paste. Dry and brush off excess. Sponge and flush with naphtha. Feather out and dry.

Mustard: Apply dry starch. Brush to remove excess. Apply glycerine for 30 minutes. Flush well with water. Feather out and dry.

Mud/Rust: Dry and brush off excess. Sponge with water. Loosen with brush. Flush with water. Feather out and dry. Repeat with vinegar (white grade) if necessary.

Ink/Ball point: Rub white petroleum jelly into stain. Soak in detergent solution and launder.

Tree Sap: Mix a small amount of ammonia with water and gently rub into spot. After spot has dried, have garment cleaned.

Grass Stains: Rub detergent or a pre-wash directly into stain. Clean promptly.

The Problem Of Perspiration

Perspiration can have a number of harmful effects on fabrics, such as loss of fabric strength. To prevent such problems, the

following precautions should be taken:

- Dry cleaning solvents do not remove perspiration from a fabric. Affected areas should be called to the attention of your dry cleaner.
- Although wool and wool-blend fabrics may not be washable, a perspiration-affected area may be placed over a towel and blotted with a damp sponge. The area should then be blotted vigorously between two dry towels and hung to air dry.
- For extreme cases, dress shields and the substitution of T-shirts for sleeveless undershirts are recommended.

Please Note:

- Most chemicals listed above for spot removal are flammable and should be used in a well-ventilated area free of any open flame. After treatment, air dry. Do not dry in a tumble dryer after treatment.
- All work should be done with a clean blotter underneath the stain area.
- Feathering out prevents ringing and is done by starting outside the stain and lightly brushing towards the center.
- These care procedures are provided only as a service and should not be interpreted as a warranty, implied or otherwise.

