



**K**EWEENAW  
**N**ATIONAL  
**H**ISTORICAL  
**P** · **A** · **R** · **K**

# Ingot

Your guide to the Keweenaw's Copper Country

A Publication of Keweenaw National Historical Park

Summer 2002

## Well-timed for 10th Anniversary Celebration C&H General Office Rehabilitation Project

It seems only fitting that Keweenaw National Historical Park will celebrate a landmark event in conjunction with its first rehabilitation project. The focus of this exciting endeavor is the exterior of the former Calumet & Hecla General Office Building, located at the corner of Calumet Avenue (US 41) and Red Jacket Road in Calumet. A product of four distinct building periods spanning 1887 to 1909, the cut stone structure now serves as park headquarters.

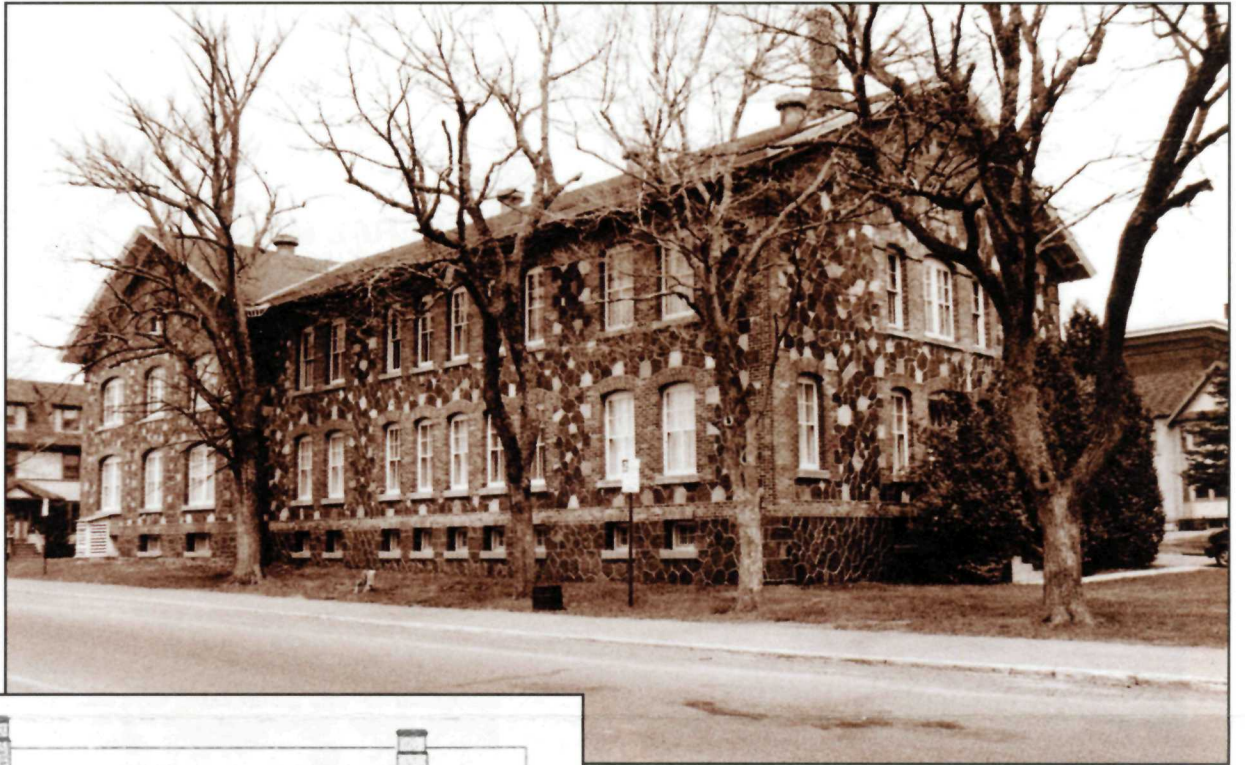
The National Park Service purchased the building in December 2000, and the rehabilitation planning effort that has taken place since then is about to be revealed – just in time for the parks' Tenth Anniversary on October 27, 2002! A building rededication celebration is planned for that date.

A rich history unfolded beneath that roof. The top administrators of Calumet & Hecla, the dominant copper mining company in Michigan at the turn of the twentieth century, worked there. The decisions made there affected the lives of thousands – from miners and their families on the Keweenaw to stockholders on the east coast. Along with their copper mining contemporaries at mines throughout the Copper Country, their pioneering ways and mining methods shaped mining practices and techniques that were adopted worldwide.

Exterior rehabilitation work will begin in June 2002. The building will be scaffolded for the duration of the project, which will allow craftsmen trained in special preservation skills to perform masonry and brick tuck-pointing and repair. A new roof will be installed; the windows and doors will undergo rehabilitation and the front entrance will be altered to depict its original design, while at the same time improving accessibility.

Phase II of this project addresses the rehabilitation of the interior of the building. The building served as home to the Calumet Clinic from 1979 through 1998, and many interior changes were made to accommodate medical offices and exam rooms during that period. The park staff has done exhaustive research as they plan to return the interior of the building to its original configuration of office space when it was occupied by C & H administration. A request for funding to support this project has been made by Keweenaw National Historical Park to the National Park Service in Washington, DC.

In the past year and a half, Keweenaw National Historical Park has acquired additional historic structures and lands within park boundaries. These include over 140 acres of land, the Quincy Mining Company Pay Office, the former Calumet & Hecla Library, and the Union Building at the entrance to



Circa 1887

Calumet's historic downtown district. Park administrators are hopeful to obtain additional funding in 2003 to begin the rehabilitation of the Union Building, much in the same manner as the C & H Administration Building project planned for this summer. Rehabilitation projects will be researched and planned for all of these structures as funding becomes available and as the park strives to recapture the essence of the historic landscape during the hey-day of the copper mining boom on the Keweenaw.

### The Copper Ingot

*For more than a century, the copper ingot was the product of mining, milling and smelting in the Keweenaw. Typically, ingots were cast in two sizes—the smaller slightly longer than 10 inches and weighing 25 pounds, the larger about 22 inches long and weighing 50 pounds. From the 1840s to 1968, more than 11 billion pounds of copper were shipped from the Keweenaw.*

*The former Calumet & Hecla General Office Building, located on the corner of Calumet Avenue and Red Jacket Road, will undergo an extensive rehabilitation this summer. The building, which is the headquarters for Keweenaw National Historical Park, will receive preservation treatment of its roof, cornices, windows, doors, and masonry. Photo by Joseph Mihal.*

### A Message from the Superintendent

Welcome to the Keweenaw! Together with our cooperating sites, we are proud to be your host in Michigan's Copper Country and Keweenaw National Historical Park.

It has been nearly ten years since Public Law 102-543 created this park. Increased support from park neighbors, park visitors, and our congressional delegation has resulted in increased funding and staffing. The park has been successful in implementing our General Management Plan and there is momentum in preservation efforts throughout the area. The park staff is enthused about the opportunity to offer technical assistance to our partners.

The accompanying article illustrates the success of thoughtful planning, preservation ethics, and community support. We hope to share many more success stories with you in the years to come.

As you tour the area, we also hope that you will gain an appreciation for the unique history of geology, engineering, technology, and human spirit that make this region unlike any other in the world. Explore this beautiful and fascinating peninsula; explore a piece of your national heritage.

**Frank Fiala, Superintendent**  
**Keweenaw National Historical Park**





### QUINCY UNIT

This site interprets the story of the Quincy Mining Company, one of the first commercially successful mines in the Keweenaw. Here, you can see the largest steam hoist in the world, explore the mine's surface area, and ride a tram to an underground tour that will give you a first-hand view of the mine's operation.

Just north of Hancock on U.S. 41. Open mid-May to mid-October, 9:30 a.m. to 6 p.m. daily. Last tour at 5 p.m. Limited spring and fall hours. (906) 482-3101



### A.E. SEAMAN MINERAL MUSEUM

Michigan's official mineral museum, the A.E. Seaman Mineral Museum, offers visitors an opportunity to learn about the geological forces which produced the most extensive concentration of pure native copper in the world.

Open year-round in the Electrical Energy Resources Center on the Michigan Technological University campus in Houghton. Spring, summer and fall hours: 9 a.m. to 4:30 p.m. weekdays. Also noon to 4 p.m. Saturdays in the summer. Phone for winter hours: (906) 487-2572

### OLD VICTORIA

The Old Victoria restoration preserves a group of small log houses built to accommodate early miners. Its isolated setting will help you appreciate the conditions faced by the miners and their families.

At Rockland on U.S. 45, go five miles southwest on the Victoria Road. Open summers only, noon to 5 p.m. (906) 886-2617



### PORCUPINE MOUNTAINS WILDERNESS STATE PARK

Michigan's largest state park contains numerous early historic mining sites. Virgin forest offers a glimpse of conditions known by the prehistoric Native American, the voyageur, and the early European-American miners.

Fifteen miles west of Ontonagon. Open year-round; Visitor Center hours 10 a.m. to 6 p.m. mid-May to mid-October. Modern and backcountry camping. (906) 885-5275

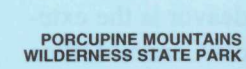
### McLAIN STATE PARK

As the mining industry developed in the mid-19th century, a canal was dug along a Native American portage route, completing a water passage through the Keweenaw Peninsula. McLain State Park is located on Lake Superior at the north entry of what is now known as the Keweenaw Waterway.

Along M-203, midway between Calumet and Hancock. Modern campground. (906) 482-0278



# Keweenaw National Historical Park



## About Keweenaw National Historical Park and Cooperating Sites

Keweenaw National Historical Park is both a physical place and a concept that challenges our traditional notion of national parks. Some 30 years after the end of significant copper mining, a mission is being undertaken to represent the working days on the Keweenaw Peninsula through preservation and interpretation of cultural landscapes, sites, structures and artifacts.

Keweenaw National Historical Park is modeled after many successful efforts to preserve not only individually significant buildings, but also entire neighborhoods, towns and regions that provide living contexts for these buildings. The park will promote a framework for cooperation among the National Park Service, state and local governments, citizens' groups, businesses and individuals.

Important sites that tell the story of the Keweenaw Peninsula currently stretch for more than 100 miles, from Copper Harbor to Ontonagon. A number of attractions, operated by various public and private owners, cooperate with the National Park Service in telling the stories of the Keweenaw and offering visitors a sense of the excitement, challenge and opportunity created by the mining industry. Each of Keweenaw National Historical Park's Cooperating Sites operates independently of the National Park Service, and admission fees vary.

By preserving and interpreting the past, Keweenaw National Historical Park enriches our lives today—and endows future generations with a timeless treasure.



Historic Calumet is rich in history and distinctive architecture, and includes a number of Cooperating Sites. Start your visit at the Keweenaw Tourism Council Chalet along U.S. 41.

**Calumet Theatre.** In 1898, the Village of Red Jacket (now Calumet) enlarged its town hall with the addition of a 1,200 seat opera house, one of the nation's first municipal theaters. 340 Sixth Street. Guided tours mid-May to mid-October, 11 a.m. to 3 p.m. Tuesday through Sunday. (906) 337-2610  
**Upper Peninsula Fire Fighters Memorial Museum** is housed in the former Red Jacket Fire Station, which was completed at the turn of the century. It houses exhibits related to a century of

fire-fighting history. 327 Sixth Street. Open June through September, 11 a.m. to 3:30 p.m. Monday through Saturday. (906) 337-4579  
**Coppertown USA Museum** operates out of a former Calumet and Hecla pattern shop building, the facility in which wood patterns for casting machine parts were made. Coppertown Museum provides an overview of the Calumet and Hecla story. 101 Red Jacket Road. Open June through September, 10 a.m. to 5 p.m. Monday through Saturday; also in July and August, 1 to 4 p.m. Sunday. (906) 337-4354  
**Keweenaw Heritage Center** is currently being developed in the former St. Anne's Church

building. It will preserve and interpret the area's heritage through exhibits and educational programs. Corner of Scott and Sixth Streets. Open mid-May to October, 9:30 a.m. to 5 p.m. Monday through Saturday; also July and August, 1 to 4 p.m. Sunday. (906) 337-4579  
**Laurium Manor Inn** is a 13,000-square-foot, 45-room mansion built by a wealthy mining captain in neighboring Laurium Village during the first decade of the 20th century. It was the largest and most opulent mansion in the Western Upper Peninsula. 320 Tamarack Street, Laurium. Lodging available year-round, and guided tours during summer months. (906) 337-2549

## Lake Superior

### FT. WILKINS STATE PARK

Built in 1844 to provide order on the Keweenaw frontier, Ft. Wilkins is a well-preserved example of a 19th-century military post. Explore the daily routine of military service through a number of restored buildings, museum exhibits and costumed interpreters.

Just beyond Copper Harbor on US-41. Open mid-May to mid-October, 8 a.m. to dusk daily. Modern campground. (906) 289-4215



### KEWEENAW COUNTY HISTORICAL SOCIETY MUSEUM

Shipping on Lake Superior was the lifeline of the Keweenaw in the early years. Eagle Harbor was one of the first ports developed on the Keweenaw. Learn about the ships and tour one of the lighthouses they depended upon.

In Eagle Harbor, along M-26, between Calumet and Copper Harbor. Open mid-June to October, 10 a.m. to 5 p.m. daily. (906) 289-4990

### COPPER RANGE HISTORICAL MUSEUM

The Copper Range Historical Museum, in the village of South Range, tells the stories of the Copper Range Mining Company and its workers. The nearby community of Painesdale is one of the best preserved company towns in the Keweenaw.

Downtown South Range. Open late May through late October, 11 a.m. to 4 p.m. Monday through Saturday. (906) 482-6125



### HOUGHTON COUNTY HISTORICAL MUSEUM

Located in the former mill office of the Calumet and Hecla Mining Company, the museum offers visitors a glimpse into the daily life of miners and their families. Numerous photos and exhibits.

Along M-26 in Lake Linden, between Hancock and Calumet. Open June through September, 10 a.m. to 4:30 p.m. Monday through Saturday; 1 to 4 p.m. Sunday. (906) 296-4121

### HANKA HOMESTEAD

A goal of many Finnish immigrants to the Keweenaw was to work in the mines until they could afford to buy or homestead their own small, self-sufficient farm. The Hanka Homestead preserves just such a small farm, largely unaltered since the early 1900s.

Eight miles south of Chassell on U.S. 41, turn west on Arnheim Road and follow signs. Open June through August, noon to 4 p.m. Tuesday, Thursday, Saturday, and Sunday. By appointment through September. (906) 334-2601



### DELAWARE COPPER MINE

One of the oldest mines on the Keweenaw, the Delaware offers underground and surface tours.

Along U.S. 41 between Calumet and Copper Harbor. Open daily mid-May to mid-October; 10 a.m. to 6 p.m. June, July and August; 10 a.m. to 5 p.m. May, September and October. (906) 289-4688





# Visitors' Guide to Keweenaw National Historical Park and surrounding area

**K**eweenaw National Historical Park is part of the National Park System, which includes 385 parks that are important examples of our nation's natural and cultural heritage. The Calumet and Quincy units of the park contain about 1,700 acres, most of which are, and will remain, in private ownership. Currently, no Keweenaw National Historical Park visitor facilities are operated by the National Park Service. However, Cooperating Sites are scattered across 100 miles of the Keweenaw Peninsula. (See center section.) These sites—a mix of public, private non-profit, and private for-profit operations—are working with the National Park Service to provide interpretive and visitor services. Hours and days of operation at Cooperating Sites vary with the season. Greatest visitor activity occurs from Memorial Day through early October, to the end of the color season. Interpreters, often in period costume, are at most of the Cooperating Sites during the summer. Winter activities are from late November through the end of March. The Keweenaw Tourism Council is currently acting as the information office for Keweenaw National Historical Park.

## Visitor Information

For park information, check our web site, [www.nps.gov/kewe](http://www.nps.gov/kewe); phone individual cooperating sites (see below); or call the Keweenaw Tourism Council with offices on Sheldon Avenue in downtown Houghton, 482-2388, and on U.S. 41 in Calumet, 337-4579. The toll-free, long-distance number for the Tourism Council is (800) 338-7982.

In Calumet, brochures describing walking tours of the commercial and residential areas are found at many locations. Information about current activities is also available in the Houghton-Hancock area on the Keweenaw National Park Travelers' Information Radio, at 1610 on the AM dial.

## Cooperating Site Phone Numbers

A.E. Seaman Mineral Museum—Houghton: (906) 487-2572  
 Calumet Theatre—Calumet: (906) 337-2610  
 Copper Range Historical Museum—South Range: (906) 482-6125  
 Coppertown USA Museum—Calumet: (906) 337-4354  
 Delaware Copper Mine: (906) 289-4688  
 Hanka Homestead: (906) 353-7116  
 Houghton County Historical Museum—Lake Linden: (906) 296-4121  
 Keweenaw County Historical Museum—Eagle Harbor: (906) 289-4990  
 Keweenaw Heritage Center (St. Anne's)—Calumet: (906) 337-4579  
 Fort Wilkins State Park—Copper Harbor: (906) 289-4215  
 Laurium Manor Inn—Laurium: (906) 337-2549  
 McLain State Park: (906) 482-0278  
 Old Victoria: (906) 886-2617  
 Porcupine Mountains Wilderness State Park: (906) 885-5275  
 Quincy Mine Hoist & Underground Mine—Hancock: (906) 482-3101  
 U.P. Fire Fighters Memorial Museum—Calumet: (906) 337-4579

## Fees

Each Cooperating Site manages its own admissions policy and fee structure. A daily or annual motor vehicle pass is required to enter Ft. Wilkins, Porcupine Mountains Wilderness and McLain state parks.

## Other Regional Attractions

Houghton is the headquarters of Isle Royale National Park, (906) 482-0984, an isolated wilderness island about 50 miles by water from the Keweenaw. Pictured Rocks National Lakeshore, (906) 387-2607, is about three hours east of the Keweenaw. Apostle Islands National Lakeshore, (715) 779-3397, is about three hours west of the Keweenaw. The Ottawa National Forest, (906) 932-1330, is just south of the Keweenaw Peninsula. Information about traveling throughout Michigan's Upper Peninsula may be obtained from the Upper Peninsula Travel and Recreation Association, (800) 562-7134.

## Directions

The Quincy Unit of the park is located just north of Hancock along U.S. 41. The Calumet Unit is located in and around the village of Calumet, about eight miles north on Highway 41. Directions to the Cooperating Sites may be obtained from the Keweenaw Tourism Council, or from the "tour map" in the center section of this publication.

## Special Events

A rich variety of programs and special activities occurs throughout the Keweenaw Peninsula all year, celebrating the rich human and natural heritage of the area. Information about upcoming events is available from the Keweenaw Tourism Council, (800) 338-7982, or in the Houghton-Hancock area on the Keweenaw National Park Travelers' Information Radio, at 1610 on the AM dial.

## Transportation

Daily scheduled air service is provided to the Houghton County Memorial Airport (CMX) by Northwest Airlink, (800) 225-2525. Charter bus service is available through Superior Coaches & Delivery of Houghton, (906) 487-6511. Inter-city bus service is provided by Greyhound Bus Lines, (800) 231-2222. Cab service is available in the Calumet, Hancock and Houghton areas. Rental cars are available at the airport and from auto dealers. During summer months, excursion boats operate on the Keweenaw Waterway.

## Reservations & Permits

Advance reservations are recommended for performances at the Calumet Theatre, although tickets may be available at the door. Tickets for the Quincy Mine Tour often sell out during July and August. Consequently, it is recommended that visitors drop by the Quincy Hoist Gift Shop early in the morning to purchase tickets for later in the day. Reservations for modern campgrounds at Ft. Wilkins State Park, McLain State Park and Porcupine Mountains Wilderness State Park may be made by calling (800) 543-2937. (This is also the phone for statewide travel information.) Cabin rentals are also available at McLain and Porcupine Mountains, and permits may be obtained for backcountry camping in the Porcupine Mountains.

## Trails & Roads

Hiking and cross-country ski trails are available at *Ft. Wilkins State Park*, *McLain State Park* and *Porcupine Mountains Wilderness State Park*. Extensive ski trails at the Porkies are served by the chairlifts for the downhill ski area. The *Swedetown Ski Trails*, adjacent to the Calumet unit of Keweenaw National Historical Park, provide a section of lighted trails. Hundreds of miles of groomed snowmobile trails also run through the Keweenaw. During the summer, a number

of these trails, along with lightly traveled rural roads, provide an excellent network for mountain and road bikes; and a water trail for paddlers and small power craft has been developed along Torch Lake and the Keweenaw Waterway. Good highways connect the Cooperating Sites, providing a scenic overview of the natural and human history of the area. The *Brockway Mountain Drive*, near Copper Harbor, is consistently rated as one of the top scenic drives in the United States.

## Lodging & Camping Facilities

A full range of hotels, motels, bed and breakfast inns, public and privately operated cabin rentals and campgrounds are found throughout the Keweenaw Peninsula. Contact the Keweenaw Tourism Council, (800) 338-7982, for details.

## Food & Supplies

A full range of restaurants, groceries, general merchandise and specialty stores are found throughout the Keweenaw. The major commercial services are found in the Houghton-Hancock and Calumet areas.

## Accessibility

Most of the Cooperating Sites are accessible to the handicapped, although chair users may require some assistance. Most restaurants are accessible, as are most hotels and motels. Detailed information may be obtained from the Keweenaw Tourism Council and the ADA Resource Network of the Keweenaw, at (906) 482-4477.

## Health Care

Primary physician care, urgent care, and hospital emergency and acute care are available in the Calumet-Laurium area through **Keweenaw Memorial Medical Center**, (906) 337-6500, and in the Houghton-Hancock area through **Portage Health System**, (906) 483-1000. A **Western Upper Peninsula Dialysis Center** is located on the Portage Health System medical campus near the Hancock unit of the park.

## Private Property

The National Park Service owns 140 acres within the park boundaries. The remaining 1560 acres are privately owned, and visitors are therefore asked to respect private property rights. Many important industrial buildings of the Quincy Mining Company and the Calumet and Hecla Mining Company are in declining physical condition. Entry into these buildings, without the consent of the owners, is illegal and may be very hazardous.

## Recommended Stay

Three days should be allowed to visit all Keweenaw National Historical Park's Cooperating Sites.

*The Ingot is published by Keweenaw National Historical Park as a service to visitors and residents of the Keweenaw Peninsula. To contact the park superintendent's office, you may phone (906) 337-3168 (voice) or (906) 337-3169 (fax); send an email to [kewe\\_superintendent@nps.gov](mailto:kewe_superintendent@nps.gov); or mail Keweenaw National Historical Park, Post Office Box 471, Calumet, MI 49913.*

## About Our Weather

Lake Superior controls the Keweenaw's weather year-round. Early summer can be quite cool, especially near Lake Superior. By mid-summer, temperatures are usually mild, with daytime highs in the mid to upper 70s (F) and cool nights. September and October normally continue quite mild. Colors peak from the last week of September to the first week of October. Brief, light snows may occur, but the temperature quickly rises, moderated by the waters of Lake Superior at their warmest annual level. True winter snows begin in mid to late November; the ground is normally covered from Thanksgiving to Easter. Lake Superior's gradually cooling waters create an average annual snowfall which ranges from about 180 inches to 250 inches in different parts of the peninsula. While creating abundant snowfall, the relatively warm lake waters keep temperatures much milder than in surrounding areas of Minnesota and Ontario. Spring is a season which is relatively foreign to the Keweenaw.