



CELEBRATE THE NATIONAL PARK SERVICE CENTENNIAL

With the combined effort of over 25 parks and organizations in the Grand Circle area of Arizona, Nevada and Utah; PARKS100 is celebrating the National Park Service Centennial in a new way. We have created a community, locally and online, to help you explore more of our area and find all types of parks, as well as local Centennial events, suggested itineraries, visitor centers, and our hidden gems. Visit www.parks100.com.



PLAN YOUR VISIT AT OUR LOCAL VISITOR CENTERS

Baker, Nevada

Highway 487
(775) 234-7331
www.nps.gov/grba

Page, Arizona

6 North Lake Powell Blvd.
(928) 645-9496
visitpagelakepowell.com

Cedar City, Utah

581 North Main Street
(435) 586-5124
www.visitcedarcity.com

Panguitch, Utah

55 South Main
(800) 444-6689
brycecanyoncountry.com

Kanab, Utah

78 South 100 East
(800) 733-5263
www.visitsouthernutah.com

St. George, Utah

1835 Convention Center Dr.
(800) 869-6635
www.visitstgeorge.com



SHARE YOUR STORY USING #PARKS100

PARKS100 is here to help you find the parks in the Grand Circle area of Arizona, Nevada, and Utah; encouraging visitors to not only see our popular National Parks, but to venture out of the well-traveled zone and Explore Five More™. As you discover the area, share your story using #PARKS100 on Facebook, Twitter and Instagram.

To Find Your Park™ and Explore Five More™ go to:

WWW.PARKS100.COM



NATIONAL PARK CENTENNIAL EVENTS HAPPENING IN 2016

Throughout 2016 the parks and organizations within PARKS100 will be celebrating and enjoying the National Park Service Centennial with a variety of events. For a full list, dates, information, directions and costs visit www.parks100.com.



2016 FEE FREE DAYS ON FEDERAL LANDS

Bureau of Land Management

Jan 18, Feb 13-15, Sept 24, Nov 11

National Park Service

Jan 18, April 16-24, Aug 25-28, Sept 24, Nov 11

US Fish & Wildlife Service

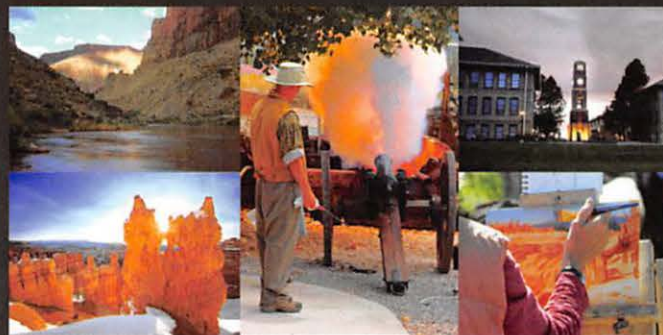
Jan 18, Feb 13-5, Sept 24

National Public Lands Day

Oct 9, Nov 11-13

US Forest Service

Jan 18, Feb 15, June 11, Sept 24, Nov 11



Above Photos from left to right: Kanab, UT, Frontier Homestead State Park, Southern Utah University, Plein Air Event at Cedar Breaks National Monument, Bryce Canyon National Park

Cover Photos from top to bottom: Great Basin National Park, BLM Basin & Range Region, Horseshoe Bend, Pipe Spring National Monument, Coral Pink Sand Dunes State Park.

FIND YOUR
PARK

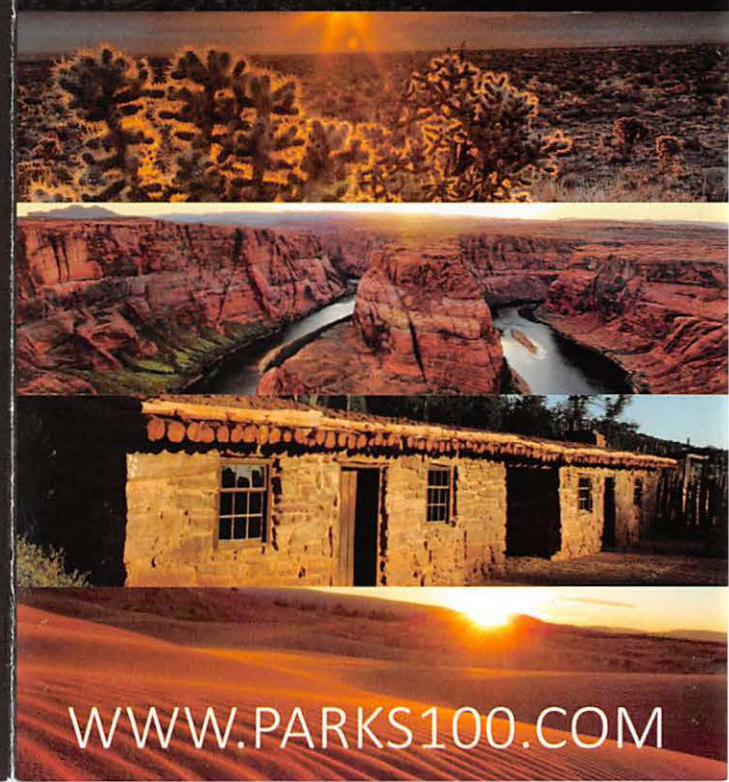
2016
National Park Service
CENTENNIAL

EXPLORE

5

MORE

IN ARIZONA, NEVADA & UTAH



WWW.PARKS100.COM



VENTURE OUT & EXPLORE FIVE MORE™

Don't miss our hidden gems! Within a short drive of each of our beloved national parks are five more incredible outdoor places to explore. Make them part of your journey...

BRYCE CANYON NATIONAL PARK

- Dixie National Forest (Surrounding)
- Kodachrome Basin State Park (20 min)
- Escalante Petrified Forest State Park (1.25 hr)
- Anasazi State Park (1.5 hr)
- Fremont Indian State Park (1.5 hr)

CEDAR BREAKS NATIONAL MONUMENT

- Dixie National Forest (Surrounding)
- Frontier Homestead State Park Museum (45 min)
- Parowan Gap Petroglyphs (45 min)
- Southern Utah University (45 min)
- Kolob Canyons, Zion National Park (1 hr)

GLEN CANYON NATL RECREATION AREA

- Horseshoe Bend (10 min)
- Grand Staircase-Escalante Natl Mon (45 min)
- Vermilion Cliffs National Monument (1.5 hr)
- Grand Canyon North Rim (1.75 hr)
- Rainbow Bridge Natl Monument (3 hr by boat)

GRAND CANYON NORTH RIM

- Kaibab National Forest (Surrounding)
- Vermilion Cliffs National Monument (1.5 hr)
- Pipe Spring National Monument (1.75 hr)
- Coral Pink Sand Dunes State Park (2.25 hr)
- Glen Canyon National Recreation Area (2.5 hr)

GRAND STAIRCASE NATIONAL MONUMENT

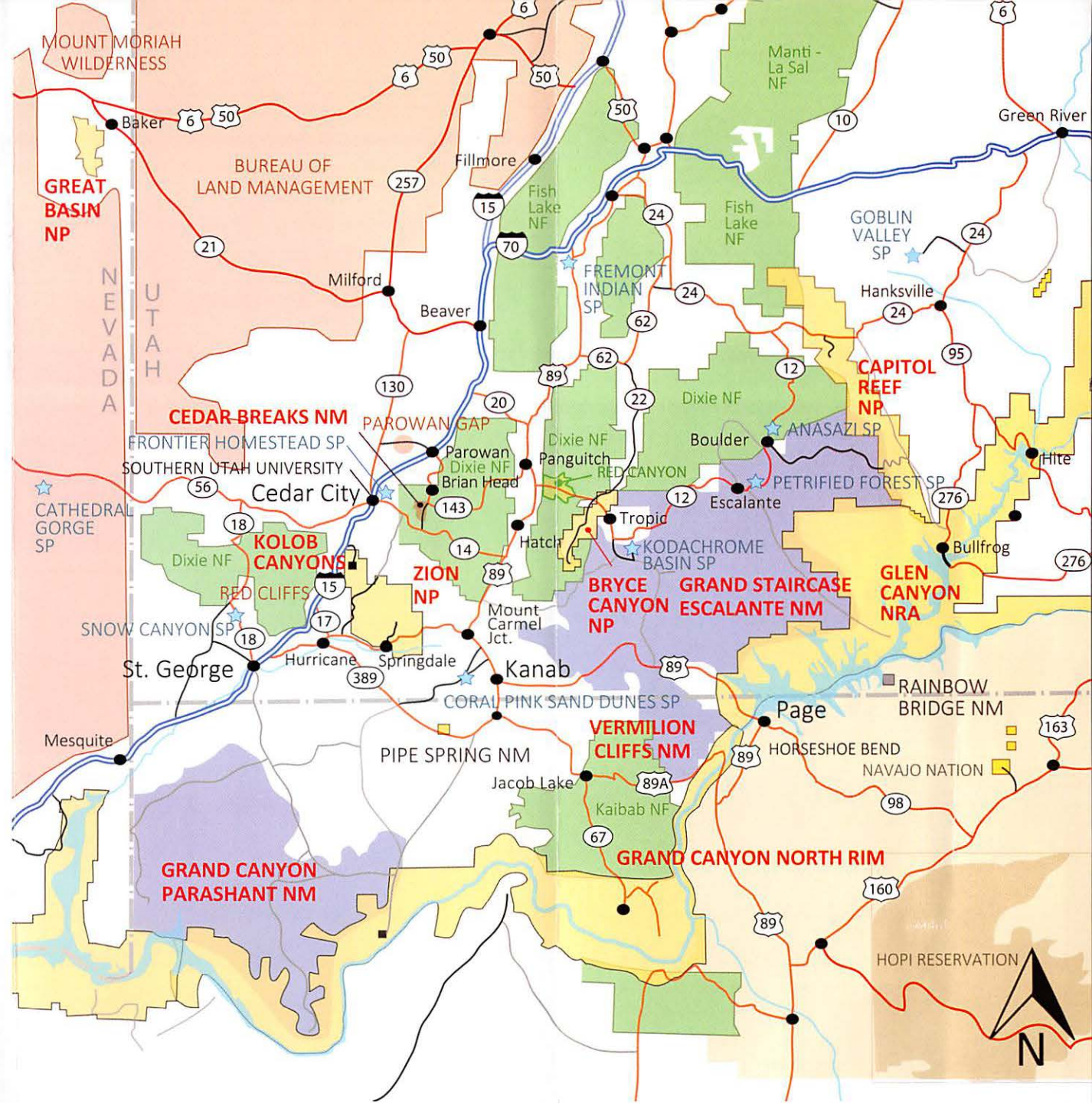
- Anasazi State Park
- Escalante Petrified Forest State Park
- Kodachrome Basin State Park
- Coral Pink Sand Dunes State Park (40 min)
- Vermilion Cliffs National Monument (1 hr)

GREAT BASIN NATIONAL PARK

- Mount Moriah Wilderness Area (1 hr)
- Sulphur Wild Horse HMA (1 hr)
- Cathedral Gorge State Park (2 hr)
- Frontier Homestead State Park (2.75 hr)
- Ward Charcoal Ovens State Park (1 hr)

ZION NATIONAL PARK

- Coral Pink Sand Dunes State Park (50 min)
- Red Cliffs Recreation Area (50 min)
- Pipe Spring National Monument (1 hr)
- Snow Canyon State Park (1 hr)
- Grand Canyon-Parashant Natl Monument (1.5 hr)



WWW.PARKS100.COM

