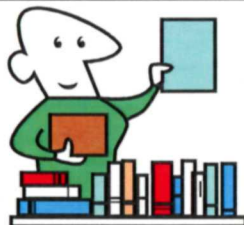


## Our Top 10 Resources



**1. Voyager catalog online at  
NPS Library website**

<http://www.library.nps.gov>

**2. Mt. Rainier archives**

**3. Topo maps**

**4. NPS statistics**

<http://ww2.nature.nps.gov/stats/>

**5. U.S. Gov't Web Portal**

<http://www.firstgov.gov>

**6. Statutes at large  
(legislative information)**

**7. DSC Technical  
Information Center**

**8. Journal of American History**

**9. Pacific West Regional  
Website** [http://www.nps.gov/  
ccso/library/library.htm](http://www.nps.gov/ccso/library/library.htm)

**10. Fantastic Librarians!**

## Library Contact Information

General Information/Reference  
Email: [ccso\\_library@nps.gov](mailto:ccso_library@nps.gov)

Contact: Nancy Hori  
Librarian  
Phone: (206) 220-4154  
Fax: (206) 220-4151  
Email: [nancy\\_hori@nps.gov](mailto:nancy_hori@nps.gov)

Richard Aroksaar  
Automation Librarian  
Phone: (206) 220-4252  
Fax: (206) 220-4151  
Email: [richard\\_aroksaar@nps.gov](mailto:richard_aroksaar@nps.gov)

Edith Miller  
Cataloging Librarian  
(206) 220-4114  
Fax: (206) 220-4151  
Email: [edith\\_miller@nps.gov](mailto:edith_miller@nps.gov)

Mary Ellen Bartholomew  
Librarian  
Phone: (206) 220-4253  
Fax: (206) 220-4151  
Email:  
[mary-ellen\\_bartholomew@nps.gov](mailto:mary-ellen_bartholomew@nps.gov)



Mount Rainier National Park, Ranger Keith Miller and his Park patrol car, circa 1950s. Photo courtesy of NPS Historic Photograph Collection.

Brochure created 02/2004



What can the NPS  
Pacific West  
Regional library  
do for you?

*Find out about our  
valuable  
information resources  
in person or just a  
phone call or email  
away.*

*Borrowing privileges  
and full library services  
are extended to all NPS  
employees stationed in  
the Pacific West Region.*



*The Wawona Tunnel Tree, Yosemite National  
Park, 1929. Photo courtesy of the National Park  
Service Historic Photograph Collection.*

## The NPS Collection

### Reference Tools include

- ✓ Maps, almanacs, field guides, statistics, statutes, and archives.

### Journals

- ✓ Contact the library for a full list. Titles include *Audubon*, *CRM*, *Conservation Biology*, *Ecological Restoration*, *Ecology*, *Environmental Law*, *Journal of American History* and *National Parks*.

### Databases

- ✓ Access to GEOREF, Wildlife & Ecology, Agricola and more. These are restricted to reference services with a librarian only, so please give us a call if you need research assistance.
- ✓ Voyager online catalog.

### Other Resources

- ✓ Online resources, bibliographies, microfilm and some videos and DVDs.



## Library Services

### For all NPS Employees

Save Time & Ask us!

Discover the magic of reference services.

- ✓ Reference by phone, email, fax or in person.
- ✓ Request articles from any NPS library through Interlibrary Loan.
- ✓ Access NPS reports, facts and figures.
- ✓ Need to do some research for a report or event? We can help! Ask about our research services.
- ✓ Interlibrary Loan.

We are a collection of small libraries so we rely on each other to get you the information you need. We can borrow physical materials like books or get articles copied and sent to you via email or regular mail.

### For NPS Libraries

- ✓ We catalog all park collections.
- ✓ Travel to parks to assist in library development, planning, and inventory.
- ✓ Provide Library Management help.

### For Visitors

Walk-ins are welcome. NPS employees are our first priority, but our offices are open to the public and we encourage visitors to explore our collection.

## Examples of how we have helped NPS

### Example reference questions

*What is the attendance at the parks?*

*Do you have any information on the Amelia Crown Mine in Chelan County?*

*How did Coon Lake get its name?*

### Example literature searches

- ✓ Bat migration
- ✓ Riverbank restoration
- ✓ Southwest willow flycatchers

### Research examples

*Who are possible funders for park special projects?*

*Can you locate examples of monitoring protocols used by national parks? —*

The NPS Librarian was looking for a printed document and discovered it was outdated. In the process of further searching, the librarian came in contact with another NPS employee who was researching the same topic. The library was responsible for connecting the two NPS employees in order to share information.