



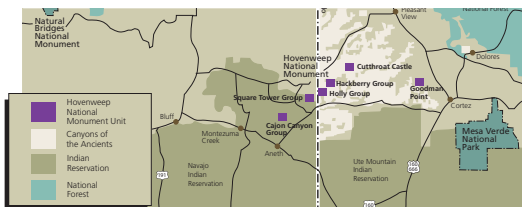
*"The National Park Service, more than any other national entity, has the responsibility for our nation's history, ideals, values, and beloved resources. We are our nation's storytellers, and as such we have the responsibility to get the story straight and to enlighten, enliven, and embrace."*

*-BJ Johnson*

**The Denver Service Center (DSC) Planning Division is looking toward the future and providing the necessary people and ideas to influence positive changes within park planning processes, products, and services.**

We are working with the Washington Office and regional and park planners to analyze and improve the general management plan critical path and the park planning framework.

We are continuing to expand the skill set of our workforce to meet the changing needs of parks and park planning, taking leadership roles in climate change, sustainability, energy management, facility management planning, heritage management planning, commercial services planning, spatial and graphic communication, the integration of planning and science, updated NEPA processes within planning, and more effective community involvement.



## DENVER SERVICE CENTER PLANNING DIVISION

**DIVISION CHIEF**  
Barbara J. Johnson

**(303) 969-2208**

**ADMINISTRATION**  
Muehl, Sheri  
Allen, Lindy

(303) 969-2310  
(303) 969-2230

**PUBLICATIONS BRANCH**  
Ray, Linda (Branch Chief)

**(303) 969-2523**

Corbett, James  
Eitel, Ruth  
Fischer, Christy  
Heronema, Glenda  
Joseph, Damien  
McMillen, June

(303) 969-2923  
(303) 969-2548  
(303) 969-2943  
(303) 969-2125  
(303) 987-6654  
(303) 969-2352

**PLANNING BRANCH (PWR, SER)**  
Kenney, Pat (Branch Chief)

**(303) 969-2674**

Bodo, Sarah  
Coburn, Andrew  
D'Arcy, Michele  
Jarvis, Greg  
Malone, Patrick  
Miller, Christina  
McVeigh, Mary  
Nofield, Stephan  
Rees, Michael

(303) 969-2219  
(303) 969-2725  
(303) 969-2485  
(303) 969-2263  
(303) 969-2415  
(303) 969-2457  
(303) 969-2360  
(303) 969-2253  
(303) 969-2198

**PLANNING BRANCH (IMR, AK, NCR)**  
Kreger, Dave (Branch Chief)

**(303) 987-6726**

Atkins, Tracy  
Flanagan, Erin  
Gibney, Tom  
Nelson, Cynthia  
Read, Larissa  
Safford, Matt  
Thomas, Tom  
Ward, Gretchen  
Spain, Susan

(303) 969-2325  
(303) 969-2327  
(303) 969-2479  
(303) 987-6652  
(303) 969-2472  
(303) 969-2898  
(303) 969-2389  
(303) 969-2254  
(202) 245-4692

**PLANNING BRANCH (MWR, NER)**  
Harris, Jan (Branch Chief)

**(303) 969-2435**

Cahill, Kerri  
Cellar, Craig  
Church, Chris  
McConnell, Carla  
Randall, Kate  
Sharp, Ryan  
Stuebe, Miki  
Van Huizen, Ann  
Whissen, Steve  
Wojcik, Don

(303) 969-2261  
(303) 969-2417  
(303) 969-2276  
(303) 969-2287  
(303) 969-2237  
(716) 289-6107  
(303) 969-2437  
(303) 969-2451  
(303) 969-2380  
(303) 969-2399

**BUDGET COORDINATION**

Peterson, Leslie  
George, Susan  
Weskamp, Mary

**(303) 969-2323**  
(303) 969-2933  
(303) 969-2106

[www.nps.gov/dsc](http://www.nps.gov/dsc)

<http://planning.nps.gov>

## NATIONAL PARK SERVICE DENVER SERVICE CENTER PLANNING DIVISION



Influencing  
**positive changes in  
park planning processes,  
products, and services**

throughout the  
National Park System

**The DSC Planning Division has the experience to meet your park planning needs.**

The DSC Planning Division has the largest multidisciplinary park planning staff in the National Park Service. We have staff landscape architects, architects, natural resource specialists, cultural resource specialists, planning professionals, outdoor recreation specialists, a professional engineer, and visitor use specialists.

DSC staff have excellent contract oversight and contracting services.

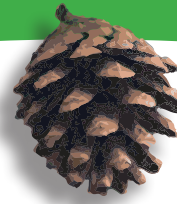
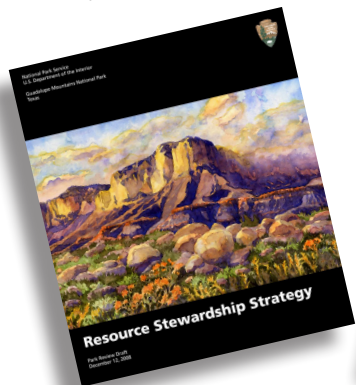
Our graphics professionals have more than 100 years of combined experience in a variety of visual arts including fine art, illustration, and computer-generated graphic design.

Many of our staff have worked in various park system units and other federal agencies, including USFS, USFWS, BLM, EPA, and FAA, as well as private firms and city and county planning agencies.

Combined, the staff have contributed to and/or led management plans, special resources studies, feasibility studies, heritage area studies, resource stewardship strategies, river studies, trails studies, wilderness studies, commercial services plans, etc., for nearly half of our nation's park units.

**DSC Planning is functionally aligned with regional clients.**

Each branch chief is a liaison for specific regions. With their knowledge and experience, our project managers and project specialists provide the capacity for accomplishing your park planning needs. The project managers are trained and prepared to oversee contracted work or to lead internal teams as necessary.



**DSC Planning Division Vision**

We are the first-choice provider for integrated mission-based park planning. We are the leader in the innovative use of technology, tools, and techniques to create useful and accessible planning products and services. We effectively engage our diverse audiences and value their ideas in all aspects of park planning and decision making within our system of national parks. We have a diverse workforce of client-focused strategic thinkers who are empowered and energized by working in a collaborative environment.

**The DSC Planning Division has the knowledge to get the job done.**

Our staff members have a wide range of education in Architecture, Planning, Cultural Resources, Economics/Business, Editing, Engineering, Graphic Design, Landscape Architecture, and Public Policy.

Division staff have Ph.D Degrees in Archeology, History, and Natural Resource Recreation Management.

Our staff have received Master's Degrees in Anthropology, Architecture, Community and Regional Planning, Construction Management, Environmental Science, Historic Preservation, History, Landscape Architecture, Land Resource Planning, Public Administration, Resources Law Studies, and Urban and Regional Planning.

Our staff have Bachelor's Degrees in Anthropology, Art, Biology, Business Administration, Business Marketing, Commercial Art, Economics, Environmental Biology, Environmental Conservation, Environmental Policy, Environmental Resource Management, Environmental Studies, Forest Resource Management, Geography, Geology, History, International and Environmental Studies, Journalism, Landscape Architecture, Political Science, Science, Science in Commerce, Studio Arts/Humanities, Wildlife and Fisheries, and Zoology.

**Staff certifications include the following:**

- Project Management Professionals (PMP)
- Certified Park and Recreation Professional (CPRP)
- U.S. Contracting Officer's Representatives (COR)
- Licensed Architect, Colorado
- Registered Engineer
- Licensed Landscape Architects
- Member American Institute of Certified Planners (AICP)

