

Signs Protect Visitors and Resources

Millions of people visit national wildlife refuges each year. The impact of human activity, if not regulated, can degrade these wildlands. Signs control recreational activities while protecting natural resources on the refuge. Please respect the following signs.



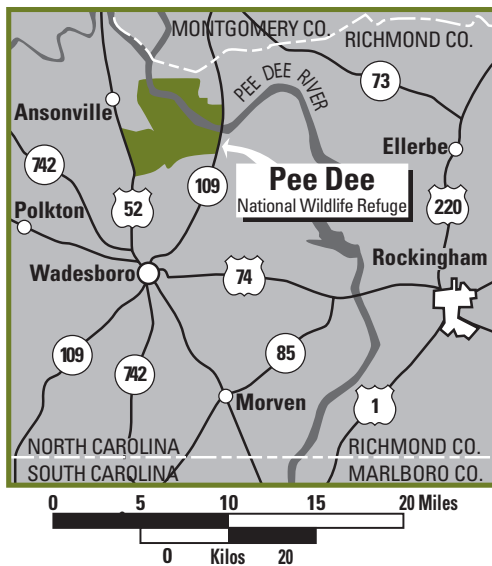
This sign delineates the refuge boundary. Entry is permitted only for authorized uses (hunting, fishing, sightseeing, etc.) in accordance with refuge regulations.



This area is closed to all entry. No hunting, fishing or sightseeing is permitted. No roads or trails are open to the public (see map).



This area is closed to all hunting (see map).



Pee Dee
National Wildlife Refuge
5770 Highway 52 North
Wadesboro, NC 28170
704/694 4424
http://www.fws.gov/refuge/pee_dee/
<http://southeast.fws.gov>

email: peedee@fws.gov
U.S. Fish & Wildlife Service
1 800/344 WILD

July 2019



U.S. Fish & Wildlife Service

Pee Dee

National Wildlife Refuge Public Use Regulations and Hunting Permit 2019-2020

General Hunting Permit 2019-2020

The signing of this leaflet validates it as your general refuge hunting permit and must be in your possession while participating in all authorized hunts.

I have read and understand these refuge regulations.

Hunter's Signature _____ Not valid until signed

This permit valid only from September 1, 2019 through June 30, 2020.

Welcome to Pee Dee National Wildlife Refuge

Pee Dee National Wildlife Refuge is one of over 550 national wildlife refuges. The U.S. Fish and Wildlife Service administers the refuge and is responsible for conserving, protecting, and enhancing the nation's fish and wildlife populations and their habitats for the continuing benefit of the public.

The provisions listed below supplement the general regulations that govern public use on national wildlife refuges, as set forth in Title 50, Code of Federal Regulations. When permitted, hunting, fishing and other public uses will be in accordance with applicable state laws unless otherwise listed. Only the hunting seasons designated in this brochure are allowed on Pee Dee National Wildlife Refuge.

General Provisions and Access

By law, national wildlife refuges are closed to all public use activities unless permitted. Hunting, fishing and other public use activities are permitted on most areas of the refuge. Contact the Refuge Manager for current regulations and authorized activities when visiting the refuge.

Public Entry

- The refuge is closed daily from one hour after sunset until one hour before sunrise except as authorized during designated hunts.
- Entry onto Pee Dee National Wildlife Refuge constitutes consent to an inspection of licenses, permits, vehicles, game bags, creels, coolers and all hunting and/or fishing equipment.

Pets

- Pets must be under the control of the owner at all times.

Camping and fires

- Camping and fires are prohibited.

Horseback riding

- A special use permit is required for horseback riding on the refuge. Contact the refuge office to apply.
- Horseback riding is allowed only on roads that are open to public vehicle traffic.
- Hunting from horseback is prohibited.

Alcoholic beverages

- The use or possession of alcoholic beverages is prohibited.

ATV's/Four Wheelers

- ATV's are prohibited except for use by disabled persons with a refuge special use permit.

Roads

- Vehicles must remain on established roads as indicated on the map of this brochure.
- Visitors may park alongside roads in a manner that will not block gates and fire lanes, or interfere with traffic.
- The speed limit on refuge roads is 15 mph, unless posted otherwise.
- Hunting on, from or across any road open to public vehicle traffic is prohibited.
- On small game hunts, hunting is prohibited on roads open to public vehicle traffic. This includes the right-of-way, which extends 30 feet from the center of the road.
- On deer and turkey quota hunts, hunting is prohibited **within 100 feet** of any vehicle or road open to public vehicle traffic.

Disabled access

- Persons with disabilities who have special access needs should contact the Refuge Manager to request special use access.

Weapons

- Discharging firearms, air guns, bows and arrows, or cross bows is prohibited unless authorized.
- **All refuge hunting is closed on Sundays.**

Closed Areas/No Hunting Zones

- **Refuge hunting areas are closed to the general public during all firearms deer hunts.** The "No Hunting Zone" around Headquarters and Sullivan Pond remains open all year.
- Designated areas are closed seasonally to hunting, fishing and all other public access.
- Other areas may be closed for management or safety reasons.
- Hunters are prohibited from entering or crossing a "No Hunting Zone" or "Closed Area" to access hunting areas.
- Discharging a Firearm within, into or across a "No Hunting Zone" or "Closed Area" is prohibited.

Refuge/cultural resources

- The removal of any natural, historic or archaeological feature is prohibited.

Special Hunting Regulations

Permits

- Hunters must possess a valid, signed refuge General Hunting Permit for all hunts.

- Quota hunt permits are required for all firearms deer and turkey hunts. Apply for quota hunts online at: <https://peedee.recaccess.com>
- Permits are non-transferable.
- Hunters must possess all applicable licenses, permits and government-issued picture ID while in the field.

Check station

- The Check Station is located at Headquarters on Highway 52 North.
- **All deer and turkeys killed on the refuge must be checked in** at the refuge check station on the date of the kill prior to removing the animal from the refuge. **This includes archery.**
- Deer and turkeys killed on the refuge must also be registered with the state of NC by calling 1-800-I-GOT-ONE. Refuge and NC records will be compared to make sure that your game has been properly checked in.
- If no employees are present at the check station, follow posted self-check in procedures.

Baiting

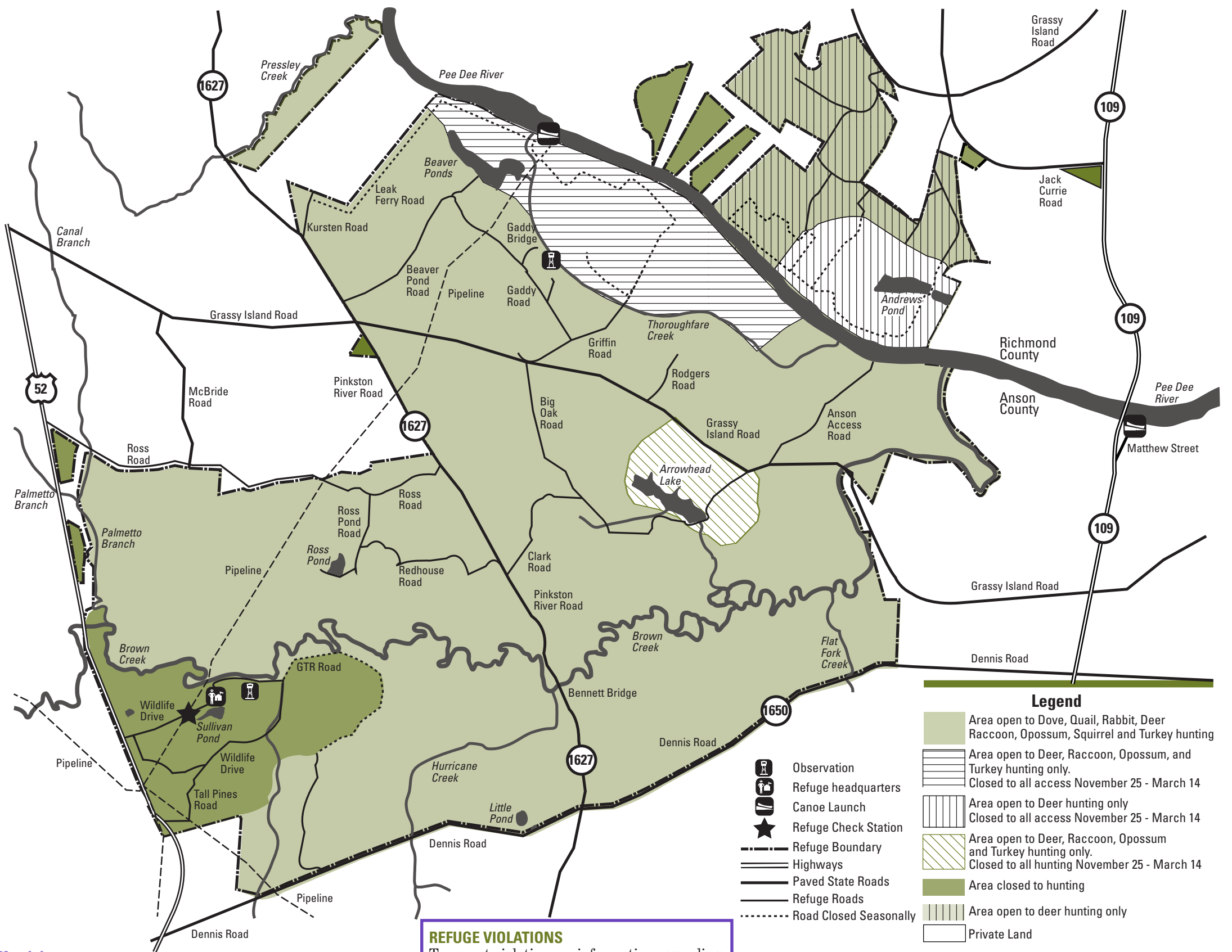
- Baiting and/or hunting in the vicinity of bait is prohibited.
- Baiting is defined as the placing of corn or other food stuffs, including salt and mineral blocks, to constitute an attraction for wildlife to any area.

Hunter orange

- **All persons participating in refuge firearms deer hunts are required to wear an outer garment above the waist which contains a minimum of 500 square inches of unbroken fluorescent orange material that is visible from all sides while hunting and while enroute to and from hunting areas.**
- All persons participating in the late refuge archery deer hunt must wear at a minimum, a fluorescent orange hat while hunting and while enroute to and from hunting areas.

Hunter education

- **All refuge hunters under the age of 16 must show proof of successfully completing a hunter education/safety course.**
- Hunters under the age of 18 must be directly supervised (within sight and normal voice contact) by a properly licensed adult at least 21 years of age.



Legend

- Area open to Dove, Quail, Rabbit, Deer Raccoon, Opossum, Squirrel and Turkey hunting
- Area open to Deer, Raccoon, Opossum, and Turkey hunting only. Closed to all access November 25 - March 14
- Area open to Deer hunting only. Closed to all access November 25 - March 14
- Area open to Deer, Raccoon, Opossum and Turkey hunting only. Closed to all hunting November 25 - March 14
- Area closed to hunting
- Area open to deer hunting only
- Private Land

Observation
 Refuge headquarters
 Canoe Launch
 Refuge Check Station
 Refuge Boundary
 Highways
 Paved State Roads
 Refuge Roads
 Road Closed Seasonally

REFUGE VIOLATIONS
 To report violations or information regarding violations occurring on Pee Dee National Wildlife Refuge, call 704/694 4424.

- Youth hunts**
- A youth hunter is defined as a hunter under the age of 18.
 - Youth hunters must be at least 10 years old to participate in the deer or turkey youth/quota hunts.
 - During quota hunts, including youth hunts, an adult may supervise only one youth.
 - **On deer and turkey youth hunts, only one youth and one adult are allowed per permit.**
 - During small game hunts, an adult may supervise a maximum of two youths.
- Tree stands**
- Only portable stands are permitted.
 - Stands may be placed no more than four days prior to the opening day of your scheduled hunt.
 - Participants in the Youth Deer Hunt may place their stands up to seven days prior to the hunt.
 - Archery hunters must remove their stands by the final day of the hunt.
 - Quota hunters must remove their stands within 24 hours after the final day of their hunt.
 - Inserting or driving a nail, screw, spike or other metal object into a tree, or hunting from a tree into which a metal object has been inserted or driven is prohibited.
 - A safety belt or harness must be utilized while using a tree stand or climbing equipment.
- Hunting dogs**
- Dogs may not be used to run freely or locate game on non-hunting days.
 - Deer hunting with dogs is prohibited.
 - Dogs are permitted for small game and dove hunting.
 - Dogs are required for the raccoon/opossum hunts.
 - All dogs are required to wear a collar displaying the owner's name, address and phone number.
- Man-driving**
- Deer hunting by man-driving is prohibited.
 - Man-driving is defined as an organized hunting technique in which two or more hunters attempt to drive game animals from cover to shoot, kill, or move game towards other hunters.
- Tree marking and trail cameras**
- The use of unattended trail cameras is prohibited.

- Marking any tree or other refuge feature with flagging material or paint is prohibited.
 - Reflective clothespins may be used to mark trails, but must be removed at the end of each hunt.
- Deer and turkey hunt hours of access**
- Deer and turkey hunters are prohibited from entering the refuge prior to 4 am on scheduled hunt days.
 - Deer hunters must leave the refuge no later than two hours after legal sunset.
- Pre-hunt scouting**
- The refuge is open daily (except refuge firearms deer hunt days) for pre-hunt scouting.
- Hunting Seasons**
- Refuge areas open to hunting are designated on the map of this leaflet.
 - The following list includes the specific hunts allowed on the refuge.
 - Feral hogs may be taken during all established deer hunts, only by hunters legally participating in those hunts.
 - **All hunting is closed on Sundays.**
- Waterfowl**
- **No waterfowl hunting is allowed on the refuge. This includes the waters of the Pee Dee River from the confluence of Pressley Creek downstream to the confluence of Brown Creek.**
- Mourning dove**
- State opening day, Labor Day, Wednesdays and Saturdays during State season in September only.
 - Anson County only.
- Early archery deer**
- September 9 - October 4, 2019
 - Anson and Richmond Counties.
- Firearms deer**
- Hunters must have a drawn permit for the following hunts:
- **Either sex youth hunt (10-17 year olds):** October 5, 2019
 - ***Either sex disabled hunt:** October 11-12, 2019
 - **Either sex muzzleloader:** October 17-19, 2019

- **Either sex modern gun #1:** October 24-26, 2019
 - **Either sex modern gun #2:** October 31-November 2, 2019
 - **Either sex modern gun #3:** November 7-9, 2019
 - **Either sex modern gun #4:** November 14-16, 2019
- *For more information on the disabled hunt, contact the refuge office.
- Raccoon/opossum**
- October 14 - November 16, 2019 ■ Anson County only.
 - Mondays, Tuesdays, Wednesdays and Saturdays only; starting one hour after sunset.
- Squirrel**
- November 18 - December 7, 2019
 - Anson County only. ■ No fox squirrels.
- Late archery deer**
- December 9, 2019 - January 1, 2020
 - Anson and Richmond Counties.
- Quail**
- November 27, 2019 ■ December 7, 18 and 28, 2019
 - January 8, 18 and 29, 2020 ■ Anson County only.
 - **Attention: bag limit is two (2) quail per hunter**
- Rabbit**
- February 1-15, 2020 ■ Anson County only.
- Youth turkey (10 - 17 year olds)**
- April 4-11, 2020
 - Anson County only.
 - Hunters must have a drawn permit to participate in this hunt.
- Turkey**
- April 13-18, 2020 ■ April 20-25, 2020
 - Anson County only.
 - Hunters must have a drawn permit to participate in this hunt.
- Refuge Violations**
- To report violations or information regarding violations occurring on Pee Dee National Wildlife Refuge, call 704/694 4424