

Optima

National Wildlife Refuge Hunting and Fishing Regulations 2021–2022



Welcome

Located in the middle of the Oklahoma panhandle, the 4,333-acre Optima National Wildlife Refuge is made up of grasslands and wooded bottomland on the Coldwater Creek arm of the Army Corps of Engineers Optima Reservoir Project. These lands are managed for the benefit of wildlife and provide wildlife-dependent recreation, including wildlife watching, photography, and public hunting.

Accessibility

Walk-in access only.

Firearms

Persons possessing, transporting, or carrying firearms on National Wildlife Refuge System lands must comply with all provisions of State and local law. Persons may only use (discharge) firearms in accordance with refuge regulations (50 CFR 27.42 and specific refuge regulations in 50 CFR Part 32).

Vehicles

All vehicles must remain in designated parking areas. There are no public roads on the refuge. Blocking gates or roadways is prohibited. All-terrain vehicles (ATVs) are prohibited. ATVs or mechanized carts may not be used to remove harvested game animals.

Boats

The refuge does not allow boats. Fishing is prohibited.

Hunting and Fishing Regulations

Hunting and fishing regulations are designed to provide safe recreational opportunities through wise use of renewable wildlife resources. Hunting and fishing are permitted in accordance with Federal regulations governing public use on National Wildlife Refuges as set forth in Title 50 of the Code of Federal Regulations.”

Hunting and fishing will be in accordance with applicable State of Oklahoma regulations subject to the conditions stated below.

Access

WHEN: There are no restrictions on when visitors may access the refuge.

WHERE: Hunters must park at refuge parking areas. Hunters may access hunt areas only from designated parking areas. Please see map for parking area locations.

Fishing is prohibited.

Horses

Horseback riding is not allowed. The use of horses or mules to pack equipment or harvested animals is prohibited.

Tree Stands

Deer stands must be in accordance with Oklahoma Department of Wildlife Conservation regulations. Nails, screw-in steps, or other items that penetrate the outer bark of a tree are prohibited. Deer stands may be placed 30 days before season begins and must be removed 30 days after season ends.

Harvest Reporting

Requirements in accordance with State of Oklahoma Hunting Regulations

Optima NWR

Hunting Authorization 2021-2022

When signed and carried, this serves as your permit for all refuge hunts and acknowledges your understanding of the regulations contained herein. This authorization is valid only when signed below and must be carried with you at all times while on the refuge.

Expires August 31, 2022

Signature (authorizations are not transferable)

Hunt Type	Season Dates	Harvest	Hunt Areas	Other Regulations
White-tailed Deer	State seasons apply.	State regulations apply.	All refuge lands.	Deer hunting is archery only and closed during the first nine days of deer gun season. Deer stands must be in accordance with Oklahoma Department of Wildlife Conservation regulations. Deer stands may be placed 30 days before season begins and must be removed 30 days after season ends.
Turkey	State seasons apply. Spring turkey, youth spring turkey, and fall turkey hunting are permitted on the refuge.	State regulations apply.	All refuge lands.	Spring turkey and youth spring turkey hunting is shotgun and archery only. Fall turkey hunting is archery only and closed during the first nine days of deer gun season.
Quail	State seasons apply.	State regulations apply.	All refuge lands.	Quail hunting is restricted to archery and shotgun only.
Pheasant	State seasons apply.	State regulations apply.	All refuge lands.	Pheasant hunting is restricted to archery and shotgun only.
Dove	State seasons apply.	State regulations apply.	All refuge lands.	Dove hunting is restricted to archery and shotgun only.
Rabbit	State seasons apply.	State regulations apply.	All refuge lands.	Rabbit hunting is allowed with closures for the first nine days of deer gun season. All rabbit hunting is shotgun and archery only.
State hunting and fishing regulations, seasons, shooting hours, bag limits, and license requirements apply to all hunting on the Refuge.				

US 412 E Hardesty, OK 73944
580-664-2205
washita@fws.gov
<http://www.fws.gov/refuge/optima>
August 2021



Signs and Boundaries

- Please respect the following signs:
- No vehicles: All Traffic prohibited
- Parking area: Designated areas to park while hunting

Applies to the area located behind the sign

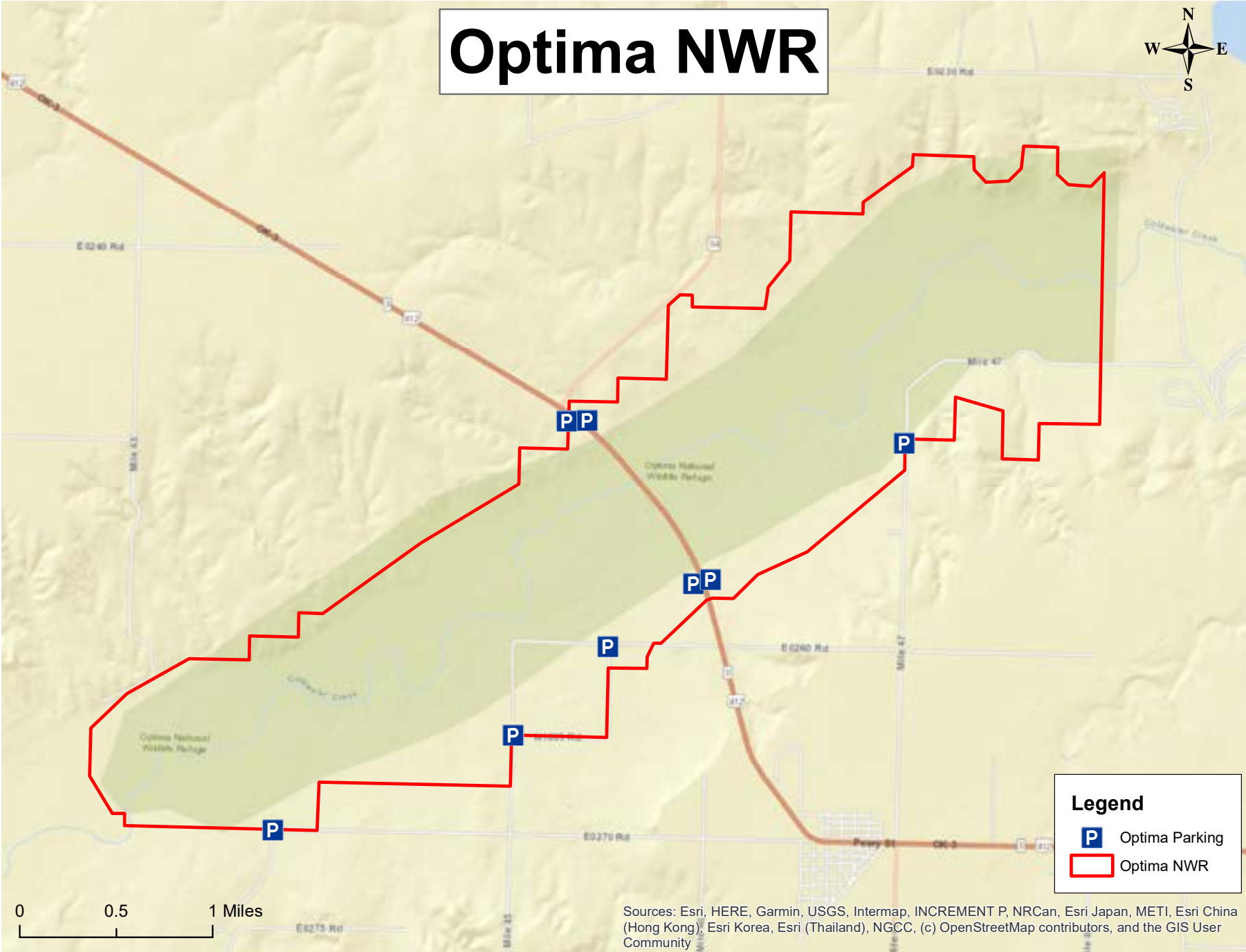
- Refuge Boundary: Entry permitted in accordance with refuge regulations
- Closed Area: All entry prohibited
- No Hunting Zone: Hunting and weapons prohibited

Prohibited Activities

- Fishing
- Littering, dumping garbage, waste or household items.
- Release of wild or domestic animals.
- Baiting or hunting over bait, salt, or any attractant other than hunting scents.
- Spotlighting—artificial light may not be used to locate wildlife.
- Taking of wildlife or plants (including cutting live trees or brush, mushroom picking, and deer shed or feather collecting) other than specified in this brochure.
- Searching for or removing any object of archaeological or historical significance including arrowheads, pottery, or other artifacts
- Marking trails with paint or flagging tape, ribbons, or trail tacks.
- Blocking gates, or roadways with vehicles.
- Camping and fires.
- Tree stands with nails, screw-in steps, or other items that penetrate the outer bark of a tree.
- Use of scouting cameras.
- Target practice.
- All-terrain vehicles.
- Horses or mules.



Optima NWR



Legend

- Optima Parking
- Optima NWR

Sources: Esri, HERE, Garmin, USGS, Intermap, INCREMENT P, NRCan, Esri Japan, METI, Esri China (Hong Kong), Esri Korea, Esri (Thailand), NGCC, (c) OpenStreetMap contributors, and the GIS User Community