

Visitor Area

Colusa NWR has a small Visitor Area with a parking lot, restroom, information kiosk, picnic tables, native plant garden, trailhead, and an Observation Deck with incredible viewing.



Information Kiosk & Restrooms



Observation Deck at the Visitor Area has up-close views of wildlife



Picnic Tables & Native Plant Garden

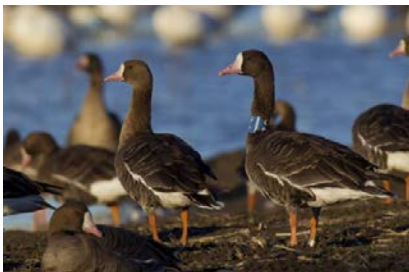
Walking Trail



Take a 1-mile round-trip walk among the trees of Powell Slough, and step out into the marsh on the Observation Boardwalk along the way.

Auto Tour

Stay in your vehicle while you drive the 3-mile Auto Tour. Keep your eye out for the occasional collared goose!



Sacramento National Wildlife Refuge Complex
752 County Road 99W
Willows, CA 95988
Phone: 530 934 2801
www.fws.gov/refuge/colusa

For further information on Refuge hunting, wildlife observation, environmental education, or photography, please use our contact information listed above.

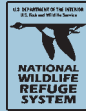
U.S. Fish & Wildlife Service
<http://www.fws.gov>

For Refuge Information
1 800/344-WILD

California Relay Service
TTY 1 800/735-2929
Voice 1 800/735-2922

Visitors with disabilities may be reasonably accommodated upon request, and/or receive an alternative format publication.

February 2017

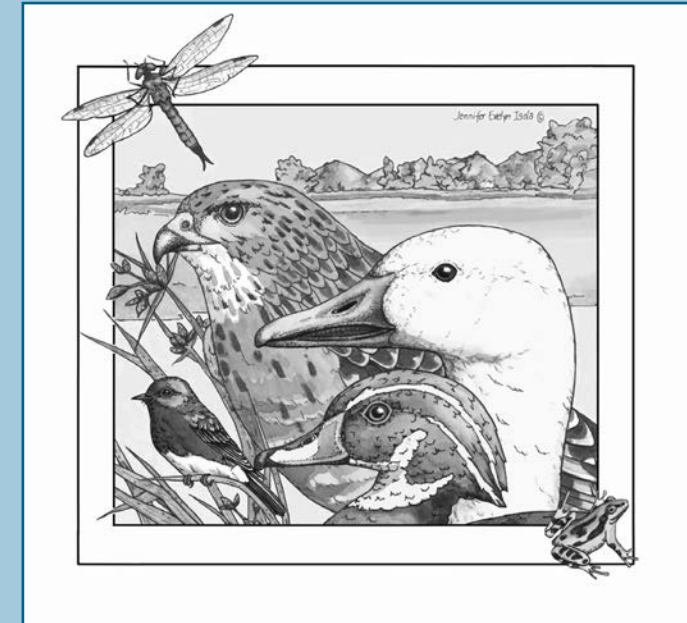


U.S. Fish & Wildlife Service

Colusa

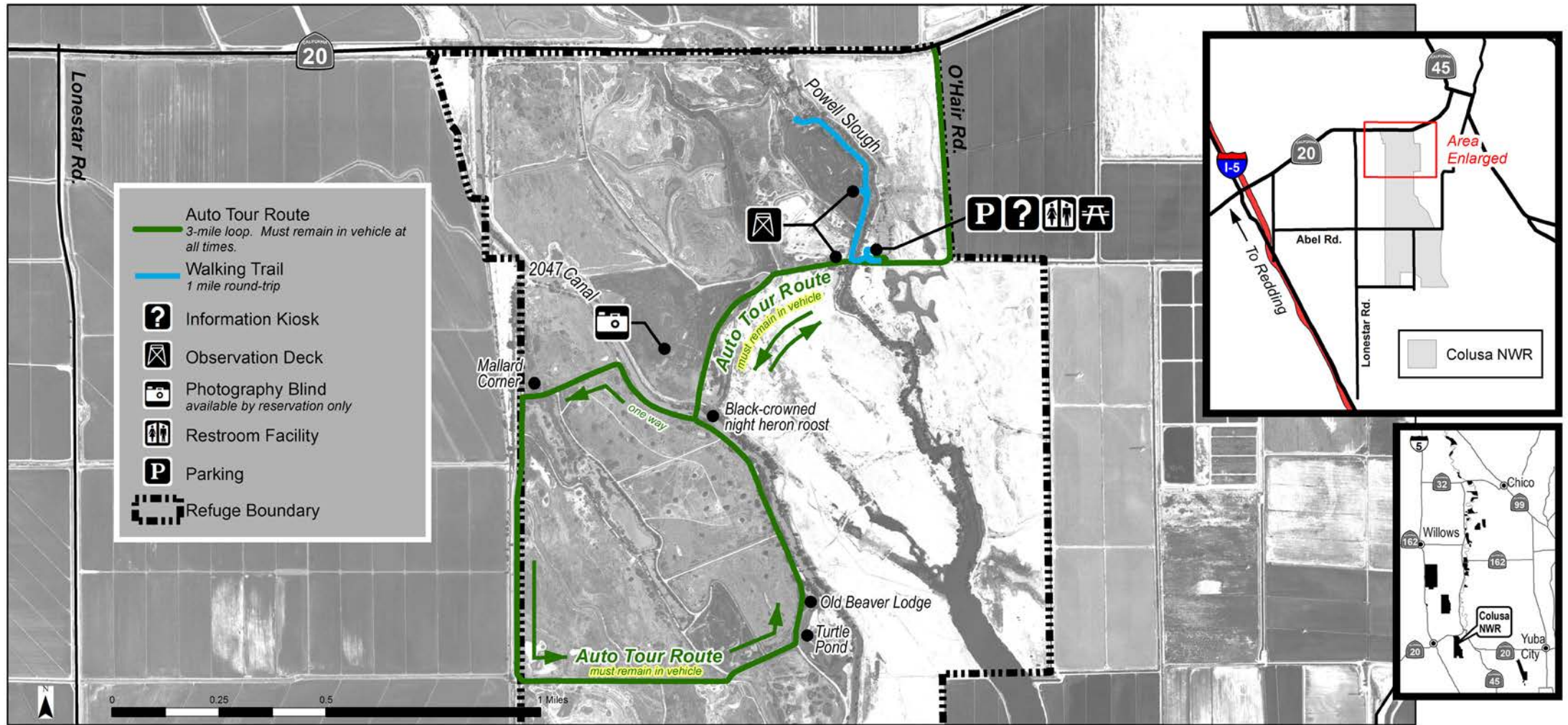
National Wildlife Refuge

Visitor Area, Auto Tour & Walking Trail



Open Year-Round

Colusa National Wildlife Refuge - Visitor Area, Auto Tour & Walking Trail



General Information: Area open year-round. Please respect all signs and area closures.

- Day use only -** Auto Tour and trail open 1 hour before legal sunrise to 1 hour after legal sunset.
- Dogs -** are welcome, but must be kept on leash.
- Hiking -** Foot access on marked trail only. Follow the mowed/dirt trail.
- Bicycles -** Bicycles permitted ONLY on Auto Tour, ONLY from May 15 - Aug 15. Stopping is not permitted along Auto Tour. Bicycling is otherwise prohibited. Carrying a tire repair kit is recommended.
- Photography Blind -** Blind is available by reservation only. Visit our website for details.

- Wildlife Observation -** Visit our website to find out about educational activities and birding tours.
- Hunting -** Hunting is allowed only in designated areas (not pictured on this map) within the designated season. See our website for regulations and details.
- Fishing is prohibited.**
- Camping is prohibited.**
- Take out what you bring in. Littering is unlawful!**

Additional maps are available for our Hunt Area. Please visit our website for details: www.fws.gov/refuge/colusa