

# Cibola

## National Wildlife Refuge Hunting Regulations 2021–2022



Activity	Season	Hunt Areas	Special Regulations
<b>Waterfowl</b> geese, ducks, coots, and gallinule	AZ – Oct 23, 2021 - Jan 31, 2022, Youth Hunt Feb 5-6, 2022 CA – Oct 2, 2021 - Jan 31, 2022, Youth Hunt Feb 5-6, 2022	Unit 2, Hart Mine Marsh, Island Unit, CA Lands	Methods of take include shotgun, bow and arrow, and crossbow. Only shotguns capable of holding no more than three shells may be used for waterfowl. All ammunition must be federally approved non-toxic (non-lead). Unit 2 (Nov 27 - Jan 31). Unit 2 & Island Unit, Youth Waterfowl Camp (Dec 10-12)
<b>Wilson's snipe</b>	AZ – same as waterfowl season October 23 - January 31 CA – same as upland game bird Oct 16, 2021 - Jan 30, 2022	Unit 2, Hart Mine Marsh, Island Unit, CA Lands	Methods of take include shotgun, bow and arrow, and crossbow. Only shotguns capable of holding no more than three shells may be used. All ammunition must be federally approved non-toxic (non-lead).
<b>Dove</b> mourning, white-winged, and Eurasian collared-dove	AZ and CA (early season) September 1 - 15, 2021 AZ (second season) Nov 19, 2021 - Jan 2, 2022 CA (second season) Nov 13, 2021 - Dec 27, 2021	Unit 1 South, Unit 2, Hart Mine Marsh, Island Unit, and CA Lands	Methods of take include shotgun, bow and arrow, and crossbows. Only shotguns capable of holding no more than three shells may be used. All ammunition must be federally approved non-toxic (non-lead). Unit 2 is only open for dove hunting during the early dove season. It is closed during the second season. Eurasian collared dove may only be hunted on the refuge during the state mourning dove season. White-winged dove is early season only in AZ, while Mourning and Eurasian can be hunted during both seasons. In CA, all 3 can be hunted during both seasons.
<b>Gambel's quail</b>	AZ – Oct 15, 2021 - Feb 6, 2022 CA – Oct 16, 2021 - Jan 30, 2022	Unit 1 South, Unit 2, Hart Mine Marsh, Island Unit, and CA Lands	Methods of take include shotgun, handgun shooting shot, bow and arrow. All ammunition must be federally approved non-toxic (non-lead). Quail hunting in Unit 2 is permitted from the season opening until October 31 and again after the last day of the waterfowl season until the close of quail season.
<b>Desert cottontail rabbit</b>	AZ – September 1 to the end of the AZ quail season CA –September 1 to the end of the CA quail season	Unit 1 South, Unit 2, Hart Mine Marsh, Island Unit, and CA Lands	Methods of take include shotgun, rifle (CA only), handgun, muzzleloader, bow and arrow, and crossbow. All ammunition must be federally approved non-toxic (non-lead). Rabbit hunting in Unit 2 is permitted from the season opening until Oct 31, and again after the last day of the waterfowl season until the close of quail season.
<b>Mule Deer</b>	AZ general – Nov 5-14, 2021 AZ archery (Unit 43A and 43B) – Dec 10, 2021 - Jan 31, 2022 CA general (Zone D12) – Nov 6-28, 2021 CA archery (Zone D12) – Oct 2-24, 2021	Unit 1 South, Unit 2, Hart Mine Marsh, Island Unit, and CA Lands	AZ - Methods of take for Unit 1 South, Unit 2, and Hart Mine Marsh are bow and arrow and crossbow only. Methods of take for Island Unit are rifle, shotgun, handgun, muzzleloader, bow and arrow, and crossbow in accordance with state regulations. CA - Methods of take for CA Lands follow state regulations dependent upon the appropriate season.  All ammunition must be federally approved non-toxic (non-lead). Deer hunting is permitted in Unit 2 only after the end of waterfowl season.

**State hunting and fishing regulations and licensing requirements apply to all hunting on the refuge. Consult state regulations for season dates. Shooting hours and methods of take may differ from the State. Signed refuge hunt brochure must be in possession of hunter.**

### Cibola National Wildlife Refuge Hunting Permit 2021—2022

When signed and carried, this serves as your permit for all refuge hunts and acknowledges your understanding of the regulations contained herein. Expires August 31, 2022

\_\_\_\_\_  
Signature (permits are not transferable)

## Welcome

Cibola National Wildlife Refuge was established in 1964 as mitigation for channelization and dam construction on the Colorado River in the 1930s and 1940s. The refuge is located in both Arizona and California along the floodplain of the Lower Colorado River and provides important habitat for migratory birds, wintering waterfowl, and resident species. The refuge contains several miles of historic river channels and backwaters that provide key habitats in a changed environment.

## Firearms

Persons possessing, transporting, or carrying firearms on National Wildlife Refuge System lands must comply with all provisions of state and local law. Persons may only use (discharge) firearms in accordance with refuge regulations (50 CFR 27.42 and specific refuge regulations in 50 CFR Part 32).

## Vehicles

All vehicles must be licensed, registered, and insured for highway use to be operated on refuge roads. All operators must be licensed. Motor vehicle traffic is limited to designated roads and parking areas (see map). Vehicles are not permitted off designated roads. The refuge-wide speed limit is 25 mph.

## Boats

Boat launches are available at different locations on the refuge. Cibola Lake, Three Fingers Lake, and Hart Mine Marsh are no wake and only electric trolling motors or manually powered vessels may be used. With the exception of the main channel of the Colorado River, all waters on the refuge are no-wake zones.

## Accessibility

Hunters with a permanent disability or mobility impairment may contact the Refuge Manager to request reasonable accommodation for general refuge hunting. In the Unit 2 Goose hunt, two blinds are available for hunters with an Arizona CHAMP permit.

If no CHAMP permit hunters are present, the blinds will be made available to other hunters.

## Hunting and Fishing Regulations

Hunting and fishing regulations are designed to provide safe recreational opportunities through wise use of renewable wildlife resources. Hunting and fishing are permitted in accordance with Federal regulations governing public use on National Wildlife Refuges as set forth in Title 50 of the Code of Federal Regulations.

Hunting and fishing will be in accordance with applicable states of Arizona and California regulations subject to the conditions stated below.

## Access

Hunter access is permitted 4:30 a.m. MST to one hour after sunset daily, with the following exceptions;

- Hart Mine Marsh - Entry for everyone is permitted between 10:00 a.m. to 3:00 p.m. MST, October 1 through March 14;
- Unit 2 - access is permitted 4:30 a.m. MST to one hour after sunset only on Tuesday, Wednesday, Saturday, Sunday from the third Saturday of November until the end of goose season and only for hunters drawn for a blind on that day.
- Island Unit - During the Arizona 10-day general deer hunting season, hunter access is permitted 4:30 a.m. MST to one hour after sunset but roads on the Island Unit are open only to foot traffic and non-motorized vehicles (i.e., game carts).

Park in designated parking areas, as identified on the map below.

## Hunt Brochure

All hunters regardless of age are required to have a signed 2021-2022 refuge hunt brochure in their possession. Hunters must possess a valid hunting license and any required stamps from the state in which they are hunting.

## Harvest Reporting

In addition to meeting statewide harvest reporting, hunters must complete a migratory bird Harvest Information Program (HIP) form and return it to the refuge by February 15, regardless of whether you were successful.

## Guided Hunts

All persons for hire assisting or guiding a hunter or fisherman must obtain, possess, and carry a valid commercial special use permit issued by the refuge manager.

## Ammunition

Federally approved, non-toxic (non-lead) ammunition is required for all refuge hunting in both Arizona and California, with the exception of the 10 day general deer hunt in Arizona.

## Game Retrieval

Only upon specific consent from an authorized refuge employee may you retrieve game from an area closed to hunting or public entry.

**Cibola National Wildlife Refuge**  
66600 Cibola Lake Road  
Cibola, AZ 85328

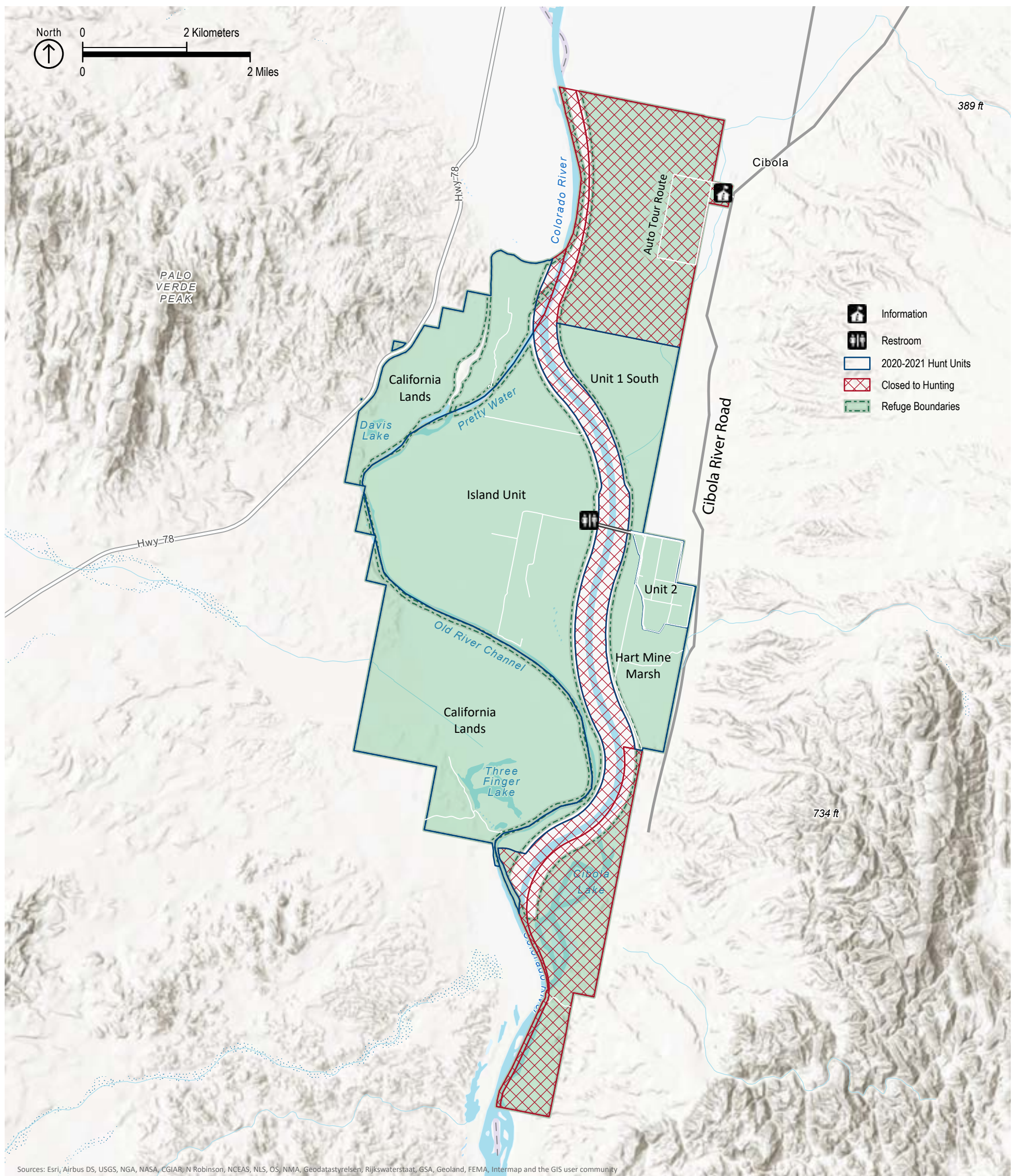
928-857-3253

[www.fws.gov/refuge/cibola/](http://www.fws.gov/refuge/cibola/)

**U.S. Fish & Wildlife Service**  
1-800-344-WILD

**August 2021**





### Unit 2 Goose Hunt

Only Unit 2's managed waterfowl hunt requires a reservation. To participate in the lottery, hunters must submit an application to the refuge office by mail, postmarked November 1. Applications will be accepted starting September 1. The application form, 3-2355 (Waterfowl Lottery Application) can be downloaded at: <https://fws.gov/forms/3-2355.pdf>.

There is no application fee, but ensure application information is correct and legible. Mail applications to:

Cibola NWR  
Attn: Hunt Drawing  
66600 Cibola Lake Road  
Cibola, AZ 85328

### Prohibited Activities

- Disturbing, destroying, or removing any plants is prohibited.
- The use or possession (within physical proximity) of alcohol while hunting is prohibited.

- Disturbing or interfering with any person engaged in an authorized activity on the refuge is prohibited.
- Camping and fires are not permitted.
- Dogs must be confined or leashed unless actively participating in legal hunting activities.
- Pit or permanent blinds are not permitted (except those provided by the refuge).
- All personal items must be removed from the refuge at the end of each day's activity, i.e. boats, equipment, temporary blinds, etc.
- Use of electronic or photographic trail monitoring devices (i.e., trail cameras) is prohibited.
- Marking or flagging any tree or other refuge feature with reflectors, paint, or other substances is prohibited.
- Hunting is prohibited within 200 yards of any public use facility.
- Pack it in, pack it out. Littering is prohibited.

