

Open to Hunting

Deer. Red fox and coyote may be taken incidentally while deer hunting

Closed to Hunting

All other species of wildlife not listed above are protected. Protected species include, but are not limited to, snakes, crow, beaver, otter, and muskrat.

Access

Open Areas -see map

Regular Area (RA), Fischer Tract (FT), and Steamboat Landing (SL) are the "Regular" deer areas. Regular Deer areas are open on a "first come" basis. Check in and out at the sign in boards located in the main parking area for each area.

Headquarters Deer permits will be issued for specific dates and areas. There are no other hunts in the Headquarters area.

We require hunters to notify a refuge representative and receive permission from the refuge manager or designee prior to entering a closed area or safety zone to retrieve game.

Days & Times

The refuge is open for hunting access from 2 hours before legal hunting time to 1 hour after legal hunting time on **designated days** (see table). Hunters are prohibited from being on the refuge (including parking lots) between 9:00 pm & 4:00 am.

South Upland Area

The South Upland Area is open during all state seasons except the Late Handgun season. Access is managed by the Little Creek Hunt Check Station in cooperation with the State. A daily lottery is held 1 ½ hours before legal shooting time and at 12 noon at the Little Creek Check Station. Hunters are advised to arrive 15 minutes prior to the lottery. No refuge fees are charged to hunt in this area, but State fees may apply.

Youth hunt

Any youth from 10 years through 15 years old may participate in the designated Youth Hunt. Youth hunters must be accompanied and assisted by an adult 21 years of age or older. Adult assistants must possess a valid Delaware hunting license or LEN. Adult assistants shall not possess a firearm or other hunting device during the hunt. Hunters 13 -15 years of age must have completed a hunter education course and possess a certification card and must also purchase a Delaware junior hunting license. Adult assistants must remain within 5 feet, maintaining close visual and verbal contact, providing adequate direction to, and can immediately assume control of the firearm from the youth hunter.

Activity	Season	Open Areas	Special Regulations
Archery Deer	September 1 - January 31	RA, FT, SL	State regulations apply. All State approved archery equipment is allowed.
Muzzleloader Deer	October 11,12,14,15,18,19	RA, FT, SL	State regulations apply. All access to Regular area units is via Dutch Neck Rd. No Sunday Hunting. No centerfire rifles
	January 30,31 February 1	FT, SL	
Shotgun Deer	November 15, 16, 18,19, 22, 23 January 18, 20, 24, 25	RA, FT, SL	
Antlerless Deer	December 14, 16, 17, 20, 21	FT, SL	
Disabled/ Youth Deer	September 28 November 2	FT, SL	
Headquarters Deer	October 11 -Muzzleloader November 15 -Shotgun December 18 -Antlerless	H1, H2, H3, H4, H5, H6	State regulations apply.
State hunting regulations and licensing requirements apply to all hunting on the refuge. Shooting hours and methods of take may differ from the state. Signed refuge hunt brochure must be in possession of hunter. Upon request, hunters and their assistants must display for inspection all licenses, permits, game, equipment, weapons, and ammunition, to Federal and State law enforcement officers.			

Headquarters Deer Hunts October 11th, November 15th & December 18th

There will be a preseason lottery to issue permits. To participate, complete an application (available online (www.fws.gov/refuge/bombay-hook/visit-us/activities/hunting) or at the refuge office) and mail it in to or drop it off at the refuge office. You must be at least 16 years old to obtain a Bombay Hook Headquarters Deer Permit. Permits will be issued in 6 zones in the Headquarters Deer Hunt Area. Standby hunters may sign up for no show spots or signed out spots after 9am. Youth under the age of 16 may hunt with a permitted adult (21 years or older) from the same stand/blind during the Headquarters hunts. If selected you will be mailed a postcard permit for the hunt. Bring this card with you on the hunt day.

**Bombay Hook
National Wildlife Refuge
2591 Whitehall Neck Rd
Smyrna, DE 19977
302-653-9345**

**U.S. Fish & Wildlife Service
1-800-344-WILD
July 2024**



Prohibited Activities

- By law, recreational activities on national wildlife refuges are prohibited unless expressly permitted. Please check with the office if you have questions.
- Entering hunt areas without possessing authorized hunt permits.
- Hunting and scouting outside designated days.
- Use and/or possession of alcoholic beverages or other intoxicating substances while hunting.
- Permanent tree stands, nails, screw-in steps, or other items that penetrate the outer bark of a tree.
- Building or maintaining any structure on the refuge.
- Leaving any property unattended.
- Cutting and damaging vegetation/trees or the use of cut vegetation/trees or organic material as camouflage for any purpose.
- Access to the Refuge from private or state property
- Distribution of bait or hunting with the aid of bait, including any grain, salt, minerals and other substances that are consumed.
- Hunting within 150 yards of any public use facility or hunting in designated safety zones as shown on hunting maps.
- Littering.
- Leaving deer entrails or other waste within 50 feet of any trail, road, or refuge structure.
- Driving or pushing deer.
- Dogs may not be used to hunt or pursue deer.
- Shooting from, across or down any designated refuge road.
- Target shooting or shooting for any purpose other than legal in season hunting.
- Parking in front of or blocking gates.
- Camping and Fires
- Searching for or removal of any natural items such as antlers, skulls, plants, historic, and archaeological features.
- Use of electronic or photographic trail monitoring devices.
- Use of drones.

Harvest Reporting

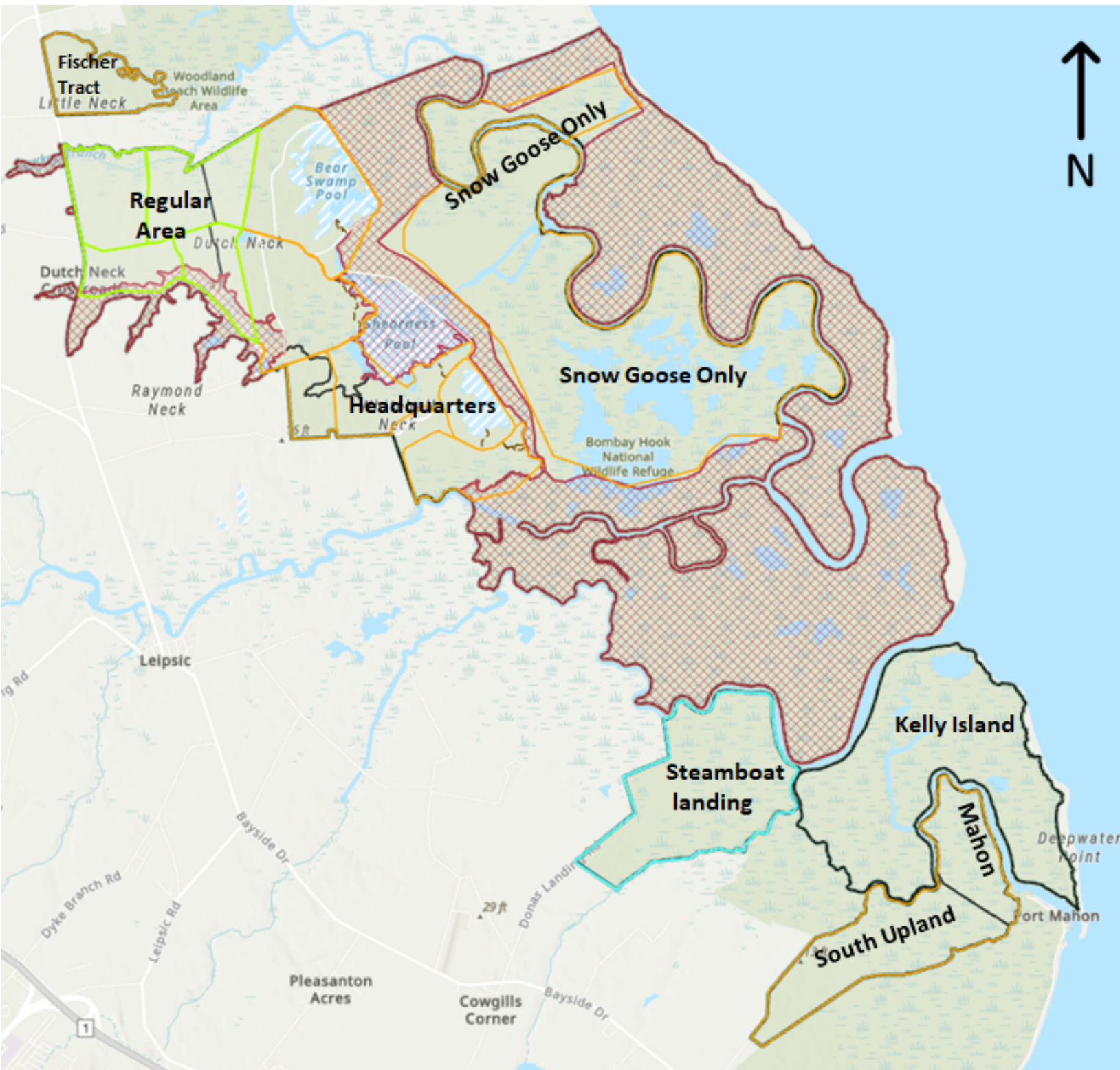
In addition to meeting statewide harvest reporting permitted hunters must complete a Big Game Harvest Report (FWS form 3-2359, available at the refuge headquarters) and return it to the visitor center (in person or by mail 2591 Whitehall Neck Rd, Smyrna, DE 19977), regardless of whether you were successful.



Bombay Hook National Wildlife Refuge

Hunt Unit Map

See supplementary maps for more detailed information.



THIS MAP IS FOR REFERENCE PURPOSES ONLY. THE BOUNDARY LINES SHOWN ARE APPROXIMATE. FOR BOUNDARY LINE INFORMATION, PLEASE CONTACT THE REFUGE OFFICE. PLEASE OBSERVE AND ADHERE TO ALL POSTED AREAS REFER TO REFUGE HUNTING REGULATIONS FOR AVAILABLE HUNTING OPPORTUNITIES INCLUDING HUNT DATES AND HUNT AREAS