



## A Winter Wonderland

National Park Inn, a National Historic Landmark, provides a rustic retreat in the historic Longmire district. You will find everything necessary for an unforgettable winter wonderland getaway, cozy accommodations, unmatched hiking, snowshoeing and cross-country skiing. Visit and relish the beauty of one of America's National Park treasures.

### A Great Escape

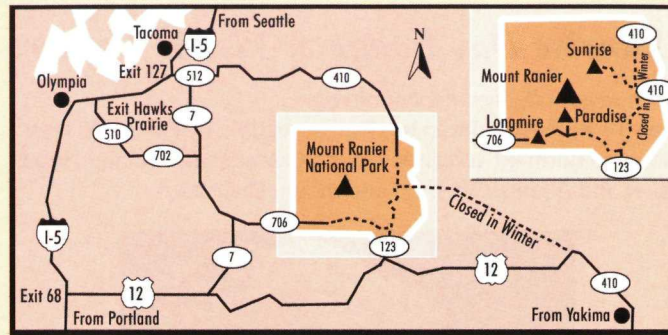
When you're ready for some fun in the snow, we have everything you'll need! We rent cross-country ski equipment and snowshoes by the day, or arrange for lessons and guided tours. Explore breathtaking alpine meadows, or glide down miles of secluded nature trails. Cross-country skiers, beginners and experts alike, can choose the perfect terrain. All this in the shadow of one of the world's most beautiful and majestic mountains. After a fun-filled day of activity, enjoy browsing through our gift shops at National Park Inn and Jackson Memorial Visitor Center.



Reservations: (360) 569-2275  
General Information: (360) 569-2400  
[www.guestservices.com/rainier](http://www.guestservices.com/rainier)

### Ground Transportation

Grayline: (800) 426-7532  
Mt. Rainier Scenic Tours: (888) 293-1404



**Directions from Seattle-Tacoma International Airport:**  
I-5 South to Hwy 7, Hwy 7 South to Elbe, Hwy 706 East to Nisqually Entrance (SW Entrance), Mount Rainier National Park

**Highway 410 is closed during the winter.**  
Gas and chain rentals are not available in the park.

**Weather and road conditions: (360) 569-2211**



Guest Services, Inc.  
P.O. Box 108,  
Ashford, WA 98304



Image by Jamie & Judy Wild

*Paradise is not just a myth...  
it's a destination!*



# MOUNT RAINIER NATIONAL PARK



## Paradise Inn

*Open May 20 - October 10, 2005*

<b>Room</b> (1 - 2 persons daily)	<b>\$92.00</b>
<b>Room with Bath</b> (1 - 2 persons daily)	<b>\$137.00</b>
<b>Two Room Unit with Bath</b> (1 - 3 persons daily)	<b>\$194.00</b>
<b>Suite with Sitting Room</b> (1 - 3 persons daily)	<b>\$211.00</b>
<b>Crib / each additional person</b>	<b>\$15.00</b>



## National Park Inn

*Open Year Round*

<b>Room</b> (1 - 2 persons daily)	<b>\$98.00</b>
<b>Room with Bath</b> (1 - 2 persons daily)	<b>\$132.00</b>
<b>Two Room Unit with Bath</b> (1 - 3 persons daily)	<b>\$181.00</b>
<b>Crib / each additional person</b>	<b>\$15.00</b>

Rates subject to change, plus State Sales Tax.

**Handling Fee:** \$15.00 fee for reservation changes or cancellations.

**Cancellation policy:** Minimum of seven days notice is required, subject to \$15.00 handling fee. Less than seven days notice results in charge for one night's room rate plus tax.

**Reservations:** (360) 569-2275





## Paradise Inn

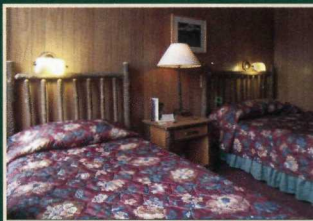
*Open seasonally*

Built in 1917, our historic guest lodge features 118 rooms, the Paradise Inn Dining Room, Glacier Lounge, and gift shop offering Native American crafts.

Elevation: 5,400 feet



Included in the prestigious Historic Hotels of America register, two National Historic Landmark Inns provide a rustic retreat with antique Northwest decor. Paradise Inn was built using charred Alaskan Cedar from the nearby Silver Forest. Hand-hewn furniture, piano, and grandfather clock still grace the lobby.



## Sunrise Day Lodge & Visitor Center

*Open seasonally, weather permitting*

Visit the highest point in the Park accessible by car (6,400 feet). View the dormant volcanoes of the Cascades, Mt. Rainier, Hood, Baker and Adams. Gift shop and dining available.



## Henry M. Jackson Memorial Visitor Center

*Open year round*

This center is located at Paradise. Enjoy browsing through our gift shop or view one of the exhibits on geology, glaciers, flora, fauna, and mountain climbing. A fast food restaurant is available serving hot dogs, burgers, drinks, etc.



Park information and historical displays can be seen at the Longmire Museum and the visitor centers at Ohanapeosh, Sunrise, and Paradise.



Reservations: (360) 569-2275  
General Information: (360) 569-2400  
[www.guestservices.com/rainier](http://www.guestservices.com/rainier)

Outdoor Activities:  
RMI Climbing School: (360) 569-2227



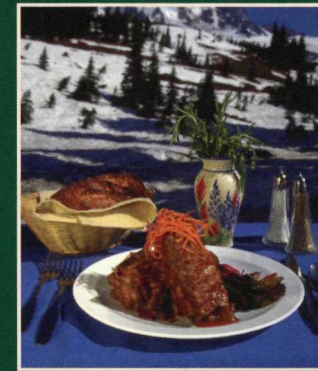
## National Park Inn



*Open year round*

The Inn offers 25 guest rooms, a full service restaurant and general store. Its cozy lounge for overnight guests features an oversized stone fireplace. National Park Inn was moved to its present location in 1920 and was rebuilt after a fire destroyed much of the original building in 1926.

Elevation: 2,700 feet



Mt. Rainier National Park by Guest Services offers the perfect dining options, from convenient snack bars to casual dining with classic American and Northwestern cuisine in spectacular settings. Breakfast, lunch, and dinner are offered at both National Park Inn and Paradise Inn. Quick meals are also available at the visitor centers.

