



The Great Northern Landscape Conservation Cooperative

Conservation partners working toward a collective landscape vision and conservation goals for building ecosystem resilience



The GNLCC is partnership directed and coordinated by the U.S. Fish and Wildlife Service and National Park Service. Partners include federal, state, tribal, and nongovernmental organizations working on landscape conservation.

The Great Northern area, which encompasses diverse habitats in parts of Alberta, British Columbia, Idaho, Montana, Oregon, Washington, and Wyoming, is categorized into three broadly defined ecotypes: Columbia Basin, Rocky Mountain, and Sage-Steppe.

Partners of the GNLCC support land and water conservation through these agreed upon values:

- Ecosystems and habitats with native vegetation that supports populations of important fish and wildlife species
- Species important for ecological values as well as socially important hunting and angling values
- Rivers, lakes, riparian, and wetland systems valued for ecological services as well as for water delivery and water quality for human use
- Lands rich in cultural heritage to Native American Tribes
- Traditional land-uses such as ranching, agriculture and timber production
- Lands supporting a history of western culture



GOAL

To coordinate, facilitate, promote, and add value to large landscape conservation to build resource resilience in the face of climate change and other landscape-level stressors through the following:

SUPPORT SCIENCE DEVELOPMENT Identify and facilitate the development, integration, and application of social and natural scientific information needed to inform water, land, fish, wildlife, and cultural heritage management decisions.

EFFECT COORDINATION Support coordination and integration of conservation science and actions across ecosystems at the landscape scale, leveraging the capabilities of respective agencies/organizations/partnerships, and provide real-time situational awareness of on-going conservation efforts

INFORM CONSERVATION ACTION Promote conservation actions at the unit and ecosystem level by providing scientific information and decision support tools and by informing conservation actions that support resource resilience.

MONITOR AND EVALUATE Monitor landscape scale indicators, test scientific assumptions, and evaluate effectiveness of conservation actions to inform adaptive management decision making.

COMMUNICATE AND EDUCATE Communicate relevant science information and GNLC activities and opportunities to partners and users. Advocate for collaborative conservation and seek to leverage capabilities and support.

ORGANIZATION STRUCTURE



USFWS propose LCCs in Climate Change Strategy

LCCs established by DOI Secretarial Order No. 3289

GNLCC Interim Operational Plan to DOI

USFWS & NPS agree to co-lead GNLCC

1st Steering Comm. Meeting, Bozeman, MT

FY10 Science Proposals Approved

1st Ad Team Meeting, W. Yellowstone

July 2009

Sept 2009

Dec 2009

March 2010

April 2010

May 2010

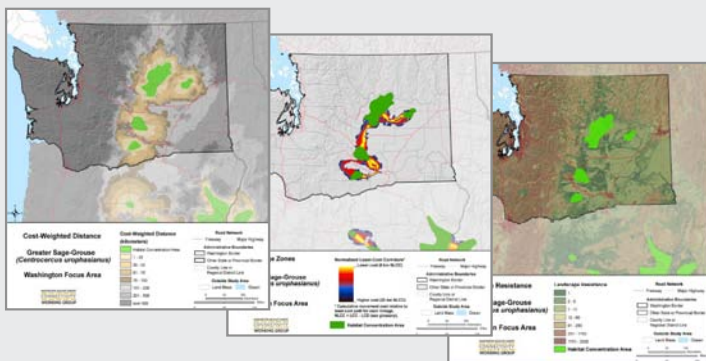
June 2010

GUIDING PRINCIPLES

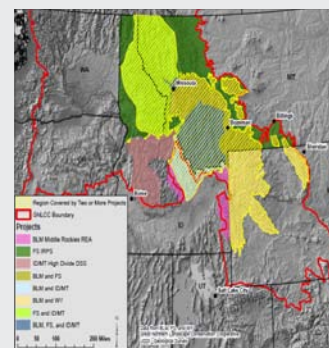
- Work cooperatively and collaboratively to improve effectiveness of each organizations' large scale landscape conservation programs and efforts
- Conduct open and frequent communications within the GNLCC network, between related climate change and landscape programs, and among the expanded climate change and landscape conservation community
- Consider and respect each participating organizations' unique mandates and jurisdictions
- Coordinate with other committees, workgroups or organizations that add mutual value, maximize capacity, avoid redundancies, and leverage resources
- Focus on solving scientific, ecological and biological issues to promote scientifically-sound, outcome-based adaptive management
- Respect social, political and legal limitations while promoting solutions to landscape-level stressors (climate and others) that benefit the greater GNLCC conservation community
- Be transparent in operations and ensure equal and open access

EXAMPLES OF COLLABORATION

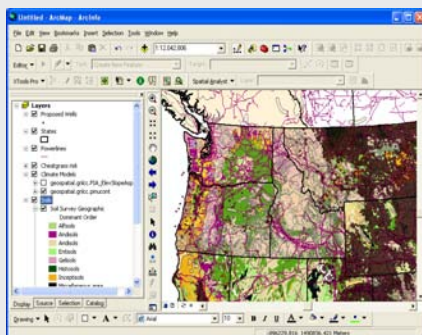
Washington Connected Landscapes Project



Demonstration Project



GeoPortal



Predicting Effects of Climate Change on Aquatic Ecosystems

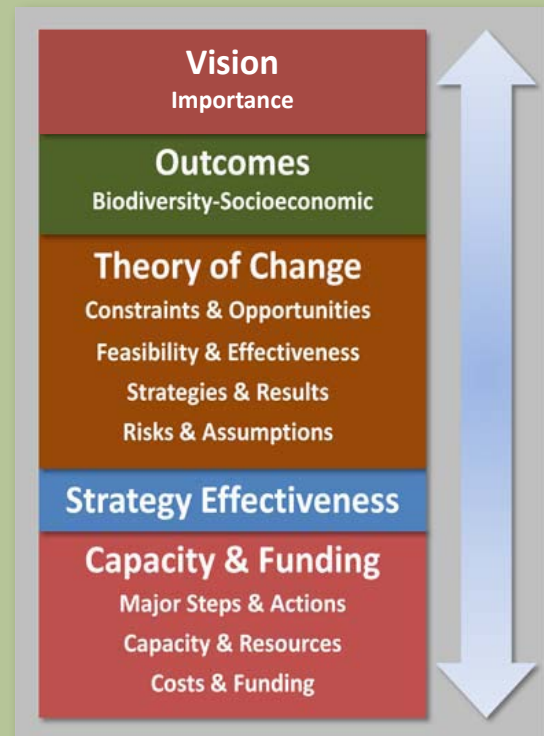


Advisory Retreat, Bozeman, MT (July 2010) |
 SWAP Workshop, Bozeman, MT (Aug 2010) |
 2nd Advisory Team Retreat, Salmon, ID (Sept 2010) |
 2nd Steering Comm. Meeting, Boise, ID (Oct 2010) |
 Demonstration Project launched (Nov 2010) |
 GNLCC Governance Charter approved (Dec 2010) |
 FY11 Funding Guidance issued (Feb 2011) |
 3rd Advisory Team Retreat, Cheney, WA (March 2011) |
 3rd Steering Comm. Meeting, Pendleton, OR (April 2011)

NEXT STEPS: DEVELOP A STRATEGIC CONSERVATION FRAMEWORK

Draft Key Elements

- Collective vision of shared values and goals
- Nested conservation objectives—landscape processes to species
- Achievable conservation targets
- Cross-jurisdictional landscape issues with specific outcomes
- Adaptive management component
- Insights and structure for communicating results
- Realistic to implement without undue burden



Great Northern LCC Contacts

Yvette Converse, Co-coordinator (USFWS)
406.994.7486
Yvette_Converse@fws.gov

Tom Olliff, Co-coordinator (NPS)
406.994.7920
Tom_Olliff@nps.gov

Sean Finn, Science Co-coordinator (USFWS)
208.426.2697
Sean_Finn@fws.gov

Rick Sojda, Science Co-coordinator (USGS)
406.994.6556
sojda@usgs.gov

GNLCC website: <http://nrmsc.usgs.gov/gnlcc>

Photo credits:

Front: Riparian wetlands, M McFadzen
Inside: Forest landscape, M McFadzen;
Bull trout, J Sartore
Back: Working landscape, BLM; Sage
grouse, Rocky Mountain Front, and
Grizzly bears, USFWS

April 2011